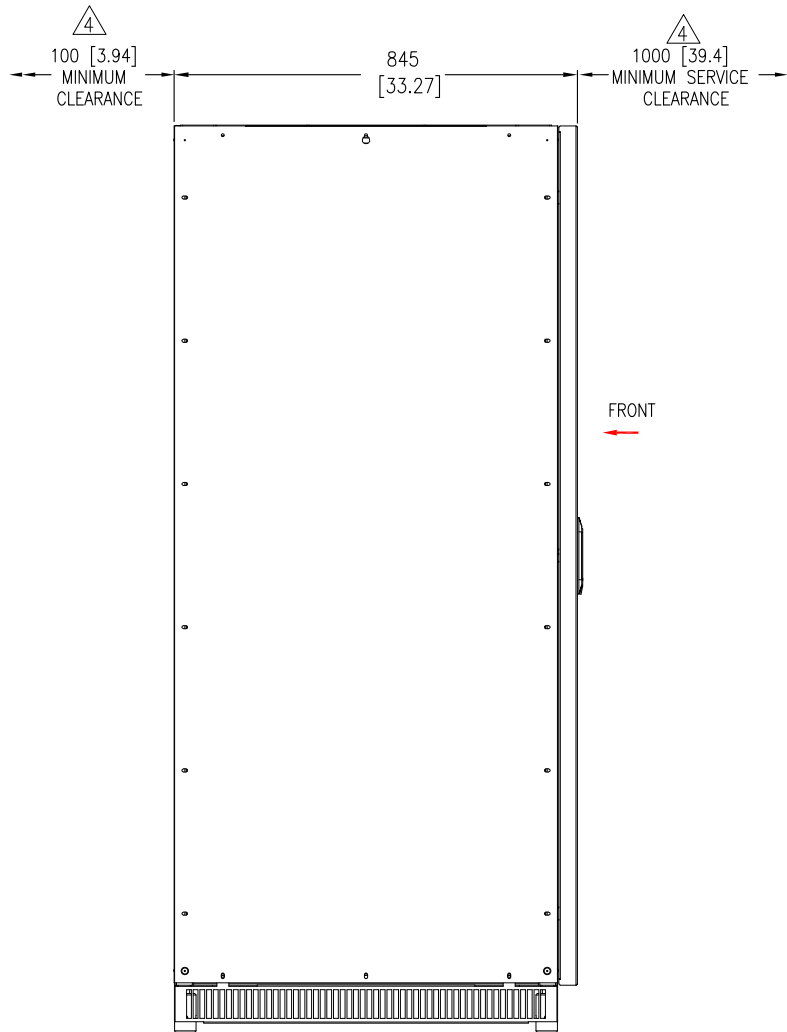
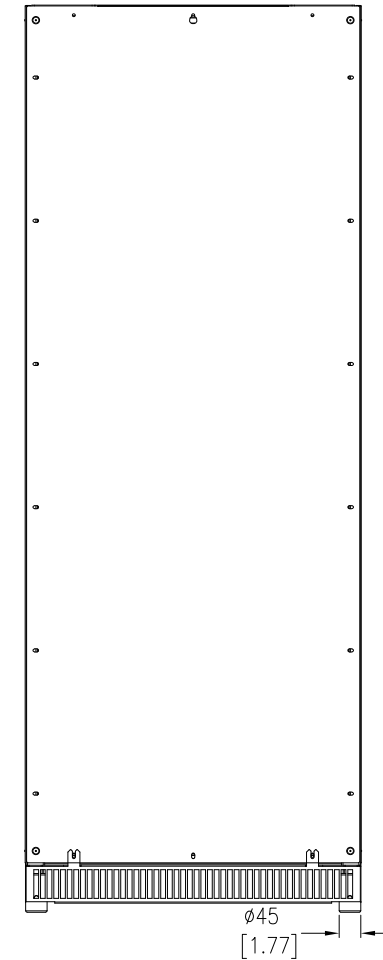


FRONT VIEW



LEFT SIDE VIEW



REAR VIEW

#### NOTES:

1. INSTALLATION SHALL COMPLY WITH ALL APPLICABLE NATIONAL, STATE AND LOCAL ELECTRICAL REGULATIONS.
2. REFER TO PRODUCT DOCUMENTATION FOR ADDITIONAL DETAILS PRIOR TO INSTALLATION AND SITE PREPARATION WORK.
3. ALL DIMENSIONS ARE IN MILLIMETERS [INCHES].
- △ 4. CLEARANCE DIMENSIONS ARE MEANT FOR AIR FLOW AND SERVICES ACCESS ONLY. CONSULT WITH THE LOCAL SAFETY CODES AND STANDARDS FOR ADDITIONAL REQUIREMENTS IN YOUR AREA.  
THE ROOM SHOULD BE VENTILATED TO PREVENT THE CONCENTRATION OF THE DIHYDROGEN GENERATED BY THE BATTERY CABINET.  
RECOMMENDED MINIMUM AIRFLOW IS 2.41m<sup>3</sup>/h.
- △ 5. DIMENSION EXCLUDES SKIN AND SCREW PROJECTIONS.
6. THE WEIGHT OF THE UNIT IS 780 kg [1720 lbs].
7. OPERATING TEMPERATURE: 0°C TO 40°C [32°F TO 104°F]
8. COLOR: RAL 9003 WHITE, GLOSS LEVEL 85%.
9. PROTECTION CLASS - IP20
10. DOOR SWING: FREELY ROTATES BY 130°.
11. CABLE ENTRY IS FROM BOTTOM OF THE UNIT.

THIS DRAWING AND SPECIFICATIONS HEREIN ARE THE PROPERTY OF SCHNEIDER ELECTRIC AND SHALL NOT BE COPIED, REPRODUCED OR USED IN WHOLE OR IN PART, AS THE BASIS FOR THE MANUFACTURE OR SALE OF ITEMS WITHOUT WRITTEN PERMISSION FROM SCHNEIDER ELECTRIC. THIS DRAWING IS BASED UPON LATEST AVAILABLE INFORMATION AND IS SUBJECT TO CHANGE WITHOUT NOTICE.

**Schneider**  
**Electric**

TITLE: E3M UPS  
CLASSIC BATTERY CABINET-700mm IEC  
WITH 38Nos. XP12-150 BATTERIES, CONFIG-C  
GENERAL ARRANGEMENT

DWG NO: E3MCBC7D

REV. 0

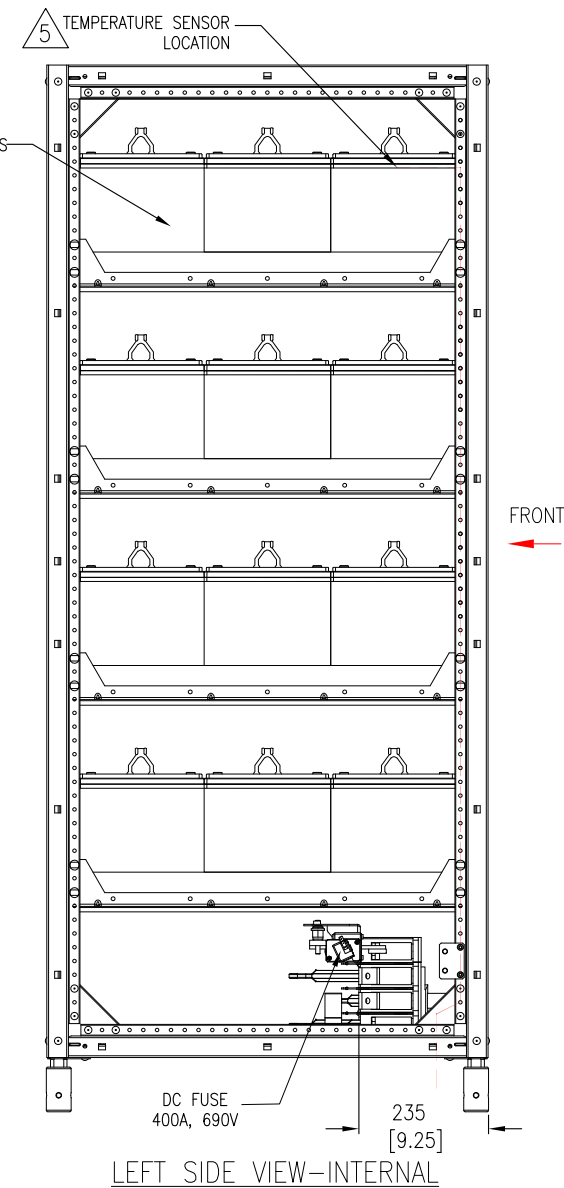
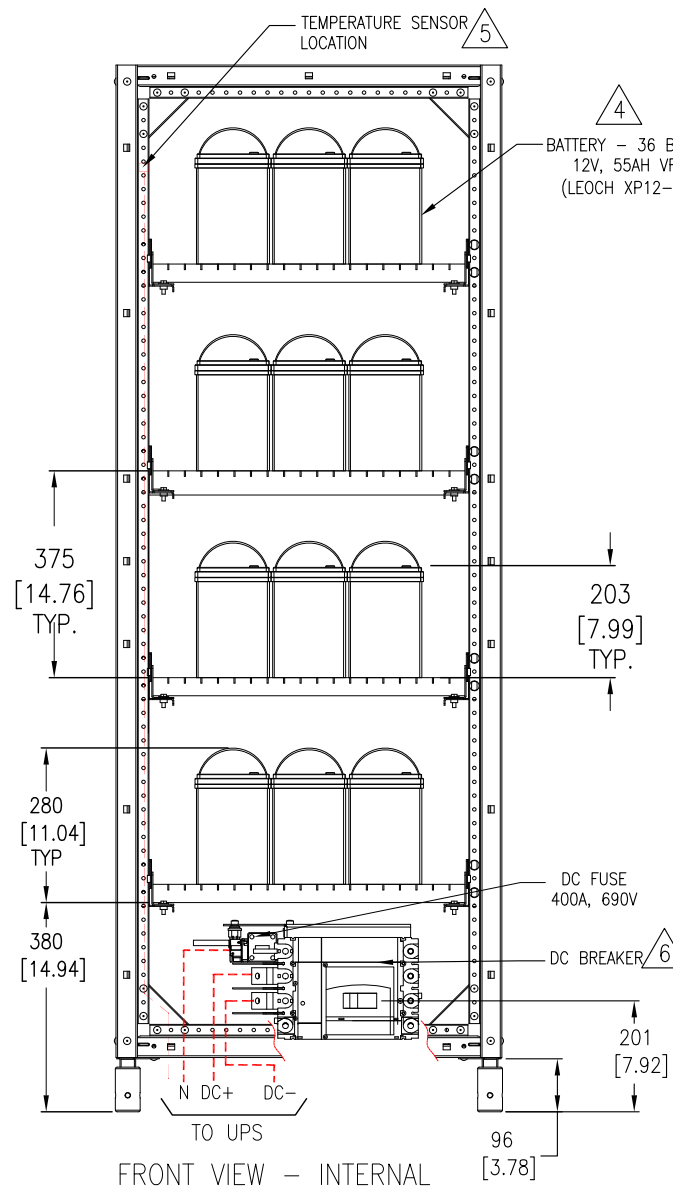
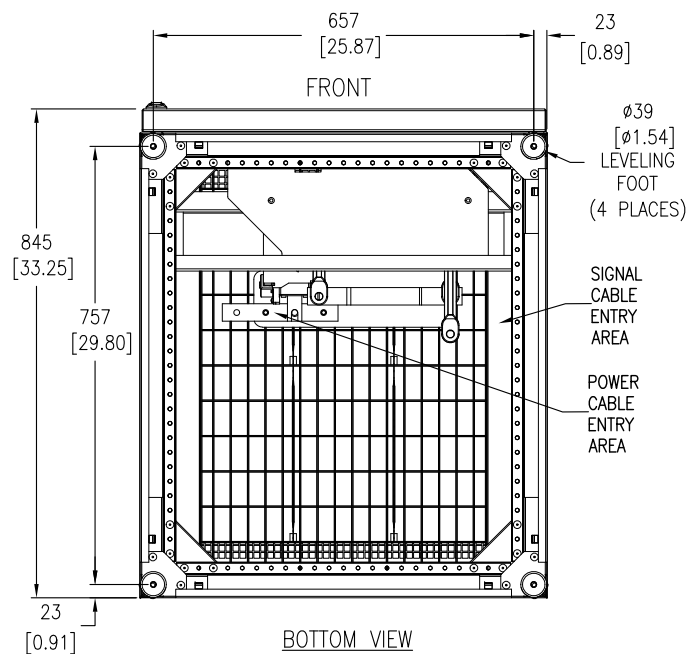
DRAWN: BALA 16-JUN-21

ENGINEER: S B 29-JUN-21

APPROVED: S B 29-JUN-21

PROJECT: SUBMITTALS DRAWINGS SHEET 1 OF 3

FIRST  
ANGLE  
PROJECTION



#### NOTES:

- 1.INSTALLATION SHALL COMPLY WITH ALL APPLICABLE NATIONAL AND LOCAL ELECTRICAL REGULATIONS.
- 2.PLEASE REFER TO PRODUCT MANUALS FOR ADDITIONAL DETAILS PRIOR TO INSTALLATION AND SITE PREPARATION WORK.
- 3.ALL DIMENSIONS ARE IN MILLIMETERS UNLESS OTHERWISE SPECIFIED.
- 4.SOME STRUCTURAL DETAILS HAVE BEEN OMITTED FOR THE PURPOSE OF CLARITY.
- 5.BATTERIES SHOWN ARE TYPICAL.
- △ 6.FOR BREAKER TRIP SETTING DETAILS REFER TO SHEET-3.

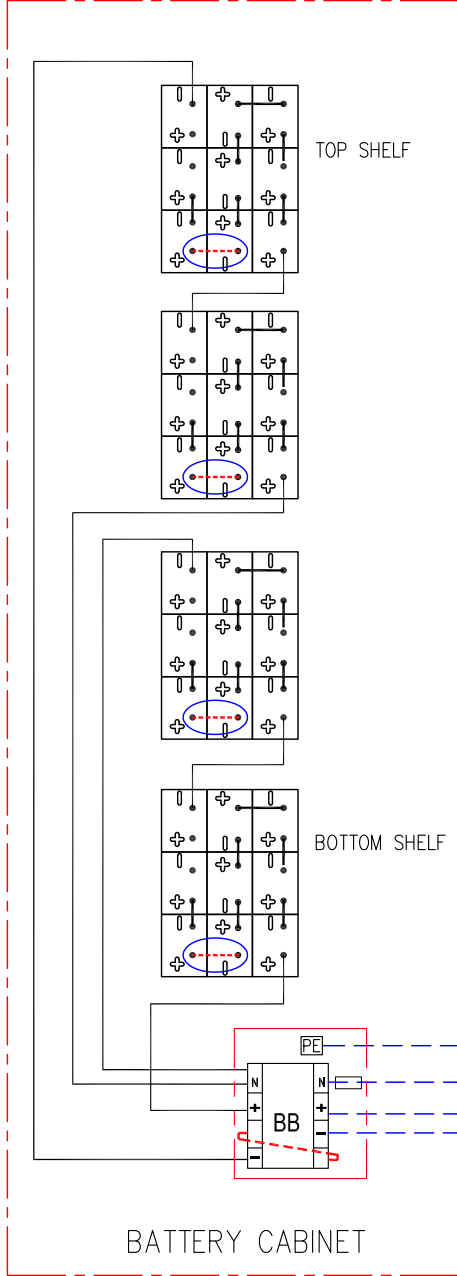
THIS DRAWING AND SPECIFICATIONS HEREIN ARE THE PROPERTY OF SCHNEIDER ELECTRIC AND SHALL NOT BE COPIED, REPRODUCED OR USED IN WHOLE OR IN PART, AS THE BASIS FOR THE MANUFACTURE OR SALE OF ITEMS WITHOUT WRITTEN PERMISSION FROM SCHNEIDER ELECTRIC. THIS DRAWING IS BASED UPON LATEST AVAILABLE INFORMATION AND IS SUBJECT TO CHANGE WITHOUT NOTICE.

**Schneider Electric**

TITLE: E3M UPS  
CLASSIC BATTERY CABINET-700mm IEC  
WITH 38Nos. XP12-150 BATTERIES, CONFIG-C  
INTERNAL VIEWS

PROJECT: SUBMITTALS DRAWINGS SHEET 2 OF 3

DWG NO:	E3MCBC7D	REV:	0
DRAWN:	BALA	16-JUN-21	FIRST ANGLE
ENGINEER:	S B	29-JUN-21	PROJECTION
APPROVED:	S B	29-JUN-21	



BATTERY RUNTIME DETAILS FOR EASY 3M 400V UPS													
		RUNTIME IN MINUTES											
UPS RATING (kW)	SKU NUMBER	1 x E3MCBC7D				2 x E3MCBC7D				3 x E3MCBC7D			
		@25%LOAD	@50%LOAD	@75%LOAD	@100%LOAD	@25%LOAD	@50%LOAD	@75%LOAD	@100%LOAD	@25%LOAD	@50%LOAD	@75%LOAD	@100%LOAD
60	E3MUPS60KHS	64	28	16.5	11	140	64	39	27	N A			
80	E3MUPS80KHS	45.5	19.5	11	7	100	46	27	18.5				
100	E3MUPS100KHS	34	14	8	N A	79	35	20.5	13.5				
120	E3MUPS120KHS	27.5	11	6	N A	64	28	16	11				
160	E3MUPS160KHS	19	7.5	N A	N A	45.5	19.5	11	7.4				
200	E3LUPS200KHS	14	N A	N A	N A	34.5	14	8	N A				
250	E3LUPS250KHS	N A	N A	N A	N A	26	10	5.4	N A	43	18	10	6.5
300	E3LUPS300KHS	N A	N A	N A	N A	20.5	8	N A	N A	34.5	14	8	N A
400	E3LUPS400KHS	N A								24	9.5	N A	N A
500	E3LUPS500KHS									18	6.8	N A	N A

BREAKER SETTING FOR 400V EASY UPS						
4 POLE DC BREAKER TRIP SETTING						
NSX250S DC (LV438219) + TM200G (LV430100)						
UPS RATING (kW)	1 x E3MCBC7D		2 x E3MCBC7D		3 x E3MCBC7D	
	Ir(A)	Im(A)	Ir(A)	Im(A)	Ir(A)	Im(A)
60	200	520 (FIXED)	175	520 (FIXED)	N A	N A
80	250				N A	N A
100	250				N A	N A
120	N A	N A	250	520 (FIXED)	N A	N A
160	N A	N A				
250	N A	N A	250	520	250	520
300	N A	N A				
400	N A	N A	N A	N A		



LEGEND:

- AND HIGHLIGHTED BY ○ CONNECTED ON SITE  
— CONNECTED IN FACTORY

NOTES:

1. INSTALLATION SHALL COMPLY WITH ALL APPLICABLE NATIONAL, STATE AND LOCAL ELECTRICAL REGULATIONS.
2. REFER TO PRODUCT DOCUMENTATION FOR ADDITIONAL DETAILS PRIOR TO INSTALLATION AND SITE PREPARATION WORK.
3. TORQUE FOR SCREWS TO CONNECT BATTERIES IS 11NM.
4. EARTHING IS ESSENTIAL BEFORE STARTUP.
5. CABLE CONNECTION ON BATTERY TERMINALS MUST BE COVERED WITH PLASTIC CAPS.
- △ 6. THE GROUND CONNECTION TO THE CLASSIC BATTERY CABINET MUST BE MADE DIRECTLY FROM THE UPS CABINET.
- △ 7. FOR CABLE SPECIFICATION, REFER TO INSTALLATION MANUAL.
8. BATTERY TYPE: XP12-150, 36 BLOCKS.

THIS DRAWING AND SPECIFICATIONS HEREIN ARE THE PROPERTY OF SCHNEIDER ELECTRIC AND SHALL NOT BE COPIED, REPRODUCED OR USED IN WHOLE OR IN PART, AS THE BASIS FOR THE MANUFACTURE OR SALE OF ITEMS WITHOUT WRITTEN PERMISSION FROM SCHNEIDER ELECTRIC. THIS DRAWING IS BASED UPON LATEST AVAILABLE INFORMATION AND IS SUBJECT TO CHANGE WITHOUT NOTICE.



TITLE: E3M UPS  
CLASSIC BATTERY CABINET-700mm IEC  
WITH 38Nos. XP12-150 BATTERIES, CONFIG-C  
CABLING DIAGRAM AND RUNTIME DATA

DWG NO:	E3MCBC7D	REV:	0
DRAWN:	BALA	24-JUN-21	FIRST ANGLE PROJECTION
ENGINEER:	S B	29-JUN-21	
APPROVED:	S B	29-JUN-21	

PROJECT: SUBMITTALS DRAWINGS SHEET 3 OF 3