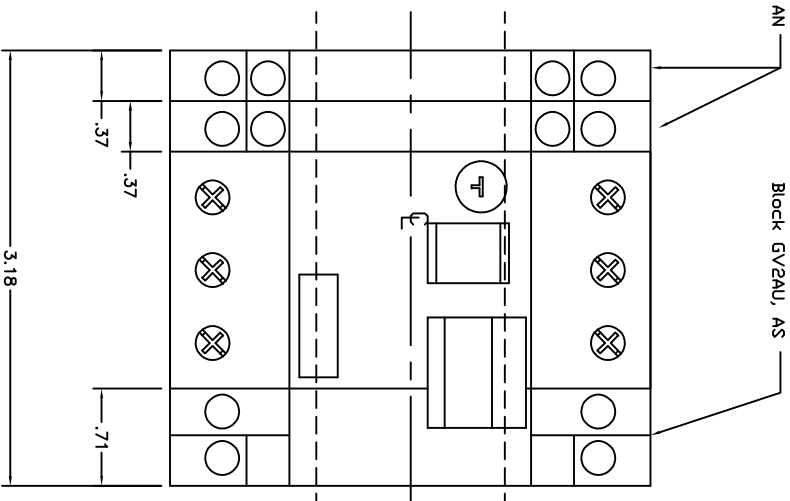
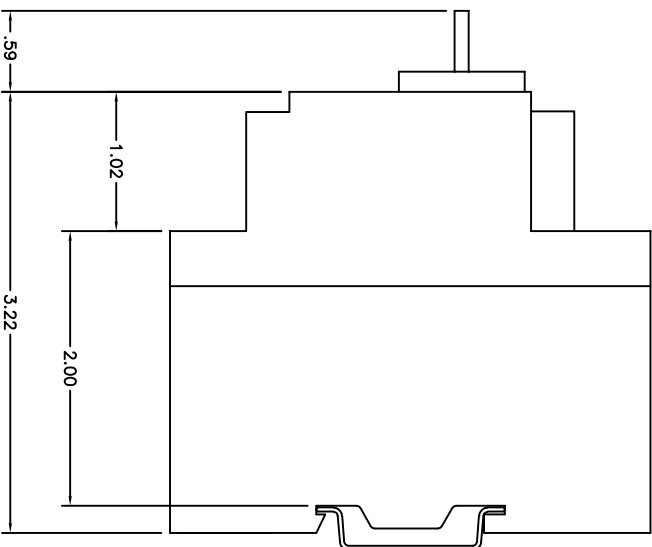
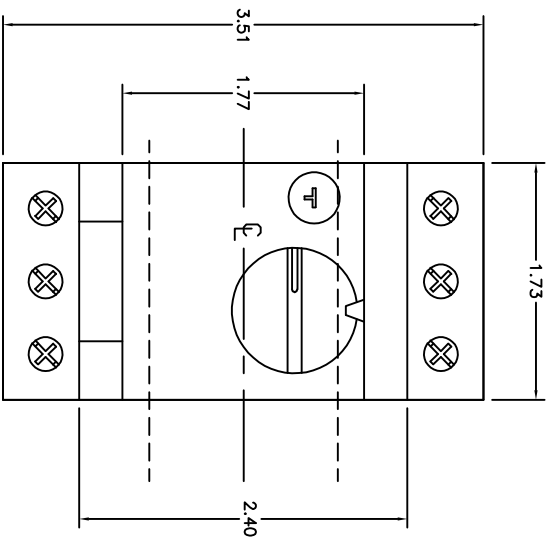


MANUAL STARTER AND PROTECTOR

CURRENT SETTING RANGE (AMPS)	CATALOG NUMBER
.10-.16	GV2 P01
.16-.25	GV2 P02
.25-.40	GV2 P03
.40-.63	GV2 P04
.63-1	GV2 P05
1-1.6	GV2 P06
1.6-2.5	GV2 P07
2.5-4	GV2 P08
4-6	GV2 P10
6-10	GV2 P14
9-14	GV2 P16
13-18	GV2 P20
17-23	GV2 P21
20-25	GV2 P22

(1) = SELECT DESIRED SUFFIX FOR COMPLETE CATALOG NUMBER

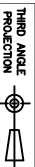


Catalog Number: GV2P(1)  
 Ratings: 600V  
 UL File/CCN: E89451/NLRY  
 CSA File/Class: LR81630/3211 05  
 Meets Standard: IEC 292.1/157.1/204.1  
 Weight: .35kg  
 Wire Size: #8-#16  
 Power: 20 LB-IN  
 Terminal torque: 35mm DIN roll  
 Mounting Hwd: 35mm DIN roll

"THE SQUARE D COMPANY HAS PROPRIETARY RIGHTS TO THE INFORMATION CONTAINED HEREIN. THIS INFORMATION REMAINS THE PROPERTY OF SQUARE D COMPANY AND MAY BE USED ONLY IN CONFORMANCE WITH THE INSTRUCTIONS ISSUED BY SQUARE D COMPANY. USER SHOULD VERIFY DRAWINGS ARE TO THE LATEST/CURRENT REVISION PRIOR TO INCORPORATING IN A DESIGN FILE."

**DO NOT SCALE DRAWING**

UNLESS OTHERWISE SPECIFIED DIMENSIONS ARE IN INCHES



MOTOR CIRCUIT PROTECTOR  
 GV2P(1)

**TOLERANCES**  
 UNLESS OTHERWISE SPECIFIED  
 2 PLACE DECIMALS ± .01



**SQUARE D COMPANY**

DWG# E0203701-01