



EcoStruxure Secure Connect

EcoStruxure™ Secure Connect

Secure remote access solution



Harmony

Discover [Harmony](#)

Advanced operator interface and industrial relays

Harmony operator interface and industrial relays enhance operational efficiency and equipment availability across industrial and building applications. Harmony includes intelligent connected products and edge terminals that visualize, gather and process data, enabling informed operator decisions

Explore our offer

- [Harmony](#) Push Buttons and Switches
- [Harmony](#) HMI Operator Terminals, IPC and EdgeBox
- [Harmony](#) Signaling Devices
- [Harmony](#) Electrical Relays
- [Harmony](#) Safety

General contents

EcoStruxure™ Secure Connect

■ Presentation	page 2
■ Benefits	page 2
□ Efficient and easy to use	page 2
□ Easy to subscribe	page 2
□ Easy to scale, whenever you need.....	page 3
□ Works everywhere, for everyone	page 3
□ Reliable and safe	page 3
□ License options for usage flexibility.....	page 3
■ Architecture	page 3
■ EcoStruxure Secure Connect compatibility	page 4
■ References	page 4
■ Product reference index	page 6



EcoStruxure Secure Connect

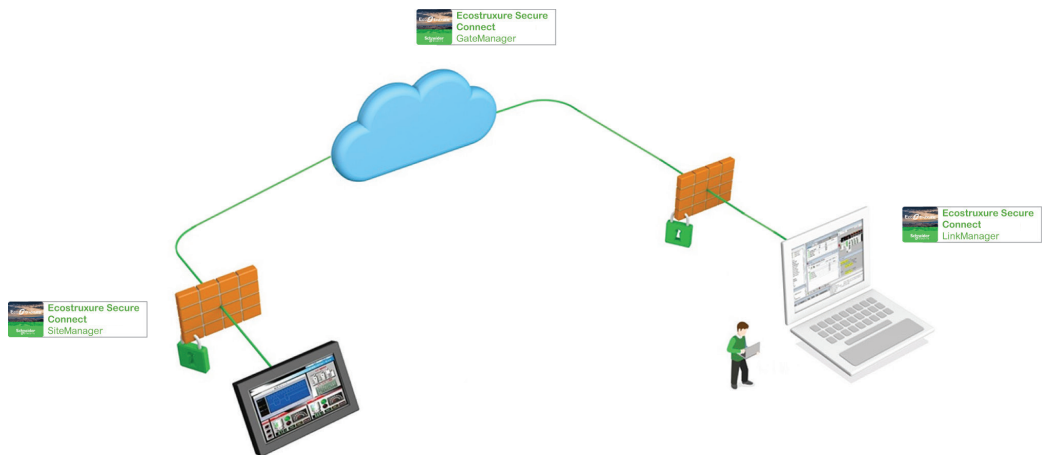
Presentation

EcoStruxure Secure Connect provides a secure connection between remote display units on the work site (via SiteManager) and computers or smart devices in the office (via LinkManager) over a secure central server (GateManager).

With EcoStruxure Secure Connect, technicians and programmers can remotely access the Schneider Electric software and securely update the HMI, PLC, and other connected devices just as though they were present on site. Troubleshooting and repair can also be performed remotely upon request. EcoStruxure Secure Connect LinkManager client for remote access runs on any 64-bit version of Microsoft Windows 10 or Windows 11 operating system. This software adapts to a number of applications such as:

- > Food & Beverage
- > Mining, Minerals & Metals
- > Oil and Gas
- > Water and Wastewater, etc.

EcoStruxure Secure Connect SiteManager software is either pre-embedded (in Harmony HMI) or manually installable on Schneider Electric iPCs.

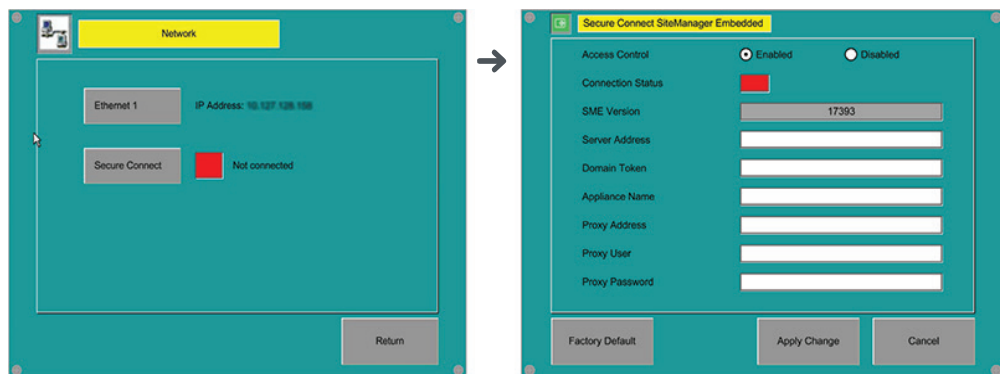


EcoStruxure Secure Connect concept

Benefits

Efficient and easy to use

- > Embedded and ready to use in Harmony HMI panels



Configuration screen

- > Gain remote access to programming, diagnostics, control, and monitoring
- > Speed up machine maintenance and reduce machine downtime

Easy to subscribe

- > Purchase one annual subscription starter pack
- > Add granularly additional equipment licenses based on your needs

Easy to scale, whenever you need

- > Increase the number of LinkManager users or LinkManager mobile users
- > Increase access to more HMI units with additional site managers
- > Program more devices

Works everywhere, for everyone

- > Operable for all applications and segments
- > Available from desktop or smartphone

Reliable and safe

- > Cybersecure (end to end) for both OEMs and end users, and certified by TG Alpha for cybersecurity
- > Secure access to remote devices over the internet
- > Compliant with industry level standards for security, including IEC 62443-3-3

License options for usage flexibility

- > Advanced settings on GateManager secure server
- > Various user statistics available
- > Extended licenses to program more devices (PLC, drives, etc.) connected to the HMI

Architecture

The EcoStruxure Secure Connect solution comprises of three components:

- **GateManager:** The GateManager server operates as a central point for the LinkManager and SiteManager. Both the SiteManager and the LinkManager must be registered with the GateManager before access is provided to the SiteManager network. This creates an encrypted connection between the SiteManager and LinkManager remote computer.

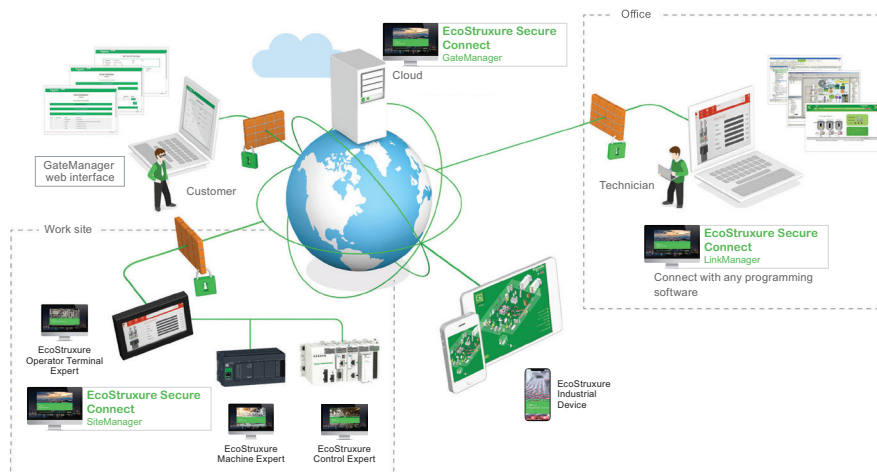
- **SiteManager Embedded (1):** The SiteManager is the embedded component in the existing HMI configuration software. It is the device-monitoring front end for multiple industrial devices in a remote location and enables uninterrupted secure access via GateManager.

It can be purchased in two license formats:

- Basic, for accessing 1 display unit and registering up to 2 agents per display unit
- Extended, for accessing external IP devices (PLCs, iPCs, server, Web camera, etc.) on the same network as the display unit and registering five or more agents per display unit

- **LinkManager/LinkManager Mobile:** The LinkManager is the client on the remote operator's computer. After installation, the user will be able to securely login to the GateManager and remotely connect to the devices represented by the agents on the SiteManager, including the HMI and its connected devices.

LinkManager Mobile is a lightweight version that can be used for Web-enabled devices such as smartphones or tablets to connect to SiteManager.



EcoStruxure Secure Connect for remote programming access to HMI and its connected devices

(1) The setup method for SiteManager Embedded differs depending on the display unit. For more information, please refer to the EcoStruxure Secure Connect User Guide available on our website www.se.com.

EcoStruxure Secure Connect compatibility

The following Harmony HMIs are compatible with EcoStruxure Secure Connect (including SiteManager Embedded):

- Harmony GTU panels
- Harmony GTO panels (1)
- Harmony GTUX panels
- Harmony ST6/STM6
- Harmony Industrial PC (Panel and Box PC)

References

EcoStruxure Secure Connect is available with the following HMI configuration software:

- Vijeo Designer
- EcoStruxure Operator Terminal Expert
- EcoStruxure Machine SCADA Expert
- EcoStruxure Industrial Device App

For more information on supported software versions, please refer to the product data sheet available on our website www.se.com.

EcoStruxure Secure Connect digital licenses

Description	License type	Compatible panels	Reference
EcoStruxure Secure Connect 30-day Free Trial	30-day trial version (free)	Harmony GTU Harmony GTO (1) Harmony GTUX Harmony iPCs Harmony ST6/STM6	VJOCNTFREE30
EcoStruxure Secure Connect Secure Remote Access Digital License - Essential Pack	1x EcoStruxure Secure Connect GateManager 1x EcoStruxure Secure Connect SiteManager Embedded EXTENDED license (5 device agents) 1x EcoStruxure Secure Connect LinkManager 1x EcoStruxure Secure Connect LinkManager Mobile		VJOCNTPACKES
EcoStruxure Secure Connect Secure Remote Access Digital License - Enterprise Pack	1x EcoStruxure Secure Connect GateManager 20x EcoStruxure Secure Connect SiteManager Embedded EXTENDED license (5 device agents) 1x EcoStruxure Secure Connect LinkManager 1x EcoStruxure Secure Connect LinkManager Mobile 1x EcoStruxure Secure Connect GateManager Premium Access		VJOCNTPACKENT

(1) Except for **HMIGTO1300** and **HMIGTO2300**.

References

The following add-on references may be added to any EcoStruxure Secure Connect Pack to extend functionality:

EcoStruxure Secure Connect digital licenses			
Description	License type	Compatible panels	Reference
EcoStruxure Secure Connect LinkManager License	LinkManager	Harmony GTU Harmony GTO (1) Harmony GTUX Harmony iPCs Harmony ST6/STM6	VJOCNTLML
EcoStruxure Secure Connect LinkManager Mobile License	LinkManager Mobile		VJOCNTLMM
EcoStruxure Secure Connect SiteManager Embedded BASIC licenses	SiteManager Embedded BASIC		VJOCNTSMBASIC
EcoStruxure Secure Connect SiteManager Embedded EXTENDED license, 5 device agents	SiteManager Embedded EXTENDED		VJOCNTSMEXT5
1x EcoStruxure Secure Connect SiteManager Embedded EXTENDED license, 10 device agents	SiteManager Embedded EXTENDED		VJOCNTSMEXT10
EcoStruxure Secure Connect GateManager Premium Access	GateManager Premium Access		VJOCNTGMPREM
EcoStruxure Secure Connect User Statistics Activation	Statistics Activation		VJOCNTSTAT

(1) Except for **HMIGTO1300** and **HMIGTO2300**.

V	
VJOCNTFREE30	4
VJOCNTGMPREM	5
VJOCNTLML	5
VJOCNTLMM	5
VJOCNTPACKENT	4
VJOCNTPACKESS	4
VJOCNTSMBASIC	5
VJOCNTSMEXT10	5
VJOCNTSMEXT5	5
VJOCNTSTAT	5

Life Is On



Learn more about our products at
www.se.com

The information provided in this documentation contains general descriptions and/or technical characteristics of the performance of the products contained herein. This documentation is not intended as a substitute for and is not to be used for determining suitability or reliability of these products for specific user applications. It is the duty of any such user or integrator to perform the appropriate and complete risk analysis, evaluation and testing of the products with respect to the relevant specific application or use thereof. Neither Schneider Electric nor any of its affiliates or subsidiaries shall be responsible or liable for misuse of the information contained herein.

Design: Schneider Electric
Photos: Schneider Electric

Schneider Electric Industries SAS

Head Office
35, rue Joseph Monier - CS 30323
F-92500 Rueil-Malmaison Cedex
France

DIA5ED2190101EN
January 2024 - V3.0