

Lexium T, P

Delta robots for pick & place solutions



Lexium

Discover [Lexium](#)

Advanced motion control and robotics

Lexium servo drives, motors, and robotics series are designed for a broad range of motion-centric machines. From single-axis to high-performance multi-axis machines, the **Lexium** range enables high-speed movements and precise positioning in packaging, material handling, material working, electronics, and food and beverage applications.

Explore our offer

- [Lexium](#) Servo Drives and Motors
- [Lexium](#) Integrated Servo Drives
- [Lexium](#) Robotics
- [Lexium](#) Stepper Drives

Life Is On

Schneider
Electric

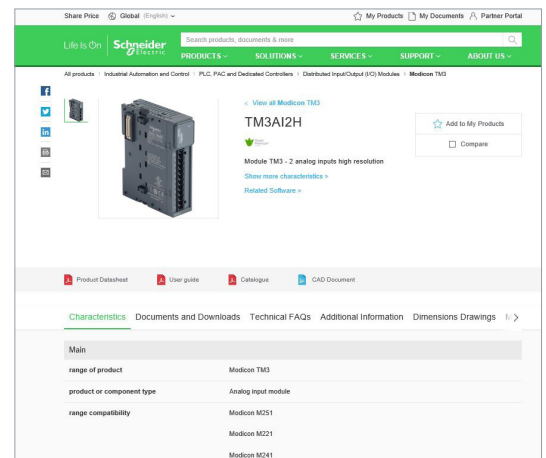
Quick access to product information

Get technical information about your product

References

Modicon TM3 I/O expansion modules for Modicon controllers
Analog I/O modules

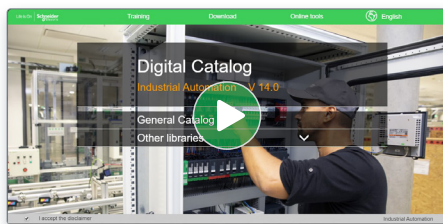
References	Modicon TM3 analog input modules	Input range	Resolution	Input terminal block (T)	Reference	Weight (kg)
2 voltage/current inputs	-10...+10 VDC 0...+10 VDC 0...20 mA / -20 mA	16 bits of	0.001	TM3AI201	0.150	
		16 bits of	0.002	TM3AI202	0.150	
4 voltage/current inputs	-10...+10 VDC 0...+10 VDC 0...20 mA / -20 mA	12 bits of	0.001	TM3AI401	0.200	
		11 bits of	0.002	TM3AI402	0.200	
4 voltage/current or temperature inputs (T)	-10...+10 VDC 0...+10 VDC 0...20 mA / -20 mA	16 bits of	0.001	TM3AI401	0.200	
		11 bits of	0.002	TM3AI402	0.200	
4 differential temperature inputs (T)	-10...+10 VDC 0...+10 VDC 0...20 mA / -20 mA	16 bits of	0.001	TM3AI401	0.200	
		11 bits of	0.002	TM3AI402	0.200	
4 differential temperature inputs (T)	-10...+10 VDC 0...+10 VDC 0...20 mA / -20 mA	16 bits of	0.001	TM3AI401	0.200	
		11 bits of	0.002	TM3AI402	0.200	



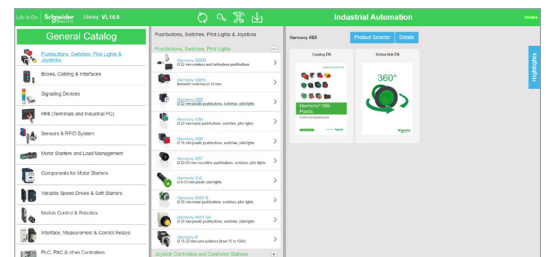
Each commercial reference presented in a catalog contains a hyperlink. Click on it to obtain the technical information of the product:

- Characteristics, Dimensions and drawings, Mounting and clearance, Connections and schemas, Performance curves
- Product image, Instruction sheet, User guide, Product certifications, End of life manual

Find your catalog



- > With just 3 clicks, you can access the Industrial Automation and Control catalogs, in both English and French
- > Consult digital automation catalogs at [Digi-Cat Online](#)

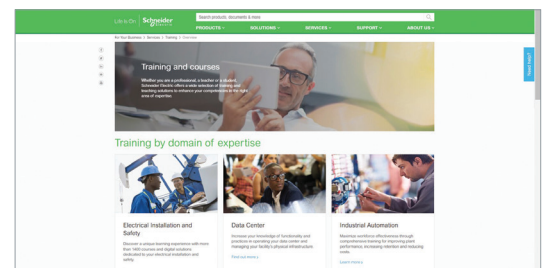


- Up-to-date catalogs
- Embedded product selectors, 360° pictures
- Optimized search by commercial references

Select your training



- > Find the right [Training](#) for your needs on our Global website
- > Locate the training center with the selector tool, using this [link](#)

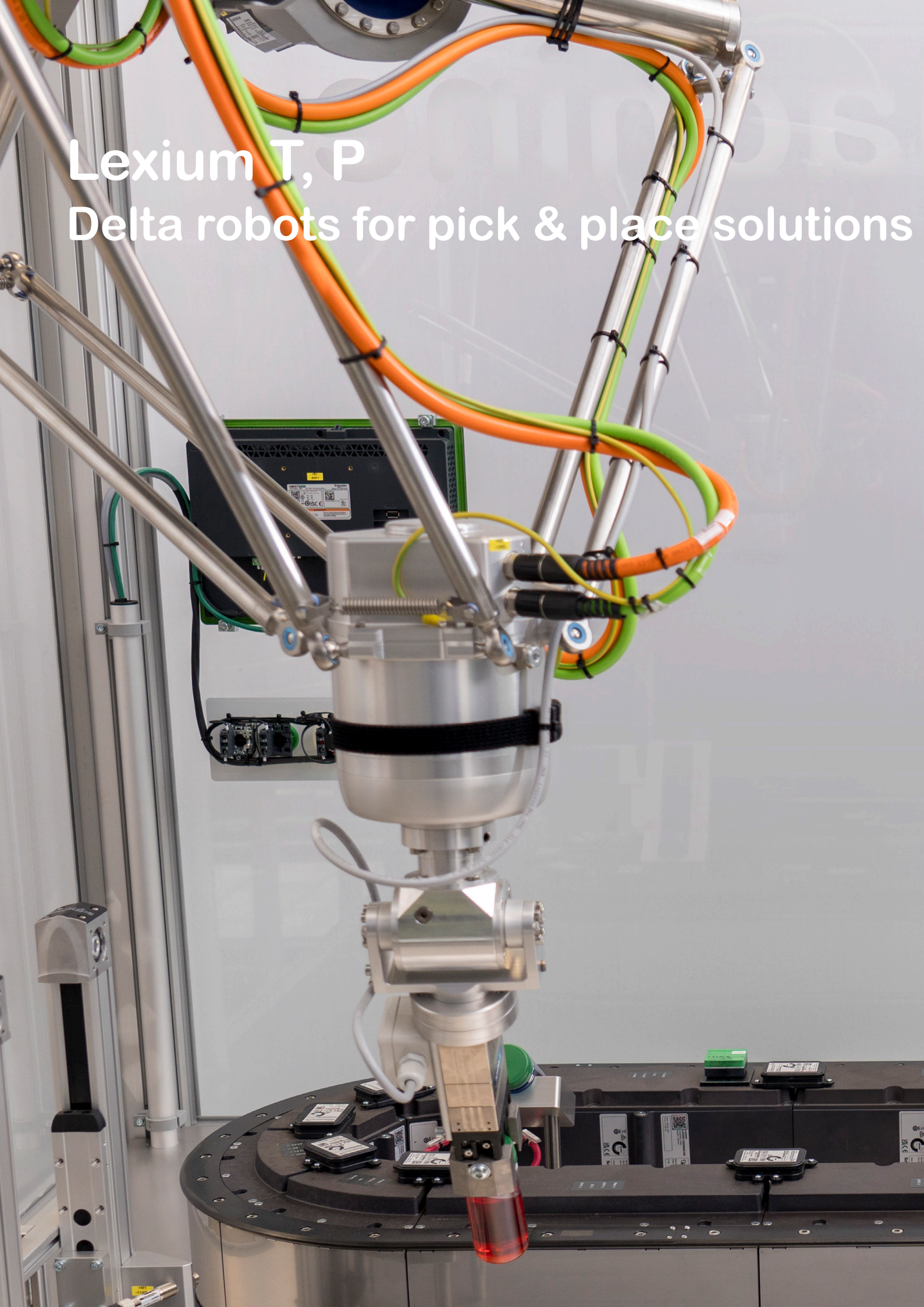


Life Is On

Schneider Electric

Lexium T, P

Delta robots for pick & place solutions



General content

Lexium T, P

Delta robots for pick & place solutions

■ EcoStruxure Machine presentation	Pages 2 and 3
■ Presentation of the range	Page 4
■ Lexium T, Delta 2 robots	
□ Specifications	Page 5
□ Description	Page 5
□ Product reference structure	Page 5
□ Selection guide: Lexium T robots	Pages 6 and 7
□ References	
- T1, T2, and T3 Series	Page 8
- T5 Series	Page 9
- Motors for Lexium T robots	Page 9
- Replacement equipments	Pages 10 and 11
■ Lexium P, Delta 3 robots	
□ Specifications	Page 12
□ Description	Page 13
□ Product reference structure	Page 13
□ Selection guide: Lexium P robots	Pages 14 and 15
□ References	
- P0 Series	Page 16
- P1 Series	Page 17
- P2 Series	Page 18
- P4 Series	Page 19
- P5 Series	Page 20
- P6 Series	Page 21
- Motors for Lexium P robots	Page 22
- Replacement equipments	Pages 22 to 26
- Optional equipments	Page 27
- Cables for optional equipments	Page 27
■ Product reference index	Page 28

To be competitive in today's digital era, machine builders must be innovative. Smart machines, those that are better connected, more flexible, more efficient, and safe, are enabling machine builders to innovate in ways never before possible.

EcoStruxure, Schneider Electric's open, IoT-enabled architecture and platform, offers powerful solutions for the digital era. As part of this, EcoStruxure Machine brings powerful opportunities for machine builders and OEMs, empowering them to offer smart machines and compete in the new, digital era.

EcoStruxure Machine brings together key technologies for product connectivity and edge control on premises, and cloud technologies to provide analytics and digital services.

EcoStruxure Machine helps you bring more innovation and added value to your customers throughout the entire machine life cycle.

Innovation at Every Level for Machines is full systems across three layers:

- Connected products
Our connected products for measuring, actuating, device level monitoring, and control adhere to open standards to provide unmatched integration opportunities and flexibility
- Edge Control
We are IIoT-ready with a proven set of tested and validated reference architectures that enable the design of end-to-end open, connected, and interoperable systems based on industry standards. Ethernet and OPC UA facilitates IT/OT convergence meaning machine builders reap benefits from web interfaces and cloud.
- Apps, Analytics & Services
Seamless integration of machines to the IT layer allows the collection and aggregation of data ready for analysis – for machine builders and end users alike this means increased uptime and the ability to find information faster for more efficient operations and maintenance.

These levels are completely integrated from shop floor to top floor. And we have cloud offers and end-to-end cybersecurity wrapped around.

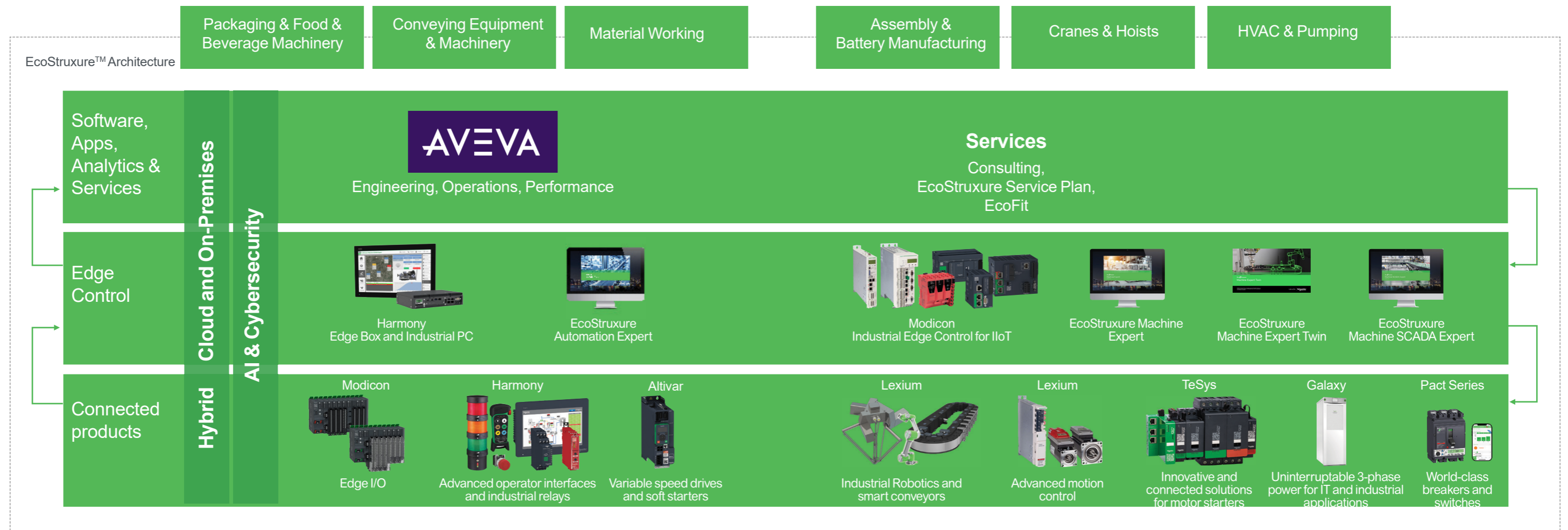
EcoStruxure Machine makes it easier for OEMs/machine builders to offer their customers smarter machines. The advent of smart machines is driven by the changing needs of end users:

- Evolving workforce
- Reducing costs
- Dynamic markets
- Shorter life cycles
- Prioritizing functional safety and cybersecurity

EcoStruxure Machine provides one solution for the whole machine life cycle:

- With Smart Design & Engineering the time to market is reduced by up to 30% using our automated engineering and the simulation capabilities
- During Commissioning & Operation of the machine, resources such as energy, material and loss can be improved, and with seamless integration to the IT world efficiency can be improved by up to 40%
- Smart Maintenance & Services reduces the time for corrective actions up to 50%

EcoStruxure™ Machine



Lexium T, P

Delta robots for pick & place solutions

General



Delta Robots for Pick & Place Packaging Solutions
(1 min.45 s) [Click to open video](#)



Presentation

Lexium T, P are Delta robots for pick & place solutions, developed as an add-on to the PacDrive automation solution system and Multicarrier systems, and designed to satisfy rapidly growing customer demand for robots as an integral part of machine design, for example in packaging machinery. Lexium Delta 2 and Delta 3 robots are designed for fast pick-and-place with payloads of up to 60 kg (Delta 2) and 15 kg (Delta 3).

Complementary of offers (1)

- Adding integrated robotics and advanced mechatronics allows OEMs to respond to the demands of their market by increasing machine throughput, simplifying machine design, and including advanced automation into their machine concepts.
- Lexium T,P Delta robots are part of a complete motion control solution:
 - monitored by LMC Eco/Pro2 motion controllers on a Sercos bus
 - configured with Ecostruxure Machine software
 - combined with Cartesian robots (Linear and multi-axis systems), Cobot robots, and Multicarrier Systems.

Apps, Analytics & Services



[AVEVA™ Insight](#)
Make decisions with complete visibility of your operations and assets in the cloud



Engineering, Operations, Performance



[Extended Reality \(XR\) Solutions](#)
It incorporates Augmented Reality (AR), Virtual Reality (VR), and Mixed Reality (MR) into a single industrial software

Edge control



[Modicon M660](#)
Advanced IPC Motion Controller



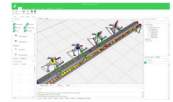
[PacDrive LMC Eco/Pro2](#)
Motion controller for automating machines/lines



[Modicon TM5](#)
Safety logic controller



[EcoStruxure Machine Expert](#)
Software for developing, configuring, and commissioning the entire machine



[EcoStruxure Machine Expert Twin](#)
Scalable digital twin software suite

Connected products



[Lexium 62](#)
Multi axis servo drive system



[Lexium 52](#)
Stand alone servo drive system



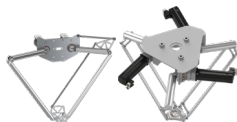
[Lexium 32](#)
Servo drive



[Altivar Machine ATV340S](#)
Variable speed drive



[Lexium Cobot](#)
Cobot Compact Controller



[Lexium T, Lexium P](#)
Delta robot



[Lexium MAX](#)
Multi-axes system for 3 dimensional positioning solutions



[Lexium PAS, PAD](#)
Linear axes



[Lexium MC12](#)
Modular Multicarrier System

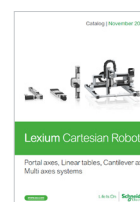


[Lexium SCARA](#)
Scara robot



[Lexium Cobot](#)
Collaborative robot

(1) Please refer to our websites or refer to the catalogs listed beside:

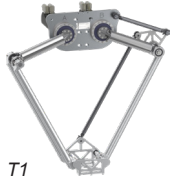


[DIA3ED2241201EN](#) [DIA7ED2160303EN](#) [DIA7ED2160305EN](#) [DIA7ED2220801EN](#) [DIA7ED2210101EN](#) [DIA7ED2210701EN](#)

Lexium T, P

Delta robots for pick & place solutions

Lexium T, Delta 2 robots



T1



T2



T3



T5

Work space (Width) mm (in)	600 (23.5)	800 (31.5)	1,000 (39)	1,500 (59)
Max. height mm (in)	350 mm (13.8)	440 (17.3)	555 (22)	615 (24)

Lexium T, Delta 2 robots

- Lexium T are 2-axis Delta robots, for pick & place solutions, available with four sizes of Work space:

T series

	T1	T2	T3	T5
Work space (Width) mm (in)	600 (23.5)	800 (31.5)	1,000 (39)	1,500 (59)
Max. height mm (in)	350 mm (13.8)	440 (17.3)	555 (22)	615 (24)

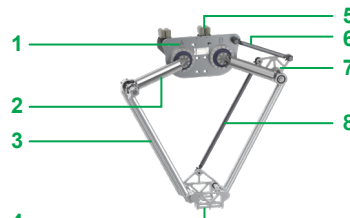
- Lexium T robots have a permanent permissible load of up to 60 kg (132 lb)
 - They are sold ready-to-use (pre-assembled, ready-to-connect mechanics)
 - They use conventional Lexium MH3 Motors with cabinet-mounted servo drives and Lexium 62 ILM integrated drives (1)
- An optional rotational motor can be installed at the tool center point

Specifications of Lexium T, Delta 2 robots

- > High precision and Highly dynamic response
- > Degree of protection up to IP64
- > Flexible mounting capabilities of the parallelogram arm
- > Flexible mounting by switching of the lower arms
- > Low noise level
- > Standard components for mechanisms and drives
- > Referenced ex-factory
- > Compact, angled gearboxes are also available
- > Easy-clean design

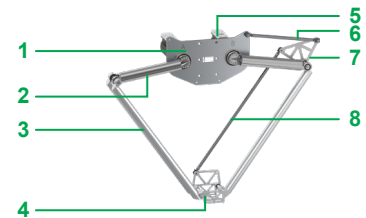
Description

T1



- 1 Mounting plate
- 2 Upper arm (primary arm)
- 3 Lower arm (secondary arm)
- 4 Parallel plate: mounting place of the gripper

T2, T3, T5







- 5 Motor/Gearbox
- 6 Short parallel linkage rod
- 7 Parallel linkage lever
- 8 Long parallel linkage rod

Product reference structure for Lexium T, Delta 2 robots

	VRK	T●	●●	●	●	00	000
Robot kinematics							
VRK							
Robot series							
T1							
T2							
T3							
T5							
Sub series							
L0							
M0							
M1							
WM							
YY							
Option							
F							
C							
Y							
Housing							
NC							
YY							
Hardware code							
00							
Miscellaneous							
000							

Lexium T, P

Delta robots for pick & place solutions
Lexium T, Delta 2 robots

Robot		Lexium T, Delta 2 robots			
Series		T1	T2, T2 HD (1)	T3, T3 HD (1)	T5, T5 HD (1)
					
Number of axes		2-axis			
Work space	Max. width	600 mm (31.5 in)	800 mm (31.5 in)	1,000 mm (39 in)	1,500 mm (59 in)
	Max. height	350 mm (13.8 in)	440 mm (17.3 in)	555 mm (22 in)	615 mm (24 in)
	Unlimited rotation	–	–	–	–
Permanent permissible load		Up to 40 kg (88 lb)	40...60 kg (88...132 lb) (1)	35...50 kg (77...110 lb) (1)	30...45 kg (66...99 lb) (1)
Axis type		Fixed axis (no rotational axis installed)			
Position repeatability (ISO 9283)		0.1 mm (0,0039 in)	0.1 mm (0,0039 in)	0.1 mm (0,0039 in)	0.1 mm (0,0039 in)
Cycles of inch-feet-inch path (max.)		128 cycles/min (2)	148 cycles/min (2)	143 cycles/min (2)	134 cycles/min (2)
Maximum velocity		5.3 m/s (17.4 ft/s)	5.5 m/s (19 ft/s)	6 m/s (19.7 ft/s)	6.8 m/s (22.3 ft/s)
Maximum acceleration	for 0.1 kg (0.22 lb)	49 m/s ² (160 ft/s ²)	–	–	–
	for 1 kg (2.20 lb)	–	37 m/s ² (197 ft/s ²)	62 m/s ² (203 ft/s ²)	58 m/s ² (190 ft/s ²)
	for 1.5 kg (3.31 lb)	40 m/s ² (131 ft/s ²)	–	–	–
	for 10 kg (22.04 lb)	–	33 m/s ² (174 ft/s ²)	41 m/s ² (135 ft/s ²)	48 m/s ² (157 ft/s ²)
Housing		Compact	Compact	Compact	Compact
Heavy Duty version		No	Yes	Yes	Yes
Combined motor type	For main axes	■ Lexium MH3 motors	■ Lexium MH3 motors ■ Lexium 62 ILM integrated drives	■ Lexium MH3 motors ■ Lexium 62 ILM integrated drives	■ Lexium MH3 motors ■ Lexium 62 ILM integrated drives
Robot without motor		On request	On request	On request	On request
Reference		VRKT1●●●●●●●●	VRKT2●●●●●●●●	VRKT3●●●●●●●●	VRKT5●●●●●●●●
See page		8	8	8	9

(1) Loads above the maximum load are possible with restrictions
(2) Depending on the application, and on permissible load.

Lexium T, P

Delta robots for pick & place solutions

Lexium T, Delta 2 robots



VRKT1M0FNC00000



VRKT2M0FNC00000



VRKT2L0FNC00000



VRKT2M1FNC00000



VRKT3L0FNC00000



VRKT3M1FNC00000

T series				
T1 Compact				
Number of axes	2			
Work space (width)	600 mm (31.5 in)			
Max. load	15 kg (33 lb)			
Option	Associated motor or servo motor	Housing	Reference	Weight kg lb
Fixed axis	Lexium MH3 motor	Compact	VRKT1M0FNC00000	36.500/ 80.20

T2 Compact				
Number of axes	2			
Work space (width)	800 mm (31.50 in)			
Max. load	40 kg (88 lb) 60 kg (132 lb) for Heavy duty version			
Option	Associated motor or servo motor	Housing	Reference	Weight kg lb
Fixed axis	Lexium MH3 motor	Compact	VRKT2M0FNC00000	56.000/ 123.00
	Lexium 62 ILM integrated drive	Compact	VRKT2L0FNC00000	64.000/ 141.00
	Lexium MH3 motor Heavy duty	Compact	VRKT2M1FNC00000	60.000/ 132.27
	Without motor (Compatible with Lexium 62 ILM integrated drive)	Compact	VRKT2WMFNC00000	—

T3 Compact				
Number of axes	2			
Work space (width)	1,000 mm (39 in)			
Max. load	35 kg (77 lb) 50 kg (110 lb) for Heavy duty version			
Option	Associated motor or servo motor	Housing	Reference	Weight kg lb
Fixed axis	Lexium MH3 motor	Compact	VRKT3M0FNC00000	60.000/ 132.28
	Lexium 62 ILM integrated drive	Compact	VRKT3L0FNC00000	64.000/ 141.00
	Lexium MH3 motor Heavy duty	Compact	VRKT3M1FNC00000	64.000/ 141.00
	Without motor (Compatible with Lexium 62 ILM integrated drive)	Compact	VRKT3WMFNC00000	—

Lexium T, P Delta robots for pick & place solutions

Lexium T, Delta 2 robots

Motors and integrated servo motors



VRKT5M0FNC00000



VRKT5L0FNC00000



VRKT5M1FNC00000

T series				
T5 Compact				
Number of axes	2			
Work space (width)	1,500 mm (59 in)			
Max. load	30 kg (66 lb) 45 kg (99 lb) for Heavy duty version			
Option	Associated motor or servo motor	Housing	Reference	Weight kg lb
Fixed axis	Lexium MH3 motor	Compact	VRKT5M0FNC00000	60.000/ 132.28
	Lexium 62 ILM integrated drive	Compact	VRKT5L0FNC00000	65.000/ 143.30
	Lexium MH3 motor Heavy duty	Compact	VRKT5M1FNC00000	65.000/ 143.30
	Without motor (Compatible with Lexium 62 ILM integrated drive)	Compact	VRKT5WMFNC00000	—

Motors for Lexium T, Delta 2 robots (1)			
Designation	For use with robot-series	Reference	Weight kg lb
Lexium MH3 motors with rotatable right-angled connectors	VRKT1M0FNC00000, VRKT2M0FNC00000, VRKT3M0FNC00000, VRKT5M0FNC00000	MH31002P02F2200	6.400/ 14.11
	VRKT2M1FNC00000, VRKT3M1FNC00000, VRKT3WMFNC00000, VRKT5M1FNC00000, VRKT5WMFNC00000	MH31003P02F2200	8.150/ 17.97
Integrated servo motor (Lexium 62 ILM integrated drive)	VRKT2L0FNC00000, VRKT3L0FNC00000, VRKT5L0FNC00000, VRKT2WMFNC00000, VRKT3WMFNC00000, VRKT5WMFNC00000	ILM1003P02F0000	8.900/ 19.62



MH3100P02F2200



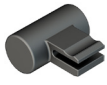
ILM1003P02F0000

(1) Please refer to catalogs ref. [DIA7ED2160308EN](#) and ref. [DIA7ED2160306EN](#)

Lexium T, P

Delta robots for pick & place solutions

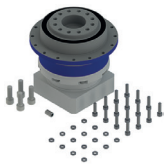
Lexium T, Delta 2 robots
Replacement equipment



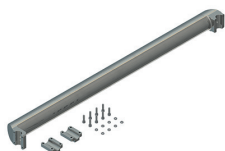
VRKTXYYYYY00001



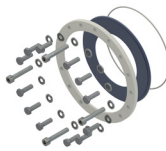
VRKT•YYYYY00002



VRKT•YYYYY00003



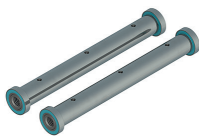
VRKT•YYYYY00004



VRKT1YYYYY00030



VRKT•YYYYY00005

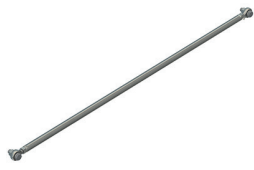


VRKTXYYYYY00006

Replacement equipment for Lexium T, Delta 2 robots				
Designation	Description	For use with robot series	Reference	Weight kg lb
Calibration tool	1x calibration tool	T1, T2, T3, T5	VRKTXYYYYY00001	0.125/ 0.275
Upper arm (primary arm) with bearings and bolts	1x upper arm (primary arm) complete 1x indexing bolt gearing 11x screw upper arm (primary arm)	T1	VRKT1YYYYY00002	6.750/ 14.88
		T2	VRKT2YYYYY00002	6.750/ 14.88
		T3	VRKT3YYYYY00002	6.750/ 14.88
		T5	VRKT5YYYYY00002	6.750/ 14.88
Main gearbox with fasteners and indexing bolt	1x gearbox main axis 16x screw gearbox/mounting plate 4x screw motor/gearbox 1x indexing bolt gearbox	T1	VRKT1YYYYY00003	6.750/ 14.88
		T2, T3, T5	VRKTXYYYYY00003	6.750/ 14.88
Lower arm (secondary arm) with half shells and fasteners	1x lower arm (secondary arm) complete 2x half shell 8x screw half shell	T1	VRKT1YYYYY00004	3.330/ 7.34
		T2	VRKT2YYYYY00004	3.330/ 7.34
		T3	VRKT3YYYYY00004	3.330/ 7.34
		T5	VRKT5YYYYY00004	3.330/ 7.34
Protector caps for the main axes with fasteners	Set for one robot: 2x protector cap 2x support ring 2x O-ring for protector cap 24x socket head screw for protector cap 8x hexagon screw for protector cap 32x sealing washer	T1	VRKT1YYYYY00030	1.200/ 2.64
Parallel plate with bearings and shafts	1x parallel plate complete	T1	VRKT1YYYYY00005	3.035/ 6.801
		T2, T3, T5	VRKTXYYYYY00005	3.035/ 6.801
Two-shafts for parallel plate	2x shaft complete with mounted bearings	T1, T2, T3, T5	VRKTXYYYYY00006	1.075/ 2.369

Lexium T, P Delta robots for pick & place solutions

Lexium T, Delta 2 robots
Replacement equipment



VRKT.YYYYYY00007



VRKT.YYYYYY00008



VRKT.YYYYYY00009



VRKTXYYYYY00010



VRKT.YYYYYY00011



VRKTXYYYYY00012

Replacement equipment for Lexium T, Delta 2 robots

Designation	Description	For use with robot series	Reference	Weight kg lb
Long parallel linkage rod with fasteners	1x linkage rod complete	T1	VRKT1YYYYY00007	1.645/ 3.62
		T2	VRKT2YYYYY00007	1.645/ 3.62
		T3	VRKT3YYYYY00007	1.645/ 3.62
		T5	VRKT5YYYYY00007	1.645/ 3.62
Short parallel linkage rod with fasteners	1x linkage rod complete	T1	VRKT1YYYYY00008	1.129/ 2.48
		T2	VRKT2YYYYY00008	1.129/ 2.48
		T3	VRKT3YYYYY00008	1.129/ 2.48
		T5	VRKT5YYYYY00008	1.129/ 2.48
Parallel linkage lever with bearings	1x lever with shaft and bearings	T1	VRKT1YYYYY00009	1.763/ 3.88
		T2, T3, T5	VRKTXYYYYY00009	1.763/ 3.88
Parallel linkage bearing	2x shell with mounted bearings 8x screw for shell	T1, T2, T3, T5	VRKTXYYYYY00010	0.825/ 1.82
Set of fasteners upper arm (primary arm)	11x screw upper arm (primary arm)	T1	VRKT1YYYYY00011	2.161/ 4.76
		T2, T3, T5	VRKTXYYYYY00011	2.161/ 4.76
Set of mounting shafts for lower arm (secondary arm)	2x mounting shafts for lower arm (secondary arm) 1x distance ring	T1, T2, T3, T5	VRKTXYYYYY00012	0.504/ 1.11

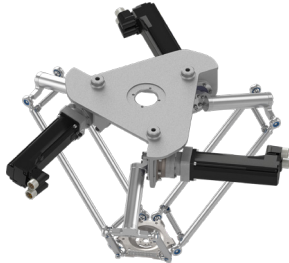
Lexium T, P

Delta robots for pick & place solutions

Lexium P, Delta 3 robots

Lexium P, Delta 3 robots

- Lexium P are 3 to 5-axis Delta robots, for pick & place solutions, capable to perform an unlimited rotation:
 - 3-axis robot: without rotational axis
 - 4-axis robot: with a rotational telescopic axis
 - 5-axis robot: with a double rotational module axis and rotational tilting module available with the following sizes of work space:



P0

Work space (Width) mm
(in)

Max. height mm
(in)

P series

	P0	P0 Extended	P1	P1 Extended	P2	P4	P5	P6	P6 Extended
Work space (Width) mm (in)	400 (15.8)		600 (23.6)		800 (31.5)	1,200 (47.24)	1,400 (55.11)	1,600 (62.9)	
Max. height mm (in)	144 (5.67)	198 (7.8)	206 (8.11)	260 (10.24)	274 (10.80)	425 (16.73)	468 (18.42)	550 (21.65)	657 (25.86)



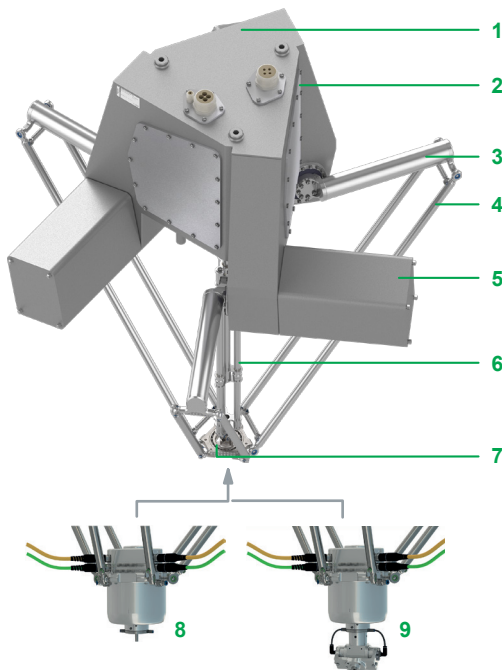
P0 Extended

- Lexium P robots are characterized by their short cycle times and have a permanent permissible load of up to 15 kg (33 lb)
 - They are ready to use (pre-assembled and ready-to-connect mechanics) and also available as a customized version with a motor-gear unit for rotational axis as an alternative to the telescopic axis
 - They can be used for random and/or mixed product flow picking, when combined with a vision system
 - They can be equipped with Lexium SH3 servo motors and Lexium 62 ILM integrated drives. Lexium 62 ILM integrated drives are connected via a single cable from the cabinet to machine-mounted distribution boxes and single, quick-connect cables to each servo motor
- The robot's mounting fixtures are located on the top (P4 Standard series), which reduces the occurrence of the robot arms colliding with the frame, even at extreme deflection
- The Rotational modules provide to Lexium P robots a higher torque and/or better repeatability
- The Double rotational modules provide to Lexium P robots the capability to rotate the gripper with one rotational axis and to perform clamp/unclamp movements with the second rotational axis
- The Tilting modules make it possible, for instance, to tilt products by 90° and raise them upright. The rotational movement of the motor shaft is converted into a tilting movement by a pre-mounted bevel gearbox
- The Rotational tilting modules offer a rotary movement of the gripper in addition to the tilting movement

Specifications of Lexium P, Delta 3 robots

- > Hygienic and food-grade design
- > IP69K protection class available
- > 5-Axis delta robot available
- > High precision and Highly dynamic response
- > IP65 rated, sealed stainless steel design for pharmaceutical and food applications (IP69k for robots on the moving parts)
- > Optimized tube/cable mounting through the parallel plate reduces occurrence of collision with products and machine parts
- > Suitable for Washdown applications
- > Low noise level
- > Standard components for mechanisms and drives
- > No calibration at customer site required
- > Compact design for ceiling mounting
- > Three or four degrees of freedom with or without rotational axis
- > Patented, completely welded stainless steel lower arms, no gluing, adapted for usage with cleaning fluids
- > Automatic recalibration without tools

Description








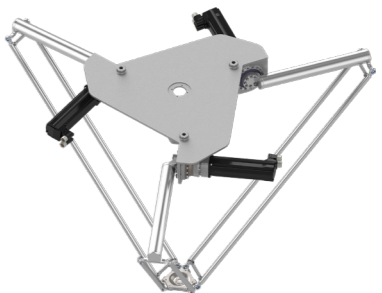
- 1 Housing
- 2 Maintenance cover
- 3 Upper arm (primary arm)
- 4 Lower arm (secondary arm)
- 5 Motor cover (covering motor and gearbox)
- 6 Telescopic axis
- 7 Parallel plate: mounting place of the gripper.
Can be replaced with optional equipment such as:
- 8 Rotational module
- 9 or a Tilting module

Product reference structure for Lexium P, Delta 3 robots

	VRK	P●	●●	●	●●	●●	●	●●
Robot kinematics								
VRK								
Robot series								
P0								
P1								
P2								
P4								
P5								
P6								
Sub series								
S0								
L0								
WM								
YY								
Option								
R								
F								
M								
C								
Y								
Housing								
WD								
NF								
NO								
WF								
NC								
01								
YY								
Hardware code								
00								
02								
Working space								
0								
E								
●								
Miscellaneous								
00								
45								
●●								

Lexium T, P

Delta robots for pick & place solutions
Lexium P, Delta 3 robots

Robot		Lexium P, Delta 3 robots					
Series		P0	P1	P2	P4	P5	P6
							
Number of axes		3...5					
Work space	Max. width	400 mm (15.8 in)	600 mm (23.6 in)	800 mm (31.5 in)	1,200 mm (47.24 in)	1,400 mm (55.11 in)	1,600 mm (62.9 in)
	Max. height	144 mm (5.67 in)	206 mm (8.11 in)	274 mm (10.80 in)	425 mm (16.73 in)	468 mm (18.42 in)	550 mm (21.65 in)
	Max. height for Extended work space	198 mm (7.8 in)	260 mm (10.24 in)	-	-	-	657 mm (25.86 in)
	Unlimited rotation	Yes	Yes	Yes	Yes	Yes	Yes
Permanent permissible load		Up to 10 kg (up to 22 lb)	Up to 10 kg (up to 22 lb)	Up to 15 kg (up to 33 lb)	Up to 15 kg (up to 33 lb)	Up to 15 kg (up to 33 lb)	Up to 10 kg (up to 22 lb) Up to 15 kg (up to 33 lb) (3)
Axis type		<ul style="list-style-type: none"> Fixed axis (no rotational axis installed) Rotational axis 	<ul style="list-style-type: none"> Fixed axis (no rotational axis installed) Rotational axis 	<ul style="list-style-type: none"> Fixed axis (no rotational axis installed) Rotational axis 	<ul style="list-style-type: none"> Fixed axis (no rotational axis installed) Rotational axis 	<ul style="list-style-type: none"> Fixed axis (no rotational axis installed) Rotational axis 	<ul style="list-style-type: none"> Fixed axis (no rotational axis installed) Rotational axis
Position repeatability (ISO 9283)		0.05 mm (0.0020 in)	0.05 mm (0.0020 in)	0.1 mm (0.0039 in)	0.1 mm (0.0039 in)	0.1 mm (0.0039 in)	0.1 mm (0.0039 in)
Cycles of inch-feet-inch path (max.)		244 ...250 cycles/min (2)	223...232 cycles/min (2)	250 cycles/min (2)	208 cycles/min (2)	205 cycles/min (2)	180 cycles/min (2)
Maximum velocity		6 m/s (19.7 ft/s)	6 m/s (19.7 ft/s)	10 m/s (33 ft/s)	10 m/s (33 ft/s)	10 m/s (33 ft/s)	10 m/s (33 ft/s)
Maximum acceleration	for 1 kg (2.20 lb)	125 m/s ² (410 ft/s ²)	125 m/s ² (410 ft/s ²)	120 m/s ² (394 ft/s ²)	100 m/s ² (328 ft/s ²)	90 m/s ² (295 ft/s ²)	80 m/s ² (262 ft/s ²)
	for 1.5 kg (3.31 lb)	120 m/s ² (394 ft/s ²)	120 m/s ² (394 ft/s ²)	90 m/s ² (295 ft/s ²)	75 m/s ² (246 ft/s ²)	70 m/s ² (230 ft/s ²)	60 m/s ² (197 ft/s ²)
	for 10 kg (22.04 lb)	(3)	(3)	(3)	(3)	(3)	(3)
Housing (pictures are showing the Compact Housing)		<ul style="list-style-type: none"> Compact Compact with Extended work space Flat housing, Washdown Flat housing, Washdown with Extended work space 	<ul style="list-style-type: none"> Compact Compact with Extended work space Flat housing, Washdown Flat housing, Washdown with Extended work space 	<ul style="list-style-type: none"> Compact Standard housing, Washdown 	<ul style="list-style-type: none"> Compact Flat housing, Washdown Standard housing, Washdown Standard housing, not Washdown 	<ul style="list-style-type: none"> Compact Flat housing, Washdown 	<ul style="list-style-type: none"> Compact Compact with Extended work space Flat housing, Washdown Flat housing, Washdown with Extended work space
Combined motor type	For Main axis	Lexium Lexium SH3 motors	Lexium Lexium SH3 motors	Lexium Lexium SH3 motors Lexium 62 ILM integrated drives	Lexium Lexium SH3 motors Lexium 62 ILM integrated drives	Lexium Lexium SH3 motors Lexium 62 ILM integrated drives	Lexium Lexium SH3 motors Lexium 62 ILM integrated drives
	For the rotational axis	Lexium MH3 motors	Lexium MH3 motors	Lexium Lexium SH3 motors Lexium 62 ILM integrated drives	Lexium Lexium SH3 motors Lexium 62 ILM integrated drives	Lexium Lexium SH3 motors Lexium 62 ILM integrated drives	Lexium Lexium SH3 motors Lexium 62 ILM integrated drives
Robot without motor		On request	On request	Available	Available	On request	Available
Reference		VRKP0●●●●●●●●	VRKP1●●●●●●●●	VRKP2●●●●●●●●	VRKP4●●●●●●●●	VRKP5●●●●●●●●	VRKP6●●●●●●●●
See page		16	17	18	19	20	21

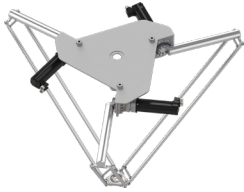
(1) Heavy Duty version
(2) Depending on the application, and on permissible load
(3) Loads above the maximum load are possible with restrictions

Lexium T, P

Delta robots for pick & place solutions

Lexium P, Delta 3 robots

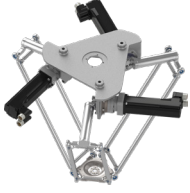
Motors and integrated servo motors



VRKP0S0FNC00000



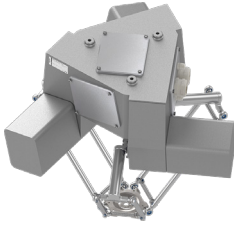
VRKP0S0RNC00000



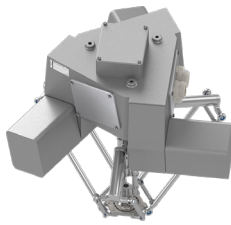
VRKP0S0FNC00E00



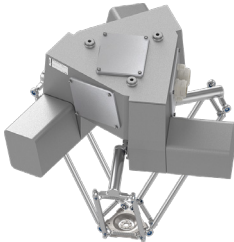
VRKP0S0RNC00E00



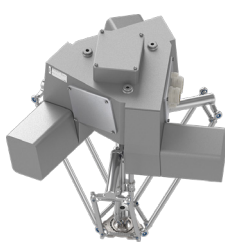
VRKP0S0FWF02000



VRKP0S0RWF02000



VRKP0S0FWF02E00



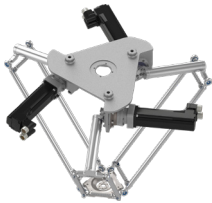
VRKP0S0RWF02E00

P series				
Number of axes	3...5			
Work space (width)	400 mm (15.7 in)			
Max. load	10 kg (22 lb)			
Option	Associated motor or servo motor	Housing	Reference	Weight kg lb
P0 Compact				
Fixed axis	Lexium SH3 motor	Compact	VRKP0S0FNC00000	27.600 60.85
Rotational axis	Lexium SH3 motor	Compact	VRKP0S0RNC00000	
P0 Compact Extended				
Fixed axis	Lexium SH3 motor	Compact Extended	VRKP0S0FNC00E00	27.800 61.29
Rotational axis	MH3 motor	Compact Extended	VRKP0S0RNC00E00	
P0 Flat				
Fixed axis	Lexium SH3 motor	Flat, Washdown	VRKP0S0FWF02000	60,000 132.27
Rotational axis	Lexium SH3 motor	Flat, Washdown	VRKP0S0RWF02000	60,000 132.27
P0 Flat Extended				
Fixed axis	Lexium SH3 motor	Flat Extended, Washdown	VRKP0S0FWF02E00	60.200 132.71
Rotational axis	Lexium SH3 motor	Flat Extended, Washdown	VRKP0S0RWF02E00	60.200 132.71

Lexium T, P

Delta robots for pick & place solutions

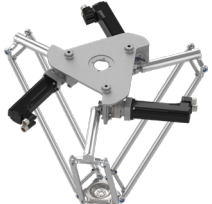
Lexium P, Delta 3 robots



VRKP1S0FNC00000



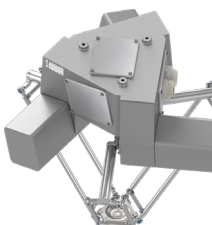
VRKP1S0RNC00000



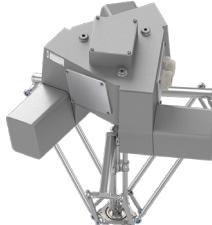
VRKP1S0FNC00E00



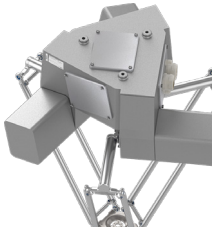
VRKP1S0RNC00E00



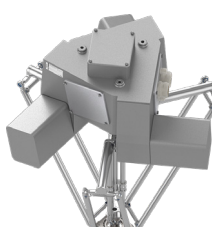
VRKP1S0FWF02000



VRKP1S0RWF02000



VRKP1S0FWF02E00



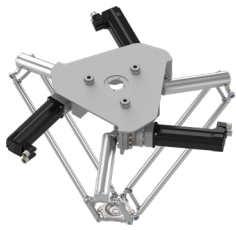
VRKP1S0RWF02E00

P series				
Number of axes	3...5			
Work space (width)	600 mm (23.6 in)			
Max. load	10 kg (22 lb)			
Option	Associated motor or servo motor	Housing	Reference	Weight kg lb
P1 Compact				
Fixed axis	Lexium SH3 motor	Compact	VRKP1S0FNC00000	27.900 61.51
Rotational axis	MH3 motor	Compact	VRKP1S0RNC00000	
P1 Compact Extended				
Fixed axis	Lexium SH3 motor	Compact Extended	VRKP1S0FNC00E00	28.300 62.39
Rotational axis	MH3 motor	Compact Extended	VRKP1S0RNC00E00	
P1 Flat				
Fixed axis	Lexium SH3 motor	Flat, Washdown	VRKP1S0FWF02000	60.400 133.15
Rotational axis	Lexium SH3 motor	Flat, Washdown	VRKP1S0RWF02000	60.400 133.15
P1 Flat Extended				
Fixed axis	Lexium SH3 motor	Flat Extended, Washdown	VRKP1S0FWF02E00	60.600 133.60
Rotational axis	Lexium SH3 motor	Flat Extended, Washdown	VRKP1S0RWF02E00	60.600 133.60

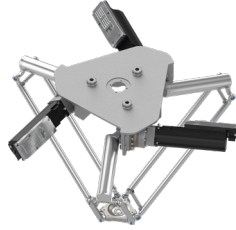
Lexium T, P

Delta robots for pick & place solutions

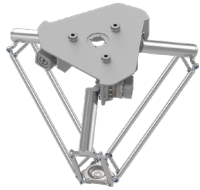
Lexium P, Delta 3 robots



VRKP2S0FNC00000



VRKP2L0FNC00000



VRKP2WMFNC00000



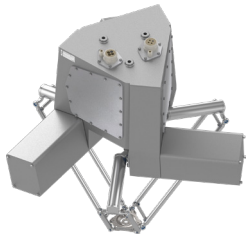
VRKP2S0RNC00000



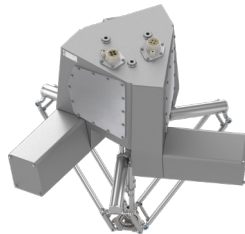
VRKP2L0RNC00000



VRKP2WMRNC00000



VRKP2S0FWD00000



VRKP2S0RWD00000

P series				
Number of axes	3...5			
Work space (width)	800 mm (31.50 in)			
Max. load	15 kg (33 lb)			
Option	Associated motor or servo motor	Housing	Reference	Weight kg/lb
P2 Compact				
Fixed axis	Lexium SH3 motor	Compact	VRKP2S0FNC00000	70.000/ 154.32
	Lexium 62 ILM integrated drive	Compact	VRKP2L0FNC00000	55.000/ 121.25
	Without motor (Compatible with Lexium SH3 motor or Lexium 62 ILM integrated drive)	Compact	VRKP2WMFNC00000	70.000/ 154.32
Rotational axis	Lexium SH3 motor	Compact	VRKP2S0RNC00000	70.000/ 154.32
	Lexium 62 ILM integrated drive	Compact	VRKP2L0RNC00000	
	Without motor (Compatible with Lexium SH3 motor or Lexium 62 ILM integrated drive)	Compact	VRKP2WMRNC00000	70.000/ 154.32
P2 Standard				
Fixed axis	Lexium SH3 motor	Standard, Washdown	VRKP2S0FWD00000	110.000/ 242.51
	Lexium SH3 motor	Standard, Washdown	VRKP2S0RWD00000	

Lexium T, P

Delta robots for pick & place solutions

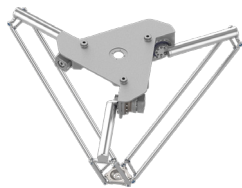
Lexium P, Delta 3 robots



VRKP4S0FNC0000



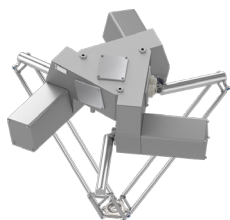
VRKP4L0FNC0000
VRKP4S0RNC0000
VRKP4L0RNC0000



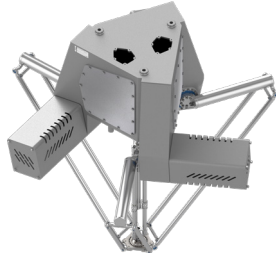
VRKP4WMFNC0000



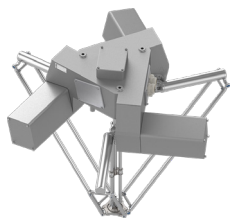
VRKP4WMRNC0000



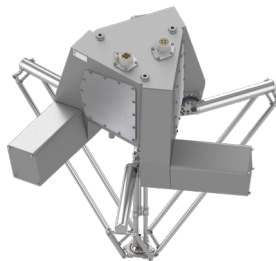
VRKP4S0FWF02000



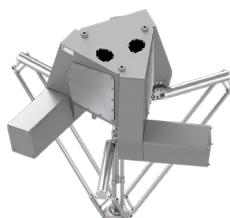
VRKP4L0FNF00000
VRKP4L0RNF00000



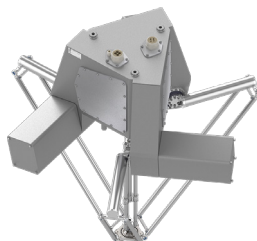
VRKP4S0RWF02000



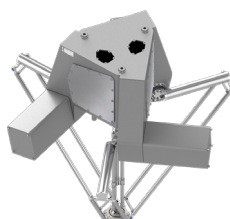
VRKP4S0FWD00000
VRKP4L0FNO00000
VRKP4S0RWD00000
VRKP4L0RNO00000



VRKP4L0FWD00000



VRKP4S4RWD00000



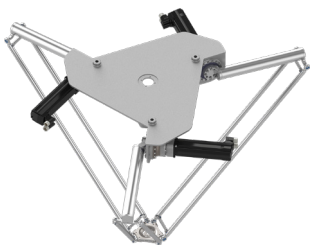
VRKP4L0RWD00000

P series				
Number of axes	3...5			
Work space (width)	1,200 mm (47.24 in)			
Max. load	15 kg (33 lb)			
Option	Associated motor or servo motor	Housing	Reference	Weight kg/lb
P4 Compact				
Fixed axis	Lexium SH3 motor	Compact	VRKP4S0FNC00000	75.000/ 165.35
	Lexium 62 ILM integrated drive	Compact	VRKP4L0FNC00000	75.000/ 165.35
	Without motor	Compact	VRKP4WMFNC00000	–
Rotational axis	Lexium SH3 motor	Compact	VRKP4S0RNC00000	75.000/ 165.35
	Lexium 62 ILM integrated drive	Compact	VRKP4L0RNC00000	–
	Without motor	Compact	VRKP4WMRNC00000	–
P4 Flat				
Fixed axis	Lexium SH3 motor	Flat, Washdown	VRKP4S0FWF02000	100.000/ 220.46
	Lexium 62 ILM integrated drive	Flat, Not Washdown	VRKP4L0FNF00000	110.000/ 242.50
Rotational axis	Lexium SH3 motor	Flat, Washdown	VRKP4S0RWF02000	100.000/ 220.46
	Lexium 62 ILM integrated drive	Flat, Not Washdown	VRKP4L0RNF00000	110.000/ 242.50
P4 Standard				
Fixed axis	Lexium SH3 motor	Standard, Washdown	VRKP4S0FWD00000	120.000/ 264.55
	Lexium 62 ILM integrated drive	Standard, Not Washdown	VRKP4L0FNO00000	115.000/ 253.53
		Standard, Washdown	VRKP4L0FWD00000	120.000/ 264.55
Rotational axis	Lexium SH3 motor	Washdown	VRKP4S0RWD00000	120.000/ 264.55
	4x Lexium SH3 motors	Washdown	VRKP4S4RWD00000	120.000/ 264.55
	Lexium 62 ILM integrated drive	Not Washdown	VRKP4L0RNO00000	120.000/ 264.55
	Washdown	VRKP4L0RWD00000	120.000/ 264.55	

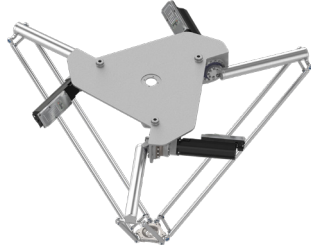
Lexium T, P

Delta robots for pick & place solutions

Lexium P, Delta 3 robots



VRKP5S0FNC00000



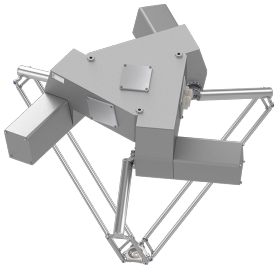
VRKP5L0FNC00000



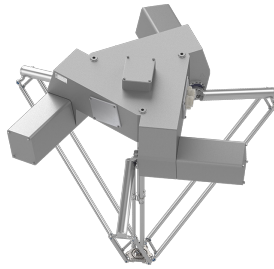
VRKP5S0RNC00000



VRKP5L0RNC00000



VRKP5S0FWF02000

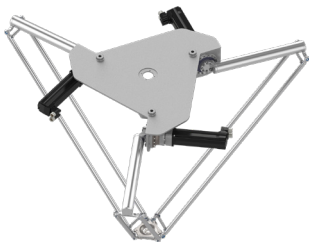


VRKP5S0RWF02000

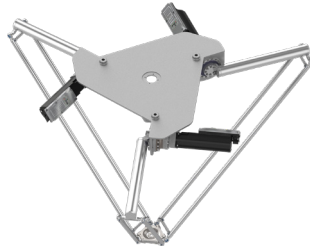
P series				
Number of axes	3...5			
Work space (width)	1,400 mm (55.11 in)			
Max. load	15 kg (33 lb)			
Option	Associated motor or servo motor	Housing	Reference	Weight kg/lb
P5 Compact				
Fixed axis	Lexium SH3 motor	Compact	VRKP5S0FNC00000	80.000/ 176.36
	Lexium 62 ILM integrated drive	Compact	VRKP5L0FNC00000	
P5 Flat				
Fixed axis	Lexium SH3 motor	Flat, Washdown	VRKP5S0FWF02000	80.000/ 176.36
Rotational axis	Lexium SH3 motor	Compact	VRKP5S0RNC00000	
	Lexium 62 ILM integrated drive	Compact	VRKP5L0RNC00000	
Rotational axis	Lexium SH3 motor	Flat, Washdown	VRKP5S0RWF02000	

Lexium T, P Delta robots for pick & place solutions

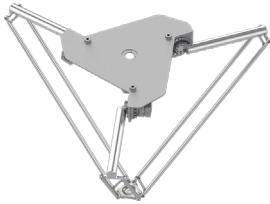
Lexium P, Delta 3 robots



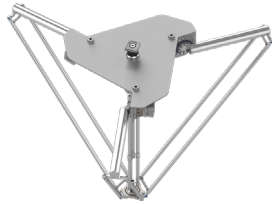
VRKP6S0FNC00000/S0RNC00000



VRKP6L0FNC00000/L0RNC00000



VRKP6WMFNC00000



VRKP6WMRNC00000



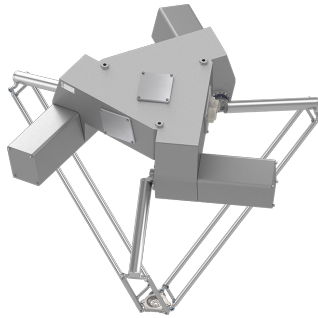
VRKP6S0FNC00E00



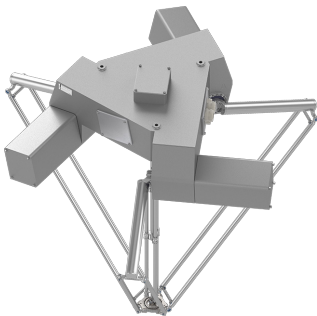
VRKP6S0RNC00E00



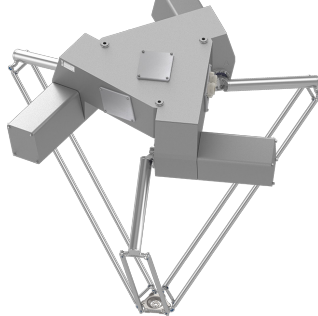
VRKP6L0RNC00E00



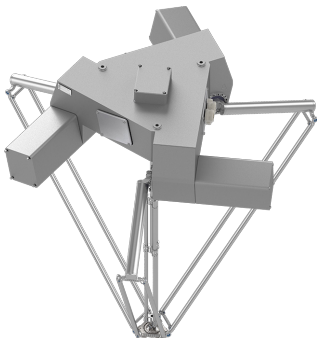
VRKP6S0FWF02000



VRKP6S0RWF02000



VRKP6S0FWF02E00



VRKP6S0RWF02E00

P series

Number of axes	3...5			
Work space (width)	1,600 mm (62.9 in)			
Max. load	<ul style="list-style-type: none"> ■ 10 kg (22 lb) for P6 Compact and P6 Compact Extended (Up to 15 kg (33 lb) with restrictions) ■ 15 kg (33 lb) for P6 Flat and P6 Flat Extended 			

Option	Associated motor or servo motor	Housing	Reference	Weight kg/lb
--------	---------------------------------	---------	-----------	--------------

P6 Compact

Fixed axis	Lexium SH3 motor	Compact	VRKP6S0FNC00000	80.000/ 176.36
	Lexium 62 ILM integrated drive	Compact	VRKP6L0FNC00000	
	Without motor	Compact	VRKP6WMFNC00000	–

Rotational axis	Lexium SH3 motor	Compact	VRKP6S0RNC00000	80.000/ 176.36
------------------------	------------------	---------	---------------------------------	-------------------

Lexium 62 ILM integrated drive	Compact	VRKP6L0RNC00000	
--------------------------------	---------	---------------------------------	--

Without motor	Compact	VRKP6WMRNC00000	–
---------------	---------	---------------------------------	---

P6 Compact Extended

Fixed axis	Lexium SH3 motor	Compact, Extended	VRKP6S0FNC00E00	80.000/ 176.36
-------------------	------------------	-------------------	---------------------------------	-------------------

Rotational axis	Lexium SH3 motor	Compact, Extended	VRKP6S0RNC00E00	
------------------------	------------------	-------------------	---------------------------------	--

Lexium 62 ILM integrated drive	Compact, Extended	VRKP6L0RNC00E00	–
--------------------------------	-------------------	---------------------------------	---

P6 Flat

Fixed axis	Lexium SH3 motor	Flat, Washdown	VRKP6S0FWF02000	80.000/ 176.36
-------------------	------------------	----------------	---------------------------------	-------------------

Rotational axis	Lexium SH3 motor	Flat, Washdown	VRKP6S0RWF02000	80.000/ 176.36
------------------------	------------------	----------------	---------------------------------	-------------------

P6 Flat Extended

Fixed axis	Lexium SH3 motor	Flat, Extended, Washdown	VRKP6S0FWF02E00	115.000/ 253.53
-------------------	------------------	--------------------------	---------------------------------	--------------------

Rotational axis	Lexium SH3 motor	Flat, Extended, Washdown	VRKP6S0RWF02E00	115.000/ 253.53
------------------------	------------------	--------------------------	---------------------------------	--------------------

Lexium T, P

Delta robots for pick & place solutions

Lexium P, Delta 3 robots
Replacement equipment



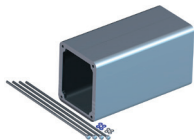
MH30701P02F2200



SH30702P02F2000
SH30553P02F2000
SH30703P02F2000



ILM0702P02F0000
ILM0703P02F0000



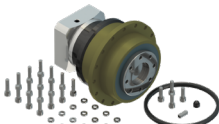
VRKP4YYYYY00001



VRKP4YYYYY00002



VRKP1YYYYY00003



VRKP4YYYYY01003



VRKP4YYYYY00006



VRKP4YYYYY00010



VRKP4YYYYY00011



VRKP4YYYYY00012



VRKP4YYYYY00014



VRKP4YYYYY00015

Motors for Lexium P, Delta 3 robots (1)

Designation	For use with robot-series	Reference	Weight kg/lb
Motors for rotational axis			
Lexium MH3 motors	P0, P0 Extended, P1, P1 Extended	MH30701P02F2200	2.600/ 5.73
Lexium Lexium SH3 motors	VRKP2S0R●●●00000 VRKP4S0R●●●00000 VRKP5S0R●●●00000 VRKP6S0R●●●00000	SH30702P02F2000	3.000/ 6.61
Integrated servo motors (Lexium 62 ILM integrated drive)	P2, P4, P5, P6, P6 Extended	ILM0702P02F0000	3.700/ 8.16
Motors for Main axis			
Lexium Lexium SH3 motors	P0, P1	SH30553P02F2000	1.900/ 4.19
	P2, P4, P5, P6, P6 Extended	SH30703P02F2000	3.800/ 8.38
Integrated servo motors (Lexium 62 ILM integrated drive)	P2, P4, P5, P6, P6 Extended	ILM0703P02F0000	4.700/ 10.36

Replacement equipment for Lexium P, Delta 3 robots

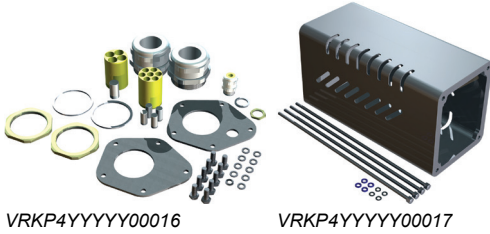
Designation	Description	For use with robot series	Reference	Weight kg/lb
Motor cover with fasteners, without seal	1x motor cover 4x threaded rod 4x sealing washer 4x captive washer	VRKP2●●●WD VRKP4●●●WD VRKP4●●●NO VRKP4●●●CW VRKP4●●●WF VRKP4●●●NF	VRKP4YYYYY00001	—
Upper arm (primary arm) with ball pins and indexing bolt, and fastener	1x upper arm complete 1x indexing bolt gearing 7x titanium screw upper arm	P0 P1 P2 P4 P5 P6	VRKP0YYYYY00002 VRKP1YYYYY00002 VRKP2YYYYY00002 VRKP4YYYYY00002 VRKP5YYYYY00002 VRKP6YYYYY00002	2.360/ 5.20
Gear box for the main axis with fasteners and indexing bolt	1x gearbox main axis 16x screw gearbox to housing 16x lock washer gearbox to housing 4x screw motor to gearbox 1x indexing bolt gearbox 1x quad ring 1x grounding cap for motor	P0, P1 P2, P4, P5, P6, P6 Extended	VRKP1YYYYY00003 VRKP4YYYYY01003	—
Parallel plate	1x parallel plate 3 axes, with ball pins	Lexium P robots	VRKP4YYYYY00006	—
Guiding tubes for the telescopic axis	3x lower tube 16 1x upper tube 20	P0 P0 Extended P1 P1 Extended P2 P4 P5 P6 P6 Extended	VRKP0YYYYY00010 VRKP0YYYYY00E10 VRKP1YYYYY00010 VRKP1YYYYY00E10 VRKP2YYYYY00010 VRKP4YYYYY00010 VRKP5YYYYY00010 VRKP6YYYYY00010 VRKP6YYYYY00E10	1.250/ 2.75
Miscellaneous fastener for the telescopic axis	1x clamping cone, large 1x clamping sleeve, large 1x washer, large 6x washer, small 6x clamping cone, small 6x clamping sleeve, small 1x cover for universal joint 7x clamping screw 1x screw for universal joint, large 1x screw for universal joint, small 6x countersunk screw for universal joint 2x straight pin for universal joint	Lexium P robots	VRKP4YYYYY00011	—
Standard slide films	3x slide film 20 mm 9x slide film 16 mm	Lexium P robots	VRKP4YYYYY00012	—
Gearbox for the rotational axis with fastener and sealings	1x gearbox rotational axis 1x O-ring rotational motor 4x sealing washer for rotational motor 4x screw motor to gearbox 4x screw gearbox rotational axis to housing	Lexium P robots	VRKP4YYYYY00014	—
Maintenance cover with fasteners	1x maintenance cover 14x screw for maintenance cover 14x sealing washer for maintenance cover	VRKP2●●●WD VRKP4●●●WD VRKP4●●●NO VRKP4●●●CW	VRKP4YYYYY00015	0.790/ 1.74

(1) Please refer to catalogs ref. [DIA7ED2160308EN](#) and ref. [DIA7ED2160306EN](#)

Lexium T, P

Delta robots for pick & place solutions

Lexium P, Delta 3 robots
Replacement equipment



VRKP4YYYYY00016

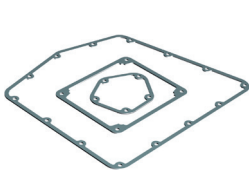
VRKP4YYYYY00017



VRKP4YYYYY00018



VRKP4YYYYY00019



VRKP4YYYYY00020



VRKP4YYYYY00021



VRKP4YYYYY00022



VRKP4YYYYY00024



VRKP4YYYYY00025

Replacement equipment for Lexium P, Delta 3 robots

Designation	Description	For use with robot series	Reference	Weight kg/lb
Cable glands with covers and fasteners	1x cable gland M16 PVDF	VRKP2●●●WD	VRKP4YYYYY00016	0.790/ 1.74
	2x cable gland M50 PVDF	VRKP4●●●WD		
	1x counter nut M16	VRKP4●●●NO		
	1x sealing ring PE M16	VRKP4●●●CW		
	2x counter nut M50			
	2x sealing ring PE M50			
	1x sealing insert 4x13			
	1x sealing insert 7x9			
	1x lock bolt 13			
	4x lock bolt 9			
	1x media cover 50			
	1x media cover 5016			
	10x screw for media cover			
10x sealing washer for screw media cover				
Motor cover with fasteners, without sealing	1x cover	VRKP4●●●NF	VRKP4YYYYY00017	6.300/ 13.89
	4x screw-threaded rod	VRKP4●●●NO		
Media covers with fasteners, without sealing	2x media cover blank	VRKP2●●●WD	VRKP4YYYYY00018	0.850/ 1.87
	10x screw media cover	VRKP4●●●WD		
	10x sealing washer for screw media cover	VRKP4●●●CW		
		VRKP4●●●WF		
		VRKP4●●●NF		
Closing lid for the fourth axis	1x cover rotational axis	VRKP2●●●WD	VRKP4YYYYY00019	0.650/ 1.43
	1x O-ring central motor	VRKP4●●●WD		
	4x sealing washer central motor	VRKP4●●●CW		
	4x screw cover rotational axis	VRKP4●●●WF		
		VRKP4●●●NF		
Sealing set for maintenance of cover, motor cover and media lid	1x sealing gasket for maintenance cover	VRKP2●●●WD	VRKP4YYYYY00020	0.790/ 1.74
	1x sealing gasket for motor cover	VRKP4●●●WD		
	1x sealing gasket for media cover	VRKP4●●●NO		
		VRKP4●●●CW		
Seals for gearboxes	6x Quard ring main axis motor	VRKP2●●●WD	VRKP4YYYYY00021	0.790/ 1.74
	2x O-ring rotational axis motor	VRKP4●●●WD		
		VRKP4●●●CW		
		VRKP4●●●WF		
		VRKP4●●●NF		
Screw set for one upper arm (primary arm)	7x titanium screw for upper arm (primary arm)	P0, P1	VRKP1YYYYY00022	0.250/ 0.55
		P2, P4, P5, P6, P6 Extended	VRKP4YYYYY00022	0.790/ 1.74
Ball pins (set for one robot)	12x ball pins	Lexium P robots	VRKP4YYYYY00024	0.660/ 1.45
Ball sockets (set for one robot)	12x ball sockets	Lexium P robots	VRKP4YYYYY00025	0.790/ 1.74

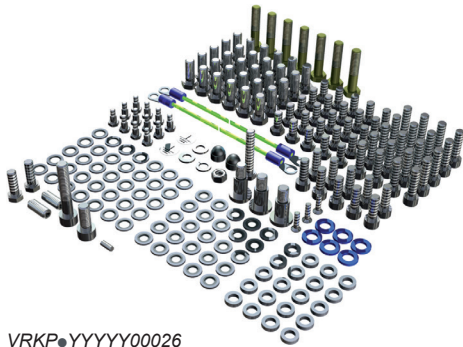
Lexium T, P

Delta robots for pick & place solutions

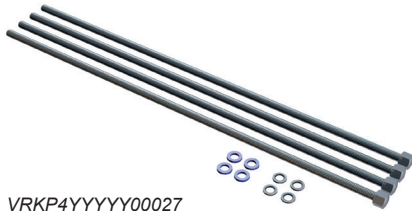
Lexium P, Delta 3 robots
Replacement equipment

Replacement equipment for Lexium P, Delta 3 robots

Designation	Description	For use with robot series	Reference	Weight kg/lb
Set of small parts	12x bolt lower arm	P0, P1	VRKP1YYYYY00026	–
	2x sticker lower arm 25x sealing washer for rotational motor/covering housing 35x sealing washer for maintenance cover / media cover/ motor cover 2x washer for PE connection 2x bolt for rotational motor motor 10x screw for rotational motor to gearbox / main motor to gearbox / universal joint small 7x titanium bolt for upper arm 1x straight pin universal joint 1x clamping screw universal joint 2x screw for universal joint large / clamping universal joint titan 3x countersunk head screw for universal joint 30x screw for gearbox to housing 25x bolt for rotational motor 2x indexing bold for gearbox 2x nut PE 1x spring ring PE 1x bolt PE 30x bolt for maintenance cover/ media cover / clamping 3x flat head screw for motor cover 6x captive washer for motor cover 2x PE cap for motor	P2, P4, P5, P6	VRKP4YYYYY00026	–
Fasteners for motor cover	4x threaded rod 4x sealing washer for threaded rod 4x lock washer	VRKP2●●●WD VRKP4●●●WD VRKP4●●●CW VRKP4●●●WF VRKP4●●●NF VRKP4●●●NO	VRKP4YYYYY00027	1.200/ 2.64
Fan with fastening clips	12x clamping clips 3x fan 80x25 24 V 6x wire ends	VRKP2●●●WD VRKP4●●●WD VRKP4●●●CW VRKP4●●●WF VRKP4●●●NF VRKP4●●●NO	VRKP4YYYYY00028	0.760/ 1.67
Titanium parallel plate with bearing and ball pins	1x titanium parallel plate with bearing and ball pins	Lexium P robots	VRKP4YYYYY00029	0.850/ 1.87
Protector caps	Set for one robot	P0, P1	VRKP1YYYYY00030	0.800/ 1.76
Set of single springs	Set for one robot: 6x spring 12x spring bracket 24x roll 24x screw	P0, P0 Extended, P1 P1 Extended, P2, P4, P5, P6	VRKP1YYYYY00032 VRKPXYYYYY00032	0.650/ 1.43



VRKP●YYYYY00026



VRKP4YYYYY00027



VRKP4YYYYY00028



VRKP4YYYYY00029



VRKP●YYYYY00032

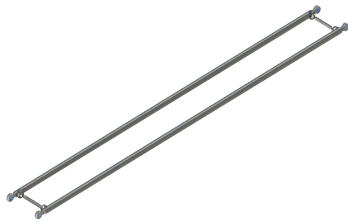
Lexium T, P Delta robots for pick & place solutions

Lexium P, Delta 3 robots

Replacement equipment



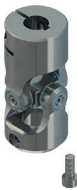
VRKP●YYYYY00033



VRKP●YYYYY00037



VRKPXYYYYY00040



VRKPXYYYYY00043



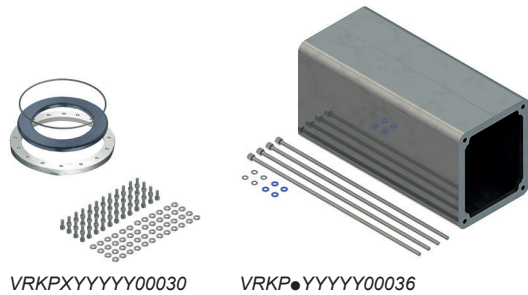
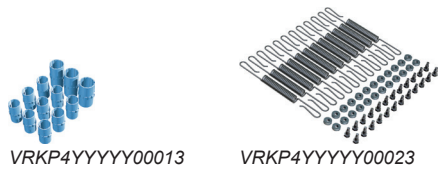
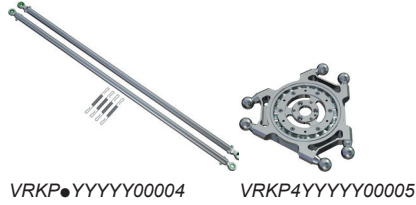
VRKP4YYYYY00044

Replacement equipment for Lexium P, Delta 3 robots						
Designation	Description	For use with robot series	Reference	Weight kg/lb		
Telescopic axis mounted with universal joints (Heavy Duty)	1x telescopic axis triple	P0	VRKP0YYYYY00033	1.550/3.42		
		P0 Extended	VRKP0YYYYY00E33			
		P1	VRKP1YYYYY00033			
		P1 Extended	VRKP1YYYYY00E33			
		P2	VRKP2YYYYY00033			
		P4	VRKP4YYYYY00033			
		P5	VRKP5YYYYY00033			
Impact Plates	3x impact Plate 12x screw for impact plate 48x sealing washer	P0, P1	VRKP1YYYYY00035	0.600/1.32		
		P2, P4, P5, P6	VRKPXYYYYY00035	0.700/1.54		
		Lower arm pair (secondary arms) with rolls	2x lower arm complete 2x single spring	P0	VRKP0YYYYY00037	1.000/2.21
				P0 Extended, P1	VRKP1YYYYY00037	
		P1 Extended, P2	VRKP2YYYYY00037			
		P4	VRKP4YYYYY00037			
		P5	VRKP5YYYYY00037			
		P6	VRKP6YYYYY00037			
Plain bearing for titanium universal joints of triple telescopic axis	10x plain bearing 10x screw 2x washer	Lexium P robots	VRKPXYYYYY00040	0.100/0.22		
Titanium upper universal joint with fasteners	1x upper universal joint titanium 1x clamping screw upper universal joint	Lexium P robots	VRKPXYYYYY00043	0.350/0.77		
Titanium lower universal joint with fasteners and indexing bolt	1x lower universal joint titanium 6x countersunk screw universal joint 2x straight pin universal joint	Lexium P robots	VRKPXYYYYY00044	0.350/0.77		

Lexium T, P

Delta robots for pick & place solutions

Lexium P, Delta 3 robots
Replacement equipment

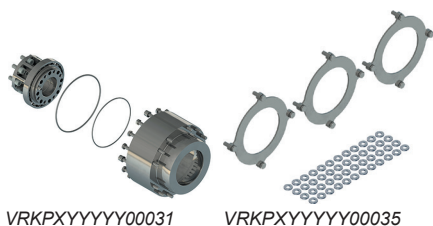


Replacement equipment for Lexium P, Delta 3 robots				
Designation	Description	For use with robot series	Reference	Weight kg/lb
Lower arms pair (secondary arms) with rolls, sockets, and springs	2x lower arm, complete 4x springs	P2	VRKP2YYYYY00004	1.750/
		P4	VRKP4YYYYY00004	3.858
		P5	VRKP5YYYYY00004	
		P6	VRKP6YYYYY00004	
		P6 Extended	VRKP6YYYYY00E04	
Stainless steel parallel plate with bearing and ball pins	1x parallel plate with bearing and ball pins	Lexium P robots	VRKP4YYYYY00005	0.960/ 2.11
Double telescopic axis with universal joints	1x double telescopic axis	P2	VRKP2YYYYY00007	1.950/
		P4	VRKP4YYYYY00007	4.299
		P5	VRKP5YYYYY00007	
		P6	VRKP6YYYYY00007	
		P6 Extended	VRKP6YYYYY00E07	
Plastic upper universal joint with fasteners	1x plastic upper universal joint 1x clamping screw for upper universal joint	Lexium P robots	VRKP4YYYYY00008	0.610/ 1.34
Plastic lower universal joint with fasteners and indexing bolt	1x plastic lower universal joint 6x countersunk screw for universal joint 1x straight pin for universal joint	Lexium P robots	VRKP4YYYYY00009	0.186/ 0.41
Food grade slide films	3x slide film 20 mm 9x slide film 16 mm	Lexium P robots	VRKP4YYYYY00013	0.560/ 1.23
Springs, rolls and fasteners (set for one robot)	12x springs 24x roll 24x screw	Lexium P robots	VRKP4YYYYY00023	–
Protector caps for main axis (set for one robot)	3x protector cap 3x support ring 3x O-ring for protector cap 48x screw for protector cap 48x sealing washer	P2, P4, P5, P6	VRKPXYYYYY00030	1.200/ 2.645
Motor cover extended with fasteners without sealing	1x motor cover extended 4x threaded rod 4x sealing washer 4x lock washer	VRKP2●●●WD VRKP4●●●WD VRKP4●●●CW VRKP4●●●WF VRKP4●●●NF VRKP4●●●NO	VRKPXYYYYY00036	6.300/ 13.889
Parrallel plate bearing protection	1x cover top side 1x flange offset ring 1x cover bottom side 6x collar nut 6x screw for cover bottom side 9x screw for flange offset ring 1x straight pin flange offset ring	Lexium P robots	VRKPXYYYYY00042	0.500/ 1.102
Maintenance cover connection	1x sealing gasket for maintenance cover 2x sealing gasket for media cover 1x maintenance cover connection pipe 2x media cover blank 24x sealing washer for maintenance cover and media cover 24x screw for maintenance cover and media cover	Lexium P robots	VRKPXYYYYY00048	3.380/ 7.451
Sealing set for the maintenance cover, motor cover, and media cover	7x sealing gasket maintenance cover and motor cover 1x sealing gasket media cover	VRKP4S0●WF VRKP5S0●WF VRKP6S0●WF	VRKPXYYYYY00051	0.200/ 0.440

Lexium T, P Delta robots for pick & place solutions

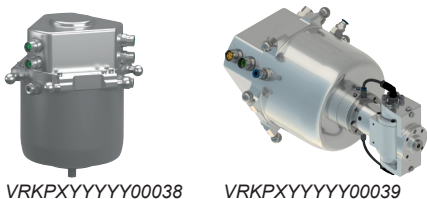
Lexium P, Delta 3 robots

Optional equipments, Cables



Optional equipments for Lexium P, Delta 3 robots					
Designation	Description	For use with robot series	Reference	Weight kg/lb	

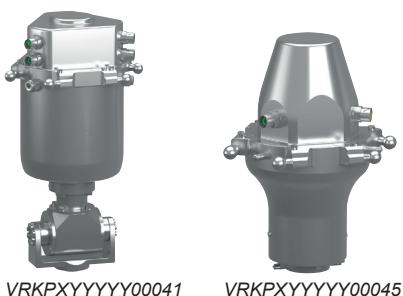
Gearbox leakage protection for main axis with fasteners	1x protection box for gearbox 1x output-flange-extension 8x screw for output-flange-extension 4x screw for protection box/gearbox 12x screw for protection box/housing	P2, P4, P5, P6	VRKPXXXXXX0031	4.400/ 9.700	
--	--	----------------	--------------------------------	-----------------	--



Impact plates for the main axis with fasteners (set for one robot)	3x impact plate 12x screw for impact plate 48x sealing washer	Lexium P robots	VRKPXXXXXX0035	–	
---	---	-----------------	--------------------------------	---	--

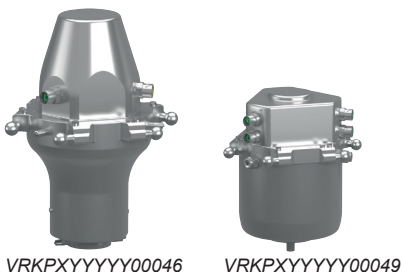
Double rotational module	1x double rotational module (1)	Lexium P robots	VRKPXXXXXX0038	4.000/ 8.818	
---------------------------------	---------------------------------	-----------------	--------------------------------	-----------------	--

Rotational tilting module	1x rotational tilting module (1)	Lexium P robots	VRKPXXXXXX0039	4.800/ 10.582	
----------------------------------	----------------------------------	-----------------	--------------------------------	------------------	--



Rotational tilting module HD	1x rotational tilting module for Heavy duty (1)	Lexium P robots	VRKPXXXXXX0041	5.400/ 11.904	
-------------------------------------	---	-----------------	--------------------------------	------------------	--

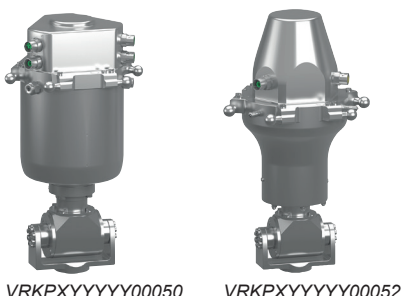
Rotational module B	1x rotational module with brake (1)	Lexium P robots	VRKPXXXXXX0045	3.500/ 7.716	
----------------------------	-------------------------------------	-----------------	--------------------------------	-----------------	--



Rotational module HT-B	1x rotational module High torque with brake (1)	Lexium P robots	VRKPXXXXXX0046	3.500/ 7.716	
-------------------------------	---	-----------------	--------------------------------	-----------------	--

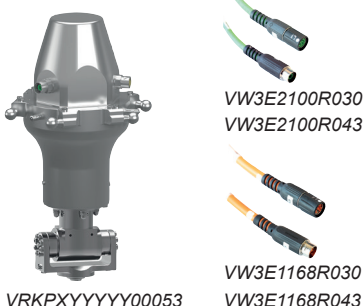
Double rotational module HD	1x double rotational module for Heavy duty (1)	Lexium P robots	VRKPXXXXXX0049	4.000/ 8.818	
------------------------------------	--	-----------------	--------------------------------	-----------------	--

Rotational tilting module HD-B	1x rotational tilting module for Heavy duty with brake (1)	Lexium P robots	VRKPXXXXXX0050	5.700/ 12.566	
---------------------------------------	--	-----------------	--------------------------------	------------------	--



Tilting module HT-B-HD	1x tilting module High torque for Heavy duty with brake	Lexium P robots	VRKPXXXXXX0052	5.700/ 12.566	
-------------------------------	---	-----------------	--------------------------------	------------------	--

Tilting module B	1x tilting module with brake	Lexium P robots	VRKPXXXXXX0053	4.300/ 9.479	
-------------------------	------------------------------	-----------------	--------------------------------	-----------------	--



Cables for optional equipments					
Designation	Description	Length m (ft)	For use with robot series	Reference	Weight kg/lb

Encoder extension cables	For cabling the rotational, double rotational modules and tilting modules	3 (9.842)	P0, P1, P2, P4	VW3E2100R030	0.475/ 1.047
---------------------------------	---	-----------	----------------	------------------------------	-----------------

		4.3 (14)	P5, P6	VW3E2100R043	–
--	--	----------	--------	------------------------------	---

Power extension cables	For cabling the rotational, double rotational modules and tilting modules	3 (9.842)	P0, P1, P2, P4	VW3E1168R030	0.590/ 1.300
-------------------------------	---	-----------	----------------	------------------------------	-----------------

		4.3 (14)	P5, P6	VW3E1168R043	–
--	--	----------	--------	------------------------------	---

(1) Max. load: 1.500 kg (3.3 lb). Degree of protection: IP54

I							
ILM0702P02F0000	22	VRKP4L0FWD00000	19	VRKP6S0RNC00000	21	VRKT3M1FNC00000	8
ILM0703P02F0000	22	VRKP4L0RNC00000	19	VRKP6S0RNC00E00	21		9
ILM1003P02F0000	9	VRKP4L0RNF00000	19	VRKP6S0RWF02000	21	VRKT3WMFNC00000	8
M		VRKP4L0RNO00000	19	VRKP6S0RWF02E00	21		9
MH30701P02F2200	22	VRKP4L0RWD00000	19	VRKP6WMFNC00000	21	VRKT3YYYYY00002	10
MH31002P02F2200	9	VRKP4S0FNC00000	19	VRKP6WMRNC00000	21	VRKT3YYYYY00004	10
MH31003P02F2200	9	VRKP4S0FWD00000	19	VRKP6YYYYY00002	22	VRKT3YYYYY00007	11
S		VRKP4S0FWF02000	19	VRKP6YYYYY00004	26	VRKT3YYYYY00008	11
SH30553P02F2000	22	VRKP4S0RNC00000	19	VRKP6YYYYY00007	26	VRKT5L0FNC00000	9
SH30702P02F2000	22	VRKP4S0RWD00000	19	VRKP6YYYYY00010	22	VRKT5M0FNC00000	9
SH30703P02F2000	22	VRKP4S0RWF02000	19	VRKP6YYYYY00033	25	VRKT5M1FNC00000	9
V		VRKP4S4RWD00000	19	VRKP6YYYYY00037	25	VRKT5WMFNC00000	9
VRKP0S0FNC00000	16	VRKP4WMFNC00000	19	VRKP6YYYYY00E04	26	VRKT5YYYYY00002	10
VRKP0S0FNC00E00	16	VRKP4WMRNC00000	19	VRKP6YYYYY00E07	26	VRKT5YYYYY00004	10
VRKP0S0FWF02000	16	VRKP4YYYYY00001	22	VRKP6YYYYY00E10	22	VRKT5YYYYY00007	11
VRKP0S0FWF02E00	16	VRKP4YYYYY00002	22	VRKP6YYYYY00E33	25	VRKT5YYYYY00008	11
VRKP0S0RNC00000	16	VRKP4YYYYY00004	26	VRKP6YYYYY00E37	25	VRKTXYYYYY00001	10
VRKP0S0RNC00E00	16	VRKP4YYYYY00005	26	VRKPXYYYYY00030	26	VRKTXYYYYY00003	10
VRKP0S0RWF02000	16	VRKP4YYYYY00006	22	VRKPXYYYYY00031	27	VRKTXYYYYY00005	10
VRKP0S0RWF02E00	16	VRKP4YYYYY00007	26	VRKPXYYYYY00032	24	VRKTXYYYYY00006	10
VRKP0YYYYY00002	22	VRKP4YYYYY00008	26	VRKPXYYYYY00035	25	VRKTXYYYYY00009	11
VRKP0YYYYY00010	22	VRKP4YYYYY00009	26	VRKPXYYYYY00036	26	VRKTXYYYYY00010	11
VRKP0YYYYY00033	25	VRKP4YYYYY00010	22	VRKPXYYYYY00038	27	VRKTXYYYYY00011	11
VRKP0YYYYY00037	25	VRKP4YYYYY00011	22	VRKPXYYYYY00039	27	VRKTXYYYYY00012	11
VRKP0YYYYY00E10	22	VRKP4YYYYY00012	22	VRKPXYYYYY00040	25	VW3E1168R030	27
VRKP0YYYYY00E33	25	VRKP4YYYYY00013	26	VRKPXYYYYY00041	27	VW3E1168R043	27
VRKP1S0FNC00000	17	VRKP4YYYYY00014	22	VRKPXYYYYY00042	26	VW3E2100R030	27
VRKP1S0FNC00E00	17	VRKP4YYYYY00015	22	VRKPXYYYYY00044	25	VW3E2100R043	27
VRKP1S0FWF02000	17	VRKP4YYYYY00016	23	VRKPXYYYYY00045	27		
VRKP1S0FWF02E00	17	VRKP4YYYYY00017	23	VRKPXYYYYY00046	27		
VRKP1S0RNC00000	17	VRKP4YYYYY00018	23	VRKPXYYYYY00048	26		
VRKP1S0RNC00E00	17	VRKP4YYYYY00019	23	VRKPXYYYYY00049	27		
VRKP1S0RWF02000	17	VRKP4YYYYY00020	23	VRKPXYYYYY00050	27		
VRKP1S0RWF02E00	17	VRKP4YYYYY00021	23	VRKPXYYYYY00051	26		
VRKP1YYYYY00002	22	VRKP4YYYYY00022	23	VRKPXYYYYY00052	27		
VRKP1YYYYY00003	22	VRKP4YYYYY00023	26	VRKPXYYYYY00053	27		
VRKP1YYYYY00010	22	VRKP4YYYYY00024	23	VRKT1M0FNC00000	8		
VRKP1YYYYY00022	23	VRKP4YYYYY00025	23		9		
VRKP1YYYYY00026	24	VRKP4YYYYY00026	24	VRKT1YYYYY00002	10		
VRKP1YYYYY00030	24	VRKP4YYYYY00027	24	VRKT1YYYYY00003	10		
VRKP1YYYYY00032	24	VRKP4YYYYY00028	24	VRKT1YYYYY00004	10		
VRKP1YYYYY00033	25	VRKP4YYYYY00029	24	VRKT1YYYYY00005	10		
VRKP1YYYYY00035	25	VRKP4YYYYY00033	25	VRKT1YYYYY00007	11		
VRKP1YYYYY00037	25	VRKP4YYYYY00037	25	VRKT1YYYYY00008	11		
VRKP1YYYYY00E10	22	VRKP4YYYYY01003	22	VRKT1YYYYY00009	11		
VRKP1YYYYY00E33	25	VRKP5L0FNC00000	20	VRKT1YYYYY00011	11		
VRKP2L0FNC00000	18	VRKP5L0RNC00000	20	VRKT1YYYYY00030	10		
VRKP2L0RNC00000	18	VRKP5S0FNC00000	20	VRKT2L0FNC00000	8		
VRKP2S0FNC00000	18	VRKP5S0FWF02000	20		9		
VRKP2S0FWD00000	18	VRKP5S0RNC00000	20	VRKT2M0FNC00000	8		
VRKP2S0RNC00000	18	VRKP5S0RWF02000	20		9		
VRKP2S0RWD00000	18	VRKP5YYYYY00002	22	VRKT2M1FNC00000	8		
VRKP2WMFNC00000	18	VRKP5YYYYY00004	26		9		
VRKP2WMRNC00000	18	VRKP5YYYYY00007	26	VRKT2WMFNC00000	8		
VRKP2YYYYY00002	22	VRKP5YYYYY00010	22		9		
VRKP2YYYYY00004	26	VRKP5YYYYY00033	25	VRKT2YYYYY00002	10		
VRKP2YYYYY00007	26	VRKP5YYYYY00037	25	VRKT2YYYYY00004	10		
VRKP2YYYYY00010	22	VRKP6L0FNC00000	21	VRKT2YYYYY00007	11		
VRKP2YYYYY00033	25	VRKP6L0RNC00000	21	VRKT2YYYYY00008	11		
VRKP2YYYYY00037	25	VRKP6L0RNC00E00	21	VRKT3L0FNC00000	8		
VRKP4L0FNC00000	19	VRKP6S0FNC00000	21		9		
VRKP4L0FNF00000	19	VRKP6S0FNC00E00	21	VRKT3M0FNC00000	8		
VRKP4L0FNO00000	19	VRKP6S0FWF02000	21		9		
		VRKP6S0FWF02E00	21				



Connect to other users and experts

Welcome to Schneider Electric community

Schneider Electric support forum for Motion Control solutions from design, implementation to troubleshooting and more, including:

- Multicarrier systems
- Robotics
- Integrated Drives
- Servo Drives and Motors
- Stepper Drives and Motors
- Motion Controllers
- Programmable Logic Controllers
- Safety PLC Controllers
- Input/Output (I/O) modules
- Engineering software

[Access the community forum](#)

Life Is On

Schneider
Electric



Advantage Service Plan for Robotics

Keep the movement on

Keep your Lexium Robots, Cobots, MC12 Multi Carrier, SCARA, and associated controllers running smoothly and efficiently with a service contract. Maintain productivity by reducing unexpected downtime. Get peace of mind from knowing that you have access to experienced service technicians and spare parts when and where you need them.



Key benefits

- Reduce costs by identifying and correcting potential issues before they cause unplanned downtime.
- Access to experts helps you maintain production, reduce downtime and get the most out of your robotic systems.
- Minimize unplanned downtime with ready access to wear and spare parts.
- Extend asset life with properly maintained robotics.

se.com/services

Life Is On

Schneider
Electric



Advantage Service Plan for Robotics

Key features

Preventive maintenance visit

Periodic maintenance, based on the operations performed by the robot, is essential to prevent unplanned downtime and extend asset life. During the included preventive maintenance visit, our service representatives perform a routine check-up, and all the maintenance activities needed, based on the number of operations or operating time performed.

Remote technical support

Your Advantage Service Plan provides you with access to our advanced technical support team, who can answer your robotics questions and troubleshoot a problem via phone or email during normal business hours.

On site corrective maintenance service

In the event of an incident that results in unplanned downtime for your robot that cannot be resolved remotely, our service representatives can respond on site for diagnostic and corrective maintenance activities. Programming and commissioning are not included in this service.

Preferred rate for parts

For simplified ordering, we offer parts needed for the upkeep of your robots. These parts are offered at preferential rates for our contract customers.

Extended warranty (optional service)

When ordered with the contract, you can extend the warranty for one year beyond the standard warranty.

Support coverage

Support is available for the following ranges of Schneider Electric™ robots:

- Lexium Delta P
- Lexium Delta T
- Lexium Cobots
- Lexium MC12 Multi Carrier
- Lexium SCARA

Service Plans (Available with TWO tiers)

Advantage Service Plan for Robotics	Duration	Essential	Advanced
Remote technical support (8X5) - Premium	1 year	Yes	Yes
Access to MySchneider portal - Premium	1 year	Yes	Yes
Preventive Maintenance visit	1 year		Yes
Preferred rate for parts	1 year		Yes
Onsite corrective Maintenance	1 year		Yes
Optional Service			
Extended warranty - 1 year	1 year		

For more information, please contact your Schneider Electric Representative.

se.com/services

Life Is On

Schneider
Electric

mySchneider, your personalized digital experience

Access an all-in-one customized online experience and benefit from tailored business services, resources, and tools to efficiently support your business operations.

- **Efficiency:** In just a few clicks, find all the information and support you need to get the job done.
- **Simplicity:** Use a single login to access all business services, in one place, available 24/7. You no longer need to log in to multiple platforms.
- **Personalization:** Benefit from content, tools, and business services tailored to your activity, and customize your landing page based on your preferences.

Watch the How-to Videos



Order management

- > [Select Products and Add to Cart](#)
- > [Check for Products' Price and Availability](#)
- > [Order Products with Generic Commercial References](#)



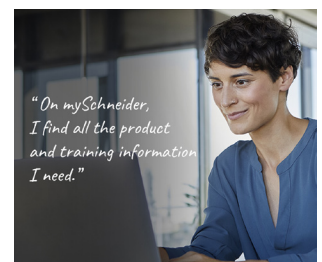
Product information

- > [Find a Product Data Sheet and Related Documents](#)
- > [Select Products and Add to Cart](#)
- > [Stay Up to Date on the Status of My Products](#)



Support

- > [Get Quicker Answers Thanks to Online Support](#)



Training

- > [Access Trainings Dedicated to My Activity](#)

[Create your account](#)

Life Is 

Schneider
Electric

Legal information

The information provided in this Catalog contains description of Schneider Electric products, solutions and services ("Offer") with technical specifications and technical characteristics of the performance of the corresponding Offer.

The content of this document is subject to revision at any time without notice due to continued progress in methodology, design and manufacturing.

To the extent permitted by applicable law, no responsibility or liability is assumed by Schneider Electric and its subsidiaries for any type of damages arising out of or in connection with (i) informational content of this Catalog not conforming with or exceeding the technical specifications, or (ii) any error contained in this Catalog, or (iii) any use, decision, act or omission made or taken on basis of or in reliance on any information contained or referred to in this Catalog.

SCHNEIDER ELECTRIC MAKES NO WARRANTY OR REPRESENTATION OF ANY KIND, WHETHER EXPRESS OR IMPLIED, AS TO WHETHER THIS CATALOG OR ANY INFORMATION CONTAINED THEREIN SUCH AS PRODUCTS AND SERVICES WILL MEET REQUIREMENTS, EXPECTATIONS OR PURPOSE OF ANY PERSON MAKING USE THEREOF.

Schneider Electric brand and any trademarks of Schneider Electric and its subsidiaries referred to in this Catalog are property of Schneider Electric or its subsidiaries. All other brands are trademarks of their respective owners.

This Catalog and its content are protected under applicable copyright laws and provided for informative use only. No part of this Catalog may be reproduced or transmitted in any form or by any means (electronic, mechanical, photocopying, recording, or otherwise), for any purpose, without the prior written permission of Schneider Electric.

Copyright, intellectual, and all other proprietary rights in the content of this Catalog (including but not limited to software, audio, video, text, and photographs) rests with Schneider Electric or its licensors. All rights in such content not expressly granted herein are reserved. No rights of any kind are licensed or assigned or shall otherwise pass to persons accessing this information.

Life Is On



Learn more about our products at
www.se.com

The information provided in this documentation contains general descriptions and/or technical characteristics of the performance of the products contained herein. This documentation is not intended as a substitute for and is not to be used for determining suitability or reliability of these products for specific user applications. It is the duty of any such user or integrator to perform the appropriate and complete risk analysis, evaluation and testing of the products with respect to the relevant specific application or use thereof. Neither Schneider Electric nor any of its affiliates or subsidiaries shall be responsible or liable for misuse of the information contained herein.

Design: Schneider Electric
Photos: Schneider Electric

Schneider Electric Industries SAS

Head Office
35, rue Joseph Monier - CS 30323
F-92500 Rueil-Malmaison Cedex
France

DIA3ED2160307EN
August 2025 - V6.0