

SoMove Setup software

for motor control devices

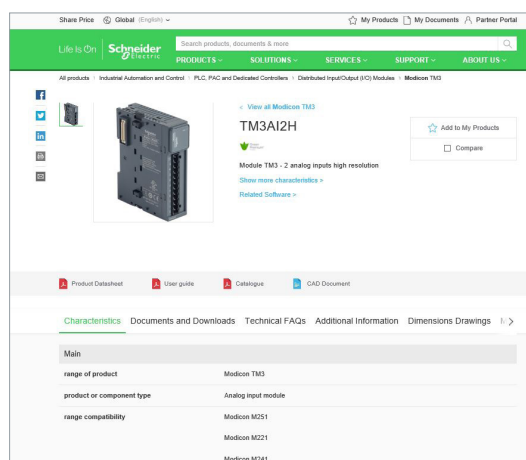
Quick access to product information

Get technical information about your product

References

Modicon TM3
I/O expansion modules for Modicon controllers
Analog I/O modules

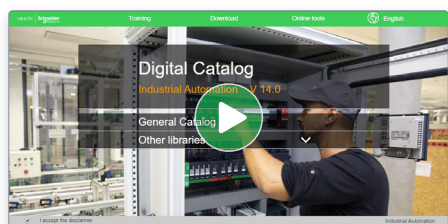
References	Modicon TM3 analog input modules	number and type of channels	Output range	Resolution	Input terminal block (V)	Reference	Weight (kg)
TM3AI1	2 voltage/current inputs	-10...+10 VDC 0...+10 VDC 0...20 mA A, 20 mA	10 000 cr	0.001%	TM3AI1	0.150	
			10 000 cr	0.002%	TM3AI1P	0.150	
TM3AI2	4 voltage/current inputs	-10...+10 VDC 0...+10 VDC 0...20 mA A, 20 mA	12 000 cr	0.001%	TM3AI2	0.200	
			11 000 cr	0.002%	TM3AI2P	0.200	
TM3AI3	4 voltage/current inputs	-10...+10 VDC 0...+10 VDC 0...20 mA A, 20 mA	10 000 cr	0.001%	TM3AI3	0.150	
			10 000 cr	0.002%	TM3AI3P	0.150	
TM3AI4	4 temperature inputs (I, II, K, R, S, T, N, E, C) - Semiconductor probes (PT100, RTD, Ni100, Ni200) - J, K, R, S, T, N, E, C - I, II, K, R, S, T, N, E, C	-10...+10 VDC 0...+10 VDC 0...20 mA A, 20 mA	10 000 cr	0.001%	TM3AI4	0.200	
			10 000 cr	0.002%	TM3AI4P	0.200	
TM3AI5	4 differential temperature inputs (I, II, K, R, S, T, N, E, C) - Semiconductor probes (PT100, RTD, Ni100, Ni200) - J, K, R, S, T, N, E, C - I, II, K, R, S, T, N, E, C	-10...+10 VDC 0...+10 VDC 0...20 mA A, 20 mA	10 000 cr	0.001%	TM3AI5	0.200	
			10 000 cr	0.002%	TM3AI5P	0.200	
TM3AI6	4 unbuffered current inputs	-10...+10 VDC	12 000 cr	0.001%	TM3AI6	0.150	
			12 000 cr	0.002%	TM3AI6P	0.150	



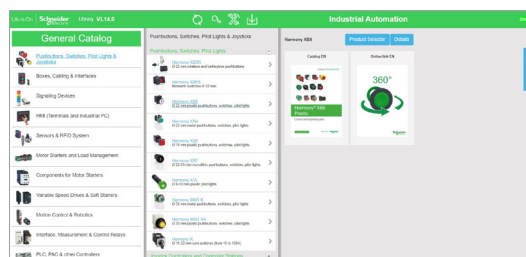
Each commercial reference presented in a catalog contains a hyperlink. Click on it to obtain the technical information of the product:

- Characteristics, Dimensions and drawings, Mounting and clearance, Connections and schemas, Performance curves
- Product image, Instruction sheet, User guide, Product certifications, End of life manual

Find your catalog



- > With just 3 clicks, you can access the Industrial Automation and Control catalogs, in both English and French
- > Consult digital automation catalogs at [Digi-Cat Online](#)

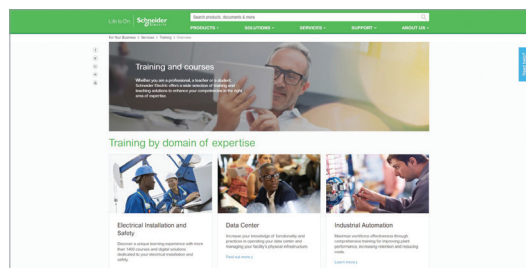


- Up-to-date catalogs
- Embedded product selectors, 360° pictures
- Optimized search by commercial references

Select your training



- > Find the right [Training](#) for your needs on our Global website
- > Locate the training center with the selector tool, using this [link](#)



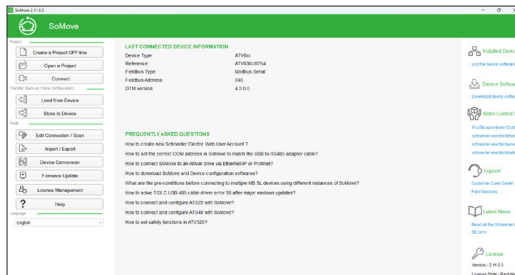
Life Is On

Schneider
Electric

General contents

SoMove Setup software for motor control devices

■ Presentation.....	<i>page 2</i>
■ Functions.....	<i>page 2</i>
■ References.....	<i>page 4</i>
■ Compatibility.....	<i>page 5</i>
■ Product reference index.....	<i>page 6</i>



SoMove start page

Presentation

SoMove is a PC-based commissioning and configuration software used for drives, soft starters, and motor control devices:

- Altivar ATV600, ATV900 process drives, Bricks (Supply unit, Braking unit option, Active Front End) for services, Altivar ATV6000
- Altivar ATV320, ATV340 machine drives
- Altivar ATH600, ATH200 HVAC drives
- Altivar ATS480, ATS490, ATS430 soft starters
- TeSys U starter-controllers
- TeSys T and TeSys island motor management system
- Lexium18 Pro, Lexium 32A, Lexium 32M, Lexium 16D, Lexium 28A, Lexium 28E, Lexium 26 servo drives
- Lexium 32i integrated servo drives

SoMove software is used for the full lifecycle of a drive or motor-control device:

- Configuring
- Commissioning
- Monitoring
- Diagnostics
- Troubleshooting
- Maintenance

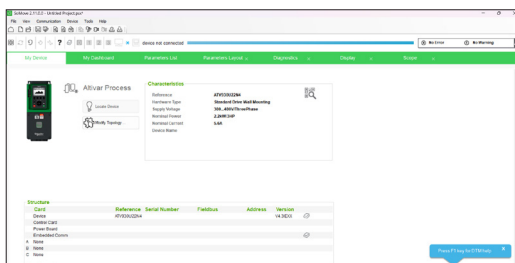
SoMove software connects to Schneider Electric products via protocols such as, Modbus serial, Modbus TCP IPv6, and CANopen.

To facilitate setup and maintenance, SoMove software can use a direct USB/RJ45 cable (Modbus serial) link.

SoMove software is compatible with the Multi-Loader configuration tool.

This tool can save a significant amount of time when loading, duplicating or editing configurations on a device.

SoMove software and the Device Type Managers (DTMs) associated with the devices can be downloaded from our website www.schneider-electric.com.



Example of connecting SoMove software to a device

Functions

Configuration preparation in disconnected mode

SoMove software has a genuine disconnected mode which provides access to the device parameters. This mode can be used to generate the device configuration. The configuration can be saved, printed and exported to office automation software.

SoMove software also checks the consistency of the parameters, validating the configurations created in disconnected mode.

A large number of functions are available in disconnected mode, in particular:

- The device configuration software wizard
- The configuration comparison function
- Saving, copying, printing and creating configuration files for export Microsoft Excel® tool, and sending configurations by e-mail.

Setup

When the PC is connected directly to the device or to the communication bus (1), SoMove software can be used for:

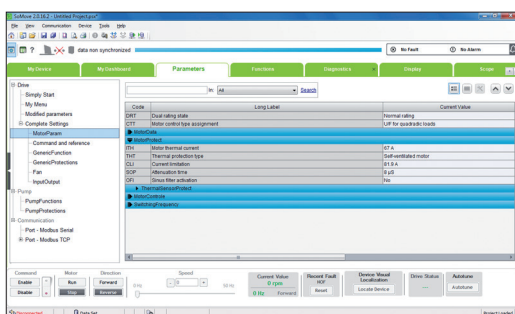
- Transferring the generated configuration onto the device
- Adjustment and monitoring, which includes such functions as:
 - The oscilloscope
 - Display of communication parameters
- Easy control via the control panel user interface
- Saving the final configuration

Maintenance

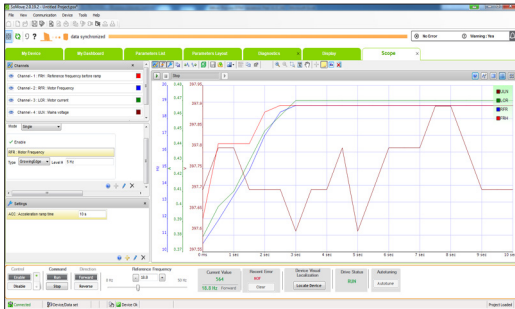
In order to simplify maintenance operations, SoMove software can be used to:

- Compare the configuration of a device currently being used with a configuration saved on the PC
- Transfer a configuration to a device
- Compare oscilloscope curves
- Save oscilloscope curves and detected faults

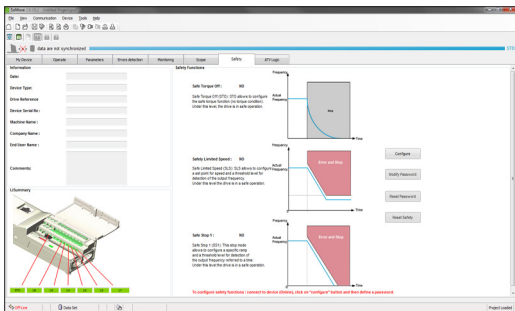
(1) Requires a specific connection accessory. For further information, please consult our Customer Care Centre.



SoMove control panel



Oscilloscope function



Safety function

Functions (continued)

Tabs

SoMove software provides fast, direct access to information on the device via five tabs:

- **My Device:** Displays the device information (type, reference, software versions, option cards, etc.)
- **Parameters:** Displays the device adjustment parameters, shown in a table or in the form of diagrams
- **Faults:** Displays a list of the faults that may be detected with the device, the fault log and any current detected faults or alarms
- **Monitoring:** Provides a realtime display of the device status, its I/O and the monitoring parameters
- **Oscilloscope:** Provides a high-speed oscilloscope (for recording traces in the device) or low-speed oscilloscope (for recording traces in the software for devices that do not have an integrated oscilloscope)

SoMove's user interface automatically adapts to the specific configured device by offering additional tabs:

- **Safety:** For configuring the Safety functions on Altivar 32 variable speed drives and Lexium 32 servo drives. It can also be used to:
 - Display the I/O
 - Compile and print a report
- **ATVLogic:** For accessing the Altivar 32 drive's programmable function blocks. It can also be used to:
 - Develop a program and transfer it to the drive
 - Display and debug the program already on the drive
- **Auto-tuning:** For accessing the servo control settings for the three different operating modes of the Lexium 32 servo drive's auto-tuning function. These three modes are:
 - Automatic mode for quick setup, designed for simple applications
 - Semi-automatic mode for quick setup, with the option of optimizing the servo drive/servo motor combination (access to the mechanical and dynamic behaviour parameters)
 - Expert mode for optimizing the adjustment parameters, designed for complex applications

Additional tabs for Altivar Process variable speed drives:

- **My Dashboard:** Displays the adjustment and display variables, in a configurable dashboard, in order to adapt to the client application
- **Functions:** Displays a preview of the device adjustment parameters
- **Diagnostics:** Displays the list of errors and alarms that have occurred on the device
- **Pump Applications:** Provides access to special pump functions:
 - Setting the characteristic pump curves, and displaying the operating point in real time
 - Configuring the pump monitoring parameters

Connections

Modbus serial link

The USB/RJ45 cable connects to the USB port of the PC running SoMove software and to the RJ45 port on the device.



SoMove setup software

References

Description	Reference	Weight kg/lb
SoMove setup software Includes: <ul style="list-style-type: none"> <input type="checkbox"/> SoMove setup software for PC in English, French, German, Italian, Spanish and Chinese 	SoMove software and the DTMs associated with the devices can be downloaded from our website www.schneider-electric.com .	
USB/RJ45 cable <ul style="list-style-type: none"> <input type="checkbox"/> Used to connect a PC to the device. <input type="checkbox"/> This cable is 2.5 m/8.20 ft long and has a USB connector (PC end) and an RJ45 connector (device end). 	TCSMCNAM3M002P	–
RJ45/RJ45 cable <ul style="list-style-type: none"> <input type="checkbox"/> Used to connect a PC or an Ethernet router to the device. <input type="checkbox"/> This cable is 2 m/6.56 ft long and has two type A RJ45 connectors (PC end and device end). 	490NTW00002	–

Compatibility of SoMove software with specific devices

Device	Range	Version of software on the device
Variable speed drive	Altivar Process Drives ATV600, ATV900, Bricks (Supply unit, Braking unit option, Active Front End) for services, ATV6000	≥ 1.0
	Altivar Machine Drives ATV320, ATV340	
	Altivar HVAC Drives ATH600, ATH200	
Soft starter	ATS480, ATS490, ATS430	
Servo Drives	Lexium 18 Pro	
	Lexium 32A, Lexium 32M, Lexium 32i, Lexium 16D, Lexium 28A, Lexium 28E, Lexium 26	
Starter Controller	TeSys U	
Motor Management system	Tesys T, Tesys Island	

Compatibility of SoMove software with systems and required configuration

Supported operating systems

This software can be installed on the following operating systems:

- Microsoft Windows® 10 32/64-bit (OS Builds minimum version: 18362.535 and 18363.535 or higher.)
- Microsoft Windows® 11 64-bit

Minimum PC Requirements

Equipment	Minimum
Processor	Pentium 4 / Core 2 Duo, 2 GHz
RAM	4 GB
Free Hard Disk Space	1 GB
Display	Resolution: 1024 x 768 pixels with 32-bit colours. DPI: 96 (100%).

Recommended PC Requirements

Equipment	Recommended
Processor	Intel® Core™ i3
RAM	4 GB
Free Hard Disk Space	2 GB
Display	Resolution: 1920 x 1080 pixels with 32-bit colours. DPI: 96 (100%).

Supported Resolution

The supported screen resolutions are:

- Supported Resolutions: 1024 x 768, 1366 x 768, 1600 x 900 and 1920 x 1080
- Supported DPI: 96dpi (100%), 120dpi (125%)

Recommended VM Requirements

Virtual Machine	Recommended Requirements
Operating Systems	Windows 10 (32 and 64 bit), Windows 11 (64 bit)
RAM	2 GB
Free Hard Disk Space	4 GB
USB Controller Compatibility	USB 2.0 and above
Virtual Machine Workstation Version	11.0 and above
Virtual Machine Workstation Player	14 and above

#	
490NTW00002	4
T	
TCSMCNAM3M002P	4

mySchneider, your personalized digital experience

Access an all-in-one customized online experience and benefit from tailored business services, resources, and tools to efficiently support your business operations.

- **Efficiency:** In just a few clicks, find all the information and support you need to get the job done.
- **Simplicity:** Use a single login to access all business services, in one place, available 24/7. You no longer need to log in to multiple platforms.
- **Personalization:** Benefit from content, tools, and business services tailored to your activity, and customize your landing page based on your preferences.

Watch the How-to Videos



Order management

- > [Select Products and Add to Cart](#)
- > [Check for Products' Price and Availability](#)
- > [Order Products with Generic Commercial References](#)



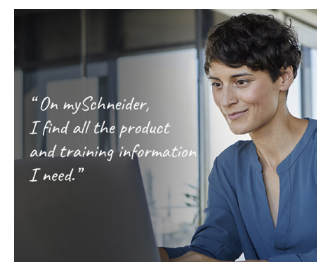
Product information

- > [Find a Product Data Sheet and Related Documents](#)
- > [Select Products and Add to Cart](#)
- > [Stay Up to Date on the Status of My Products](#)



Support

- > [Get Quicker Answers Thanks to Online Support](#)



Training

- > [Access Trainings Dedicated to My Activity](#)

[Create your account](#)

Life Is 

Schneider
Electric

Legal information

The information provided in this Catalog contains description of Schneider Electric products, solutions and services ("Offer") with technical specifications and technical characteristics of the performance of the corresponding Offer.

The content of this document is subject to revision at any time without notice due to continued progress in methodology, design and manufacturing.

To the extent permitted by applicable law, no responsibility or liability is assumed by Schneider Electric and its subsidiaries for any type of damages arising out of or in connection with (i) informational content of this Catalog not conforming with or exceeding the technical specifications, or (ii) any error contained in this Catalog, or (iii) any use, decision, act or omission made or taken on basis of or in reliance on any information contained or referred to in this Catalog.

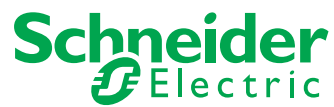
SCHNEIDER ELECTRIC MAKES NO WARRANTY OR REPRESENTATION OF ANY KIND, WHETHER EXPRESS OR IMPLIED, AS TO WHETHER THIS CATALOG OR ANY INFORMATION CONTAINED THEREIN SUCH AS PRODUCTS AND SERVICES WILL MEET REQUIREMENTS, EXPECTATIONS OR PURPOSE OF ANY PERSON MAKING USE THEREOF.

Schneider Electric brand and any trademarks of Schneider Electric and its subsidiaries referred to in this Catalog are property of Schneider Electric or its subsidiaries. All other brands are trademarks of their respective owners.

This Catalog and its content are protected under applicable copyright laws and provided for informative use only. No part of this Catalog may be reproduced or transmitted in any form or by any means (electronic, mechanical, photocopying, recording, or otherwise), for any purpose, without the prior written permission of Schneider Electric.

Copyright, intellectual, and all other proprietary rights in the content of this Catalog (including but not limited to software, audio, video, text, and photographs) rests with Schneider Electric or its licensors. All rights in such content not expressly granted herein are reserved. No rights of any kind are licensed or assigned or shall otherwise pass to persons accessing this information.

Life Is On



Learn more about our products at
www.se.com

Design: Schneider Electric
Photos: Schneider Electric

Schneider Electric Industries SAS

Head Office
35, rue Joseph Monier - CS 30323
F-92500 Rueil-Malmaison Cedex
France

DIA2ED2140801EN
April 2026 - V4.0