

# Lead your costs management

Motor Control & Protection



TeSys U



Schneider Electric Industries SAS

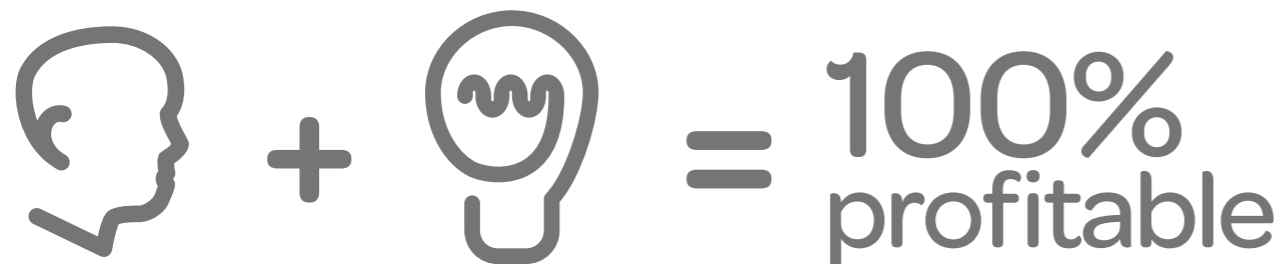
**Head Office**

89, bd Franklin Roosevelt  
92506 Rueil-Malmaison Cedex  
France

[www.schneider-electric.com](http://www.schneider-electric.com)

Owing to changes in standards and equipment, the characteristics given in the text and images in this document are not binding until they have been confirmed with us.

Print: Schneider Electric  
Design: Manitoba  
Photos: Schneider Electric



Protection and  
control requirements

TeSys innovation

Schneider Electric puts reliability at the heart of its strategy of innovation and with TeSys, offers a wide range of solutions for protection and power control that covers all your needs, from basic to advanced



TeSys U clearly demonstrates Schneider Electric's determination to assist panel builders with their essential requirements for profitability and their needs for speedy installation.

#### **Meeting deadlines and Flexibility**

With TeSys U, 95% of the motor starter's installation and wiring can be completed without knowing the size of the motor. Panels are prepared and can then be quickly finalised.

Having chosen to use TeSys U in panels, it becomes very easy to adapt to unexpected changes in configuration during the building phase.

#### **Speed and performance**

With TeSys U, faster wiring and installation times and the elimination of assembly error risks translate into immediately measurable benefits in terms of productivity.

The compact size and low heat dissipation of TeSys U make it the ideal solution for all types of panel.

#### **Open approach and Integration**

TeSys U has evolved and changed into an automation tool with an open approach, capable of communicating with the main industrial protocols. It integrates perfectly into iMCC type intelligent panels.

#### **Differentiation and modern design**

The innovative design of TeSys U allows you to differentiate your panels in terms of aesthetic appearance. When you choose TeSys U, you can stand out from the crowd by offering your customers latest generation panels.

# Ensure that deadlines are met

## > Speed and flexibility

### With TeSys U, save time

Start building your panel in advance, thanks to the delayed personalisation capability, and reduce assembly and wiring time as well as marking.

A simplified motor starter solution:  
3 functions in 1 device,  
the number of part numbers is divided by 4.

Only 6 part numbers  
are needed to build motor  
starters up to 15 kW.



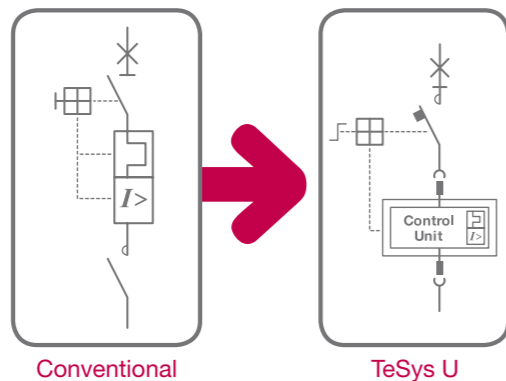
### 95% of motor starter wiring and installation

can be performed,  
even though  
the project design  
has not yet been  
completed

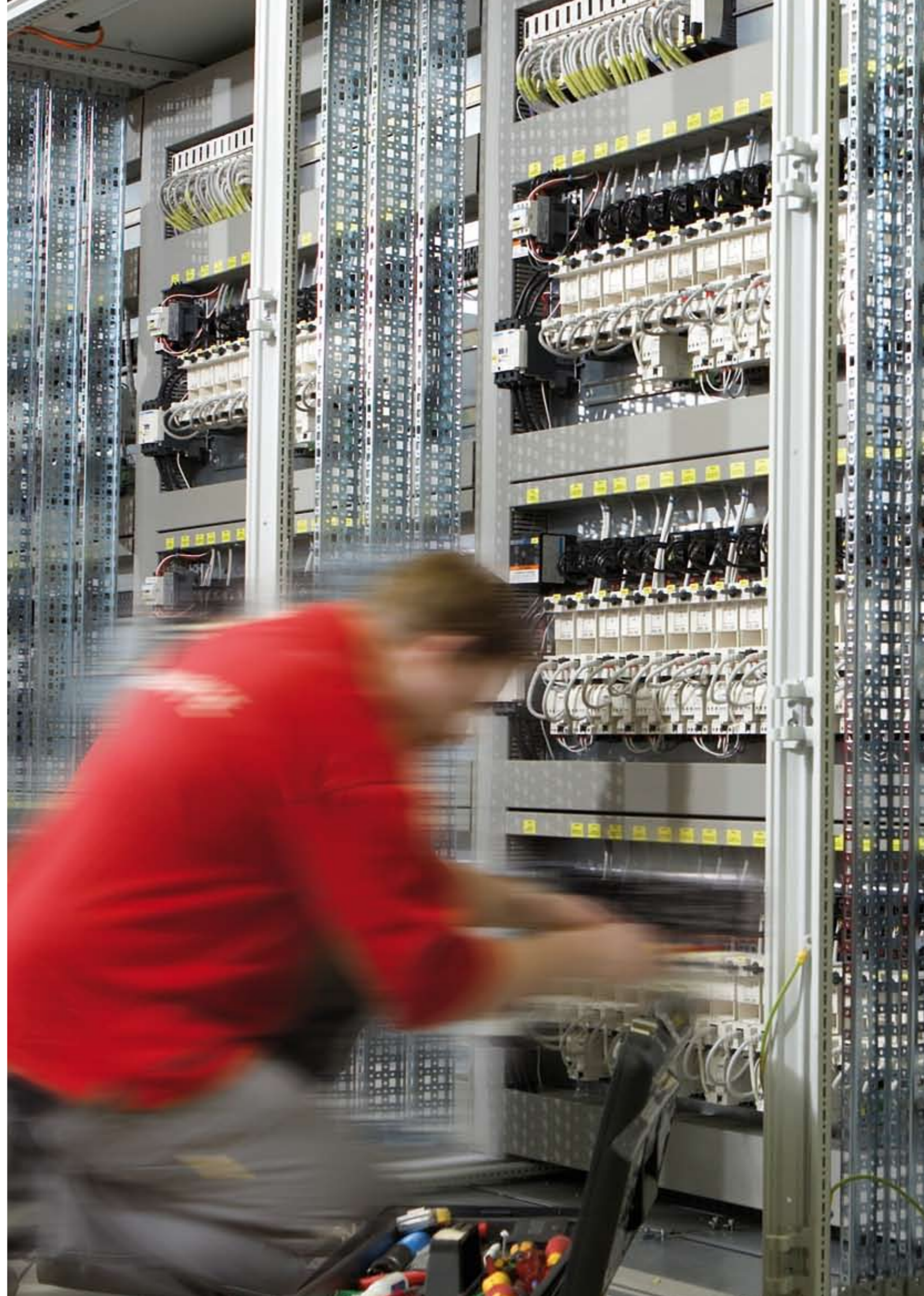
### Up to 45% reduction in marking and wiring time

Productivity benefits  
are immediate and  
visible, right from  
the first application

And reduce heat  
dissipation and  
consumption  
of power used  
to regulate the  
temperature inside  
panels.



### Up to 75% reduction in heat dissipation



# Build intelligent panels

## > Integration and open approach

### Simplified installation and real reduction in space requirements

TeSys U is a compact solution that takes up less space than conventional motor starters.

Great installation flexibility without any need for derating allows improved optimisation of available space.

### Speak your customers' favourite language

To make your life easier, TeSys U chooses the open approach: a single motor starter solution that will communicate, whatever the protocol used by your customer.

### Save time when programming

By using DFBs (Derived Function Blocks) you can structure your PLC programmes and optimise programming times. They also enable you to have more simplified view of the motor starter connected to all field buses supported by TeSys U.

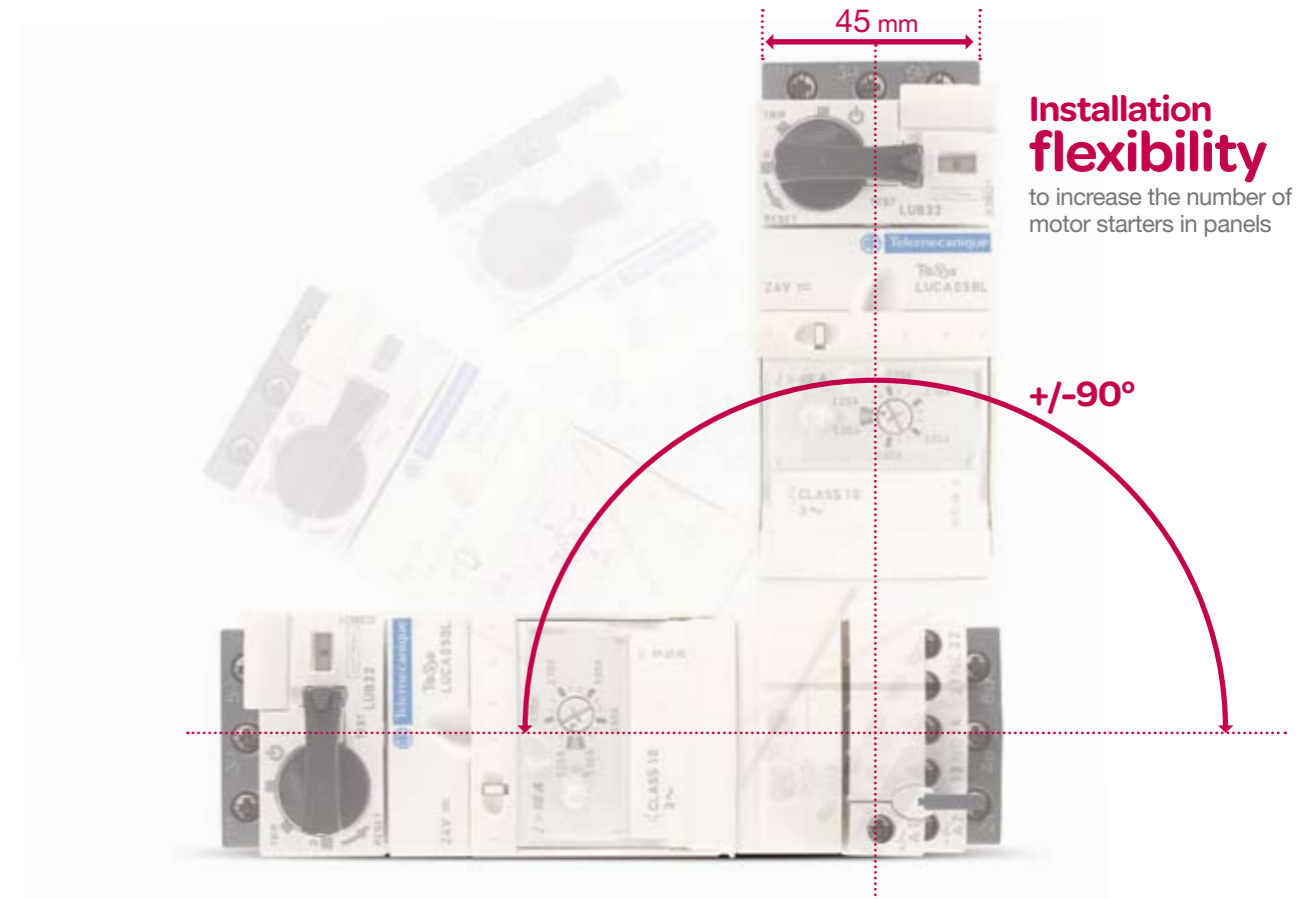


The multifunction control unit, designed to provide high level protection and monitoring functions, is also a valuable, plug-in diagnostic tool for temporary commissioning or on-site maintenance work.

**+40% space saving**  
compared with traditional starters

**5 certified field buses**  
supported for integration into network architectures (CiA, PNO and ODVA)

**+100% installation flexibility**  
to increase the number of motor starters in panels



**Installation flexibility**  
to increase the number of motor starters in panels