

Lead your profitability

Motor Control & Protection



TeSys U



Schneider Electric Industries SAS

Head Office

89, bd Franklin Roosevelt
92506 Rueil-Malmaison Cedex
France

www.schneider-electric.com

Owing to changes in standards and equipment, the characteristics given in the text and images in this document are not binding until they have been confirmed with us.

Print: Schneider Electric
Design: Manitoba
Photos: Schneider Electric



Leader in the motor starter market, Schneider Electric puts motor protection at the heart of its innovation strategy and, with TeSys U, offers an open and simple solution for the management and protection of all your motor installations

TeSys U, incorporated in MotorSys intelligent panels, clearly demonstrates Schneider Electric's determination to work with you to constantly improve your productivity and minimise your process downtime.

With its TeSys U and TeSys T ranges, Schneider Electric covers all motor control and protection needs in industrial installations, where machine availability is a vital requirement.

An open approach to the main industrial protocols and the assurance of being able to count on continuity of service mean that TeSys U is a high-performance and profitable solution, specified by the biggest engineering companies in the world.



Protection and control requirements



TeSys innovation



100%
anticipation

Schneider Electric puts reliability at the heart of its strategy of innovation and offers, with TeSys, a wide range of solutions for the protection and power control that covers all your needs, from basic to advanced

Ensuring industrial profitability

> High performance reliability

Continuity of service

Thanks to total coordination, in the event of short-circuit you can restart your motors without having to replace any components.

Reliability

TeSys U is committed to precision and reliability for better utilisation of your motors, even when they've been in service for several years.

Diagnostics

TeSys U allows collecting and monitoring of your motor operating data. It prevents failure situations and reduces machine downtime.



CE 0080
Ex II (2) GD
CCC
SP
UL LISTED



100% fewer motor burn-outs

thanks to more accuracy of tripping characteristic

70% downtime reduction"

Alarms give time to solve problem before trip

3 functions in 1 device

6 part numbers to realize motor starters up to 15 kW

100% worldwide availability

> Integration and open approach

Upgrading and maintenance

With TeSys U, installation and future upgrading of production processes are extremely fast.

Customers who use TeSysU have significantly reduced their maintenance costs thanks to the monitoring and fault logging functions.



Up to 60% commissioning time saving thanks to an easier process tuning. Impact of modification and evolution divided by 2

Up to 50% maintenance cost savings thanks to a shorter problem fixing

Spare parts stock divided by 4 thanks to the wide range technology and the modularity



The multifunction Control Unit designed for high end protection and monitoring functions is also a valuable diagnostic plug-in tool for temporarily commissioning or maintenance operation in-situ.

Ensuring industrial profitability

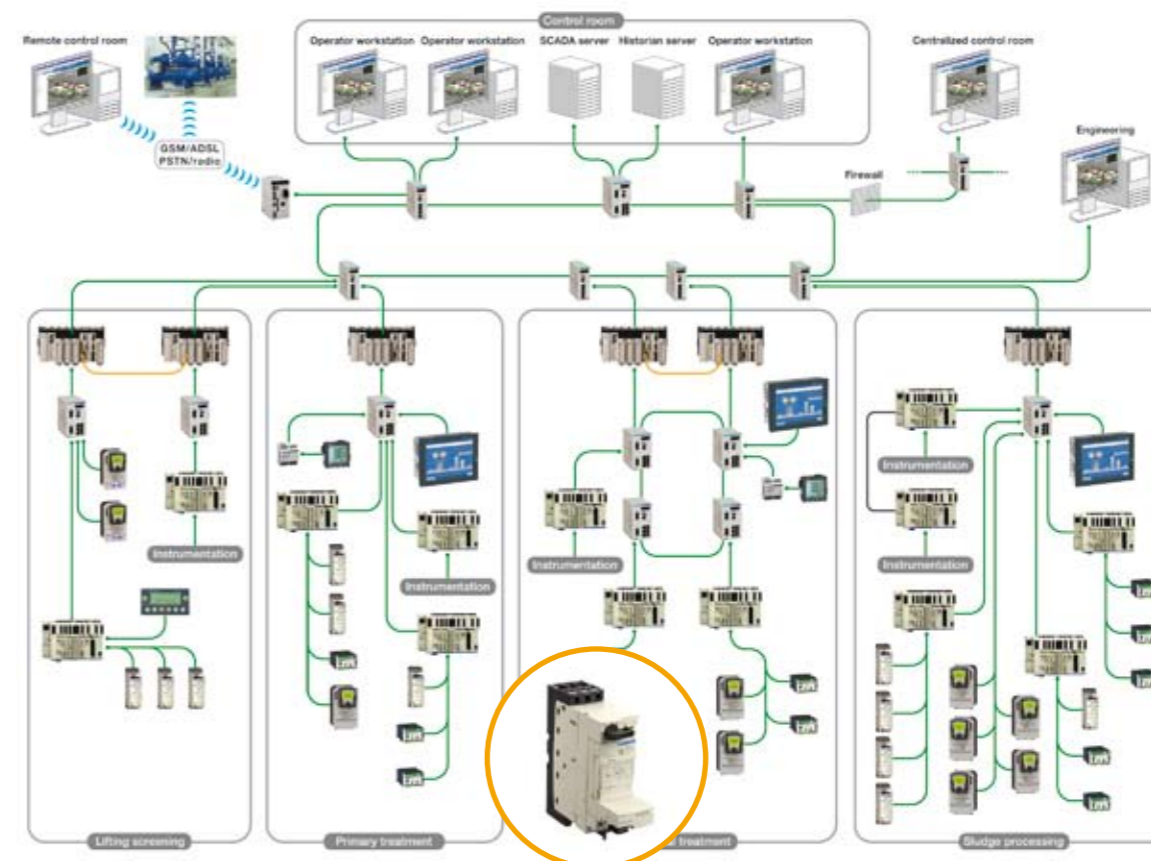
Integration and open approach

Perfect integration

TeSys U integrates perfectly into the MotorSys range of intelligent panels, a worldwide point of reference in the centralisation of communicating motor starters.



Example of architecture used in a water treatment plant



Example of architecture used in a cement works

