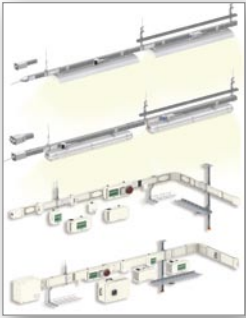


Canalis® *evolution*

Prefabricated busbar trunking
from 20 to 5000 A

An electrifying new repertoire



Decentralised
distribution: electrical
power available
throughout your
installation



Reliable and competitive electrical distribution

Installation benefits

- Highly competitive for installations with at least one tap-off every three metres
- Even greater savings as the number of loads increases with your business

Canalis KN



Canalis KS



Benefits throughout the life of your installation

In decentralised distribution, operating requirements and costs are taken into account right from the start

- Loads can be added, moved or replaced quickly, with power on and without shutting down the installation
- Modifications are inexpensive
 - loads are close to the line
 - tap-off points are always available
- Far less time required
- For major installation modifications, the existing trunking can be easily dismantled and reused

With **Canalis evolution**,
you play all the right notes!

The **Canalis** concept,
decentralised distribution

Electrical energy available throughout your installation

Advantages of the Canalis system

- simplicity
- upgradeability
- continuity of service and operation
- quality and safety

Exclusive benefits of the Schneider Electric system

The total coordination of the Schneider Electric system simplifies your installation design work while guaranteeing the safety of life and property:

- design work is possible even without knowing load locations
- installation quality and conformity is ensured, even for future upgrades

Greenhouses, offices,
supermarkets, shops,
garages, workshops...

Canalis evolution,
for decentralised distribution in tune
with your needs!

A electrifying new repertoire for Canalis

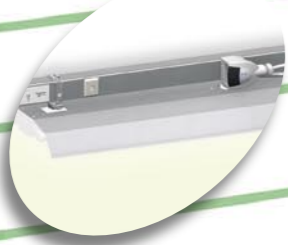
- **Enhanced performance**
 - IP 55 degree of protection
 - new ratings: KN 160 A and KS up to 1000 A
- **New lighting products**
 - pre-wired luminaires to complement the KBA range
 - a new KBX strip lighting range
- **New mounting accessories**
 - quick mounting system
 - cable tray supports for KN and KS ranges
 - cable ducts for KBA and KBB ranges
 - common support for Canalis and VDI (Voice, Data, Image) circuits

Logistic centres,
industry, merchant marine,
tunnels, ...

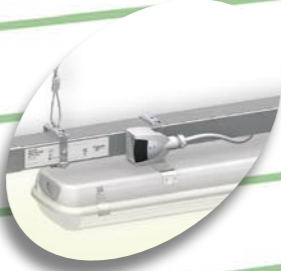
Canalis has evolved for better integration within your environment

- **The Canalis KN and KS ranges are now white**
 - improving working conditions in all environments, from industrial buildings to offices and stores
 - fitting naturally into the Merlin Gerin range of electric power distribution products (Prisma Plus, Kaedra, etc.)
- **A significant contribution to sustainable growth**
 - Canalis can be reused and all of its components are fully recyclable
 - Canalis contains no PVCs and produces no toxic gases or waste
 - Canalis reduces risks concerning exposure to electromagnetic fields
 - Canalis complies with European regulations calling for the restriction of certain hazardous substances (RoHS directive)

Canalis KBA



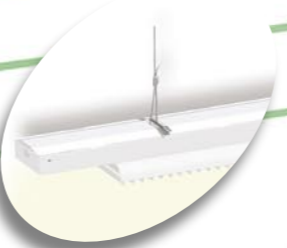
Canalis KBB



Canalis KDP



Canalis KBX



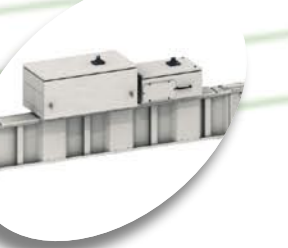
Canalis KN



Canalis KS



Canalis KT



Canalis matches your needs

Complete tested distribution solutions that comply with standards. Perfectly suited to traditional applications (factories, warehouses, etc.) and to the distribution of electrical power from the incoming transformer on through to all types of loads in offices, commercial premises, laboratories, etc.



Canalis has evolved to make your life easier

- **Plastic tap-off units up to 125 A**
 - no risk of injury during installation
 - no more earthing problems
 - lighter and easier to handle
 - corrosion-free
- **Guaranteed safety.**

The tap-off units can be plugged in and out of live trunking. Servicing can be carried out safely:

 - protection against direct contact.
 - tap-off units with circuit breakers that are automatically compatible with the prospective short circuit current at the considered point in the installation.
 - interlocking devices that prevent on-load connection or disconnection of tap-off units.

A new path for achieving your electrical installations

A comprehensive offer

Canalis is part of a comprehensive offer of products that are perfectly coordinated to meet all medium and low voltage electrical distribution requirements. All of these products have been designed to work together: electrical, mechanical and communication compatibility.

The electrical installation is thus both optimised and has improved performance:

- better service continuity,
- increased personnel and equipment safety,
- guaranteed upgradeability,
- efficient monitoring and control.

You therefore have all the advantages at hand in terms of know-how and creativity for achieving optimised, safe, upgradeable and compliant installations.

Tools for facilitating the design and installation

With Schneider Electric, you have a complete range of tools to help you get to know and install the products whilst complying with current standards and good working practices. These tools, technical sheets and guides, design software, training courses, etc are regularly updated.

Schneider Electric is associating itself with your know-how and your creativity to produce optimised, safe, upgradeable and compliant installations

For a real partnership with you

A universal solution doesn't exist because each electrical installation is specific. The variety of combinations on offer allows you to truly customise the technical solutions.

You are able to express your creativity and put your know-how to best advantage when designing, manufacturing and exploiting an electrical installation.

Schneider Electric Industries SAS

Postal address:
Electrical Distribution Communication
F-38050 Grenoble cedex 9
Tel: +33 (0)4 76 57 60 60
<http://www.schneider-electric.com>

As standards and equipment change from time to time, please ask for confirmation of the texts and pictures given in this publication.



*This document has been printed
on ecological paper.*

Published by: Schneider Electric SA
Design, production: Link to business
Printed by: Imprimerie des Deux Ponts