

DCBMLIC Building Monitor

Introduction

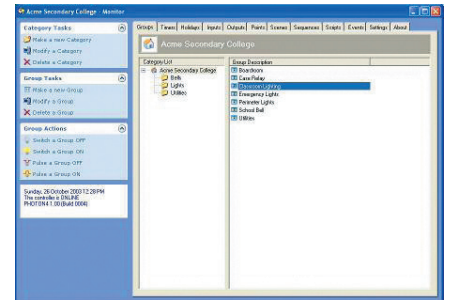
The DCBMLIC Building Monitor; monitoring and control software, allows the user interface to manage and control DCBM DALI line controllers and their associated DALI lines.

Ordering Information

Part Number	Description
DCBMLIC-U	Building Monitor, Monitoring and Control Software. Unlimited Controllers
DCBMLIC-30	Building Monitor, Monitoring and Control Software. 30 Controllers
DCBMLIC-10	Building Monitor, Monitoring and Control Software. 10 Controllers
DCBMLIC-1	Building Monitor, Monitoring and Control Software. 1 Controller

Features

- Manage DALI lines via one or more BM-DALI line controllers.
- Configure DALI groups and scenes.
- Configure automatic time schedules for control of ballasts, groups, scenes and stored sequences.
- Configure controller on-board real time clock with automatic daylight savings correction.
- Configure sunrise and sunset events with offset times.
- Monitor the status of DCBM DALI line controllers, DALI ballasts and lamps.
- View history of system status messages.
- Manually control DALI groups, scenes and ballasts.
- Configure timers, holidays and schedule control of group zone variables.



DCBMLIC

Clipsal Australia Pty Ltd

A member of Schneider Electric

Head Office

33-37 Port Wakefield Road,
Gepps Cross, South Australia 5094

Postal Address

PO Box 132
Enfield Plaza, South Australia 5085

Website www.dalicontrol.com

Contact your local Schneider Electric office for sales and technical support. www.clipsal.com/trade/contact_us

You can find this data sheet and many others online in PDF format at: www.dalicontrol.com

clipsal.com

Clipsal Australia Pty Ltd reserves the right to change specifications, modify designs and discontinue items without incurring obligation and whilst every effort is made to ensure that descriptions, specifications and other information in this catalogue are correct, no warranty is given in respect thereof and the company shall not be liable for any error therein.

© Clipsal Australia Pty Ltd

This material is copyright under Australian and international laws. Except as permitted under the relevant law, no part of this work may be reproduced by any process without prior written permission of and acknowledgement to Clipsal Australia Pty Ltd.