

Schneider StarCharge Fast 720

OCPP Protocol Connectivity Guide

D3999127EN_01

04/2026



Legal Information

The information provided in this document contains general descriptions, technical characteristics and/or recommendations related to products/solutions.

This document is not intended as a substitute for a detailed study or operational and site-specific development or schematic plan. It is not to be used for determining suitability or reliability of the products/solutions for specific user applications. It is the duty of any such user to perform or have any professional expert of its choice (integrator, specifier or the like) perform the appropriate and comprehensive risk analysis, evaluation and testing of the products/solutions with respect to the relevant specific application or use thereof.

The Schneider Electric brand and any trademarks of Schneider Electric SE and its subsidiaries referred to in this document are the property of Schneider Electric SE or its subsidiaries. All other brands may be trademarks of their respective owners.

This document and its content are protected under applicable copyright laws and provided for informative use only. No part of this document may be reproduced or transmitted in any form or by any means (electronic, mechanical, photocopying, recording, or otherwise), for any purpose, without the prior written permission of Schneider Electric.

Schneider Electric does not grant any rights or license for commercial use of the document or its content, except for a non-exclusive and personal license to consult it on an "as is" basis.

Schneider Electric reserves the right to make changes or updates with respect to or in the content of this document or the format thereof, at any time without notice.

To the extent permitted by applicable law, no responsibility or liability is assumed by Schneider Electric and its subsidiaries for any errors or omissions in the informational content of this document, as well as any non-intended use or misuse of the content thereof.

Safety Information

Important Information

Read these instructions carefully and look at the equipment to become familiar with the device before trying to install, operate, service, or maintain it. The following special messages may appear throughout this documentation or on the equipment to warn of potential hazards or to call attention to information that clarifies or simplifies a procedure.



The addition of this symbol to a “Danger” or “Warning” safety label indicates that an electrical hazard exists which will result in personal injury if the instructions are not followed.



This is the safety alert symbol. It is used to alert you to potential personal injury hazards. Obey all safety messages that follow this symbol to avoid possible injury or death.

⚠ DANGER
DANGER indicates a hazardous situation which, if not avoided, will result in death or serious injury.

⚠ WARNING
WARNING indicates a hazardous situation which, if not avoided, could result in death or serious injury.

⚠ CAUTION
CAUTION indicates a hazardous situation which, if not avoided, could result in minor or moderate injury.

NOTICE
NOTICE is used to address practices not related to physical injury. The safety alert symbol shall not be used with this signal word.

Please Note

Electrical equipment should be installed, operated, serviced, and maintained only by qualified personnel. No responsibility is assumed by Schneider Electric for any consequences arising out of the use of this material.

A qualified person is one who has skills and knowledge related to the construction and operation of electrical equipment and its installation and has received safety training to recognize and avoid the hazards involved.

Safety Instructions

DANGER

HAZARD OF ELECTRIC SHOCK

- Do not open the product.
- Product to be serviced by qualified personnel only.

Failure to follow these instructions will result in death or serious injury.

NOTE: All instructions applicable to the enclosed product and all safety precautions must be observed.

For more information, you can download the app of the Customer Care Center by using the following QR code:



Table of Contents

- Legal Information2
- Safety Information.....3
 - Important Information3
 - Please Note.....3
 - Safety Instructions.....4
- About the Book7
 - Purpose of this Document7
 - Document Version History.....7
 - Terminology7
 - Related Documents.....7
 - Information on Non-Inclusive or Insensitive Terminology.....8
 - Product Family8
 - Acceptable Scenarios.....8
- Supervision Commissioning.....9
- Supported OCPP Operations.....9
 - Supported Messages9
 - BootNotification10
 - DataTransfer10
 - MeterValues13
 - StatusNotification14
 - SetChargingProfile14
 - GetDiagnostics.....14
 - UpdateFirmware.....14
- Security Profiles.....14
- User Authentication15
 - User Authentication Modes15
 - OCPP Keys for Authentication modes15
 - Authentication Time-Out.....15
 - Local Authentication.....15
 - Remote Authentication.....15
- Configuration Keys16
 - Standard Keys.....16
 - Non-Standard Keys.....18

Vendor Error Codes	20
OCPP Vendor Error Codes	20
Errors in Power Cabinet	20
Errors in Dispenser	21
Stop Reason	22
Stop Reason in Power Cabinet	22
Stop Reason in Dispenser	23
Cybersecurity	24

About the Book

Purpose of this Document

The purpose of this document is to guide you with the connectivity of Schneider StarCharge Fast 720 split chargers with OCPP 1.6 supervision.

Document Version History

Document reference version	Publish Date	Evolution
01	20/04/2026	Append acceptable scenario with Overhead Dispenser. Append some non-standard keys. Append some vendor error code.
00	15/11/2025	Create this document.

Terminology

Acronym	Designation
OCPP	OCPP (Open Charge Point Protocol) is an open communication protocol that enables interoperability between electric vehicle supply equipment (EVSE) and backend management systems
EVSE	E VSE (Electric Vehicle Supply Equipment) refers to the equipment and control systems used to supply electrical energy to electric vehicles.

Related Documents

Document title	Document reference version	Author	Release date	Link
Open Charge Point Protocol 1.6	1.6	Open Charge Alliance	12/2019	https://openchargealliance.org/
Improved security for OCPP 1.6-J	1.0	Open Charge Alliance	02/2023	https://openchargealliance.org/
Schneider StarCharge Fast 720 Cybersecurity Guide D3999124	00	Schneider Electric	11/2025	

Information on Non-Inclusive or Insensitive Terminology

As a responsible, inclusive company, Schneider Electric is constantly updating its communications and products that contain non-inclusive or insensitive terminology. However, despite these efforts, our content may still contain terms that are deemed inappropriate by some customers.

Product Family

The document is applicable to the following products families.

- Schneider StarCharge Fast 720 (720 range and 480 range)

Acceptable Scenarios

The document is applicable to the scenario below.

- Charging system which comprises of maximum 1 Power Cabinet and maximum 6 Floor-standing Dispensers.
- Charging system which comprises of maximum 1 Power Cabinet and maximum 12 Overhead Dispensers.
- Charging system which comprises of maximum 1 Power Cabinet and maximum 12 connectors mix installation of Floor-standing Dispensers and Overhead Dispensers.

Supervision Commissioning

For more information on supervision commissioning, refer to the related Commissioning Guide.

This document is not available in the Schneider Electric Download Center. Contact your Schneider Electric representative to get access to this guide.

Supported OCPP Operations

The supported protocol is OCPP 1.6 JSON.

The following chapters describe details of the supported OCPP messages.

Supported Messages

List and describe the supported OCPP messages.

Operations are initiated by charge point.

Operation Group	Message	Supported	Comments
Core	Authorize	x	
	BootNotification	x	See details in section <i>BootNotification</i>
	Heartbeat	x	
	MeterValues	x	See details in section <i>MeterValues</i>
	StartTransaction	x	
	StatusNotification	x	See details in section <i>StatusNotification</i>
	StopTransaction	x	
Firmware Management	DiagnosticsStatusNotification	x	
	FirmwareStatusNotification	x	
Security Extension	LogStatusNotification	x	
	SecurityEventNotification	x	
	SignCertificate	x	
	SignedFirmwareStatusNotification	x	

1. *StopTransaction: Power loss during ongoing transaction*
2. *“StopTransaction” will be sent to CSMS before charger shutting down.*

Operations are initiated by central system.

Operation Group	Message	Supported	Comments
Core	ChangeAvailability	x	
	ChangeConfiguration	x	
	ClearCache	x	
	DataTransfer	x	
	GetConfiguration	x	

	RemoteStartTransaction	x	
	RemoteStopTransaction	x	
	Reset	x	
	UnlockConnector	x	Not applicable.
Firmware Management	GetDiagnostics	x	See details in section <i>GetDiagnostics</i>
	UpdateFirmware	x	See details in section <i>UpdateFirmware</i>
Local Authentication	GetLocalListVersion	x	
List Management	SendLocalList	x	
Reservation	CancelReservation	x	
	ClearChargingProfile	x	
	SetChargingProfile	x	See details in section <i>SetChargingProfile</i>
Remote trigger	TriggerMessage	x	
Security Extension	CertificateSigned	x	
	DeleteCertificate	x	
	GetInstalledCertificateIds	x	
	ExtendedTriggerMessage	x	
	GetLog	x	
	InstallCertificate	x	
	SignedUpdateFirmware	x	

BootNotification

- “chargePointModel”:
 - “DC 720” for 720 range.
 - “DC 480” for 480 range.
- “chargePointVendor”: "Schneider Electric"
- “chargePointSerialNumber”
- “firmwareVersion”

DataTransfer

Supported “DataTransfer” from Charge Point Operator (CPO).

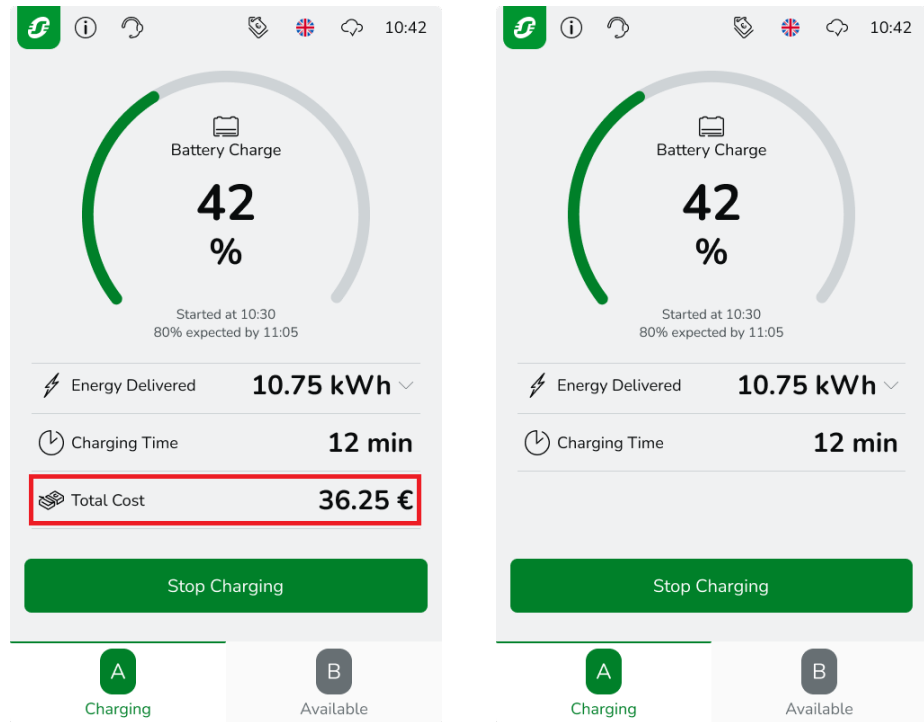
CostUpdated

This message is used to be able to display in real time, dynamically, the effective cost of the charger for the EV driver. On the EVSE HMI the EV driver can see cost displayed and increasing like using a traditional gasoline pump.

This message needs to be constantly sent with updated values to let have EV driver constantly get update of the cost.

If no message is provided no information is present for the EV driver. The place is totally empty.

Examples, message is provided/ message is not provided.



NOTE: For the Overhead Dispenser, due to it does not have an HMI screen, the charger could receive “CostUpdated” message correctly, but no place to display.

Schema

- “vendorId”: “com.se.cost”
- “messageId”: “CostUpdated”
- “data”:
 - “currency”
 - “method”
 - “connectID”
 - “totalCost”
 - “TransactionId”
- data (response): empty

Data example:

```
{currency:"VNĐ","method":"CostUpdated","connectID":1,"totalCost":16780,"transactionId":358}}
```

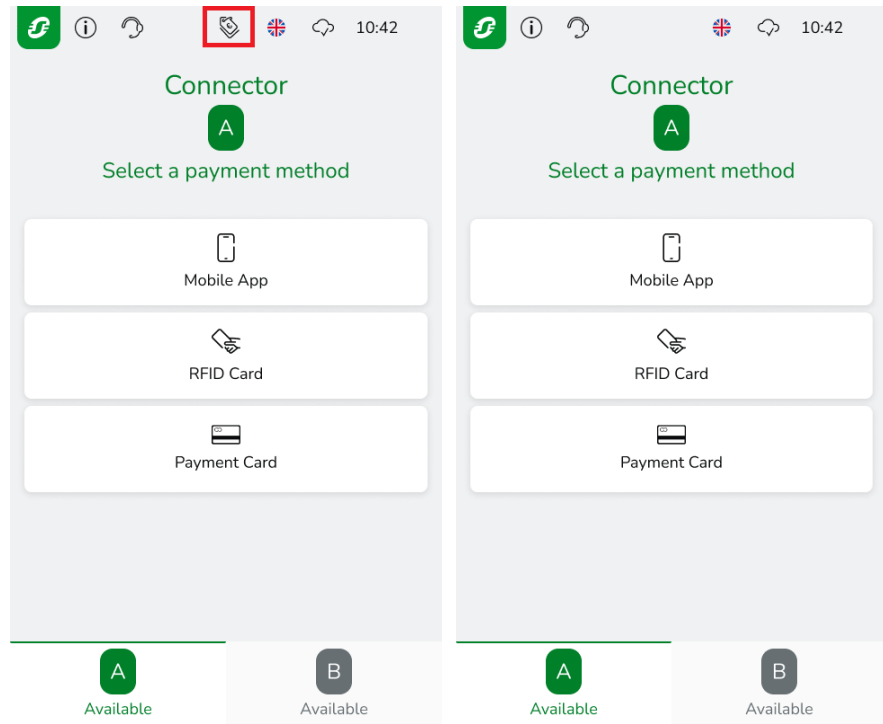
TariffDownload

Message to use to provide an image with tariff information to display before the EV driver starts to charge.

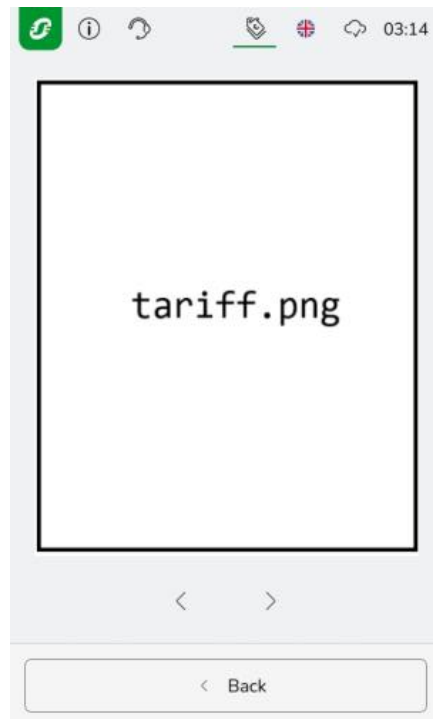
If this message is provided a “Tariff” button appears on the EV driver HMI. If the EV driver clicks on it, he/she will be directed to a page where the image will be displayed full screen. This message needs to be sent only once and/or when tariff is updated.

Nothing will be displayed if the message is not provided.

Examples, message is provided/ message is not provided.



Click the button to enter the tariff page.



NOTE: For the Overhead Dispenser, due to it does not have an HMI screen, the charger could receive “TariffDownload” message correctly, but no place to display.

Schema

- "VendorId": "com.se.tariff"
- "messageId": "TariffDownload"
- "data":

- "fileType"
- "type"
- "location"
- "size"

Data example:

```
{ "fileType": "Tariff", "type": "file", "location": "ftp://abc.com/tariff.png", "size": 2097152 }
```

Data response example:

```
{ "downloadStatus": "Downloaded" }
```

Picture file name fixes to "tariff.png".
 Location of tariff file, support FTP, HTTP and HTTPS.
 File size cannot exceed 2048 Kbytes.
 The picture ratio supports 47:26 and 44:53.
 The best picture resolution is 440x530.

MeterValues

MeterValues parameter	Parameter values
Reading Context	Sample Periodic
Value Format	Raw
Measurands	Energy.Active.Import.Register in Wh Power.Active.Import in W Power.Offered in W SoC in % Voltage in V ¹ Power.Factor in % ¹

1. These values will only be sent when connector is 0. And the Sample Periodic "MeterValues" of Connector ID 0 will be sent only when the key "EnableConnector0MeterValues" is enable.

MeterValues parameter	Parameter values
Reading Context	Sample Periodic
Value Format	Raw
Measurands	Energy.Active.Import.Register in Wh Power.Active.Import in W Power.Offered in W SoC in %

1. Clock Aligned samples will only be reported during active transaction.

StatusNotification

Optional parameter reported:

- “Timestamp”

SetChargingProfile

Limitations:

- CCS2 connector: Setpoint = 0 kW leads to a residual charge of approximately 0.5 A per power module.
- CCS2 connector: For charging profile limit value other than 0, the minimum acceptance power limit threshold is 1 kW.

Charging profile parameter	Parameter values
chargingProfilePurpose	TxDefaultProfile TxProfile ChargePointMaxProfile
chargingProfileKind	Absolute Recurring Relative
recurrencyKind	Daily Weekly
chargingSchedule	chargingSchedule in watts (W) minChargeRate not supported
chargingSchedulePeriod	numberPhases not applicable on DC charger

GetDiagnostics

The supported protocols are FTP, FTPS, HTTP, and HTTPS.

Note: The max data period that you can get the diagnostics file is one day.

UpdateFirmware

The supported protocols are FTP, FTPS, HTTP, and HTTPS.

Security Profiles

The following modes are supported by the charger:

- No TLS / No Basic Authentication
- TLS / No Basic Authentication
- No TLS / Basic Authentication
- TLS / Basic Authentication, recommended

User Authentication

User Authentication Modes

- Authentication is required from CPO
 - Remote request from CPO.
 - Badge swipe authenticated by CPO.
- No authentication is required. No badge is needed.
 - Customization of default IdTag for free mode is supported.

OCPP Keys for Authentication modes

Authentication modes	Authentication required from CPO	AuthenticationOCPPMode = true
	Free (no badge needed)	AuthenticationOCPPMode = false Defaultidtag : provided by CPO, default value: "SIMTAG"
Offline strategies	Allow all badges	AllowOfflineTxForUnknownId = true
	Cache list only	AllowOfflineTxForUnknownId = false LocalAuthorizeOffline = true AuthorizationCacheEnable = true
	Local list only	AllowOfflineTxForUnknownId = false LocalAuthorizeOffline = true LocalAuthListEnabled = true
	Reject all badges	AllowOfflineTxForUnknownId = false LocalAuthorizeOffline = false

Authentication Time-Out

Local Authentication

Conditions	Behaviors
One connector is plugged in	The charging operation starts after the badge is presented to the screen. For
Both connectors are plugged in ¹	The charging operation starts on the connector that is visible on the screen. To change the connector, touch the screen.
No connector is plugged in	The screen is locked on the welcome page.

- *This condition is applied by the Flood-standing Dispenser with dual connectors.*

Remote Authentication

The table below shows how to start the remote authentication with the connector ID:

Conditions	Behaviors
------------	-----------

The connector is plugged in	The charging operation starts.
The connector is not plugged in, and EnableRemoteStartNoConnectedEV = false	The charging request is rejected.
The connector is not plugged in, and EnableRemoteStartNoConnectedEV = true	The connector is plugged in within 2 minutes. The charging operation starts.
	The connector is not plugged in within 2 minutes. The charging request will be dropped.
The connector ID is incorrect	The charging request is rejected.

The table below shows how to start the remote authentication without the connector ID:

Conditions	Behaviors
One connector is plugged in	The charging operation starts.
Both connectors are plugged in	The charging operation starts with Connector A.
No connector is plugged in, and EnableRemoteStartNoConnectedEV = false	The charging request is rejected.
No connector is plugged in, and EnableRemoteStartNoConnectedEV = true	The connector is plugged in within 2 minutes. The charging operation starts.
	The connector is not plugged in within 2 minutes. The charging request will be dropped.

Configuration Keys

Standard Keys

This table details all OCPP 1.6 standard configuration keys that can be read or modified from supervision.

Refer to the *downloadable OCPP 1.6 documentation*, page 6 for description, type and unit.

Key	Access Mode	Default Value
AllowOfflineTxForUnknownId	RW	true
AuthorizationCacheEnabled	RW	false
AuthorizeRemoteTxRequests	RW	true
ClockAlignedDataInterval	RW	0
ConnectionTimeOut	RW	120
GetConfigurationMaxKeys	RO	200
HeartbeatInterval	RW	60
LocalAuthorizeOffline	RW	true
LocalPreAuthorize	RW	false
MeterValuesAlignedData	RW	Current.Import Current.Offered Energy.Active.Import.Register Power.Offered Power.Active.Import
MeterValuesAlignedDataMaxLength	RO	9

MeterValuesSampledData	RW	Current.Import Current.Offered Energy.Active.Import.Register Power.Offered Power.Active.Import SoC
MeterValuesSampledDataMaxLength	RO	8
MeterValueSampleInterval	RW	60
MinimumStatusDuration	RW	10
NumberOfConnectors	RO	1...12
ResetRetries	RW	2
ConnectorPhaseRotationMaxLength	RO	1
ConnectorPhaseRotation	RW	Not Applicable
StopTransactionOnEVSideDisconnect	RW	true
StopTransactionOnInvalidId	RW	true
StopTxnAlignedDataMaxLength	RO	1
StopTxnSampledDataMaxLength	RO	2
SupportedFeatureProfiles	RO	Core FirmwareManagement LocalAuthListManagement Reservation SmartCharging RemoteTrigger
SupportedFeatureProfilesMaxLength	RO	6
TransactionMessageAttempts	RW	2
TransactionMessageRetryInterval	RW	10
UnlockConnectorOnEVSideDisconnect	RW	false
WebSocketPingInterval	RW	20
LocalAuthListEnabled	RW	false
LocalAuthListMaxLength	RO	100000
SendLocalListMaxLength	RO	400
ReserveConnectorZeroSupported	RO	true
ChargeProfileMaxStackLevel	RO	20
ChargingScheduleMaxPeriods	RO	50
ConnectorSwitch3to1PhaseSupported	RO	false
MaxChargingProfilesInstalled	RO	40
ChargingScheduleAllowedChargingRateUnit	RO	Current, Power
StopTxnAlignedData	RW	-
StopTxnSampledData	RW	-
AuthorizationKey (*)	W	-
SecurityProfile	RW	1
CertificateSignedMaxChain	RO	1000
CertificateStoreMaxLength	RO	10
CpoName	RW	-
RO = read only RW = read and write W = write only		

* = from improved security for OCPP 1.6

Non-Standard Keys

Key	Access Mode	Type	Unit	Default Value	Description
AuthenticationOCPPMode	RW	Boolean	-	true	Allows authentication by CPO false: no authentication, free charging
DefaultIdTag	RW	String[20]*	-	"SIMTAG"	idTag sent through Authorize request when AuthenticationOCPPMode = false
SupervisionUrl	RW	String[255]*	-	-	OCPP supervision URL
BoxIdentifier	RW	String[50]*	-	-	OCPP Charger identifier
ChargeLimitedPower	RO	Integer	kW	-	Charging station maximum power
Connector1LimitedPower	RO	Integer	-	-	Connector 1 maximum power
Connector2LimitedPower	RO	Integer	-	-	Connector 2 maximum power
Connector3LimitedPower	RO	Integer	-	-	Connector 3 maximum power
Connector4LimitedPower	RO	Integer	-	-	Connector 4 maximum power
Connector5LimitedPower	RO	Integer	-	-	Connector 5 maximum power
Connector6LimitedPower	RO	Integer	-	-	Connector 6 maximum power
Connector7LimitedPower	RO	Integer	-	-	Connector 7 maximum power
Connector8LimitedPower	RO	Integer	-	-	Connector 8 maximum power
Connector9LimitedPower	RO	Integer	-	-	Connector 9 maximum power
Connector10LimitedPower	RO	Integer	-	-	Connector 10 maximum power
Connector11LimitedPower	RO	Integer	-	-	Connector 11 maximum power
Connector12LimitedPower	RO	Integer	-	-	Connector 12 maximum power
Connector1Type	RO	String	-	-	Connector 1 type
Connector2Type	RO	String	-	-	Connector 2 type
Connector3Type	RO	String	-	-	Connector 3 type
Connector4Type	RO	String	-	-	Connector 4 type
Connector5Type	RO	String	-	-	Connector 5 type
Connector6Type	RO	String	-	-	Connector 6 type
Connector7Type	RO	String	-	-	Connector 7 type
Connector8Type	RO	String	-	-	Connector 8 type
Connector9Type	RO	String	-	-	Connector 9 type
Connector10Type	RO	String	-	-	Connector 10 type
Connector11Type	RO	String	-	-	Connector 11 type
Connector12Type	RO	String	-	-	Connector 12 type
disconnectedMeterValueSampleInterval	RW	Integer	second	900	Allows setting of sampling

					interval of the meter values when the charge and supervision are disconnected. The sampling interval ranges from 5 to 3600 seconds. Samples are sent to supervision. Set 0 means to use the online value.
SecurityEventsEnabled	RW	Boolean	-	true	True: security events are notified to CSMS. False: security events are not notified of CSMS.
EnableConnector0MeterValues	RW	Boolean	-	false	Control whether to send MeterValues of connectorId = 0. For the MeterValues of connectorId = 0, it will be sent as "Charging Session Meter Values" when at least one connector is in charging.
EnableMeterValuesContainVoltage	RW	Boolean	-	false	Gets the DC voltage from the charger via the MeterValues message. True: the charger reports the output voltage to the backend. False: the charger does not report the output voltage to the backend.
EnableRemoteStartNoConnectedEV	RW	Boolean	-	true	Authorizes remote start transaction from CPO when no EV is connected.
AdditionalRootCertificateCheck	RW	Boolean	-	false	For CSMS, update client-side certificate for profile 3. True: Charger will check the new certificate and store old certificate. Once new certificate fails in connection, old one will be used again. False: Charger will directly replace client-side certificate which was sent from CSMS.
CallMsgInOrder	RW	Boolean	-	true	True: the OCPP message strictly follows the one-by-one sequence (as standard defined). False: the CSMS can send a

					new OCPP message and the charger will response it while another OCPP message is processed.
OfflineTxMsgQueueEnable	RW	Boolean	-	true	True: offline charging data sends in sequence and denied new charging request before sending all messages. False: offline charging data sends not in sequence, and CSMS could start a new charging session while the sending.
ISO15118PnCEnabled	RW	Boolean	-	false	For CSMS remote enable authentication mode of PnC which defined in ISO15118.

(*): in line with OCPP 1.6 standard, configuration keys are case insensitive

Vendor Error Codes

 **DANGER**

HAZARD OF ELECTRIC SHOCK, EXPLOSION OR ARC FLASH

- Only trained personnel are allowed to carry out maintenance operations.

Failure to follow these instructions will result in death or serious injury.

OCPP Vendor Error Codes

The device will send vendor error code marked with “F” when the status is “Fault” in StatusNotification and will send vendor error code marked with “W” in any other status except “Finishing”.

Errors in Power Cabinet

DTC	OCPP Error Code	Description	Level
0x200002	OtherError	Power Module Fault	W
0x200009	OtherError	AC meter Fault	W
0x20000B	OtherError	Power Cabinet encryption chip error alarm	W
0x200104	OtherError	PWM Fan Comm Warning	W
0x200105	OtherError	Power Cabinet Overheating Warning	W
0x200202	OtherError	Cabinet Emergency Stop	F
0x200203	OtherError	Power Cabinet Liquid Warning	F
0x200204	OtherError	Power Cabinet Door Open	F
0x200206	OtherError	Input Over-Voltage Error	F
0x200207	OtherError	Input relay control fault	F
0x200208	OtherError	Input Under-Voltage Error	F

0x20020B	OtherError	Tilt Warning	F
0x20020F	OtherError	Input Surge Protection Alarm	F
0x200214	OtherError	Power Cabinet Storage Error	F
0x200216	OtherError	The power modules are mixed up	F
0x200217	OtherError	Cabinet power Loss	F
0x200219	OtherError	Abnormal door access in the system	F
0x20021C	OtherError	Abnormal dumping in the system	F
0x20021D	OtherError	Abnormal liquid level in the system	F
0x20021E	OtherError	Power cabinet system fan failure (error report)	F
0x20021F	OtherError	Power relay fault	F

F = fault, will stop charging session and not allow to start next charging
W = warning, will not stop charging session and allow to start next charging

Errors in Dispenser

DTC	OCPP Error Code	Description	Level
0x100005	ReaderFailure	Swipe Machine Communication Error ¹	W
0x100007	OtherError	Insulation Warning	W
0x100009	OtherError	SD Card Error	W
0x10000C	OtherError	SECC Connection Error	W
0x100012	OtherError	LED Communication Error. ¹	W
0x100018	OtherError	DC Output Relay Adhesion	W
0x10001C	OtherError	The first set of terminal fans have malfunctioned	W
0x10001D	OtherError	The second set of terminal fans have malfunctioned. ¹	W
0x10001E	OtherError	The third set of terminal fans have malfunctioned. ¹	W
0x10001F	OtherError	The fourth set of terminal fans have malfunctioned. ¹	W
0x100020	OtherError	Encryption Chip Error	W
0x100102	HighTemperature	Cable Connector Overheating Warning	W
0x100103	OtherError	Cable joint temperature difference is too large	W
0x10010A	OtherError	Positive contact temperature mutation	W
0x10010B	OtherError	Negative contact temperature mutation	W
0x10010C	OtherError	Contact temperature mutation	W
0x100202	OtherError	Dispenser Emergency Stop	F
0x100206	GroundFailure	Grounding Error	F
0x100207	OtherError	Insulation Board Comm Hardware Error	F
0x100208	OtherError	Output relay control fault	F
0x10020A	OtherError	Insulation Fault	F
0x10020B	OtherError	Dispenser Liquid Level Warning ¹	F
0x10020C	OtherError	Dispenser Door Open	F
0x10020D	OtherError	High humidity alarm	F
0x10020E	OtherError	Tilt Warning	F
0x10020F	PowerMeterFailure	Meter Communication Data Warning	F
0x100210	OtherError	Sub-board Communication Error	F
0x100211	OtherError	Power Loss	F
0x100212	OtherError	Power Cabinet Communication Error	F
0x100213	OverCurrentFailure	Over Current Error	F

0x100214	OverVoltage	Output Over Voltage	F
0x100216	OtherError	PLC Board Offline	F
0x100221	OtherError	Dispenser Fuse Warning	F
0x100222	OtherError	Gun unavailable	F
0x100223	OtherError	Over-temperature fault inside the dispenser	F
0x100226	OtherError	Cable Polarity Error	F
0x100291	OtherError	Contact sensors short	F
0x100292	OtherError	Contact sensors open	F
0x100293	OtherError	Positive contact sensor over temperature	F
0x100294	OtherError	negative contact sensor over temperature	F
0x10029A	OtherError	Standby state bus DC+/- voltage greater than safe voltage (60V)	F
0x10029D	OtherError	Charging Cable Theft Fault	F

F = fault, will stop charging session and not allow to start next charging
 W = warning, will not stop charging session and allow to start next charging

1. These errors only occur in Flood-standing Dispenser and will not occur in Overhead Dispenser.

Stop Reason

The device will send vendor error code with stop reason items when a charging session just stopped, it is the time which the status in “StatusNotification” is “Finishing”.

Stop Reason in Power Cabinet

Code	OCPP Error Code	Description
0xB00001	OtherError	Power cabinet emergency stop is pressed
0xB00002	OtherError	Power cabinet liquid level alarm
0xB00003	OtherError	Power cabinet door open
0xB00008	OtherError	Input relay control fault
0xB0000B	OtherError	Power cabinet input surge protection alarm
0xB00204	OtherError	Power module input under-voltage fault
0xB00205	OtherError	Power Module input over-voltage fault
0xB0020E	OtherError	The impact failure
0xB00219	OtherError	Power cabinet sd card fault
0xB0021C	OtherError	Abnormal stop of the internal access control system
0xB00220	OtherError	Power Cabinet lose power
0xB00221	OtherError	Abnormal stop due to dumping fault in the system
0xB00222	OtherError	Abnormal stop due to liquid level fault in the system
0xB00223	OtherError	Power cabinet system fan failure stops
0xB00224	OtherError	Power relay fault
0xB00225	OtherError	The power modules are mixed up

Stop Reason in Dispenser

Code	OCPP Error Code	Description
0xA00001	OtherError	Hardware reset
0xA00002	OtherError	Power loss
0xA00004	OtherError	Dispenser emergency stop is pressed
0xA00005	PowerMeterFailure	Meter communication fault
0xA00006	OtherError	Comm fault with mainboard
0xA00008	GroundFailure	Ground fault
0xA00009	OtherError	Cable connector over-temperature fault
0xA0000A	OtherError	Insulation fault
0xA0000B	OtherError	Meter data error
0xA0000D	OtherError	Relay error
0xA0000F	OtherError	Insulation board fault
0xA00010	OtherError	Insulation board offline
0xA00013	OtherError	Discharge over-time
0xA00014	OtherError	Pre-charge over-time
0xA00016	OtherError	PLC board offline
0xA00035	OtherError	gun temperature increases rapidly
0xA00037	OtherError	Two contact sensors short
0xA00038	OtherError	Two contact sensors open
0xA0003A	OtherError	Positive contact over temperature
0xA0003B	OtherError	Negative contact over temperature
0xA00101	OtherError	EV disconnected
0xA00102	OtherError	EV communication interrupted
0xA00103	OtherError	EV Communication overtime (ParaDisReq not received from EV)
0xA00104	OtherError	EV Communication overtime (CabCheckReq not received from EV)
0xA00105	OtherError	Charge parameters mismatch
0xA00106	OtherError	EV charge complete
0xA00107	OtherError	Stop when the set charging power is reached
0xA00108	OtherError	Stop when the set charging time is reached
0xA00110	OtherError	EV initial communication not received
0xA00113	OtherError	connector PE Short failure
0xA00201	OtherError	Local
0xA00202	OtherError	Other reasons
0xA00203	OtherError	Remotely stop
0xA00204	OtherError	Soft reset
0xA00205	OtherError	Unlock command
0xA00207	OverVoltage	Output over-voltage fault
0xA00209	OverCurrentFailure	Output over-current fault
0xA0020B	OtherError	Web/Screen stop
0xA0020C	OtherError	Card stop
0xA0020D	OtherError	Charger power allocation timeout
0xA0020F	OtherError	Power cabinet offline
0xA00210	OtherError	Cable reverse connection fault

Cybersecurity

For more information about cybersecurity, refer to *Schneider StarCharge Fast 720 Cybersecurity Guide*.

Schneider Electric

35 rue Joseph Monier
92500 Rueil Malmaison – France
Phone: +33 (0) 1 41 29 70 00
www.se.com

As standards, specifications, and designs change from time to time, please ask for confirmation of the information given in this publication.

© 2025-2026 Schneider Electric. All rights reserved.

Rev. D3999127_01

D3999127