


# MAX9 PRO



Chassis style distribution boards for light commercial and large residential  
**Catalogue**

**CLIPSAL**<sup>®</sup>

[clipsal.com/MAX9](https://clipsal.com/MAX9)

**Schneider**  
Electric<sup>™</sup>

# MAX9 PRO

Clipsal's latest innovation, the **MAX9 PRO**, is a chassis-style metal distribution board that sets new standards in installation speed, professionalism, flexibility, and performance.

**MAX9 PRO** is designed to meet the electrical distribution requirement of light commercial and large residential installations. Available in 24, 36, 48, 60, and 72 pole chassis board with 160 A and 250 A switch options and compatible with the **MAX9** 6kA circuit protection devices.





## Light Commercial



### Small Office Buildings

Small buildings need **versatile** and **compact** distribution boards to suit limited office spaces. It should also be able to handle various electrical loads and integrate **surge protection devices** to safeguard office equipment and systems.

### Small Warehouses

Small warehouses require distribution boards with **robust design** to withstand industrial environments whilst having **generous wiring space** and being modular for **easy upgrades and maintenance**. It should be able to accommodate various electrical loads such as general power, lighting, small industrial machines, motors, and controls.



### Cafes and Restaurants

Cafes need **efficient power distribution** for kitchen equipment, lighting, and customer areas. The distribution boards should fit within **limited spaces** while providing load control and **energy monitoring solutions** to reduce operating costs.

### Retail Stores

Retail stores require distribution boards that provide minimum downtime for lighting, security, and point-of-sale systems. It should enable **integration of energy metering** to monitor and reduce energy consumption. The design ergonomics should be user-friendly for quick and **efficient operation and maintenance**.





## Medical and Dental Care Facilities

Medical care facilities require highly reliable and safe power distribution systems to **protect critical medical equipment**. It should enable integration of backup power sources whilst providing **10 mA residual current protection** for patient areas.

## Aged Care Facilities

Aged care facilities need distribution boards that require **additional capabilities** in circuit protection. It should enable simple **integration of AFDDs** and **emergency lighting test kits** for buildings with more vulnerable residents.



## Residential



## Large Homes

For large homes, the distribution boards should be capable of handling more than **100 A** to support current and **future energy** intensive appliances including HVAC systems, water heating, cooking, and **electric vehicle charging**.

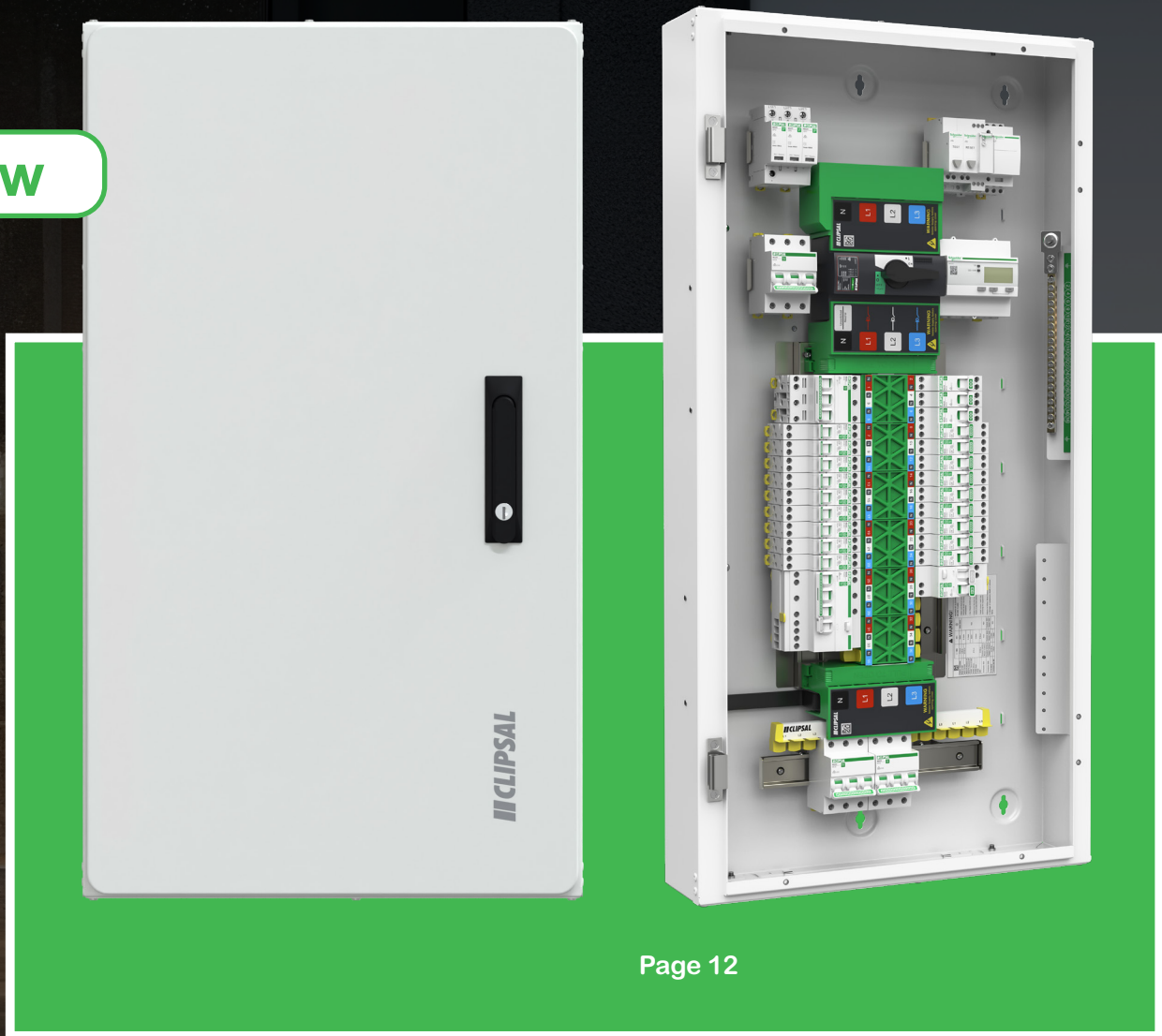
## Apartments

Common areas in apartment buildings, such as lobbies, hallways, and recreational spaces, require stable power distribution feasible with integration of **energy metering** solutions to help **comply with building codes**.



# Introducing **MAX9 PRO** Distribution Boards

New



Page 12

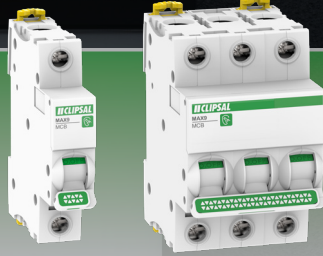
Light duty distribution board for light commercial and large residential installations.

# MAX9 Circuit Protection Devices

New



Phase Neutral MCB  
Page 16



MCB\* Page 18



RCBO Page 19



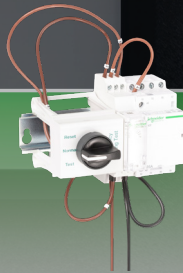
AFDD Page 20



SPD Page 20



Metering Page 20



Emergency  
Lighting Kits Page 20



Contactors Page 21

Circuit protection devices with 6 kA breaking capacity, easy to install with MAX9 PRO chassis distribution boards and MAXBAR DIN comb busbar systems.

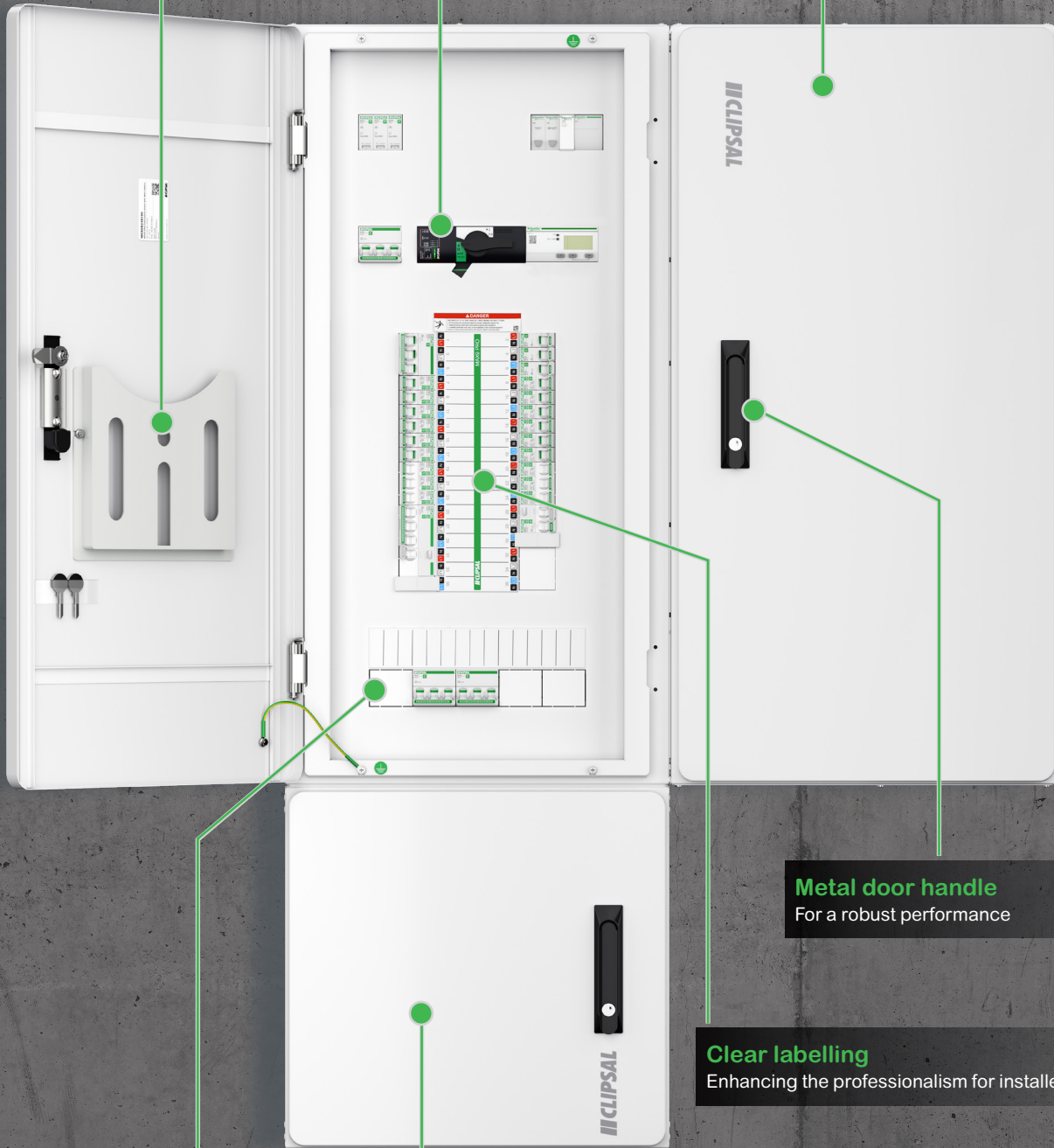
\* Suitable with DIN rail installation only

# MAX9 PRO - Discover MAX Features

**Switch and MCB incomer options**  
Bringing flexibility to the application

**Modern design with rounded corners**  
Seamlessly blending into its environment

**Schedule holder**  
To secure the circuit schedule



**Metal door handle**  
For a robust performance

**Clear labelling**  
Enhancing the professionalism for installer

**Knockout and pole fillers**  
Enhancing the professionalism for installer

**Modular or stackable extension box**  
For easy DIN device installation up to 36 modules



**Tap off points for SPD protection**  
For ease of installation

**Unswitched neutral incomer**  
Make neutral connection easier

**Large incomer cable space**  
Easier to connect larger mains cables

**Provision to mount DIN devices**  
Supports variety of applications

**Fully shrouded design**  
Additional protection by isolating from active conductors

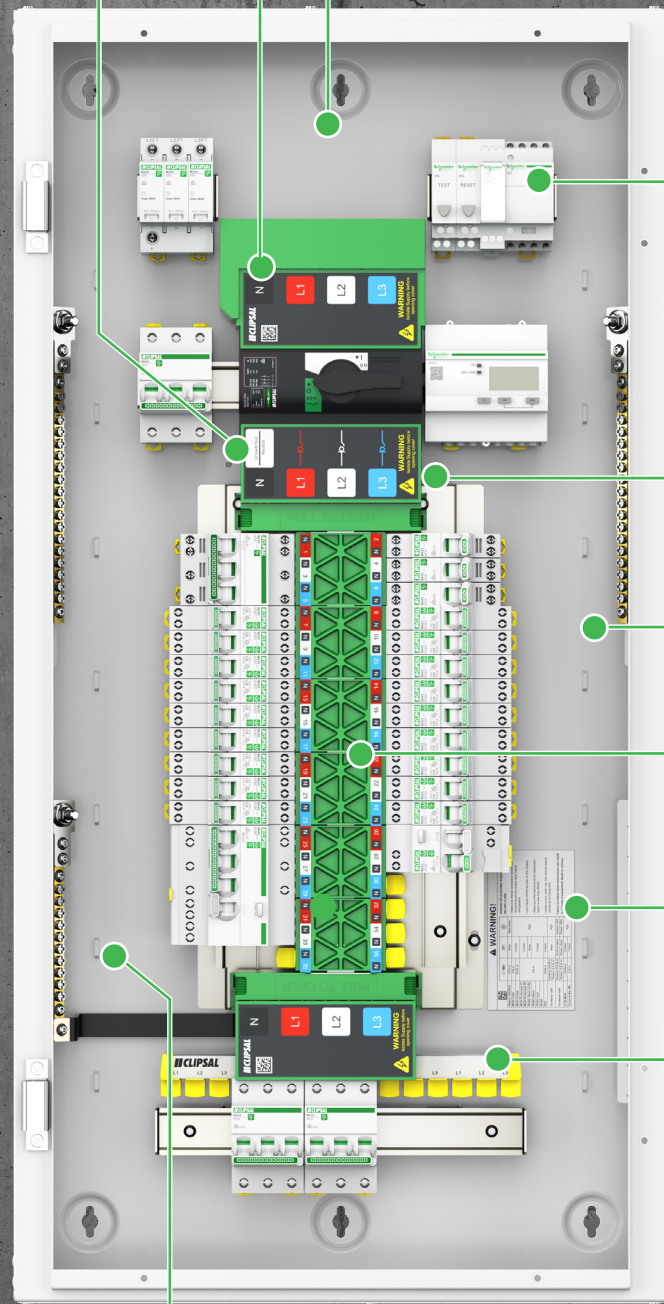
**Plenty of wiring space**  
Easy installation and routing of outgoing cables

**Phase neutral chassis**  
Faster installations with MAX9 RCBO without the need for line side neutral cabling

**Torque labels**  
Clear guidance for installation and maintenance

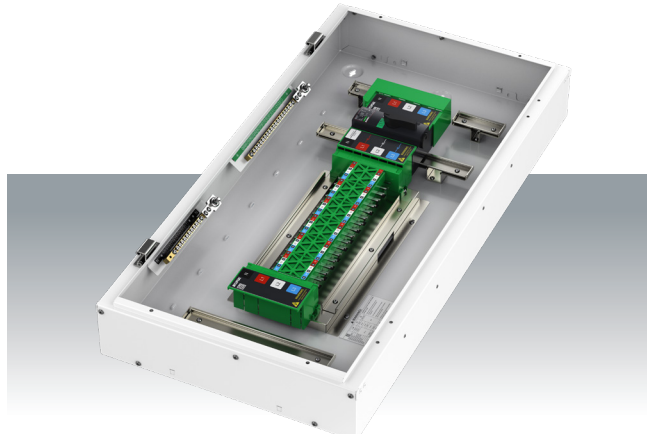
**Comb busbar Kit**  
For higher rating MCB's (50 A, 63 A)

**Cable tie points**  
Neat and professional wiring



# MAX9 PRO - Embrace MAX Benefits

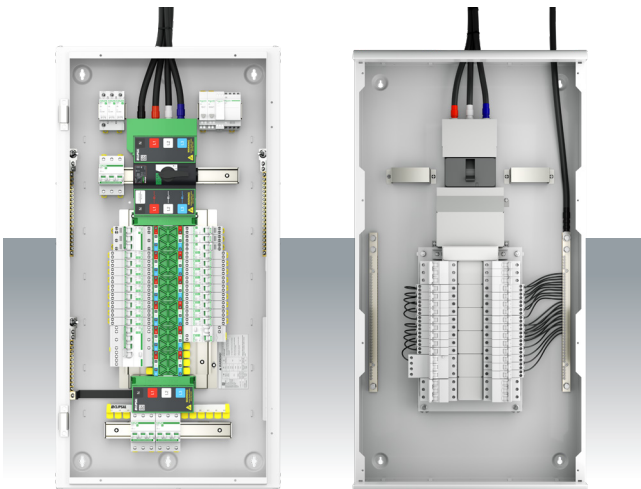
## MAX Professionalism



Contemporary design inspired by modern aesthetics with innovative phase and neutral distribution chassis.

An angled neutral and earth bar provides better access to wiring. The split neutral and earth bar enables neater wiring.

## MAX Speed



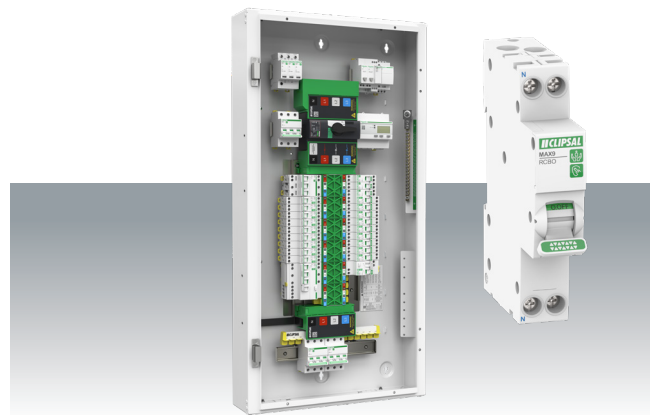
MAX9 PRO  
Distribution board

Traditional  
Distribution board

**4x** Faster  
Installation

MAX9 PRO offers installation speed up to **four times** faster than traditional chassis distribution boards, thanks to the phase and neutral distributed chassis, eliminating the need for neutral wiring on RCBOs.

## MAX Space



**2x** More Space

MAX9 RCBOs with **no neutral flying leads** offers more wiring space inside the board.

The optimised position of **incomer switch** and **DIN rails** maximizes space utilisation within the board, providing **2 times** more DIN space for device installations.

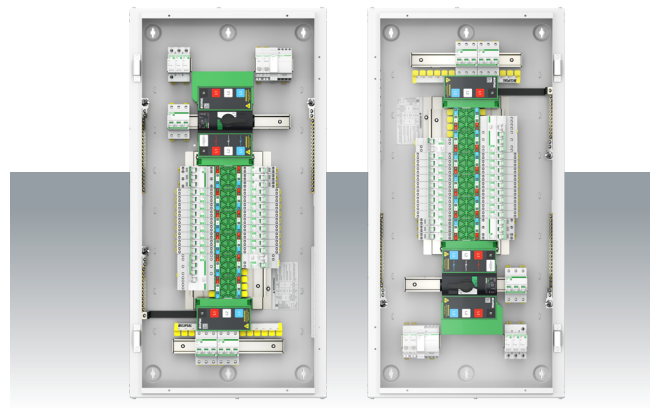
## MAX Flexibility



A reversible door assembly allows for flexible installation, accommodating different room layouts and user preferences.



A modular extension box offers customizable system expansion to meet application needs.

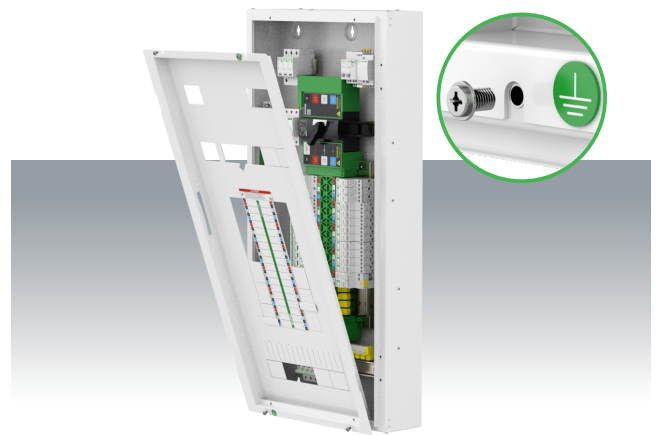


A distribution board with dual key holes and vertically aligned labels allows top and bottom feed installations.

## MAX Ease



Stocking is now made easy with just one range of MAX9 devices compatible across both Light commercial and residential applications.



Easy to remove and install cover with U-shape cut out for screw fixings.

# MAX9 PRO - Distribution Board



**MX9DB24S160**



**MX9DB24S160**

## Nomenclature

**MX9**

Range

**MX9:** MAX9 PRO

**DB**

Product Type

**DB:** Distribution Board

**24**

Number of Ways

**24:** 24 Ways  
**36:** 36 Ways  
**48:** 48 Ways  
**60:** 60 Ways  
**72:** 72 Ways

**S**

Incomer Type

**S:** Switch

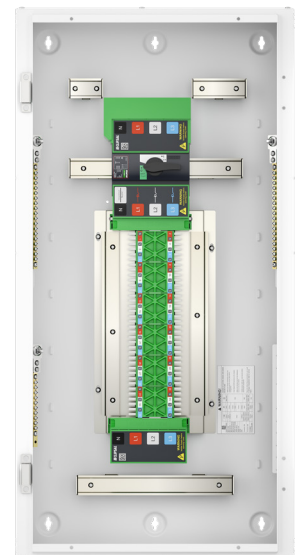
**160**

Switch Rating

**160:** 160 A  
**250:** 250 A

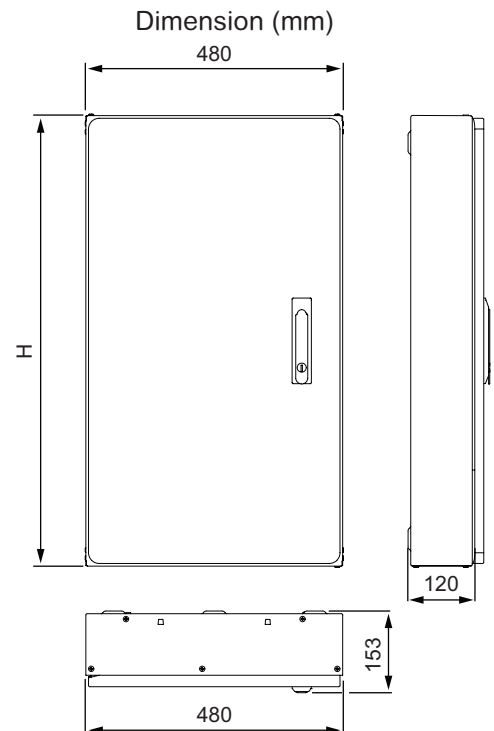
## Technical Specifications

MAX9 PRO	
Incomer switch current ratings	160 A, 250 A
Rated short time withstand current (Icw)	25 kA at 100 mSec
Chassis compatible devices	MAX9 RCBO, AFDD, Phase Neutral MCB
Chassis number of poles	24, 36, 48, 60, and 72
DIN modules	Total 31 (16 on top, 15 on bottom)
Degree of protection	IP30 (door closed) IK09
Lockable door	Yes with 2 x CL001 keys
Color	White (RAL 9003)
Enclosure material	Powdercoated Galvanised Steel
Material thickness	1.2 mm
Neutral and Earth Bar	<ul style="list-style-type: none"> <li>• Cross section: 12 mm x 9 mm</li> <li>• Tunnel size : 7 mm diameter (25 mm<sup>2</sup> cable)</li> <li>• Main connection : M8 bolt connection</li> <li>• Rating : 250 A</li> </ul>
Standard compliance	AS/NZS 61439.3
Supports the compliance to wiring regulations	AS/NZS 3000
Accessories	Pole fillers Circuit schedule holder and schedule Chassis tooth covers



## Commercial References and Dimensions

Commercial References			Dimensions (mm)
No. of Ways	Rating		H
	160 A	250 A	
24	MX9DB24S160	MX9DB24S250	842
36	MX9DB36S160	MX9DB36S250	950
48	MX9DB48S160	MX9DB48S250	1058
60	MX9DB60S160	MX9DB60S250	1181
72	MX9DB72S160	MX9DB72S250	1289



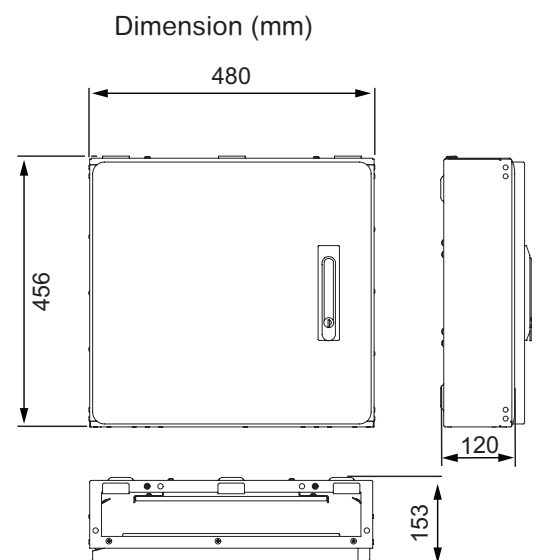
## Accessories

### Extension Box

Reference	Description
MX9DBE218	MAX9 PRO IP30 extension box 2 DIN rows, 36 ways

### Technical Specifications

MAX9 PRO - Extension Box	
DIN modules	36 way (18 modules in each row)
IP Rating	Door Closed: IP30
IK Rating	IK09
Material	1.2 mm Galvanised Steel Powdercoated
Color	RAL9003 white
Lockable door	Yes with 2 x CL001 keys
Compatible devices	DIN Devices
Accessories	Pole fillers



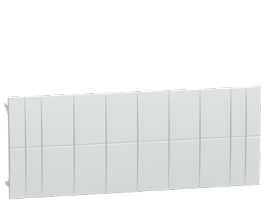
# MAX9 PRO - Distribution Board

## Other Accessories

Reference	Description
MX9DBGP	MAX9 PRO DB gland plates ( pack of 2 )
MX9DBCL001	MAX9 PRO DB spare door lock - CL001
MX9DBKCB	MAX9 PRO DB kit with 3 phase comb busbar 15 ways
MX9DBKC120	MAX9 PRO DB kit for incomer C120 MCB conversion up to 125 A
MX9EF8	MAX9 pole filler 6x1 modules wide, 4x1/2 modules wide
MX9PT112	MAX9 tooth cover for MAX9 PRO and MAXBAR busbars



**MX9PT112**



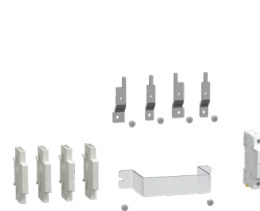
**MX9EF8**



**MX9DBCL001**



**MX9DBGP**



**MX9DBKC120**



**MX9DBKCB**

## Compatible LINK BARs for MAX9 PRO DB

Reference	Description
BP165C6	Link bar, 165 A, 6 hole, length 95 mm, 1 hexagon head
BP165C12	Link bar, 165 A, 12 hole, length 116 mm, 1 hexagon head
BP165C18	Link bar, 165 A, 18 hole, length 158 mm, 1 hexagon head
BP165C24	Link bar, 165 A, 24 hole, length 201 mm, 1 hexagon head
BP165D12	Link bar, 165 A, 12 hole, length 138 mm, 2 hexagon head
BP165D18	Link bar, 165 A, 18 hole, length 180 mm, 2 hexagon head
BP165D24	Link bar, 165 A, 24 hole, length 223 mm, 2 hexagon head



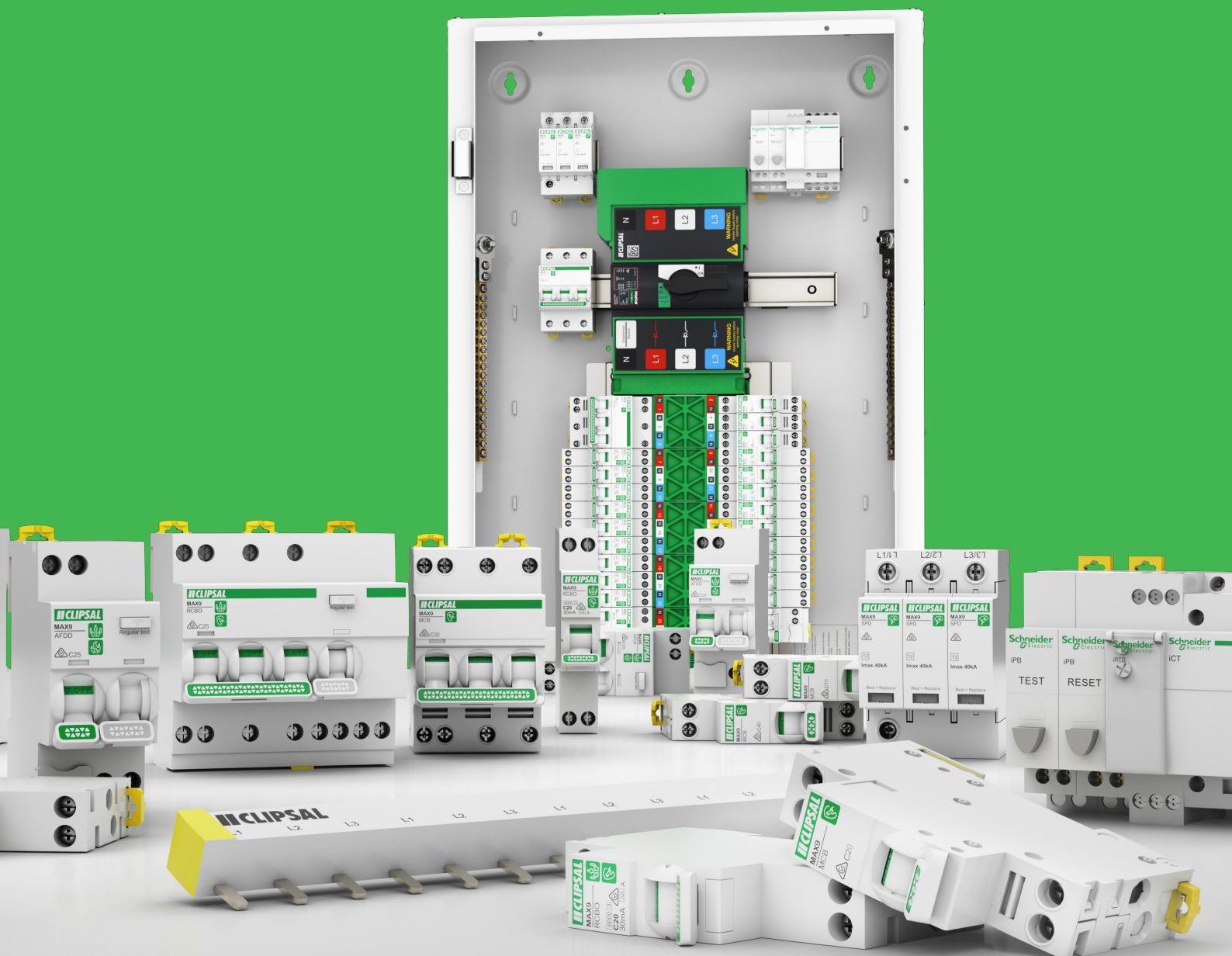
**BP165C12**



**BP165D12**

# MAX9

## Circuit Protection Devices



## Phase Neutral Miniature Circuit Breakers

### AS/NZS 60898.1

As per the above standards:

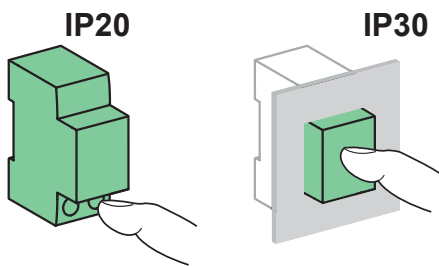
MCB combines the following functions:

- Circuit protection against short-circuit currents
- Circuit protection against overload currents
- Suitable for isolation



### Commercial References

MAX9 PRO MCB		
Type	1P+N	3P+N
Rating (In)	C curve	C curve
6 A	MX9MN106	MX9MN306
10 A	MX9MN110	MX9MN310
16 A	MX9MN116	MX9MN316
20 A	MX9MN120	MX9MN320
25 A	MX9MN125	MX9MN325
32 A	MX9MN132	MX9MN332
40 A	MX9MN140	MX9MN340
Width in 9-mm modules	2	6



### Technical Data

Main characteristics		
Voltage rating (Ue)	1P+N	240 Vac
	3P+N	240/415 Vac
Reference temperature	30 °C	
Operating frequency	50/60 Hz	
Insulation voltage (Ui)	1P+N	400 V for P-N
	3P+N	440 V for P-P 400 V for P-N
Rated impulse withstand voltage (Uimp)	4 kV	
Tripping Curve	C	
According to AS/NZS 60898.1		
Rated breaking capacity (Icn)	6000 A	
Service breaking capacity (Ics)	100% Icn	
Rated breaking and making capacity on a single pole (Icn1)	3000 A	
Additional characteristics		
Degree of protection	Device only	IP20
Endurance (O-C)	Electrical	10000 cycles
	Mechanical	20000 cycles
Pollution degree	2	
Overvoltage category	III	
Tropicalisation as per IEC 60068-2-30	Severity B (relative humidity 95% at 55°C)	
Operating temperature	-25...+70 °C	
Storage temperature	-40...+85 °C	

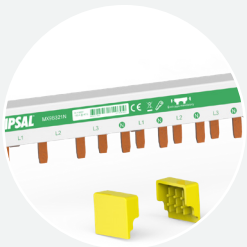




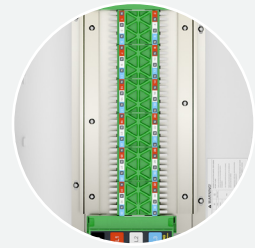
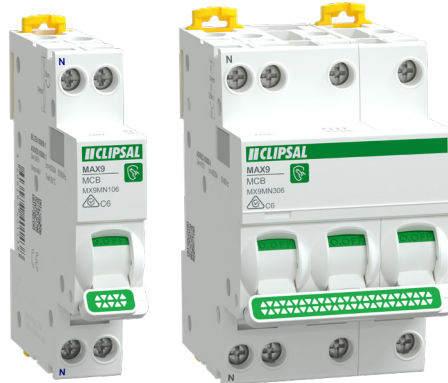
**Active and neutral distribution**  
Compact 1 and 3 module device



**Positive contact indication**  
Bring visibility on contact closing and opening

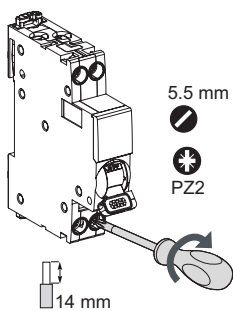


**MAXBAR compatible**  
Supports faster installation



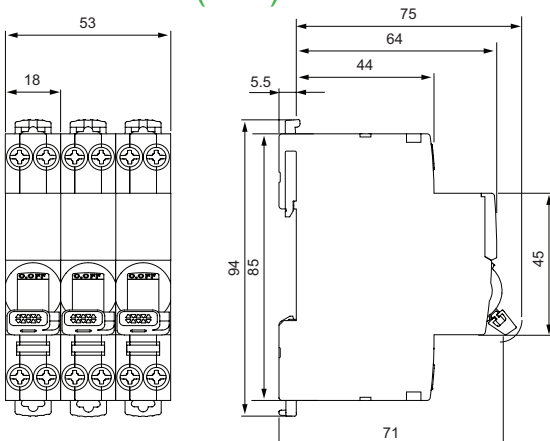
**MAX9 PRO chassis compatible**  
Supports faster installation

## Connection



Type	Rating	Tightening Torque	Copper Cables	
			Rigid	Flexible or with ferrule
Max9 Pro Phase and neutral MCB	6-40 A	2 N.m 	 1-16 mm <sup>2</sup>	 1-10 mm <sup>2</sup>

## Dimension (mm)



## Weight (g)

MCB	
Type	MAX9
1P+N	122
3P+N	345

**Note:** Approximate weight.

## Miniature Circuit Breakers - Phase only

### 1-Pole, 1-Module, C-Curve, 240 V

Catalogue No.	Current rating
MX9MC102	2 A
MX9MC104	4 A
MX9MC106	6 A
MX9MC110	10 A
MX9MC116	16 A
MX9MC120	20 A
MX9MC125	25 A
MX9MC132	32 A
MX9MC140	40 A
MX9MC150	50 A
MX9MC163	63 A



MX9MC1xx

DIN

### 2-Pole, 2-Module, C-Curve, 415 V

Catalogue No.	Current rating
MX9MC206	6 A
MX9MC210	10 A
MX9MC216	16 A
MX9MC220	20 A
MX9MC225	25 A
MX9MC232	32 A
MX9MC240	40 A
MX9MC250	50 A
MX9MC263	63 A



MX9MC2xx

DIN

### 3-Pole, 3-Module, C-Curve, 415 V

Catalogue No.	Current rating
MX9MC306	6 A
MX9MC310	10 A
MX9MC316	16 A
MX9MC320	20 A
MX9MC325	25 A
MX9MC332	32 A
MX9MC340	40 A
MX9MC350	50 A
MX9MC363	63 A



MX9MC3xx

DIN

# RCBO

## 1P+N, Slim 1-Module, C-Curve, 240 V

A-type, 30 mA non delayed

Catalogue No.	Current Rating
MX9R3106	6 A
MX9R3110	10 A
MX9R3116	16 A
MX9R3120	20 A
MX9R3125	25 A
MX9R3132	32 A

A-type, 10 mA non delayed

Catalogue No.	Current Rating
MX9R1110	10 A
MX9R1116	16 A
MX9R1120	20 A

## 1P+N, 2-Module, C-Curve, 240 V

A-SI type, 30 mA, non-delayed

Catalogue No.	Current Rating
MX9R3210S	10 A
MX9R3216S	16 A
MX9R3220S	20 A
MX9R3225S	25 A
MX9R3232S	32 A

A Type, 30 mA non-delayed

Catalogue No.	Current Rating
MX9R3210	10 A
MX9R3216	16 A
MX9R3220	20 A
MX9R3225	25 A
MX9R3232	32 A
MX9R3240	40 A

## 3P+N, 5-Module, C-Curve, 415 V

A Type, 30 mA non-delayed

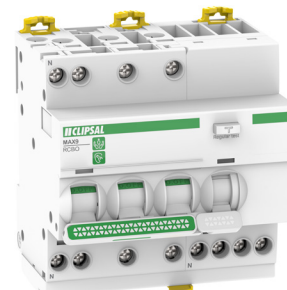
Catalogue No.	Current rating
MX9R3510	10 A
MX9R3516	16 A
MX9R3520	20 A
MX9R3525	25 A
MX9R3532	32 A
MX9R3540	40 A



MX9R31xx



MX9R32xxS



MX9R35xx



# MAX9 Circuit Protection Devices

## Surge Protection Device – SPD

Catalogue No.	Description
<b>MX9SP140</b>	Surge Arrestor, 1P, I <sub>max</sub> 40 kA
<b>MX9SP340</b>	Surge Arrestor, 3P, I <sub>max</sub> 40 kA
<b>MX9SP40C</b>	Replacement Cartridge 1P I <sub>max</sub> 40 kA



**MX9SP140**

**MX9SP340**

DIN

## Arc Fault Detection Device with RCBO

Catalogue No.	Current rating
<b>MX9A3206</b>	6 A
<b>MX9A3210</b>	10 A
<b>MX9A3216</b>	16 A
<b>MX9A3220</b>	20 A
<b>MX9A3225</b>	25 A



**MX9A32xx**

MAX9  
PRO

+

DIN

## Emergency Lighting Test Kit

Catalogue No.	Description
<b>PBELKIT2PB</b>	2 N/C with push button on DIN
<b>PBELKIT4PB</b>	4 N/C with push button on DIN
<b>PBELTS</b>	Green TRAFFOLYTE MARKER 15 mmx75mmx1.5mm



**PBELKIT2PB**

DIN

## Energy Meter

Current Input/ Wh Accuracy	Catalogue No. (iEM3000 series Energy meters)
<b>A9MEM3210</b>	iEM3210 energy meter with pulse output
<b>A9MEM3215</b>	iEM3215 multi-tariff energy meter
<b>A9MEM3250</b>	iEM3250 energy meter & electrical parameter plus Modbus RS-485 comm port
<b>A9MEM3255</b>	iEM3255 advanced multi-tariff energy meter & electrical parameter plus Modbus RS485 comm port
<b>A9MEM3265</b>	iEM3265 advanced multi-tariff energy meter & electrical parameter plus BACnet MS/TP comm port
<b>A9MEM3275</b>	iEM3275 advanced multi-tariff energy meter & electrical parameter plus LON TP/FT-10 comm port



**A9MEM32xx**

DIN

# Contactors

1/2-Pole, 1 Module, 240 V

Catalogue No.	AC7a	AC6b	Ue	Uc	Contact N/O	Contact N/C	Consumption Holding
<b>MX9C112510</b>	25	8.5 A	240	240	1	-	2.7 VA
<b>MX9C112520</b>	25	8.5 A	240	240	2	-	2.7 VA
<b>MX9C112511</b>	25	8.5 A	240	240	1	1	2.7 VA
<b>MX9C212510</b>	25	8.5 A	240	24	1	-	3.8 VA
<b>MX9C212520</b>	25	8.5 A	240	24	2	-	3.8 VA



4-Pole, 2 Modules, 415 V

Catalogue No.	AC7a	AC6b	Ue	Uc	Contact N/O	Contact N/C	Consumption Holding
<b>MX9C122540</b>	25	8.5 A	415	240	4	-	4.6 VA
<b>MX9C122522</b>	25	8.5 A	415	240	2	2	4.6 VA



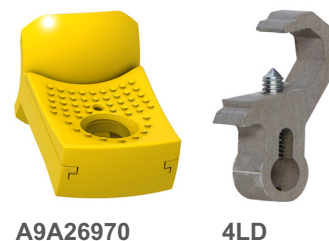
4-Pole, 3 Modules, 415 V

Catalogue No.	AC7a	AC6b	Ue	Uc	Contact N/O	Contact N/C	Consumption Holding
<b>MX9C136340</b>	63	20 A	415	240	4	-	6.5 VA



## Locking Device

Catalogue No.	Description
<b>4LD</b>	Locking device for MAX9 circuit breakers, isolating switches and RCDs (lockable in ON and OFF position). Suits padlocks with shafts up to 6 mm.
<b>A9A26970</b>	Locking device for MAX9 devices except RCBO SLIM, lockable in ON or OFF position, with padlock diameter up to 6 mm.
<b>26970</b>	Locking device for MAX9 RCBO SLIM, lockable in ON or OFF position, with padlock diameter up to 8 mm.

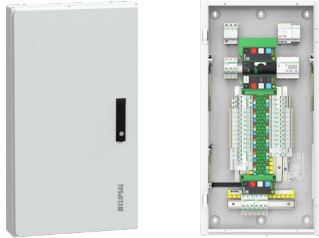


\*Locking in ON position does not prevent tripping of the circuit breaker in the event of fault.

# Quick Selection Guide for Distribution Boards

Light Commercial and Large Residential

## MAX9 PRO Distribution Boards



**MAX9 PRO:** Light duty distribution board for light commercial and large residential installations.

## MAX9 Circuit Protection



**MAX9 RCBOs** with 6 kA breaking capacity, easy to install with MAX9 PRO Chassis and MAXBAR DIN comb busbar systems.

Available through:  
- Wholesaler (as stock item)

Medium and Large Commercial  
+ Industrial Applications

## Acti9 MB MD Distribution Boards



**Acti9 MB MD:** Heavy duty distribution board for commercial and industrial applications, for indoor or outdoor use.

## Acti9 Circuit Protection



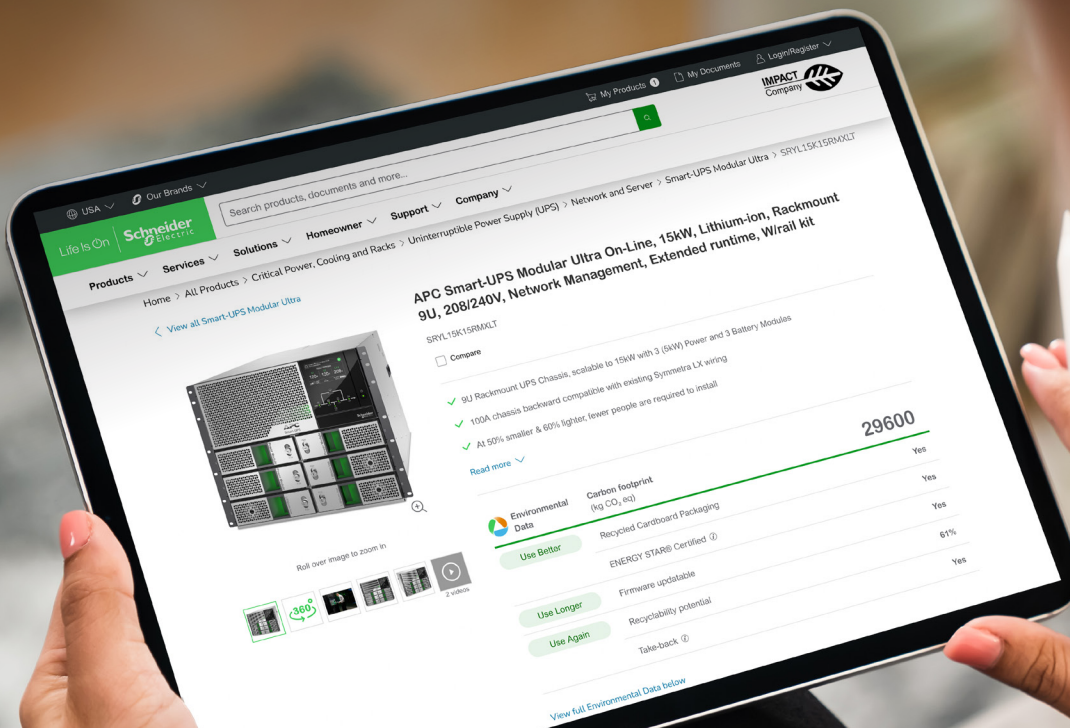
**Acti9 RCBOs** with up to 10 kA breaking capacity, easy to install with Acti9 distribution board and chassis systems. Additionally, Acti9 systems deliver selectivity, cascading and co-ordination with upstream MCBs or MCCBs.

Available through:  
- Wholesaler  
- Panel builder  
- Schneider Electric Custom Distribution Boards  
- Schneider Electric Flex-Select Tool

	MAX9 PRO Distribution Boards	Acti9 MB MD Distribution Boards
IP rating	IP30	IP42 - IP56 - IP66
No of chassis poles	Up to 72 modules	Up to 96 modules
Chassis type	Phase and neutral	Phase only
Chassis pitch	9 mm	18 mm, 27 mm, 18+27 mm hybrid
Enclosure construction	1.2 mm galvanized steel	1.6 mm steel
Additional DIN space at top	16 modules	MB - 18 modules, MD - 14 modules
Additional DIN space at bottom	15 modules	-
Width x Depth of board	480 mm x 153 mm	580 mm x 225 mm
Color	White	Grey or orange



# Environmental Data Program

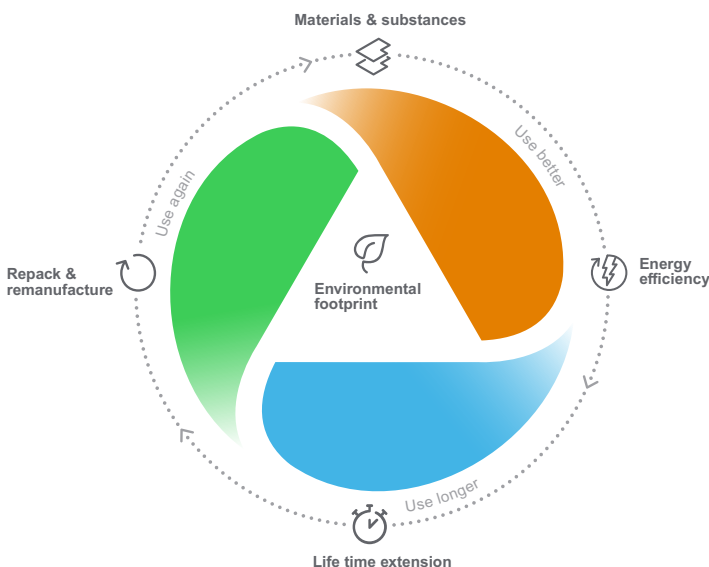


## Next-level transparency for better-informed product choices

The Environmental Data Program is a framework for how we measure, categorize, and compare the environmental attributes and footprint of our products.

Using a rigorous, fact-based methodology, the program provides environmental data from across the product lifecycle.

### Five data categories across the product lifecycle



**Use Better:** How sustainable a product is, including environmental footprint, materials and substances, packaging, and energy efficiency.

**Use Longer:** How a product's life time can be effectively extended in terms of repairability and updatability.

**Use Again:** How a product can be reused, from dismantling and remanufacturing to recyclability and manufacturer take back.

With this transparent, verified data, customers and partners are empowered to make conscious environmental choices and accurately evaluate and report on sustainability performance.

All our hardware offers have an associated environmental data available on se.com product pages.



Learn more about the **Environmental Data Program**

# GO TO THE MAX

For more information about MAX9 and other Clipsal products, contact your local Clipsal and Schneider Electric Representative, electrical wholesaler, or visit: [clipsal.com/MAX9](https://clipsal.com/MAX9)

Schneider Electric (Australia) Pty. Ltd.  
33-37 Port Wakefield Road,  
Gepps Cross, South Australia, 5094  
[www.clipsal.com](https://www.clipsal.com)

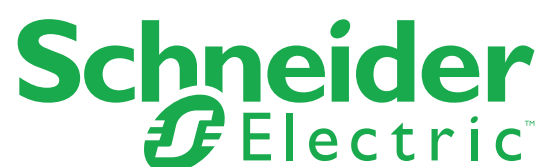
Customer Care Centre  
Tel: 13 73 28  
Email: [customercare.au@se.com](mailto:customercare.au@se.com)  
Website: [clipsal.com/contactus](https://clipsal.com/contactus)

04-2026  
CX909000

© 2026 Schneider Electric. All Rights Reserved. Clipsal are trademarks of Schneider Electric (Australia) Pty Ltd.



[clipsal.com/MAX9](https://clipsal.com/MAX9)





For more information about MAX9 and other Clipsal products, contact your local Clipsal and Schneider Electric Representative, electrical wholesaler, or visit: [clipsal.com/MAX9](https://clipsal.com/MAX9)

Schneider Electric (Australia) Pty. Ltd.  
33-37 Port Wakefield Road,  
Gepps Cross, South Australia, 5094  
[www.clipsal.com](https://www.clipsal.com)

Customer Care Centre  
Tel: 13 73 28  
Email: [customercare.au@se.com](mailto:customercare.au@se.com)  
Website: [clipsal.com/contactus](https://clipsal.com/contactus)

04-2026  
CX909000

© 2026 Schneider Electric. All Rights Reserved. Clipsal are trademarks of Schneider Electric (Australia) Pty Ltd.



[clipsal.com/MAX9](https://clipsal.com/MAX9)

