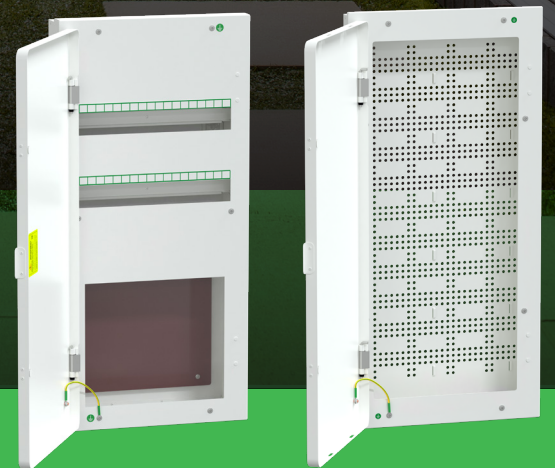




Resi9 Meter Board and Data Board

Combined Metallic Enclosures for Residential
Catalogue 2026



pdl.co.nz/resi9

Life Is On

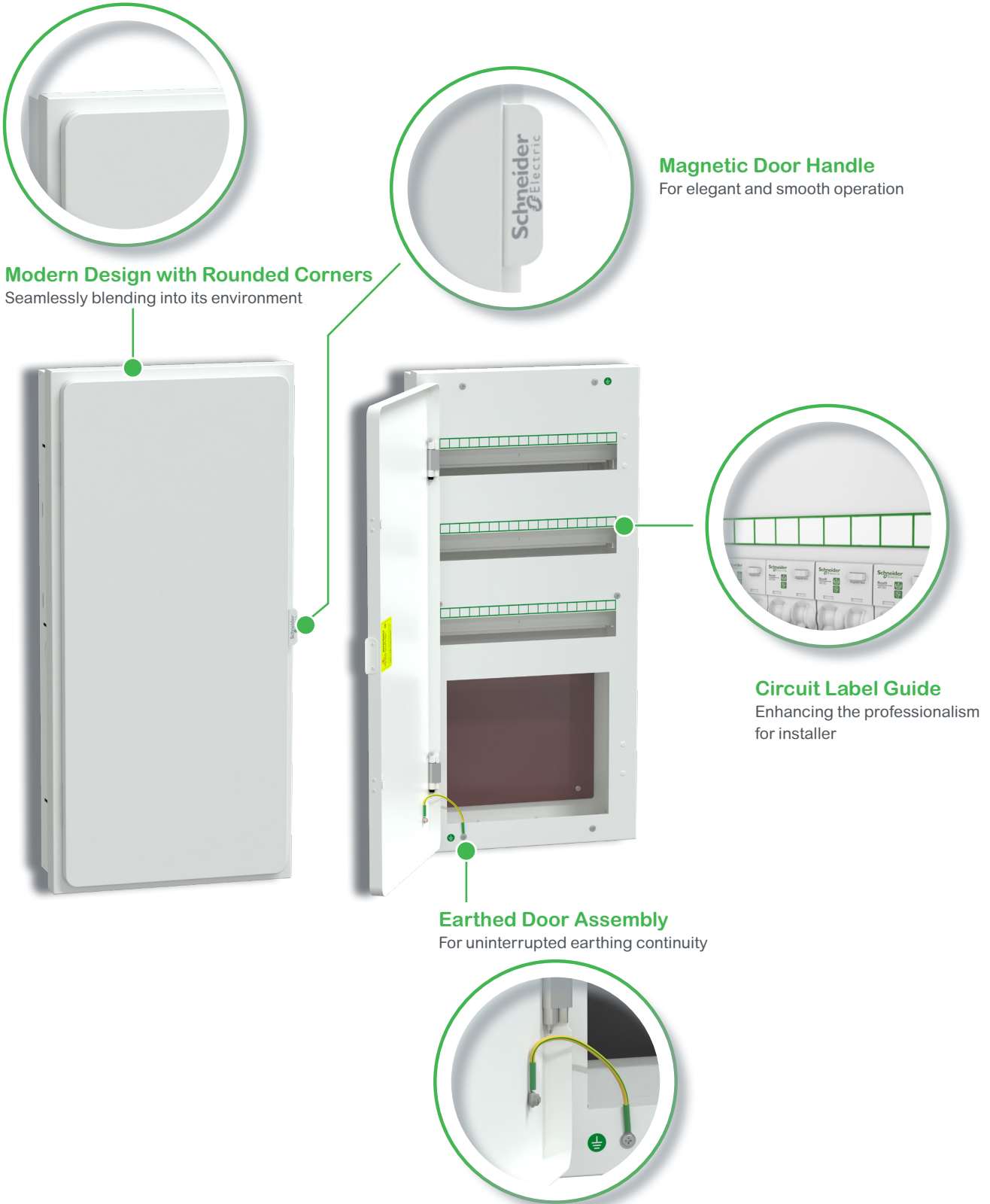
Schneider
Electric

Resi9 - Discover MAX Features

The Resi9 Metallic Combined Meter Board and Data Board solution is purpose-built to meet the evolving electrical distribution needs of modern New Zealand homes.

Featuring a sleek, contemporary design, both the meter board and data board offer a consistent aesthetic that adds a touch of sophistication to your installations. Resi9 metal enclosures are more than just good looking, they are engineered for performance, along with smart installation features.

Together, these deliver a professional, flexible, and a future-ready switchboard solution that ties up seamlessly with our trusted Resi9 circuit protection range.



Modern Design with Rounded Corners
Seamlessly blending into its environment

Magnetic Door Handle
For elegant and smooth operation

Circuit Label Guide
Enhancing the professionalism for installer

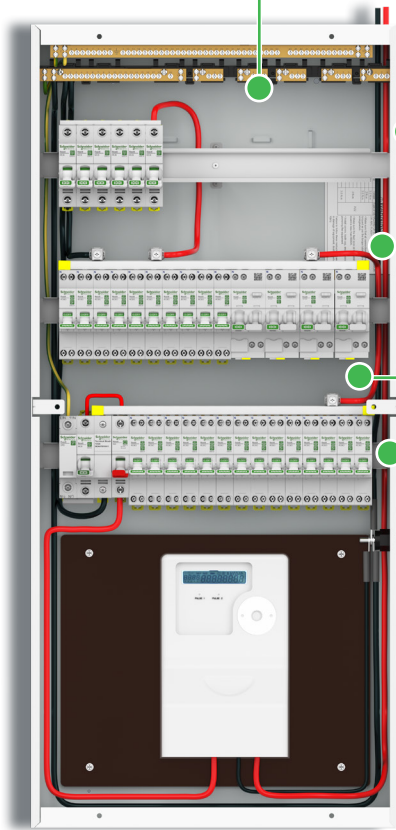
Earthed Door Assembly
For uninterrupted earthing continuity



Cable Tie Points
For clean and neat cable routing



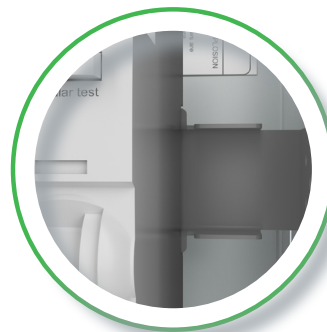
Pull Out Tabs and Slotted Fixing Hole
For finer alignments and adjustments with finished wall



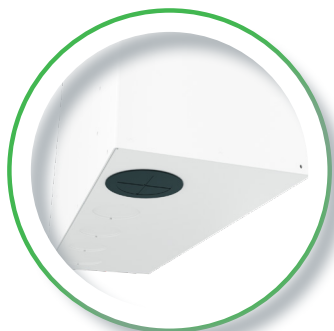
Torque Labels
For clear guidance for installation and maintenance

Plenty of Wiring Space
For easy installation and routing of outgoing cables

DIN Rail Stopper
For accurate alignment for devices with escutcheon



Knockouts and Grommets
Enhancing the professionalism for installer



Disclaimer: Energy meter shown for representation purpose only.

MAX Professionalism

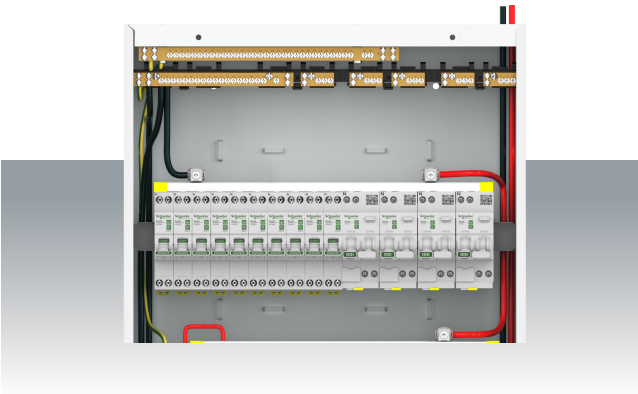


Modern and consistent **aesthetics** across the offer.



Separate **packaging** for **door** and **escutcheon** makes storage and van stocking easy.

MAX Performance



- **100 A** rated Neutral and Earth terminal bars for solid capacity and performance.
- **100 A** rated MAXBAR, that simplifies installation while maximising overall system capability.

MAX Space



- **150 mm** space between rows allows for **neater** and **easier** cabling.
- **24M** wide board designed to accommodate two meters or auxiliary devices.
- **Spacious Data board** which can comfortably accommodate all data technology needs.

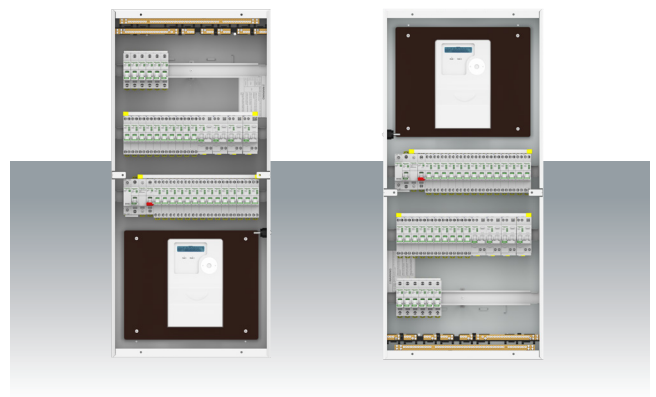
MAX Flexibility



Left or right position of Neutral stud allowing flexibility.



Reversible door assembly allows for flexible installation, accommodating different room layouts and user preferences.



Versatile installation with bottom and top meter mounting options.

Disclaimer: Energy meter shown for representation purpose only.

MAX Ease



Stocking is now made easy with a comprehensive Resi9 system covering all your residential circuit protection needs.



Plenty of knock-outs and GPO cut-outs for easy and hassle-free installation.

Combined Meter Board

Resi9 Metallic Meter Boards are purpose-built for residential applications and available in 36, 54, and 72 module variants. These flush-mounted enclosures feature 100 A-rated busbars and terminal bars.

Designed for flexibility, the boards feature reversible board orientation, left or right door opening options and interchangeable neutral link position - making them perfect for any installation.

With plenty of knock-outs and generous internal space, Resi9 meter boards ensure a hassle-free installation and deliver a clean, professional finish.



R9HMB218FD



R9HMB218FD

Catalog Number Format and Legend

R9	H	MB	2	18	F	D
Range	Category	Sub category	Number of rows	Number of modules	Mounting	Depth
R9: Resi9	H: Enclosure	MB: Meter board	2: 2 row 3: 3 row	18: 18 modules per row 24: 24 modules per row	F: Flush	D: Deep

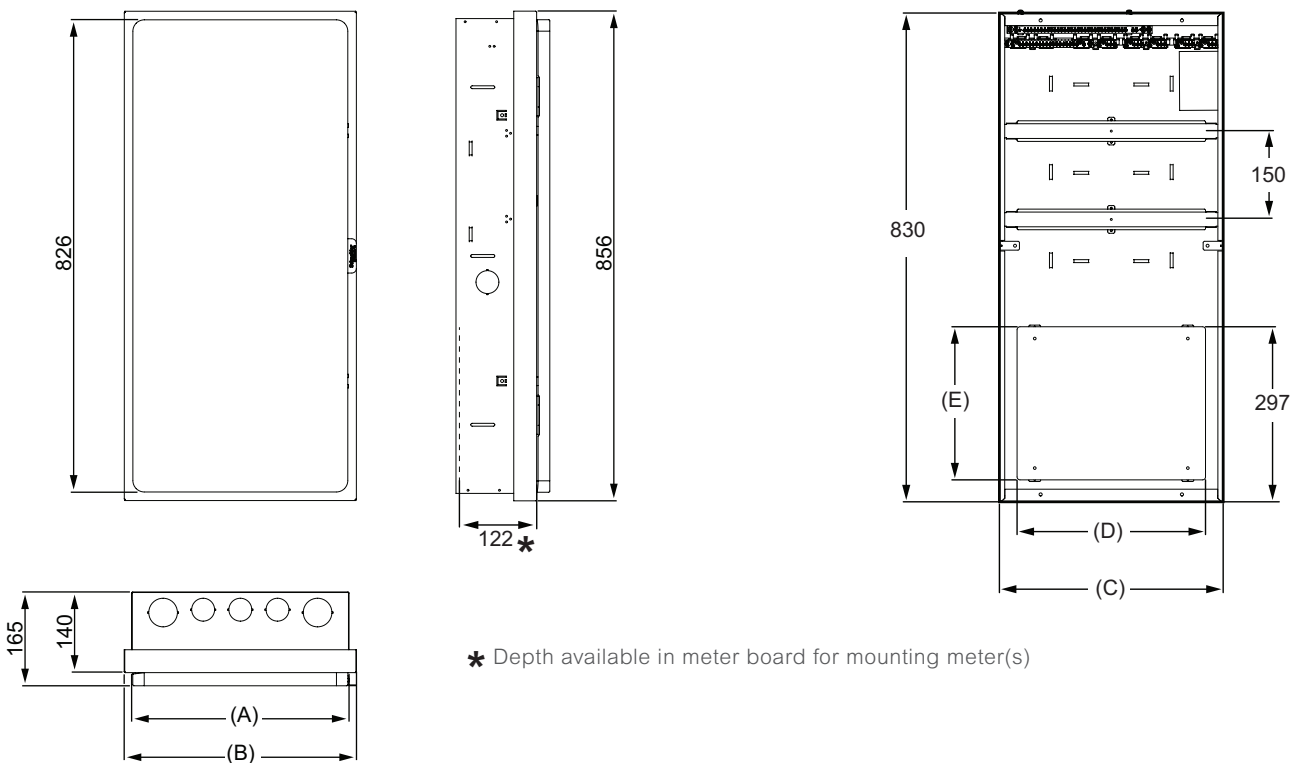
Commercial References

Catalogue no.	Description	No of rows	No of modules
R9HMB218FD	2 rows 18 modules flush deep	2	36
R9HMB318FD	3 rows 18 modules flush deep	3	54
R9HMB324FD	3 rows 24 modules flush deep	3	72

Technical Data

Main characteristics	Meter board
Rated current	100 A
Rated voltage	230 / 400 V
Rated insulation voltage	500 V
Material type	Powder Coated Steel
IP rating - door closed	IP2X
IK rating	IK07
Color	RAL9003 White
Space between DIN rails	150 mm
Insulation class	1
Pole filler supplied	2 nos. for R9HMB218FD 3 nos. for R9HMB318FD 4 nos. for R9HMB324FD

Dimensions (mm)



Meter board enclosure dimensions			
	A	B	C
R9HMB218FD	376	406	380
R9HMB318FD	376	406	380
R9HMB324FD	516	546	520

Meter panel dimensions		
	D	E
R9HMB218FD	320	260
R9HMB318FD	320	260
R9HMB324FD	480	260

Data Board

Resi9 Metallic Data Boards are designed to perfectly complement the meter board solution, offering a unified and modern aesthetic for residential projects.

The versatile perforation grid and spacious interior make it easy to mount a wide range of networking devices and accessories, while the ventilated door ensures optimal performance.

Featuring multiple GPO knock-outs designed to seamlessly accommodate PDL's Iconic and 600 series, Resi9 Data Boards provide a flexible, future-ready solution for all your home networking needs.

Commercial References

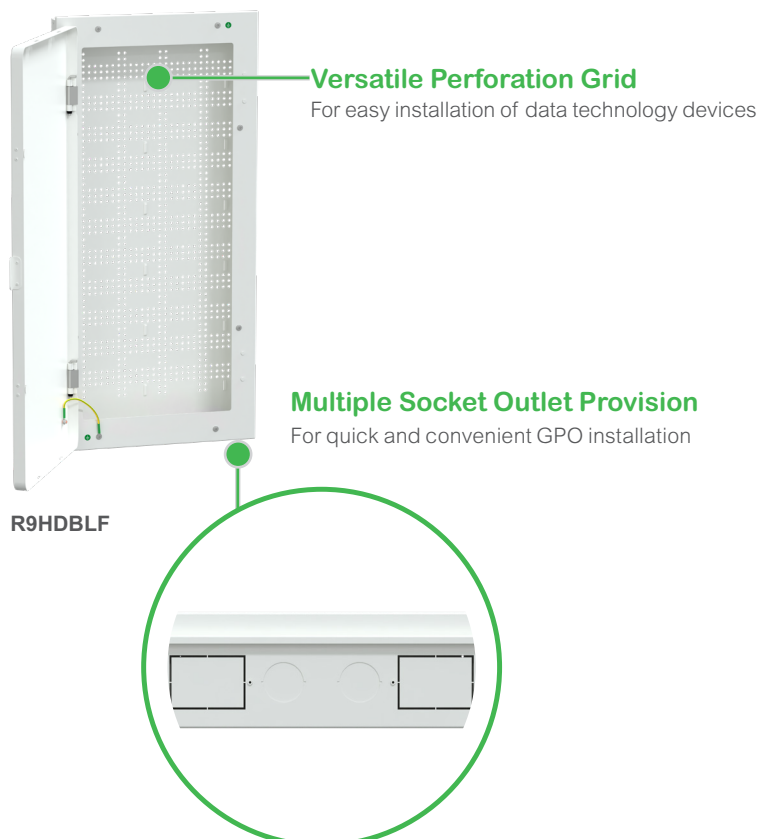
Catalogue no.	Description
R9HDBLF	Resi9 Data board large flush

Technical Data

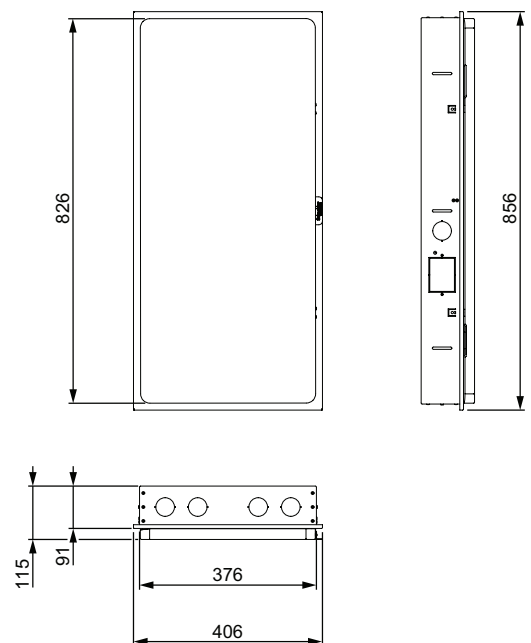
Main characteristics	Data board
Rated Insulation voltage	500 V
Material type	Powder Coated Steel
IP rating - Door closed	IP2X
IK rating	IK07
Color	RAL9003 White
Isolation class	1
Socket outlet provision	Yes
No. of socket outlets	4



R9HDBLF

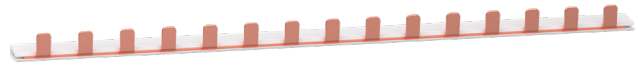


Dimensions (mm)





INSTALLED BY					INSTALLED BY				
PHONE No					PHONE No				
MAIN EARTH LOCATION					MAIN EARTH LOCATION				
RESIDUAL CURRENT DEVICE		RESIDUAL CURRENT DEVICE		RESIDUAL CURRENT DEVICE		MAIN ISOLATING SWITCH		ALARM	
RESIDUAL CURRENT DEVICE	RESIDUAL CURRENT DEVICE	RESIDUAL CURRENT DEVICE	RESIDUAL CURRENT DEVICE	RESIDUAL CURRENT DEVICE	RESIDUAL CURRENT DEVICE	MAIN SWITCH	MAIN SWITCH	MAIN SWITCH	ALARM
RESIDUAL CURRENT DEVICE	RESIDUAL CURRENT DEVICE	RESIDUAL CURRENT DEVICE	RESIDUAL CURRENT DEVICE	RESIDUAL CURRENT DEVICE	RESIDUAL CURRENT DEVICE	MAIN ISOLATING SWITCH	MAIN ISOLATING SWITCH	MAIN ISOLATING SWITCH	MAIN ISOLATING SWITCH
POWER1	POWER2	POWER3	POWER4	POWER5	GARAGE	AIR COND. 1	AIR COND. 2	AIR COND. 3	AIR COND. 4
POWER6	POWER7	POWER8	POWER9	POWER10	DISH WASHER	DISH WASHER	WALL OVEN	WALL OVEN	WALL OVEN
POWER11	POWER12	POWER13	POWER14	POWER15	LAUNDRY	LAUNDRY	UNDER FLOOR HEAT	UNDER FLOOR HEAT	PUMP
LIGHT1	LIGHT2	LIGHT3	LIGHT4	LIGHT5	SUB BOARD	SUB BOARD	HEATER	HEATER	WORK SHOP
LIGHT6	LIGHT7	LIGHT8	LIGHT9	LIGHT10	FRIDGE	FRIDGE	NIGHT STORE HEATER	NIGHT STORE HEATER	DRIVE WAY LIGHT
OVER VOLTAGE ARRESTER	OVER VOLTAGE ARRESTER	OVER VOLTAGE ARRESTER	SPA	SPA	POOL	POOL	HOT WATER OFF PEAK SWITCH		
RANGE	RANGE	RANGE	HOB	SAUNA	SMOKE DETECTOR	SMOKE DETECTOR	HOT WATER OFF PEAK SWITCH		
BED 1	BED 2	BED 3	MEN	PEN					
KITCHEN	KITCHEN	HOT WATER SYSTEM	HOT WATER SYSTEM	LOUNGE					



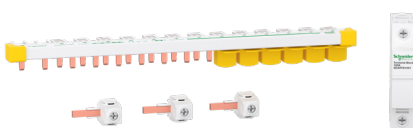
Accessories

Accessories

Resi9 Enclosure Accessories

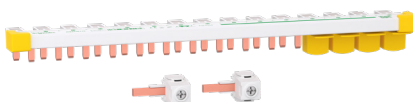
MAXBAR with Neutral Terminal Block and Accessories – For Rows with Main Incomer

Catalogue no.	Description	Phase	No of ways	Terminal block	Cable connector	Busbar tooth cap	Busbar end caps
R9XPN115N	1P+N , 15 ways with neutral block and accessories	1 phase	15	1	3	6	4
R9XPN121N	1P+N , 21 ways with neutral block and accessories	1 phase	21	1	3	6	4



MAXBAR with Accessories – For Rows without Main Incomer

Catalogue no.	Description	Phase	No of ways	Neutral terminal block	Cable connector	Busbar tooth cap	Busbar end caps
R9XPN115	1P+N , 15 ways with accessories	1 phase	15	0	2	4	4
R9XPN121	1P+N , 21 ways with accessories	1 phase	21	0	2	4	4



Busbar for RCCB and MCB Type Installations

Catalogue no.	Description	Phase	No of ways
R9XPH115	Resi9 pin type busbar 15M 100 A	1 phase	15



R9XPH115

Busbar Technical Data

Main characteristics	Comb busbar
Rated current	100 A
Rated voltage	230 V
Rated insulation voltage	500 V

MAXBAR Tooth Caps

Catalogue no.	Description
A9XPT620	Set of 20 busbar tooth caps



A9XPT620

Accessories

Pole Filler

Catalogue no.	Description
R9APF08	Resi9 pole filler 8 modules



R9APF08

Circuit Identification Labels

Catalogue no.	Description
R9ACIL	Resi9 circuit ID label sheet



R9ACIL

Earth Conductor Tag

Catalogue no.	Description
R9AECT	Resi9 earth conductor tag



R9AECT

Compatible Switched Socket Outlets (for Resi9 data board)

Catalogue no.	Description
PDL692BK	Double switched socket, 600 series, 10 A vertical 250 V (Black)
PDL692WH	Double switched socket, 600 series, 10 A vertical 250 V (White)
PDL695BK	Switched socket, 600 series, 10 A horizontal 250 V (Black)
PDL695WH	Switched socket, 600 series, 10 A horizontal 250 V (White)
PDL392-VW	Double switched socket, Iconic, 10 A vertical 250 V (White)
PDL395-VW	Double switched socket, Iconic, 10 A horizontal 250 V (White)



PDL392-VW

Legal Information

The information provided in this Catalog contains description of Schneider Electric products, solutions and services ("Offer") with technical specifications and technical characteristics of the performance of the corresponding Offer.

The content of this document is subject to revision at any time without notice due to continued progress in methodology, design and manufacturing.

To the extent permitted by applicable law, no responsibility or liability is assumed by Schneider Electric and its subsidiaries for any type of damages arising out of or in connection with (i) informational content of this Catalog not conforming with or exceeding the technical specifications, or (ii) any error contained in this Catalog, or (iii) any use, decision, act or omission made or taken on basis of or in reliance on any information contained or referred to in this Catalog.

SCHNEIDER ELECTRIC MAKES NO WARRANTY OR REPRESENTATION OF ANY KIND, WHETHER EXPRESS OR IMPLIED, AS TO WHETHER THIS CATALOG OR ANY INFORMATION CONTAINED THEREIN SUCH AS PRODUCTS AND SERVICES WILL MEET REQUIREMENTS, EXPECTATIONS OR PURPOSE OF ANY PERSON MAKING USE THEREOF.

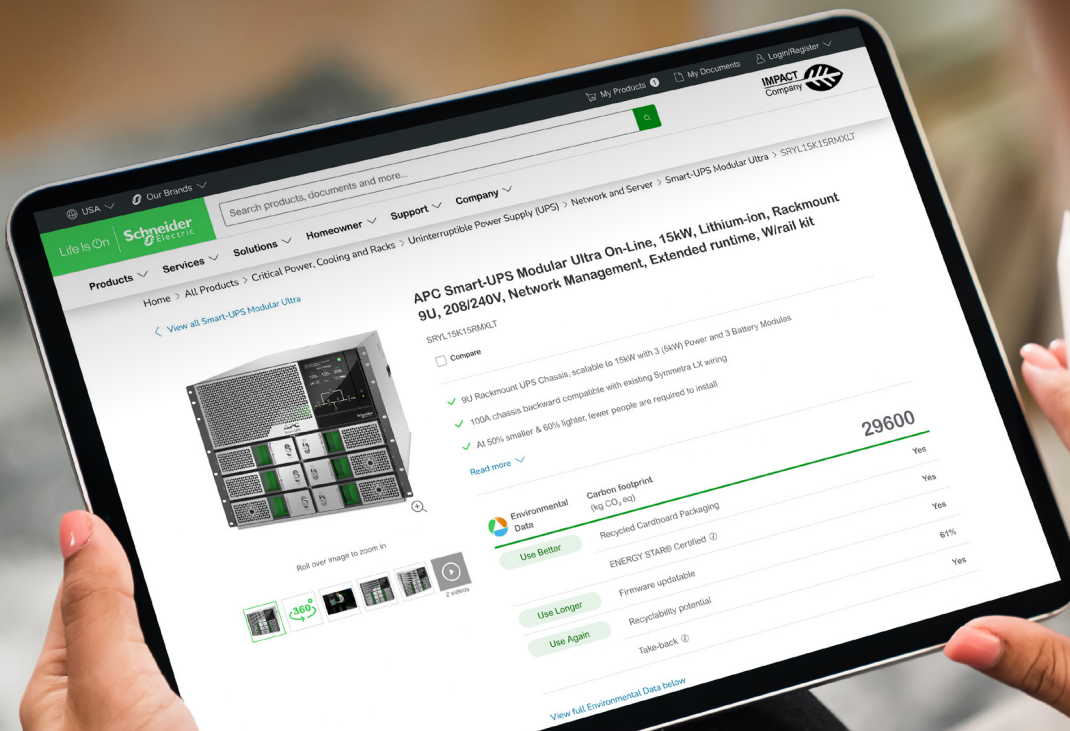
Schneider Electric brand and any trademarks of Schneider Electric and its subsidiaries referred to in this Catalog are property of Schneider Electric or its subsidiaries. All other brands are trademarks of their respective owners.

This Catalog and its content are protected under applicable copyright laws and provided for informative use only. No part of this Catalog may be reproduced or transmitted in any form or by any means (electronic, mechanical, photocopying, recording, or otherwise), for any purpose, without the prior written permission of Schneider Electric.

Copyright, intellectual, and all other proprietary rights in the content of this Catalog (including but not limited to software, audio, video, text, and photographs) rests with Schneider Electric or its licensors. All rights in such content not expressly granted herein are reserved. No rights of any kind are licensed or assigned or shall otherwise pass to persons accessing this information.



Environmental Data Program

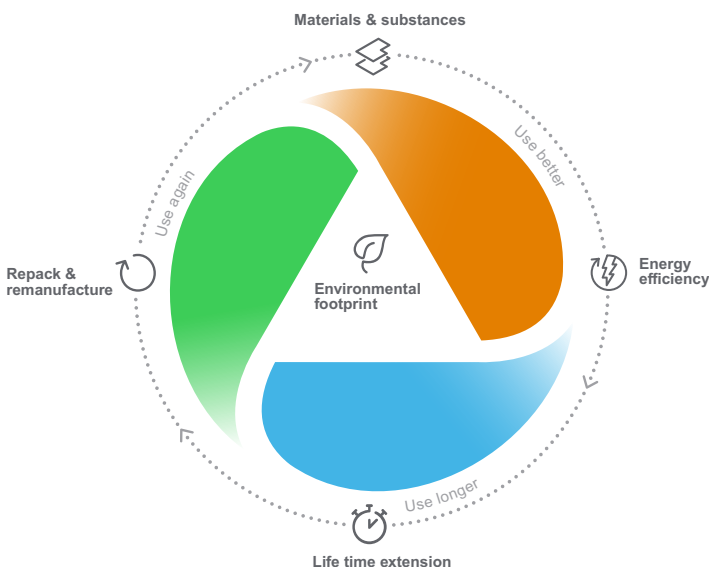


Next-level transparency for better-informed product choices

The Environmental Data Program is a framework for how we measure, categorize, and compare the environmental attributes and footprint of our products.

Using a rigorous, fact-based methodology, the program provides environmental data from across the product lifecycle.

Five data categories across the product lifecycle



Use Better: How sustainable a product is, including environmental footprint, materials and substances, packaging, and energy efficiency.

Use Longer: How a product's life time can be effectively extended in terms of repairability and updatability.

Use Again: How a product can be reused, from dismantling and remanufacturing to recyclability and manufacturer take back.

With this transparent, verified data, customers and partners are empowered to make conscious environmental choices and accurately evaluate and report on sustainability performance.

All our hardware offers have an associated environmental data available on se.com product pages.



Learn more about the
Environmental Data Program

Note



For more information on Resi9 and other PDL Schneider products, contact your local PDL and Schneider Electric Partner Business Representative, electrical wholesaler or visit pdl.co.nz/Resi9

PDL by Schneider Electric
Level 2, Building 6, 60 Highbrook Drive
East Tamaki, Manukau
New Zealand

Consumer Support Enquiries
Phone: 0800 652 999
Website: pdl.co.nz/support

02-2026
CR909002

© 2026 Schneider Electric. All Rights Reserved. PDL, Resi9 and Life Is On | Schneider Electric are all trademarks and the property of Schneider Electric Industries SAS, its subsidiaries, and affiliated companies.

pdl.co.nz/resi9

Life Is On

Schneider
Electric