

# Saturn™ OneTouch 4062TFC Fan Control Grid plate and Cover

## Installation Instructions

### 1. Description

The 4062TFC series fan control plate includes a Saturn OneTouch 2 gang grid plate and Cover. The Cover has one aperture open to suit the Saturn 4060CSFM 3-speed fan control switch mechanism and the other suits a OneTouch Dimmer or switch mechanism. This provides a simple solution for ceiling fan speed control and lighting from a single OneTouch wall plate.

### 2. Models

4062TFC-PW – Saturn OneTouch Fan Control Grid plate and cover 2-gang, Pure White

4062TFC-EB – Saturn OneTouch Fan Control Grid plate and cover 2-gang, Espresso Black

4062TFC-OM – Saturn OneTouch Fan Control Grid plate and cover 2-gang, Ocean Mist

### 3. Installation requirements

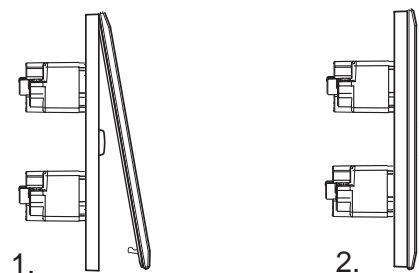
Wire the OneTouch Switch or Dimmer and 4060CSFM fan control mechanisms according to the installation instructions provided with the products. Refer to Clipsal.com for up to date instruction manuals.

#### 3.2 Fascia Fitment

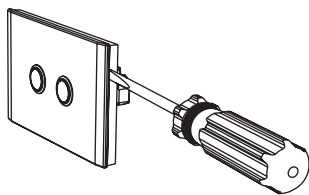
**IMPORTANT NOTE** - . For proper Touch function of the OneTouch switch or dimmer, the fascia must be installed correctly so it sits flush onto the grid plate.

To ensure correct fitment of fascia to grid plate:

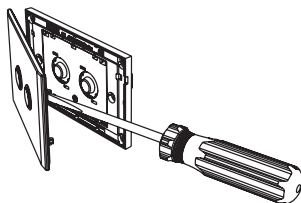
1. Insert top fascia clips into the appropriate grid location.
2. Once inserted "snap-in" bottom of fascia.
3. Ensure Grid plate is installed flat to the wall.
4. Avoid forcing wiring behind plate and over tightening mounting screws.



### 3.3 Fascia Removal



a. Locate screwdriver slot on the edge of the product. Insert a flat blade screwdriver into the slot.

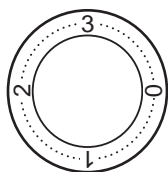


b. Using a levering action, remove the front fascia.

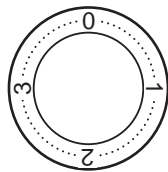
### 3.4 Bezel Alignment

- Insert bezel to align with the notch in the plate according to below instruction.
- Once bezel is in place, insert the chrome ring and knob onto the fan controller shaft.

Note: bezels only fit one way.



**Horizontal mounted**  
Plate bezel, '1'  
to be aligned with the notch in the fascia plate.



**Vertical mounted**  
Plate bezel, '2'  
to be aligned with the notch in the fascia plate.

Schneider Electric (Australia) Pty Ltd

Contact us: [clipsal.com/feedback](http://clipsal.com/feedback)

National Customer Care Enquiries:

**Tel 1300 2025 25 Fax 1300 2025 56**

**clipsal.com**

Schneider Electric (Australia) Pty Ltd reserves the right to change specifications, modify designs and discontinue items without incurring obligation and whilst every effort is made to ensure that descriptions, specifications and other information in this catalogue are correct, no warranty is given in respect thereof and the company shall not be liable for any error therein.

© 2015 Schneider Electric. All Rights Reserved.  
Trademarks are owned by Schneider Electric Industries SAS or its affiliated companies.