

# 230DRANS New South Wales Meter Box

## Technical Data Sheet

The new Clipsal NSW Meter Box combines a wide access panel meter enclosure (suits Temporary and Permanent Installations) with features that make it perfect for domestic outdoor locations.

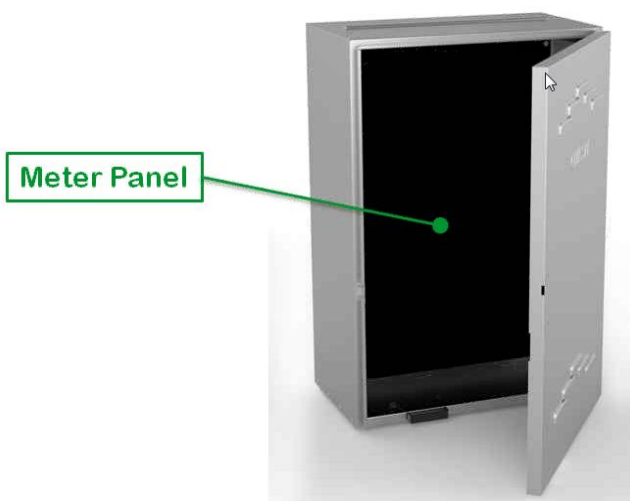


### Application

Exterior meter boxes act as an enclosure for your customers' circuit protection products. They bring protection, while providing easy access to electrical equipments during maintenance.

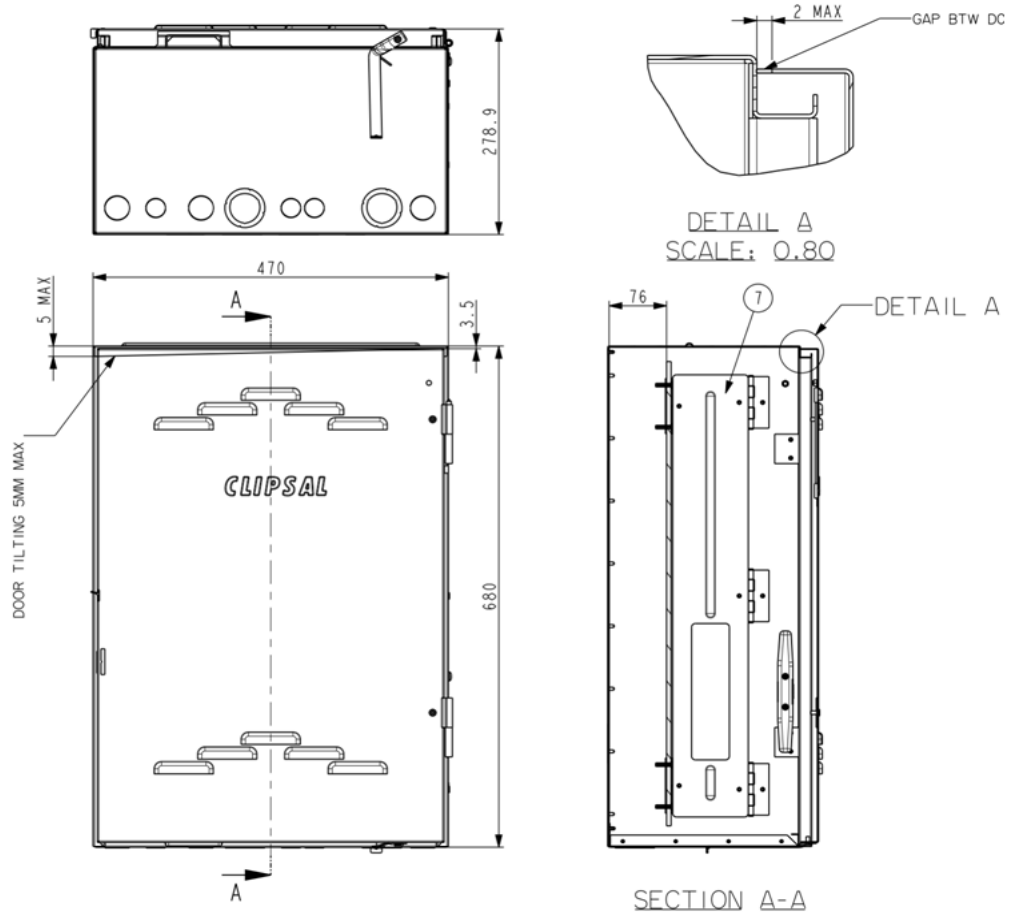
Clipsal's Meter Box have been designed with safety and security in mind and constructed from robust galvanized steel.

The generous wiring room and well-located cable knockouts allow for a quick fit-off, every time.

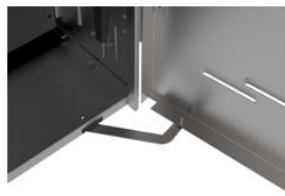


### Features and benefits:

- Galvanised steel meter box
- No powder coating - paint with the colour of your choice after installation
- Overall dimensions H680 x W470 x D279mm
- Wide black laminated meter panel - Asbestos-free paper laminate
- Meter panel is double hinged: it swings forward or can be fully removed for easy access and wiring.
- Hidden cable entry at bottom, via 2 x 50/40mm, 3 x 32mm and 3 x 25mm diameter knockouts to keep cables safe and tidy
- Includes sliding bracket and lead tie-off point and to suits temporary and permanent Installations.
- Door retaining strap to keep door open, for convenience during installation and maintenance
- Lockable door
- Door and meter panel available as spare components
- IP 23 rated
- Compliant with NSW Service & Installation Rules



Hidden cable entry at bottom



Door retaining strap



Sliding bracket for temporary powerleads



Lead tie-off point

## Specifications

Standard Size				
Cat. No.	Length	Width	Depth	Meter Panel
230DRANS	680mm	470mm	278.9mm	630mm x 440mm

This superior lockable enclosure is compliant with NSW Services and Installation Rules

Schneider Electric  
33-37 Port Wakfield Road  
Gepps Cross, South Australia, 5085

National Customer Care Enquires  
**1300 2025 25**  
www.clipsal.com

Schneider Electric (Australia) Pty Ltd reserves the right to change specifications, modify designs and discontinue items without incurring obligation and whilst every effort is made to ensure that descriptions, specifications and other information in this document are correct, no warranty is given in respect thereof and the company shall not be liable for any error therein.

© 2015 Schneider Electric. All Rights Reserved.

Trademarks are owned by Schneider Electric Industries SAS or its affiliated companies.