

Remote Test / Hush Feature

DESCRIPTION

The Remote Test / Hush feature is controlled by the main smoke alarm unit. The wireless base provides an optional connection for Remote Test / Hush buttons (dry contact momentary remote switch(es) such as Clipsal Bell Press switches). The connections are located under a screw-down cover (see (A) in the diagram below).

CONNECTION OPTIONS FOR REMOTE TEST / HUSH BUTTONS

It is possible to connect remote buttons as either separate Test and Hush buttons, or as a single Test / Hush button to perform both functions. (See the diagram on the right.)

- Wiring capacity of each terminal: 2 × 1.5 mm² cables.
- Terminal screws: All terminal screws are combination screw head type.
- Max. cable length to the Remote Test / Hush switch: 20 m.

TEST FUNCTION (WHEN NO SMOKE IS PRESENT)

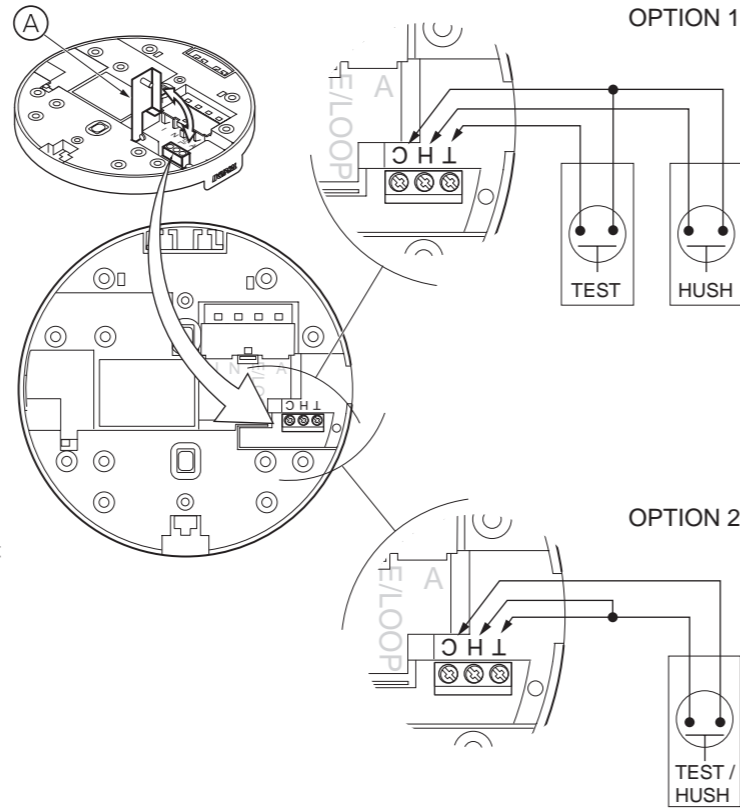
- Test the LOCAL smoke alarm: Press and hold either the Remote Test button or the Local Test / Hush button and release within 4 seconds. Only the local smoke alarm will sound.
- Test the LINKED smoke alarms: Press and hold either the Remote Test button or the Local Test / Hush button for more than 5 seconds. The linked alarms will sound.

Note for wireless interconnection: After 5 seconds, a signal of 15 seconds duration is sent to all units. When the wireless linked smoke alarms detect the signal, they will sound until the signal is no longer transmitted. The wireless detection interval is 10 seconds.

Important information: After the Test / Hush button has been pressed, wait 10 minutes before any additional testing is conducted to avoid any false alarm responses as product has reduced sensitivity during this period.

WHEN SMOKE IS PRESENT

- Pressing the Remote Hush button or the Local Test / Hush button will silence the alarm only if the smoke alarm fitted to the wireless base is the one that has detected smoke.
- All smoke alarms that are interconnected will also fall silent.
- Pressing the Remote Hush button or the Local Test / Hush button will not silence the alarm if the smoke alarm is not the one that has detected smoke.
- Where wireless interconnection is used, it is possible that multiple smoke alarms detect smoke. In order to silence the alarms in such cases, you must press the Local Test / Hush button on every smoke alarm that has detected smoke.



Warranty Statement

Schneider Electric (Australia) Pty Ltd, (Clipsal by Schneider Electric), warrants this product to be free from defects in materials and workmanship for a period of five years from the date of installation. The benefits conferred herein are in addition to any other rights and remedies you may have at law in respect to this product. Australian and New Zealand customers please see the notes below.

Australia: Australian Consumer Law specifies that our goods come with guarantees that cannot be excluded. You are entitled to a replacement or refund for a major failure and compensation for any other reasonably foreseeable loss or damage. You are also entitled to have the goods repaired or replaced if the goods fail to be of acceptable quality and the failure does not amount to a major failure.

New Zealand: This guarantee is in addition to and does not affect your rights under applicable law, except where that law expressly provides otherwise. The Consumer Guarantee Act 1993(NZ) will not apply if this product is purchased for the purpose of business.

This warranty is expressly subject to the Schneider Electric product being installed, wired, tested, operated and used in accordance with our instructions and specifications. Any alterations or modifications made to the product without our permission will void the warranty. Schneider Electric will at its option repair, replace or refund any defective product. The cost of replacement or repair of a defective product is limited to the price of the product only. Schneider Electric will not be responsible for the cost of retrieving, removing, reinstalling, transporting (including return of the defective product to us) or re-testing a product.

How to make a claim: You shall provide Schneider Electric with adequate particulars of the defect within 28 days of the fault occurring. Contact your local Schneider Electric, PDL or Clipsal products' supplier and provide the details of the date of purchase, description of load or connections and the circumstances of the failure. Returned products must be securely packed and labeled for proper processing.



by Schneider Electric

Australia
Schneider Electric (Australia) Pty Ltd
 Customer Care Australia:
 1300 369 233
 Email:
 customercare.au@schneider-electric.com
 www.schneider-electric.com.au

Technical and Sales Support

For assistance with technical problems, contact your nearest Schneider Electric sales representative.

New Zealand
Schneider Electric (NZ) Ltd
 38 Business Parade South, Highbrook,
 East Tamaki, Manukau 2013
 P.O. Box 259370 Botany, Manukau 2163
 Telephone +64 9-829 0490, Fax +64 9-829 0491
 After hours service hotline:
 0800 735 4357 (New Zealand only)
 Customer Care: 0800 652 999
 Email:
 sales@nz.schneider-electric.com
 www.schneider-electric.com

Schneider Electric reserves the right to change specifications, modify designs and discontinue items without incurring obligation and whilst every effort is made to ensure that descriptions, specifications and other information in this catalogue are correct, no warranty is given in respect thereof and the company shall not be liable for any error therein.

© Schneider Electric 2016

This material is copyright under Australian and international laws. Except as permitted under the relevant law, no part of this work may be reproduced by any process without prior written permission of and acknowledgement to Schneider Electric.

Schneider Electric acknowledges that the Australian Standard Certified Product logo is a trademark of SAI Global, and that the Activfire Certified logo is a trademark of CSIRO.



FIRE&TEK® MOUNTING BASE 755RFB

Smoke Alarm Mounting Base with Wireless Interconnect



by Schneider Electric

PLEASE LEAVE THESE INSTRUCTIONS WITH THE OCCUPANT, TO BE RETAINED FOR THE LIFE OF THE PRODUCT. THIS PRODUCT MUST BE INSTALLED BY A LICENSED ELECTRICIAN.

Read all Instructions before Installation and Operation

This instruction leaflet contains important information on the correct installation and operation of your wireless mounting base. Read these instructions fully before attempting installation and retain them for future reference. DO NOT try to open or repair this product yourself. There are no user-serviceable parts inside.

Product Description

COMPATIBILITY

The Clipsal 755RFB Smoke Alarm Mounting Base with Wireless Interconnect is designed for use with Clipsal 755 Series 2 smoke alarms.

Note: This wireless base is not compatible with third party products or systems such as fire panels.

FEATURES

- Interconnect up to 40 smoke alarms (wired) or 20 smoke alarms (wireless)
- Dry contact input—enables Test / Hush operation from a momentary switch
- Easy installation and smoke alarm fitment
- Rechargeable battery backup—allows the base to communicate with any wireless interconnected smoke alarms if smoke is detected during a mains power outage
- Low Battery warning
- Installer-configurable house codes for wireless interconnection
- Suitable for use with 755PSMA2 and 755RLPSMA2 surface mount smoke alarms.

APPLICATION

The wireless base has a built-in signal transmitter and receiver. The base transmits a Radio Frequency (RF) alarm signal when the connected smoke alarm unit detects smoke. When the wireless base receives an RF alarm signal from another wireless base, it causes the connected smoke alarm to sound.

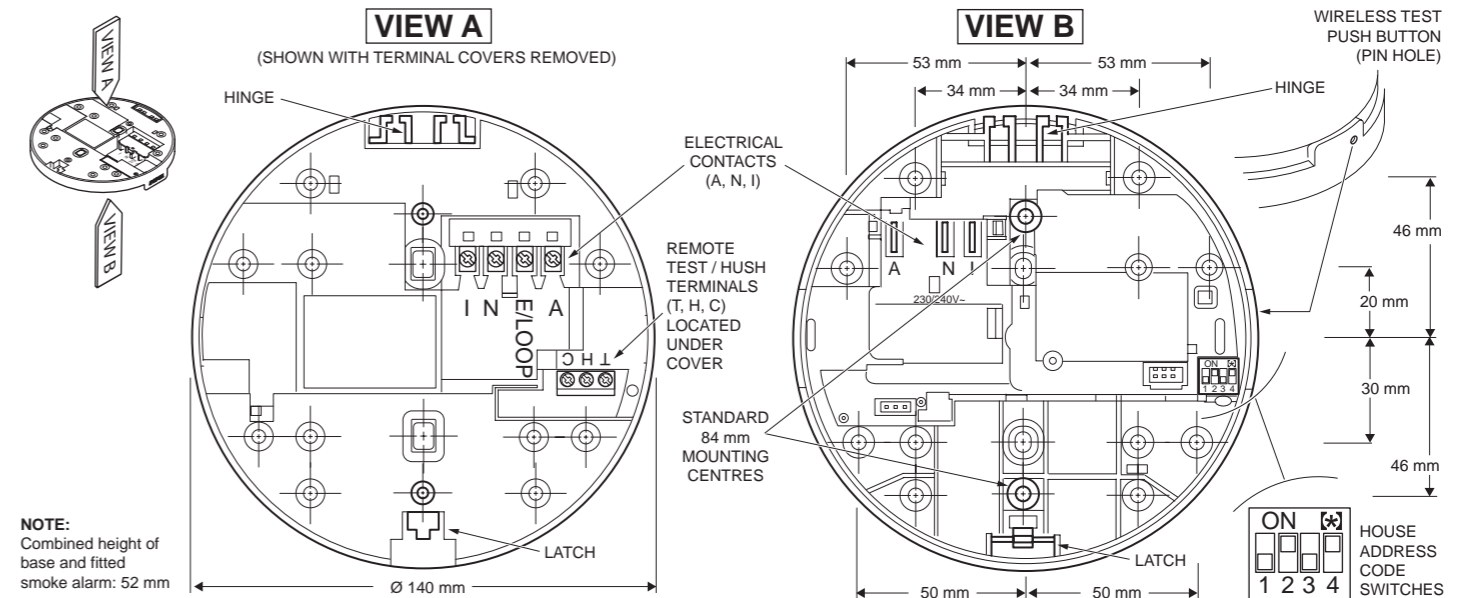
This interconnect feature allows up to 20 wireless units to be interconnected together with a 30 metre indoor range.

The wireless mounting base eliminates the need to install long interconnect wires between different floors or rooms. The 755RFB also has a Remote Test / Hush feature which can be activated by connecting a momentary dry contact switch, such as a Clipsal Bell Press Switch. (See the section 'Remote Test / Hush Feature'.)

Specifications

Main Power Source:	220-240 V a.c., 50 Hz
Secondary Power Source:	Sealed rechargeable battery
Operating Current:	≤40 mA
Battery Life:	Ten years
Terminal Provisions:	Active, Neutral, Loop and Interconnect terminals, each accommodates 2×1.5 mm ²
Operating Temperature:	0 °C to 45 °C
Ambient Humidity:	5% to 95%

Interconnecting:	Max. 20 alarms (wireless) Max. 40 alarms (wired over 150 metres maximum)
Transmit Frequency:	433.92 MHz
RF Range:	100 m free air, 30 m indoors
Coding Selection:	16 combinations
Remote Input:	Dry contact momentary switch (for Remote Test / Hush function)
Approvals:	Activfire RCM
Complies with:	AS/NZS 3100 AS/NZS 4268



Installation

⚡ ⚠ DANGER

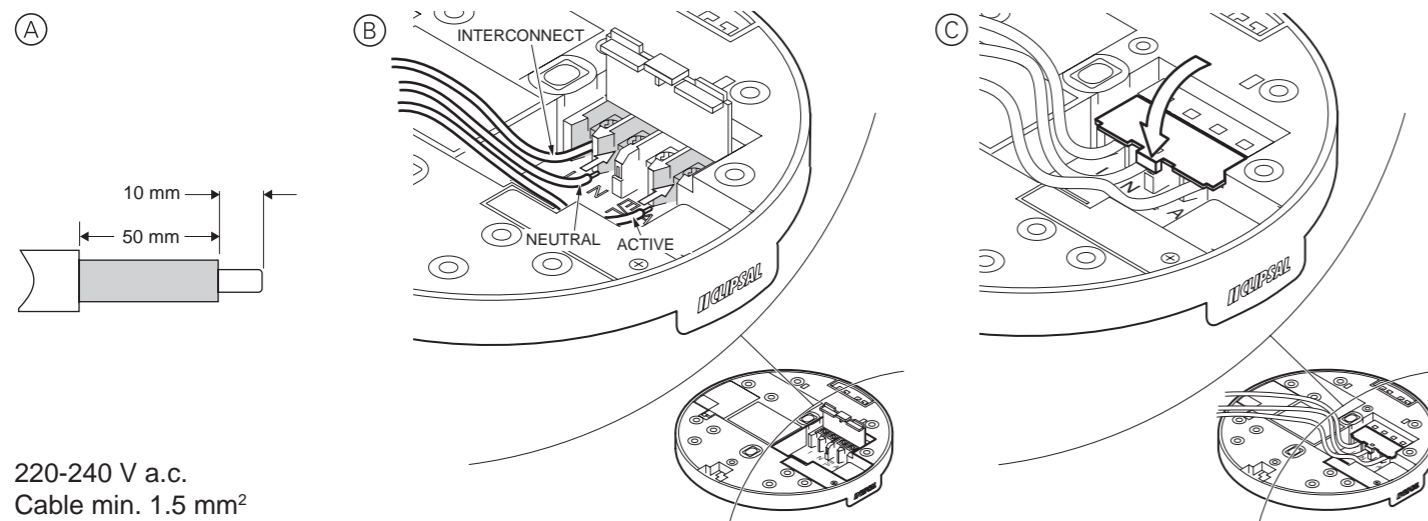
HAZARD OF ELECTRIC SHOCK, EXPLOSION, OR ARC FLASH

- It is illegal for persons other than appropriately licensed electricians or other persons authorised by legislation to work on the fixed wiring of any electrical installation.
 - This product must be used only for the purpose described in this instruction and must be installed in accordance with the wiring rules and regulation in the location where it is installed.
 - Hazardous voltage may be present at the wire leads of this product.
 - Lock out and tag the input circuit before accessing the wiring connections.
- Failure to follow these instructions will result in death or serious injury.

READ THIS BEFORE INSTALLING THE PRODUCT

- Do not connect to a circuit which also has inductive loads connected—spikes generated by switching inductive loads may damage electric components within the wireless base or connected smoke alarm.
- The wireless base is suitable for indoor use only.
- Before making fixing hole(s), check that there are no obstructions hidden beneath the mounting surface such as pipes or cables.
- The chosen location of the wireless base should allow for the product to be securely mounted (e.g. to a ceiling joist) and safely connected to the mains supply.
- Do not attach to surfaces which are damp, freshly painted or otherwise electrically conductive (e.g. metallic surfaces).
- If the location of the wireless base requires the provision of a new electrical supply, the supply must conform with the requirements of the Building Regulations.
- Smoke alarms must be mounted at least 300 mm from light fittings or other obstructions. (See the installation instructions supplied with the smoke alarm.)
- Make connections to the electrical supply in accordance with the following code:
 - Active: Red
 - Neutral: Black
 - Loop: Loop terminal usually used for earth wire.
- All interconnected smoke alarms must be supplied from a single circuit. A common Neutral must be used for the Interconnect to function. Do not connect the Interconnect wire to Active or Neutral.
- Use a minimum of 1.5 mm² 250 V insulated wire for all wiring, including interconnecting wiring.

INSTALLATION PROCEDURE



220-240 V a.c.
Cable min. 1.5 mm²

1. Strip the Active, Neutral and Interconnect (if used) wires back to the strip length shown in (A) in the diagram above.
2. Connect the wires to the correct terminals on the base (see (B) in the diagram above) and ensure the terminal screws are fully tightened.
3. Clip the terminal cover closed to avoid contact with the live terminals.
4. Screw the mounting base onto the ceiling or wall using appropriate fasteners.
5. Clip the smoke alarm on to the base.
6. (755PSMA2 smoke alarm only) Install the 9 V battery. See the instruction leaflet supplied with the 755PSMA2 smoke alarm for details.

Note: The smoke alarm base will only close with a battery installed. Do not attempt to close without a battery installed.
7. Turn on the mains power and check that the smoke alarm Green and Red LEDs function:
 - a. The Green LED should illuminate to show mains power present.
 - b. The Red LED will pulse every 40–60 seconds to indicate correct operation and that the backup battery is okay.
8. Press the Test / Hush button to check that the alarm works.

Installation is not complete until both LEDs are functioning correctly and the alarm has been checked for correct operation.

Interconnecting Smoke Alarms

HOW INTERCONNECTED ALARMS FUNCTION

- Interconnecting smoke alarms is a method of joining a series of alarms so that if any one alarm senses smoke, all the connected alarms will operate (alarm).
- A 9 V signal is applied to the interconnect wire (referenced to neutral) to alarm all the other interconnected alarms.

WIRED INTERCONNECTION SETUP

⚡ ⚠ CAUTION

RISK OF INJURY AND EQUIPMENT DAMAGE / MALFUNCTION

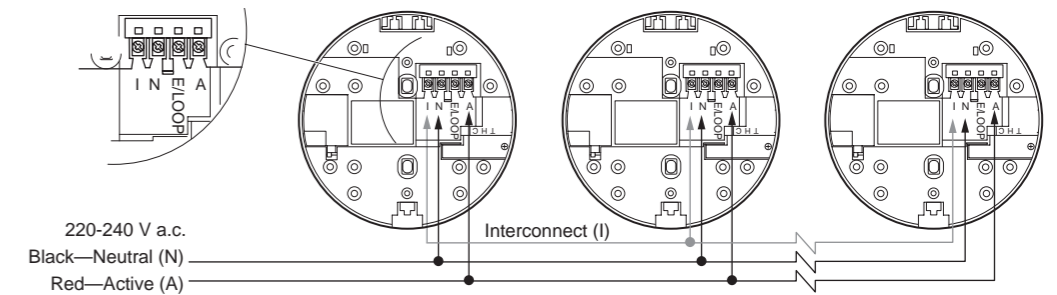
- All interconnected smoke alarms must be supplied from the same circuit.
- A common Neutral must be used for the Interconnect to function.
- DO NOT connect the Interconnect wire to Active or Neutral.
- A maximum of 40 Clipsal 755 smoke alarms can be installed on one circuit (wired interconnection only).
- Only Clipsal smoke alarms can be interconnected with each other.

Failure to follow these instructions may result in injury and equipment damage / malfunction.

TERMINAL

A: Active / Line
I: Interconnect
N: Neutral
E/LOOP: Earth or Loop

Max. Interconnected Alarms: **40**
Max. wiring length between first and last alarm: **150 m**

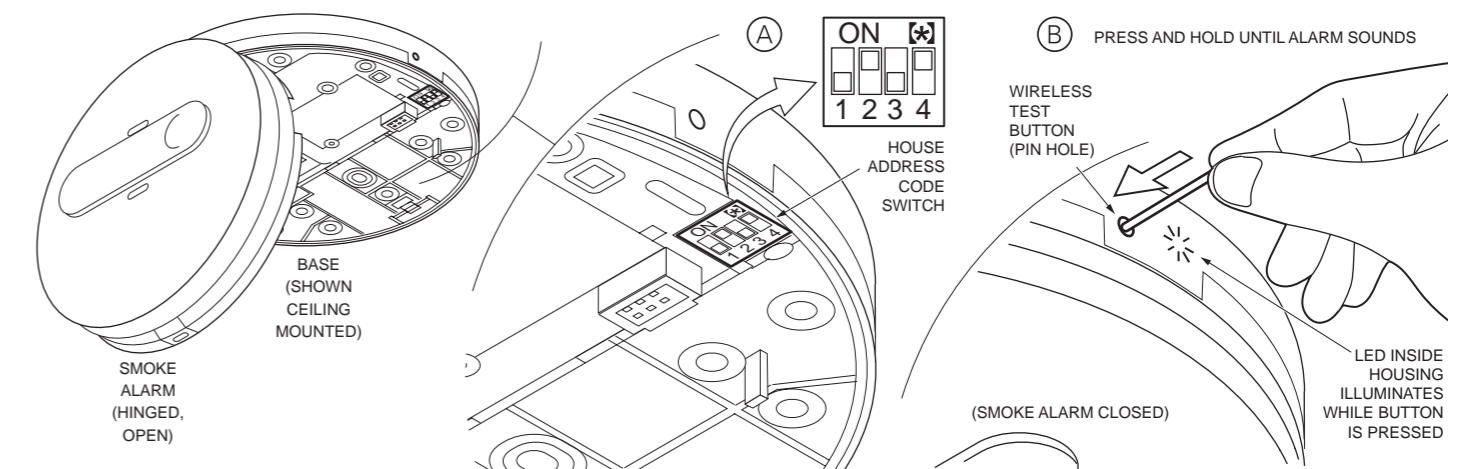


WIRELESS INTERCONNECTION SETUP

Note: The maximum number of bases that can be interconnected using wireless is 20. Only Series 2 smoke alarms are compatible with the wireless smoke alarm bases.

Searching for an Available Wireless House Code

- The purpose of this search is to check that the desired house address code is not already being used by another installation within the operational area.
- The search process should take no longer than 2 minutes for each code scan.



PROCEDURE: SEARCH FOR AN AVAILABLE WIRELESS HOUSE CODE

1. Select your preferred house code on the wireless base using the dip switches. See (A) in the diagram above.
2. Install a smoke alarm onto the wireless base, ensuring that the mains supply is present and that the green LED indicator is lit.
3. Using a pin or other suitable tool, press and hold the wireless test button (see (B) in the diagram above) for approximately 10 seconds until the smoke alarm sounds at least once. The LED indicator located next to the test push button will illuminate whilst the test button is depressed.
4. Wait for at least 2 minutes:
 - a. If there is another installation with the same wireless house code as yours in the operational area, your smoke alarm will emit a sound.
 - b. If a conflict is detected, select an alternate wireless house code address using the dip switches, and repeat the above steps until there is no conflict.
5. If your smoke alarm does not sound during the 2 minutes of testing, it means there are no other installations using the same code.

Note: During the wireless house code conflict search process, other smoke alarms within the vicinity with conflicting codes will not sound. Only the smoke alarm connected to the wireless base being tested will announce a conflict.