

Installation Instructions

1.0 Product Range

| | |
|----------------|--|
| TPDL200 | 15W LED Downlight, 240 V a.c., 3000 K, White Trim |
| TPDL201 | 15W LED Downlight, 240 V a.c., 3000 K, Brushed Chrome Trim |
| TPDL202 | 15W LED Downlight, 240 V a.c., 4000 K, White Trim |
| TPDL203 | 15W LED Downlight, 240 V a.c., 4000 K, Brushed Chrome Trim |

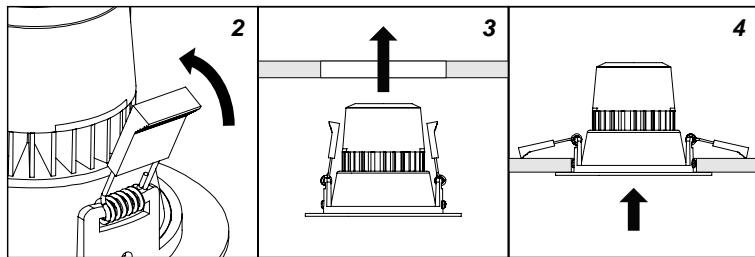
2.0 Installation Requirements

- This equipment must only be installed and serviced by an appropriately licensed electrical person
- All wiring and installation of this product must adhere to local and national wiring rules. eg. AS/NZS 3000 Electrical installations.
- The product is class 2
- Check whether the product has been damaged during transport. Do not operate/install any product which appears damaged in any way. Return the complete product to the place of purchase for inspection, repair or replacement.
- Take care not to pull any electrical wires during unpacking as this may damage the connection.
- Isolate the electrical supply before doing any work on this equipment.
- Select a suitable location for installation. This product is protected against water penetration to IP44 standards (from front only)
- Avoid touching the unit during and after use as the temperature of the unit may be hot to touch
- No user or serviceable parts inside

3.0 Installation Instructions

Installing Product

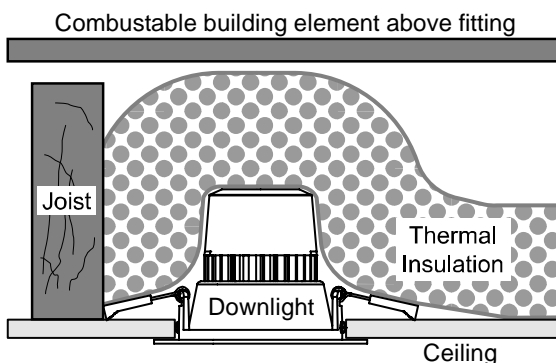
1. Connect mains cable
2. Fold back mounting springs
3. Insert down light into hole
4. Ease product upward



This series of down light has achieved an IC-F classification and complies with AS/NZS 60598.2.2.

This down light is classified as an IC-F recessed luminaire that can be abutted against normally flammable materials, including building insulation, and can be covered in normal use.

This type of recessed luminaire is effectively a sealed unit that has restricted flow of air between the habitable room and the luminaire.



Risk of Fire - Required clearance from structural members and building elements.

SCB = 0 mm, HCB = 0 mm

SCB – Side Clearance to Building element:

Minimum distance between the side of the recessed luminaire and any building element.

HCB – Height Clearance to Building element:

Minimum distance between the top of the recessed luminaire and any building element above it.

4.0 Dimming

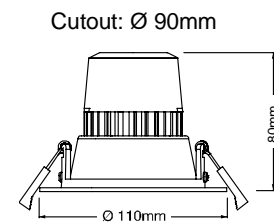
This product has been designed to achieve deep dimming performance which allows very low levels of light output to provide the perfect atmosphere for all occasions. This product is compatible with Clipsal Universal and LED dimming technology. Please refer to Clipsal.com/load for latest dimming compatibility information.

Note:

In some regions of the country a slight flicker may be experienced when the luminaire is dimmed. This is due to power line signals sent by the electricity supply authorities to assist with switching utilities, for example hot water services or changing tariff rates. This effect is not a malfunction of the luminaire or dimmer but a result of local installation conditions changing during the day. If this occurs, adjusting the dimmer back to maximum brightness will help minimize such flickering.

5.0 Product Specifications

| Cat # | TPDL200 | TPDL201 | TPDL202 | TPDL203 |
|-------------------------|---------------------------------|---------|---------|---------|
| Voltage Rating | 240 V a.c., 50 Hz | | | |
| IP Rating | IP44 (from front only) | | | |
| Total Power Consumption | 15 W | | | |
| Beam Angle | 90 degrees | | | |
| Colour Temperature | 3000 K | 3000 K | 4000 K | 4000 K |
| Lumens | 900 lm | 900 lm | 930 lm | 930 lm |
| Operating Temperature | -10 °C to +45 °C | | | |
| Operating Humidity | +10% to +95% RH, non condensing | | | |
| Storage Temperature | 0 °C to +60 °C | | | |
| Storage Humidity | +10% to +95% RH, non condensing | | | |
| CRI | > 80 | | | |
| Lifespan (L70) | 30,000 hrs | | | |



6.0 Warranty

- The benefits conferred herein are in addition to and in no way shall be deemed to derogate; either expressly or by implication, any or all other rights and remedies in respect to the Clipsal by Schneider Electric product, which the consumer has under the Commonwealth Trade Practices Act or any other similar State or Territory Laws.
- The warrantor is Schneider Electric (Australia) Pty Ltd of 33-37 Port Wakefield Road, Gepps Cross, South Australia 5094. With registered offices in all Australian states.
- This Clipsal by Schneider Electric product is guaranteed against faulty workmanship and materials for a period of three (3) years from the date of installation.
- Schneider Electric (Australia) Pty Ltd reserves the right, at its discretion, to either repair free of parts and labour charges, replace or offer refund in respect to any article found to be faulty due to materials, parts or workmanship.
- This warranty is expressly subject to the Clipsal by Schneider Electric product being installed, wired, rested, operated and used in accordance with the manufacturer's instructions.
- All costs of a claim shall be met by Schneider Electric (Australia) Pty Ltd, however should the product that is the subject to the claim be found to be in good working order all such costs shall be met by the claimant.
- When making a claim the consumer shall forward the Clipsal by Schneider Electric product to the nearest office of Schneider Electric (Australia) Pty Ltd with adequate particulars of the defect within 28 days of the fault occurring. The product should be returned securely packed, complete with details of the date and place of purchase, description of load, and circumstances of malfunction.

Schneider Electric (Australia) Pty Ltd

Contact us: clipsal.com/feedback

National Customer Care Enquiries:

Tel 1300 2025 25

Fax 1300 2025 56

Schneider Electric (NZ) Pty Ltd

National Customer Care Enquiries:

Tel 0800 652 999

Fax 0800 101 152

clipsal.com

Schneider Electric Pty Ltd reserves the right to change specifications, modify designs and discontinue items without incurring obligation and whilst every effort is made to ensure that descriptions, specifications and other information in this catalogue are correct, no warranty is given in respect thereof and the company shall not be liable for any error therein.

© 2015 Schneider Electric. All Rights Reserved.

Trademarks are owned by Schneider Electric Industries SAS or its affiliated companies.