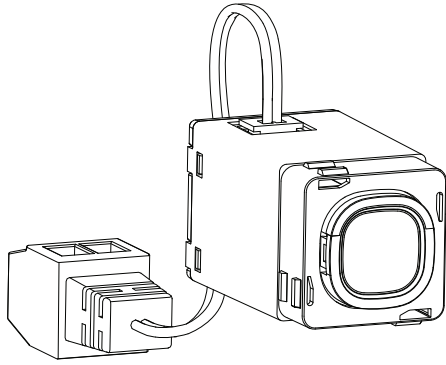


# Master Off Mech 30 Series

## CLSMM-WE



The Master Off Mechanism switches off all the devices connected to the system. Multiple CLSMM-WE can be connected to the same Clipsal SILC system.

### ⚡ ⚠ DANGER

#### HAZARD OF ELECTRIC SHOCK, EXPLOSION, OR ARC FLASH

- It is illegal for persons other than an appropriately licensed electrical contractors or other persons authorised by legislation to work on the fixed wiring of any electrical installation.
- To comply with AS/NZS3100 safety standard, the product must be used only for the purpose described in this instruction and must be installed in accordance with the wiring rules and regulation in the location where it is installed.
- Hazardous voltage may be present at the wire leads of this product.
- Lock out and tag the input circuit before accessing the wiring connections.

**Failure to follow these instructions will result in death or serious injury.**



©2015 Schneider Electric. All rights reserved.

### ⚠ CAUTION

#### EQUIPMENT DAMAGE HAZARD

- Install the device according to instructions in this document
- Pay attention to the specifications and wiring diagrams related to the installation
- Do not use this product for any other purpose than specified in this instruction
- For electronic control equipment DO NOT MEGGER.

**Failure to follow these instructions can result in death or serious injury, or equipment damage.**

## Product Range

The following products are available in this range.

Product Reference	Description
CLSMM-WE	Master Off Mech 30 Series
CLSSWG	Wireless Gateway Unit
CLS1R5	Network Relay Unit
CLSPB	Junction Box and Plug Assembly
CLSPD	Power Supply DIN Mounted
CLSK12WF-WH	Network Driver with LED Fitting, white, 3000 K warm white
CLSK12WF-BC	Network Driver with LED Fitting, chrome, 3000 K warm white
CLSK12CF-WH	Network Driver with LED Fitting, white, 4000 K cool white
CLSK12CF-BC	Network Driver with LED Fitting, chrome, 4000 K cool white

## Features

The Master Off provides a manual control point as shown below:

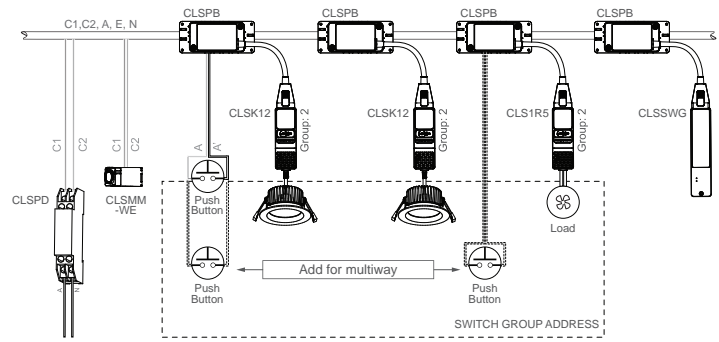


Figure 1: Control system overview

## Operation

The Master Off is a single function device which allows all devices connected to the SILC control system to be turned off from a single button press. The green LED will illuminate when the command is sent.

\* Visit [SILC.clipsal.com](http://SILC.clipsal.com) for more information

## Installation

- Assemble the label and cover as shown in figure 2 below.
- Push the Master Off into the grid plate.
- Use the supplied cable to connect the Master Off mechanism to the Clipsal SILC line cable. The Clipsal SILC terminals are both marked with 'DA' and are not polarity sensitive. The Clipsal SILC line cable must be a mains rated cable which is no greater than 2.5mm<sup>2</sup>. Expose the conductor no more than 6 mm and insert into the screw terminal. Using a small blade screw driver carefully tighten the terminal until the cables are firmly held in position with no copper exposed.

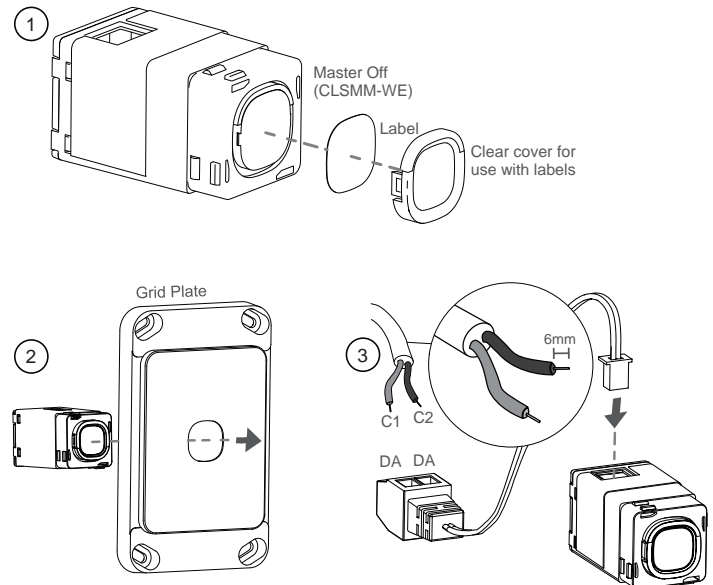


Figure 2: Installing Master Off

### NOTE:

For Saturn 4000 and Saturn Zen Z4000, please use spacer 5031NNSPACER without attaching the clear cover and label.

© 2015 Schneider Electric. All rights reserved.

Schneider Electric Australia Pty Ltd reserves the right to change specifications or designs described in this instruction without notice and without obligation.

Trademarks

Clipsal is a registered trademark of Schneider Electric.

Clipsal SILC is a registered trademark of Schneider Electric.

All other trademarks are the property of their respective owners.

©2015 Schneider Electric. All rights reserved.

©2015 Schneider Electric. All rights reserved.

Electrical Specifications

Parameter	Value
Clipsal SILC connection	Screw terminal for 2.5 mm² cable
Control operating voltage	16 – 22.5 Vd.c.
Control max. operating current	8.5 mA
Max. abnormal voltage on control terminals	Max. supply voltage for 1 min
Operating temperature range	0 to 50°C
Storage temperature range	0 to 60°C
Operating humidity range	10 to 95% R.H. non-condensing
Storage humidity range	10 to 95 % R.H. non-condensing
Safety compliance	AS/NZS 61347-2-11
EMC emission compliance	AS/NZS CISPR15
Specifications typical @ 25°C	
No user serviceable parts inside	

©2015 Schneider Electric. All rights reserved.

Warranty Statement

The benefits conferred herein are in addition to, and in no way shall be deemed to derogate; either expressly or by implication, any or all other rights and remedies in respect to the product that the consumer has under the Commonwealth Trade Practices Act or any other similar State or Territory Laws.

The warrantor is Schneider Electric Australia Pty Ltd, 33-37 Port Wakefield Road, Gepps Cross, South Australia 5094.

This product is guaranteed against faulty workmanship and materials for a period of three (3) years from the date of installation.

Schneider Electric Australia Pty Ltd reserves the right, at its discretion, to either repair free of parts and labour charges, replace or offer refund in respect to any article found to be faulty due to materials, parts or workmanship.

This warranty is expressly subject to the product being installed, wired, tested, operated and used in accordance with the manufacturer's instructions. Should the product that is the subject of the claim be found to be in good working order all costs incurred to replace the product shall be met by the claimant.

When making a claim the consumer shall contact the local Schneider Electric office and provide particulars of the defect within 28 days of the fault occurring. Return authorization is required before the product is sent to Schneider Electric. Returned items must be securely packed, complete with details of the date and place of purchase, description of load, and circumstances of malfunction.

Schneider Electric Australia Pty Ltd

Contact us: [clipsal.com/feedback](https://clipsal.com/feedback)

clipsal.com

Australia National Customer Care Enquiries: Tel 1300 2025 25  
Fax 1300 2025 56

New Zealand National Customer Care Enquiries: Tel 0800 652 999  
Fax 0800 100 152

Schneider Electric reserves the right to change specifications, modify designs and discontinue items without incurring obligation. Every effort is made to ensure that descriptions, specifications and other information in this instruction are correct. No warranty is given in respect thereof and the company shall not be liable for any error therein.