

Warranty

1. Schneider Electric (Australia) Pty Ltd warrants your product to be free from defects in material and workmanship for a period of two (2) years from the date of purchase.
2. The warranty applies only to the original consumer purchaser and only to products used in normal use and service. If this product is found to be defective, Schneider Electric's (Australia) Pty Ltd only obligation, and your exclusive remedy, is the repair or replacement of the product at Schneider Electric's (Australia) Pty Ltd discretion, provided that the product has not been damaged through misuse, abuse, accident, modifications, alteration, neglect or mishandling (excluding any labour cost relating to removal or reinstallation of product and transport cost). This warranty shall not apply to any product, which is found to be improperly installed, setup or used in any way not in accordance with the instructions supplied with the product.
3. If your product fails to operate satisfactorily, please return it to the point of purchase or to your nearest Schneider Electric (Australia) Pty Ltd office.
4. Schneider Electric (Australia) Pty Ltd does not warrant and specifically disclaims any warranty, whether expressed or implied, of fitness for a particular purpose other than the warranty contained herein. Not implied warranty on this product, created by state law, shall extend beyond the term of this warranty unless such law otherwise provides.
5. Schneider Electric (Australia) Pty Ltd specifically disclaims any liability and shall not be liable for any consequential or incidental loss or damage, including, but not limited to, damages to any equipment with which this product is used.
6. No agent, representative, dealer or employee of the company has the authority to increase or alter the obligations or terms of this warranty. Schneider Electric (Australia) Pty Ltd reserves the right to change specifications or designs described in this manual without notice and without obligation.

IMPORTANT: RETAIN YOUR RECEIPT. To obtain in-home service under warranty you must retain your original purchase receipt. Service will otherwise be charged at current rates.

For your future reference, please complete the following details and file this information with your purchase invoice.

Exhaust Fan Model CEF30

Serial Number: _____

Purchased From: _____

Date of Purchase: _____

Made in PRC

Schneider Electric (Australia) Pty Ltd

Contact us: clipsal.com/feedback

National Customer Care Enquiries:

Tel 1300 2025 25

Fax 1300 2025 56

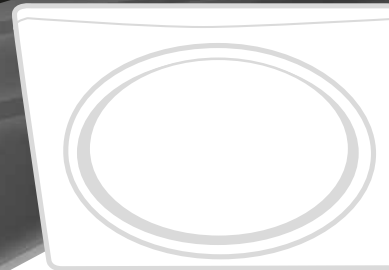
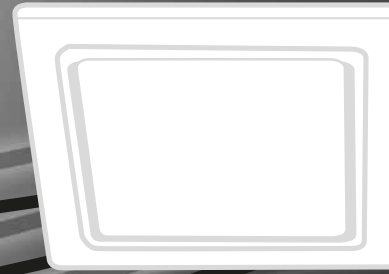
clipsal.com

Schneider Electric (Australia) Pty Ltd reserves the right to change specifications, modify designs and discontinue items without incurring obligation and whilst every effort is made to ensure that descriptions, specifications and other information in this catalogue are correct, no warranty is given in respect thereof and the company shall not be liable for any error therein.

© 2015 Schneider Electric. All Rights Reserved. Trademarks are owned by Schneider Electric Industries SAS or its affiliated companies.

CLIPSAL[®]

by Schneider Electric



Airflow Ceiling Exhaust Fan CEF30 Series



Installation Instructions and Warranty

Fitting Instructions

Thank you for purchasing the CEF30 Series exhaust fan product from Clipsal by Schneider Electric. You can be assured of years of trouble-free operation by installing your ceiling fan carefully in accordance to these instructions.

Please read all instructions before commencing installation.

All wiring must be carried out by a licensed Electrician in accordance with all local codes and standards.

Suitable Locations

The CEF30 Series exhaust fan has been designed specifically for cavity type ceilings. Flat roof, sloping ceiling or vertical wall installation are NOT recommended.

Generally, if mounted in a bathroom, the unit should be installed outside the shower cubical.

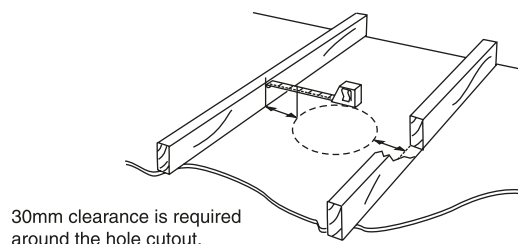
Before commencing any cutting, check in the ceiling space that there are no obstructions such as ceiling joists and that there is enough height clearance for the housing. Check that the electrical wiring can be routed from the wall switch to the mounting location.

IMPORTANT!
**THESE INSTRUCTIONS ARE ALSO YOUR
INSTALLATION TEMPLATE.**

Where to Locate

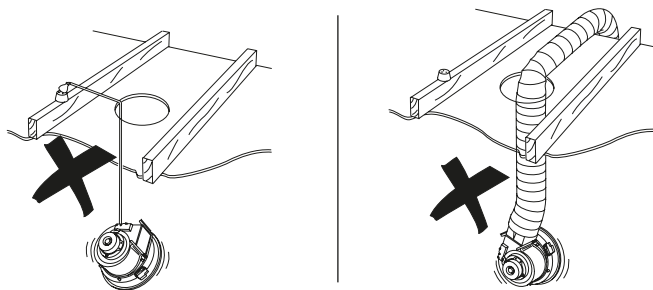
A few minutes planning can make a big difference to the installation time and also your satisfaction with the function of the unit.

Locate the position of the fan on the ceiling. (It may be safer to mark the position from above the ceiling where obstructions are clearly visible, rather than from inside the room).



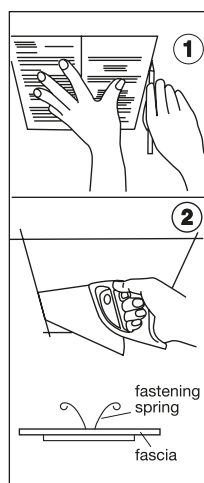
Cautionary Notes

Do not suspend the fan from the power cord or flexible ducting. Always disconnect the fan if it is to be removed from the ceiling.



Mounting

- Using this card in its open state as a template, position it in the area you want to place your exhaust fan and draw around the edges with a pencil to mark the hole cutting size. **BE SURE TO CHECK ABOVE THE CEILING FOR MINIMUM SPACE OF 250mm AND THE LOCATION OF THE CEILING JOISTS.**
- Use a saw to cut the section along the drawn lines.
- The grille easily unclips from the main body by lifting gently and separating the two apart. Carefully remove the spring loaded clips from the housing.
- Lift the fan into the hole and carefully insert the electrical plug. Then push fan completely into position.
- Push out the 4 slide bars and tighten the screws until firm.
- Replace the grille by inserting the spring loaded clips into the slots and push up. The grille will self align and hold in position.



Important Safeguards

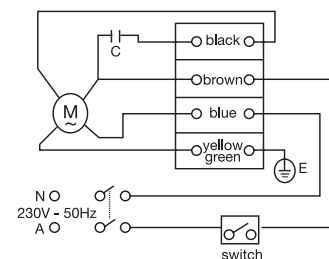
- This appliance is not intended for use by persons (including children) with reduced physical, sensory or mental capabilities, or lack of experience and knowledge, unless they have been given supervision or instruction concerning the use of the appliance by a person responsible for their safety.
- Children should be supervised to ensure that they do not play with the appliance.
- Ensure the grille is free of objects, dust build up, etc. Make sure that the air flow through the grille is not inhibited.
- Regulations concerning the discharge of air have to be fulfilled.
- Joists, beams and rafters shall not be cut or notched to install the appliance.

Electrician's Wiring Instructions

Your CEF30 exhaust fan requires a 230-240 volt, 50Hz electrical supply. All electrical work must be carried out by a qualified electrician and installed in accordance to AS/NZS3000

Wiring Details

- Connect wiring to the switch as shown in the appropriate electrical diagram below.



- Your CEF30 exhaust fan comes conveniently with a standard 3 pin plug for easy connection to a surface socket.

Test

Check power is switched on and that the switch activates properly.

For the exhaust fan to work efficiently, replacement air of a volume equivalent to what is being extracted must be able to enter the room. In general this air would be drawn under the door, through a vent in the door or from a slightly open window. If the room is airtight, the fan will function poorly.

Cleaning

- Ensure the exhaust fan is switched off before cleaning.
- Unclip the grille and wash in warm, soapy water. Always use a soft cloth, never use abrasives.
- Clean away any excess fluff from the inside of the body, motor, blade and brackets.