

Clipsal wilcoROWCO™ Metal Clad Multigang Enclosures and J-Box



WMMG2

WMMG3

WMMG4

WMJB1

Multigang Enclosure Specifications

Cast Aluminium
High Visibility yellow enclosure
Dimensions
Two gang
201H x 99W x 67mmD
Three gang
341H x 99W X 67mmD
Four gang
239H x 201W x 76mmD
Junction Box
99H x 99W x 97mmD
IP66 when fitted with matching cover
Multigangs must be fitted with Bridge Divider to assist with IP66 rating and cable management
External and accessible mounting facilities

These wilcoROWCO Metal Clad multigang enclosures are available with in modular 99mm widths that allow installers to mix and match either switches, sockets, DIN covers, Appliance Inlets and Control Stations on to one, two, three or four gang enclosures (bases).

Supply cabling and internal connections are also simplified within multigangs as they reduce the need for external conduits or shielded cabling

Likewise the WMJB1 junction box provides great versatility for general cable connections or creation of tailor made control stations.

Patented Bridge Divider

All multigangs are supplied with a patented bridge divider (Catalogue No. WM-BD). This unique Clipsal product ensures an IP66 rating is achieved without the need to add silicone. It will also assist with cable management within multigang enclosures. This provides peace of mind, increased safety and is a great time saver.

Applications

Heavy Industrial environments both indoors and outdoors where protection from dust, water, UV and impact is important.

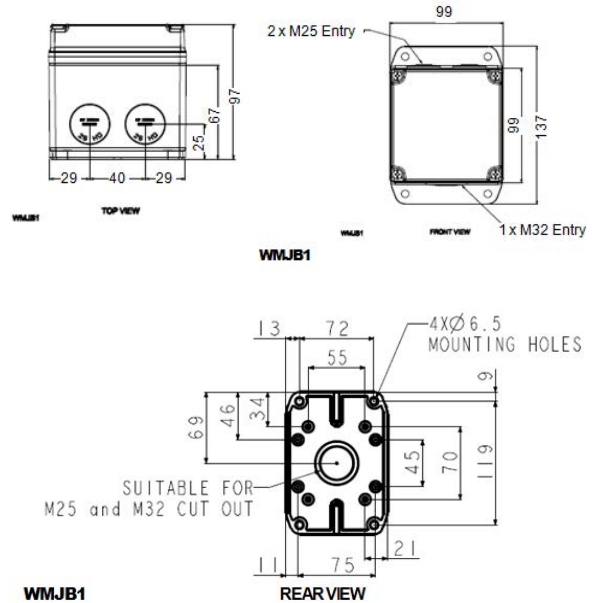
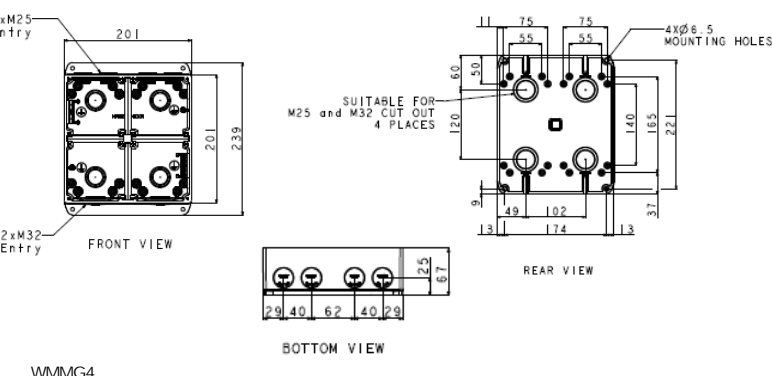
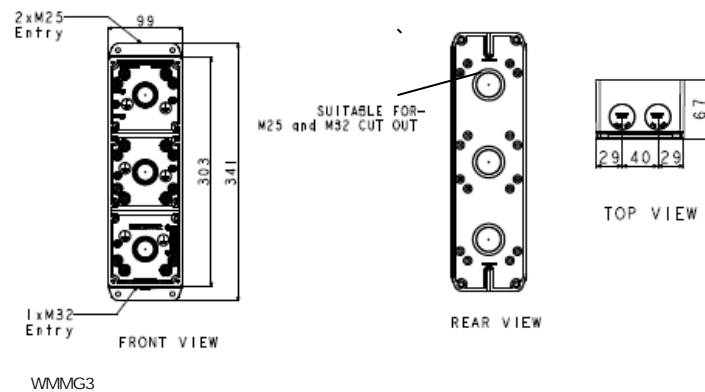
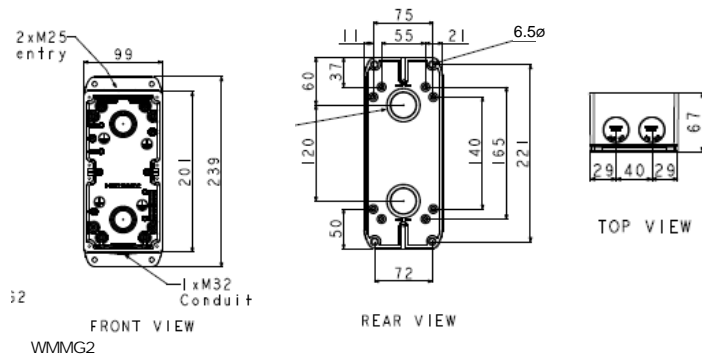
Features

- Heavy Duty Cast Aluminium
- IP66 Rated to IEC60529
- Modular two, three or four gang designs
- Versatile Junction Box for cable connections
- External and accessible mounting facilities
- WM-BD bridge divider with patented design for multigangs to ensure IP ratings are maintained without the requirement to add silicone to the WM-BD.


Ordering Details

Catalogue No.	Description
WMMG2	Enclosure (base only) Multigang 2 Gang
WMMG3	Enclosure (base only) Multigang 3 Gang
WMMG4	Enclosure (base only) Multigang 4 Gang
WM-BD	Bridge Divider for Multigangs
WMJB1	Junction Box 1 Gang

Dimensional Details



General Specifications

General	
Dimensions	WMMG2 – 240mm H x 99mm W x 67mm D WMMG3 – 341mm H x 99mm W x 67mm D WMMG4 – 239mm H x 201mm W x 67mm D WMJB1 – 99mm ² x 97mm D (137mm H with mounting feet)
Mounting Centres & Holes	WMMG2 – 221mm H x 72mm W WMMG3 – 323mm H 72mm W WMMG4 – 221H x 174mm W WMJB1 – 118.9mm H x 72mm W Diameter: Ø6.5mm
Conduit entries	WMMG2 – 2x Ø25mm, 1x Ø32mm WMMG3 – 2x Ø25mm, 1x Ø32mm WMMG4 – 4x Ø25mm, 2x Ø32mm WMJB1 – 2x Ø25mm, 1x Ø32mm
Safety Approval	IEC60529 Degrees of protection provided by enclosures (IP Code)
Environmental	RoHS Compliant 
Operating temperature	-20°C to +70°C ambient

Patented Bridge Divider
Catalogue No. WM-BD



Schneider Electric (Australia) Pty Ltd

33-37 Port Wakefield Road, Gepps Cross,
South Australia 5094

PO Box 132, Enfield Plaza,
South Australia 5085

National Customer Care Enquiries:
1300 2025 25

clipsal.com

Schneider Electric (Australia) Pty Ltd reserves the right to change specifications, modify designs and discontinue items without incurring obligation and whilst every effort is made to ensure that descriptions, specifications and other information in this document are correct, no warranty is given in respect thereof and the company shall not be liable for any error therein.

© 2015 Schneider Electric. All Rights Reserved.

Trademarks are owned by Schneider Electric Industries SAS or its affiliated companies.