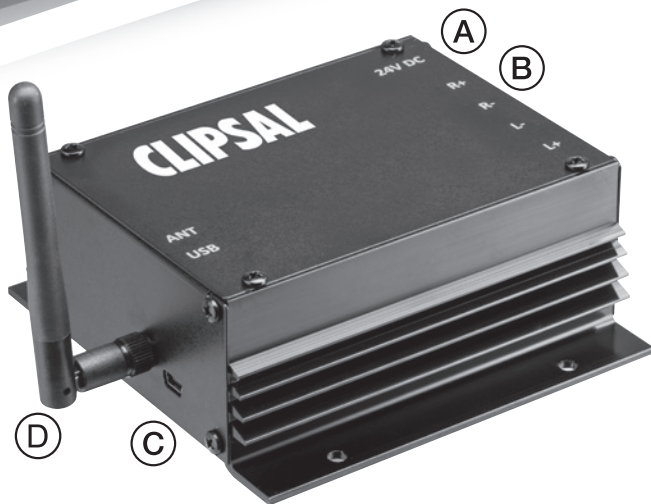


Bluetooth® In-Ceiling Stand Alone Amplifier

CLI-5600BTSA50



Installation Instructions

- (A) Power Input 24V DC
- (B) Speaker Terminals
- (C) Mini USB
- (D) Hi-Gain *Bluetooth* Antenna

Includes:

CLI-5600BTSA50 *Bluetooth* In-Ceiling Amplifier
Hi Gain *Bluetooth* Antenna
24V 3.75 Amp Power Supply.

This is a class A product. In a domestic environment this product may cause radio interference, in which case the user may be required to take adequate measures

Cabling Instructions

Wiring

Run low-loss speaker cable from CLI-5600BTSA50 amplifier terminals (B) to speakers

Cable Requirement

Speaker - 12-24 AWG Low Loss Speaker Cable

Note

Recommended cables are run according to TS009 regulations to reduce interference.

Hardware Connection

1. Connect speaker cable from amplifier terminals (B)
For optimum performance ensure that speaker polarity is kept consistent:
 - positive terminal of (B) to red terminal on left speaker
 - negative terminal of (B) to black terminal on left speaker
 - the same wiring must apply to the right speaker connections.
2. Screw antenna supplied onto antenna input (D).
3. Place CLI-5600BTSA50 in ceiling space within easy reach of access hole if available or closest to the area where *Bluetooth* reception is required.

Power Connection

When cabling to all system components has been completed and checked, plug power adapter (supplied) into mains and plug DC jack into Power Input (A) on CLI-5600BTSA50.

Troubleshooting

My music is not coming out of the stereo speakers

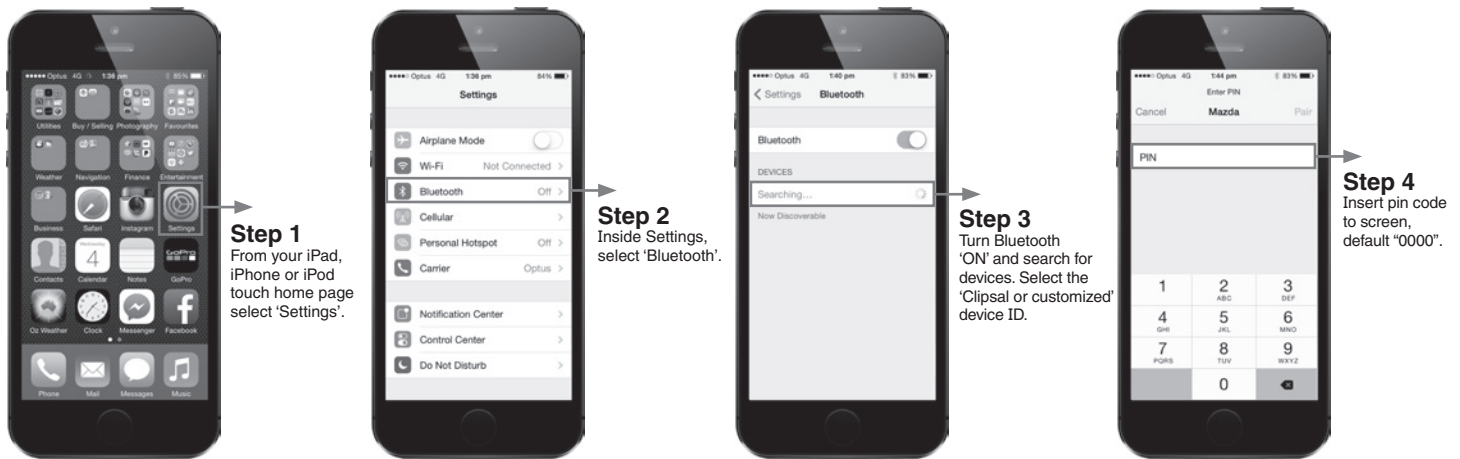
- Ensure the volume on your iPad, iPhone, iPod touch or other *Bluetooth* enabled device is set to a suitable level.
- Ensure all connections are correct and firmly connected to the CLI-5600BTSA50.
- Ensure your iPad, iPhone, iPod touch or other *Bluetooth* enabled device is within the 15m range of the amplifier.*

* The communication range quoted is calculated based on an unobstructed line of sight test under optimum conditions. Actual range will vary depending on conditions, and is often less than the maximum possible. Your actual range will be limited by several factors including, but not limited to, electromagnetic interference and obstructions.

User Manual

Initial Pairing to your *Bluetooth* In-Ceiling Amplifier

Example provided is to pair to an iPad or iPhone only. Other *Bluetooth* enabled devices such as your laptop may require a pin code to pair eg. default pin code '0000'. Please refer to equipment user manual for more information.



Refer to [Clipsal.com/Trade/Support & Downloads](http://Clipsal.com/Trade/Support%20&%20Downloads) under the Tools section for separate instructions on how to conveniently rename your *Bluetooth* Clipsal device ID to identify different zones and change PIN code.

Disconnecting/Changing Connected Device

If you want to switch from your iPad, iPhone, iPod touch or other *Bluetooth* enabled device to another, follow these steps:

1. access the *Bluetooth* settings (as above) and turn the *Bluetooth* function to OFF of the device
2. the *Bluetooth* in-ceiling amplifier can now be connected to a different device.
3. follow the directions in "Initial pairing to your *Bluetooth* In-Ceiling Amplifier" to connect a different device.

Reconnecting Your Device

If you move out of range* (>15m) or turn off the *Bluetooth* function on your iPad, iPhone, iPod touch or other *Bluetooth* enabled device, the *Bluetooth* In-Ceiling Amplifier will disconnect. To reconnect, simply access the *Bluetooth* settings on your device, ensuring *Bluetooth* function is set to ON and select the Clipsal or customized device ID, then enter the PIN code.

Warranty

1. Schneider Electric (Australia) Pty Ltd warrants your product to be free from defects in material and workmanship for a period of two (2) years from the date of purchase.
2. The warranty applies only to the original consumer purchaser and only to products used in normal use and service. If this product is found to be defective, Schneider Electric (Australia) Pty Ltd's only obligation, and your exclusive remedy, is the repair or replacement of the product at Schneider Electric (Australia) Pty Ltd discretion, provided that the product has not been damaged through misuse, abuse, accident, modifications, alteration, neglect or mishandling (excluding any labour cost relating to removal or reinstallation of product and transport cost). This warranty shall not apply to any product, which is found to be improperly installed, setup or used in any way not in accordance with the instructions supplied with the product.
3. This Schneider Electric (Australia) Pty Ltd Integrated Systems Product is guaranteed against faulty workmanship and materials for a period of two (2) years from the date of installation.
4. If your product fails to operate satisfactorily, please return it to the point of purchase or to your nearest Schneider Electric (Australia) Pty Ltd office.
5. Schneider Electric (Australia) Pty Ltd reserves the right, at its discretion, to either repair free of parts and labour charges, replace or offer refund in respect to any article found to be faulty due to materials, parts or workmanship.
6. Schneider Electric (Australia) Pty Ltd does not warrant and specifically disclaims any warranty, whether expressed or implied, of fitness for a particular purpose other than the warranty contained herein. Not implied warranty on this product, created by state law, shall extend beyond the term of this warranty unless such law otherwise provides.
7. Schneider Electric (Australia) Pty Ltd specifically disclaims any liability and shall not be liable for any consequential or incidental loss or damage, including, but not limited to, damages to any equipment with which this product is used.
8. No agent, representative, dealer or employee of the company has the authority to increase or alter the obligations or terms of this warranty. Schneider Electric (Australia) Pty Ltd reserves the right to change specifications or designs described in this manual without notice and without obligation.

Schneider Electric (Australia) Pty Ltd

Contact us: clipsal.com/feedback

National Customer Care Enquiries:

Tel 1300 2025 25 Fax 1300 2025 56

clipsal.com

Schneider Electric (Australia) Pty Ltd reserves the right to change specifications, modify designs and discontinue items without incurring obligation and whilst every effort is made to ensure that descriptions, specifications and other information in this catalogue are correct, no warranty is given in respect thereof and the company shall not be liable for any error therein.

© 2014 Schneider Electric. All Rights Reserved.

Trademarks are owned by Schneider Electric Industries SAS or its affiliated companies.

SEAU117103 June 2014