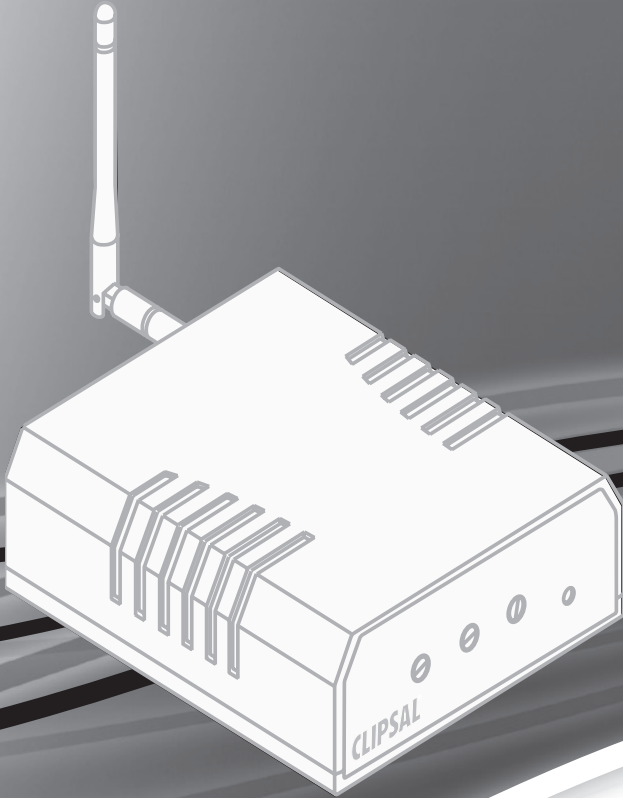


**CLIPSAL**<sup>®</sup>

by Schneider Electric



**Professional *Bluetooth*  
Audio Receiver**

**560011BT**



Installation Instructions

## Contents

1.0	Introduction .....	3
2.0	Installing the <i>Bluetooth</i> Audio Receiver .....	4
2.1	Hardware Connection .....	4
3.0	Connecting the Power Supply .....	5
4.0	Initial Pairing to a <i>Bluetooth</i> -Enabled Device .....	6
5.0	Disconnecting or Changing the Connected Device .....	7
6.0	Reconnecting After Moving Out of Range .....	7
7.0	Troubleshooting.....	7
8.0	Warranty .....	8

The *Bluetooth*® word mark and logos are registered trademarks owned by Bluetooth SIG, Inc. Any use of the word mark and logos is under licence.

iPad and iPhone are registered trademarks of Apple, Inc.

Clipsal is a registered trademark of Schneider Electric SAS.

All other trademarks are property of their respective owners.

## 1.0 Introduction

The Professional *Bluetooth* Audio Receiver sends audio program from your *Bluetooth*-enabled device to an audio amplifier, such as the C-Bus® Multi-Room Audio Matrix Switcher or Audio Amplifier.

The receiver's front panel includes bass, treble and output level controls (see Figure 1) and uses standard audio cables to connect to the audio system.

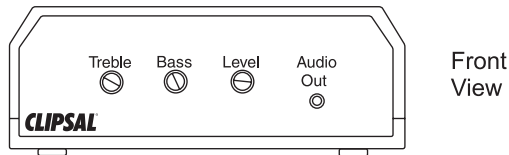


Figure 1. Professional *Bluetooth* Audio Receiver front panel details

These installation instructions tell you how to do the following:

- connect the hardware to a power outlet and the audio system
- perform the initial pairing between the receiver and the *Bluetooth*-enabled device
- disconnect or change the connected device
- reconnect the receiver to a *Bluetooth*-enabled device.

The Professional *Bluetooth* Audio Receiver includes the following components:

- *Bluetooth* Audio Receiver unit for horizontal or vertical mounting
- power supply with cord and mini-USB power connector
- antenna with 90° joint and swivel mount
- audio cable with male 3.5mm stereo to male RCA phono plugs.

### Note:

To connect the *Bluetooth* Audio Receiver to the 560110R MRA 10-Watt Remote Amplifier or the front panel input on the 560884/2E MRA Matrix Switcher, you will need a male 3.5mm stereo to male 3.5mm stereo audio cable that is available at electronics stores.

## 2.0 Installing the *Bluetooth* Audio Receiver

Before you install the wireless *Bluetooth* connection between the *Bluetooth* Audio Receiver and your *Bluetooth*-enabled device, you need to connect the receiver to your home stereo system and to a source of AC power.

### 2.1 Hardware Connection

Select a location for the *Bluetooth* Audio Receiver, where the receiver's power cable and the audio cable to the amplifier will not be in the way of normal activity. Usually, you can place the receiver near the amplifier and use a nearby power outlet. Figure 2 shows the connection points for the *Bluetooth* Audio Receiver.

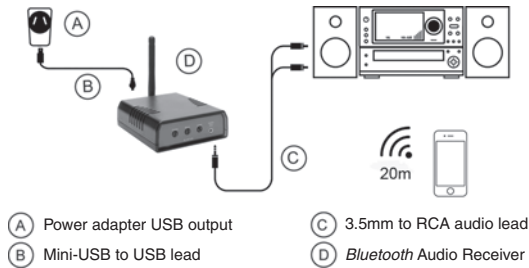


Figure 2. Hardware connection diagram

To set up the *Bluetooth* Audio Receiver, refer to Figure 2 and follow these steps:

1. Connect the 3.5mm end of the audio cable (C) to the jack on the front panel of the *Bluetooth* Audio Receiver (D).
2. Connect the RCA plug ends of the cable to the stereo audio input on your home stereo system.

**Note:** if you are connecting to a C-Bus Multi-Room Audio Amplifier, 560110R, the audio cable requires a 3.5mm stereo plug at the amplifier end.

3. Connect the antenna to the back panel of the *Bluetooth* Audio Receiver. Tighten the retaining nut with your fingers. Do not use pliers or other tools, as this could damage the antenna.

### 3.0 Connecting the Power Supply

The power supply, outlet adapter and USB power cord are supplied with the *Bluetooth* Audio Receiver.

#### **Warning: Avoid Electrical Shock**

Use only the power supply provided with the *Bluetooth* Audio Receiver. Do not attempt to disassemble or modify the adapter or the power cable. There are no user serviceable parts inside.

To install the AC outlet adapter in the power supply body, follow the steps shown in Figure 3:

1. Align the outlet adapter. Note the position of the latch and the mating part of the outlet adapter.
2. Press and hold the button on the power supply body.
3. Insert the outlet adapter in the power supply body and then release the button.
4. Make sure that the latch holds the outlet adapter securely in place.

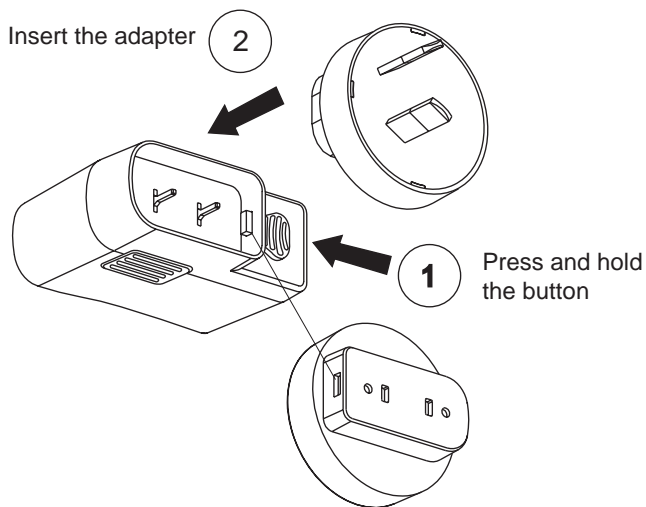


Figure 3. Installing the outlet adapter in the power supply body

Connect the USB cable to the power supply and to the *Bluetooth* Audio Receiver back panel. Plug the power supply into a suitable power outlet.

Place the cable so that it will not interfere with normal activities. Whenever power is supplied to the *Bluetooth* Audio Receiver, a blue LED will illuminate on the back panel of the receiver.

## 4.0 Initial Pairing to a *Bluetooth*-Enabled Device

The device that is to be paired with the *Bluetooth* Audio Receiver should be within 20 metres of the receiver. At greater distances the device might disconnect, requiring reconnection.

When connected, the blue LED on the *Bluetooth* Audio Receiver will flash slowly, returning to a constant blue state when a connection is lost.

To connect to an iPad or iPhone, follow these steps:

1. From the iPad or iPhone home page, select 'Settings'.
2. From the Settings menu, select 'General'.
3. From the General menu, select '*Bluetooth*'.
4. Turn *Bluetooth* 'ON' and search for devices. Select the 'Clipsal' device ID.
5. When connected, adjust the Treble, Bass and Level controls



**Note:** For *Bluetooth*-enabled devices other than those above, refer to the instructions for your device. To rename the receiver device IDs for different zones in your home, you will need to download software from the following location:

[www.clipsal.com/cis/technical](http://www.clipsal.com/cis/technical) (then select 'Downloads').

Your PC must use Windows XP or Windows 7 and have at least 6.5MB of free disk space.

iPad and iPhone are registered trademarks of Apple Inc. Clipsal by Schneider Electric makes no claims or warranties regarding the compatibility or performance with any specific type of *Bluetooth*-enabled device. Refer to the instructions provided with your mobile device.

## 5.0 Disconnecting or Changing the Connected Device

If you want to switch from one *Bluetooth*-enabled device to another, follow these steps:

1. Access the *Bluetooth* settings on your portable device and turn the *Bluetooth* function to 'OFF'.
2. The *Bluetooth* Audio Receiver can now be connected to a different device.
3. Follow the steps in section 4.0 for "Initial Pairing to a *Bluetooth*-enabled Device" to connect to a new device.

## 6.0 Reconnecting After Moving Out of Range

If you move out of range (a distance of over 20 metres), or if you switch OFF the *Bluetooth* function on your *Bluetooth*-enabled device, the receiver will disconnect.

To reconnect, simply switch the *Bluetooth* setting 'ON' and reselect the device.

**Note:** The communication range of 20 metres quoted is based on an unobstructed line of sight test, under optimum conditions. Actual usable range in your home will vary depending on conditions such as obstructions and electromagnetic interference.

## 7.0 Troubleshooting

If music is not coming from the stereo speakers, try these solutions:

- Check that the *Bluetooth* Audio Receiver is powered ON and the blue LED is ON. Ensure that the power cable (mini-USB plug) is firmly attached to the receiver.
- Make sure that the audio cable is correctly installed and firmly connected to the stereo system and the *Bluetooth* Audio Receiver.
- Check that the following home stereo system settings are set correctly: Input Selection, Volume Level and Speaker Selection.
- Check that the volume on your *Bluetooth*-enabled device is set to a suitable level.
- Verify that the blue LED on your *Bluetooth* Audio Receiver is ON and flashing slowly, indicating that your portable device and the *Bluetooth* Audio Receiver are paired correctly.
- Ensure that your portable device is within 20 metres of the *Bluetooth* Audio Receiver and that the antenna is correctly installed on the receiver.
- Ensure that there is a clear line of sight (no solid obstructions) between the portable device and the *Bluetooth* Audio Receiver.

If the problem remains after trying these solutions, contact your local sales office for assistance.

## 8.0 Warranty

The Professional *Bluetooth* Audio Receiver is covered by a two-year warranty against manufacturing defects.

1. The benefits conferred herein are in addition to, and in no way shall be deemed to derogate; either expressly or by implication, any or all other rights and remedies in respect to the Clipsal product, which the consumer has under the Commonwealth Competition and Consumer Act or any other similar State or Territory Laws.
2. The warrantor is Schneider Electric (Australia) Pty Ltd of 33 - 37 Port Wakefield Road, Gepps Cross, South Australia 5094. With registered offices in all Australian States.
3. This Clipsal product is guaranteed against faulty workmanship and materials for a period of two (2) years from the date of purchase.
4. Schneider Electric (Australia) Pty Ltd reserves the right, at its discretion, to either repair free of parts and labour charges, replace or offer refund in respect to any article found to be faulty due to materials, parts or workmanship.
5. This warranty is expressly subject to the Clipsal product being installed, wired, tested, operated and used in accordance with the manufacturer's instructions.
6. All costs of a claim shall be met by Schneider Electric (Australia) Pty Ltd, however, should the product that is the subject of the claim be found to be in good working order all such costs shall be met by the claimant.
7. When making a claim the consumer shall forward the Clipsal product to the nearest office of Clipsal by Schneider Electric with adequate particulars of the defect within 28 days of the fault occurring. The product should be returned securely packed, complete with details of the date and place of purchase, description of load, and circumstances of malfunction.

---

**Schneider Electric (Australia) Pty Ltd**

Contact us: [clipsal.com/feedback](http://clipsal.com/feedback)

**National Customer Care Enquiries:**

**Tel 1300 2025 25**

**Fax 1300 2025 56**

**clipsal.com**

Schneider Electric (Australia) Pty Ltd reserves the right to change specifications, modify designs and discontinue items without incurring obligation and whilst every effort is made to ensure that descriptions, specifications and other information in this catalogue are correct, no warranty is given in respect thereof and the company shall not be liable for any error therein.

© 2014 Schneider Electric. All Rights Reserved.  
Trademarks are owned by Schneider Electric Industries SAS or its affiliated companies.