

CLIPSAL[®]

by **Schneider** Electric

**F Type Shielded
Masthead Amplifier
3105MH35U18V**



DIGITAL
TERRESTRIAL
TELEVISION READY



Installation Instructions

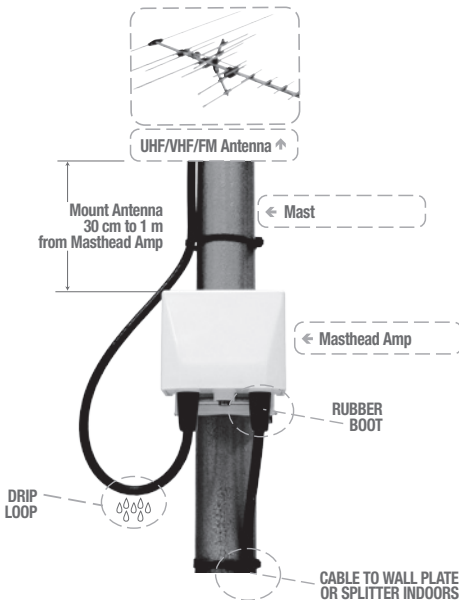
1.0 Features

- For outdoor use.
- F Type connection with low noise and high gain.
- Amplifies low level analogue and digital VHF/UHF signals.
- Jumper configurable FM trap.
- Separate UHF and VHF gain adjustments.
- Galvanised mounting U-bolt.
- Weatherproof cover.
- Power LED indicator.

Power

- The masthead amplifier is powered from an AC or DC power inserter connected in-line between the TV set and the out connector of the amplifier.
- The power LED indicates that power is available at the amplifier.
- To provide inline power to the masthead, 'power passing' components must be used (i.e. splitter and wall sockets with power pass capability).

2.0 Installation

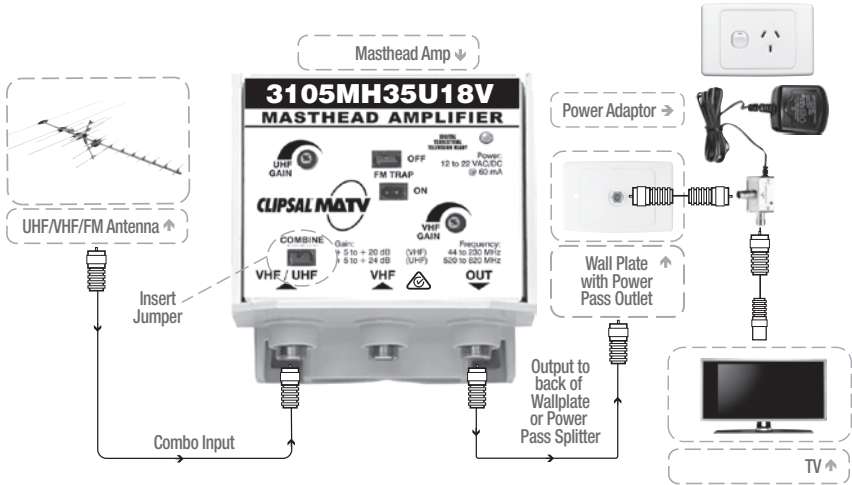


Masthead Amp
Must be installed in this orientation to maintain weatherproof rating.

Rubber Boot
Must be installed to maintain weatherproof rating.

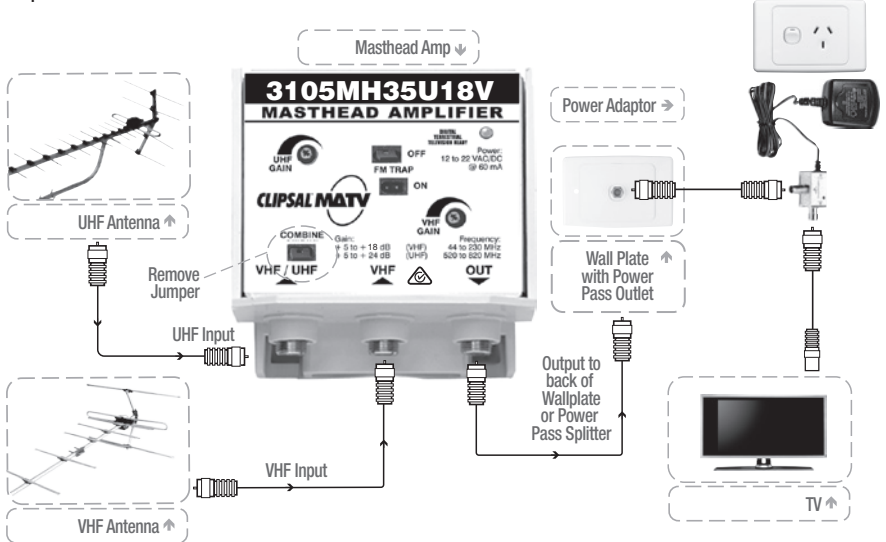
Connection Option 1

Combined UHF/VHF antenna



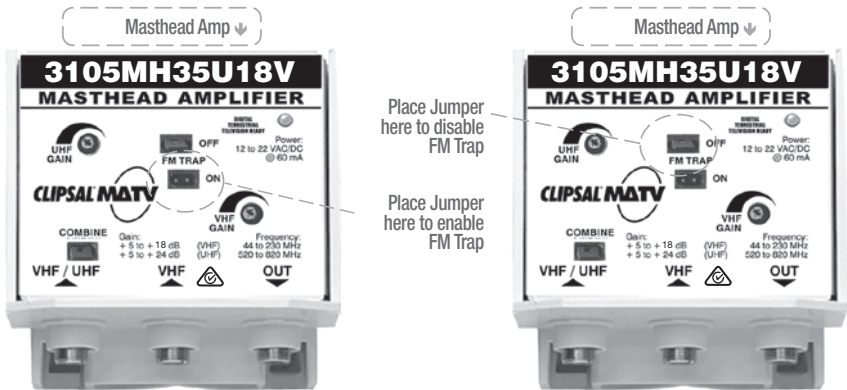
Connection Option 2

Separate UHF/VHF antennas



FM Trap

The FM trap can be disabled or enabled as shown below with the jumper supplied.

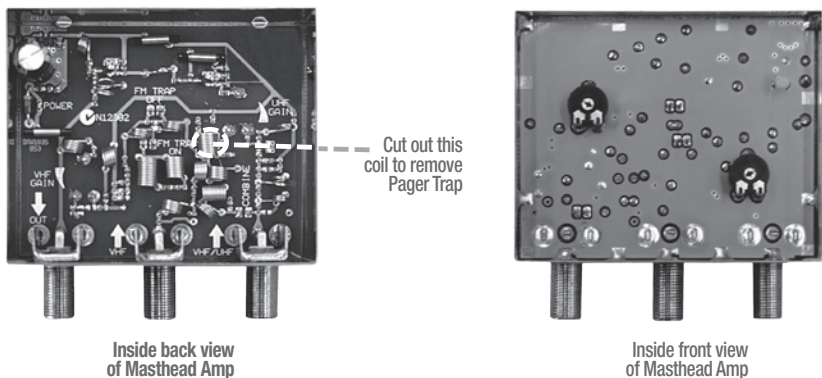


Pager Trap

The pager trap will normally attenuate channel 5A. This channel can be amplified by disabling the pager trap. To do this the coil must be cut out as shown below, using suitable pliers or cutters.

Important: Once the pager trap has been disabled, the pager trap cannot be reinstalled.

To access the pager trap the metal casing must be removed from the plastic housing, then remove the rear metal cover by using a suitable tool.



3.0 Specifications

	3105MH35U18V
Frequency	VHF: 44 to 230MHz UHF: 520 to 820MHz
Max. Gain	VHF B1: 15dB VHF B111: 21dB UHF: 35dB
Gain Adjustment	VHF: + 10dB UHF: + 15dB
FM Trap	- 30dB @ 88 to 108MHz
Pager Trap	25 dB @ 148MHz
Output Level	101dBμV
Noise Figure	VHF: < 1.5dB UHF: < 3dB
Power	12 to 24V DC @ 70mA 14 to 22V AC @ 70mA

Specifications are subject to change without notice.



4.0 Warranty Statement

1. The benefits conferred herein are in addition to, and in no way shall be deemed to derogate; either expressly or by implication, any or all other rights and remedies in respect to the Clipsal product, which the consumer has under the Commonwealth Trade Practices Act or any other similar State or Territory Laws.
2. The warrantor is Schneider Electric, with registered offices in all South Australian states.
3. This Clipsal product is guaranteed against faulty workmanship and materials for a period of one (1) year from the date of installation.
4. Schneider Electric (Australia) Pty Ltd reserves the right, at its discretion, to either repair free of parts and labour charges, replace or offer refund in respect to any article found to be faulty due to materials, parts or workmanship.
5. This warranty is expressly subject to the Clipsal product being installed, wired, tested, operated and used in accordance with the manufacturer's instructions.
6. All costs of a claim shall be met by Schneider Electric, however should the product that is the subject of the claim be found to be in good working order all such costs shall be met by the claimant.
7. When making a claim the consumer shall forward the Clipsal product to the nearest office of Clipsal by Schneider Electric with adequate particulars of the defect within 28 days of the fault occurring. The product should be returned securely packed, complete with details of the date and place of purchase, description of load, and circumstances of malfunction.

Schneider Electric (Australia) Pty Ltd

Contact us: clipsal.com/feedback

National Customer Care Enquiries:

Tel 1300 2025 25

Fax 1300 2025 56

clipsal.com

Schneider Electric (Australia) Pty Ltd reserves the right to change specifications, modify designs and discontinue items without incurring obligation and whilst every effort is made to ensure that descriptions, specifications and other information in this catalogue are correct, no warranty is given in respect thereof and the company shall not be liable for any error therein.

© 2014 Schneider Electric. All Rights Reserved.
Trademarks are owned by Schneider Electric Industries SAS or its affiliated companies.