

Modena 8000 Series Vertical

Installation Instructions

CLIPSAL[®]

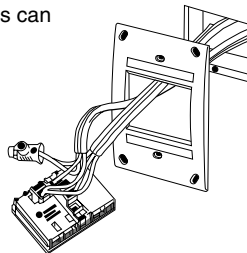
by Schneider Electric

General Instructions

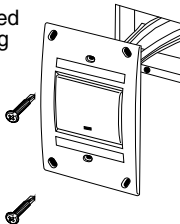
- It is illegal for persons other than those authorised by legislation, to work on the fixed wiring of any electrical installation.
- All installations must be in accordance with local and state Electrical Wiring Regulations and Building Codes of Practice.
- **CLEANING** - To clean, simply use a cloth dampened with water only. Cleaning agents are not recommended, as their use may harm the product and void warranty claims.

Fitting Instructions

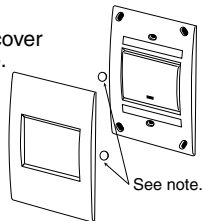
1. Modular accessories can be wired before or after clipping into a grid.



2. Modules should be clipped into grids before screwing product to the wall.



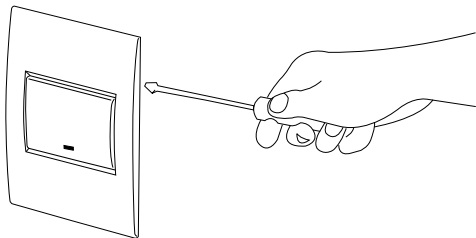
3. Once the grid is firmly attached to the wall the cover can be clipped into place.



Note: When fitting a metal plated cover to a grid that has been mounted using the centre mounting screws, screw caps must be fitted.

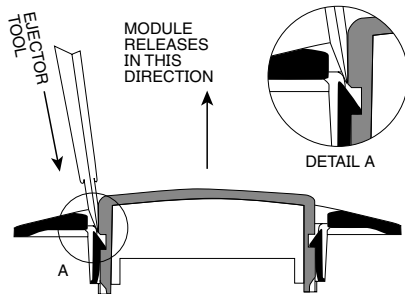
Cover Removal

To remove cover insert a flat blade screwdriver between cover and grid tab, and gently lever apart.



Module Removal

To remove modules use ejector tool as shown below.



Schneider Electric (Australia) Pty Ltd

Contact us: clipsal.com/feedback

National Customer Care Enquiries:

Tel 1300 2025 25

Fax 1300 2025 56

clipsal.com

Schneider Electric (Australia) Pty Ltd reserves the right to change specifications, modify designs and discontinue items without incurring obligation and whilst every effort is made to ensure that descriptions, specifications and other information in this catalogue are correct, no warranty is given in respect thereof and the company shall not be liable for any error therein.

© 2011 Schneider Electric. All Rights Reserved.

Trademarks are owned by Schneider Electric Industries SAS or its affiliated companies.