



NEW PRODUCT DATA AND APPLICATION SHEET

CATALOGUE

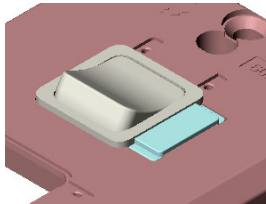
681VIDWH Vertical 1 Gang with ID
 681HIDWH Horizontal 1 Gang with ID
 682VIDWH Vertical 2 Gang with ID
 682HIDWH Horizontal 2 Gang with ID
 683HIDWH Horizontal 3 Gang with ID
 684VIDWH Vertical 4 Gang with ID
 684HIDWH Horizontal 4 Gang with ID
 600ID Labelling Kit

BARCODE

9416175168543
 9416175168550
 9416175168567
 9416175168574
 9416175168581
 9416175168598
 9416175168604
 9416175175169

DESCRIPTION

Vertical and Horizontal 600 Series Module Plates with Identification Facility



BOX QUANTITY 10

OUTER QUANTITY 100

FEATURES

Standard 600 Series plates, suits Cat 144 Flush Box (84mm centres).
 ID Lens Facility
 Enables easy identification of circuits or switch function.
 Clips in and out separately – don't need to disassemble the whole plate.
 Lens' pre-assembled in the plate.
 Easy to install or change if required.
 Available in White Only
 Labelling kit available, with perforated labelling sheets to size.
 Supplied as a package - separately. Labels can be oriented vertically or horizontally.

SPECIFICATIONS

APPLICATIONS

Where the identification of circuits or switch function is required. Ideal for the data industry. Excellent for outfitting, or refitting offices, improves efficiency.
 Suits full range of our PDL data clips: 619MAC; 619MKC; 619MM; 619MD. As well as lid versions.

FAQ's

This is a slightly different and improved product to the one previously manufactured as a special run by PDL. The fitted lens is removable for easy installation or replacement of labels. There are increased options of orientating the lens on the plate.