

Wall/Eaves Mounted Outlet CEFOUTLETWAL

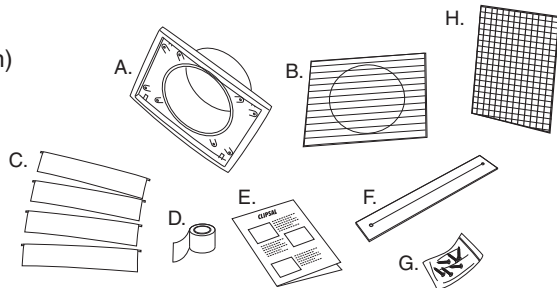
The following instructions describe the various configurations of the wall/eaves outlet with the assembly and installation process.

The outlet is designed for installation on either a vertical side wall or under the horizontal eaves. The wall can be either brick, timber, metal or plasterboard.

It includes a single fixed louvre suitable for either a wall or eaves location plus four gravity shutters suitable for wall mounting.

Included With This Outlet

- A. 1 x Outlet Frame
- B. 1 x Fixed Louvre (clip-in)
- C. 4 x Gravity Shutters (clip-in)
- D. 2M x Roll of Duct Tape
- E. Installation Instructions
- F. Template
- G. Screws
- H. Insect Screen



Not Included With This Outlet

- Optional Brickwork Chassis (CEFBRICKBKT) to simplify the assembly of this outlet onto brick walls.
- Silicon sealant (or similar) to prevent water ingress around this outlet.

Hole Mark Location

Use the template to mark the hole location, shape and size. Use the circular shape to cut materials like plasterboard or timber and use the rectangular shape for brick walls.

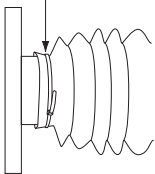
Cut Hole For Outlet

Cut the hole for the outlet frame and drill the screw fixing locations.

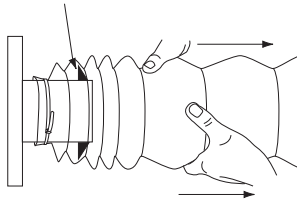
Attach Flexible Ducting

Attach the flexible ducting to the frame using the supplied cable tie. Pull the ducting until it stops, then use the supplied duct tape to seal the joint. Fix the outlet frame to the wall or eaves.

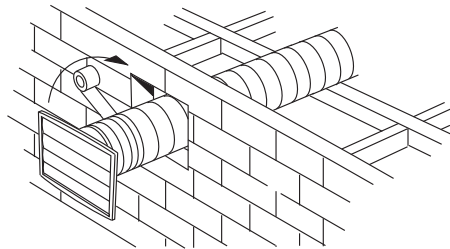
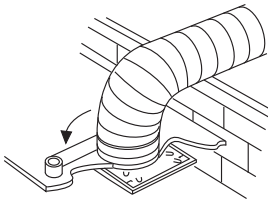
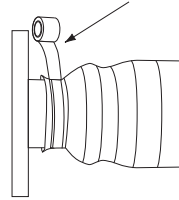
1. Attach using supplied cable tie



2. Pull ducting over barbs until it stops



3. Seal the joint with supplied duct tape

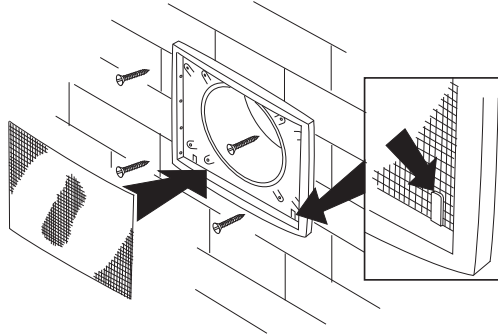


Insert Insect Screen

If you wish to use an insect screen insert it under the four retaining clips.

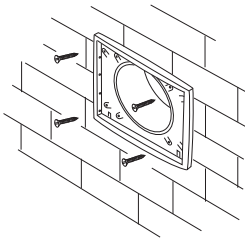
Important Note: The insect screen may require regular cleaning to remove dust build-up that restricts the airflow from the fan and forces the fan to work harder.

Failure to clean the insect screen may void the fan warranty.



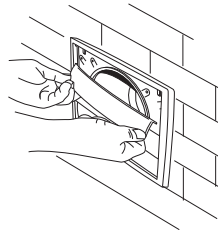
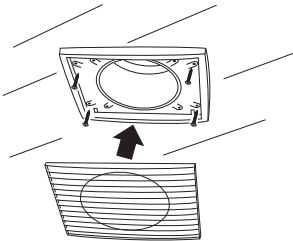
Clip-in Chosen Cover

Once the frame has been mounted select either the fixed louvre or the gravity shutters and clip them into the outlet frame.



1. Outlet mounted under eaves

2. Outlet mounted to side wall

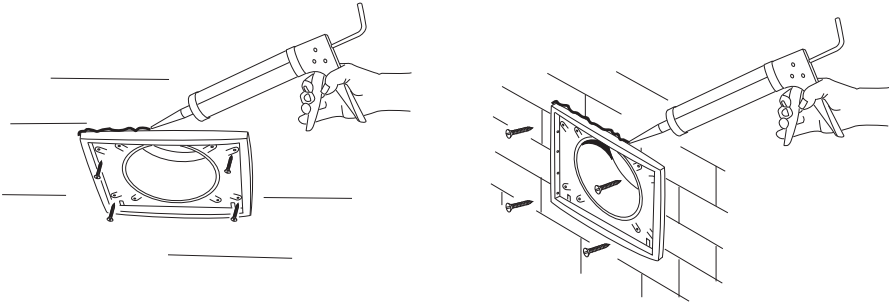


A. Insert one end of the shutter into the frame.

B. Bend the shutter slightly and insert the other end into the frame.

Seal Frame

To protect against water ingress, seal around the outside of the frame with a silicon sealant (or similar).



Service & Maintenance

Regular cleaning is recommended using warm soapy water. Do not use cleaning agents or solvents when cleaning this product. If you have installed an insect screen, this may require regular cleaning to remove dust build-up. Unclip the fixed louvre or gravity shutters, remove the screen from the frame and wash the insect screen in warm soapy water.

Discolouration of the plastic may occur over time. The plastic includes additives to protect against UV, however long term exposure to UV radiation may still result in discolouration.

Clipsal Australia Pty Ltd

A member of Schneider Electric

Contact us: clipsal.com/feedback

National Customer Care Enquiries:

Tel 1300 2025 25

Fax 1300 2025 56

clipsal.com

Clipsal Australia Pty Ltd reserves the right to change specifications, modify designs and discontinue items without incurring obligation and whilst every effort is made to ensure that descriptions, specifications and other information in this catalogue are correct, no warranty is given in respect thereof and the company shall not be liable for any error therein.

© Clipsal Australia Pty Ltd. The identified trademarks and copyrights are the property of Clipsal Australia Pty Ltd unless otherwise noted.