

DATA SHEET | TELEPHONE ACCESSORIES | MODULAR PLUGS RJ11, RJ12 & RJ45

All Clipsal Telephone Accessories are RoHS Compliant.

CATALOGUE

3110P11FT50

3110P12FT50

3110P45FT50

DESCRIPTION

RJ11 Plug 4P4C Flat Standard

RJ12 Plug 6P6C Flat Standard

RJ45 Plug 8P8C Flat Standard



3110P11FT50



3110P12FT50



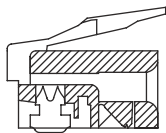
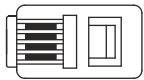
3110P45FT50

FEATURES

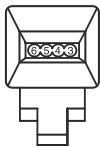
- For telephone cable (Flat Standard)
- Housing: UL - 94V-V2, PC
- For standard wire 24 to 28AWG
- Packs of 50.

TECHNICAL DRAWING

3110P11FT50

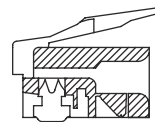


RJ11

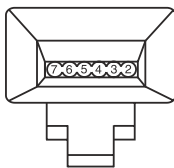


6	5	4	3	
TEL	RED	WHITE/ BLUE	BLUE	BLACK
CAT 3	ORANGE	BLUE/ WHITE	BLUE	ORANGE/ WHITE

3110P12FT50

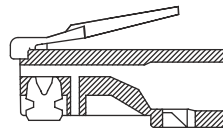
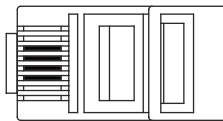


RJ12

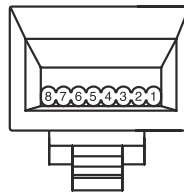


7	6	5	4	3	2
GREEN	ORANGE	BLUE/ WHITE	BLUE	ORANGE/ WHITE	GREEN/ WHITE

3110P45FT50



RJ45



568A	8	7	6	5	4	3	2	1
BROWN	BROWN/ WHITE	ORANGE	BLUE/ WHITE	BLUE	ORANGE/ WHITE	GREEN	ORANGE	GREEN/ WHITE
568B	BROWN	BROWN/ WHITE	GREEN	BLUE/ WHITE	BLUE	GREEN/ WHITE	ORANGE	ORANGE/ WHITE

Product of Clipsal Australia Pty Ltd
A member of Schneider Electric

Contact us clipsal.com/feedback

National Customer Service Enquiries:

1800 728 728

clipsal.com.au

Clipsal Australia Pty Ltd reserves the right to change specifications, modify designs and discontinue items without incurring obligation and whilst every effort is made to ensure that descriptions, specifications and other information in this document are correct, no warranty is given in respect thereof and the company shall not be liable for any error therein.

© Clipsal Australia Pty Ltd

The identified trademarks and copyrights are the property of Clipsal Australia Pty Ltd unless otherwise noted.