

**DALlinfinity™**  
Soft Wiring 5 Pole

**CLIPSAL®**

by **Schneider Electric**

# Plug & Play Solution

[clipsal.com](https://clipsal.com)

**CABLE MANAGEMENT**

## Reduce labour costs

### What is DALI?

DALI stands for Digital Addressable Lighting Interface. It is an International Standard (IEC 62386) lighting control protocol that provides a universal language for electronic lighting and control devices (lighting controllers) to communicate with each other.

The DALI protocol enables Clipsal's dimmable ballasts, transformers, LED drivers, relay modules, emergency fittings and controllers to be mixed and matched into a single lighting control system.

A DALI operated system provides lighting designers, installers, building owners, facility managers and end users with a powerful and flexible digital lighting control solution that can integrate a wide range of monitoring and feedback features.

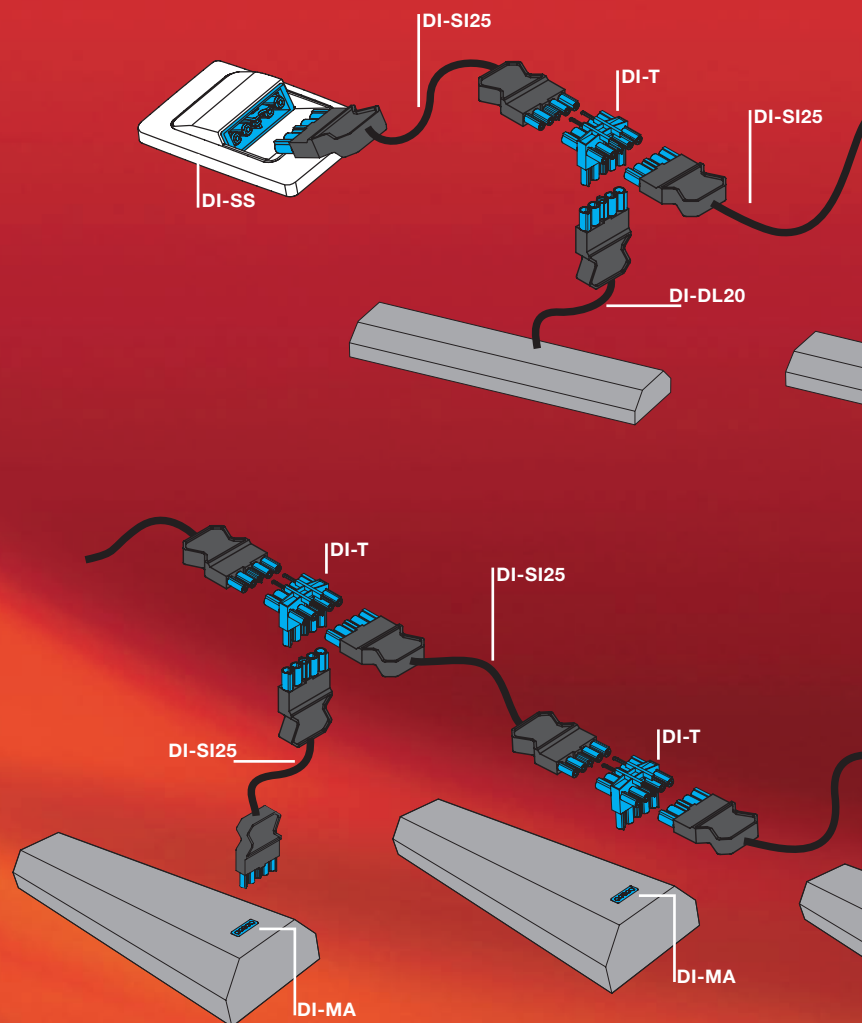
### Embrace a new way of thinking

The DALlinfinity Soft Wiring 5 Pole solution has a flexible Plug and Play design that provides power and control wires to lighting, emergency lighting and control devices, such as switches and sensors.

Its unique five-pole installation couplers and cabling design provides the full advantages of a true Plug and Play solution required by lighting designers and end user tenants in modern buildings.

The DALlinfinity system consists of a simple range of components that can be configured to suit any type of commercial installation requirements.

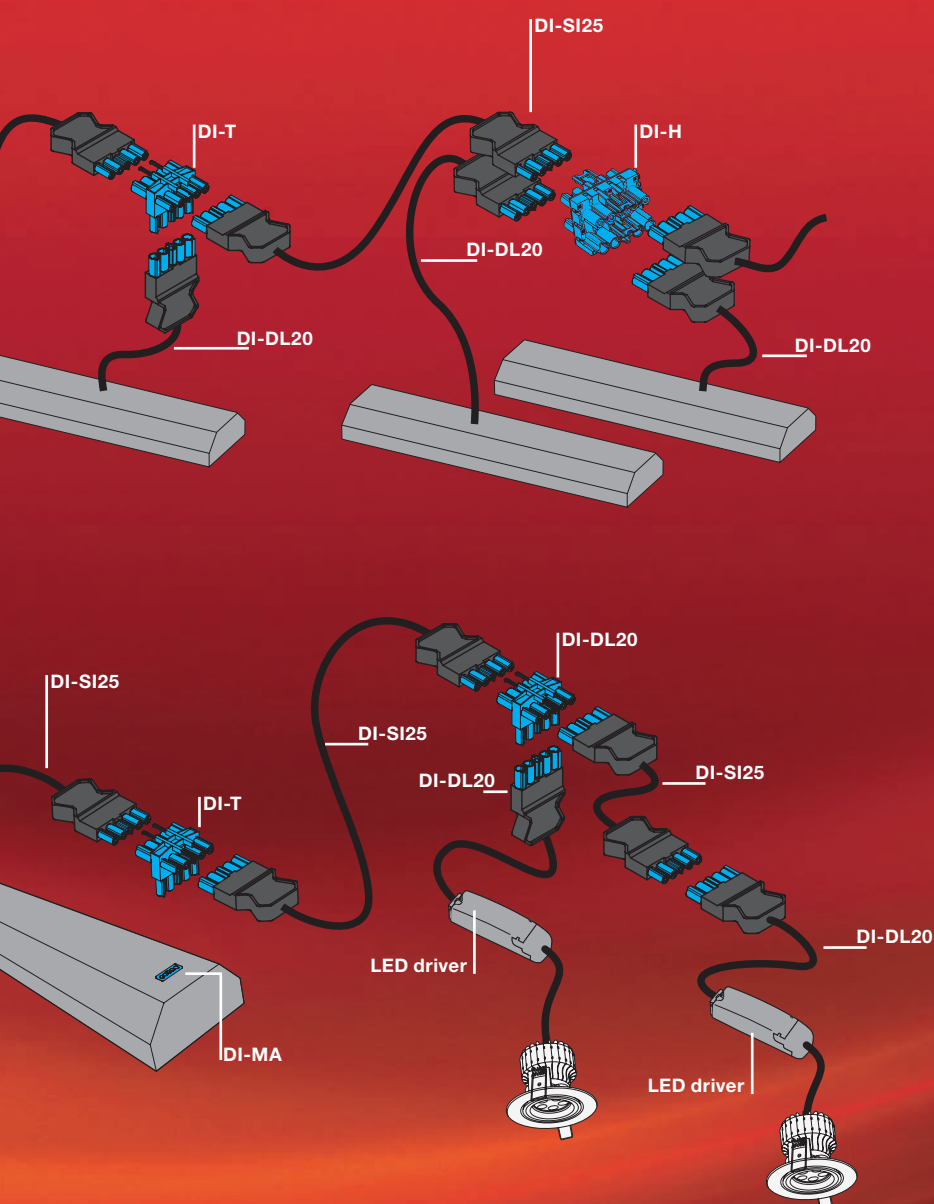
# Fast & flexible



## THE FLEXIBLE PLUG



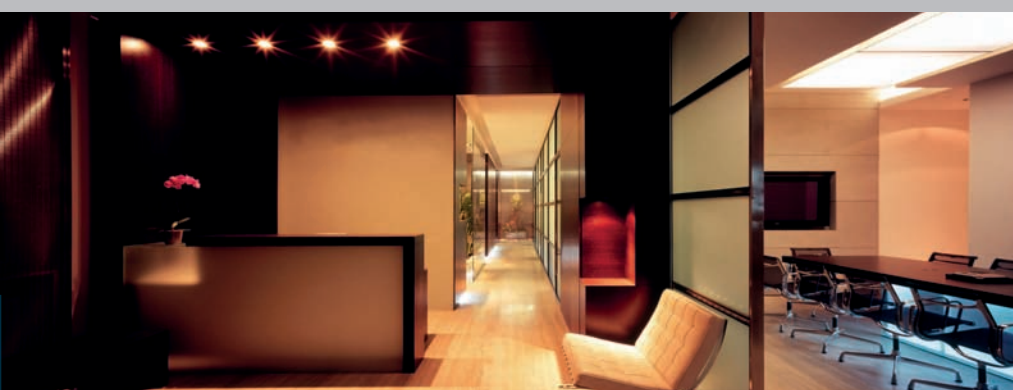
## Simplify installation



### Product features

- Power and DALI in a single five-pole solution allows for efficient connection and installation of light fittings, switches and sensors.
- Scalable and flexible; expand or reduce installation when required.
- Light fittings are available with pre-terminated cable.
- Mechanical stability prevents connection faults.
- The 'H' connector allows for multiple connections, reducing the number of components required in a circuit.
- No termination or segregation is required. This enables easy connection of luminaires, emergency fittings, exit signs, switches and sensors.
- Integrated DALI control cable reduces cabling and installation costs.
- Pre-wired connectors save installation time, eliminate wiring errors and significantly reduce labour costs.
- Keyed connectors ensure correct polarity.
- Components can be reused or added to an existing connection at anytime.
- Interconnecting leads come in 1, 2, 2.5, 3, 3.5, 4, 4.5, 5, 6 and 7 metre lengths.

AND PLAY SOLUTION





## Scalable and flexible

### The ultimate flexibility

Alterations or additions are easy to carry out due to the innovative five-pin installation couplers and cabling design, which saves time and money. The simple range of components can be configured to suit any type of installation requirements, providing you with the most flexible soft wiring solution available on the market.

DALlinfinity installations demonstrate that the use of soft wiring systems offer greater advantages to the electrical contractor, providing substantial installation time savings. The unrivalled scalability and flexibility of DALlinfinity, satisfies the varying demands of commercial lighting designs, where many last minute layout changes occur - offering measurable labour savings.

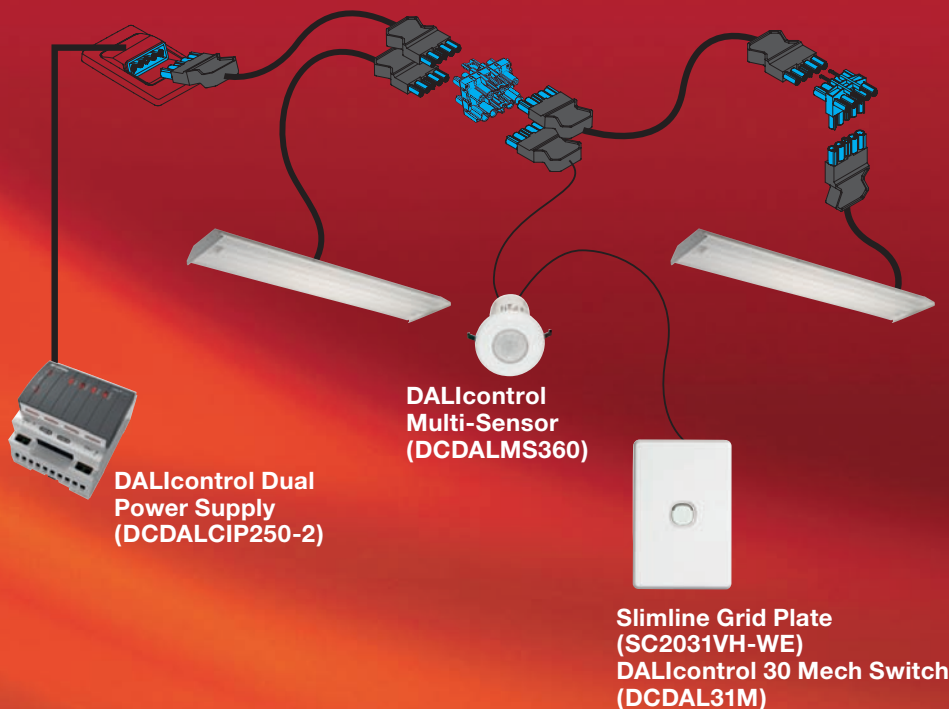
### Integrated emergency lighting

Every aspect of a lighting control system can be incorporated into a DALIcontrol solution, including emergency luminaires and exit signs.

The DALI protocol provides the capability to collect status information from ballasts, emergency and exit lighting. This eliminates the need for separate monitored systems.

DALlinfinity Soft Wiring 5 Pole used in conjunction with DALI lighting eliminates the need for separate supply to emergency and exit lighting. One cabling system can supply power to all lighting in an area.

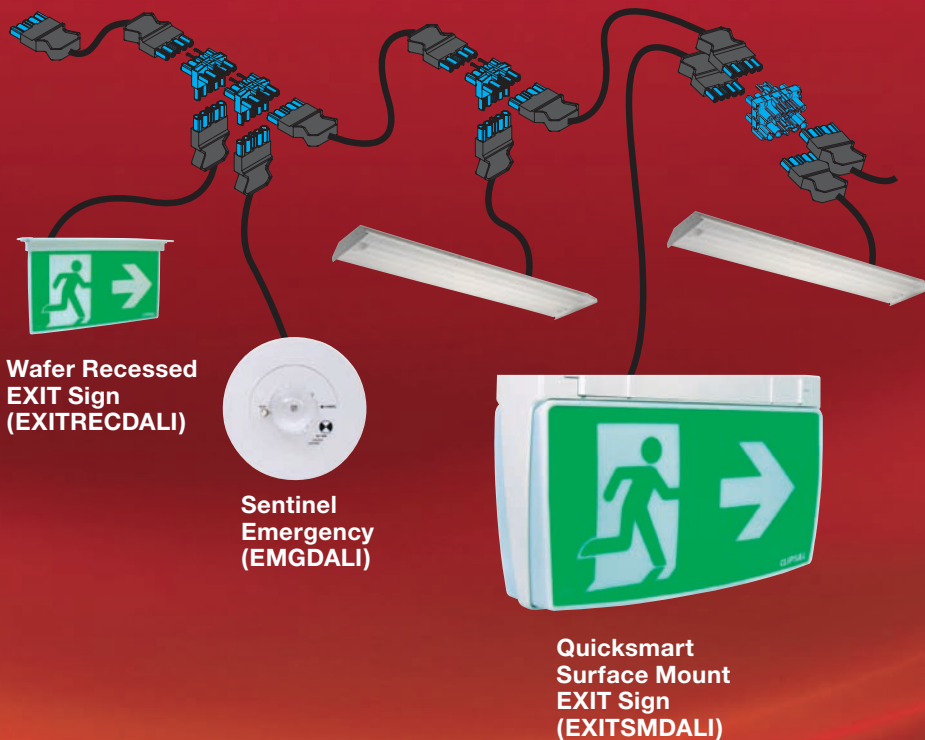
# Click & connect



THE FLEXIBLE PLUG



## Innovative reusable design



### No waste

Another major benefit of using the DALIinfinity Soft Wiring 5 Pole is that there is no waste and it is reusable. This provides both installers and end users with an efficient and complete lighting solution, wherever it may be required. The end result is an eco-friendly DALIcontrol lighting system.

### From stand-alone to integrated system

Scalable and flexible, you can achieve energy-efficient lighting control of a single room or a whole building using the same native DALI components. Simply connect DALIcontrol lighting, switches and sensors using the DALIinfinity Soft Wiring 5 Pole solution.

### Why use a DALIinfinity solution?

- Easily reconfigured for new tenants.
- Labour savings reduce project cost.
- Single socket or cable solution for installation.
- Easy connection, relocation or reconfiguration of components.
- Part of a universal wiring system.

AND PLAY SOLUTION



### Mix and match

#### DI-DL\*\* and DI-DF-20 Fly Leads

Catalogue No.	Description
<b>DI-DF-20</b>	2.0 metre DALI only fly lead with male DALlinfinity connector. Pre-stripped and prepared free end for installation of OEM products into DALI equipment. 2 pole 16A - 2 x 1.5mm <sup>2</sup> D1/D2 multi-strand cables.
<b>DI-DL10</b>	1.0 metre fly lead with male DALlinfinity connector. Pre-stripped and prepared free end for installation of OEM products into luminaires and DALI equipment. 5 pole 16A - 5 x 1.5mm <sup>2</sup> A,N,E and D1/D2 multi-strand cables.
<b>DI-DL20</b>	2.0 metre fly lead with male DALlinfinity connector. Pre-stripped and prepared free end for installation of OEM products into luminaires and DALI equipment. 5 pole 16A - 5 x 1.5mm <sup>2</sup> A,N,E and D1/D2 multi-strand cables.

(Locking device required for DI-DF & DI-DL fly leads when connecting to DI-T)

#### DI-SI\*\* Interconnect Leads

Catalogue No.	Description
<b>DI-SI10</b>	1.0 metre interconnect lead with DALlinfinity female and male connector. 5 pole 20A/16A - 3 x 2.5mm <sup>2</sup> A, N & E / 2 x 1.5mm <sup>2</sup> D1/D2, multi-strand cables.
<b>DI-SI20</b>	2.0 metre interconnect lead with DALlinfinity female and male connector. 5 pole 20A/16A - 3 x 2.5mm <sup>2</sup> A, N & E / 2 x 1.5mm <sup>2</sup> D1/D2, multi-strand cables.
<b>DI-SI25</b>	2.5 metre interconnect lead with DALlinfinity female and male connector. 5 pole 20A/16A - 3 x 2.5mm <sup>2</sup> A, N & E / 2 x 1.5mm <sup>2</sup> D1/D2, multi-strand cables.
<b>DI-SI30</b>	3.0 metre interconnect lead with DALlinfinity female and male connector. 5 pole 20A/16A - 3 x 2.5mm <sup>2</sup> A, N & E / 2 x 1.5mm <sup>2</sup> D1/D2, multi-strand cables.
<b>DI-SI35</b>	3.5 metre interconnect lead with DALlinfinity female and male connector. 5 pole 20A/16A - 3 x 2.5mm <sup>2</sup> A, N & E / 2 x 1.5mm <sup>2</sup> D1/D2, multi-strand cables.
<b>DI-SI40</b>	4.0 metre interconnect lead with DALlinfinity female and male connector. 5 pole 20A/16A - 3 x 2.5mm <sup>2</sup> A, N & E / 2 x 1.5mm <sup>2</sup> D1/D2, multi-strand cables.
<b>DI-SI45</b>	4.5 metre interconnect lead with DALlinfinity female and male connector. 5 pole 20A/16A - 3 x 2.5mm <sup>2</sup> A, N & E / 2 x 1.5mm <sup>2</sup> D1/D2, multi-strand cables.
<b>DI-SI50</b>	5.0 metre interconnect lead with DALlinfinity female and male connector. 5 pole 20A/16A - 3 x 2.5mm <sup>2</sup> A, N & E / 2 x 1.5mm <sup>2</sup> D1/D2, multi-strand cables.
<b>DI-SI60</b>	6.0 metre interconnect lead with DALlinfinity female and male connector. 5 pole 20A/16A - 3 x 2.5mm <sup>2</sup> A, N & E / 2 x 1.5mm <sup>2</sup> D1/D2, multi-strand cables.
<b>DI-SI70</b>	7.0 metre interconnect lead with DALlinfinity female and male connector. 5 pole 20A/16A - 3 x 2.5mm <sup>2</sup> A, N & E / 2 x 1.5mm <sup>2</sup> D1/D2, multi-strand cables.



**DI-DF-20**



**DI-DL\*\***



**DI-SI\*\***

## Selection guide

### Connectors and Accessories

Catalogue No.	Description
<b>DI-T</b>	'T' connector - 1 in 2 out (3-way). For connection of DALI luminaires and equipment. 5 pole 20A. (Locking device required for DI-DF and DI-DL fly leads when connecting to DI-T).
<b>DI-H</b>	'H' connector - 1 in 3 out (4-way). For connection of DALI luminaires and equipment. 5 pole 20A.
<b>DI-RW-FE</b>	Rewireable female connector. For special or custom lead configurations and suitable for use as a starter socket. 5 pole 20A.
<b>DI-RW-MA</b>	Rewireable male connector. For special or custom lead configurations. 5 pole 20A.
<b>DI-FE</b>	Snap-in female connector. For flush fitting into luminaires and suitable for use as a starter socket. 5 pole 20A.
<b>DI-MA</b>	Snap-in male connector. For flush fitting into luminaires. 5 pole 20A.
<b>DI-LD</b>	Locking device. For locking of cables to DI-T connector and joining of DI-SI cables.
<b>DI-SS</b>	Starter socket.



DI-T



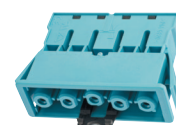
DI-H



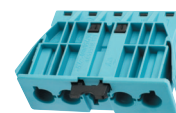
DI-RW-FE



DI-RW-MA



DI-FE



DI-MA



DI-LD



DI-SS

## Technical information

Leads - DI-SI/DI-DL/DI-DF	Connectors and Accessories
<b>General</b>	
Rated current: 16A and 20A	Rated current: 20A
Rated voltage: 400V	Rated voltage: 250V
Rated impulse voltage: 4kV	Rated impulse voltage: 4kV
Pollution degree: 2	Pollution degree: 2
Mechanical coding: yes	Mechanical coding: yes
Interlockable: yes	Interlockable: yes
Colour of coding/contact carrier: Pastel Blue	Colour of coding/contact carrier: Pastel Blue
Colour of housing (including strain relief): Black	
<b>Model</b>	
Number of poles: 2 and 5	Number of poles: 5
Nominal cross section conductor: 2.5mm <sup>2</sup> and 1.5mm <sup>2</sup>	Type of fastening: no
Degree of protection (IP): IP40	Degree of protection (IP): IP40
Lead type: H05VV-F	
Lead colour: Black	
Lead diameter: 8.3mm (DI-DF), 10.1mm (DI-DL), 12.3mm (DI-SI)	
Version of Lead: female - male (DI-SI), male - free (DI-DF & DI-DL)	
<b>Material</b>	
Surface finish: tin-plated	Housing material: polyamide
Halogen free: no	Halogen free: yes
Continuous temperature of lead: 70°C	Contact material: CuZn
Insulation components continuous temperature: 100°C	Insulation components continuous temperature: 100°C
	Surface finish: silver-plated

## CERTIFICATIONS

IEC EN 61535.1 2009 (AS/NZS 61535.1)

DIN VDE 0606-2000 (VDE0606 Tiel 200):2005-05

E DIN VDE 0606-200/A1 (VDE0606 Tiel 200):2004-12

DIN 57628/VDE 0628:1984-11

IEC 60320-1/EN 60320-1/VDE 0625 Part 1

IEC 60320-2-2/EN 60320-2-2/VDE 0625 Part 2

CE, VDE, REACH, RoHS

### Schneider Electric (Australia) Pty Ltd

33-37 Port Wakefield Road, Gepps Cross  
South Australia 5094

PO Box 132, Enfield Plaza,  
South Australia 5085

**National Customer Care Enquiries:**  
**1300 2025 25**

**clipsal.com**

Website: clipsal.com  
Contact us: clipsal.com/feedback

You can find this brochure and many others  
online in PDF format at: **clipsal.com**

Follow the links off the home page or access  
the following page directly:  
**clipsal.com/brochures**

Schneider Electric (Australia) Pty Ltd reserves the right to change specifications, modify designs and discontinue items without incurring obligation and whilst every effort is made to ensure that descriptions, specifications and other information in this catalogue are correct, no warranty is given in respect thereof and the company shall not be liable for any error therein.

© 2013 Schneider Electric. All Rights Reserved.

Trademarks are owned by Schneider Electric Industries SAS or its affiliated companies.

This document has been printed using FSC Mix Certified paper. ISO 14001 environmental management system in use at mill.