

Wiser Motion Sensor

Device user guide

Information about features and functionality of the device.

02/2024

IMPORTANT: Select your system to access the right user guide

If you have
Wiser Gateway
(CCT501901) and
Wiser app, continue
reading this
device user guide.


Wiser by SE System



Wiser app



CCT501901
Wiser Gateway

If you have
Wiser Hub/HubR
2nd Generation
(CCT501801 or
CCTFR6311G2) and
Wiser Home app, then
click here 

Wiser Home System



Wiser Home app



CCT501801
Wiser Hub
2nd Generation



CCTFR6311G2
Wiser HubR
2nd Generation

Legal Information

The information provided in this document contains general descriptions, technical characteristics and/or recommendations related to products/solutions.

This document is not intended as a substitute for a detailed study or operational and site-specific development or schematic plan. It is not to be used for determining suitability or reliability of the products/solutions for specific user applications. It is the duty of any such user to perform or have any professional expert of its choice (integrator, specifier or the like) perform the appropriate and comprehensive risk analysis, evaluation and testing of the products/solutions with respect to the relevant specific application or use thereof.

The Schneider Electric brand and any trademarks of Schneider Electric SE and its subsidiaries referred to in this document are the property of Schneider Electric SE or its subsidiaries. All other brands may be trademarks of their respective owner.

This document and its content are protected under applicable copyright laws and provided for informative use only. No part of this document may be reproduced or transmitted in any form or by any means (electronic, mechanical, photocopying, recording, or otherwise), for any purpose, without the prior written permission of Schneider Electric.

Schneider Electric does not grant any right or license for commercial use of the document or its content, except for a non-exclusive and personal license to consult it on an "as is" basis.

Schneider Electric reserves the right to make changes or updates with respect to or in the content of this document or the format thereof, at any time without notice.

To the extent permitted by applicable law, no responsibility or liability is assumed by Schneider Electric and its subsidiaries for any errors or omissions in the informational content of this document, as well as any non-intended use or misuse of the content thereof.

Table of Contents

Safety information	4
Wiser Motion Sensor	5
For your safety	5
About the device	5
Installing the device	5
Pairing the device	6
Pairing device manually	6
Pairing Device with Auto scan	8
Configuring the device	9
Changing the device icon	9
Renaming the device	9
Changing the device location	10
Removing the device	11
Resetting the device	11
Using the Device	12
Sensor Setting	12
Lux Setting	14
Checking the device history	15
Creating an automation	16
Replacing the batteries	21
LED Indications	21
Troubleshooting	23
Technical Data	24

Safety information

Important information

Read these instructions carefully and look at the equipment to become familiar with the device before trying to install, operate, service, or maintain it. The following special messages may appear throughout this manual or on the equipment to warn of potential hazards or to call attention to information that clarifies or simplifies a procedure.



The addition of either symbol to a “Danger” or “Warning” safety label indicates that an electrical hazard exists which will result in personal injury if the instructions are not followed.



This is the safety alert symbol. It is used to alert you to potential personal injury hazards. Obey all safety messages that accompany this symbol to avoid possible injury or death.

DANGER

DANGER indicates a hazardous situation which, if not avoided, **will result in** death or serious injury.

Failure to follow these instructions will result in death or serious injury.

WARNING

WARNING indicates a hazardous situation which, if not avoided, **could result in** death or serious injury.

CAUTION

CAUTION indicates a hazardous situation which, if not avoided, **could result in** minor or moderate injury.

NOTICE

NOTICE is used to address practices not related to physical injury.

Wiser Motion Sensor



CCT595011

For your safety

NOTICE

RISK OF DAMAGE TO DEVICE

- Always operate the product in compliance with the specified technical data.
- Do not install the sensor in a place with strong sunlight or wind (for example, close to ventilation).
- Temperatures greater than 32 °C degrade the sensor's ability to measure sensitivity, detection range, and angle.

Failure to follow these instructions can result in equipment damage.

About the device

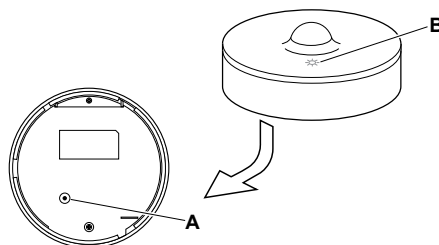
The Wiser Motion Sensor (hereinafter referred to as **sensor**) detects nearby movement and measures the luminance of the environment.

The sensor sends the data to the **Wiser Gateway**. The threshold of luminance settings and/or detection of movement can be configured in the Wiser app.

Features of the sensor:

- Detect motion and send this information to the **Wiser Gateway**.
- Detect and measure the lux level of the environment and passes the information to the **Wiser Gateway**.
- Sends the sensor battery level and offline status information to the **Wiser Gateway**.

Operating elements



Installing the device


Refer to the installation instruction supplied with this product.
See Wiser Motion Sensor.

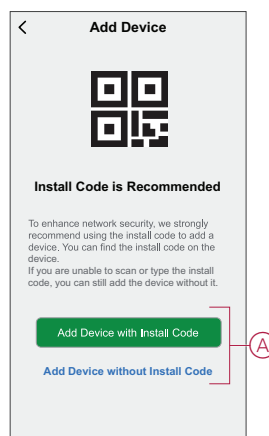
Pairing the device

Using the Wiser app, first pair your device with the **Gateway/Hub** to access and control the device. You can either add the device manually or do an auto-scan to pair it.

Pairing device manually

To pair the device manually:

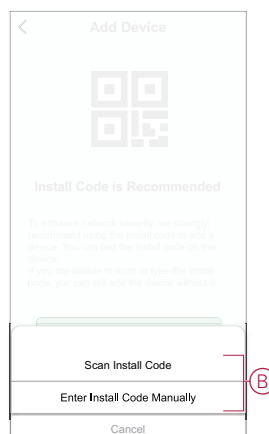
1. On **Home** page, tap **+**.
2. Tap , select the required **Wiser Hub** on the slide-up menu.
3. Select an option to add the device (A):
 - **Add Device with Install Code**
 - **Add Device without Install Code**



TIP: It is highly recommended to add the device with install code.

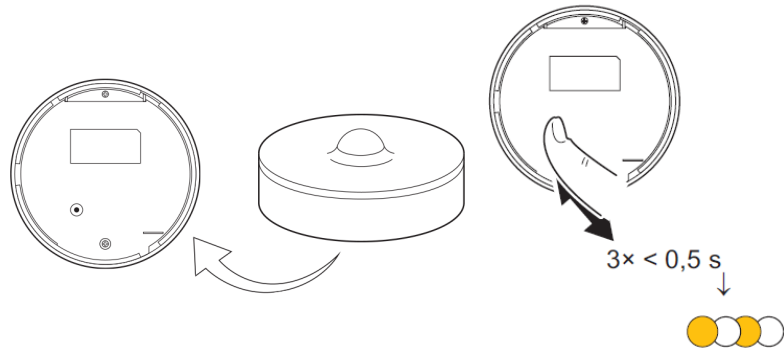
4. To pair the device with an install code, tap **Add Device with Install Code** to display the slide-up menu. Select any one of the options (B):
 - **Scan Install Code** - you can scan the device for the install code.
 - **Enter Install Code Manually** - you can manually enter the install code from the device.

After pairing the device with install code, proceed to **Step 6**.



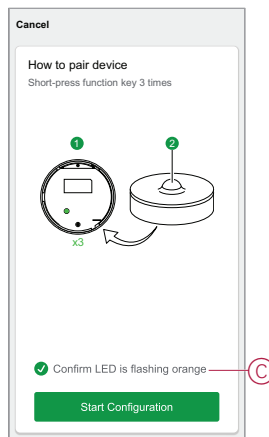
5. To pair the device without install code, tap **Add Device without Install Code**.

6. On the rear side of the sensor, short press (< 0,5 s) the function key 3 times.



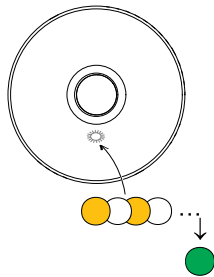
The LED blinks orange.

7. In the app, select **Confirm LED is flashing orange** and tap **Start configuration (C)**.



The app displays the progress of connecting the device.

8. After a few seconds, a solid green LED indicates that the sensor is successfully paired to the .



9. Tap **Done** when the pairing is successful.

Pairing Device with Auto scan

Pairing the device with auto scan automatically discovers the device when the corresponding device is powered on.

To pair the device:

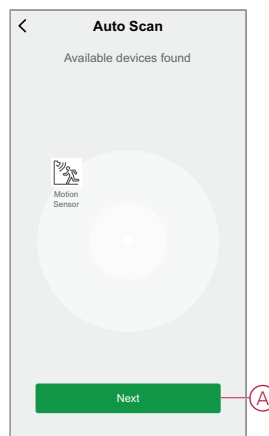
1. On the **Home** page, tap **+**.
2. Tap **Auto scan** and then tap **Confirm**.
3. If you have multiple hubs, do Step 4 or proceed to Step 5.
4. Tap **Select hub** and select the Wiser hub from the slide-up menu.
5. Short press the function key 3 times (< 0,5 s).

NOTE:

- The LED blinks orange.
- Wait for a few seconds until the device search is complete.

TIP: If you want to pair multiple devices, perform step 5 on each device and wait for a few seconds.

6. Select **Motion Sensor** and tap **Next (A)**.





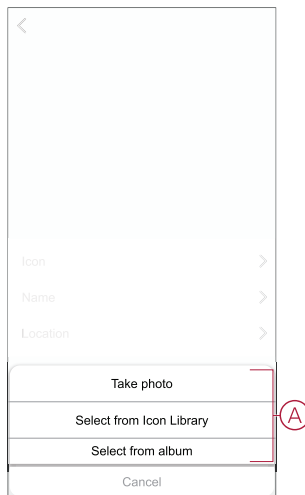
7. Tap **Done** when the pairing is successful.

Configuring the device

Changing the device icon



You can change the device icon using the Wiser app.

1. On the Home page, select and tap the device you wish to change the icon.
2. At the top right corner of the device screen, tap .
3. Tap edit  next to the device name.
4. Tap **Icon** to view the menu.
5. In the slide-up menu, select any one of the following (A) to change the device icon:
 - **Take photo** - allows you to click a photo from the mobile camera.
 - **Select from Icon Library** - allows you to select an icon from the app library.
 - **Select from Album** - allows you to select a photo from the mobile gallery.

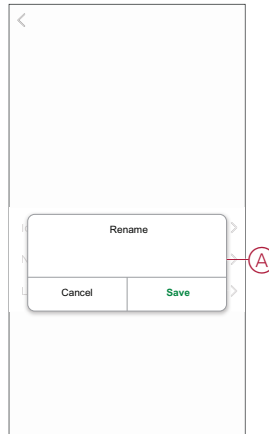


Renaming the device

You can rename the device using the Wiser app.



1. On the Home page, select and tap the device you wish to rename.
2. At the top right corner of the device screen, tap .
3. Tap edit  next to the device name.

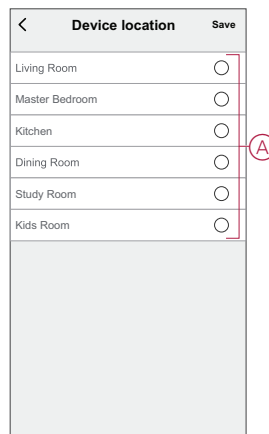
4. Tap **Name**, enter the new name (A) and then tap **Save**.



Changing the device location


You can change the device location using the Wiser app.

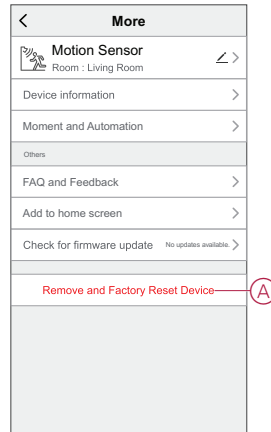
1. On the Home page, select and tap the device you wish to change the location.
2. At the top right corner of the device screen, tap .
3. Tap edit  next to the device name.
4. Tap **Location**.
5. Select the desired location from the list (A) and then tap **Save**.



Removing the device

You can remove a device from the device list using the Wiser app. To remove the device:

1. On the **Home** page, tap **All devices > Motion Sensor**.
2. Tap  to display more details.
3. Tap **Remove and Factory Reset Device (A)** and tap **Confirm**.



TIP: On the home page, you can tap and hold the **Motion Sensor** to remove the device.

NOTE: By removing the device, you will reset the device. If you still have a problem with the reset, then refer to [resetting the device](#), page 11.

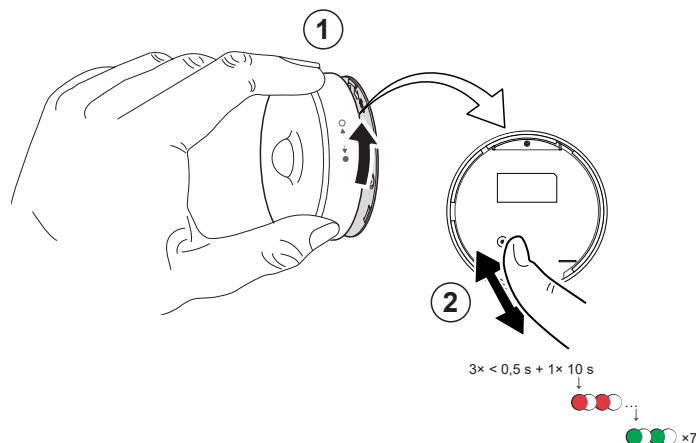
Resetting the device

You can reset the sensor to factory default manually. To reset the sensor:

1. Rotate the sensor counterclockwise to unlock it from the base plate.
2. Short-press the function key three times (<0.5 s) and then long-press the function key once (>10 s); the LED blinks red after 10 s, then release the function key.

Upon successful reset of the sensor, the LED stops blinking. The sensor restarts and blinks green for a few seconds.

NOTE: After reset, the LED turns off to save the battery.

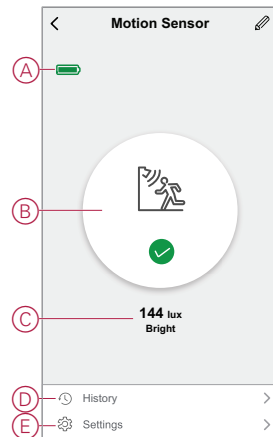


Using the Device

On the **Home** page, tap **All devices** > **Motion Sensor** to access the control panel.

On the Sensor control panel page, you can see the following:

- Battery level (A)
- Motion detection status (B)
- Current lux level (C)
- History (D)
- Settings (E)



Sensor Setting

Using Wiser app, you can do the setting such as Sensitivity and Detection delay.

Sensitivity

Using the Wiser app, you can set the sensitivity of the sensor (such as High, Medium, Low).

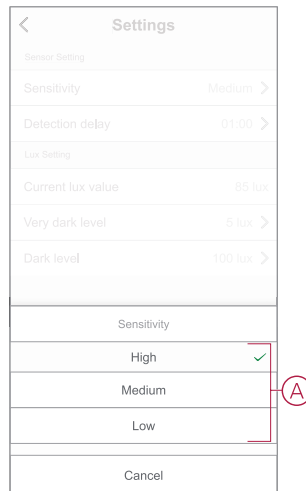
To set the sensitivity:

1. On the Home page, tap **All devices** > **Motion Sensor**.
2. On the device control panel page, tap **Settings**.
3. Short press the function key 3 times or simulate the motion to wake up the device.

4. Tap **Sensitivity** and select one of the following levels (A):

- **High**
- **Medium**
- **Low**

NOTE: The high sensitivity level detects the slightest movement.



Detection delay

Using the wiser app, you can set the detection delay time.
To set the detection delay duration:

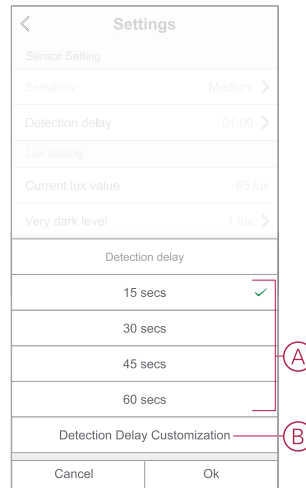
1. On the **Home** page, tap **All devices > Motion Sensor**.
2. On the device control panel page, tap **Settings**.
3. Short press the function key once or simulate the motion to wake up the device.
4. Tap **Detection Delay** and select the time duration (A).

5. Tap **Detection Delay Customization** (B) to customize your detection delay time. You can set the time between 00:01 to 59:59 minutes.

NOTE:

- Modifying the detection delay time to long-interval will affect the battery life of the sensor.
- Each detected motion resets the delay time. Thus the delay time begins with the last motion detected.

EXAMPLE: If you set the detection delay time to 5 minutes and there is a motion, the information "Occupied" will be sent to the Wiser gateway. If there is no motion detected in last 5 minutes (configured detection delay time), the information "Unoccupied" will be sent to the Gateway.



Lux Setting

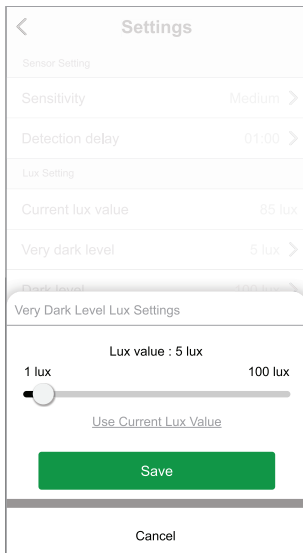
Using the Wiser app, you can define the threshold value for lux ranges (such as very dark, dark, bright, very bright) of the environment. This will prevent the false alarm caused by changes in the light intensity.

To set the lux range value:

1. On the **Home** page, tap **All devices > Motion Sensor**.
2. On the device control panel page, tap **Settings**.

3. Tap any of the following Lux ranges and drag the slider bar to define its threshold value and tap **Save**:
 - **Very dark level** - Lux value ranges from 1 lux to 100 lux
 - **Dark level** - Lux level ranges from 6 lux to 300 lux
 - **Bright level** - Lux level ranges from 101 lux to 2000 lux

NOTE: The **Current Lux Value** is the current light level present in the environment, which the sensor can measure.

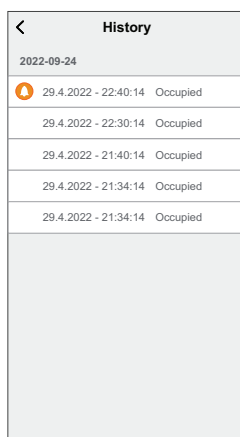


Checking the device history

You can monitor the motion detection status by accessing the device history in the Wiser app.

To see the device history:


1. On the **Home** page, tap **All devices** > **Motion Sensor**.
2. On the device control panel page, tap **History**.
3. In the **History** page, you can see the time when the motion was detected.




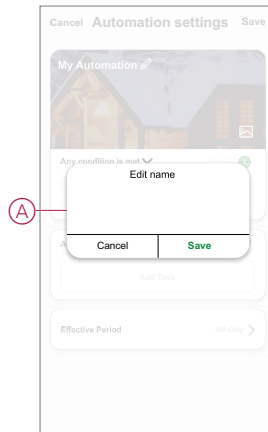
Creating an automation

An automation allows you to group multiple actions that are usually done together, triggered automatically or at scheduled times. By using the Wiser app, you can create automations based on your needs.

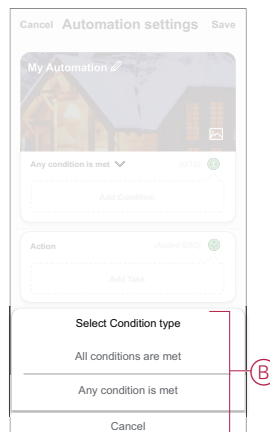
To create an automation:

1. On the **Home** page, tap the .
2. Go to **Automation** > **+** to create an automation.
3. Tap **Edit name**, enter the name of the automation (A) and tap **Save**.

TIP: You can choose the cover image that represents your automation by tapping .




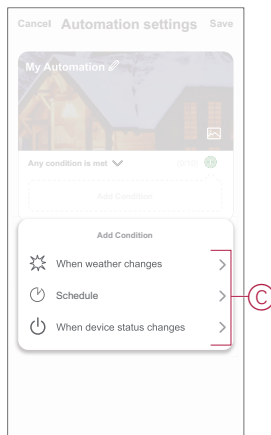
4. Tap **Any condition is met** to select any one of the condition type (B):
 - **All conditions are met**- The automation is triggered when all the conditions are met.
 - **Any condition is met**- The automation is triggered when at least one condition is met.



5. Tap **Add Condition** to display the slide-up menu.

6. In the **Add Condition** menu, you can do either or all of the following options (C):
 - **When weather changes** - Select various weather settings
 - **Schedule** - Set the time and day
 - **When device status changes** - Select the device and its function

NOTE: You can add one or more conditions using .

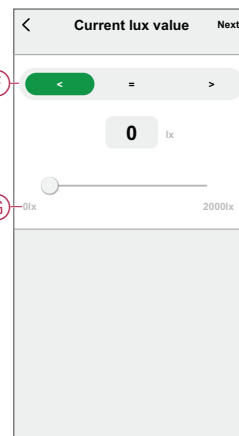
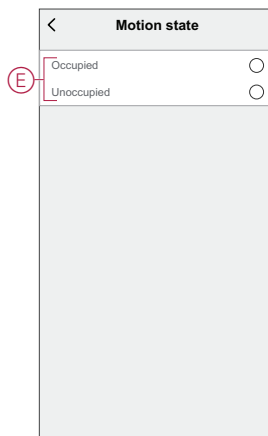
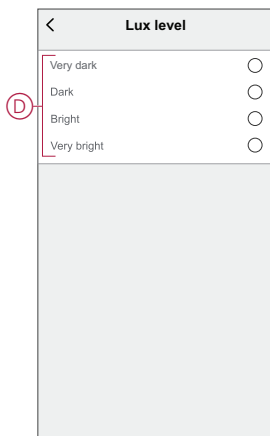


7. Tap **When device status changes > Motion Sensor** to select either or all of the functions to add in the automation:

- **Lux level** - Select any level from Very dark to Very bright (D)


NOTE: The value for Very dark to Bright can be set in the **Lux Setting**, page 14. The Very bright setting will take the maximum lux setting value (2000 lux).

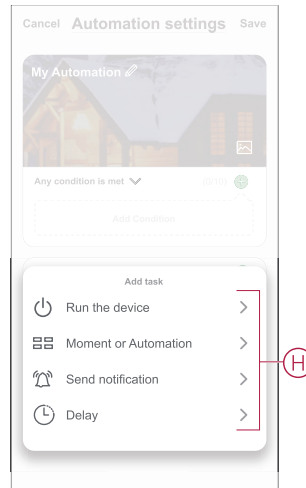
- **Motion state** - Occupied, if a motion is detected. Unoccupied, if there is no motion (E)
- **Current lux value** - Select the condition (F) and the lux value (G)



8. Tap **Add task** to display the slide-up menu.

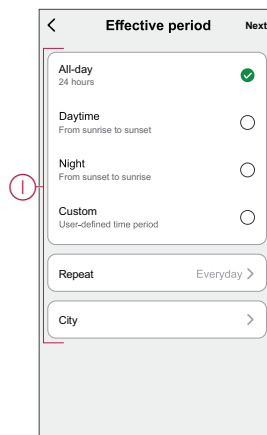
9. In the **Add task** menu, you can do either or all of the following options (H):
- **Run the device**- Select the devices that you want to trigger.
 - **Moment or Automation**- Select the moment which you want to trigger or select the automation that you want to enable or disable.
 - **Send notification**- Turn on notification for the automation.
 - **Delay** - Set the delay time.

NOTE: You can add one or more actions using  icon.



10. Tap on **Effective period** to set the time range for the automation. You can select any one of the following (I):

- **All-day - 24 hours**
- **Daytime - From sunrise to sunset**
- **Night - From sunset to sunrise**
- **Custom - User defined time period**




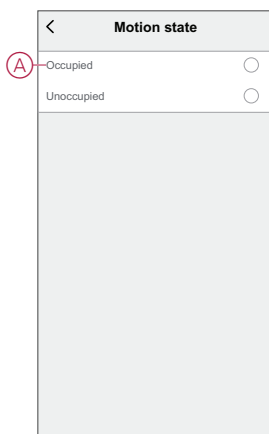
11. Once all the actions and conditions are set, tap **Save**.

Example of an automation

This demonstration shows you how to create an automation to switch on the light with 50% brightness level when a motion is detected.

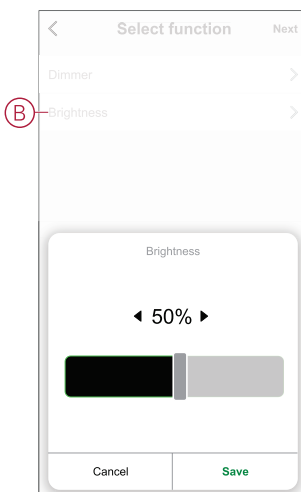
NOTE: The Dimmer will not be switched Off automatically when the Sensor sends the "Unoccupied" message. To switch off the dimmer when there is no more motion, you must create a new automation.

1. Go to **Automation** > **+** to create an automation.
2. Tap **Edit name**, enter the name of the automation and tap **Save**.
TIP: You can choose the cover image that represents your automation by tapping .
3. Tap **Add Condition** > **When device status changes** > **Motion Sensor**.
4. Tap **Motion State** > **Occupied (A)**.



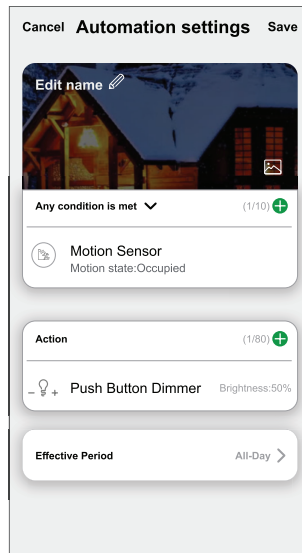
5. Tap **Add task** > **Run the device** > **Push-button Dimmer**.
6. Tap **Brightness (B)**, adjust the brightness to 50% and tap **Save**.

TIP: Setting the brightness level turns on the light the light when the automation is triggered. You need not add a task to turn on the Dimmer separately.



7. Tap **Next**.

8. In the **Automation Settings** page, tap **Save**.



Once the automation is saved, it is visible on the **Automation** tab. You can tap the toggle switch on the automation to enable it.

Editing an automation

To edit an automation:

1. On the **Automation** tab, locate the automation you want to edit and tap **⋮**.
2. On the **Edit** page, you can tap each item (such as dimmer, shutter, delay, temperature, etc.) to change the settings.

TIP:

- You can add one or more actions using **+**.
- To delete an existing condition or action, slide each item towards left and tap **Delete**.

Deleting an automation

To delete an automation:

1. On the **Automation** tab, locate the automation that you want to delete and then tap **⋮**.
2. Tap **Delete** and tap **Ok**.

NOTE: After deleting an automation, the device action can no longer be triggered.

Replacing the batteries

To replace the batteries:

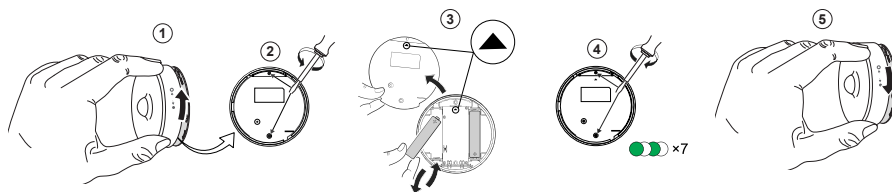
1. Rotate the sensor counterclockwise to unlock it from the base plate.
2. Remove the screws from the battery cover to access the batteries.
3. Replace the batteries with proper polarity and then re-install the battery cover.

The LED blinks green seven times and then stops blinking.

NOTE: Make sure that the triangle mark on the battery cover and sensor are aligned.

4. Tighten the screw that holds the sensor and its battery cover.
5. Position the sensor on the base plate and then rotate it clockwise until it locks onto the base plate.

IMPORTANT: Dispose used batteries, as per statutory regulations.



LED Indications

Initial Stage

Action	LED Indication	Status
Green LED blinks 7 times (1 Hz)	→ (7x) →	After the sensor is powered On for the first time or after the batteries were replaced.

If not paired yet

Action	LED Indication	Status
Orange LED blinks (1 Hz)	→ (2 min) → → (3 sec) →	Indicates the pairing mode after function key is pressed 3 times within 1 second. If pairing is not successful, the orange LED is On for 3 seconds and then turns Off.
Green LED is On for 3 seconds	→ (3 sec) →	Pairing was successful.


If already paired

Action	LED Indication	Status
Green LED blinks 5 times (1 Hz)	→ (5x) →	The sensor is paired and connected.
An orange LED blinks for three seconds (4 Hz)	→ (3 sec) →	The sensor is paired, but disconnected.

Reset - After pressing the function key 3 times within 0.5 seconds and then hold for 10 seconds

Action	LED Indication
The red LED blinks for 10 seconds, remains on for 3 seconds, and then turns off. The sensor then restarts and blinks green for a few seconds.	→ (10 sec) → → (3 sec) → →

Battery level

LED Indication	Status
LED blinks orange once per minute. 	The battery is low (< 10%), replace the battery, page 21. NOTE: A notification pop-up will appear on the app.

Troubleshooting

Symptom	Possible cause	Solution
The sensor triggers the automation/schedule, but does not show the status on the app.	The sensor may be undergoing an over-the-air (OTA) firmware update.	Wait for the firmware update to complete and then check that the sensor is reporting status. NOTE: The firmware update runs in the background.
LED blinks orange.	The sensor battery is low or drained.	Replace the battery in the device, page 21 NOTE: A notification pop-up will appear on the app.

Technical Data

Battery	3 VDC, LR03 AAA x2
Battery life	Up to 5 years (may vary based on the usage, frequency of firmware update and environment)
Nominal power	≤90 mW
IP rating	IP20
Operating frequency	2405 – 2480 MHz
Max. radio-frequency power transmitted	≤7 dBm
Operating temperature	-10 °C to 50 °C
Relative humidity	10 % to 95 %
Lux measurement range	0 lx to 2000 lx
Lux resolution	1 lx
Dimensions	Ø 75.0 x 26.6 mm
Communication protocol	Zigbee 3.0 certified
Ceiling mounted at 2.5 m	
Detection angle	360°
Detection range	Ø 4 m
Wall mounted at 1.2 m	
Detection angle	90° to 110° horizontal and vertical
Detection range	5 m in radius

Compliance

Compliance information for Green Premium products

Find and download comprehensive information about Green Premium products, including RoHS compliance and REACH declarations as well as Product Environmental Profile (PEP) and End-of-Life instructions (EOLI).

General information about Green Premium products

Click the link below to read about Schneider Electric's Green Premium product strategy.

<https://www.schneider-electric.com/en/work/support/green-premium/>

Find compliance information for a Green Premium product

Click the link below to search for a product's compliance information (RoHS, REACH, PEP and EOLI).

NOTE: You will need the product reference number or product range to perform the search.

<https://www.reach.schneider-electric.com/CheckProduct.aspx?cskey=ot7n66yt63o1xblflyfj>

Trademarks

This guide makes reference to system and brand names that are trademarks of their relevant owners.

- Zigbee® is a registered trademark of the Connectivity Standards Alliance.
- Apple® and App Store® are brand names or registered trademarks of Apple Inc.
- Google Play™ Store and Android™ are brand names or registered trademarks of Google Inc.
- Wi-Fi® is a registered trademark of Wi-Fi Alliance®.
- Wiser™ is a trademark and the property of Schneider Electric, its subsidiaries and affiliated companies.

Other brands and registered trademarks are the property of their respective owners.

Schneider Electric
35 rue Joseph Monier
92500 Rueil Malmaison
France

+ 33 (0) 1 41 29 70 00

www.se.com

As standards, specifications, and design change from time to time,
please ask for confirmation of the information given in this publication.

© 2021 – 2024 Schneider Electric. All rights reserved.

DUG_Motion Sensor_WSE-02