

Add metering in existing switchboards for energy efficiency compliance

PowerTag NSX - Wireless energy sensor on main incomer

- U, I, V, P, Q, S values,
- active energy, partial and total, delivered and received values, class 1 accuracy,
- reactive energy, partial delivered and received values,
- wireless communication,
- voltage loss alarm,
- power factor,
- simple communication driver in Com'X 510.

PowerTag Acti9 - Wireless energy sensors on head of groups

- U, I, V, P values,
- active energy, partial and total values, class 1 accuracy,
- wireless communication,
- simple communication driver in Com'X 510.

PowerTag Link - Wireless concentrator

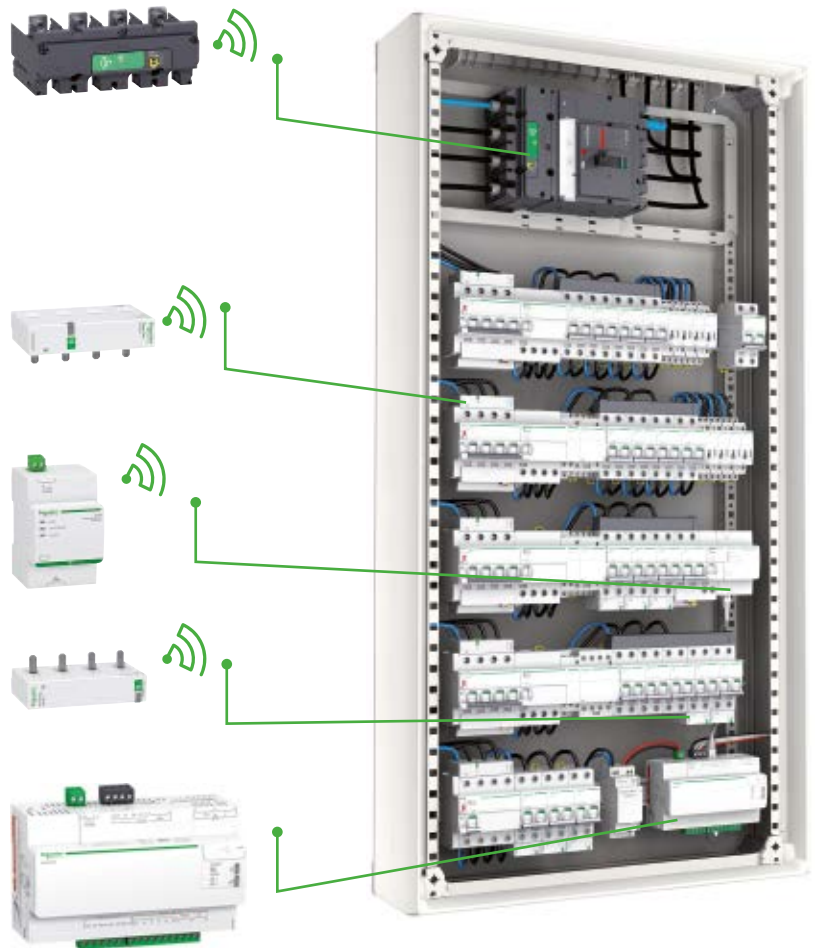
- concentrates up to 100 PowerTag sensors,
- Ethernet connection (Modbus TCP/IP),
- 230 V AC power supply, 54 mm wide.

PowerTag Acti9 - Wireless energy sensors on outgoers

- U, I, V, P values,
- active energy, partial and total values, class 1 accuracy,
- wireless communication,
- voltage loss alarm,
- simple communication driver in Com'X 510.

Com'X 510 - Building energy server

- plug & play configuration,
- energy dashboards for energy efficiency,
- monitoring and alarming,
- high connectivity (cloud, software, App, SMS, mail, time).



Your need

A metering solution with the smallest footprint, a low investment to match energy regulations and monitor main circuits.

Our solution

PowerTag NSX wireless energy sensor for main incomer monitoring.
 PowerTag Acti9 wireless energy sensors for <63 A, head of group and outgoers monitoring.
 Com'X 510 energy server with data-logging, embedded web pages and energy dashboards.

Benefits

- the right level of monitoring at the right place,
- class 1 energy measurement,
- wireless solution easy to install,
- smallest footprint, fitting in existing panels,
- standalone system with no additional software required,
- open system compatible with your BMS/EMS.

Preferred application

- office buildings,
- hotels,
- administration,
- education,
- healthcare.

Implement your simple solution in a few steps



Installation

Main incomer meter:

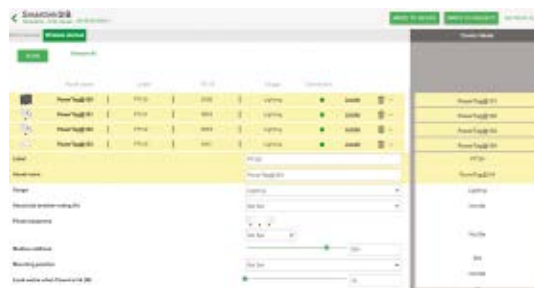
- flexible Rogowski current transformers are easy to install anywhere,
- wireless communication with Com'X 510 simplifies the wiring,

Head of groups and outgoing meters:

- PowerTag Acti9 sensors can be installed with no space lost on the DIN rail,
- wireless communication with PowerTag Link simplifies the wiring.

More about PowerTag

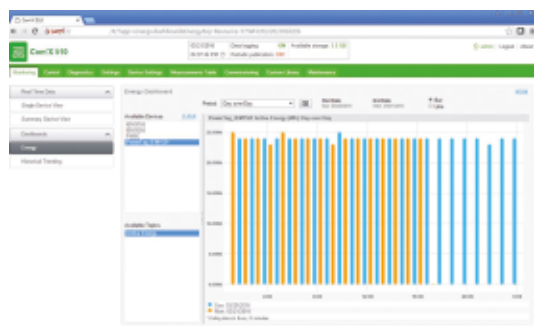
<http://www.schneider-electric.com/en/work/products/product-launch/powertag/>



Commissioning with EcoStruxure Power Commission (*)

EcoStruxure Power Commission is a free software to configure, test and commission your breakers, meters, PowerTag Link and PowerTag in a single interface. You can:

- add all communicating devices in a project,
- scan all PowerTag and associate to a PowerTag Link,
- configure electrical and communication settings,
- execute communication test and generate report,
- generate project report with all the settings.



Operation

- access to simple energy dashboards via a web server,
- instantaneous values and historical data available on web pages,
- possible data export to third party systems (FTP, email...),
- class 1 accuracy to identify precisely where to save energy.

(*): new name of Ecoreach software

Products used

Product	Description	Cat. no.
Com'X 510	Energy server with data logging and dashboards	EBX510
PowerTag Link	Ethernet concentrator up to 20 or 100 wireless devices	A9XMWD20 / A9XMWD100
PowerTag Acti9 M63	Energy sensor 63 A - 3P/4P	A9MEM154●
PowerTag Acti9 M63	Energy sensor 63 A - 1P/2P	A9MEM152●
PowerTag NSX	Energy sensor 250 A - 3P/3P+N	LV434020/21
PowerTag NSX	Energy sensor 630 A - 3P/3P+N	LV434022/23