

Multi 9

C60H – DC Miniature circuit-breakers



The C60H-DC supplementary protectors are used in direct current circuits (Industrial control and automations, transport, renewable energy...). They combine the following functions of circuit protection against short-circuit and overload currents, control and isolation.

Operation

- > 1 or 2 pole circuit-breakers
- > C curve - Overcurrent protection for any type of application

Advantages

- > Compatible with C60 auxiliaries and accessories
- > Positive break indication - the green strip indicates that all the poles are open and allows work to be carried out on the downstream circuit in complete safety.
- > Suitable for isolation as defined in IEC / EN 60947-2
- > Increase in the service life of the product: thanks to fast closure independent of the speed of action on the handle
- > Current limitation in the event of a fault: fast opening of the contacts prevents the loads from being destroyed in the event of a short-circuit.



C60H - DC

The range



OF

SD

SD+OF

MX+OF

MNX



1P



2P



Insulated connector

Comb busbars

Tooth caps

Sealable screw shield

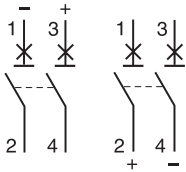
Sealable terminal shield

Padlocking device

Rotary handle (Front or side mount)

Choice table

C60H - DC	Rating (A)	C Curve
1P	1	MGN61501
	2	MGN61502
	3	MGN61503
	4	MGN61504
	5	MGN61505
	6	MGN61506
	10	MGN61508
	13	MGN61509
	15	MGN61510
	16	MGN61511
	20	MGN61512
	25	MGN61513
	30	MGN61514
	32	MGN61515
40	MGN61517	
50	MGN61518*	
63	MGN61519*	
2P	1	MGN61521
	2	MGN61522
	3	MGN61523
	4	MGN61524
	5	MGN61525
	6	MGN61526
	10	MGN61528
	13	MGN61529
	15	MGN61530
	16	MGN61531
	20	MGN61532
	25	MGN61533
	30	MGN61534
	32	MGN61535
40	MGN61537	
50	MGN61538*	
63	MGN61539*	



* UL1077 to 40A only



Owing to changes in standards and equipment, the characteristics given in the text and images in this document are not binding until they have been confirmed with us.

Implementation

- > Designed for installation in modular enclosures and switchboards.
- > Easy mounting on symmetrical rail.
- > Easy connection using serrated tunnel terminals with flap.
- > Captive screws with mixed +/- indent.
- > Simplified clip-on combination of circuit-breaker with auxiliaries.
- > Use of comb busbars to simplify circuit-breaker connection.

Technical data

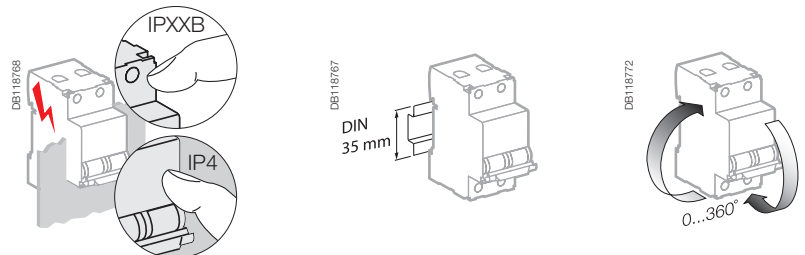
Catalogue numbers				
Operating voltage (Ue)	12...250 V DC	12...500 V DC		
Rated voltage (Un)	250 V DC	500 V DC		
Number of poles	1P	2P		
Curve	C	C		
Number of modules of 9 mm	2	4		
Diagrams	DB6116587	DB6116588	DB6116589	
Standards	UL1077	IEC 60947-2 EN 60947-2 GB 14048.2	UL1077	IEC 60947-2 EN 60947-2 GB 14048.2
Breaking capacity	5 kA/250 V DC	20 kA/110 V DC 10 kA/220 V DC 6 kA/250 V DC	5 kA/500 V DC	20 kA/220 V DC 10 kA/440 V DC 6 kA/500 V DC

Electrical technical data	
Rated service breaking capacity (Ics)	75 % of the ultimate breaking capacity (Icu)
Power loss	see module 92517
Magnetic tripping (Ii)	8.5 In (± 20 %) (compatible with curve C)
Impulse voltage (Uimp)	6 kV
Rated insulation level (Ui)	500 V DC

Endurance (O-C)	
Electrical	<ul style="list-style-type: none"> 3,000 cycles (where L/R=2 ms) 6,000 cycles where the circuit is resistive
Mechanical	20,000 cycles

Complementary technical data					
Degree of pollution	3				
Category	A (no delay in accordance with IEC / EN 60947-2 standards)				
Weight	<table border="1"> <tr> <td>1P</td> <td>128 g / 4.51 oz</td> </tr> <tr> <td>2P</td> <td>256 g / 9.03 oz</td> </tr> </table>	1P	128 g / 4.51 oz	2P	256 g / 9.03 oz
1P	128 g / 4.51 oz				
2P	256 g / 9.03 oz				

Environment					
Tropicalisation	Relative humidity: 95 % at 55°C / 131°F in accordance with IEC 60068-2 and GB 14048.2 standards				
Temperature	<table border="1"> <tr> <td>Operating</td> <td>-25°C to 70 °C / -13°F to 158°F</td> </tr> <tr> <td>Storage</td> <td>-40°C to 85°C / -40°F to 185°F</td> </tr> </table>	Operating	-25°C to 70 °C / -13°F to 158°F	Storage	-40°C to 85°C / -40°F to 185°F
Operating	-25°C to 70 °C / -13°F to 158°F				
Storage	-40°C to 85°C / -40°F to 185°F				



⚠ Failure to match polarity during connection may lead to a fire hazard and/or serious injury.

- The connection polarity must be observed (marked on the front panel).
- Use only with direct current.

Connection		Dimensions	
Rating	Tightening torque		
≤ 25 A	2.5 N.m / 22 lb.in		
> 25 A	3.5 N.m / 31 lb.in		