



APC

Keeping homes and businesses powered up with UPS and portable power solutions

Power. It's the magic that helps keep us secure, productive, connected, comfortable, fulfilled, clean, and healthy. It's something that's easy to take for granted...until we get an unwelcome reminder - in the form of a dreaded power blackout! However, the reality is that today, power fluctuations and outages are increasingly common, and are likely to remain a threat.

As a leading manufacturer of UPS and portable power solutions, Schneider Electric is playing a leading role in helping to protect critical IT applications and devices, in homes and businesses. So, the next time you're faced with power fluctuations or a full-blown power outage, you can count on us to help keep your home or business critical equipment powered up until the power grid is back up and running.

[se.com](https://www.se.com)

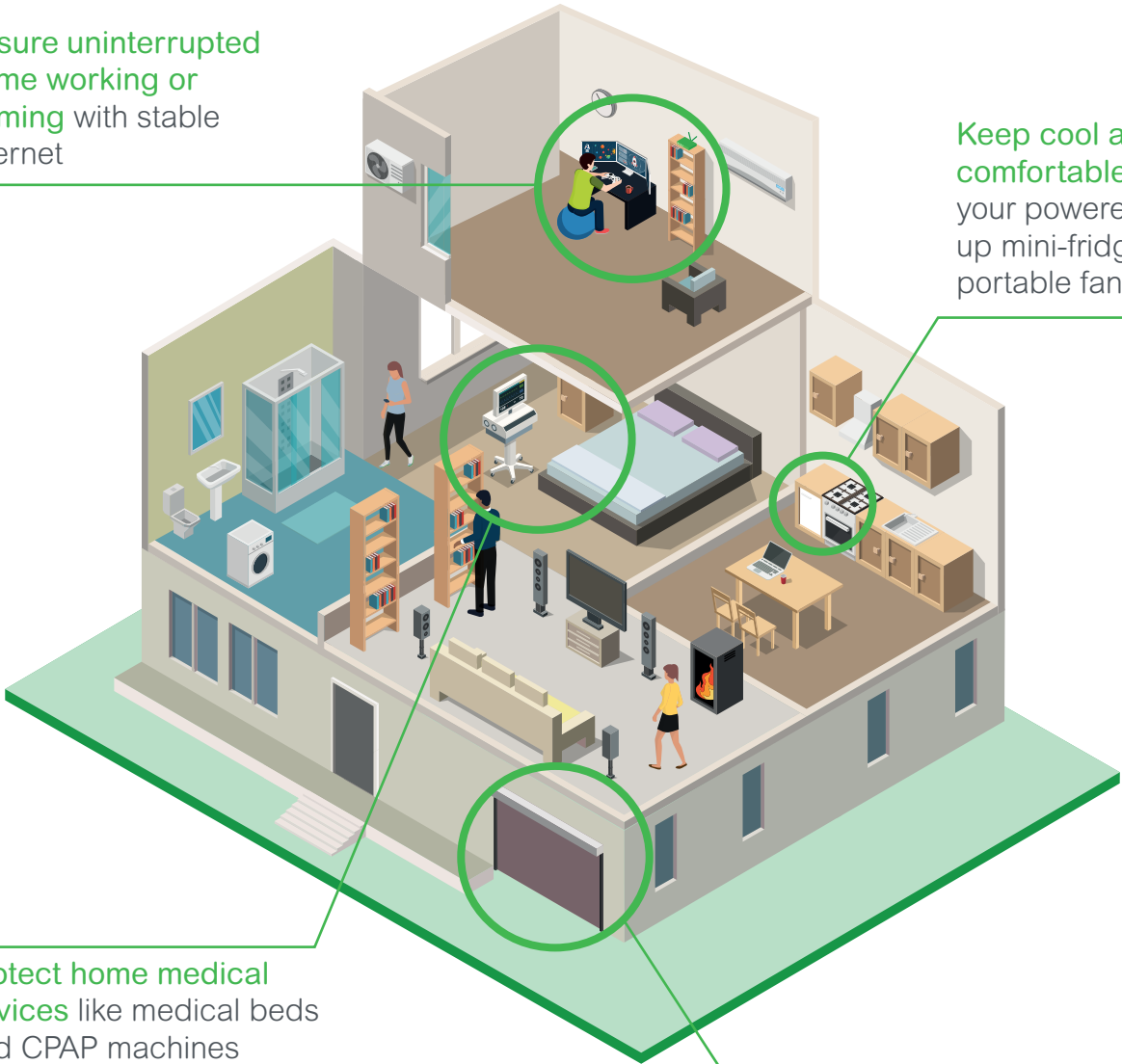
Life Is On

Schneider
Electric

Uninterrupted power for the home

Ensure uninterrupted home working or gaming with stable internet

Keep cool and comfortable with your powered up mini-fridge or portable fans



Protect home medical devices like medical beds and CPAP machines

Ensure home access, including garage doors and electric blinds



Reliable access management



	Estimated power (watts)	Autonomy*	Reference*
Lighting	10W	2h	BE650G2-UK
Electric gate	150W	Circa 10x open and close	BX16000MI
Garage door	500W	Circa 2x open and close	



Ensure home-office and gaming connectivity



	Estimated power (watts)	Autonomy*	Reference*
ADSL Router	17W	100min	CP12036LI
		90min	
Laptop	40W	50min	BX750MI
Printer	50W	40min	
Video Game console or Gaming PC	300W	10-20min	BGM2200B-UK



Protect your medical devices**



	Estimated power (watts)	Autonomy*	Reference*
Medical Bed	90W	60 movements	BE650G2-UK
CPAP Machine	45W	1h15	



Ensure long-term functionality of personal devices

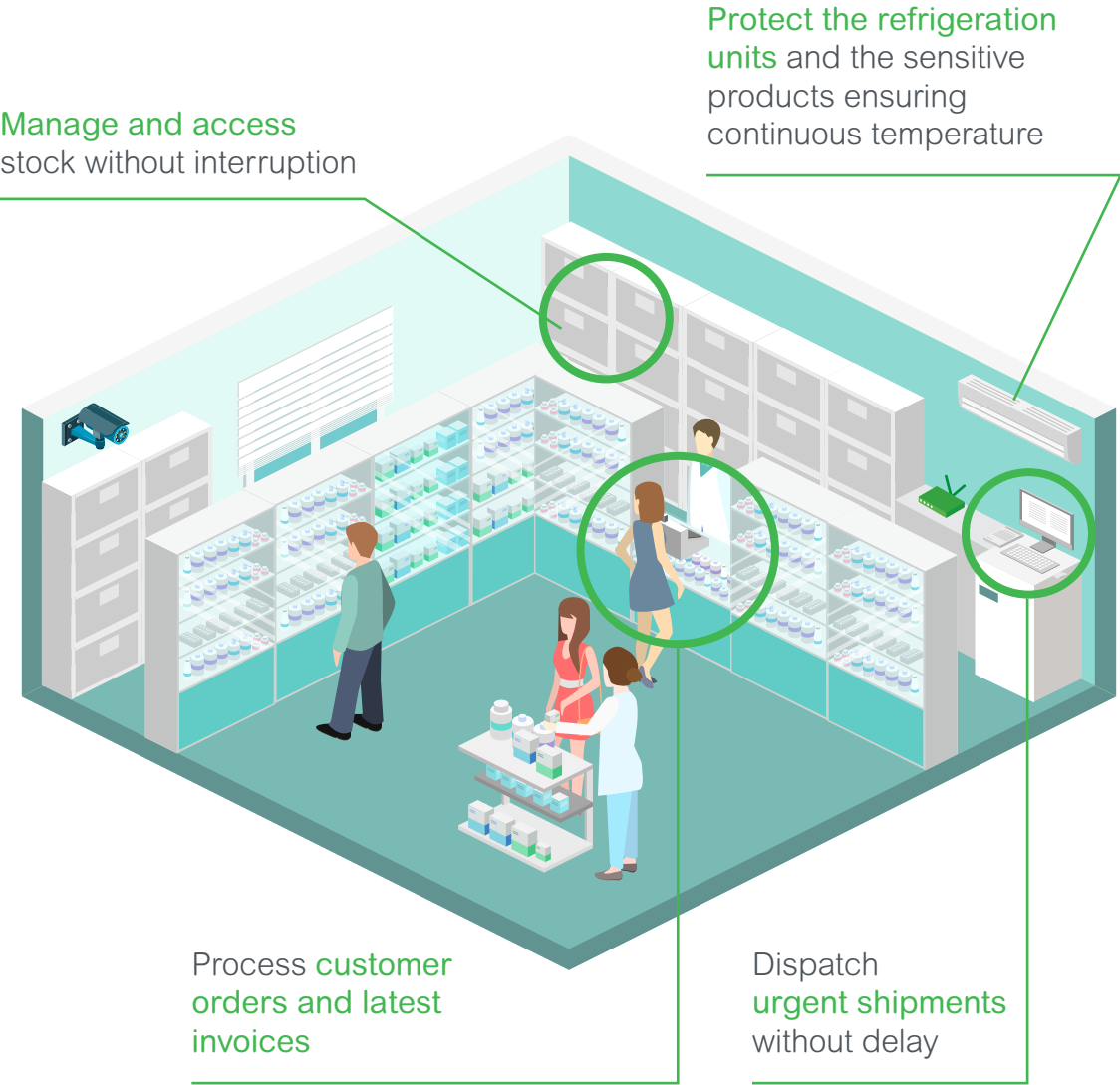


	Estimated power (watts)	Autonomy*		
		OffGrid PPS330 PSP100	OffGrid PPS500 PPS100 / PPS200	OffGrid PPS730 PPS100 / PPS200
Phone	15W	21 charges	32 charges	46 charges
Laptop	40W	11 charges	17 charges	25 charges
Mini fridge	60W	5h	7h	10h
Fan	15W	15h	24h	26h

*The autonomy values given are an indication. This depends on the power of the equipment to be protected and how it is used. The power of the device to be protected should be checked by a qualified electrician if necessary. Schneider Electric cannot be held liable in the event of a malfunction or lack of autonomy.

**To comply with the EMC standard: IEC/EN 60601-1-2, the UPS should be installed more than 2 meters from the patient.

Uninterrupted power for retail





Register your orders and invoice your customers



	Estimated power (in watts)	Autonomy*	Reference
Cash register	100W	3h34	SRV1KIL-E
IP Phone	15W	3h	SMT750IC
Wifi / router	17W	2h30 - 3h	SRV1KIL-E
PC + Screen	120W	2h	SMX750I



Protect your work tools



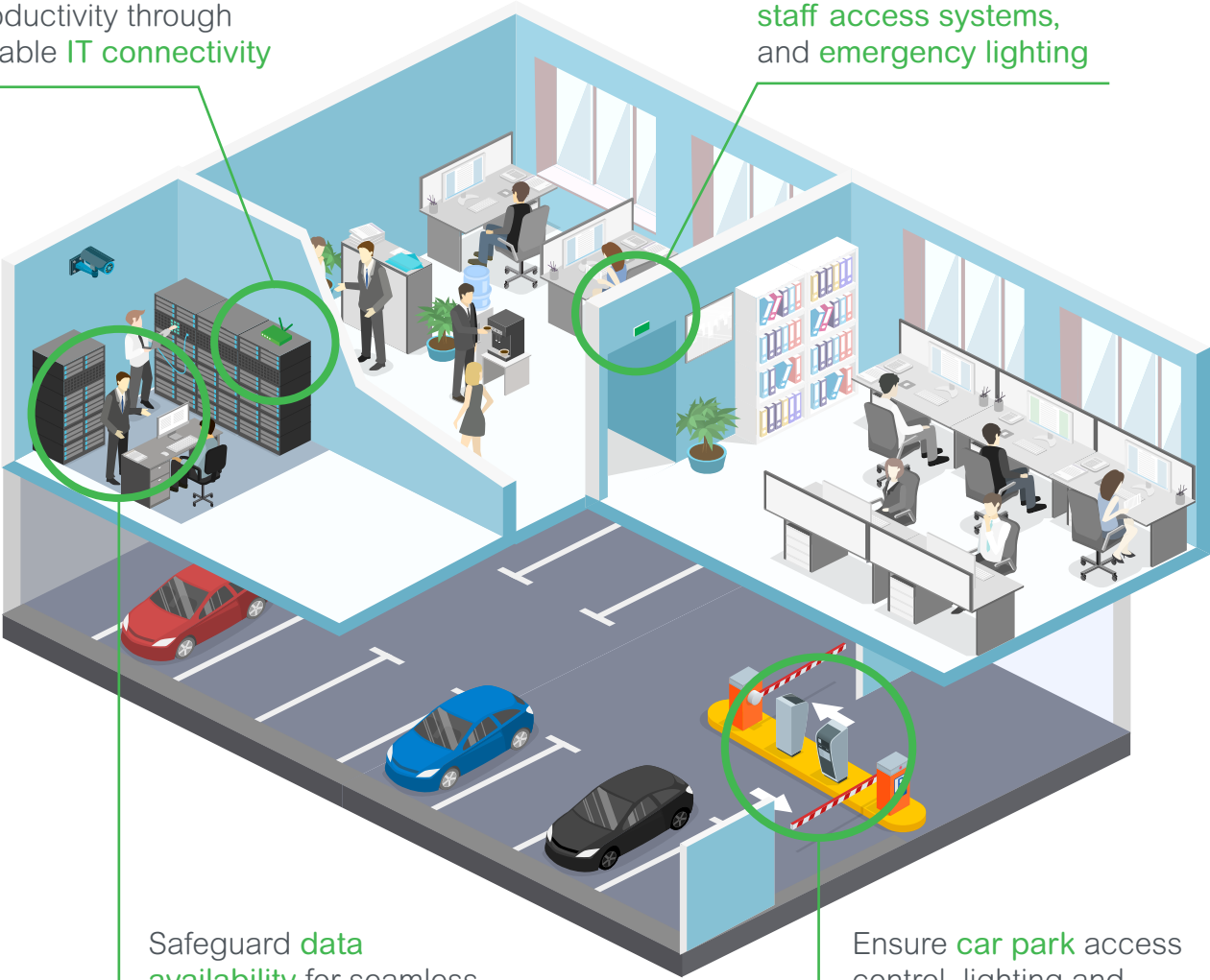
	Estimated power (in watts)	Autonomy*	Reference
Video surveillance and safety	300W	1h10	SRV1KIL-E
Sliding door	150W	Circa 60x open and close	SMT1000IC
Refrigeration unit	100W	1h40	SMC1500IC
	150W	1h20	SMC2000I
	300W	1h	SMC3000I

*The autonomy values given are an indication. This depends on the power of the equipment to be protected and how it is used. The power of the device to be protected should be checked by a qualified electrician if necessary. Schneider Electric cannot be held liable in the event of a malfunction or lack of autonomy.

Uninterrupted power for office premises

Guarantee office productivity through reliable **IT connectivity**

Maintain uptime of **CCTV, staff access systems, and emergency lighting**



Safeguard **data availability** for seamless business continuity

Ensure **car park** access control, lighting and garage door access



Continuous office productivity



	Estimated power (in watts)	Autonomy*	Reference
Router	15W	3h	SRV1KIL-E
VoIP Phone	15W	3h	
Wifi Repeater	17W	2h30	



Ensure office security



	Estimated power (in watts)	Autonomy*	Reference
Security and CCTV	300W	1h10	SRV1KIL-E
Access control devices	120W	3h05	SRV1KIL-E
Emergency Lighting	400W	50min	SMC3000I



Guarantee data availability



	Estimated power (in watts)	Autonomy*	Reference
Network-attached Storage (NAS)	150W	1h30	SRTL3KRM1UIC
Data storage server	300W	45min	



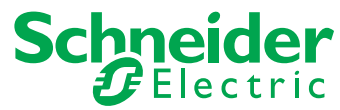
Maintain car park access control



	Estimated power (in watts)	Autonomy*	Reference
Emergency Lighting	400W	50min	SMC3000I
Access control system	120W	3h05	SRV1KIL-E
Garage door	500W	5x open and close	SMT1000IC

*The autonomy values given are an indication. This depends on the power of the equipment to be protected and how it is used. The power of the device to be protected should be checked by a qualified electrician if necessary. Schneider Electric cannot be held liable in the event of a malfunction or lack of autonomy.

Life Is On



[se.com](https://www.se.com)

Schneider Electric
35, rue Joseph Monier - CS30323
F92506 Rueil Malmaison Cedex

Conseils : 0825 012 999
Services : 0810 102 424

© 2025 Schneider Electric All rights reserved. Life Is On Schneider Electric is a commercial trademark owned by Schneider Electric SE, its subsidiaries and its affiliated companies. Owing to changes in the standards and equipment, the characteristics given in the text and images of this document are only binding after confirmation by us.

Life is On - Design: Stéphane Desprez - Photos: Shutterstock / Gettyimages
05/2025