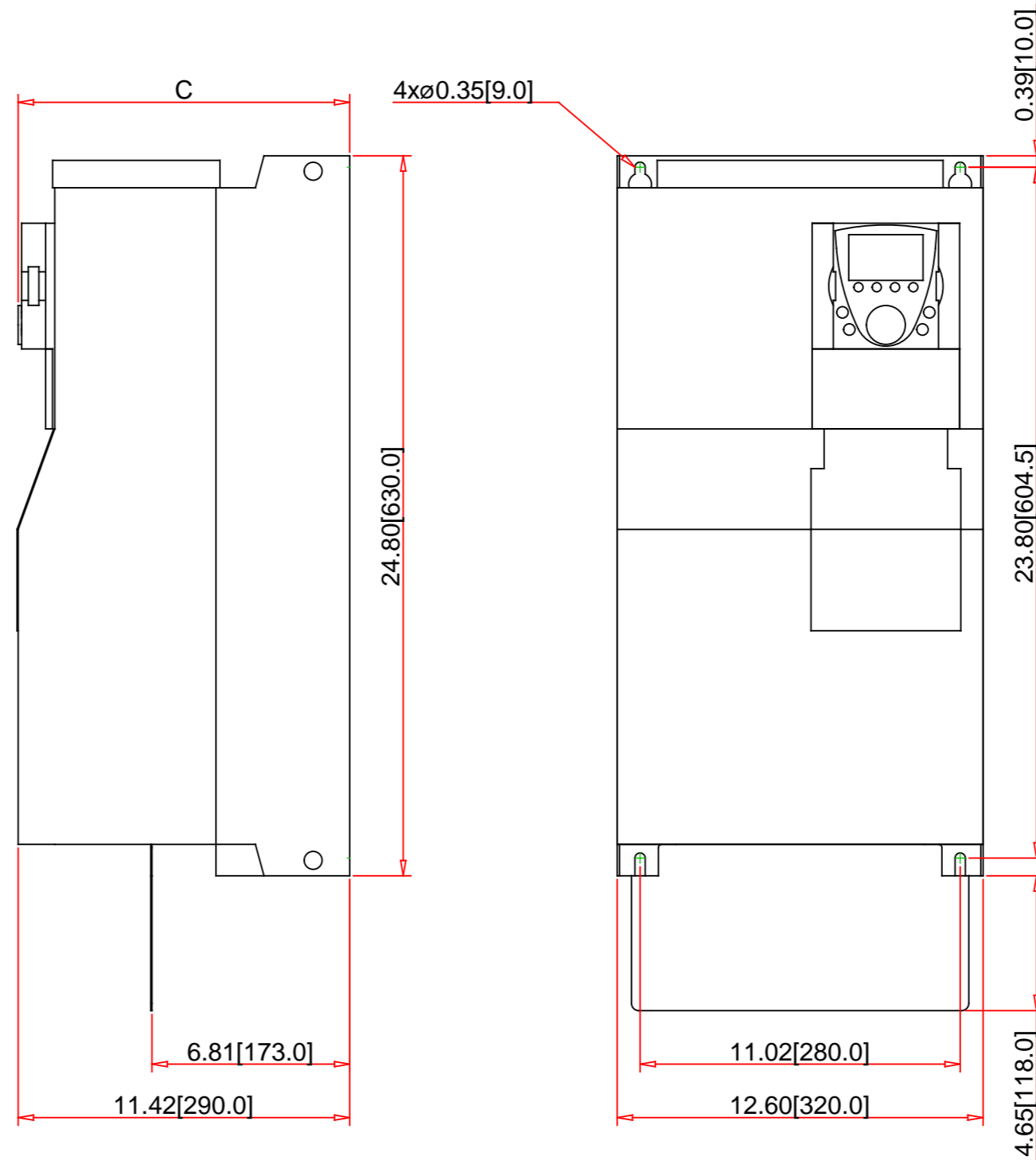


Depth C inches (mm)		
	With Keypad	Without Keypad
No option card	11.42[290.0]	10.39[264.0]
With 1 option card	12.32[313.0]	11.30[287.0]
With 2 options cards	13.15[334.0]	12.13[308.0]



Optional EMC grounding plate is shown, it may be removed if not needed in the application.

- Note:
- Drawings Not To Scale
 - Drawings Subject to Change Without Notice
 - Dimensions are inches next to [Millimeters]
 - Inch Dimensions are derived from the metric.

Part No.:

ATV71HD55N4

Schneider Electric United States
 North American Division
 Boston One Campus
 800 Federal Street
 Andover, MA 01810, USA
 Phone: +1 8773425173
 Email: CCC@us.schneider-electric.com

Technical Information:

Control Voltage:	24Vdc
Logic Input:	6
Analog Input:	2
Analog Output:	1
Communication:	Modbus and CANopen
Logic/Relay Output:	1 NO/NC, 1 NO
Weight [lb/kg]	99.21 / 45
UL File No.:	E116875
CSA File:	1650725
Other:	CE, ABS, DNV, GOST, RoHS, WEEE, C-Tick, NOM 117

Specification:

Description:	
Family:	Altivar 71
Product Line:	AC Drive
Application:	Constant Torque
Voltage Rating:	400/480VAC
HP Rating / kW Rating:	75 / 55
Output Ampere Rating:	116A
Enclosure Rating:	IP20
Frame Size:	8
Input Phase / Output Phase:	3-Phase / 3-Phase