

# Schneider Electric Altivar HVAC ATH600 DTM Library V1.1.3

## - Release Notes -

This document contains important information about the Altivar HVAC ATH600 DTM Library software component and Release Content.

### 1. Package Content

| Software Component Name         | Version  |
|---------------------------------|----------|
| Altivar HVAC ATH600 DTM Library | V1.1.3   |
| Altivar HVAC ATH600             | V1.1.3.0 |

### 2. Features

- > **Firmware Compatibility:** Supports firmware versions **V1.1IE02** and **V1.1IE03**.
- > **Device Reference Topology:** Altivar HVAC ATH600 supports device references ranging from **0.75kW to 250kW**.
- > **HVAC Functionality:** HVAC features are now available for broader application support.
- > **BACnet/IP Support:** Compatible with the BACnet/IP option card (VW3A3726).
- > **BACnet MSTP Support:** Enables communication via the BACnet MSTP protocol. Note: BACnet MSTP parameters can be configured through the DTM, when connected via supported communication protocols; however, the DTM does not support communication via BACnet MSTP.
- > **My Device Tab:** Displays detailed device characteristics.
- > **My Dashboard Tab:** Provides a consolidated view of device parameters on a single screen, allowing users to select additional parameters based on application requirements.
- > **Parameter List Tab:** Offers all configuration parameters necessary for ATH600 application setup.
- > **Parameter Layout Tab:** Displays the sketch view of the device parameters and also allows you to define the parameter settings of the device.
- > **Diagnostics Tab:** Provides detailed error and warning information along with troubleshooting configuration settings.
- > **Display Tab:** Enables monitoring of various parameter groups from ATH600.

> **Scope Tab:** Allows you to Record, Visualize, Analyze, and Save the trace of the parameters of the connected drive. Includes all parameters, including internal parameters, as part of channel parameters.

> **Device Functions:** Offers features such as Modify Topology, Control Panel, Factory Settings, Backup/Restore Device, HMI Personalization, Device Restart, and more for ATH600 configuration.

> **Import/Export Feature:** Allows saving ATH600 configuration files in **.cfg** format.

> **DTM Online Help:** Provides reference for ATH600 configuration settings.

> **Backup Image Support:** Import and export of backup image files (**.bki**) containing device parameter and security configurations.

> **Security Profile Setup:** Enables users to set security profiles when the device is in root (factory) state.

> **Admin Options Tab:** Facilitates configuration of cybersecurity settings.

>> **Secure connection:** new set of features to provide more secured connection to the device over Modbus Serial Fieldbus and BACnet/IP. DTM can monitor, control and configure the device which is certified with IEC62443-4-2 compliance.

>> **User Authentication:** Mandatory user authentication for every device connection attempt (enabled by default, can be disabled if required).

>> **Password Management:** Default password provided with each product; users are prompted to set a secure password based on customizable policy.

>> **Password and PIN policies:** can be modified via Admin Options.

>> **User Management:** Create and manage multiple users with roles and permissions.

>> **Import/Export of Security Files:** Import/Export of SECP files (\*.secp) for security configurations.

>> **Ports and Services Management:** Control access to device ports and services.

>> **Brute Force Mitigation:** Restricts multiple invalid login attempts; session timeout and re-authentication supported.

>> **Device Topology:** Lock/unlock device topology.

>> **System Use Notification:** Customize system use notification text displayed at first connection.

>> **Logs:** Download system, application, error, and warning logs.

>> **Date/Time Synchronization:** Sync device date/time with PC.

>> **After Sales Feature:** Grants access to Service Tab for troubleshooting by authorized personnel.

### 3. System Requirement

#### 3.1 Supported operating systems

This software can be installed on the following operating systems:

> Microsoft Windows 10 32/64-bit

> Microsoft Windows 11 64-bit

## 3.2 Recommended PC Requirements

| Equipment            | Recommended  |
|----------------------|--|
| Processor            | Intel(R) Core(TM) i3   |
| RAM                  | 4 GB   |
| Free Hard Disk Space | 2 GB   |
| Display              | Resolution: 1920 x 1080 pixels with 32 bit colors DPI: 96 (100%) |

## 4. Some restrictions which we are working on

> Currently, DTM supports the English language, and support for other languages will be provided through dedicated language packs in upcoming releases.

## 5. Container Supported

> SoMove V2.11.0 and above

## 6. Altivar HVAC ATH600 DTM

### 6.1 Versions Provided & Compatibility

| Activity                     | Version            |
|------------------------------|--------------------|
| Altivar HVAC ATH600 DTM      | V1.1.3.0           |
| Altivar HVAC ATH600 Firmware | V1.1IE02, V1.1IE03 |

### 6.2 Known issues or Observations:

> In the current **SoMove 2.11.0 version**, firmware update of **BACnet/IP** option module cannot be performed.

>>This capability is planned in a future SoMove release.

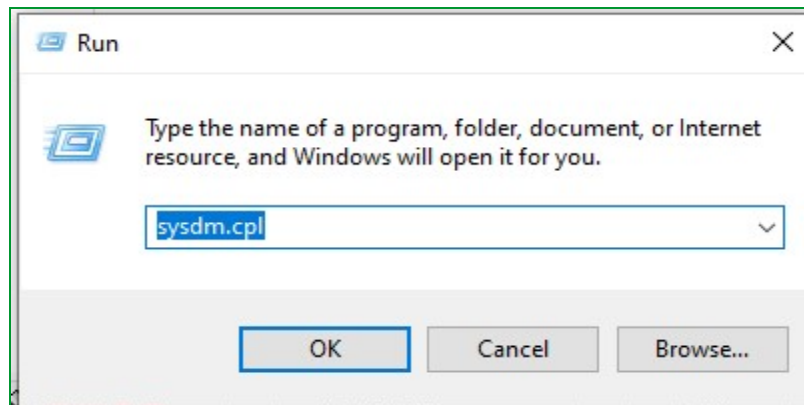
## 7. Troubleshooting

> Please ensure below troubleshooting steps, failing to comply with these might results in crashes, hangs or other possible commissioning-blocking issues.

### 7.1 Modify Temp location:

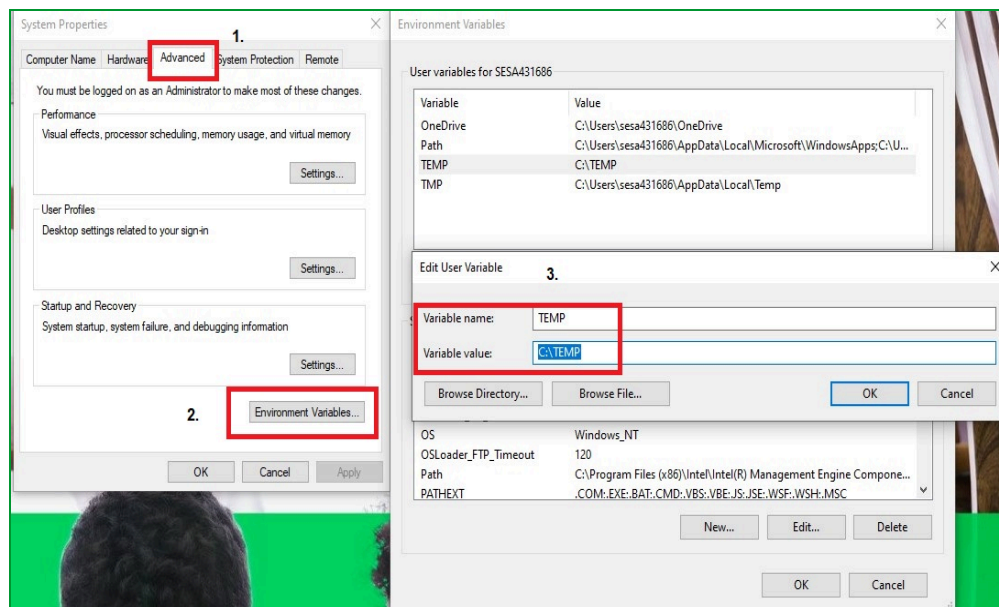
> Press 'Windows Key' and 'R Key' together, It will open "Run Window".

> Type "sysdm.cpl" in "Run Window", Click on "OK"



> Navigate to Advanced tab, Click on environment variables button.

> Edit the temp variable entry from "%USERPROFILE%\AppData\Local\Temp" to "C:\Temp".



If the issue still persists, please contact the support team.