

Schneider Electric Altivar HVAC ATH200 DTM Library V1.1.6

- Release Notes -

This document contains important information about the Altivar HVAC ATH200 DTM Library software component and Release Content.

1 Package Content

Software Component Name	Version
Altivar HVAC ATH200 DTM Library	V1.1.6
ATH200	V1.1.6.0

2 Features

2.1 Features V1.1.6.0

>**ATV Logic Support:** Programmable logic functions allow you to write your own application for the ATH200 variable speed drive.

2.2 Features V1.1.4.0

>**Compatibility:** Supports firmware version V1.1IE01.

>**HVAC Functionality:** HVAC features are now available for broader application support.

>**BACnet/IP Integration:** Compatible with the BACnet/IP option card (VW3A3726).

>**BACnet MSTP Support:** Enables communication via the BACnet MSTP protocol. **Note:** BACnet MSTP parameters can be configured through the DTM; however, the DTM does not support communication via BACnet MSTP.

>**Safety Functionality:** The Safety tab includes support for the STO (Safe Torque Off) function.

>**Device Overview:** The My Device tab presents detailed device characteristics.

>**Unified Monitoring:** The My Dashboard tab allows users to monitor key parameters on a single screen, with customizable views based on application needs.

>**Parameter Configuration:** The Parameter List tab provides access to all configuration parameters for setting up ATH200 applications.

>**Diagnostics Tools:** The Diagnostics tab offers detailed error and warning information, along with troubleshooting configuration options.

>**Advanced Display:** The Display tab enables in-depth monitoring of parameter groups from the ATH200.

>**Device Management Functions:** Includes tools such as Edit Topology, Control Panel, Factory Settings, HMI Personalization, Save/Restore, and Multiconfiguration.

>**Import/Export Capability:** Users can save and load ATH200 configuration files in .cfg format.

3 System Requirement

3.0 Minimum PC Requirements

Equipment	Minimum
-----------	---------

Processor	Pentium 4 / Core 2 Duo, 2 GHz
RAM	2 GB
Free Hard Disk Space	1 GB
Display	Resolution: 1366 x 768, 1600 x 900 and 1920 x 1080 pixels. DPI: 96 (100%) or 120 (125%).

3.1 Recommended PC Requirements

Equipment	Recommended
Processor	Intel(R) Core(TM) i3
RAM	4 GB
Free Hard Disk Space	2 GB
Display	Resolution: 1920 x 1080 pixels. DPI: 96 (100%) or 120 (125%).

4 Container Supported

> Support from SoMove V2.11.0 and above

5 Restrictions

1. Connection lost issues are observed when the application is connected with the device for more than 30 minutes.

6 Known Issues

1. DTM libraries cannot be installed on some computers due to access restriction of certain folder. => **See Troubleshoot section 7.0**
2. Command panel sometimes cannot be made inactive when the ADC parameter in automatic DC injection is changed to continuous and executed a Run and stop.
3. When the device is being connected from two instances of the DTM, upon the second connection attempt the first connection is also lost.
4. A .cfg file created using Multiloader may display incorrect data and may not function correctly, if imported into SoMove.

7 Troubleshoot

1. Store to Device through Modbus TCP / BACnet/IP : When the Channel policy is Disabled in the drive, and Enabled in the DTM, first attempt of the transfer would enable the channel policy and transfer is aborted, same operation needs to be performed again The second attempt will pop up with the login dialog for the user to enter the proper credentials to proceed with the transfer
2. Load from Device - If a load from device action is interrupted by a device power OFF, then the subsequent load from device actions will fail. Resolution: * Power ON the device and try Load from device again, or if problem persists still then *

Restart SoMove and try Load from device again operating systems

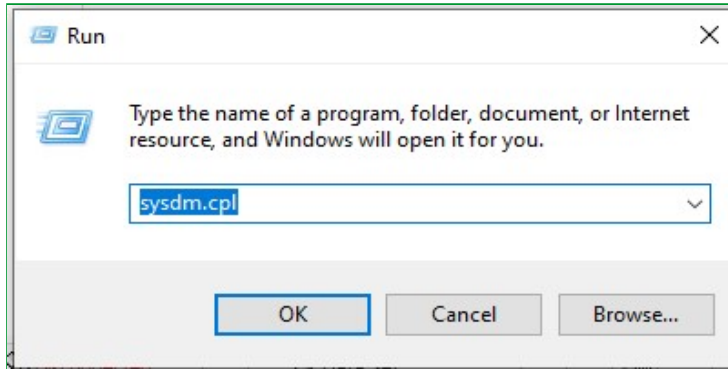
3. Online help: Adobe version 10 and above, the user has to disable the Protected Mode at startup in the Adobe Reader preference: In Adobe Reader X, go to Edit>Preferences>General and uncheck "Enable Protected Mode at startup".

4. Before installing the new DTM version, ensure that SoMove is not running in your PC/system.

7.0 Modify Temp location:

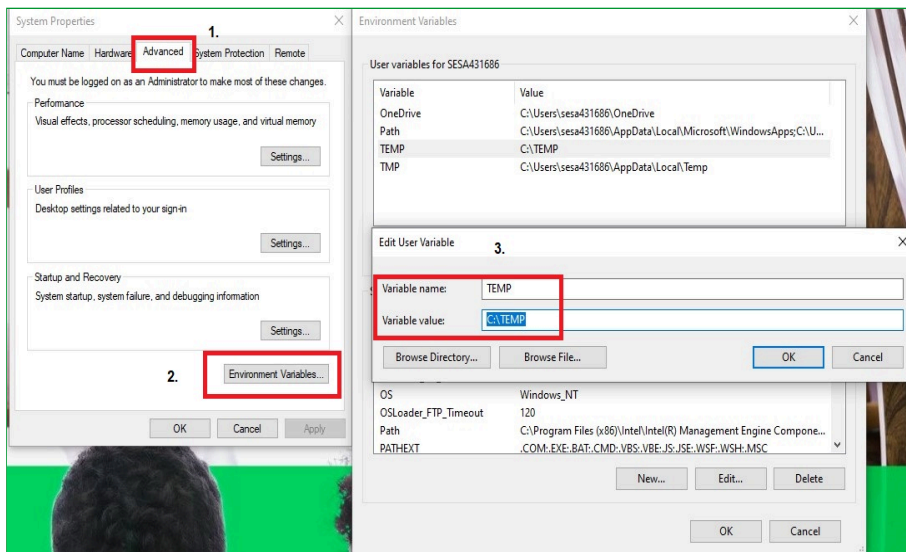
> Press 'Windows Key' and 'R Key' together, It will open "Run Window".

> Type "sysdm.cpl" in "Run Window", Click on "OK"



> Navigate to Advanced tab, Click on environment variables button.

> Edit the temp variable entry from "%USERPROFILE%\AppData\Local\Temp" to "C:\Temp".



If the issue still persists, please contact the support team.