


8 7 6 5 4 3 2 1

**GENERAL NOTES**

- TYPE 3R ENCLOSURE. FREE STANDING. FLOOR MOUNTED. CODE GAUGE FORMED STEEL FRAME CONSTRUCTION.
- FRONT & REAR DOORS HAVE A STAINLESS STEEL, PADLOCKABLE HANDLE.
- FINISH: TYPE 3R: ANSI 61 GRAY POLYESTER SEMI GLOSS ELECTROSTATIC POWDER.  
TYPE 3RX: EXTERIOR CONSTRUCTED OF CODE GAUGE TYPE 304 STAINLESS STEEL.
- RECOMMENDED CLEARANCES:  
FRONT: 48 INCHES REAR: 36 INCHES
- A FULL RATED NEUTRAL CONNECTION FOR EACH SOURCE AND THE LOAD IS OPTIONAL. WHEN PROVIDED IT IS IN ONE OF THE FOLLOWING FORMATS AS SPECIFIED BY THE CATALOG NO. NEUTRAL TYPE;
  - SOLID (COPPER BUS) NEUTRAL
  - SWITCHED NEUTRAL POLE
  - OVERLAPPING NEUTRAL POLE "G7ATB" ONLY (NOT AVAILABLE ON G7ACUB/G7ADUB/UTATB/U7ACTB/U7DTB UNITS)
- DESIGNED FOR FRONT & REAR ACCESS
- FOR SPECIFIED TRANSFER SWITCH, REFER TO OPERATOR'S MANUAL PROVIDED WITH UNIT.
-  CENTER OF GRAVITY.
- EXTERIOR VENTS ARE SUPPLIED WITH POLYESTER DUST FILTERS.
- PROVIDED WITH REMOVABLE LIFTING EYES.
- LIFTING PLATES: SECTIONS ARE SUPPLIED WITH (4) LIFTING PLATES. INSPECT PLATES FOR DAMAGE AND TORQUE BOLTS TO 45 FT LBS BEFORE USE. REFER TO ANSI/NEMA PB 2.1 FOR PROPER HANDLING OF EQUIPMENT. AFTER INSTALLATION OF SECTION, REMOVE LIFTING PLATES. REINSTALL BOLTS INTO EXTERIOR HOLES AND TORQUE TO APPROXIMATELY 20 FT LBS.

**SPECIFICATIONS**

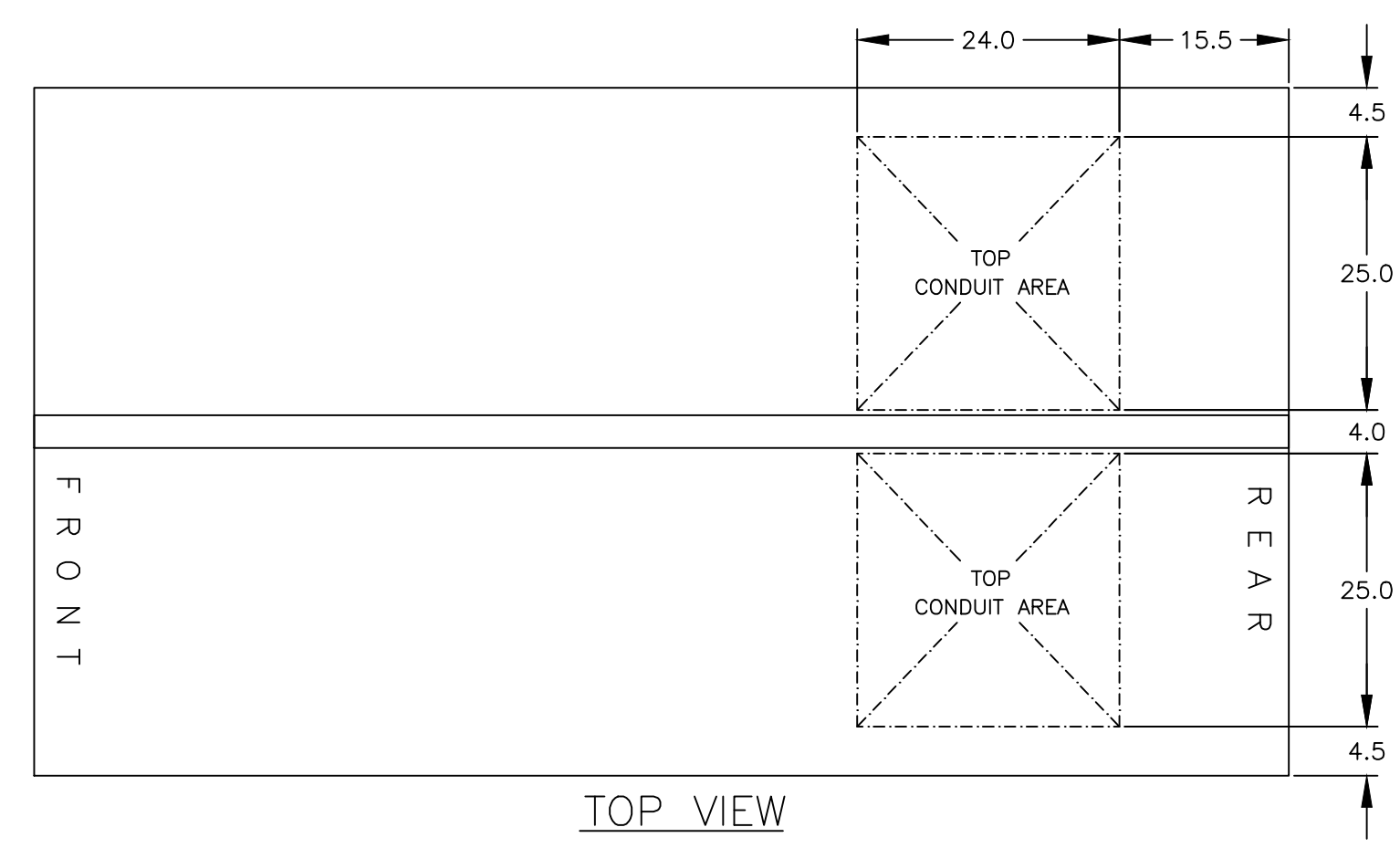
- SERVICE VOLTAGE:  
SYSTEM RATING: 4000 AMPS, 3Ø, 4W.  
GROUND BUS- 800 AMPS  
SHORT CIRCUIT RATING- 100,000 RMS SYM AMPERES @ 480V.  
THE NORMAL & EMERGENCY SOURCE INPUTS MUST BE PROTECTED BY A REMOTE OVERCURRENT PROTECTION DEVICE AS LISTED ON THE MARKINGS ON THE TRANSFER SWITCH.
- NEUTRAL BUS: 4000 AMPS
- APPLICABLE LABELS: U.L. 1008

**CABLING NOTES**

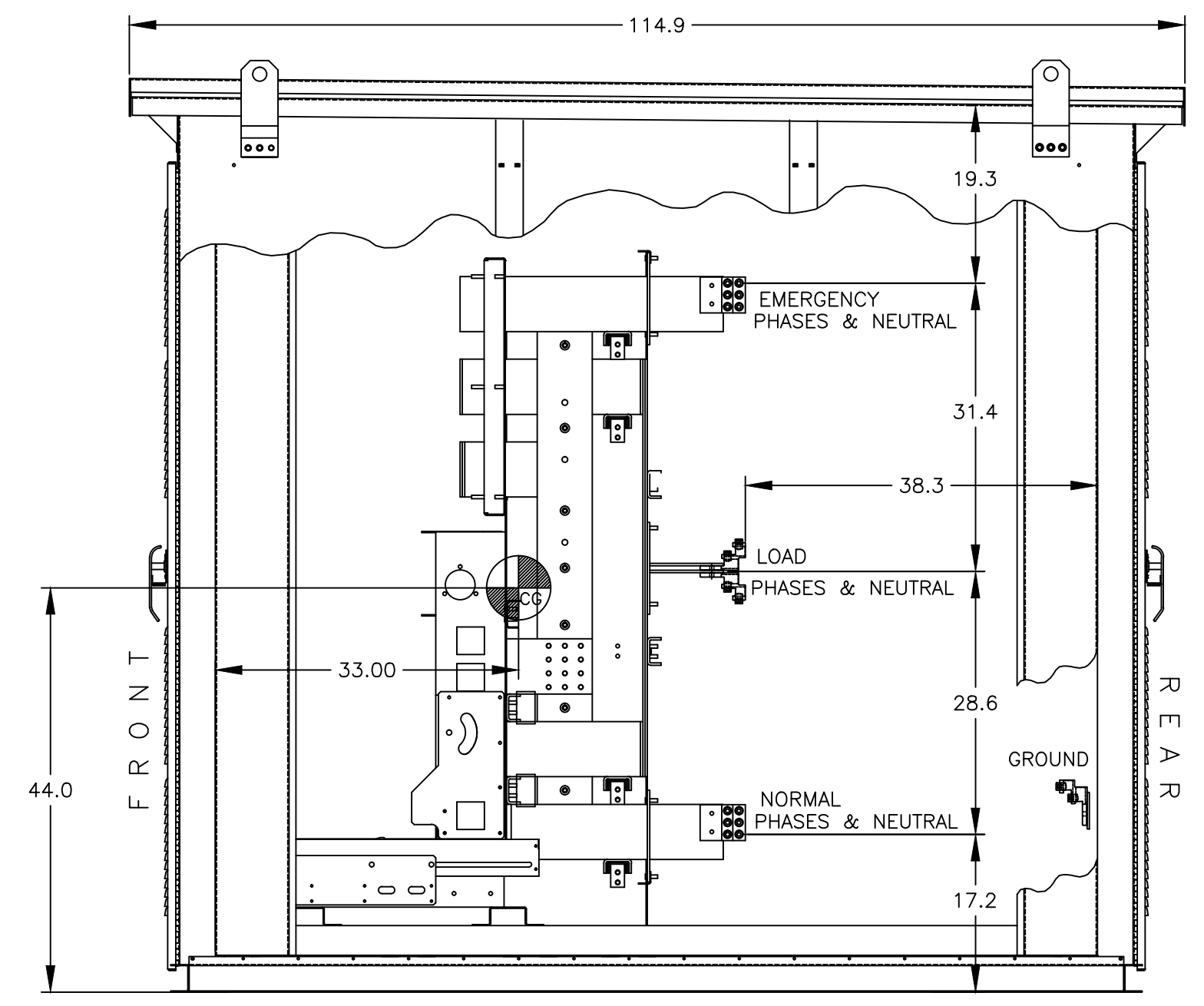
- ALL SIZES SUPPLIED STANDARD WITH MECHANICAL (SCREW TYPE) LUGS.
  - LUG MATERIAL: ALUMINUM ALLOY 6061-T6 WITH ELECTRO TIN PLATED FINISH.
  - SCREW MATERIAL: ALUMINUM ALLOY 6262-T9 WITH ELECTRO TIN PLATED FINISH.
  - UL LISTED, CSA CERTIFIED.
  - LUG SCREW TIGHTENING TORQUE PER UL 486B: 19 FT-LBS.
  - SUITABLE WIRE BENDING SPACE IS PROVIDED.
- OPTIONAL LUGS MAY BE SUPPLIED.
  - UL LISTED, CSA CERTIFIED.
  - LUG MOUNTING HARDWARE TIGHTENING TORQUE: (REFER TO WITHSTAND CURRENT RATING LABEL PROVIDED ON EACH TRANSFER SWITCH).
  - SUITABLE WIRE BENDING SPACE IS PROVIDED AS PER THE NEC.
- CONSULT FACTORY FOR OTHER TERMINATION REQUIREMENTS.

**NOTES "G" 4000 AMPS AND "U" 2600-4000 AMPS**

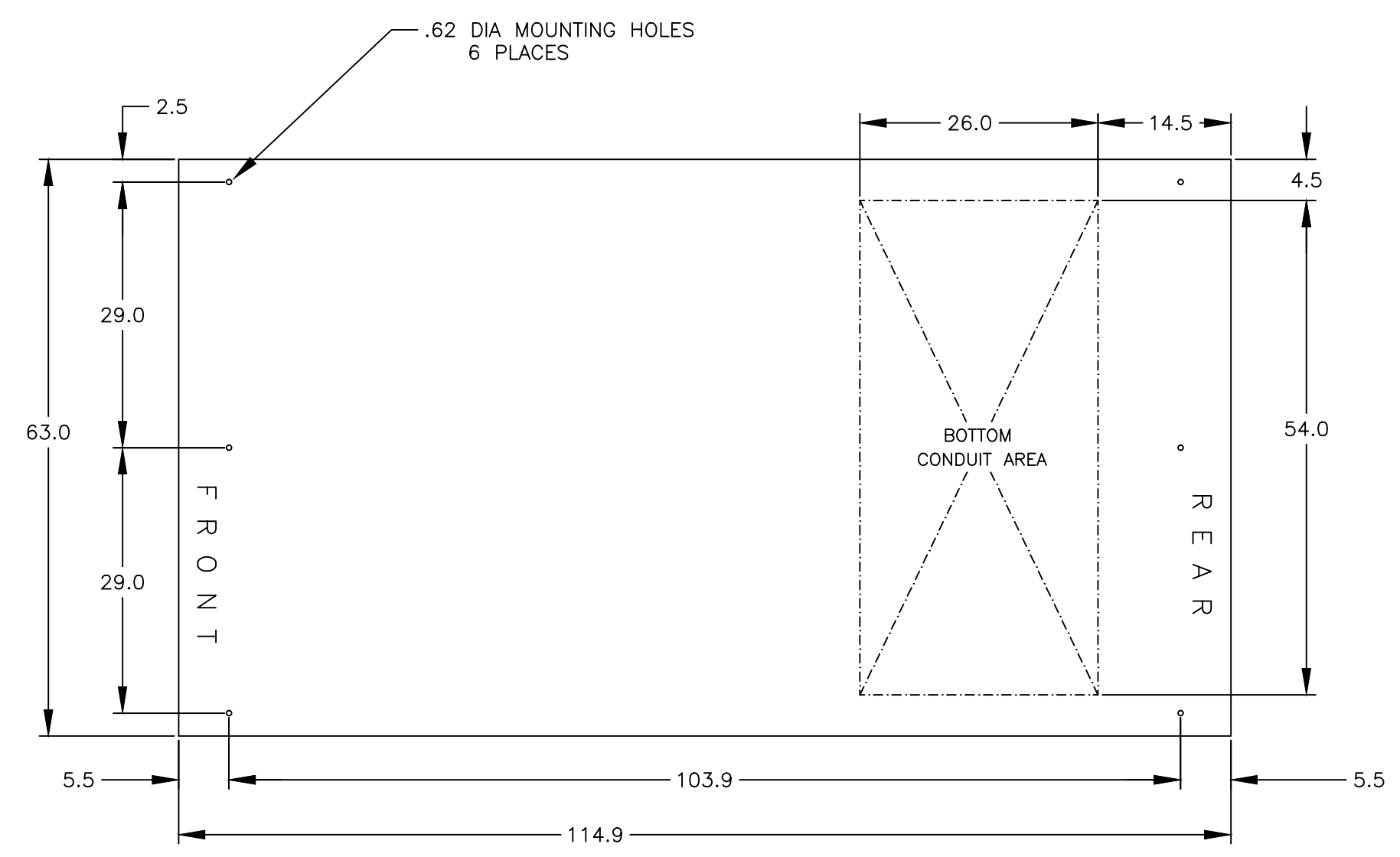
- SUPPLIED WITH STANDARD MECHANICAL (SCREW TYPE) LUGS ON THE NORMAL, EMERGENCY & LOAD BUS STABS. TWO (2) LUGS PER PHASE AND NEUTRAL, SUITABLE FOR CONNECTION OF TWELVE (12) 1/0 AWG - 750MCM CU/AL CABLE (SEE NOTE "A" BELOW).
  - SUITABLE WIRE BENDING SPACE IS PROVIDED FOR UP TO TWELVE (12) 750MCM CABLES PER NEC.
- GROUND LUGS ARE PROVIDED STANDARD AS FOLLOWS;  
(36) 1/0 - 750MCM CU/AL CABLE



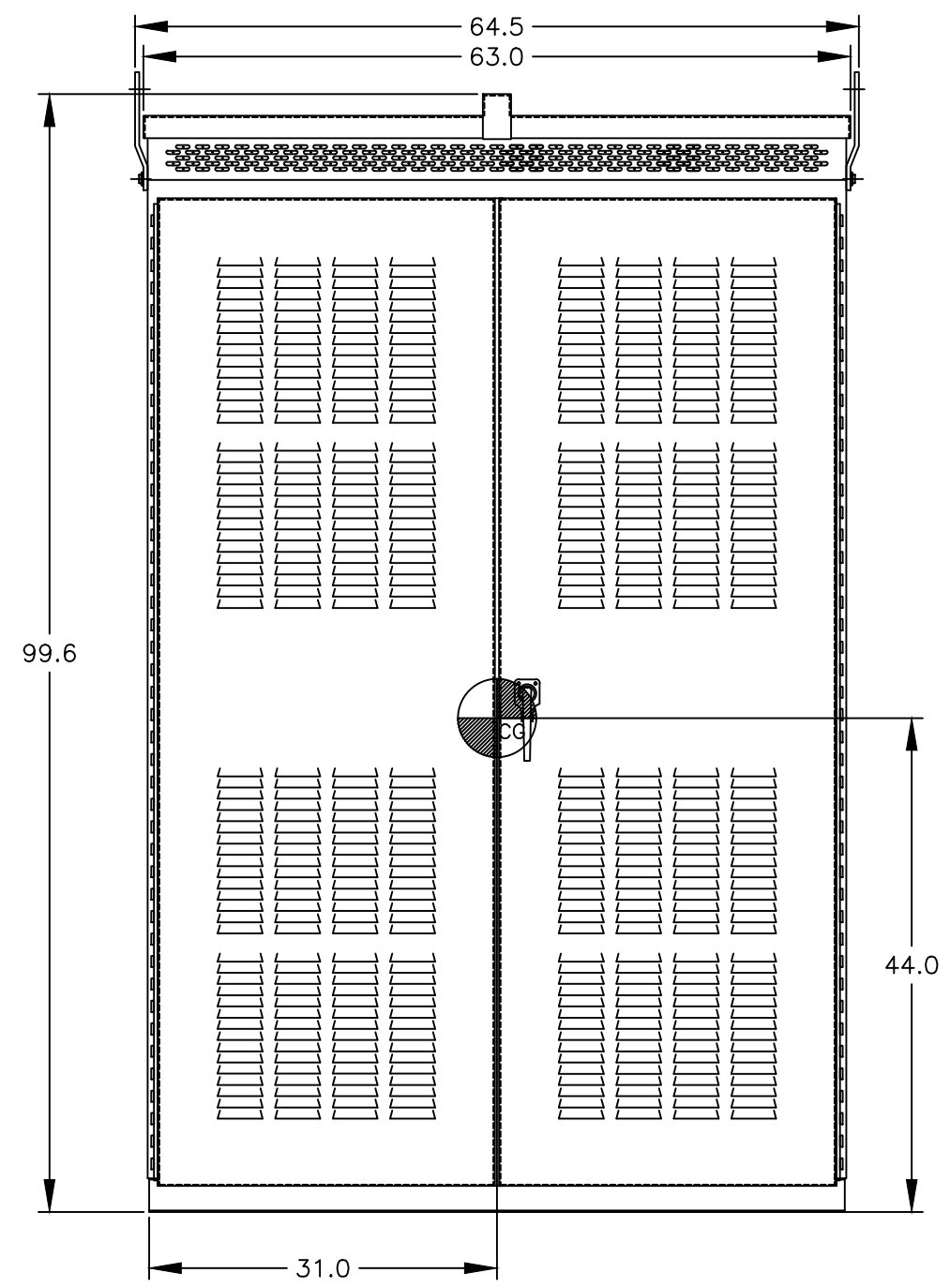
TOP VIEW



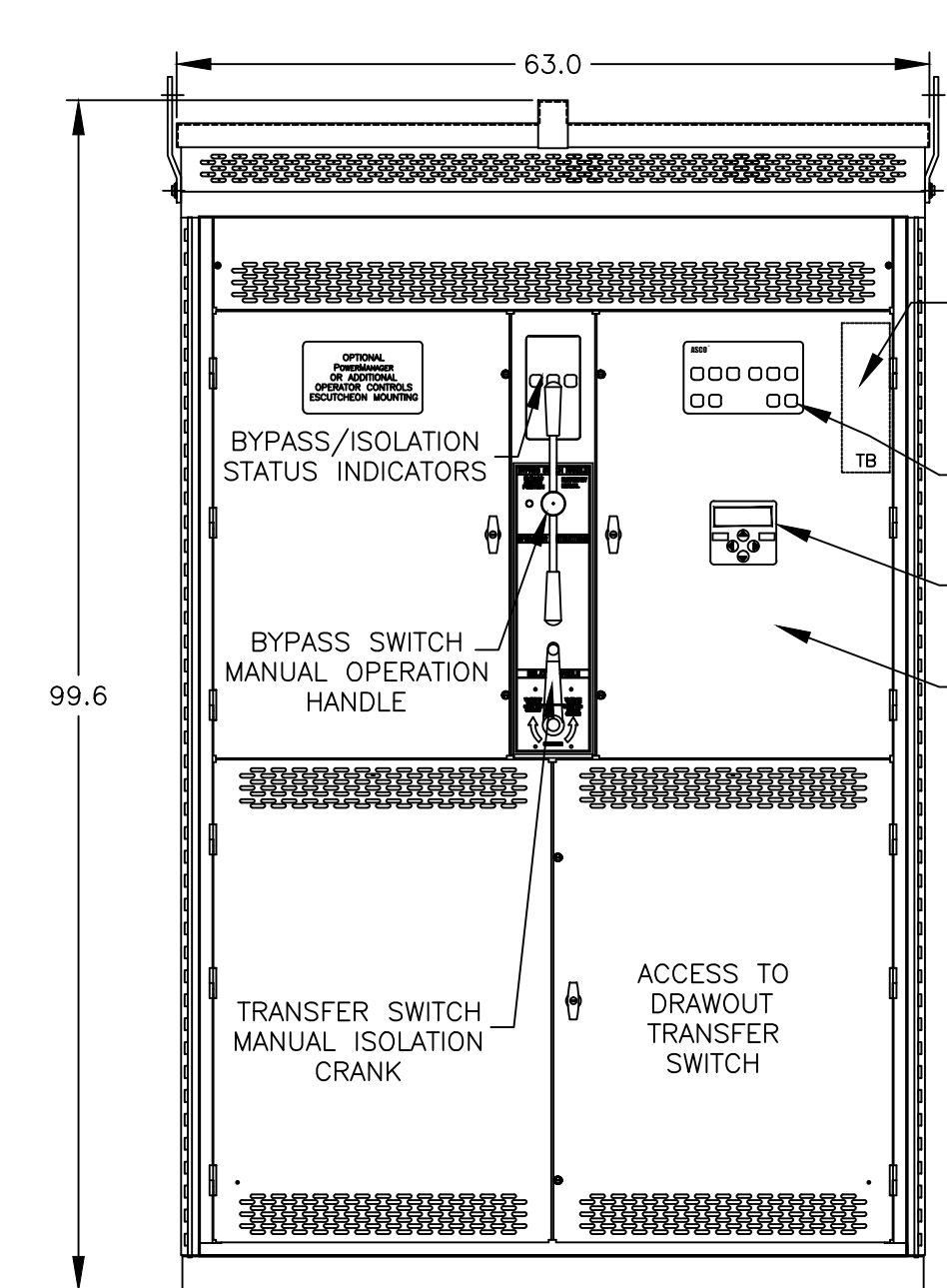
SIDE VIEW



PLAN VIEW



FRONT VIEW



FRONT VIEW WITHOUT EXTERIOR DOORS

REV. TO SHEET	ECN NO.	BY	APP.	DATE
A	244591	AE	BK	10/01/13
	241518	DP	RN	3/19/13
PROJECT NAME:				
OUTLINE		MOUNTING		
7000 SERIES (GA*TB 4000A,U7A*TB 2600-4000A) 3PH				
TYPE 3R 100 X 63 X 115				
DRAWN BY	DATE	MANUFACTURING TOLERANCES TO BE IN ACCORDANCE WITH ASCO PROCEDURE MP-1-003. FOR PLASTIC PARTS SEE MP-1-005	ASSEM. REF. NO.	COMPUTER GENERATED DRAWING
CHECKED	3/19/13			SCALE 1:1 SIZE DS
PROJECT APPROVAL		PROPERTY OF ASCO POWER TECHNOLOGIES. USE PERMITTED FOR OUR WORK ONLY. ALL RIGHTS OF DESIGN OR INVENTION ARE RESERVED.		DWG. NO. 727401-012
FINAL APPROVAL		<b>ASCO</b> ASCO POWER TECHNOLOGIES, L.P. FLOHAM PARK, NEW JERSEY 07932 U.S.A.		DRAWING A ECN NO. 244591 SHEET 1 OF 1

8 7 6 5 4 3 2 1