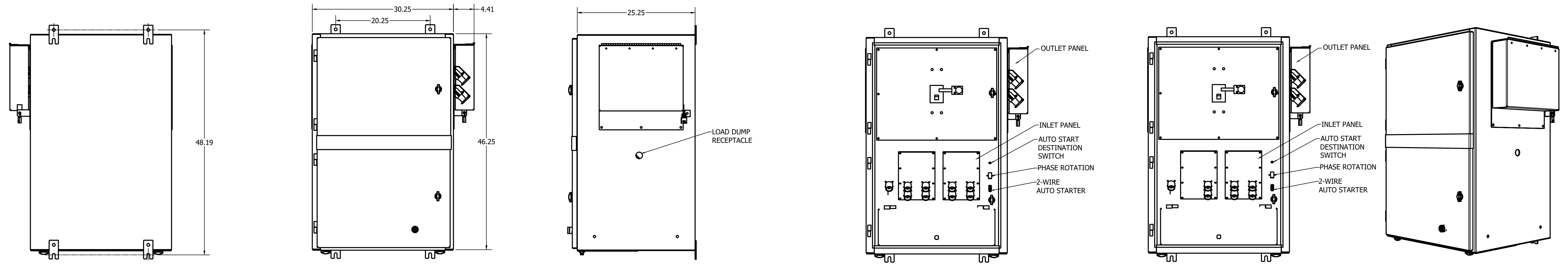


# 600 AMP DUAL PURPOSE QUICK CONNECT PANEL



REAR VIEW

FRONT VIEW WITH DOORS

RIGHT VIEW

FRONT VIEW 3P+N+G WITHOUT OUTER DOORS

FRONT VIEW 3P+G WITHOUT OUTER DOORS

WALLMOUNT

**NOTES:**

- BOTTOM INLET PANEL:**
  - FOR USE ONLY FOR CONNECTION OF A GENERATOR TO THE SOURCE TERMINALS OF A TRANSFER SWITCH, SUCH THAT THE INLETS ARE ENERGIZED FROM THE GENERATOR.
  - ETL LISTED TO UL1008 STANDARDS AS A TRANSFER SWITCH ACCESSORY.
  - 16 SERIES MALE CONNECTORS.
- SIDE OUTLET PANEL:**
  - FOR CONNECTION OF A LOAD BANK TO THE LOAD SOURCE FROM THE PERMANENT GENERATOR.
  - ETL LISTED TO UL891 STANDARDS AS A LOAD BANK OUTLET CABINET.
  - 16 SERIES RECESSED FEMALE CONNECTORS WITH FLIP COVERS.
  - PADLOCKABLE COVER OVER THE LOAD BANK RECEPTACLES.
  - LOAD DUMP RECEPTACLES WITH FLIP COVER.
- PANEL RATINGS:**

600V MAX, 50/60 Hz, 150-800A, 3PH/3W OR 3PH/4W, LISTED UL891 STANDARD.
- WCR RATING:**

25K RMS SYMMETRICAL AMPS, 240 VAC MAX.,  
18K RMS SYMMETRICAL AMPS, 480 VAC MAX.,  
14K RMS SYMMETRICAL AMPS, 600 VAC MAX.,
- ENCLOSURE:**
  - TYPE 3R CONSTRUCTION, FOR OUTDOOR USE ONLY.
  - FINISH, ANSI 61 GREY POWDER COAT.
- REMOVABLE GASKETED SIDE ACCESS PANELS FOR ADDITIONAL CONDUIT AREAS.**
- RECOMMENDED CLEARANCE:**
  - FRONT 29 INCHES.
  - RIGHT SIDE 18.25 INCHES.
  - LEFT SIDE 28 INCHES.
- REMOVABLE GROUNDING STRAP(S) ARE INCLUDED CONNECTING THE GREEN CAMLOCKS TO THE ENCLOSURE.**
- NO NEUTRAL TO GROUND BONDING PROVISIONS INCLUDED.**
- CAMLOCK CONNECTORS ARE SERIES 16 COMPATIBLE. 400A RATED.**
- CASTELL OR KIRK KEY LOCKS MUST BE INSTALLED ON GENERATOR CONNECTION DOOR AND PERMANENT GENERATOR BREAKER WHICH SERVES AS AN INTERLOCK BETWEEN PERMANENT GENERATOR AND PORTABLE GENERATOR.**

**CABLING:**

- ALL UNITS SUPPLIED WITH MECHANICAL (SCREW TYPE) LUGS. LUGS ARE UL LISTED, TIN PLATED, ALUMINUM ALLOY COMPATIBLE WITH COPPER OR ALUMINUM CABLES. (SEE TABLE BELOW)
- LUG SCREWS ARE TIN PLATED, TORQUE TO 19 FT-LBS PER UL4868.
- LUGS ARE ATTACHED TO COPPER PLATED WITH FACTORY SUPPLIED BOLTS, TORQUED TO 30 FT-LBS.
- DUAL LUGS FOR THRU-CONNECTED UNITS.

**STANDARD FEATURES:**

1. CASTELL™ TRAPPED KEY INTERLOCK ACCESS TO PORTABLE GENERATOR INLETS.
2. CASTELL™ LOCK AND KEY FOR PERMANENT GENERATOR BREAKER AND TOP SECTION.
3. PHASE ROTATION MONITOR FOR TEMPORARY POWER CONNECTION.
4. TWO WIRE AUTO START TERMINALS.
5. LOAD DUMP RECEPTACLE L1-15R 125V TWIST LOCK RECEPTACLE.

**CIRCUIT BREAKER LD136600U31X:**

1. SQUARE "D" 80% RATED TYPE "LDL", 600AF/600AT MOLDED CASE, ELECTRONIC TRIP UNIT WITH FIXED LONG AND INSTANTANEOUS TRIP, SHORT CIRCUIT RATING: AIC 18,000 RMS SYM @ 480V.
2. UL489.

**OPTIONAL ACCESSORIES:**

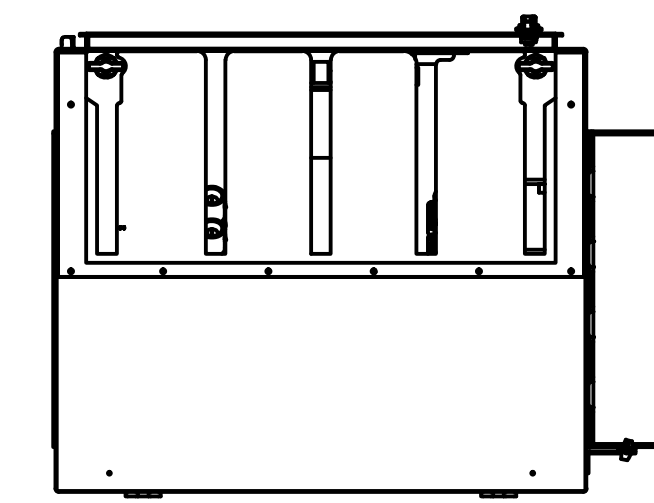
ACC. 147QC - COLOR CODING FOR CANADIAN CAMLOK CONNECTORS  
THREE PHASE:  
RED (PHASE A), BLK (PHASE B), BLU (PHASE C), NEUT. WHEN REQUIRED (WHT)

**INSTALLATION:**

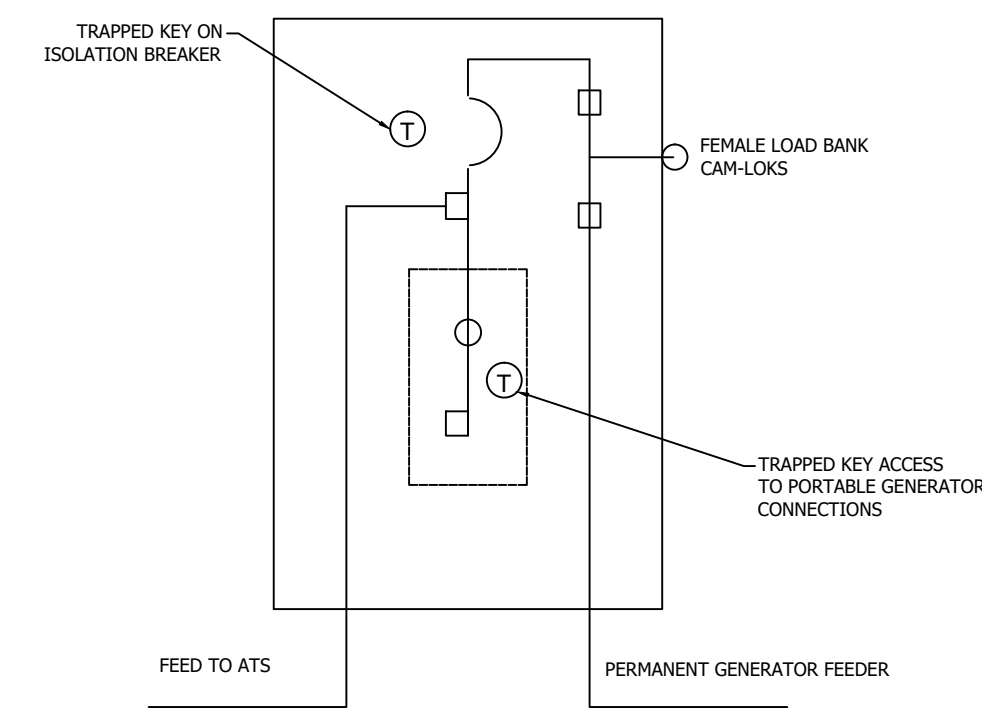
- SURFACE TO WHICH THE PANEL IS TO BE INSTALLED AND THE INSTALLATION METHOD / HARDWARE MUST BE CAPABLE OF SUPPORTING THE WEIGHT OF THE PANEL (WEIGHTS SHOWN IN TABLE BELOW) AS WELL AS THE WEIGHT OF THE TEMPORARY CABLES TO BE ATTACHED TO IT.
- INSTALLATION IS TO BE PERFORMED BY QUALIFIED PERSONNEL IN ACCORDANCE WITH LOCAL AND NATIONAL CODES AND GOOD ENGINEERING PRACTICES.
- PANEL MUST BE LEVEL AND PLUMB TO ALLOW FOR PROPER DRAINAGE / WATER RUNOFF.

| AMPS | MATERIAL   |        | WEIGHT (lbs) |     | CAMLOCK QUANTITY |         |        | LUG QUANTITY |         |        | SIZE           |
|------|------------|--------|--------------|-----|------------------|---------|--------|--------------|---------|--------|----------------|
|      | ALUM.      | 316 SS | ALUM.        | SS  | PHASE            | NEUTRAL | GROUND | PHASE        | NEUTRAL | GROUND |                |
| 150A | 3P + G     |        | 150          | 190 | 2                | 0       | 1      | 3            | 0       | 1      | 250 TO 650 MCM |
|      | 3P + N + G | 1/8"   | 11 GA.       | 160 | 200              | 2       | 2      | 1            | 3       | 3      |                |

\* PHASE, NEUTRAL & GROUND LUGS ARE SINGLE HOLE MOUNT SINGLE BARREL LUGS.



BOTTOM VIEW WITHOUT ACCESS DOOR



ONE-LINE DIAGRAM

| CATALOG TYPE | CONNECTIONS | CONNECTOR TYPE | CATALOG NUMBER |                    |       |                 | AMPS        | VOLT CODE | BLANK       | OPTIONAL ACCESSORY | ENCLOSURE CODE | EXPLANATION OF CATALOG NUMBER CODES |                    |       |                           |                 |                   |   |  |        |             |   |
|--------------|-------------|----------------|----------------|--------------------|-------|-----------------|-------------|-----------|-------------|--------------------|----------------|-------------------------------------|--------------------|-------|---------------------------|-----------------|-------------------|---|--|--------|-------------|---|
|              |             |                | GROUND         | INPUT NEUTRAL TYPE | POLES | A=100%<br>N=25% |             |           |             |                    |                | COLOR                               | INPUT NEUTRAL TYPE |       | VOLTAGE CODES             |                 |                   | OPTIONAL ACCESSORY                        | ENCLOSURE CODES                        |        |             |   |
|              |             |                |                |                    |       |                 |             |           |             |                    |                |                                     | CODE               | COLOR | CODE                      | NOMINAL VOLTAGE | COLOR CODE        |   | CODE                                   | TYPE   | DESCRIPTION |   |
| 3QC          | D           | C              | A<br>N         | O<br>A             | 3     | 600             | F<br>N<br>R | 0         | 0<br>X<br>Z | F<br>S             | D=DUAL         | C=CAMLOCK                           | A=100%<br>N=25%    | GREEN | 0=NONE<br>A=100%<br>WHITE | F<br>N<br>R     | 240<br>480<br>600 | BLK,RED,BLU<br>BRN,ORG,YEL<br>BLK,BLK,BLK | 0=STANDARD<br>X=ACCESSORY<br>Z=SPECIAL | F<br>S | 3R<br>3R    | SECURE ENCLOSURE<br>OUTDOOR, RAINPROOF, SLEET & ICE RESISTANT<br>(ALUMINUM)<br><br>SECURE ENCLOSURE<br>OUTDOOR, RAINPROOF, SLEET & ICE RESISTANT<br>(316 STAINLESS STEEL) |

|                            |                  |   |                             |
|----------------------------|------------------|---|-----------------------------|
| PROJECT NAME:              |                  | 278882 MKA JPB 05/15/20   |                             |
| REV. TO SHEET              | ECN NO.          | BY  | DATE                        |
| QUICK CONNECT PANEL        |                  | THIRD ANGLE PROJECTION  |                             |
| 600 AMPS                   |                  | COMPUTER GENERATED DRAWING  |                             |
| 600V MAX, 3PH/3W OR 3PH/4W |                  | SCALE   | SIZE DS                     |
| DRAWN BY MKA               | DATE 05/15/20    | MANUFACTURING TOLERANCES TO BE IN ACCORDANCE WITH ASCO PROCEDURE MP-1-003. FOR PLASTIC PARTS SEE MP-1-035             | ASSEM. REF. NO.             |
| CHECKED                    | PROJECT APPROVAL | PROPERTY OF ASCO POWER TECHNOLOGIES. USE PERMITTED FOR OUR WORK ONLY. ALL RIGHTS OF DESIGN OR INVENTION ARE RESERVED. | DWG. NO. 1397483            |
| FINAL APPROVAL             | JPB 05/15/20     | ASCO® ASCO POWER TECHNOLOGIES, L.P. FLORHAM PARK, NEW JERSEY 07932 U.S.A.   | ECN NO. 278882 SHEET 1 OF 1 |