

Innovate with Small Panels, configured by Vijeo Designer

Magelis STO & Magelis STU

Graphic terminals with touch screen display



Vijeo Designer

Magelis STO & Magelis STU

A new generation of terminals

Schneider Electric's revamped Small Panels range, with its emphasis on technological innovation, is an essential lever in increasing your productivity. More open, more compact and offering greater communication capabilities, Magelis STO and STU panels are ideal for machine manufacturer solutions in industry and infrastructure, with their touch screens, clever mounting system and free software.



Economical

The design, ease of use and configuration with a single software program all contribute to making this range an innovative, economical and powerful offer.



Spring clips

"Pushbutton" mounting



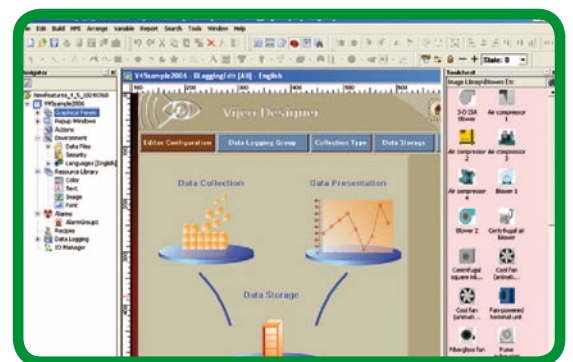
Simplified installation

No tools are required to install Magelis STO and STU panels. Being more compact, they can be mounted directly on the machine frame or in an enclosure. After spring clip technology, the 22 diameter "pushbutton" mounting system is a revolution which is both economical and effective.



Intuitive configuration

Small Panels are now configured with Vijeo Designer, the common software program for Schneider Electric's HMI's, offering you the full benefit of Vijeo Designer's advanced functions, such as Web Gate, recipes, downloads via USB memory stick and the graphic objects library.



Scalable user interface



High-performance communication

With the arrival of an embedded Ethernet connection, communication is now more open and faster with the Magelis STU. In addition, multiprotocol RS485/232 standard RJ45 ports, as well as USB ports (mini and standard version) make it easier to communicate with commercial available equipment, without extra cost.





Vijeo Designer



... from Small Panels
to industrial PCs

> Make the most of your energy

★ 100% certified

Conforming to international standards,
the Magelis STO & STU can be installed anywhere.



Schneider Electric Industries SAS

Head office
35, rue Joseph Monier - CS30323
F92505 Rueil-Malmaison Cedex
FRANCE

www.schneider-electric.com

ART. 837597

Due to evolution of standards and equipment, characteristics indicated in texts and images in this document are binding only after confirmation by our departments.

Publication: Schneider Electric
Design: pemaco
Printing:

01/2010

DIA5ED1091004EN