

FACILITY PLANNING DATA	
ELECTRICAL INPUT	1 PH, 100-120 VAC/200-240 VAC-50/60Hz
POWER CONNECTION TYPE	HARDWIRED
FULL LOAD AMPS(FLA)	16.5-13.8/8.0-6.7
MINIMUM CIRCUIT AMPACITY (MCA)	20.3/9.3
MAXIMUM OVERCURRENT PROTECTION (MOP)	25/15
FEATURES/OPTIONS	
FAN TYPE	ELECTRICALLY COMMUTATED
MAXIMUM AIRFLOW -l/s(CFM)	5437 m <sup>3</sup> /h (3200 CFM)
FAN CONTROL	VARIABLE SPEED
NUMBER OF FANS	8
HOT SWAPPABLE FANS	YES
HOT AISLE /RACK AISLE CONTAINMENT COMPATIBLE	YES
REFRIGERANT TYPE	R410A
NETWORK MANAGEMENT CARD	INCLUDED
STANDARD FILTER TYPE	0.5-in. WASHABLE
STANDARD FILTER EFFICIENCY	MERV 1
OPTIONAL FILTER TYPE	2-in. PLEATED
OPTIONAL FILTER EFFICIENCY	MERV 8
DRAINAGE SYSTEM	GRAVITY DRAIN/ CONDENSATE PUMP
NUMBER OF RACK INLET TEMP SENSORS	1
PIPING CONNECTIONS	TOP OR BOTTOM
ELECTRICAL CONNECTIONS	TOP OR BOTTOM
CABLE TYPE WATER DETECTOR	OPTIONAL
ELECTRICAL REHEAT	NO
HUMIDIFICATION	NO

- LIMIT WORKING CONDITIONS:**
- REFRIGERANT TYPE : R410A
  - VOLTAGE INPUT TOLERANCE : ±10%
  - APPROXIMATE MINIMUM RECOMMENDED LOAD : 8kW (27297 BTU/hr)
  - OUTDOOR AMBIENT TEMPERATURE WITHOUT THE LOW AMBIENT TEMPERATURE KIT INSTALLED:  
DOWN TO -15°C(+5°F) UP TO 48°(118°F).
  - OUTDOOR AMBIENT TEMPERATURE WITH THE LOW AMBIENT TEMPERATURE KIT INSTALLED:  
DOWN TO -40°C(-40°F) UP TO 48°(118°F).
  - AMBIENT %RH : 5 TO 80%RH
  - ALTITUDE : 3000 METERS (9843 FEET).

**NOTES:**

- INSTALLATION SHALL COMPLY WITH ALL APPLICABLE NATIONAL, STATE AND LOCAL ELECTRICAL STANDARDS.
- REFER TO PRODUCT DOCUMENTATION FOR ADDITIONAL DETAILS PRIOR TO INSTALLATION AND SITE PREPARATION WORK.
- ALL DIMENSIONS ARE IN MILLIMETERS [INCHES].
- △4. WHEN UNIT IS INSIDE THE ROW 900[36] REQUIRED FOR SERVICE ACCESS, WHEN OUTSIDE THE ROW 1200[48] REQUIRED FOR UNIT MOVEMENT. CHECK THE LOCAL AND NATIONAL CODES AND REGULATIONS FOR FURTHER SERVICE ACCESS REQUIREMENTS.
- △5. SUCTION PIPE SHOWN WITHOUT INSULATION IN THIS SHEET.
6. AVAILABLE PIPING CONFIGURATIONS: TOP OR BOTTOM.
7. NET WEIGHT OF UNIT IS 160 kg [352.7 lb].
- △8. THIS INFORMATION PROVIDES APPROXIMATE CENTER OF GRAVITY CALCULATION.

THIS DRAWING AND SPECIFICATIONS HEREIN ARE THE PROPERTY OF SCHNEIDER ELECTRIC AND SHALL NOT BE COPIED, REPRODUCED OR USED IN WHOLE OR IN PART, AS THE BASIS FOR THE MANUFACTURE OR SALE OF ITEMS WITHOUT WRITTEN PERMISSION FROM SCHNEIDER ELECTRIC. THIS DRAWING IS BASED UPON LATEST AVAILABLE INFORMATION AND IS SUBJECT TO CHANGE WITHOUT NOTICE.



TITLE: InRow DIRECT EXPANSION  
 InRow RD 300mm 30kW Indoor Unit  
 DUAL FEED -120-230V, Standard, CE/UL  
 GENERAL ARRANGEMENT

DWG NO: ACRD301S

REV: 0

DRAWN: BALA 23-OCT-20

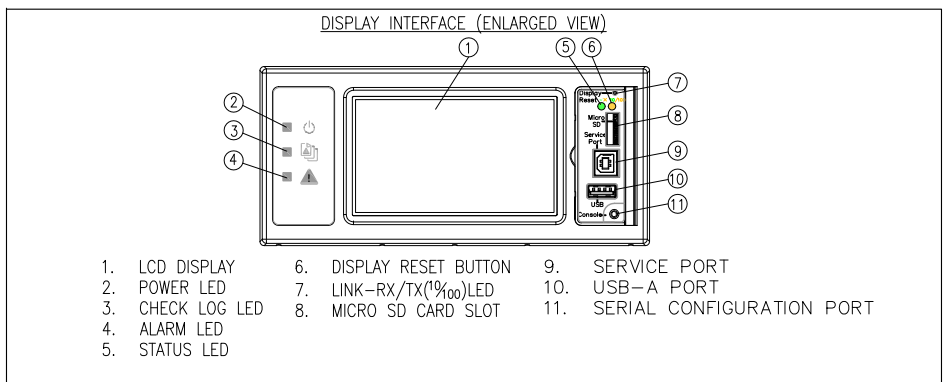
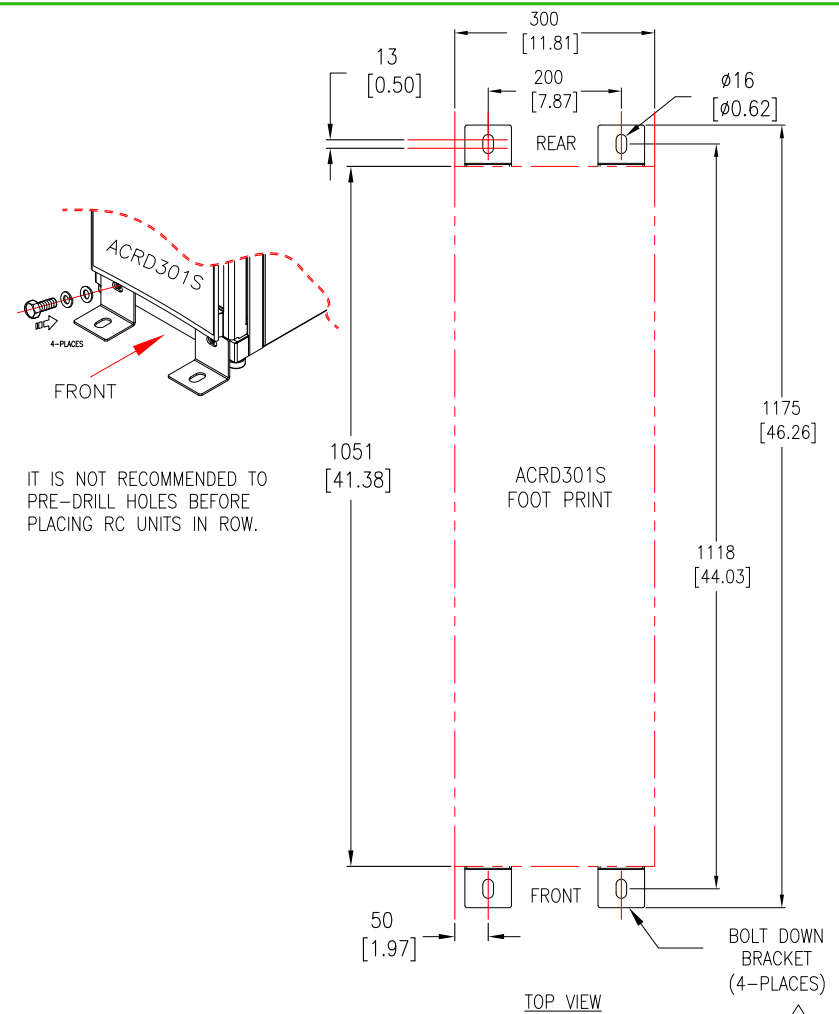
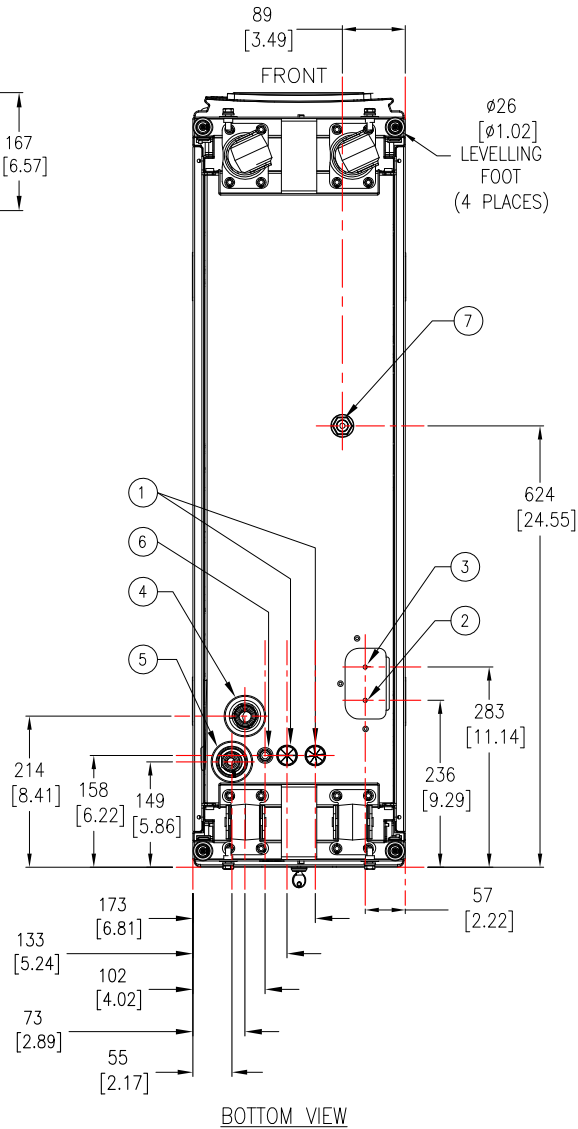
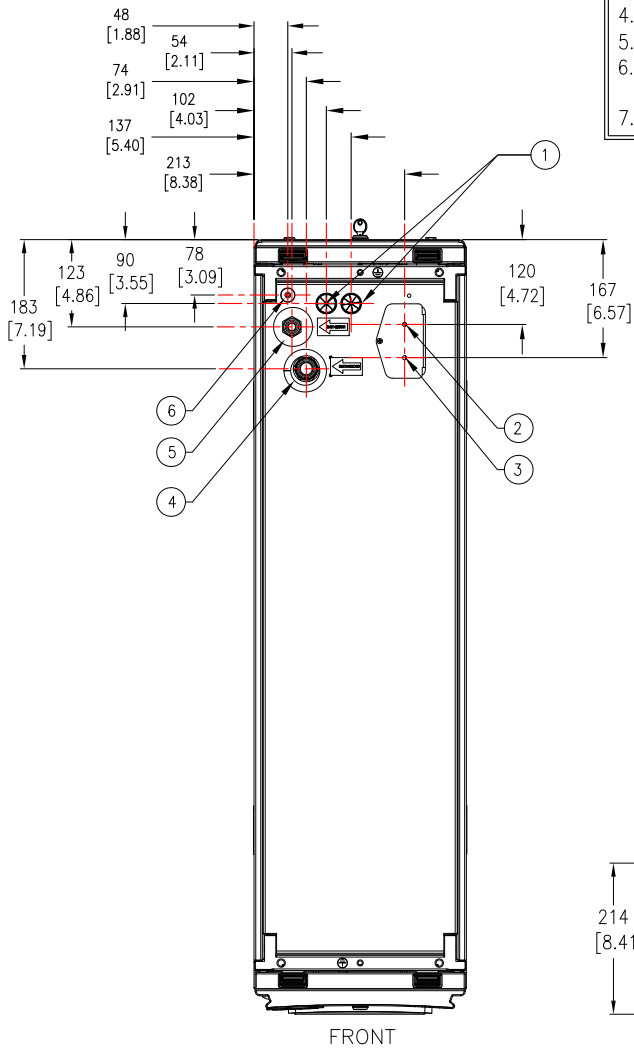
ENGINEER: RAAM C/K CHENG 23-OCT-20

APPROVED: RAAM C/K CHENG 23-OCT-20

PROJECT: SUBMITTAL DRAWINGS SHEET 1 OF 6

FIRST ANGLE PROJECTION

1. LOW VOLTAGE INPUT WIRING INLETS
2. POWER SUPPLY 1 INLET
3. POWER SUPPLY 2 INLET
4. SUCTION LINE CONNECTION- 1 1/4 INCH (12 UNF)
5. LIQUID LINE CONNECTION- 1 INCH (14 UNS)
6. CONDENSATE DRAIN LINE OUTLET CONNECTION  
4.77mm[3/16 INCH] ID, 6.35mm[1/4 INCH] OD
7. GRAVITY DRAIN CONNECTION



**NOTES:**

1. INSTALLATION SHALL COMPLY WITH ALL APPLICABLE NATIONAL, STATE AND LOCAL ELECTRICAL STANDARDS.
2. REFER TO PRODUCT DOCUMENTATION FOR ADDITIONAL DETAILS PRIOR TO INSTALLATION AND SITE PREPARATION WORK.
3. ALL DIMENSIONS ARE IN MILLIMETERS [INCHES].
- △4. BOLT-DOWN KIT (SKU#AR7701) IS OPTIONAL AND HAS TO BE ORDERED SEPARATELY.

THIS DRAWING AND SPECIFICATIONS HEREIN ARE THE PROPERTY OF SCHNEIDER ELECTRIC AND SHALL NOT BE COPIED, REPRODUCED OR USED IN WHOLE OR IN PART, AS THE BASIS FOR THE MANUFACTURE OR SALE OF ITEMS WITHOUT WRITTEN PERMISSION FROM SCHNEIDER ELECTRIC. THIS DRAWING IS BASED UPON LATEST AVAILABLE INFORMATION AND IS SUBJECT TO CHANGE WITHOUT NOTICE.

**Schneider Electric**

TITLE: InRow DIRECT EXPANSION  
InRow RD 300mm 30kW Indoor Unit  
DUAL FEED -120-230V, Standard, CE/UL  
TOP-BOTTOM VIEWS AND ANCHORING DETAILS

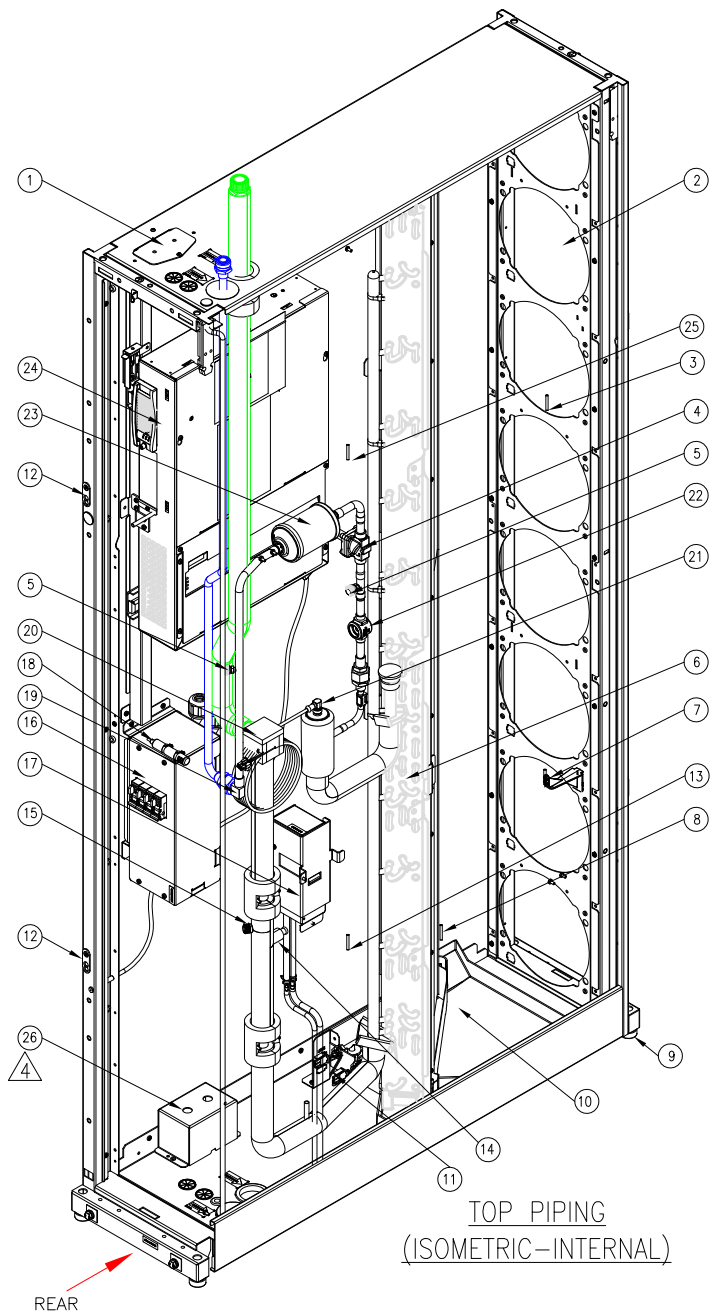
PROJECT: SUBMITTAL DRAWINGS SHEET 2 OF 6

DWG NO: ACRD301S

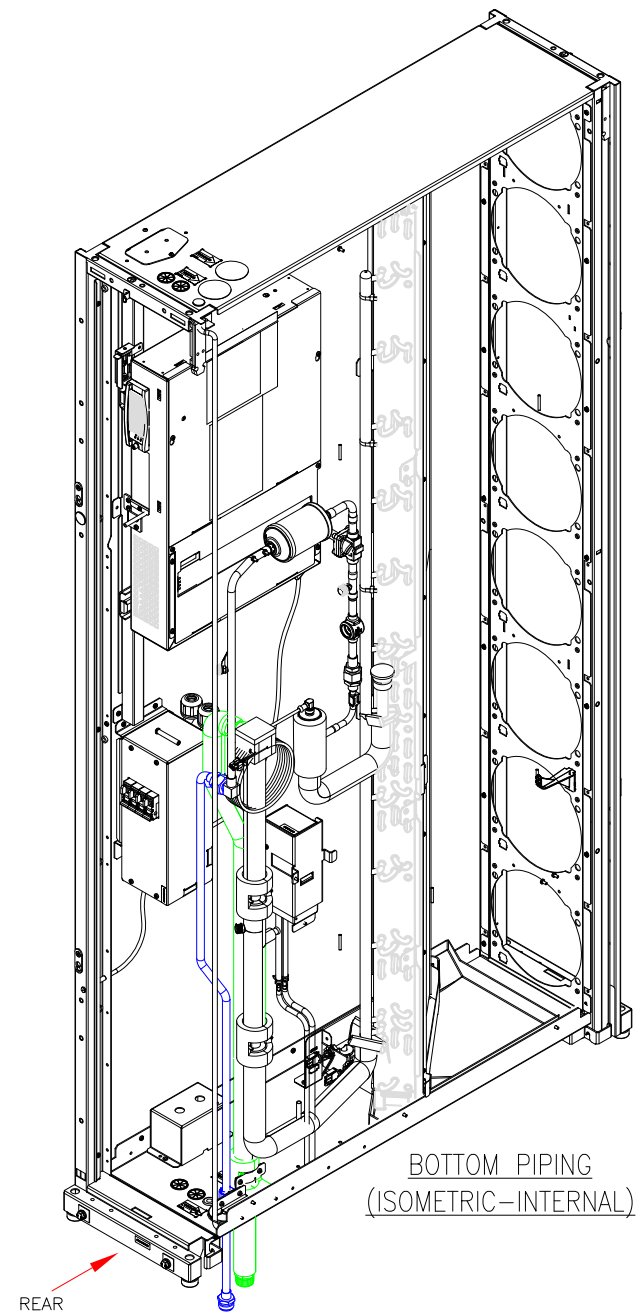
REV: 0

DRAWN: BALA	27-OCT-20
ENGINEER: RAAM C/K CHENG	27-OCT-20
APPROVED: RAAM C/K CHENG	27-OCT-20

FIRST ANGLE PROJECTION



1. POWER SUPPLY CONNECTIONS (TOP)
  2. FAN LOCATION (TYPICAL)
  3. UPPER SUPPLY AIR TEMPERATURE SENSOR
  4. SOLENOID VALVE
  5. LIQUID LINE SERVICE PORT
  6. COOLING COIL
  7. LOWER SUPPLY AIR TEMPERATURE
  8. REFRIGERANT TEMPERATURE SENSOR
  9. LEVELING FEET
  10. CONDENSATE DRAIN PAN
  11. DRAIN PAN FLOAT SWITCH
  12. JOINING BRACKET
  13. LOWER RETURN AIR TEMPERATURE SENSOR
  14. TEMPERATURE SENSOR (SUCTION)
  15. GAS LINE SERVICE PORT
  16. AUTOMATIC TRANSFER SWITCH (ATS)
  17. CONDENSATE DRAIN PUMP
  18. TEMPERATURE AND HUMIDITY SENSOR(OPTIONAL)
  19. INLET CONNECTION
  20. OUTLET CONNECTION
  21. ELECTRONIC EXPANSION VALVE (EEV)
  22. SIGHT GLASS
  23. FILTER DRIER
  24. ELECTRICAL BOX
  25. UPPER RETURN AIR TEMPERATURE SENSOR
  26. CONDUIT BOX LOCATION (BOTTOM ENTRY)
- SUCTION LINE (WITH INSULATION)     
 LIQUID LINE



**NOTES:**

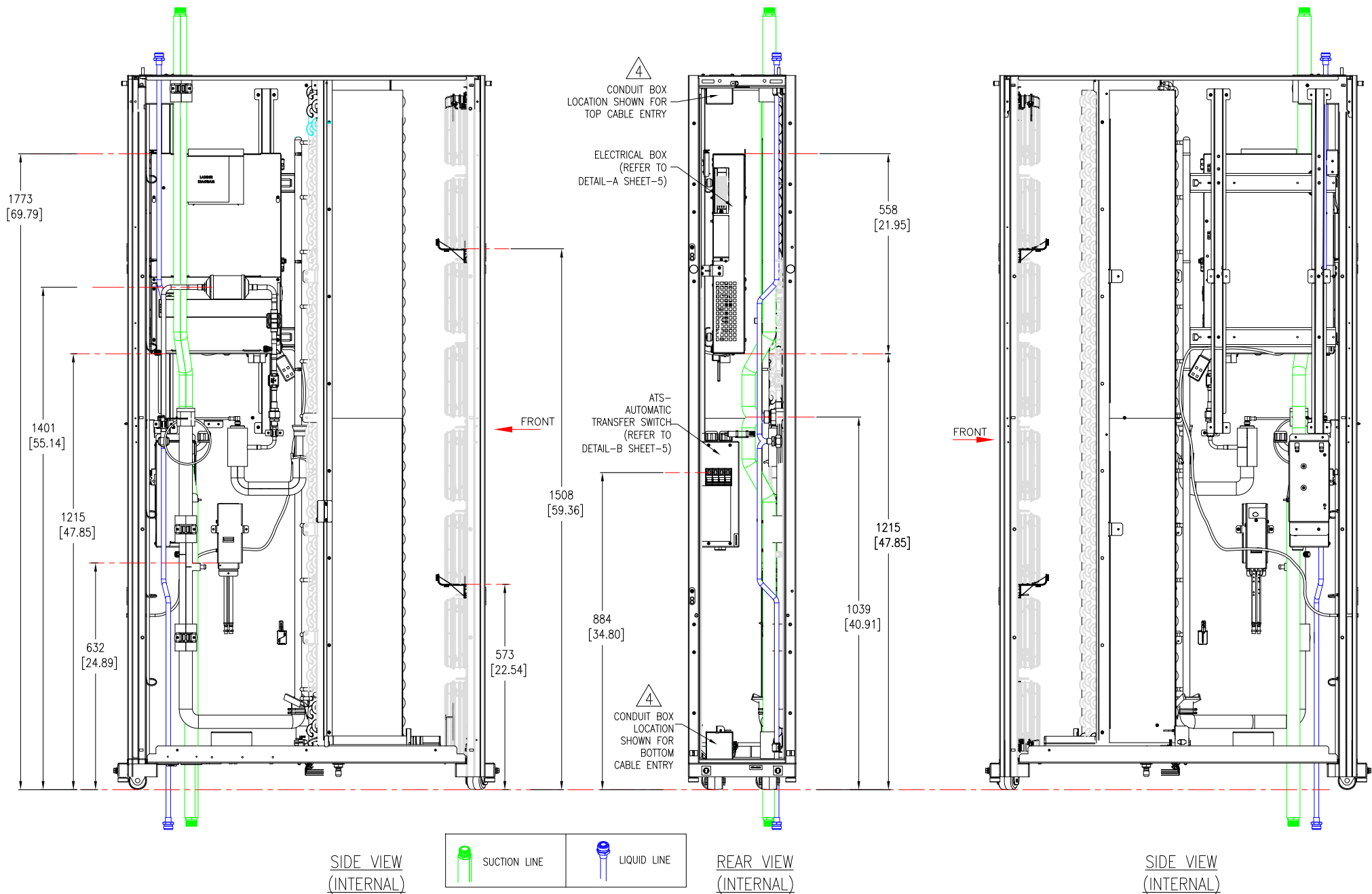
1. INSTALLATION SHALL COMPLY WITH ALL APPLICABLE NATIONAL, STATE AND LOCAL ELECTRICAL STANDARDS.
2. REFER TO PRODUCT DOCUMENTATION FOR ADDITIONAL DETAILS PRIOR TO INSTALLATION AND SITE PREPARATION WORK.
3. ALL DIMENSIONS ARE IN MILLIMETERS [INCHES].
- △4. CONDUIT BOX A QUANTITY OF 1 ONLY SUPPLIED INSIDE THE UNIT, CAN BE MOUNTED IN LOCATIONS AS SHOWN BASED ON TOP OR BOTTOM ENTRY APPLICATION. REFER TO INSTALLATION MANUAL FOR DETAILS.
5. SOME STRUCTURAL DETAILS BEEN OMITTED FOR THE PURPOSE OF CLARITY.

THIS DRAWING AND SPECIFICATIONS HEREIN ARE THE PROPERTY OF SCHNEIDER ELECTRIC AND SHALL NOT BE COPIED, REPRODUCED OR USED IN WHOLE OR IN PART, AS THE BASIS FOR THE MANUFACTURE OR SALE OF ITEMS WITHOUT WRITTEN PERMISSION FROM SCHNEIDER ELECTRIC. THIS DRAWING IS BASED UPON LATEST AVAILABLE INFORMATION AND IS SUBJECT TO CHANGE WITHOUT NOTICE.



TITLE: InRow DIRECT EXPANSION  
InRow RD 300mm 30kW Indoor Unit  
DUAL FEED -120-230V, Standard, CE/UL  
INTERNAL ISOMETRIC VIEWS

DWG NO:	ACRD301S		REV:	1
DRAWN:	BALA	10-NOV-20	FIRST ANGLE PROJECTION	
ENGINEER:	RAAM C/K CHENG	10-NOV-20		
APPROVED:	RAAM C/K CHENG	10-NOV-20		



NOTES:

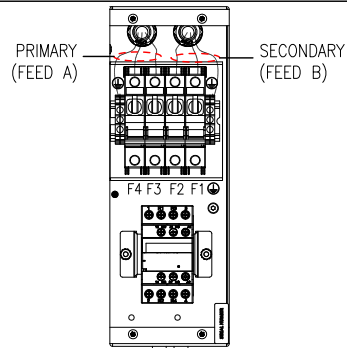
1. INSTALLATION SHALL COMPLY WITH ALL APPLICABLE NATIONAL, STATE AND LOCAL ELECTRICAL STANDARDS.
2. REFER TO PRODUCT DOCUMENTATION FOR ADDITIONAL DETAILS PRIOR TO INSTALLATION AND SITE PREPARATION WORK.
3. ALL DIMENSIONS ARE IN MILLIMETERS [INCHES].
- △4. CONDUIT BOX A QUANTITY OF 1 ONLY SUPPLIED INSIDE THE UNIT, CAN BE MOUNTED IN LOCATIONS AS SHOWN BASED ON TOP OR BOTTOM ENTRY APPLICATION.
5. SUCTION PIPE SHOWN WITH INSULATION IN THIS SHEET.
6. SOME STRUCTURAL DETAILS BEEN OMITTED FOR THE PURPOSE OF CLARITY.

THIS DRAWING AND SPECIFICATIONS HEREIN ARE THE PROPERTY OF SCHNEIDER ELECTRIC AND SHALL NOT BE COPIED, REPRODUCED OR USED IN WHOLE OR IN PART, AS THE BASIS FOR THE MANUFACTURE OR SALE OF ITEMS WITHOUT WRITTEN PERMISSION FROM SCHNEIDER ELECTRIC. THIS DRAWING IS BASED UPON LATEST AVAILABLE INFORMATION AND IS SUBJECT TO CHANGE WITHOUT NOTICE.



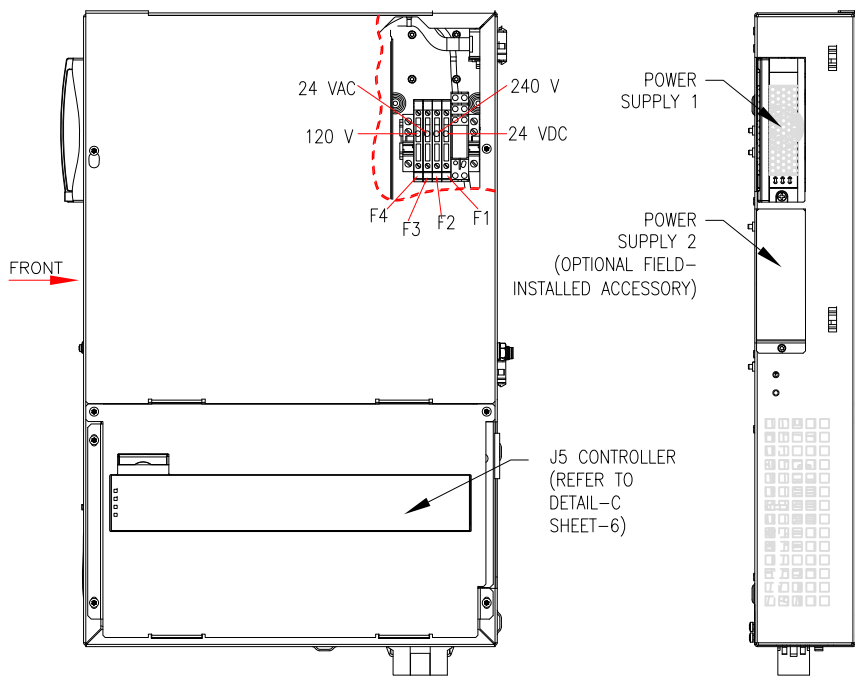
TITLE: InRow DIRECT EXPANSION InRow RD 300mm 30kW Indoor Unit DUAL FEED -120-230V, Standard, CE/UL INTERNAL VIEWS	DWG NO: ACRD301S	REV: 0
PROJECT: SUBMITTAL DRAWINGS	DRAWN: BALA	29-SEP-20
SHEET 4 OF 6	ENGINEER: RAAM C/K CHENG	15-OCT-20
	APPROVED: RAAM C/K CHENG	15-OCT-20
		FIRST ANGLE PROJECTION

DETAIL-B (ATS-AUTOMATIC TRANSFER SWITCH)



FRONT VIEW

DETAIL-A (ELECTRICAL BOX)



SIDE VIEW

FRONT VIEW

- NOTE:-
- 200-240V : CONFIGURE THE WIRE LABELED F2-1 TO THE 240-V FUSE.
  - 100-120V : CONFIGURE THE WIRE LABELED F2-1 TO THE 120-V FUSE.
  - REFER THE LADDER DIAGRAM INCLUDED WITH THE UNIT FOR MORE INFORMATION.

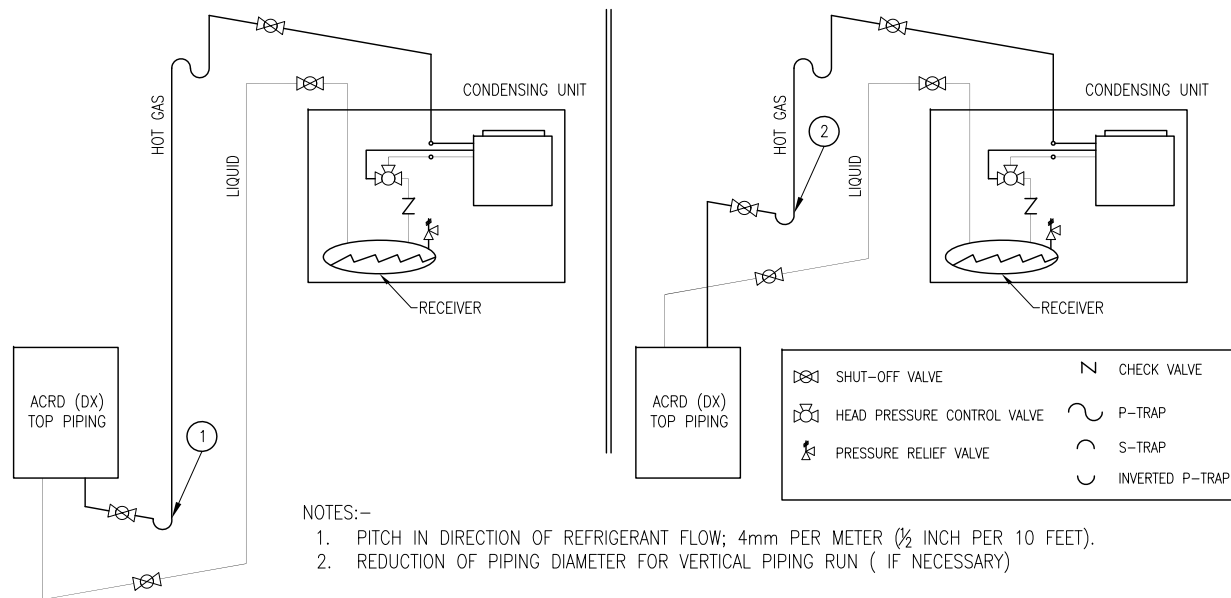
COMMON NOTES:

- INSTALLATION SHALL COMPLY WITH ALL APPLICABLE NATIONAL, STATE AND LOCAL ELECTRICAL STANDARDS.
- REFER TO PRODUCT DOCUMENTATION FOR ADDITIONAL DETAILS PRIOR TO INSTALLATION AND SITE PREPARATION WORK.
- SOME STRUCTURAL DETAILS BEEN OMITTED FOR THE PURPOSE OF CLARITY.

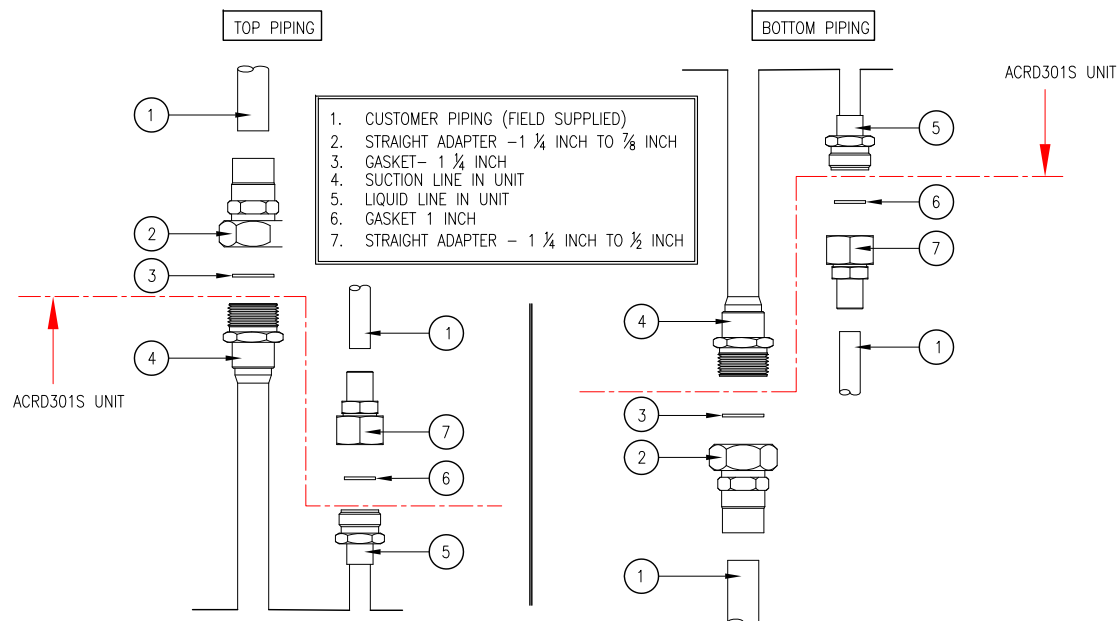
BOTTOM PIPING

REFRIGERATION PIPING DIAGRAM

TOP PIPING



CUSTOMER PIPING CONNECTIONS



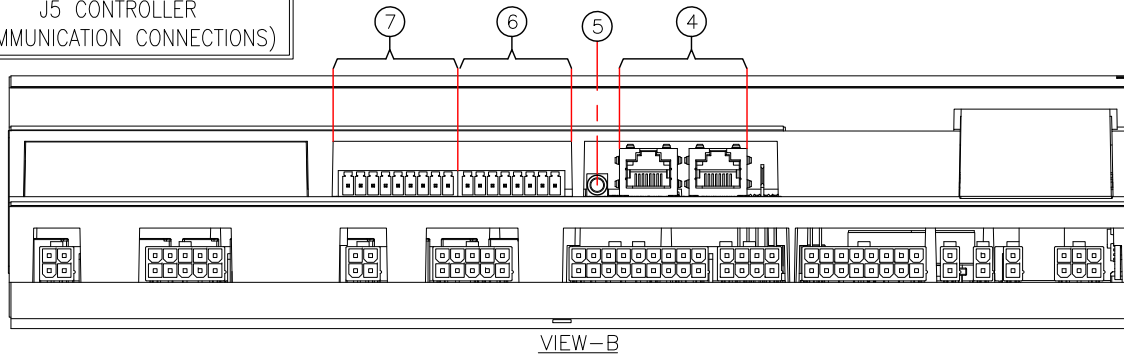
THIS DRAWING AND SPECIFICATIONS HEREIN ARE THE PROPERTY OF SCHNEIDER ELECTRIC AND SHALL NOT BE COPIED, REPRODUCED OR USED IN WHOLE OR IN PART, AS THE BASIS FOR THE MANUFACTURE OR SALE OF ITEMS WITHOUT WRITTEN PERMISSION FROM SCHNEIDER ELECTRIC. THIS DRAWING IS BASED UPON LATEST AVAILABLE INFORMATION AND IS SUBJECT TO CHANGE WITHOUT NOTICE.



TITLE: InRow DIRECT EXPANSION InRow RD 300mm 30kW Indoor Unit DUAL FEED -120-230V, Standard, CE/UL INTERNAL DETAILS AND REFRIGERATION PIPING DIAGRAM

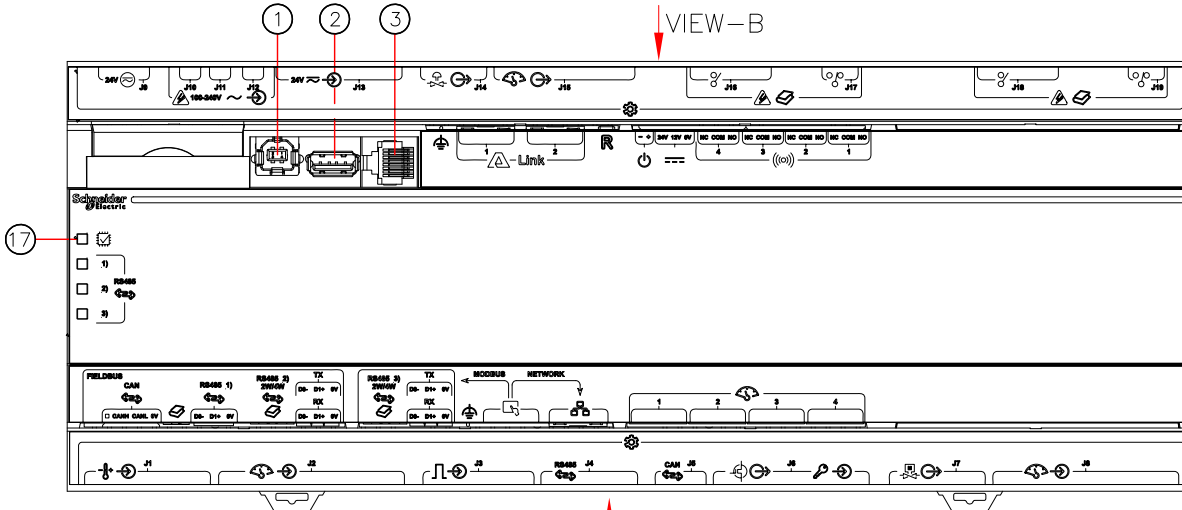
DWG NO:	ACRD301S		REV:	0
DRAWN:	BALA	29-SEP-20	FIRST	ANGLE
ENGINEER:	RAAM C/K CHENG	15-OCT-20	PROJECTION	
APPROVED:	RAAM C/K CHENG	15-OCT-20		

J5 CONTROLLER  
(COMMUNICATION CONNECTIONS)

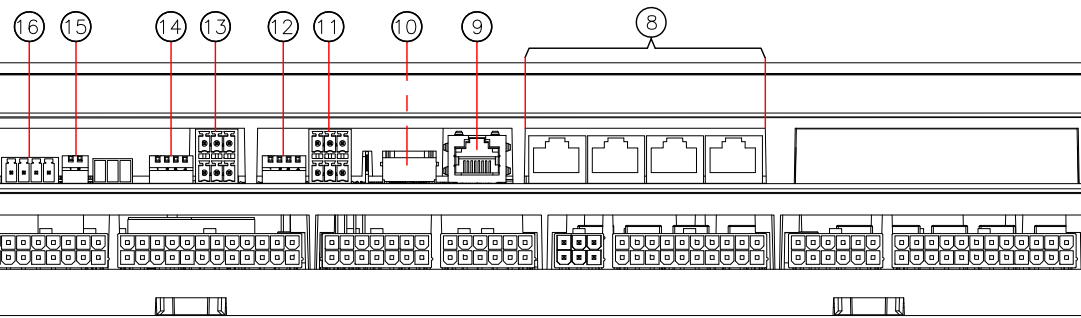


VIEW-B

VIEW-B

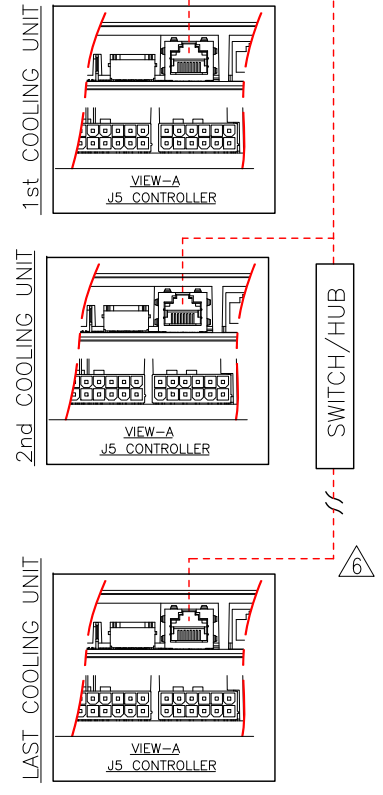


VIEW-A



VIEW-A

J5 CONTROLLER  
(NETWORK CONNECTIONS)



NOTES:

1. INSTALLATION SHALL COMPLY WITH ALL APPLICABLE NATIONAL, STATE AND LOCAL ELECTRICAL STANDARDS.
2. REFER TO PRODUCT DOCUMENTATION FOR ADDITIONAL DETAILS PRIOR TO INSTALLATION AND SITE PREPARATION WORK.
3. FOR OUTPUT RELAY DETAILS, MODBUS SWITCH CONFIGURATIONS AND STANDBY INPUTS DETAILS, REFER TO INSTALLATION MANUAL.
4. THE A-LINK BUS CONNECTION ALLOWS A MAXIMUM GROUP OF 20 UNIFLAIR InRow ACRD301S UNITS.
5. TO ENABLE UNITS TO FUNCTION AS A GROUP, LINK THEM TOGETHER USING A STANDARD PIN-OUT CAT-5 CABLE WITH RJ-45 CONNECTORS. THE A-LINK BUS MUST BE TERMINATED AT THE 1st AND LAST UNIT INSTALLED IN THE GROUP. AN A-LINK TERMINATOR IS SUPPLIED WITH EACH UNIT.
- △ 6. THE MAXIMUM WIRE LENGTH FOR THE ENTIRE GROUP MUST NOT EXCEED 500 METERS (1640 FEET).
7. ALL INPUT AND OUTPUT CONNECTIONS SHOULD BE WIRED AS CLASS 2 CIRCUITS.

1. USB DEVICE PORT
2. USB HOST PORT
3. SERIAL PORT
4. A-LINK PORTS
5. RESET BUTTON
6. OUTPUT RELAY 4/STANDBY INPUT
7. OUTPUT RELAY 1-3
8. UNIVERSAL SENSOR PARTS
9. NETWORK CONNECTION
10. TOUCH SCREEN DISPLAY CONNECTION
11. MODBUS CONNECTION
12. MODBUS CONFIGURATION SWITCHES
13. FIELDBUS MODBUS CONNECTION
14. FIELDBUS MODBUS CONFIGURATION SWITCHES
15. FIELDBUS CANBus CONFIGURATION SWITCHES
16. FIELDBUS CANBus CONNECTION
17. PROCESSOR STATUS LED

THIS DRAWING AND SPECIFICATIONS HEREIN ARE THE PROPERTY OF SCHNEIDER ELECTRIC AND SHALL NOT BE COPIED, REPRODUCED OR USED IN WHOLE OR IN PART, AS THE BASIS FOR THE MANUFACTURE OR SALE OF ITEMS WITHOUT WRITTEN PERMISSION FROM SCHNEIDER ELECTRIC. THIS DRAWING IS BASED UPON LATEST AVAILABLE INFORMATION AND IS SUBJECT TO CHANGE WITHOUT NOTICE.



TITLE: InRow DIRECT EXPANSION  
InRow RD 300mm 30kW Indoor Unit  
DUAL FEED -120-230V, Standard, CE/UL  
COMMUNICATION DETAILS

DWG NO: ACRD301S

REV: 0

DRAWN: BALA 29-SEP-20

FIRST ANGLE PROJECTION

ENGINEER: RAAM C/K CHENG 15-OCT-20

APPROVED: RAAM C/K CHENG 15-OCT-20