

FACILITY PLANNING DATA	
ELECTRICAL INPUT	1 PH, 200-240 VAC 50/60Hz
POWER CONNECTION TYPE	HARDWIRED
FULL LOAD AMPS(FLA)	28.5
MINIMUM CIRCUIT AMPACITY (MCA)	41.75
MAXIMUM OVERCURRENT PROTECTION (MOP)	45
FEATURES/OPTIONS	
FAN TYPE	ELECTRICALLY COMMUTATED
MAXIMUM AIRFLOW -I/s(CFM)	5437 m ³ /h (3200 CFM)
FAN CONTROL	VARIABLE SPEED
NUMBER OF FANS	8
HOT SWAPPABLE FANS	YES
HOT AISLE /RACK AISLE CONTAINMENT COMPATIBLE	YES
REFRIGERANT TYPE	R410A
NETWORK MANAGEMENT CARD	INCLUDED
STANDARD FILTER TYPE	0.5-in. WASHABLE
STANDARD FILTER EFFICIENCY	MERV 1
OPTIONAL FILTER TYPE	2-in. PLEATED
OPTIONAL FILTER EFFICIENCY	MERV 8
DRAINAGE SYSTEM	GRAVITY DRAIN/ CONDENSATE PUMP
NUMBER OF RACK INLET TEMP SENSORS	1
PIPING CONNECTIONS	TOP OR BOTTOM
ELECTRICAL CONNECTIONS	TOP OR BOTTOM
CABLE TYPE WATER DETECTOR	OPTIONAL
ELECTRICAL REHEAT	YES
HUMIDIFICATION	YES

- LIMIT WORKING CONDITIONS:**
- REFRIGERANT TYPE : R410A
 - VOLTAGE INPUT TOLERANCE : ±10%
 - APPROXIMATE MINIMUM RECOMMENDED LOAD : 8kW (27297 BTU/hr)
 - OUTDOOR AMBIENT TEMPERATURE WITHOUT THE LOW AMBIENT TEMPERATURE KIT INSTALLED:
DOWN TO -15°C(+5°F) UP TO 48°(118°F).
 - OUTDOOR AMBIENT TEMPERATURE WITH THE LOW AMBIENT TEMPERATURE KIT INSTALLED:
DOWN TO -40°C(-40°F) UP TO 48°(118°F).
 - AMBIENT %RH : 5 TO 80%RH
 - ALTITUDE : 3000 METERS (9843 FEET).

NOTES:

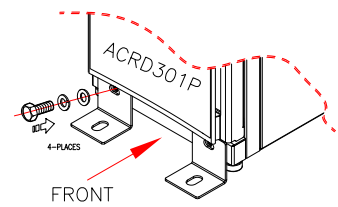
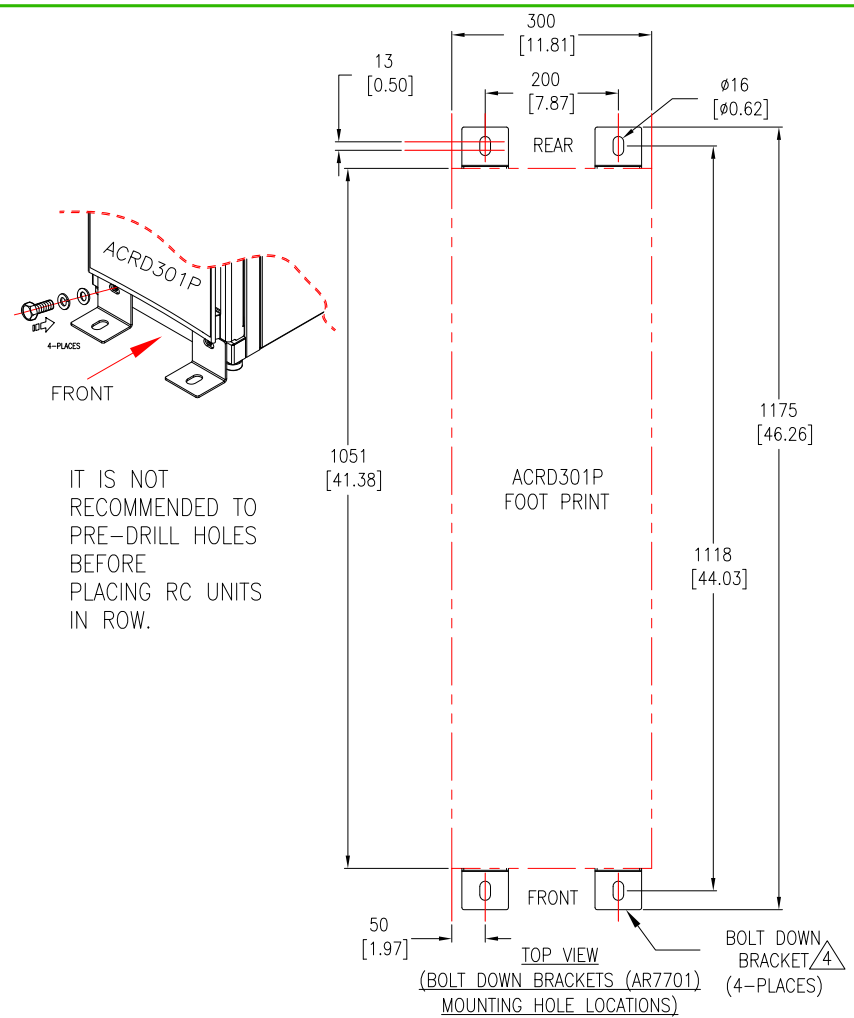
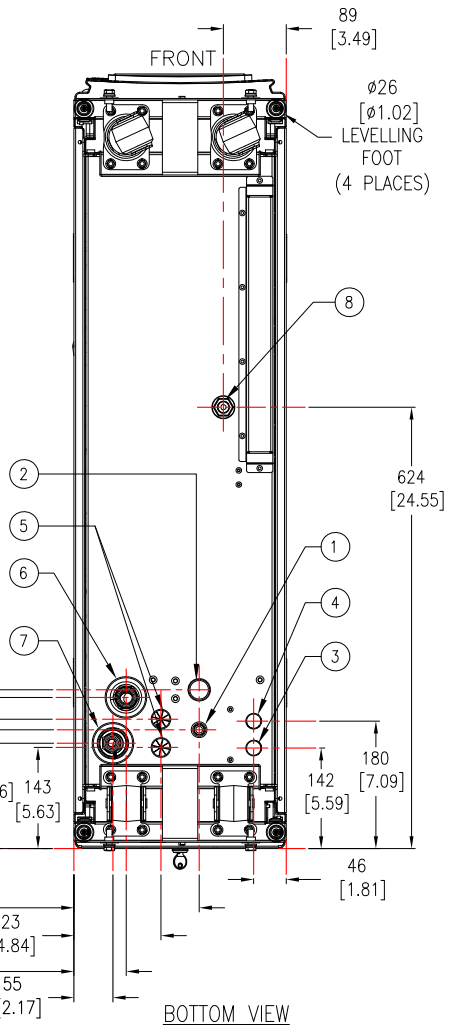
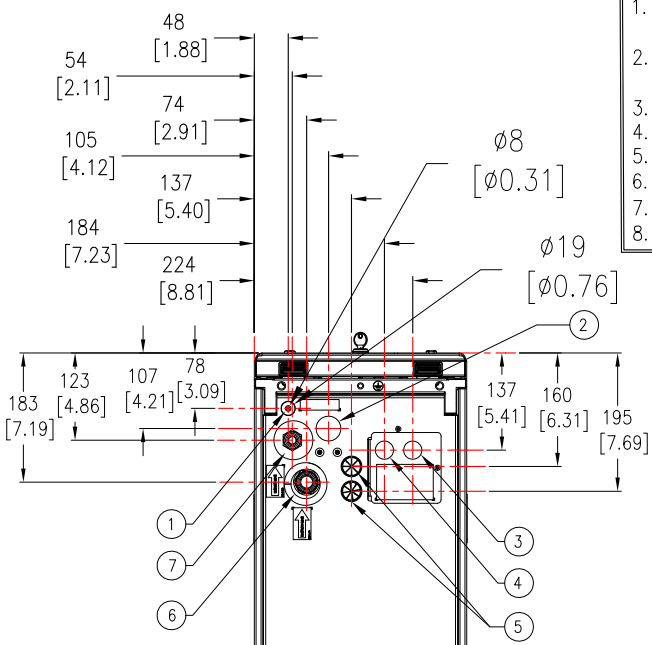
- INSTALLATION SHALL COMPLY WITH ALL APPLICABLE NATIONAL, STATE AND LOCAL ELECTRICAL STANDARDS.
- REFER TO PRODUCT DOCUMENTATION FOR ADDITIONAL DETAILS PRIOR TO INSTALLATION AND SITE PREPARATION WORK.
- ALL DIMENSIONS ARE IN MILLIMETERS [INCHES].
- △4. WHEN UNIT IS INSIDE THE ROW 900[36] REQUIRED FOR SERVICE ACCESS, WHEN OUTSIDE THE ROW 1200[48] REQUIRED FOR UNIT MOVEMENT. CHECK THE LOCAL AND NATIONAL CODES AND REGULATIONS FOR FURTHER SERVICE ACCESS REQUIREMENTS.
- △5. SUCTION PIPE SHOWN WITHOUT INSULATION IN THIS SHEET.
- AVAILABLE PIPING CONFIGURATIONS: TOP OR BOTTOM.
- NET WEIGHT OF UNIT IS 173.5 kg [382.5 lb].
- △8. THIS INFORMATION PROVIDES APPROXIMATE CENTER OF GRAVITY CALCULATION.

THIS DRAWING AND SPECIFICATIONS HEREIN ARE THE PROPERTY OF SCHNEIDER ELECTRIC AND SHALL NOT BE COPIED, REPRODUCED OR USED IN WHOLE OR IN PART, AS THE BASIS FOR THE MANUFACTURE OR SALE OF ITEMS WITHOUT WRITTEN PERMISSION FROM SCHNEIDER ELECTRIC. THIS DRAWING IS BASED UPON LATEST AVAILABLE INFORMATION AND IS SUBJECT TO CHANGE WITHOUT NOTICE.

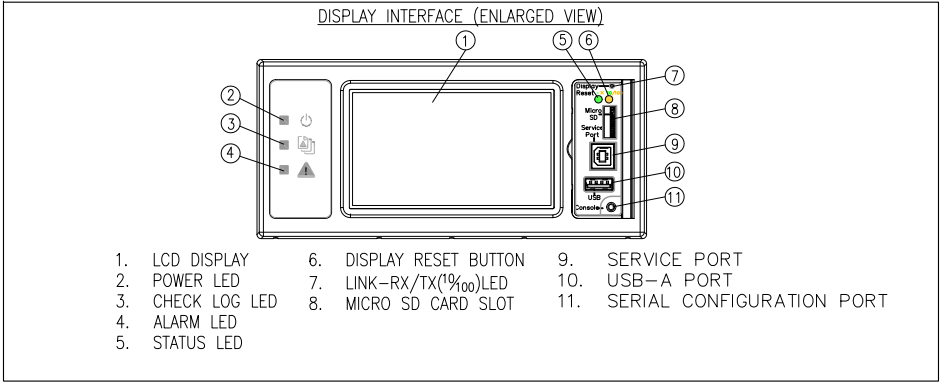


TITLE: InRow DIRECT EXPANSION InRow RD 300mm 30kW Indoor Unit DUAL FEED 208-230V, w/HUMIDIFIER & REHEAT CE/UL GENERAL ARRANGEMENT	DWG NO: ACRD301P	REV: 0
PROJECT: SUBMITTAL DRAWINGS	DRAWN: BALA	23-OCT-20
SHEET 1 OF 6	ENGINEER: RAAM C/K CHENG	23-OCT-20
	APPROVED: RAAM C/K CHENG	23-OCT-20

1. CONDENSATE DRAIN LINE OUTLET CONNECTION
4.77mm[3/16 INCH] ID, 6.35mm[1/4 INCH] OD
2. HUMIDIFIER WATER SUPPLY INLET CONNECTION
(¼ INCH NPT OR ¼ INCH BSPT)
3. POWER SUPPLY 1 INLET
4. POWER SUPPLY 2 INLET
5. LOW VOLTAGE INPUT WIRING INLETS
6. SUCTION LINE CONNECTION- 1 1/4 INCH (12 UNF)
7. LIQUID LINE CONNECTION- 1 INCH (14 UNS)
8. GRAVITY DRAIN CONNECTION



IT IS NOT RECOMMENDED TO PRE-DRILL HOLES BEFORE PLACING RC UNITS IN ROW.

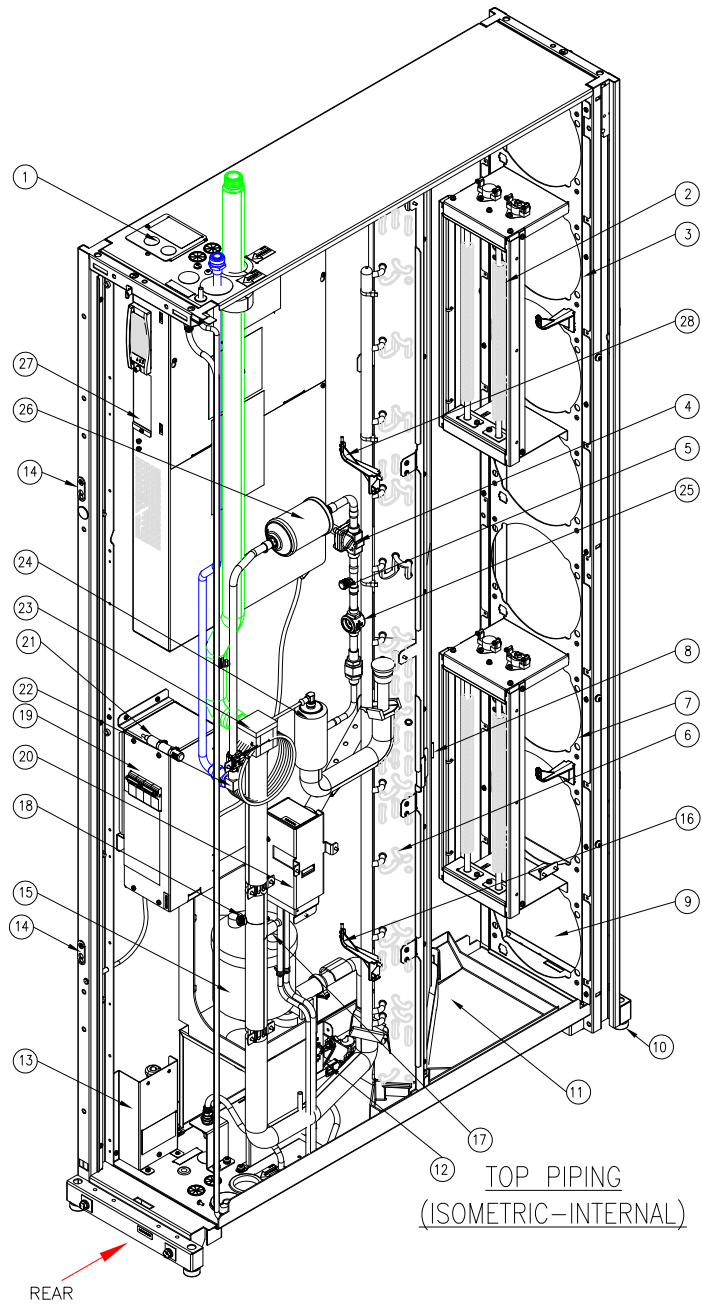


- NOTES:
1. INSTALLATION SHALL COMPLY WITH ALL APPLICABLE NATIONAL, STATE AND LOCAL ELECTRICAL STANDARDS.
 2. REFER TO PRODUCT DOCUMENTATION FOR ADDITIONAL DETAILS PRIOR TO INSTALLATION AND SITE PREPARATION WORK.
 3. ALL DIMENSIONS ARE IN MILLIMETERS [INCHES].
 - △4. BOLT-DOWN KIT (SKU#AR7701) IS OPTIONAL AND HAS TO BE ORDERED SEPARATELY.

THIS DRAWING AND SPECIFICATIONS HEREIN ARE THE PROPERTY OF SCHNEIDER ELECTRIC AND SHALL NOT BE COPIED, REPRODUCED OR USED IN WHOLE OR IN PART, AS THE BASIS FOR THE MANUFACTURE OR SALE OF ITEMS WITHOUT WRITTEN PERMISSION FROM SCHNEIDER ELECTRIC. THIS DRAWING IS BASED UPON LATEST AVAILABLE INFORMATION AND IS SUBJECT TO CHANGE WITHOUT NOTICE.

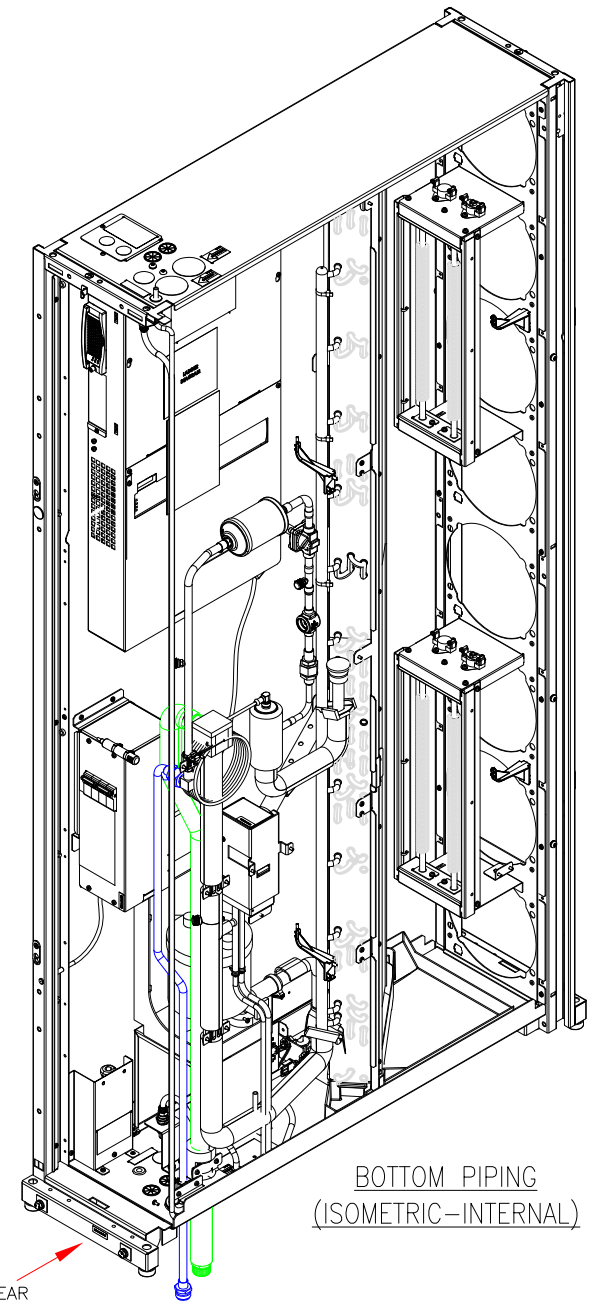
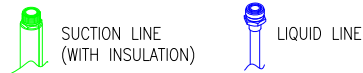


TITLE: InRow DIRECT EXPANSION InRow RD 300mm 30kW Indoor Unit DUAL FEED 208-230V, w/HUMIDIFIER & REHEAT CE/UL TOP-BOTTOM VIEWS AND ANCHORING DETAILS	DWG NO: ACRD301P	REV: 0
PROJECT: SUBMITTAL DRAWINGS SHEET 2 OF 6	DRAWN: BALA	27-OCT-20
	ENGINEER: RAAM C/K CHENG	27-OCT-20
	APPROVED: RAAM C/K CHENG	27-OCT-20
		FIRST ANGLE PROJECTION



TOP PIPING
(ISOMETRIC-INTERNAL)

1. POWER SUPPLY CONNECTIONS (TOP)
2. ELECTRIC HEATERS
3. UPPER SUPPLY AIR TEMPERATURE SENSOR (ATTACHED TO FAN GRILLE)
4. SOLENOID VALVE
5. LIQUID LINE SERVICE PORT
6. COOLING COIL
7. LOWER SUPPLY AIR TEMPERATURE (ATTACHED TO FAN GRILLE)
8. REFRIGERANT TEMPERATURE SENSOR
9. FAN LOCATION (TYPICAL)
10. LEVELING FEET
11. CONDENSATE DRAIN PAN
12. DRAIN PAN FLOAT SWITCH
13. POWER SUPPLY CONNECTION (LOWER)
14. JOINING BRACKET
15. HUMIDIFIER
16. LOWER RETURN AIR TEMPERATURE SENSOR
17. TEMPERATURE SENSOR (SUCTION)
18. GAS LINE SERVICE PORT
19. AUTOMATIC TRANSFER SWITCH (ATS)
20. CONDENSATE DRAIN PUMP
21. TEMPERATURE AND HUMIDITY SENSOR
22. INLET CONNECTION
23. OUTLET CONNECTION
24. ELECTRONIC EXPANSION VALVE (EEV)
25. SIGHT GLASS
26. FILTER DRIER
27. ELECTRICAL BOX
28. UPPER RETURN AIR TEMPERATURE SENSOR



BOTTOM PIPING
(ISOMETRIC-INTERNAL)

NOTES:

1. INSTALLATION SHALL COMPLY WITH ALL APPLICABLE NATIONAL, STATE AND LOCAL ELECTRICAL STANDARDS.
2. REFER TO PRODUCT DOCUMENTATION FOR ADDITIONAL DETAILS PRIOR TO INSTALLATION AND SITE PREPARATION WORK.
3. ALL DIMENSIONS ARE IN MILLIMETERS [INCHES].
4. SOME STRUCTURAL DETAILS BEEN OMITTED FOR THE PURPOSE OF CLARITY.

THIS DRAWING AND SPECIFICATIONS HEREIN ARE THE PROPERTY OF SCHNEIDER ELECTRIC AND SHALL NOT BE COPIED, REPRODUCED OR USED IN WHOLE OR IN PART, AS THE BASIS FOR THE MANUFACTURE OR SALE OF ITEMS WITHOUT WRITTEN PERMISSION FROM SCHNEIDER ELECTRIC. THIS DRAWING IS BASED UPON LATEST AVAILABLE INFORMATION AND IS SUBJECT TO CHANGE WITHOUT NOTICE.



TITLE: InRow DIRECT EXPANSION
InRow RD 300mm 30kW Indoor Unit
DUAL FEED 208-230V, w/HUMIDIFIER & REHEAT CE/UL
INTERNAL ISOMETRIC VIEWS

DWG NO: ACRD301P

REV: 1

DRAWN: BALA 10-NOV-20

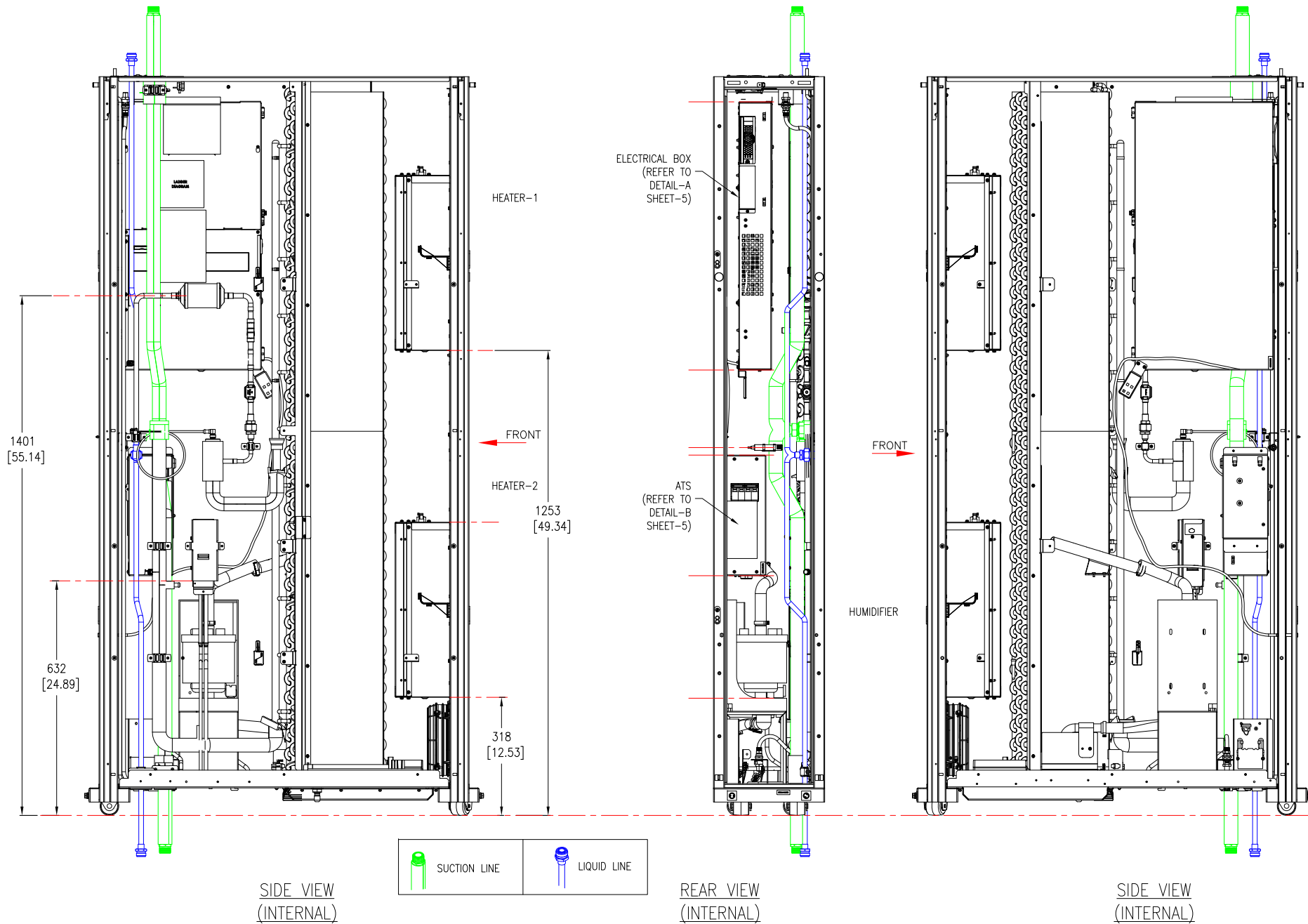
FIRST ANGLE

ENGINEER: RAAM C/K CHENG 10-NOV-20

PROJECTION

PROJECT: SUBMITTAL DRAWINGS SHEET 3 OF 6

APPROVED: RAAM C/K CHENG 10-NOV-20



NOTES:

1. INSTALLATION SHALL COMPLY WITH ALL APPLICABLE NATIONAL, STATE AND LOCAL ELECTRICAL STANDARDS.
2. REFER TO PRODUCT DOCUMENTATION FOR ADDITIONAL DETAILS PRIOR TO INSTALLATION AND SITE PREPARATION WORK.
3. ALL DIMENSIONS ARE IN MILLIMETERS [INCHES].
4. SUCTION PIPE SHOWN WITH INSULATION IN THIS SHEET.
5. SOME STRUCTURAL DETAILS BEEN OMITTED FOR THE PURPOSE OF CLARITY.

THIS DRAWING AND SPECIFICATIONS HEREIN ARE THE PROPERTY OF SCHNEIDER ELECTRIC AND SHALL NOT BE COPIED, REPRODUCED OR USED IN WHOLE OR IN PART, AS THE BASIS FOR THE MANUFACTURE OR SALE OF ITEMS WITHOUT WRITTEN PERMISSION FROM SCHNEIDER ELECTRIC. THIS DRAWING IS BASED UPON LATEST AVAILABLE INFORMATION AND IS SUBJECT TO CHANGE WITHOUT NOTICE.

Schneider Electric

TITLE: InRow DIRECT EXPANSION
InRow RD 300mm 30kW Indoor Unit
DUAL FEED 208-230V, w/HUMIDIFIER & REHEAT CE/UL
INTERNAL VIEWS

DWG NO: ACRD301P

REV: 0

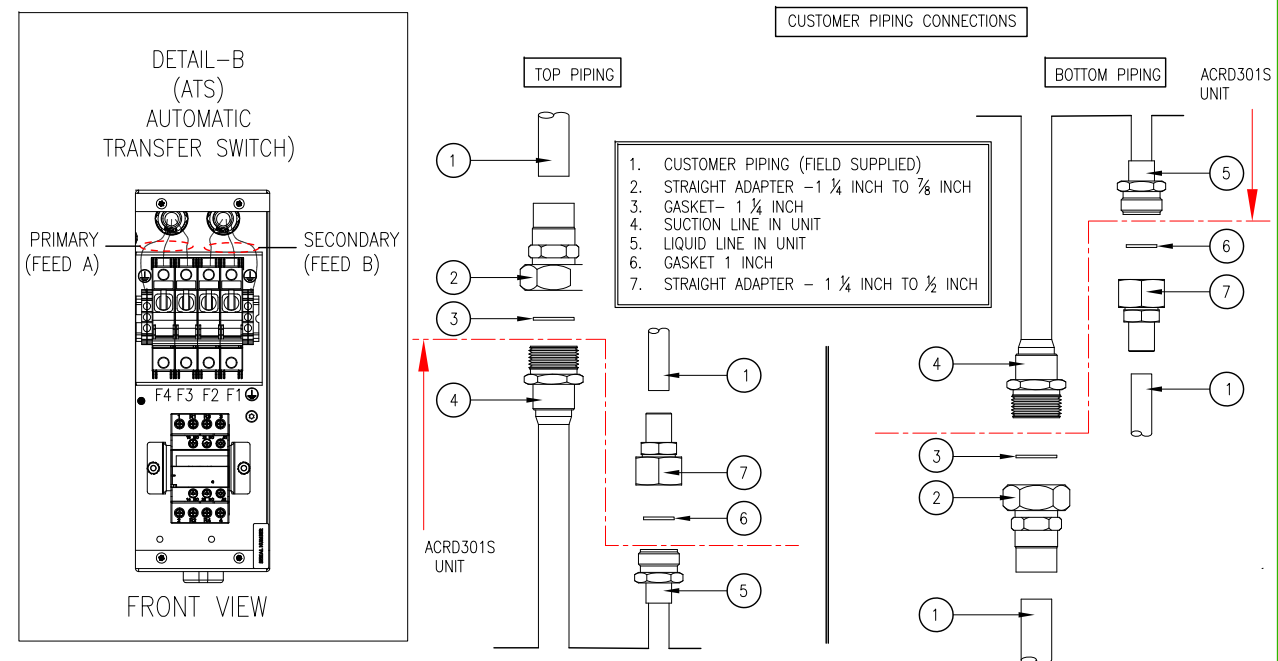
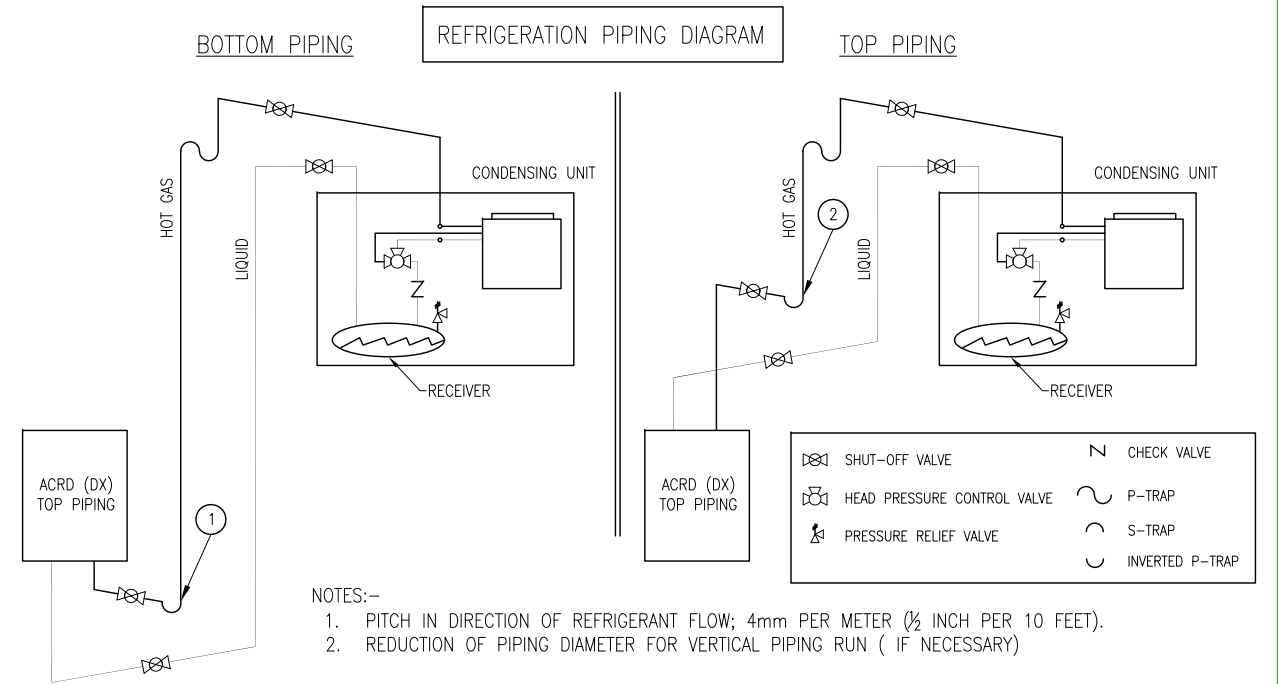
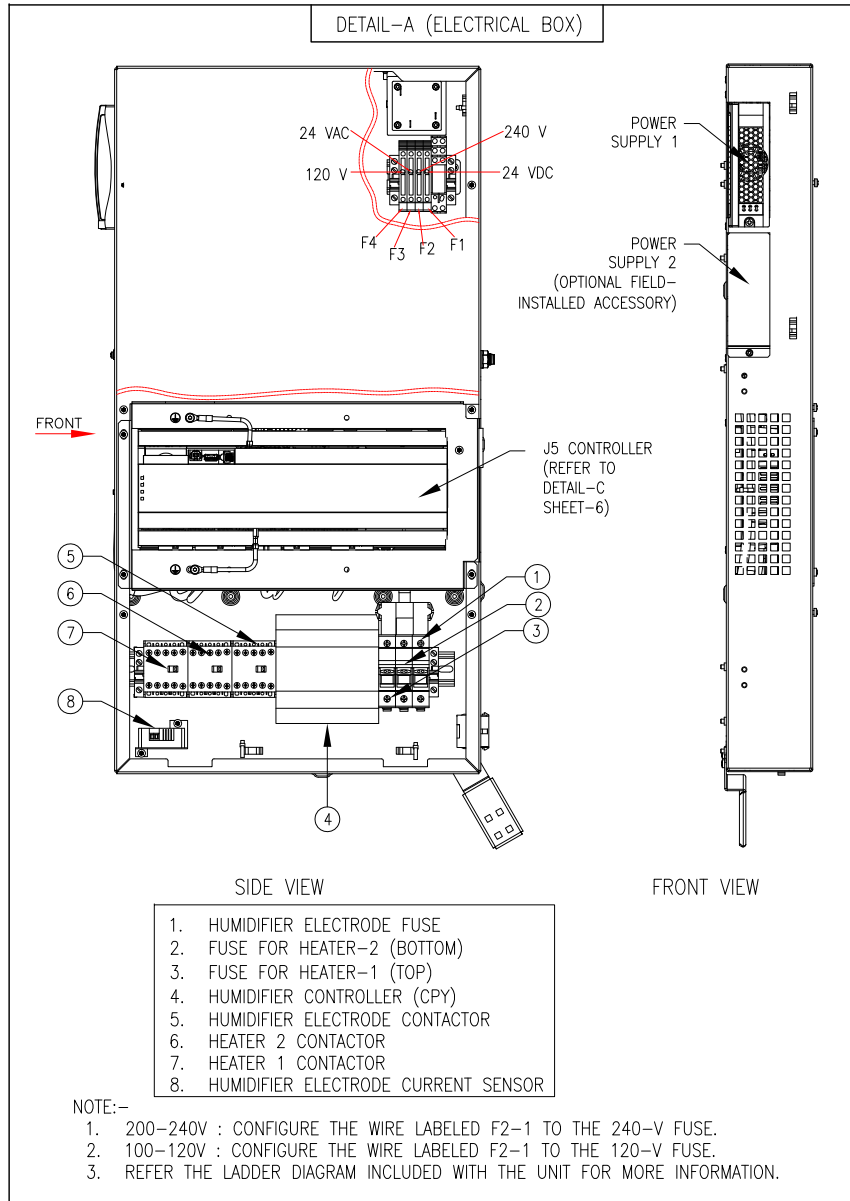
DRAWN: BALA 29-SEP-20

ENGINEER: RAAM C/K CHENG 15-OCT-20

APPROVED: RAAM C/K CHENG 15-OCT-20

PROJECT: SUBMITTAL DRAWINGS SHEET 4 OF 6

FIRST ANGLE PROJECTION



COMMON NOTES:

- INSTALLATION SHALL COMPLY WITH ALL APPLICABLE NATIONAL, STATE AND LOCAL ELECTRICAL STANDARDS.
- REFER TO PRODUCT DOCUMENTATION FOR ADDITIONAL DETAILS PRIOR TO INSTALLATION AND SITE PREPARATION WORK.
- SOME STRUCTURAL DETAILS BEEN OMITTED FOR THE PURPOSE OF CLARITY.

THIS DRAWING AND SPECIFICATIONS HEREIN ARE THE PROPERTY OF SCHNEIDER ELECTRIC AND SHALL NOT BE COPIED, REPRODUCED OR USED IN WHOLE OR IN PART, AS THE BASIS FOR THE MANUFACTURE OR SALE OF ITEMS WITHOUT WRITTEN PERMISSION FROM SCHNEIDER ELECTRIC. THIS DRAWING IS BASED UPON LATEST AVAILABLE INFORMATION AND IS SUBJECT TO CHANGE WITHOUT NOTICE.

Schneider Electric

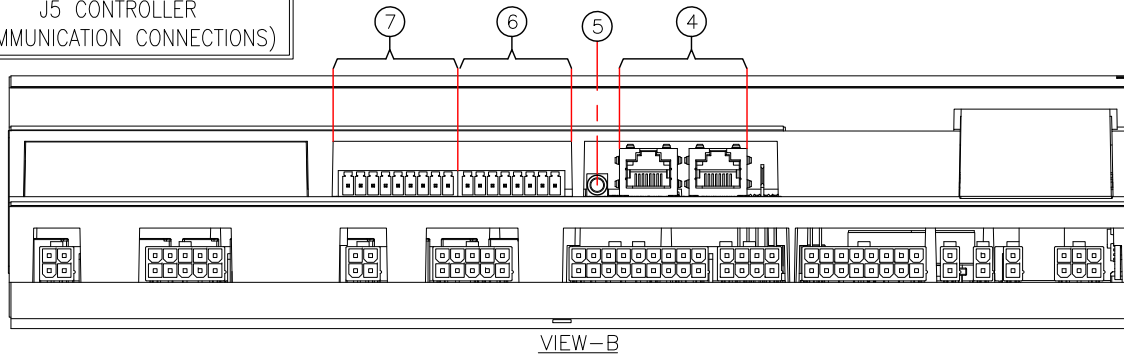
TITLE: InRow DIRECT EXPANSION InRow RD 300mm 30kW Indoor Unit DUAL FEED 208-230V, w/HUMIDIFIER & REHEAT CE/UL INTERNAL DETAILS AND REFRIGERATION PIPING DIAGRAM

PROJECT: SUBMITTAL DRAWINGS | SHEET 5 OF 6

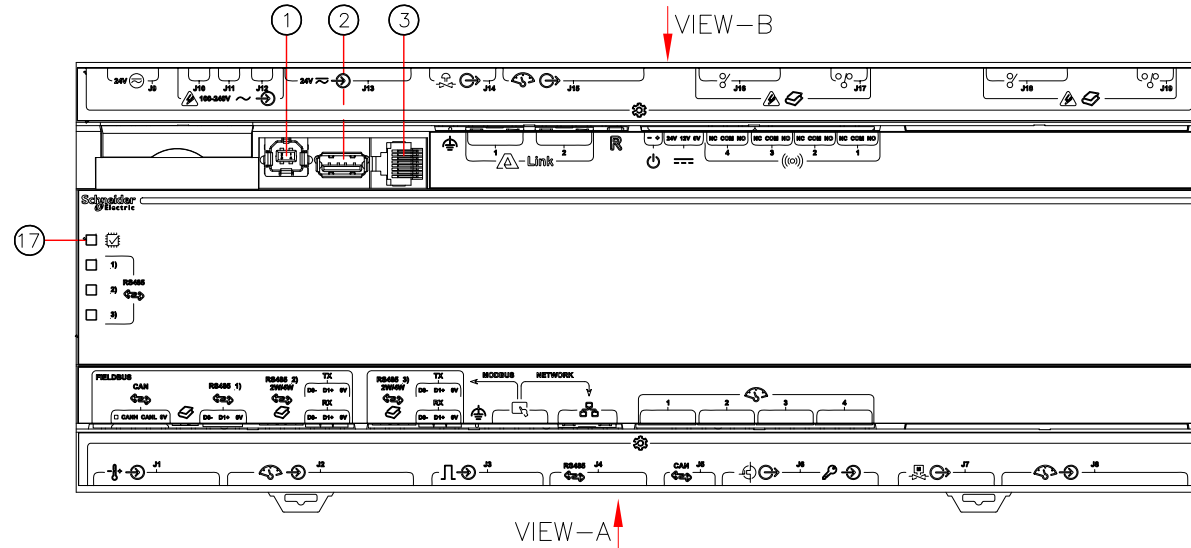
DWG NO: ACRD301P REV: 0

DRAWN: BALA	29-SEP-20	FIRST ANGLE
ENGINEER: RAAM C/K CHENG	15-OCT-20	PROJECTION
APPROVED: RAAM C/K CHENG	15-OCT-20	

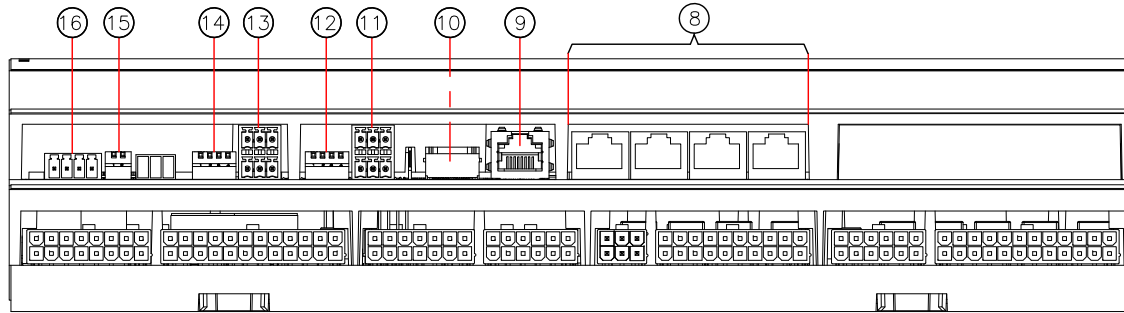
J5 CONTROLLER
(COMMUNICATION CONNECTIONS)



VIEW-B

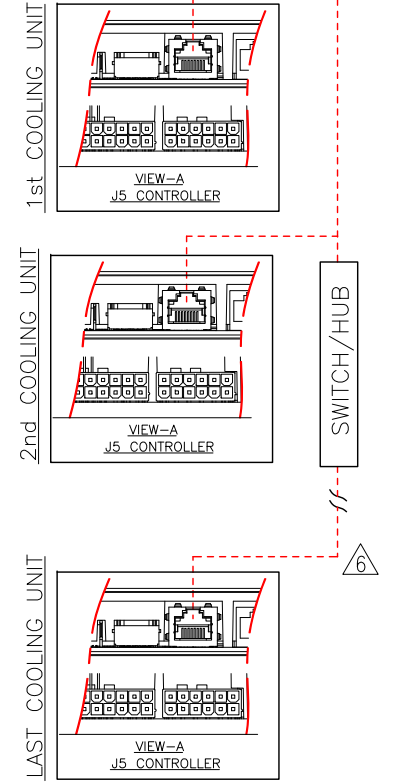


VIEW-A



VIEW-A

J5 CONTROLLER
(NETWORK CONNECTIONS)



NOTES:

1. INSTALLATION SHALL COMPLY WITH ALL APPLICABLE NATIONAL, STATE AND LOCAL ELECTRICAL STANDARDS.
2. REFER TO PRODUCT DOCUMENTATION FOR ADDITIONAL DETAILS PRIOR TO INSTALLATION AND SITE PREPARATION WORK.
3. FOR OUTPUT RELAY DETAILS, MODBUS SWITCH CONFIGURATIONS AND STANDBY INPUTS DETAILS, REFER TO INSTALLATION MANUAL.
4. THE A-LINK BUS CONNECTION ALLOWS A MAXIMUM GROUP OF 20 UNIFLAIR InRow ACRD301P UNITS.
5. TO ENABLE UNITS TO FUNCTION AS A GROUP, LINK THEM TOGETHER USING A STANDARD PIN-OUT CAT-5 CABLE WITH RJ-45 CONNECTORS. THE A-LINK BUS MUST BE TERMINATED AT THE 1st AND LAST UNIT INSTALLED IN THE GROUP. AN A-LINK TERMINATOR IS SUPPLIED WITH EACH UNIT.
- △ 6. THE MAXIMUM WIRE LENGTH FOR THE ENTIRE GROUP MUST NOT EXCEED 500 METERS (1640 FEET).
7. ALL INPUT AND OUTPUT CONNECTIONS SHOULD BE WIRED AS CLASS 2 CIRCUITS.

THIS DRAWING AND SPECIFICATIONS HEREIN ARE THE PROPERTY OF SCHNEIDER ELECTRIC AND SHALL NOT BE COPIED, REPRODUCED OR USED IN WHOLE OR IN PART, AS THE BASIS FOR THE MANUFACTURE OR SALE OF ITEMS WITHOUT WRITTEN PERMISSION FROM SCHNEIDER ELECTRIC. THIS DRAWING IS BASED UPON LATEST AVAILABLE INFORMATION AND IS SUBJECT TO CHANGE WITHOUT NOTICE.



TITLE: InRow DIRECT EXPANSION InRow RD 300mm 30kW Indoor Unit DUAL FEED 208-230V, w/HUMIDIFIER & REHEAT CE/UL COMMUNICATION DETAILS		DWG NO: ACRD301P	REV: 0
DRAWN: BALA	29-SEP-20	ENGINEER: RAAM C/K CHENG	15-OCT-20
PROJECT: SUBMITTAL DRAWINGS	SHEET 6 OF 6	APPROVED: RAAM C/K CHENG	15-OCT-20
			FIRST ANGLE PROJECTION