

1. WATER OUTLET
2. WATER INLET
3. LIQUID LINE
4. SUCTION LINE
5. COMMUNICATION CABLE
6. POWER FEED A INLET
7. POWER FEED B INLET

- NOTE:**
1. SUCTION LINE VALVE CUSTOMER SIDE CONNECTION USE 7/8 inch NOMINAL PIPE.
 2. LIQUID LINE VALVE CUSTOMER SIDE CONNECTION USE 1/2 inch NOMINAL PIPE.
 3. WATER LINE VALVE CUSTOMER SIDE CONNECTION USE 1 inch MALE NPT PIPE FITTINGS.

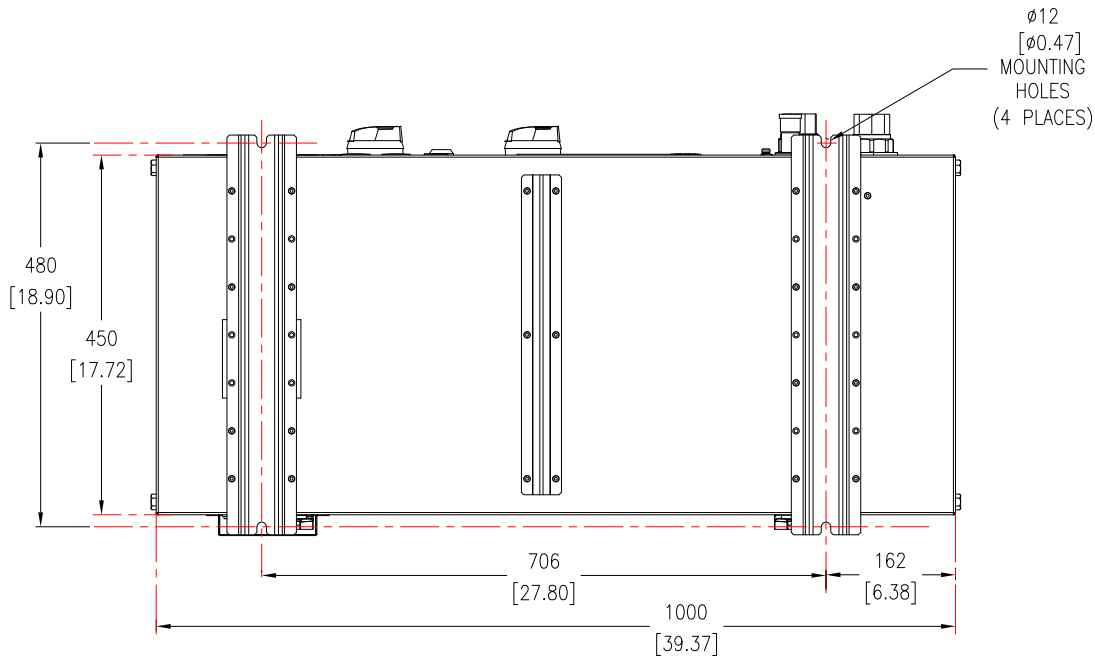
NOTES:

1. INSTALLATION SHALL COMPLY WITH ALL APPLICABLE NATIONAL, STATE AND LOCAL ELECTRICAL STANDARDS.
2. REFER TO PRODUCT DOCUMENTATION FOR ADDITIONAL DETAILS PRIOR TO INSTALLATION AND SITE PREPARATION WORK.
3. ALL DIMENSIONS ARE IN MILLIMETERS [INCHES].
- △ 4. A MINIMUM OF 1000 [39] OF CLEAR SPACE ON ALL SIDES OF UNIT RECOMMENDED FOR SERVICE ACCESS IN SINGLE UNIT INSTALLATION AS WELL BETWEEN UNITS WHEN INSTALLED SIDE BY SIDE / BACK TO BACK / STACKED.
5. POWER/SIGNAL CABLES/PIPE ENTRY FROM LOWER FRONT OF UNIT AS IN DETAIL-A.
6. FOR FACILITY PLANNING DATA AND LIMIT WORKING CONDITIONS, REFER TO SHEET-2 AND FOR PERFORMANCE SPECIFICATIONS REFER TO SHEET-3.
7. NET WEIGHT OF UNIT IS 175 kg [385.8 lb].
8. FLOOR CONTACT AREA OF UNIT : 0.0158m² / 0.17 ft².
- △ 9. THIS INFORMATION PROVIDES APPROXIMATE CENTER OF GRAVITY CALCULATION.

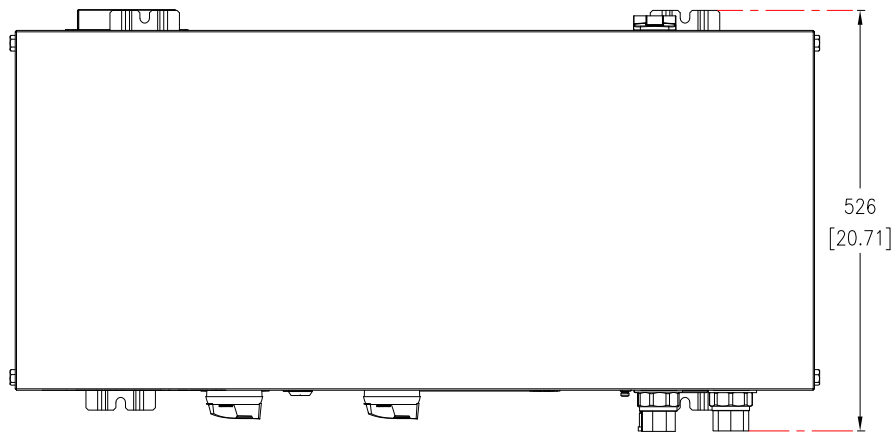
THIS DRAWING AND SPECIFICATIONS HEREIN ARE THE PROPERTY OF SCHNEIDER ELECTRIC AND SHALL NOT BE COPIED, REPRODUCED OR USED IN WHOLE OR IN PART, AS THE BASIS FOR THE MANUFACTURE OR SALE OF ITEMS WITHOUT WRITTEN PERMISSION FROM SCHNEIDER ELECTRIC. THIS DRAWING IS BASED UPON LATEST AVAILABLE INFORMATION AND IS SUBJECT TO CHANGE WITHOUT NOTICE.

Schneider Electric

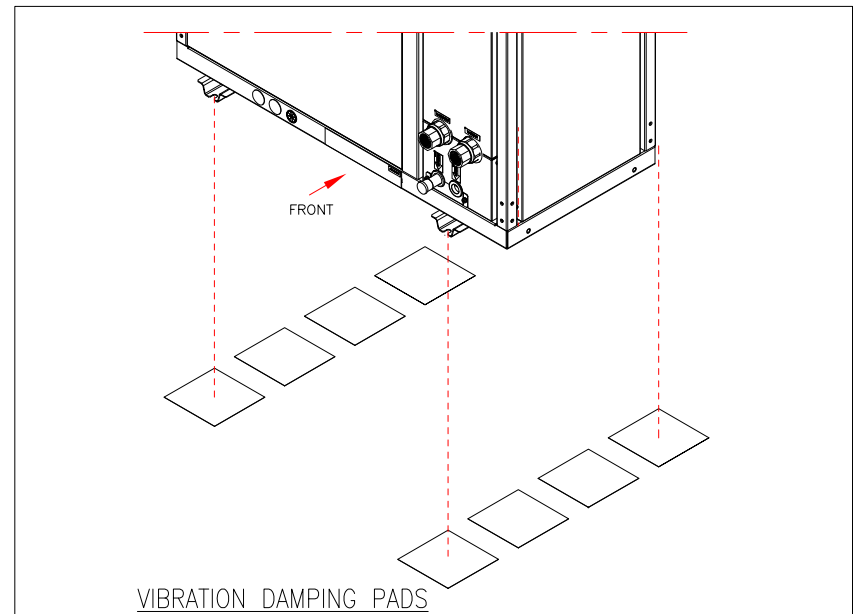
TITLE:	InRow DX 300mm Hydronic Unit 3PH 380-415V 50/60Hz Single Power CE Ambinet down to -40°C GENERAL ARRANGEMENT	DWG NO:	ACHU302-L	REV:	0
PROJECT:	SUBMITTAL DRAWINGS	DRAWN:	BALA	10-JUN-21	FIRST ANGLE PROJECTION
SHEET	1 OF 4	ENGINEER:	H YANG	29-JUN-21	
		APPROVED:	H YANG	29-JUN-21	



BOTTOM VIEW



TOP VIEW



NOTE:

- IT IS RECOMMENDED TO PLACE FIELD-SUPPLIED VIBRATION DAMPING PADS UNDER THE OUTDOOR UNIT TO MINIMIZE VIBRATION AND NOISE.
 RECOMMENDED SPECIFICATIONS : HARDNESS : DUROMETER 90A
 DIMENSION : 152x152mm [6x6inch]
 MATERIAL: GREEN NEOPRENE RUBBER
 THICKNESS: 9.5mm[3/8 inch]
- DO NOT BLOCK THE MOUNTING HOLES OF UNIT WITH THE DAMPING PADS.
- FOR DETAILED INSTALLATION REFER TO PRODUCT INSTALLATION MANUAL.

FACILITY PLANNING DATA	
ELECTRICAL INPUT	3 PH, 380-415 VAC 50/60Hz
POWER CONNECTION TYPE	HARDWIRED
MINIMUM CIRCUIT AMPACITY(MCA)	N/A
MAXIMUM OVERCURRENT PROTECTION (MOP)	N/A
FULL LOAD AMPACITY(FLA)	13.7
FEATURES/OPTIONS	
REFRIGERANT TYPE	R410A
COMPRESSOR TYPE	VARIABLE SPEED

LIMIT WORKING CONDITIONS	
REFRIGERANT TYPE	R410A
OPERATING OUTDOOR TEMPERATURE	-40°C TO 46°C (-40°F TO 115°F)
ALTITUDE	3000 M (9843 FT)
STORAGE CONDITIONS	
TEMPERATURE	-25°C TO +65°C (-13°F TO +149°F)
HUMIDITY	5 TO 95%RH

NOTES:

- INSTALLATION SHALL COMPLY WITH ALL APPLICABLE NATIONAL, STATE AND LOCAL ELECTRICAL STANDARDS.
- REFER TO PRODUCT DOCUMENTATION FOR ADDITIONAL DETAILS PRIOR TO INSTALLATION AND SITE PREPARATION WORK.
- ALL DIMENSIONS ARE IN MILLIMETERS [INCHES].

THIS DRAWING AND SPECIFICATIONS HEREIN ARE THE PROPERTY OF SCHNEIDER ELECTRIC AND SHALL NOT BE COPIED, REPRODUCED OR USED IN WHOLE OR IN PART, AS THE BASIS FOR THE MANUFACTURE OR SALE OF ITEMS WITHOUT WRITTEN PERMISSION FROM SCHNEIDER ELECTRIC. THIS DRAWING IS BASED UPON LATEST AVAILABLE INFORMATION AND IS SUBJECT TO CHANGE WITHOUT NOTICE.

Schneider Electric

TITLE: InRow DX 300mm
Hydronic Unit
3PH 380-415V 50/60Hz Single Power CE
Ambient down to -40°C
TOP AND BOTTOM VIEWS

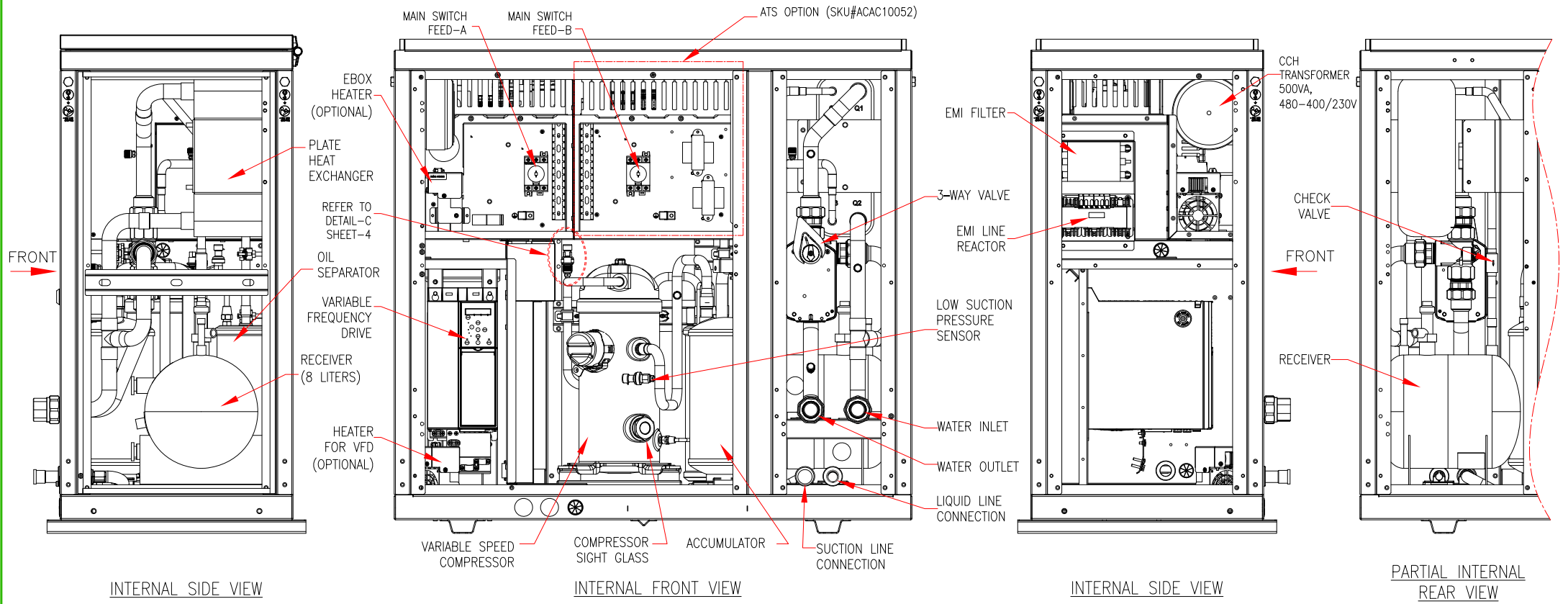
DWG NO: ACHU302-L

REV. 0

PROJECT: SUBMITTAL DRAWINGS SHEET 2 OF 4

DRAWN:	BALA	10-JUN-21
ENGINEER:	H YANG	29-JUN-21
APPROVED:	H YANG	29-JUN-21

FIRST ANGLE PROJECTION

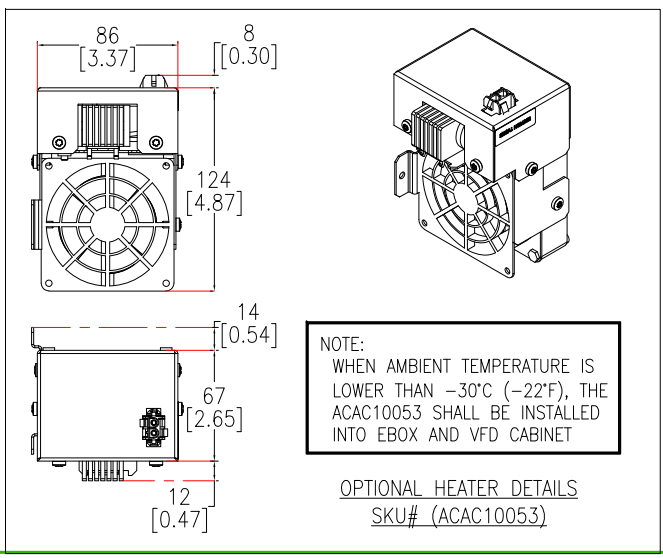


INTERNAL SIDE VIEW

INTERNAL FRONT VIEW

INTERNAL SIDE VIEW

PARTIAL INTERNAL REAR VIEW



NOTES:

1. INSTALLATION SHALL COMPLY WITH ALL APPLICABLE NATIONAL, STATE AND LOCAL ELECTRICAL STANDARDS.
2. REFER TO PRODUCT DOCUMENTATION FOR ADDITIONAL DETAILS PRIOR TO INSTALLATION AND SITE PREPARATION WORK.
3. ALL DIMENSIONS ARE IN MILLIMETERS [INCHES].
4. SOME STRUCTURAL DETAILS BEEN OMITTED FOR THE PURPOSE OF CLARITY.

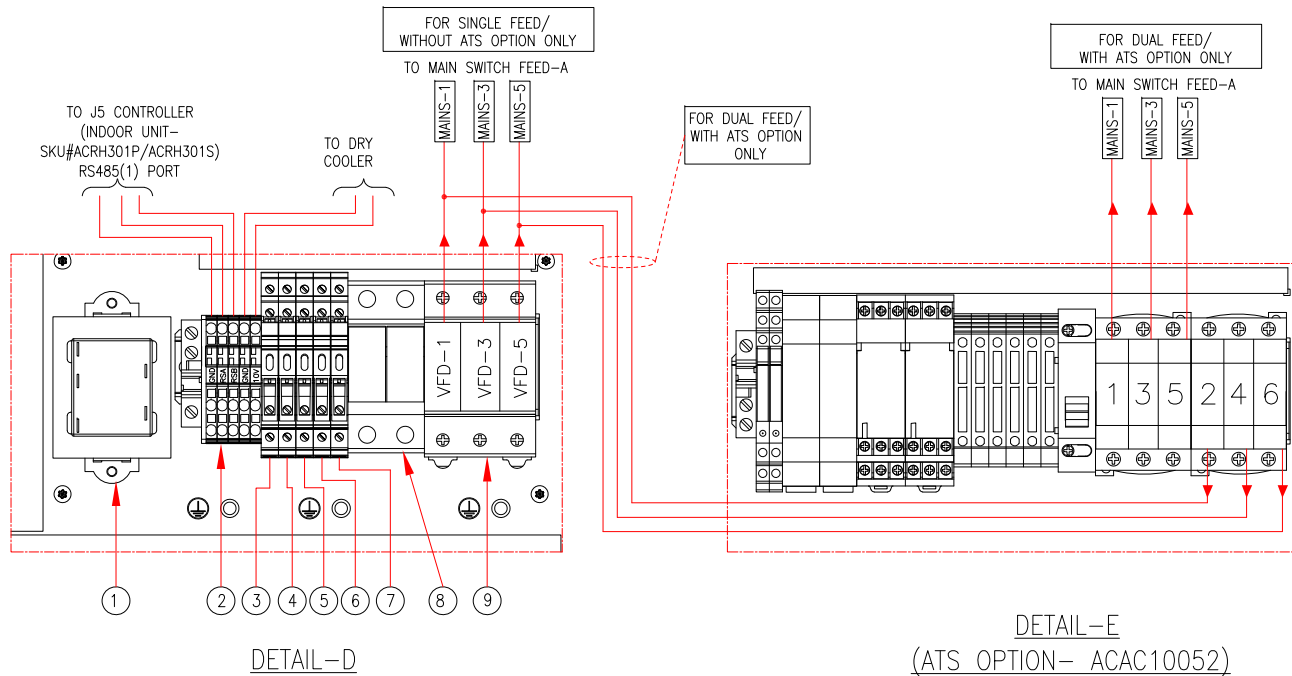
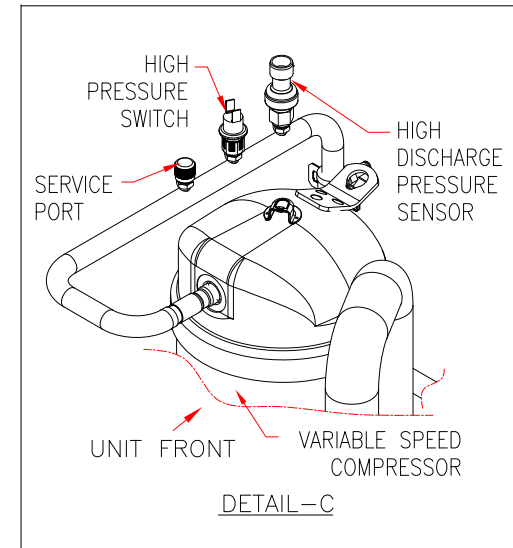
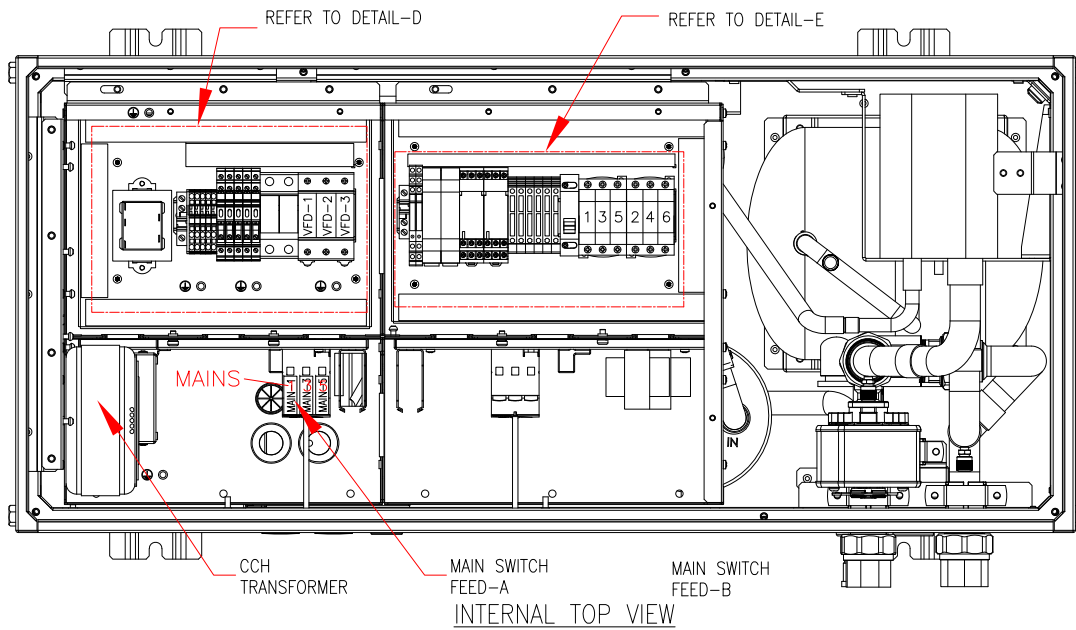
THIS DRAWING AND SPECIFICATIONS HEREIN ARE THE PROPERTY OF SCHNEIDER ELECTRIC AND SHALL NOT BE COPIED, REPRODUCED OR USED IN WHOLE OR IN PART, AS THE BASIS FOR THE MANUFACTURE OR SALE OF ITEMS WITHOUT WRITTEN PERMISSION FROM SCHNEIDER ELECTRIC. THIS DRAWING IS BASED UPON LATEST AVAILABLE INFORMATION AND IS SUBJECT TO CHANGE WITHOUT NOTICE.



TITLE: InRow DX 300mm Hydronic Unit
3PH 380-415V 50/60Hz Single Power CE
Ambinet down to -40°C
INTERNAL VIEWS

PROJECT: SUBMITTAL DRAWINGS SHEET 3 OF 4

DWG NO:	ACHU302-L		REV:	0
DRAWN:	BALA	10-JUN-21	ANGLE	FIRST
ENGINEER:	H YANG	29-JUN-21	ANGLE	FIRST
APPROVED:	H YANG	29-JUN-21	ANGLE	PROJECTION



1. ACT TRANSFORMER
2. TERMINAL BLOCK
3. FLOODED KIT HEATER FUSE
4. E-BOX HEATER FUSE
5. CMP DRIVE HEATER FUSE
6. ACT TRANSFORMER FUSE
7. CCH FUSE
8. CRANK CASE HEATER TRANSFORMER FUSE
9. COMPRESSOR-VARIABLE SPEED DRIVE SWITCH

NOTES:
 1. INSTALLATION SHALL COMPLY WITH ALL APPLICABLE NATIONAL, STATE AND LOCAL ELECTRICAL STANDARDS.
 2. REFER TO PRODUCT DOCUMENTATION FOR ADDITIONAL DETAILS PRIOR TO INSTALLATION AND SITE PREPARATION WORK.
 3. SOME STRUCTURAL DETAILS BEEN OMITTED FOR THE PURPOSE OF CLARITY.

THIS DRAWING AND SPECIFICATIONS HEREIN ARE THE PROPERTY OF SCHNEIDER ELECTRIC AND SHALL NOT BE COPIED, REPRODUCED OR USED IN WHOLE OR IN PART, AS THE BASIS FOR THE MANUFACTURE OR SALE OF ITEMS WITHOUT WRITTEN PERMISSION FROM SCHNEIDER ELECTRIC. THIS DRAWING IS BASED UPON LATEST AVAILABLE INFORMATION AND IS SUBJECT TO CHANGE WITHOUT NOTICE.



TITLE:	InRow DX 300mm Hydronic Unit 3PH 380-415V 50/60Hz Single Power CE Ambinet down to -40°C INTERNAL VIEWS AND INTERFACE DETAILS	DWG NO:	ACHU302-L	REV:	0
PROJECT:	SUBMITTAL DRAWINGS	APPROVED:	H YANG	DATE:	29-JUN-21
SHEET:	4 OF 4	ENGINEER:	H YANG	DATE:	29-JUN-21
				ANGLE:	FIRST
				PROJECTION:	ANGLE