

1. WATER OUTLET
2. WATER INLET
3. LIQUID LINE
4. SUCTION LINE
5. COMMUNICATION CABLE
6. POWER FEED A INLET
7. POWER FEED B INLET

NOTE:

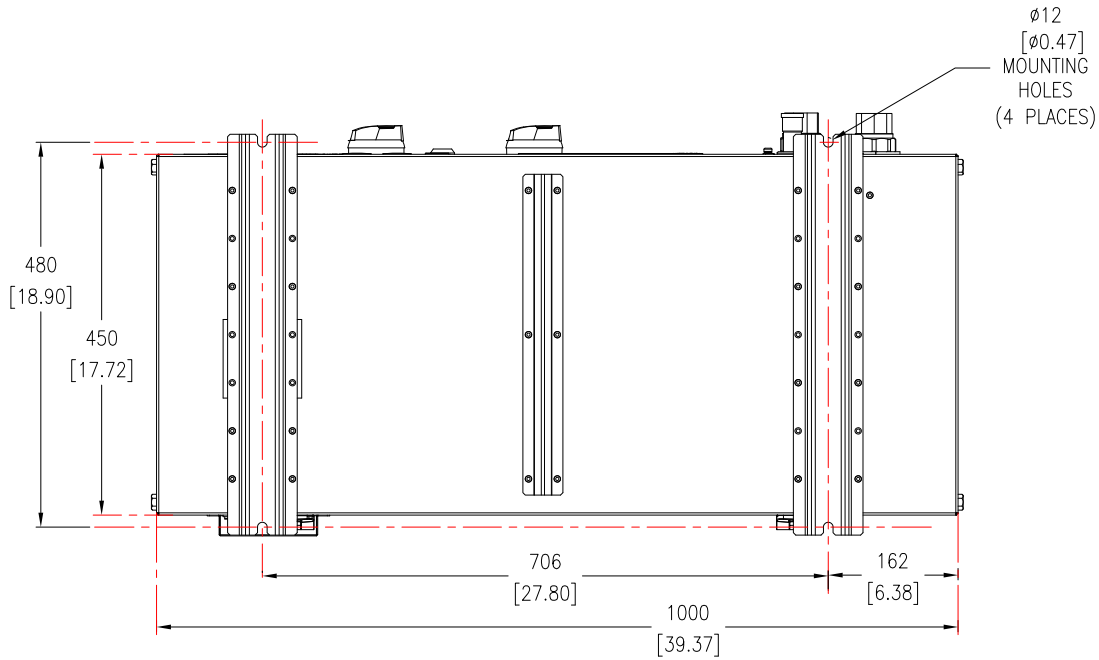
1. SUCTION LINE VALVE CUSTOMER SIDE CONNECTION USE 7/8 inch NOMINAL PIPE.
2. LIQUID LINE VALVE CUSTOMER SIDE CONNECTION USE 1/2 inch NOMINAL PIPE.
3. WATER LINE VALVE CUSTOMER SIDE CONNECTION USE 1 inch MALE NPT PIPE FITTINGS.

- NOTES:**
1. INSTALLATION SHALL COMPLY WITH ALL APPLICABLE NATIONAL, STATE AND LOCAL ELECTRICAL STANDARDS.
 2. REFER TO PRODUCT DOCUMENTATION FOR ADDITIONAL DETAILS PRIOR TO INSTALLATION AND SITE PREPARATION WORK.
 3. ALL DIMENSIONS ARE IN MILLIMETERS [INCHES].
 4. A MINIMUM OF 1000 [39] OF CLEAR SPACE ON ALL SIDES OF UNIT RECOMMENDED FOR SERVICE ACCESS IN SINGLE UNIT INSTALLATION AS WELL BETWEEN UNITS WHEN INSTALLED SIDE BY SIDE / BACK TO BACK / STACKED.
 5. POWER/SIGNAL CABLES/PIPE ENTRY FROM LOWER FRONT OF UNIT AS IN DETAIL-A.
 6. FOR FACILITY PLANNING DATA AND LIMIT WORKING CONDITIONS, REFER TO SHEET-2 AND FOR PERFORMANCE SPECIFICATIONS REFER TO SHEET-3.
 7. NET WEIGHT OF UNIT IS 175 kg [385.8 lb].
 8. FLOOR CONTACT AREA OF UNIT : 0.0158m² / 0.17 ft².
 9. THIS INFORMATION PROVIDES APPROXIMATE CENTER OF GRAVITY CALCULATION.

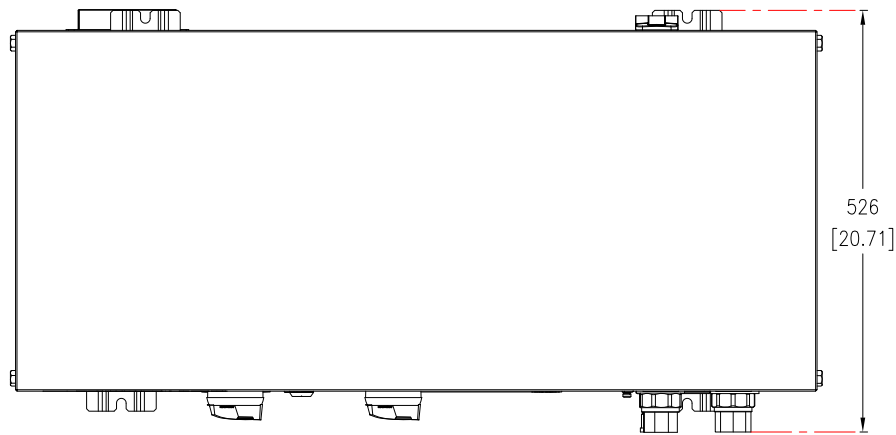
THIS DRAWING AND SPECIFICATIONS HEREIN ARE THE PROPERTY OF SCHNEIDER ELECTRIC AND SHALL NOT BE COPIED, REPRODUCED OR USED IN WHOLE OR IN PART, AS THE BASIS FOR THE MANUFACTURE OR SALE OF ITEMS WITHOUT WRITTEN PERMISSION FROM SCHNEIDER ELECTRIC. THIS DRAWING IS BASED UPON LATEST AVAILABLE INFORMATION AND IS SUBJECT TO CHANGE WITHOUT NOTICE.



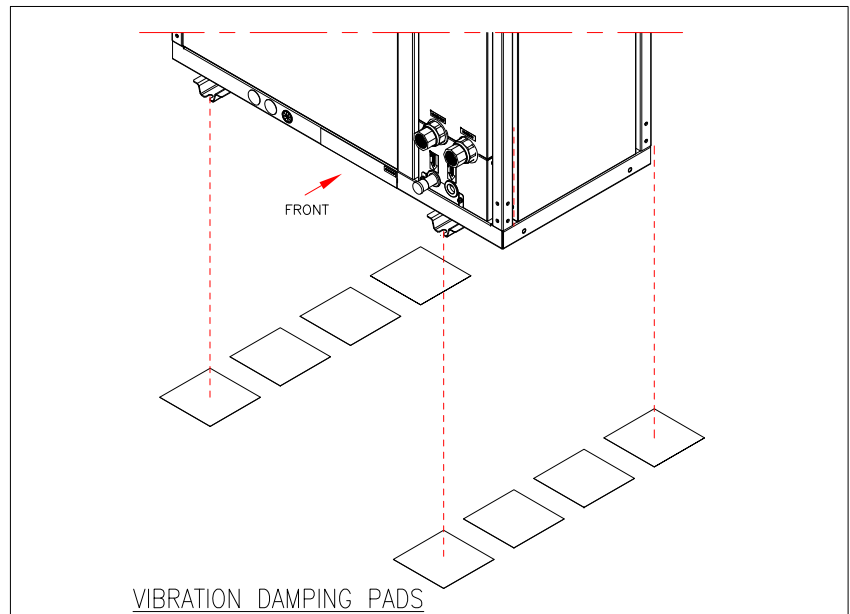
TITLE:	InRow DX 300mm Hydronic Unit 3PH 380-415V 50/60Hz Single Power CE Ambient above 0°C GENERAL ARRANGEMENT	DWG NO:	ACHU302	REV:	0
PROJECT:	SUBMITTAL DRAWINGS	SHEET	1 OF 4	DRAWN:	BALA
				ENGINEER:	H YANG
				APPROVED:	H YANG
					10-JUN-21
					29-JUN-21
					29-JUN-21
					FIRST ANGLE PROJECTION



BOTTOM VIEW



TOP VIEW



NOTE:

- IT IS RECOMMENDED TO PLACE FIELD-SUPPLIED VIBRATION DAMPING PADS UNDER THE OUTDOOR UNIT TO MINIMIZE VIBRATION AND NOISE.
 RECOMMENDED SPECIFICATIONS : HARDNESS : DUROMETER 90A
 DIMENSION : 152x152mm [6x6inch]
 MATERIAL: GREEN NEOPRENE RUBBER
 THICKNESS: 9.5mm[3/8 inch]
- DO NOT BLOCK THE MOUNTING HOLES OF UNIT WITH THE DAMPING PADS.
- FOR DETAILED INSTALLATION REFER TO PRODUCT INSTALLATION MANUAL.

FACILITY PLANNING DATA	
ELECTRICAL INPUT	3 PH, 380-415 VAC 50/60Hz
POWER CONNECTION TYPE	HARDWIRED
MINIMUM CIRCUIT AMPACITY(MCA)	N/A
MAXIMUM OVERCURRENT PROTECTION (MOP)	N/A
FULL LOAD AMPACITY(FLA)	13.7
FEATURES/OPTIONS	
REFRIGERANT TYPE	R410A
COMPRESSOR TYPE	VARIABLE SPEED

LIMIT WORKING CONDITIONS	
REFRIGERANT TYPE	R410A
OPERATING OUTDOOR TEMPERATURE	0°C to +46°C (32F to +115°F)
ALTITUDE	3000 M (9843 FT)
STORAGE CONDITIONS	
TEMPERATURE	-25°C TO +65°C (-13°F TO +149°F)
HUMIDITY	5 TO 95%RH

NOTES:

- INSTALLATION SHALL COMPLY WITH ALL APPLICABLE NATIONAL, STATE AND LOCAL ELECTRICAL STANDARDS.
- REFER TO PRODUCT DOCUMENTATION FOR ADDITIONAL DETAILS PRIOR TO INSTALLATION AND SITE PREPARATION WORK.
- ALL DIMENSIONS ARE IN MILLIMETERS [INCHES].

THIS DRAWING AND SPECIFICATIONS HEREIN ARE THE PROPERTY OF SCHNEIDER ELECTRIC AND SHALL NOT BE COPIED, REPRODUCED OR USED IN WHOLE OR IN PART, AS THE BASIS FOR THE MANUFACTURE OR SALE OF ITEMS WITHOUT WRITTEN PERMISSION FROM SCHNEIDER ELECTRIC. THIS DRAWING IS BASED UPON LATEST AVAILABLE INFORMATION AND IS SUBJECT TO CHANGE WITHOUT NOTICE.

Schneider Electric

TITLE: InRow DX 300mm
Hydronic Unit
3PH 380-415V 50/60Hz Single Power CE
Ambient above 0°C
TOP AND BOTTOM VIEWS

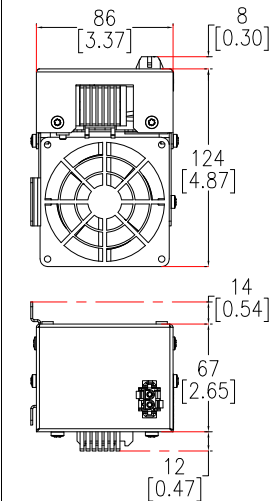
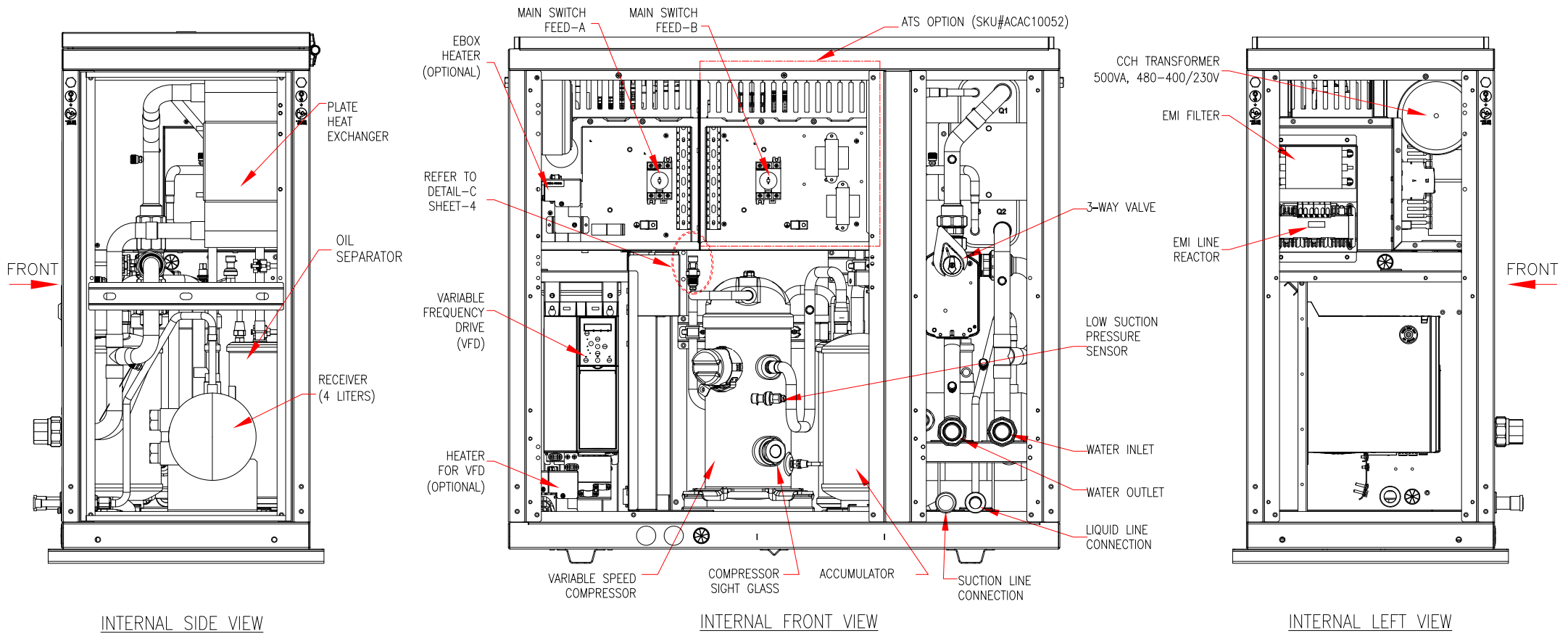
DWG NO: ACHU302

REV. 0

PROJECT: SUBMITTAL DRAWINGS SHEET 2 OF 4

DRAWN:	BALA	10-JUN-21
ENGINEER:	H YANG	29-JUN-21
APPROVED:	H YANG	29-JUN-21

FIRST ANGLE PROJECTION



NOTE:
 WHEN AMBIENT TEMPERATURE IS LOWER THAN -30°C (-22°F), THE ACAC10053 SHALL BE INSTALLED INTO EBOX AND VFD CABINET

OPTIONAL HEATER DETAILS
 SKU# (ACAC10053)

NOTES:

1. INSTALLATION SHALL COMPLY WITH ALL APPLICABLE NATIONAL, STATE AND LOCAL ELECTRICAL STANDARDS.
2. REFER TO PRODUCT DOCUMENTATION FOR ADDITIONAL DETAILS PRIOR TO INSTALLATION AND SITE PREPARATION WORK.
3. ALL DIMENSIONS ARE IN MILLIMETERS [INCHES].
4. SOME STRUCTURAL DETAILS BEEN OMITTED FOR THE PURPOSE OF CLARITY.

THIS DRAWING AND SPECIFICATIONS HEREIN ARE THE PROPERTY OF SCHNEIDER ELECTRIC AND SHALL NOT BE COPIED, REPRODUCED OR USED IN WHOLE OR IN PART, AS THE BASIS FOR THE MANUFACTURE OR SALE OF ITEMS WITHOUT WRITTEN PERMISSION FROM SCHNEIDER ELECTRIC. THIS DRAWING IS BASED UPON LATEST AVAILABLE INFORMATION AND IS SUBJECT TO CHANGE WITHOUT NOTICE.



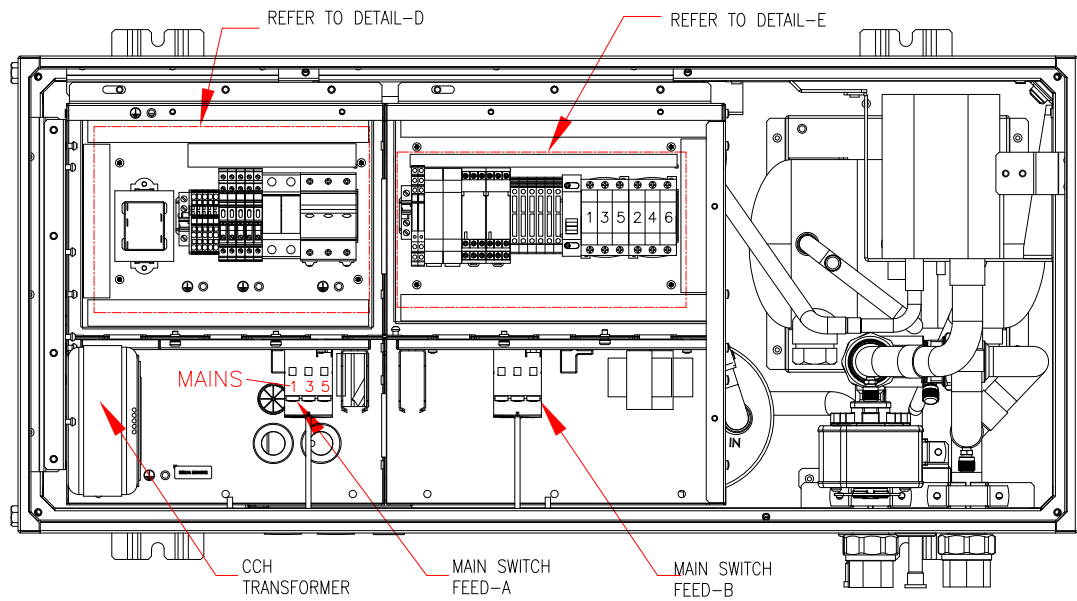
TITLE: InRow DX 300mm Hydronic Unit
 3PH 380-415V 50/60Hz Single Power CE
 Ambient above 0°C

PROJECT: SUBMITTAL DRAWINGS SHEET 3 OF 4

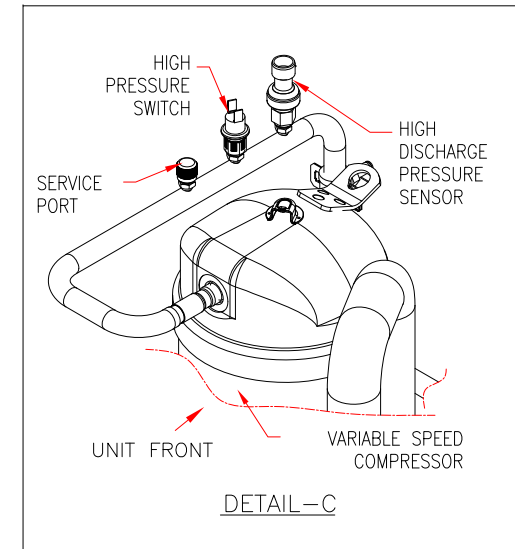
DWG NO: ACHU302

DRAWN:	BALA	10-JUN-21
ENGINEER:	H YANG	29-JUN-21
APPROVED:	H YANG	29-JUN-21

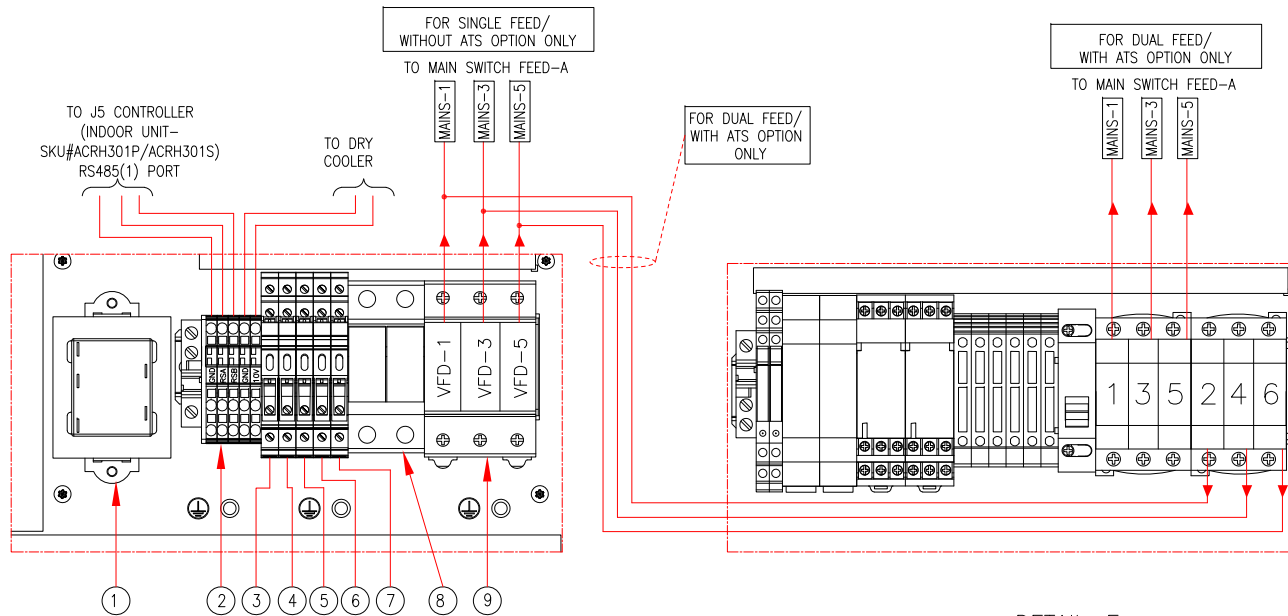
REV: 0
 FIRST ANGLE PROJECTION



INTERNAL TOP VIEW



DETAIL-C



DETAIL-D

DETAIL-E
(ATS OPTION- ACAC10052)

- | | |
|----|--|
| 1. | ACT TRANSFORMER |
| 2. | TERMINAL BLOCK |
| 3. | FLOODED KIT HEATER FUSE |
| 4. | E-BOX HEATER FUSE |
| 5. | CMP DRIVE HEATER FUSE |
| 6. | ACT TRANSFORMER FUSE |
| 7. | CCH FUSE |
| 8. | CRANK CASE HEATER TRANSFORMER FUSE |
| 9. | COMPRESSOR-VARIABLE SPEED DRIVE SWITCH |

- NOTES:
1. INSTALLATION SHALL COMPLY WITH ALL APPLICABLE NATIONAL, STATE AND LOCAL ELECTRICAL STANDARDS.
 2. REFER TO PRODUCT DOCUMENTATION FOR ADDITIONAL DETAILS PRIOR TO INSTALLATION AND SITE PREPARATION WORK.
 3. SOME STRUCTURAL DETAILS BEEN OMITTED FOR THE PURPOSE OF CLARITY.

THIS DRAWING AND SPECIFICATIONS HEREIN ARE THE PROPERTY OF SCHNEIDER ELECTRIC AND SHALL NOT BE COPIED, REPRODUCED OR USED IN WHOLE OR IN PART, AS THE BASIS FOR THE MANUFACTURE OR SALE OF ITEMS WITHOUT WRITTEN PERMISSION FROM SCHNEIDER ELECTRIC. THIS DRAWING IS BASED UPON LATEST AVAILABLE INFORMATION AND IS SUBJECT TO CHANGE WITHOUT NOTICE.



TITLE:	InRow DX 300mm Hydronic Unit 3PH 380-415V 50/60Hz Single Power CE Ambient above 0°C INTERNAL VIEWS AND DETAILS	DWG NO:	ACHU302	REV:	0
PROJECT:	SUBMITTAL DRAWINGS	SHEET	4 OF 4	APPROVED:	H YANG
				ENGINEER:	H YANG
					29-JUN-21
					29-JUN-21
					FIRST ANGLE PROJECTION