

- 1. WATER OUTLET
- 2. WATER INLET
- 3. LIQUID LINE
- 4. SUCTION LINE
- 5. COMMUNICATION CABLE
- 6. POWER FEED A INLET
- 7. POWER FEED B INLET

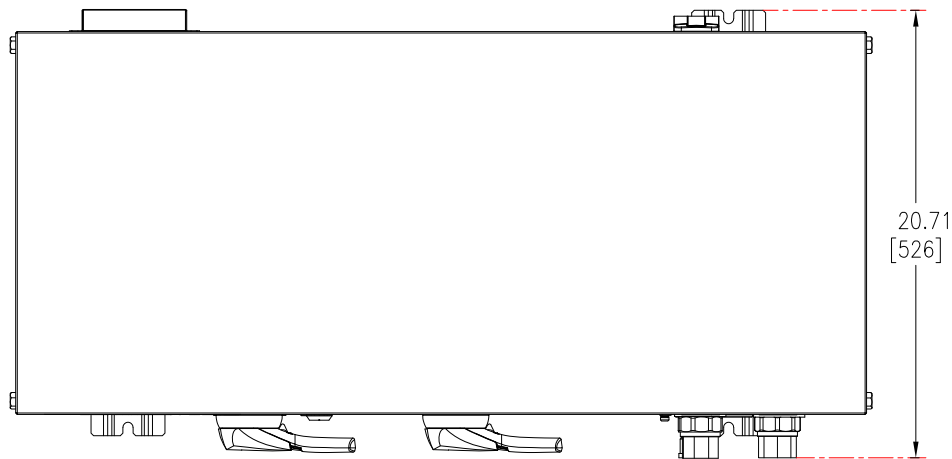
- NOTE:
- 1. SUCTION LINE VALVE CUSTOMER SIDE CONNECTION USE 7/8 inch NOMINAL PIPE.
 - 2. LIQUID LINE VALVE CUSTOMER SIDE CONNECTION USE 1/2 inch NOMINAL PIPE.
 - 3. WATER LINE VALVE CUSTOMER SIDE CONNECTION USE 1 inch MALE NPT PIPE FITTINGS.

- NOTES:
- 1. INSTALLATION SHALL COMPLY WITH ALL APPLICABLE NATIONAL, STATE AND LOCAL ELECTRICAL STANDARDS.
 - 2. REFER TO PRODUCT DOCUMENTATION FOR ADDITIONAL DETAILS PRIOR TO INSTALLATION AND SITE PREPARATION WORK.
 - 3. ALL DIMENSIONS ARE IN INCHES [MILLIMETERS].
 - △4. A MINIMUM OF 39 [1000] OF CLEAR SPACE ON ALL SIDES OF UNIT RECOMMENDED FOR SERVICE ACCESS IN SINGLE UNIT INSTALLATION AS WELL BETWEEN UNITS WHEN INSTALLED SIDE BY SIDE / BACK TO BACK / STACKED.
 - 5. POWER/SIGNAL CABLES/PIPE ENTRY FROM LOWER FRONT OF UNIT AS IN DETAIL-A.
 - 6. FOR FACILITY PLANNING DATA AND LIMIT WORKING CONDITIONS, REFER TO SHEET-2 AND FOR PERFORMANCE SPECIFICATIONS REFER TO SHEET-3.
 - 7. NET WEIGHT OF UNIT IS 396.8 lb [180 kg].
 - 8. FLOOR CONTACT AREA OF UNIT : 0.17 ft²/ 0.0158m².
 - △9. THIS INFORMATION PROVIDES APPROXIMATE CENTER OF GRAVITY CALCULATION.

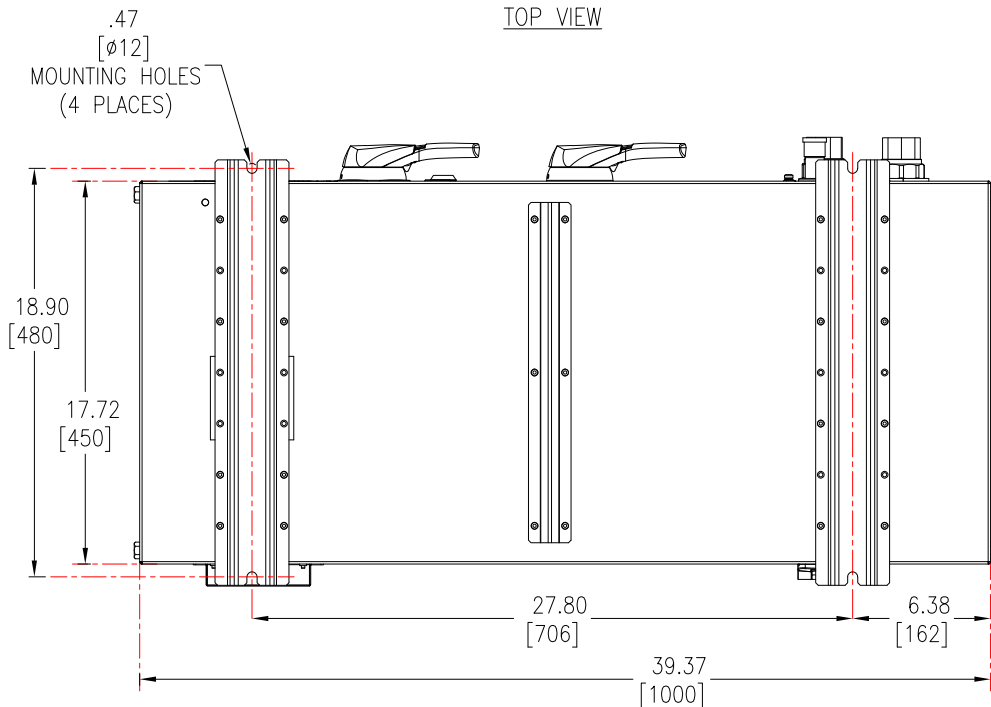
THIS DRAWING AND SPECIFICATIONS HEREIN ARE THE PROPERTY OF SCHNEIDER ELECTRIC AND SHALL NOT BE COPIED, REPRODUCED OR USED IN WHOLE OR IN PART, AS THE BASIS FOR THE MANUFACTURE OR SALE OF ITEMS WITHOUT WRITTEN PERMISSION FROM SCHNEIDER ELECTRIC. THIS DRAWING IS BASED UPON LATEST AVAILABLE INFORMATION AND IS SUBJECT TO CHANGE WITHOUT NOTICE.



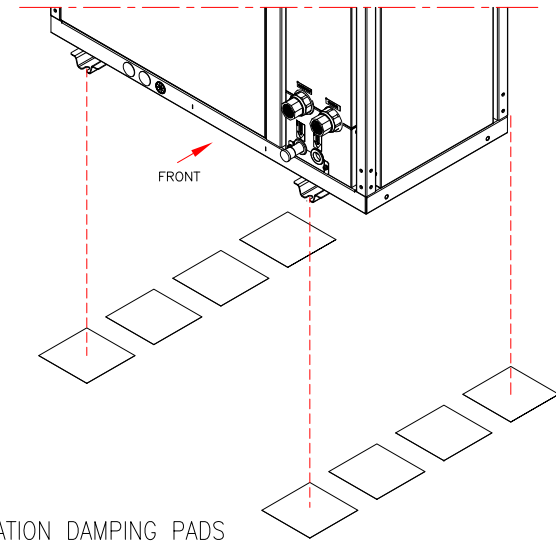
TITLE: InRow DX 300mm Hydronic Unit 3Ph 200-240V 50/60Hz Single Power UL Ambient above 0°C GENERAL ARRANGEMENT		DWG NO: ACHU300		REV. 0
PROJECT: SUBMITTAL DRAWINGS		DRAWN BY: BALA	10-JUN-21	THIRD
SHEET 1 OF 4		ENGINEER: H YANG	29-JUN-21	ANGLE
		APPROVED BY: H YANG	29-JUN-21	PROJECTION



TOP VIEW



BOTTOM VIEW



VIBRATION DAMPING PADS

NOTE:

- IT IS RECOMMENDED TO PLACE FIELD-SUPPLIED VIBRATION DAMPING PADS UNDER THE OUTDOOR UNIT TO MINIMIZE VIBRATION AND NOISE.
RECOMMENDED SPECIFICATIONS : HARDNESS : DUROMETER 90A
DIMENSION : 6x6inch [152x152mm]
MATERIAL: GREEN NEOPRENE RUBBER
THICKNESS: 3/8 inch[9.5mm]
- DO NOT BLOCK THE MOUNTING HOLES OF UNIT WITH THE DAMPING PADS.
- FOR DETAILED INSTALLATION REFER TO PRODUCT INSTALLATION MANUAL.

LIMIT WORKING CONDITIONS	
REFRIGERANT TYPE	R410A
OPERATING OUTDOOR TEMPERATURE	32F TO +115°F (0°C TO +46°C)
ALTITUDE	9843 FT (3000 M)
STORAGE CONDITIONS	
TEMPERATURE	-13°F TO +149°F (-25°C TO +65°C)
HUMIDITY	5 TO 95%RH

FACILITY PLANNING DATA	
ELECTRICAL INPUT	3 PH, 200-240 VAC 50/60Hz
POWER CONNECTION TYPE	HARDWIRED
MINIMUM CIRCUIT AMPACITY(MCA)	25
MAXIMUM OVERCURRENT PROTECTION (MOP)	45
SHORT CIRCUIT RATING	65kAIC
FEATURES/OPTIONS	
REFRIGERANT TYPE	R410A
COMPRESSOR TYPE	VARIABLE SPEED

NOTES:

- INSTALLATION SHALL COMPLY WITH ALL APPLICABLE NATIONAL, STATE AND LOCAL ELECTRICAL STANDARDS.
- REFER TO PRODUCT DOCUMENTATION FOR ADDITIONAL DETAILS PRIOR TO INSTALLATION AND SITE PREPARATION WORK.
- ALL DIMENSIONS ARE IN INCHES [MILLIMETERS].

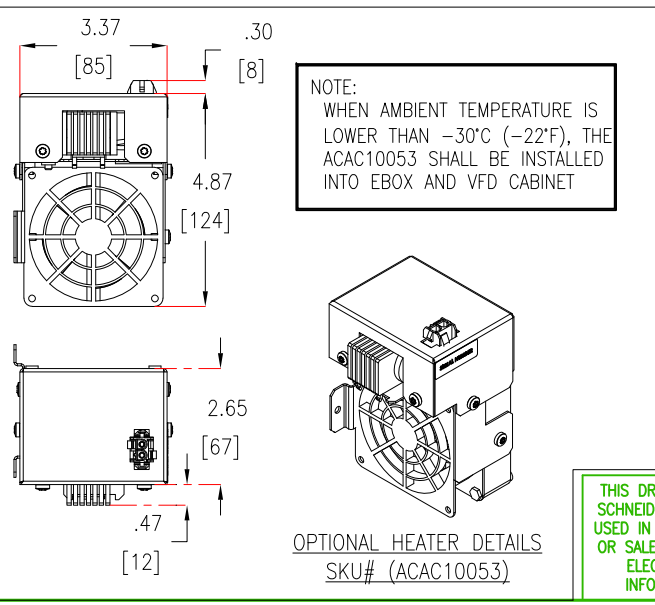
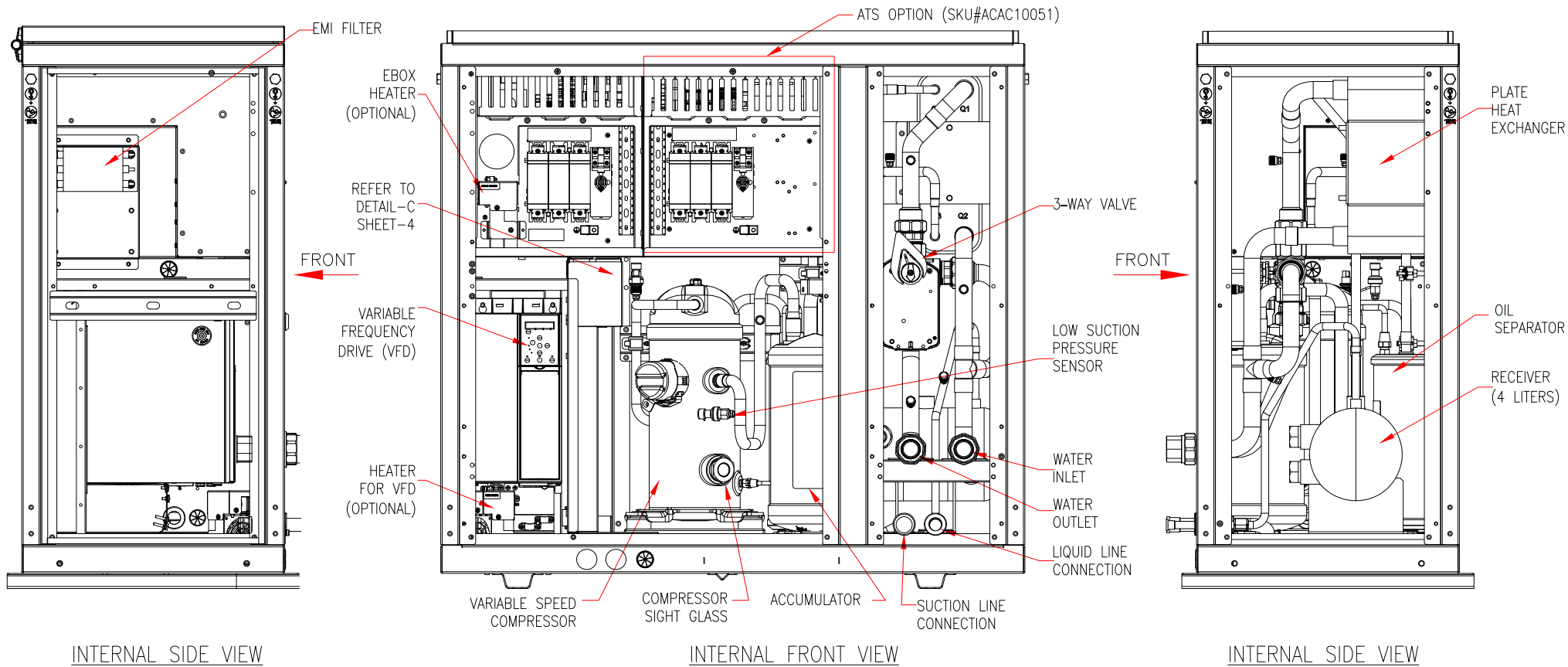
THIS DRAWING AND SPECIFICATIONS HEREIN ARE THE PROPERTY OF SCHNEIDER ELECTRIC AND SHALL NOT BE COPIED, REPRODUCED OR USED IN WHOLE OR IN PART, AS THE BASIS FOR THE MANUFACTURE OR SALE OF ITEMS WITHOUT WRITTEN PERMISSION FROM SCHNEIDER ELECTRIC. THIS DRAWING IS BASED UPON LATEST AVAILABLE INFORMATION AND IS SUBJECT TO CHANGE WITHOUT NOTICE.



TITLE: InRow DX 300mm
Hydronic Unit
3Ph 200-240V 50/60Hz Single Power UL
Ambient above 0°C
TOP -BOTTOM AND ANCHORING DETAILS
PROJECT: SUBMITTAL DRAWINGS SHEET 2 OF 4

DWG NO: ACHU300
DRAWN BY: BALA
ENGINEER: H YANG
APPROVED BY: H YANG

REV. 0
10-JUN-21
29-JUN-21
29-JUN-21
THIRD ANGLE PROJECTION

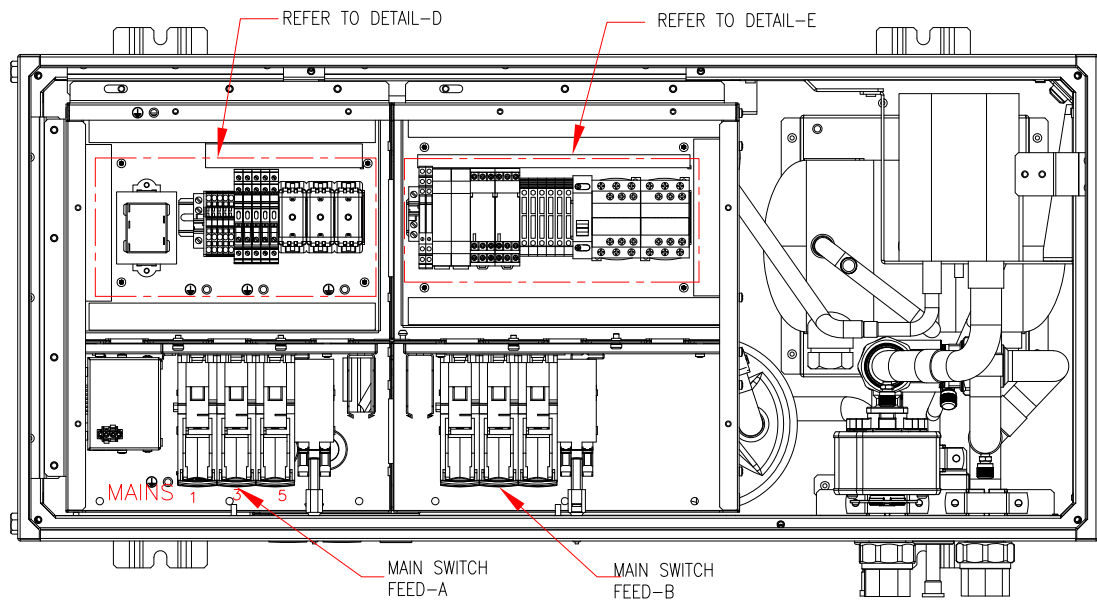


NOTES:

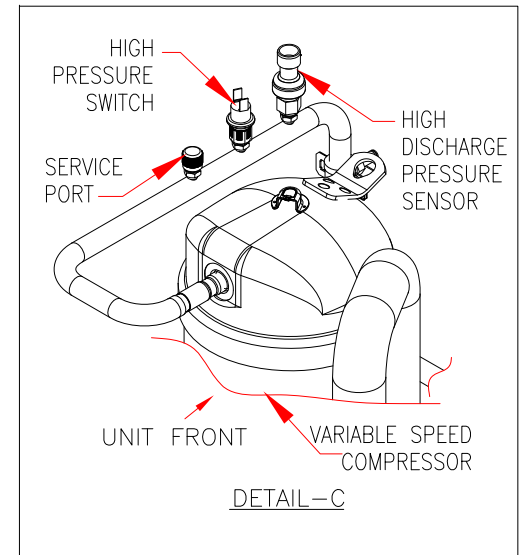
1. INSTALLATION SHALL COMPLY WITH ALL APPLICABLE NATIONAL, STATE AND LOCAL ELECTRICAL STANDARDS.
2. REFER TO PRODUCT DOCUMENTATION FOR ADDITIONAL DETAILS PRIOR TO INSTALLATION AND SITE PREPARATION WORK.
3. ALL DIMENSIONS ARE IN INCHES [MILLIMETERS].
4. SOME STRUCTURAL DETAILS BEEN OMITTED FOR THE PURPOSE OF CLARITY.

	TITLE: InRow DX 300mm Hydronic Unit 3Ph 200-240V 50/60Hz Single Power UL Ambient above 0°C INTERNAL VIEWS AND DETAILS		DWG NO: ACHU300		REV. 0	
	PROJECT: SUBMITTAL DRAWINGS		DRAWN BY: BALA	10-JUN-21	THIRD	
	SHEET 3 OF 4		ENGINEER: H YANG	29-JUN-21	ANGLE	PROJECTION
	APPROVED BY: H YANG					

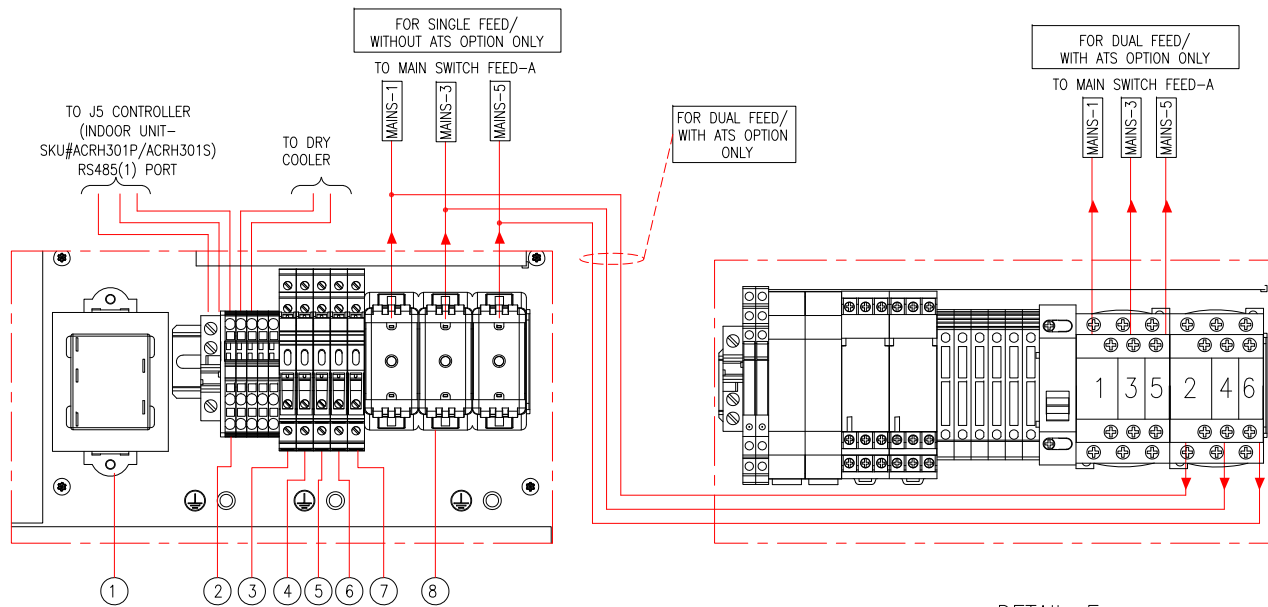
THIS DRAWING AND SPECIFICATIONS HEREIN ARE THE PROPERTY OF SCHNEIDER ELECTRIC AND SHALL NOT BE COPIED, REPRODUCED OR USED IN WHOLE OR IN PART, AS THE BASIS FOR THE MANUFACTURE OR SALE OF ITEMS WITHOUT WRITTEN PERMISSION FROM SCHNEIDER ELECTRIC. THIS DRAWING IS BASED UPON LATEST AVAILABLE INFORMATION AND IS SUBJECT TO CHANGE WITHOUT NOTICE.



INTERNAL TOP VIEW



DETAIL-C



DETAIL-D

DETAIL-E
(ATS OPTION- ACAC10051)

- | | |
|----|--|
| 1. | ACT TRANSFORMER |
| 2. | TERMINAL BLOCK |
| 3. | FLOODED KIT HEATER FUSE |
| 4. | E-BOX HEATER FUSE |
| 5. | CMP DRIVE HEATER FUSE |
| 6. | ACT TRANSFORMER FUSE |
| 7. | CCH FUSE |
| 8. | COMPRESSOR-VARIABLE SPEED DRIVE SWITCH |

NOTES:

1. INSTALLATION SHALL COMPLY WITH ALL APPLICABLE NATIONAL, STATE AND LOCAL ELECTRICAL STANDARDS.
2. REFER TO PRODUCT DOCUMENTATION FOR ADDITIONAL DETAILS PRIOR TO INSTALLATION AND SITE PREPARATION WORK.
3. SOME STRUCTURAL DETAILS BEEN OMITTED FOR THE PURPOSE OF CLARITY.

THIS DRAWING AND SPECIFICATIONS HEREIN ARE THE PROPERTY OF SCHNEIDER ELECTRIC AND SHALL NOT BE COPIED, REPRODUCED OR USED IN WHOLE OR IN PART, AS THE BASIS FOR THE MANUFACTURE OR SALE OF ITEMS WITHOUT WRITTEN PERMISSION FROM SCHNEIDER ELECTRIC. THIS DRAWING IS BASED UPON LATEST AVAILABLE INFORMATION AND IS SUBJECT TO CHANGE WITHOUT NOTICE.



TITLE: InRow DX 300mm
Hydronic Unit
3Ph 200-240V 50/60Hz Single Power UL
Ambient above 0°C
INTERNAL VIEWS AND INTERFACE DETAILS

DWG NO:	ACHU300		REV.	0
DRAWN BY:	BALA	10-JUN-21	THIRD	
ENGINEER:	H YANG	29-JUN-21	ANGLE	
APPROVED BY:	H YANG	29-JUN-21	PROJECTION	

PROJECT: SUBMITTAL DRAWINGS SHEET 4 OF 4