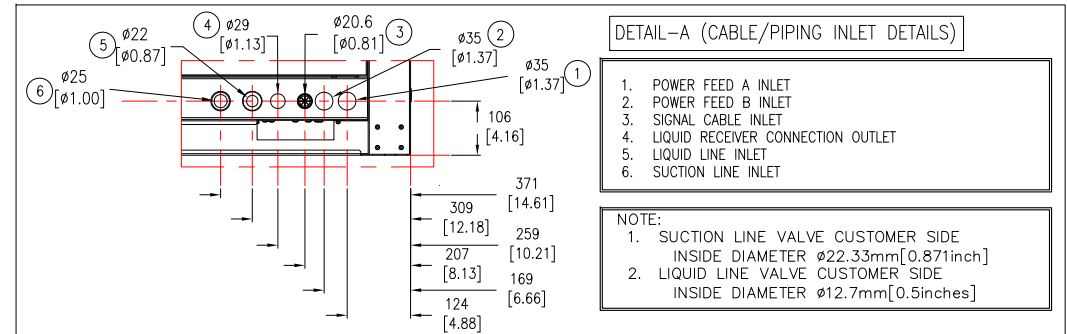


REFER TO DRAWING "ACAC75016-10049-FLOODED\_RECEIVER\_20L\_ASME\_WINTER ACCESSORIES", FOR BELOW OPTIONS.  
 ACAC75016-----Flooded Receiver, 20L, 219mm diameter, 640mm length, ASME with 200w heater  
 ACAC1049-----Winter Accessory Kit - Heaters, Brackets, Wiring TO USE WITH ACCU301D.

- NOTES:**
- INSTALLATION SHALL COMPLY WITH ALL APPLICABLE NATIONAL, STATE AND LOCAL ELECTRICAL STANDARDS.
  - REFER TO PRODUCT DOCUMENTATION FOR ADDITIONAL DETAILS PRIOR TO INSTALLATION AND SITE PREPARATION WORK.
  - ALL DIMENSIONS ARE IN MILLIMETERS [INCHES].
  - A MINIMUM OF 1000 [39] OF CLEAR SPACE ON ALL SIDES OF UNIT RECOMMENDED FOR SERVICE ACCESS. FOR PROPER AIRFLOW IT IS RECOMMENDED AT LEAST 3000[118]
  - POWER/SIGNAL CABLES/PIPE ENTRY FROM LOWER FRONT OF UNIT AS IN DETAIL-A.
  - FOR FACILITY PLANNING DATA. PERFORMANCE SPECIFICATIONS AND LIMIT WORKING CONDITIONS, REFER TO SHEET-2.
  - NET WEIGHT OF UNIT IS 272 kg [600 lb].
  - FLOOR LOADING DATA(CONCENTRATED STATIC LOAD): 2325 kg/m<sup>2</sup> [477 lb/ft<sup>2</sup>].  
FLOOR CONTACT AREA OF UNIT : 0.117m<sup>2</sup> / 1.259 ft<sup>2</sup>.
  - THIS INFORMATION PROVIDES APPROXIMATE CENTER OF GRAVITY CALCULATION.



THIS DRAWING AND SPECIFICATIONS HEREIN ARE THE PROPERTY OF SCHNEIDER ELECTRIC AND SHALL NOT BE COPIED, REPRODUCED OR USED IN WHOLE OR IN PART, AS THE BASIS FOR THE MANUFACTURE OR SALE OF ITEMS WITHOUT WRITTEN PERMISSION FROM SCHNEIDER ELECTRIC. THIS DRAWING IS BASED UPON LATEST AVAILABLE INFORMATION AND IS SUBJECT TO CHANGE WITHOUT NOTICE.



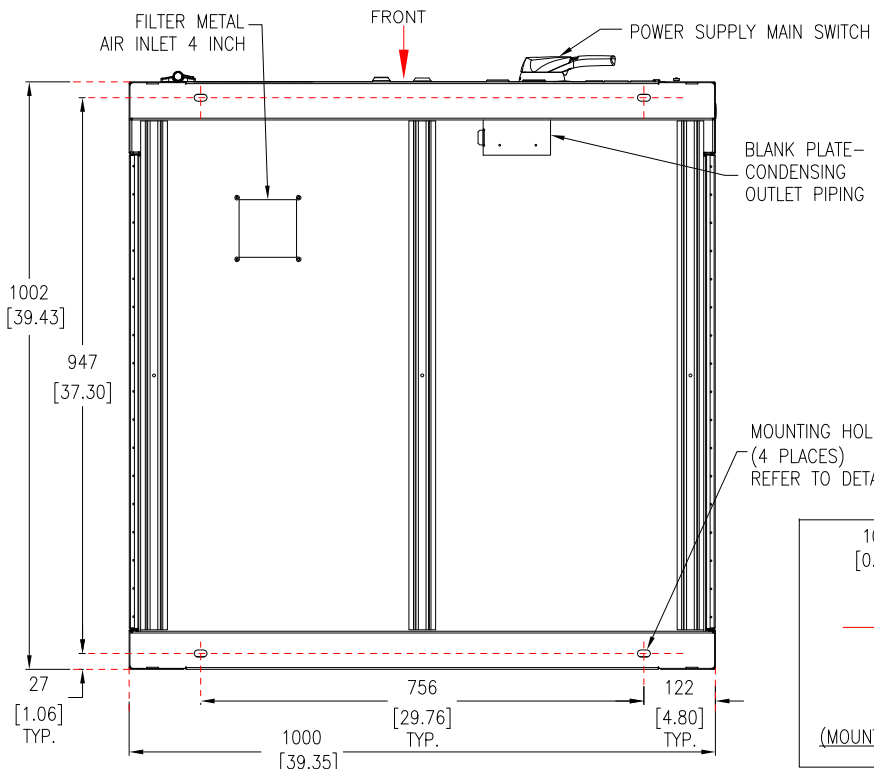
TITLE: InRow DIRECT EXPANSION CONDENSING UNIT  
 3PH 480V 50/60HZ DUAL POWER UL GENERAL ARRANGEMENT

PROJECT: SUBMITTAL DRAWINGS SHEET 1 OF 3

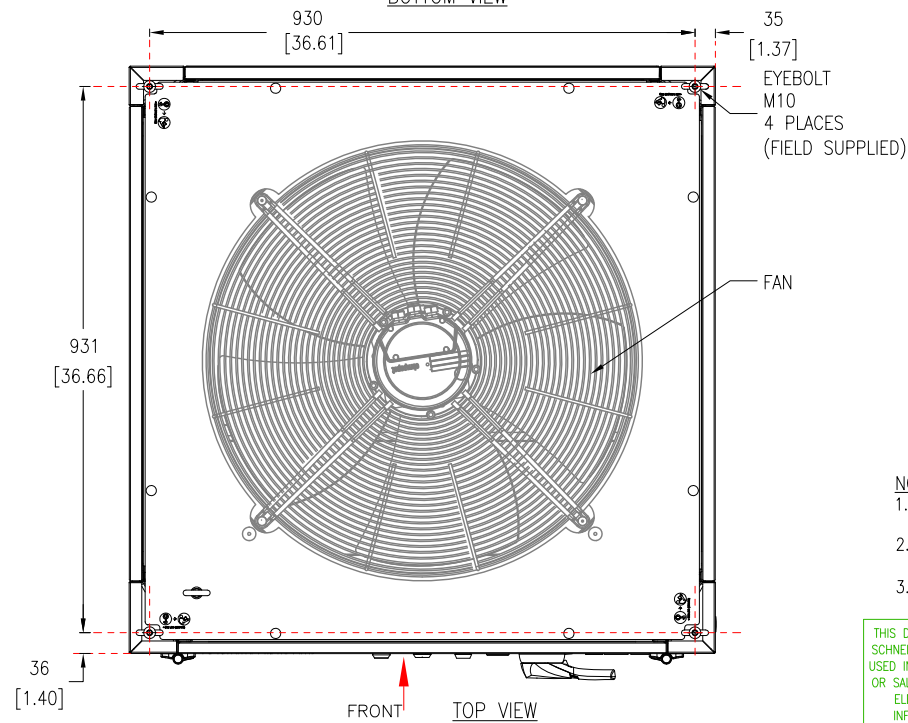
DWG NO: ACCU301D

|                            |           |
|----------------------------|-----------|
| DRAWN: BALA                | 29-SEP-20 |
| ENGINEER: RAAM C/Hongwei Y | 3-NOV-20  |
| APPROVED: RAAM C/Hongwei Y | 3-NOV-20  |

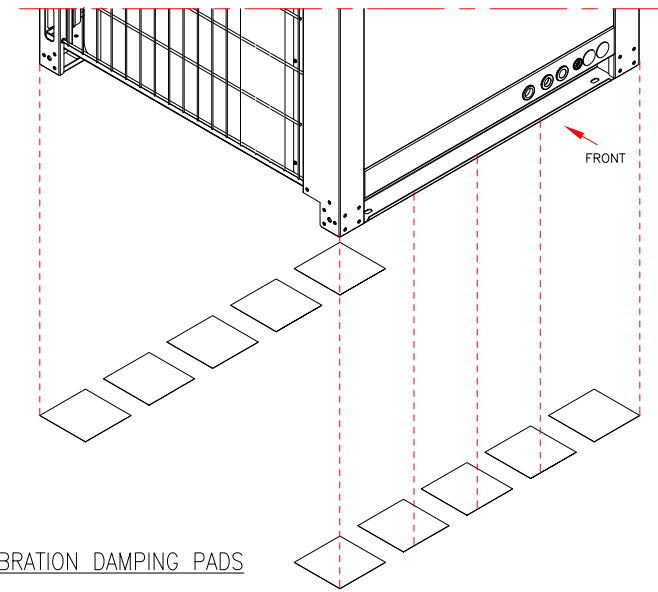
REV: 0  
 FIRST ANGLE PROJECTION



BOTTOM VIEW



TOP VIEW



VIBRATION DAMPING PADS

NOTE:

- IT IS RECOMMENDED TO PLACE FIELD-SUPPLIED VIBRATION DAMPING PADS UNDER THE OUTDOOR UNIT TO MINIMIZE VIBRATION AND NOISE.  
RECOMMENDED SPECIFICATIONS : HARDNESS : DUROMETER 90A || MATERIAL: GREEN NEOPRENE RUBBER  
DIMENSION : 152x152mm [6x6inch] || THICKNESS: 9.5mm[3/8inch]
- DO NOT BLOCK THE MOUNTING HOLES OF UNIT WITH THE DAMPING PADS.
- FOR DETAILED INSTALLATION REFER TO PRODUCT INSTALLATION MANUAL.

LIMIT WORKING CONDITIONS:

- REFRIGERANT TYPE : R410A
- OPERATING OUTDOOR TEMPERATURE:  
-40°C TO +46°C (-40°F TO +115°F)
- ALTITUDE : 3000 METERS (9843 FEET).

| PERFORMANCE SPECIFICATIONS                     |                                  |                         |
|--|----------------------------------|-------------------------|
| OPERATING CONDITIONS                           | SENSIBLE NET CAPACITY kW (BTU/h) | ENERGY EFFICIENCY (W/W) |
| GB19413  | 16.3 (55600)                     | 4.0 AEER                |
| ASHRAE 127 CLASS3                              | 25 (85300)                       | 3.2 SCOP                |
| MAXIMUM AT 35°C (95°F) RETURN AIR TEMPERATURE  | 27 (92100)                       | ---                     |
| MAXIMUM AT 40°C (104°F) RETURN AIR TEMPERATURE | 30 (102 400)                     | ---                     |

| FACILITY PLANNING DATA    |                           |
|---------------------------|---------------------------|
| ELECTRICAL INPUT          | 3 PH, 460-480 VAC 50/60Hz |
| POWER CONNECTION TYPE     | HARDWIRED                 |
| FULL LOAD AMPS (FLA)      | 15.8                      |
| POWER CONNECTION QUANTITY | 2                         |
| FEATURES/OPTIONS          |                           |
| FAN TYPE                  | ELECTRICALLY COMMUTATED   |
| FAN CONTROL               | RS485 Modbus RTU          |
| NUMBER OF FANS            | 1                         |
| HOT SWAPPABLE FANS        | NO                        |
| REFRIGERANT TYPE          | R410A                     |
| COMPRESSOR TYPE           | VARIABLE SPEED            |

NOTES:

- INSTALLATION SHALL COMPLY WITH ALL APPLICABLE NATIONAL, STATE AND LOCAL ELECTRICAL STANDARDS.
- REFER TO PRODUCT DOCUMENTATION FOR ADDITIONAL DETAILS PRIOR TO INSTALLATION AND SITE PREPARATION WORK.
- ALL DIMENSIONS ARE IN MILLIMETERS [INCHES].

THIS DRAWING AND SPECIFICATIONS HEREIN ARE THE PROPERTY OF SCHNEIDER ELECTRIC AND SHALL NOT BE COPIED, REPRODUCED OR USED IN WHOLE OR IN PART, AS THE BASIS FOR THE MANUFACTURE OR SALE OF ITEMS WITHOUT WRITTEN PERMISSION FROM SCHNEIDER ELECTRIC. THIS DRAWING IS BASED UPON LATEST AVAILABLE INFORMATION AND IS SUBJECT TO CHANGE WITHOUT NOTICE.



TITLE: InRow DIRECT EXPANSION CONDENSING UNIT  
3PH 480V 50/60Hz DUAL POWER UL  
TOP-BOTTOM VIEWS AND ANCHORING DETAILS

DWG NO: ACCU301D

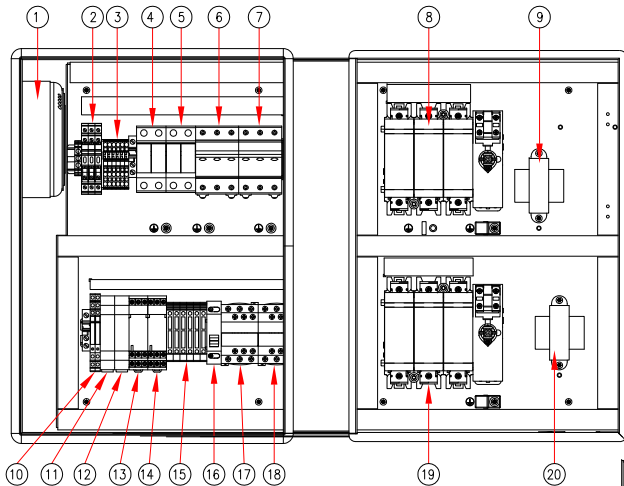
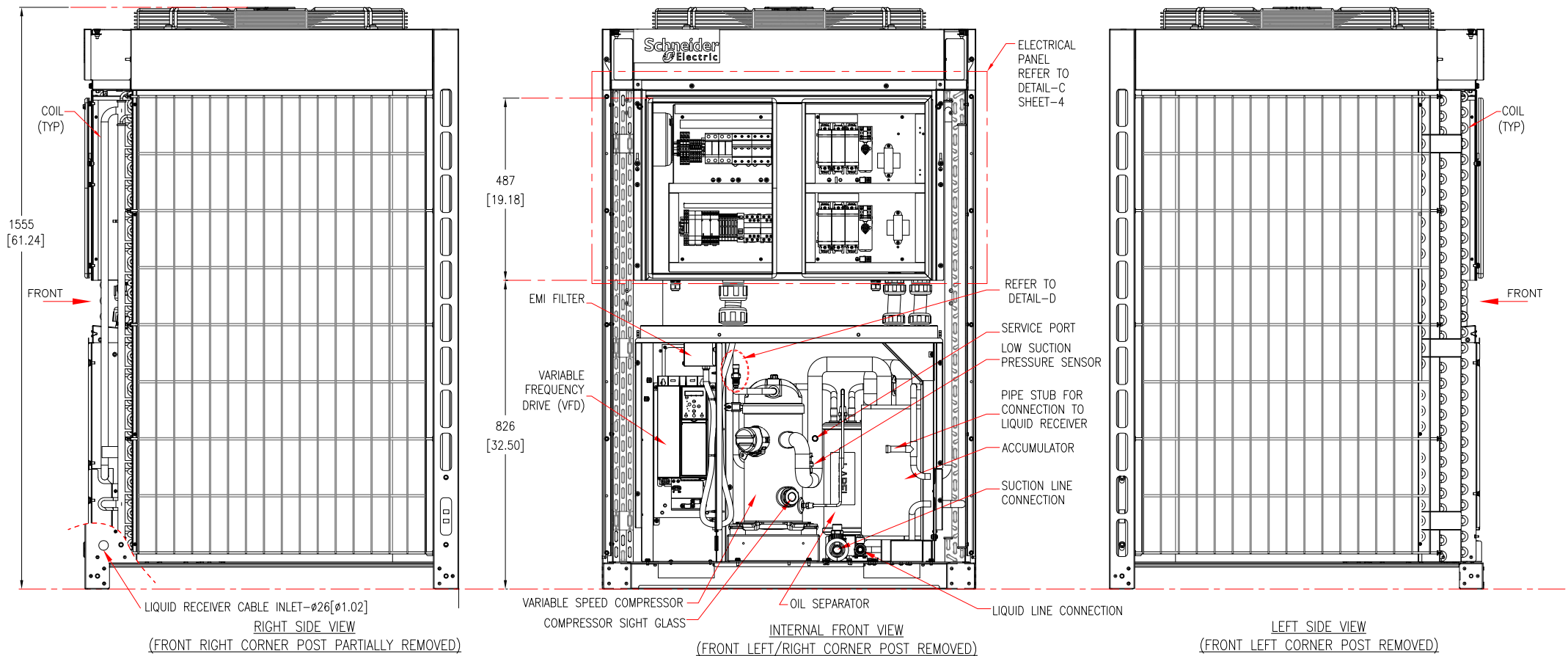
REV: 0

DRAWN: BALA 29-SEP-20  
ENGINEER: RAAM C/Hongwei Y 3-NOV-20

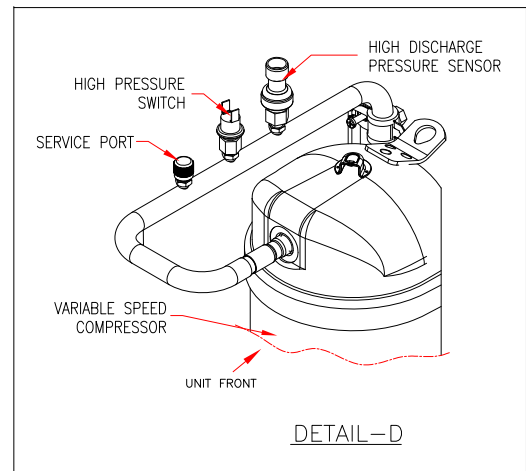
FIRST ANGLE PROJECTION

PROJECT: SUBMITTAL DRAWINGS SHEET 2 OF 3

APPROVED: RAAM C/Hongwei Y 3-NOV-20



1. CRANK CASE HEATER POWER TRANSFORMER
2. LOW TEMPERATURE KIT FUSE BLOCK
3. TERMINAL BLOCK
4. CRANK CASE HEATER FUSE
5. CRANK CASE HEATER POWER TRANSFORMER FUSE
6. FAN MOTOR FUSE
7. COMPRESSOR VARIABLE-SPEED DRIVE FUSE
8. POWER SUPPLY "A" MAIN SWITCH
9. ATS SUPPLY "A" POWER TRANSFORMER
10. SUPPLY LINE SELECTOR RELAY
11. SUPPLY "A" LINE MONITOR
12. SUPPLY "B" LINE MONITOR
13. SUPPLY "A" CONTACTOR TIMER
14. SUPPLY "B" CONTACTOR TIMER
15. ATS CIRCUIT FUSE
16. SUPPLY LINE SELECTOR "A"/"B"
17. SUPPLY "A" CONTACTOR
18. SUPPLY "B" CONTACTOR
19. POWER SUPPLY "B" MAIN SWITCH
20. ATS SUPPLY "B" POWER TRANSFORMER



- NOTES:**
1. INSTALLATION SHALL COMPLY WITH ALL APPLICABLE NATIONAL, STATE AND LOCAL ELECTRICAL STANDARDS.
  2. REFER TO PRODUCT DOCUMENTATION FOR ADDITIONAL DETAILS PRIOR TO INSTALLATION AND SITE PREPARATION WORK.
  3. ALL DIMENSIONS ARE IN MILLIMETERS [INCHES].
  4. SOME STRUCTURAL DETAILS BEEN OMITTED FOR THE PURPOSE OF CLARITY.

THIS DRAWING AND SPECIFICATIONS HEREIN ARE THE PROPERTY OF SCHNEIDER ELECTRIC AND SHALL NOT BE COPIED, REPRODUCED OR USED IN WHOLE OR IN PART, AS THE BASIS FOR THE MANUFACTURE OR SALE OF ITEMS WITHOUT WRITTEN PERMISSION FROM SCHNEIDER ELECTRIC. THIS DRAWING IS BASED UPON LATEST AVAILABLE INFORMATION AND IS SUBJECT TO CHANGE WITHOUT NOTICE.



TITLE: InRow DIRECT EXPANSION CONDENSING UNIT  
3PH 480V 50/60Hz DUAL POWER UL INTERNAL VIEWS

PROJECT: SUBMITTAL DRAWINGS SHEET 3 OF 3

DWG NO: ACCU301D  
DRAWN: BALA 29-SEP-20  
ENGINEER: RAAM C/Hongwei Y 3-NOV-20  
APPROVED: RAAM C/Hongwei Y 3-NOV-20

REV: 0  
FIRST ANGLE PROJECTION