

THIS DRAWING IS APPLICABLE FOR BELOW OPTIONAL SKUs

1. ACAC75016 –
Flooded Receiver, 20L, 219mm diameter, 640mm length, ASME with 200w heater.
2. ACAC10049 –
WINTER ACCESSORY KIT – HEATERS, BRACKETS, WIRING

ACCU30x InRow DIRECT EXPANSION CONDENSING UNIT SHOWN FOR INSTALLATION REPRESENTATION ONLY. FOR DETAILS ABOUT ACCU30x REFER TO THE RESPECTIVE SUBMITTAL DRAWINGS .

WINTER ACCESSORY KIT (OPTIONAL SKU# ACAC10049)

1. ELECTRICAL PANEL HEATER
2. LIQUID RECEIVER MOUNTING BRACKET
3. PIPE REDUCER 7/8 INCH TO 1/2 INCH
4. PIPE REDUCER 7/8 INCH TO 5/8 INCH
5. VFD HEATER

FLOODED RECEIVER ASME KIT (OPTIONAL SKU# ACAC75017)

6. SAFETY VALVE 42 BAR DN 3/4x3/4 INCH
7. BALL VALVE 7/8 INCH
8. FLOODED RECEIVER
9. SIGHT GLASS (3 PLACES)
10. LIQUID RECEIVER CABLE CONDUIT
11. HEAD PRESSURE VALVE SENSOR
12. HEAD PRESSURE VALVE AND CHECK VALVE

FIELD SUPPLIED ITEMS

13. LIQUID RECEIVER CONNECTION OUTLET PIPE
14. LIQUID LINE INLET PIPE
15. BEND PIPE

SHOWN FOR ILLUSTRATION PURPOSE ONLY

16. InRow DX CONDENSING UNIT (TYPICAL)
(SHOWN FOR REFERENCE-TYPICAL FOR SKUs
ACCU300, ACCU300D, ACCU301 AND ACCU301D)

NOTES:

1. INSTALLATION SHALL COMPLY WITH ALL APPLICABLE NATIONAL, STATE AND LOCAL ELECTRICAL STANDARDS.
2. REFER TO PRODUCT DOCUMENTATION FOR ADDITIONAL DETAILS PRIOR TO INSTALLATION AND SITE PREPARATION WORK.

THIS DRAWING AND SPECIFICATIONS HEREIN ARE THE PROPERTY OF SCHNEIDER ELECTRIC AND SHALL NOT BE COPIED, REPRODUCED OR USED IN WHOLE OR IN PART, AS THE BASIS FOR THE MANUFACTURE OR SALE OF ITEMS WITHOUT WRITTEN PERMISSION FROM SCHNEIDER ELECTRIC. THIS DRAWING IS BASED UPON LATEST AVAILABLE INFORMATION AND IS SUBJECT TO CHANGE WITHOUT NOTICE.

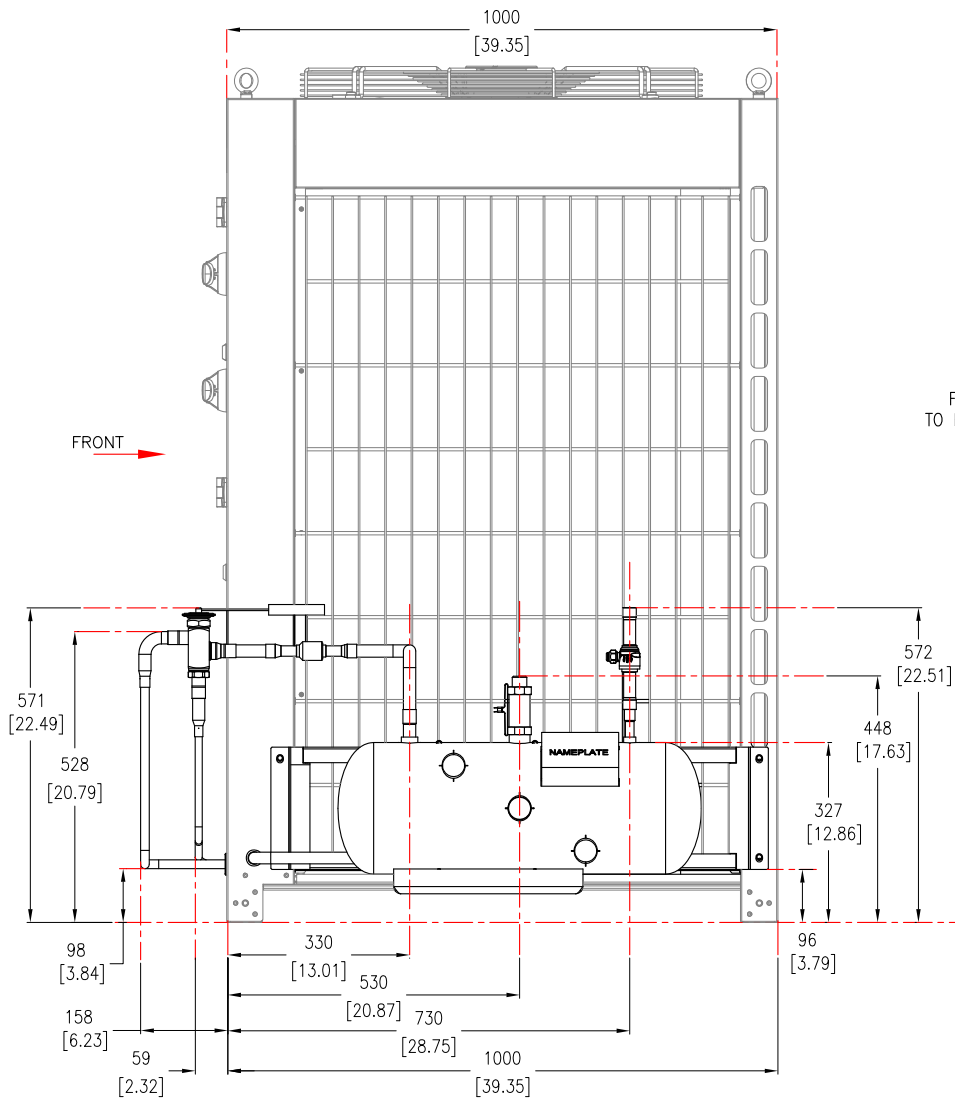
**Schneider
Electric**

TITLE: InRow DIRECT EXPANSION
OPTIONS : ACAC75016 – ACAC10049
FLOODED RECEIVER, 20L, 219mm DIA, 640mm LENGTH
ASME WITH 200w HEATER /
WINTER ACCESSORY KIT- ISOMETRIC VIEW

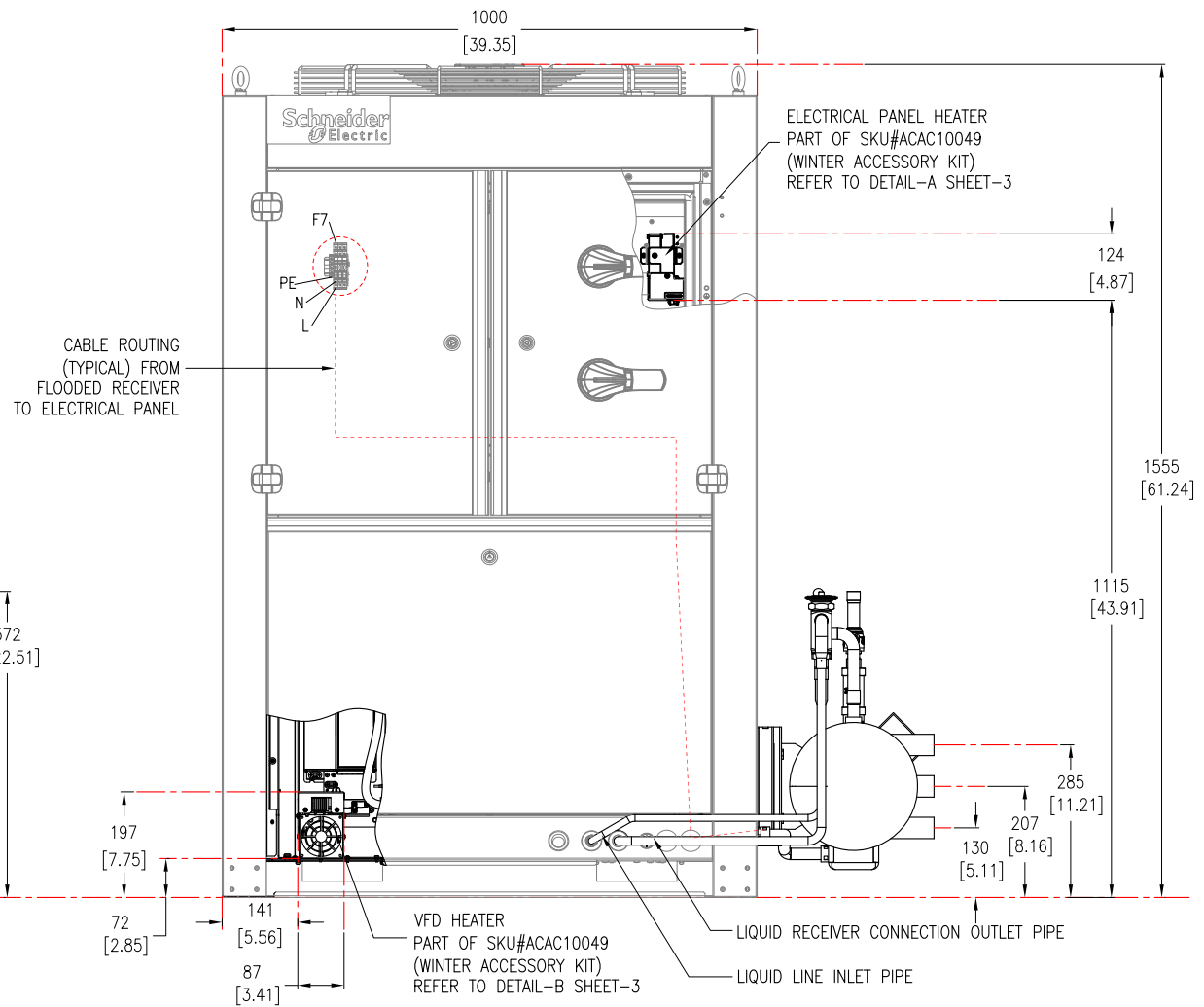
DWG NO: ACAC75016-10049

REV: 0

DRAWN:	BALA	16-OCT-20	FIRST
ENGINEER:	RAAM C/Hongwei Y	3-NOV-20	ANGLE
APPROVED:	RAAM C/Hongwei Y	3-NOV-20	PROJECTION
PROJECT: SUBMITTAL DRAWINGS	SHEET 1 OF 3		



RIGHT HAND SIDE VIEW



FRONT VIEW

NOTES:

1. INSTALLATION SHALL COMPLY WITH ALL APPLICABLE NATIONAL, STATE AND LOCAL ELECTRICAL STANDARDS.
2. REFER TO PRODUCT DOCUMENTATION FOR ADDITIONAL DETAILS PRIOR TO INSTALLATION AND SITE PREPARATION WORK.
3. ALL DIMENSIONS ARE IN MILLIMETERS [INCHES].

THIS DRAWING AND SPECIFICATIONS HEREIN ARE THE PROPERTY OF SCHNEIDER ELECTRIC AND SHALL NOT BE COPIED, REPRODUCED OR USED IN WHOLE OR IN PART, AS THE BASIS FOR THE MANUFACTURE OR SALE OF ITEMS WITHOUT WRITTEN PERMISSION FROM SCHNEIDER ELECTRIC. THIS DRAWING IS BASED UPON LATEST AVAILABLE INFORMATION AND IS SUBJECT TO CHANGE WITHOUT NOTICE.



TITLE: InRow DIRECT EXPANSION
 OPTIONS : ACAC75016 - ACAC10049
 FLOODED RECEIVER, 20L, 219mm DIA, 640mm LENGTH
 ASME WITH 200w HEATER /
 WINTER ACCESSORY KIT-FRONT /REAR VIEWS

DWG NO: ACAC75016-10049

REV: 0

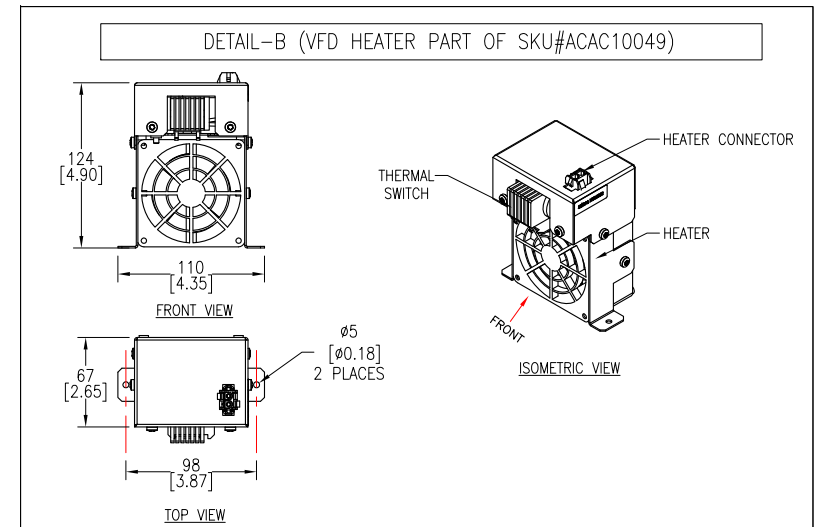
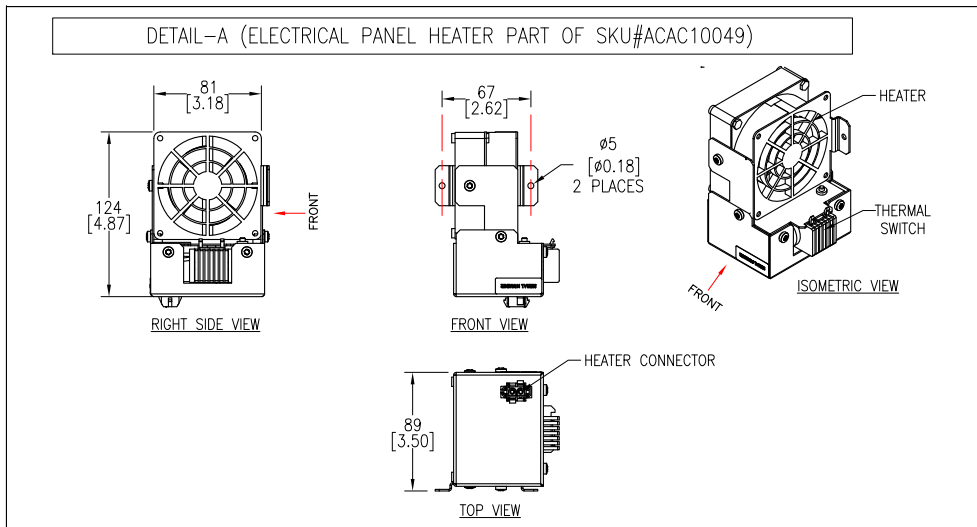
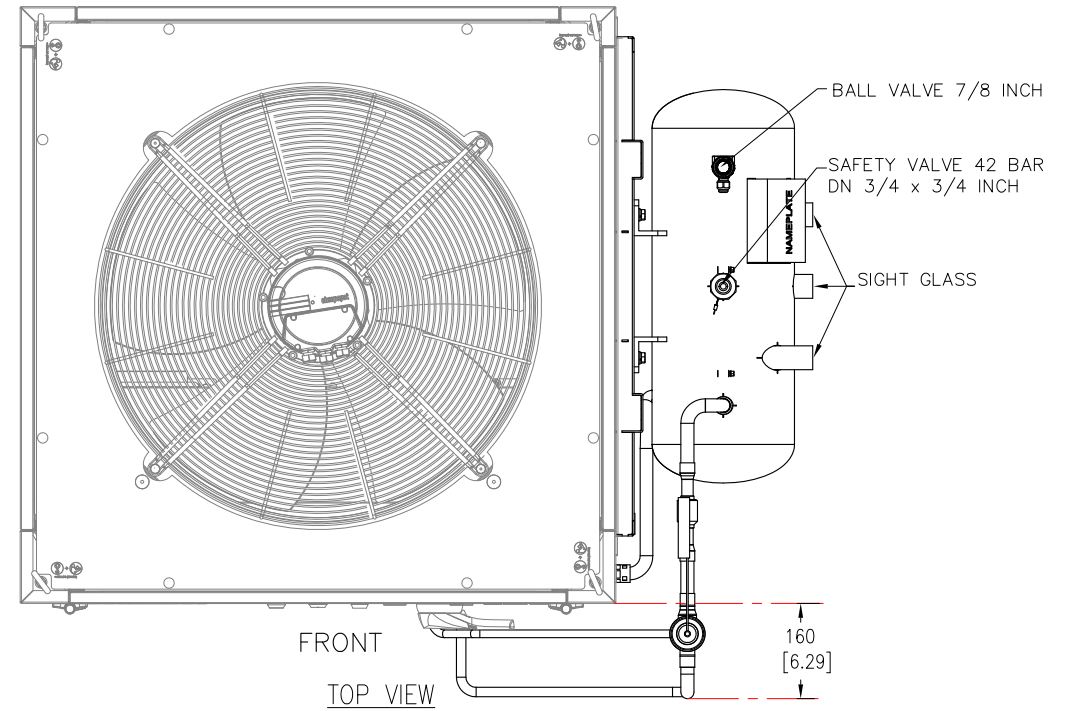
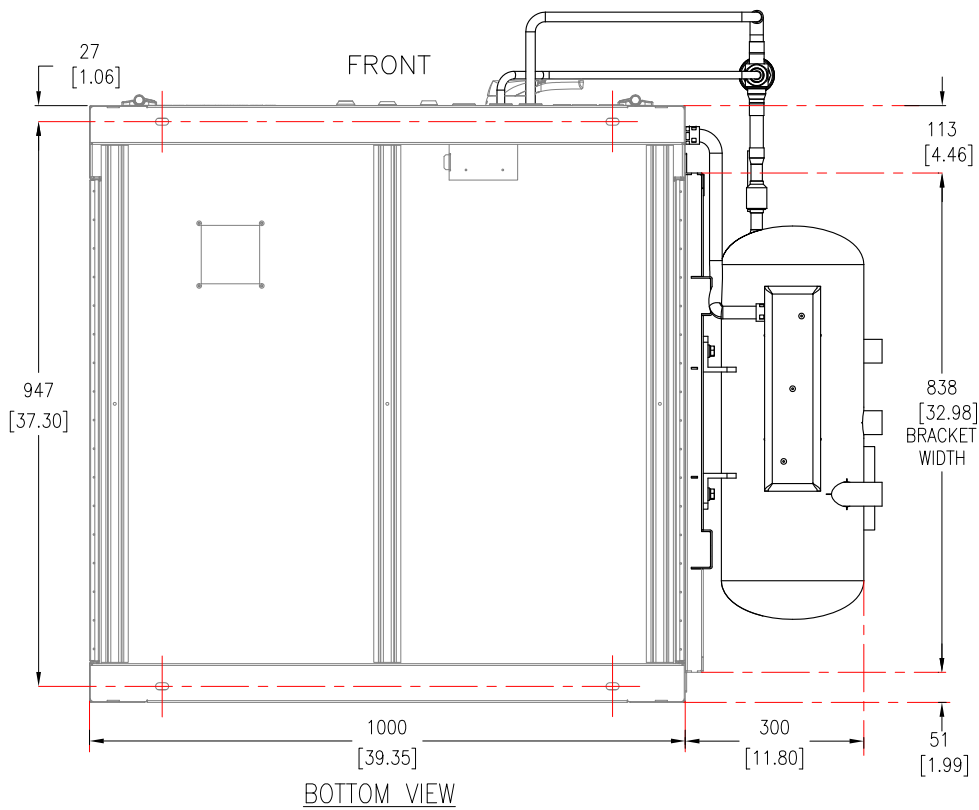
DRAWN: BALA 16-OCT-20

FIRST ANGLE PROJECTION

ENGINEER: RAAM C/Hongwei Y 3-NOV-20

APPROVED: RAAM C/Hongwei Y 3-NOV-20

PROJECT: SUBMITTAL DRAWINGS SHEET 2 OF 3



NOTES:

1. INSTALLATION SHALL COMPLY WITH ALL APPLICABLE NATIONAL, STATE AND LOCAL ELECTRICAL STANDARDS.
2. REFER TO PRODUCT DOCUMENTATION FOR ADDITIONAL DETAILS PRIOR TO INSTALLATION AND SITE PREPARATION WORK.
3. ALL DIMENSIONS ARE IN MILLIMETERS [INCHES].

THIS DRAWING AND SPECIFICATIONS HEREIN ARE THE PROPERTY OF SCHNEIDER ELECTRIC AND SHALL NOT BE COPIED, REPRODUCED OR USED IN WHOLE OR IN PART, AS THE BASIS FOR THE MANUFACTURE OR SALE OF ITEMS WITHOUT WRITTEN PERMISSION FROM SCHNEIDER ELECTRIC. THIS DRAWING IS BASED UPON LATEST AVAILABLE INFORMATION AND IS SUBJECT TO CHANGE WITHOUT NOTICE.

Schneider Electric

TITLE: InRow DIRECT EXPANSION
 OPTIONS : ACAC75016 - ACAC10049
 FLOODED RECEIVER, 20L, 219mm DIA, 640mm LENGTH
 ASME WITH 200w HEATER /
 WINTER ACCESSORY KIT-TOP/BOTTOM VIEWS

DWG NO: ACAC75016-10049

REV 0

DRAWN: BALA 16-OCT-20

ENGINEER: RAAM C/Hongwei Y 3-NOV-20

APPROVED: RAAM C/Hongwei Y 3-NOV-20

PROJECT: SUBMITTAL DRAWINGS SHEET 3 OF 3

FIRST ANGLE PROJECTION