

Multistandard offer for OEM applications

Single solution source for business without borders



Schneider
Electric



Improving customer satisfaction means producing industrial machines that are compliant to international standards, more efficient, and cost-effective for clients worldwide.

Now, more than ever, your choice for automation and power solutions is a key factor in developing enhanced processes at every step, from design and development to implementation and maintenance.

Schneider Electric multistandard offer: solutions you can trust

Schneider Electric helps you meet all global standards for industrial machinery applications with the multistandard offer for international OEMs.

> Install and relax

A single solution that meets your needs and global standards. That's our multistandard offer for OEMs.

Our circuit breakers (CBs) and motor control units are designed to meet your needs. Deploy them for all your applications — they're ready to go. Maintenance is minimal, but our support teams are available 24/7.

> You order; we ship

All our multistandard product offers have a single global part number, for simple, at-a-glance selections.

Simplicity starts with full availability. You order. We ship, worldwide.

> Quick customization

Safety, reliability, high-performance, and peace of mind.

Our rugged enclosures are designed to be assembled quickly and are customizable. Build your circuit protection solutions with Schneider Electric products and you'll have access to affordable design and engineering expertise.



**Simple.
Worldwide.
One solution fits all.**

The one-stop shop that supplies, applies, complies

Trust Schneider Electric to give you that competitive edge over your competitors. Make us your partner as you take on new export markets.

Trust us ...

> to supply

For your circuit breakers, motor starters, and enclosures, look no further than Schneider Electric. We are worldwide. Make us your one-stop shop.

> to apply

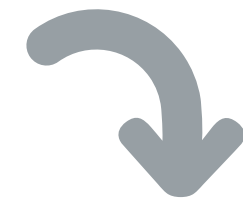
Our solutions come to you tested and validated specifically for your application.

> to comply

Using UL, IEC, CCC, or CSA, our multistandard offer will comply and set a new standard of reliability and high performance.

UL conformity — peace of mind certified

North America's UL is a wide-ranging product safety standard. Its certification program is complex and demanding. Schneider Electric has a team of experts who can help OEMs design panelboards to UL standards. They can guide you or co-engineer a comprehensive solution with you. Peace of mind certified.



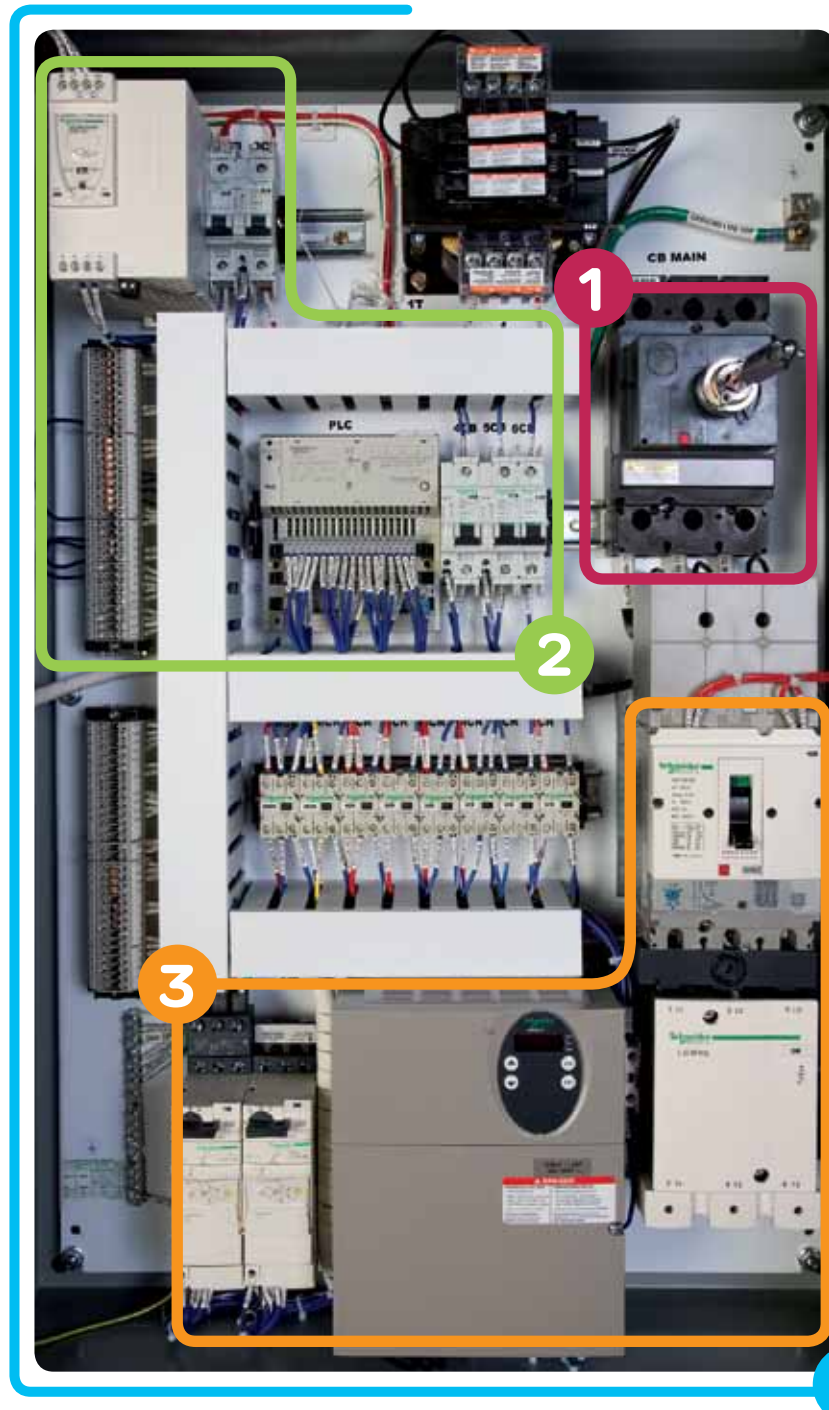
**Wherever you are,
we are too.**

**Whatever you do,
we help you do it.**





Multistandard control panels are your best solution



- 1 Feeder protection and circuit disconnect solutions
- 2 Branch circuit and control circuit protection
- 3 Motor load protection and control
- 4 Enclosures

Regardless of a control panel's industrial application, its protection systems and devices must comply with applicable international standards:

- IEC 60-204 safety of machinery
- UL 508A industrial control panel

They should also comply with Europe's CE mark, China's CCC mark, and Canada's CSA standard. Components and component combinations that meet multiple standards are equally important to design and size to help ensure that control panels meet legal requirements across international markets.



The Schneider Electric multistandard offer for OEMs is a range of customizable protection solutions which you can trust to meet your needs and your customers' standards.

Our solutions have proven themselves in markets and industrial applications worldwide; they answer diverse machine applications needs spanning automation devices, elevators, hoists, lift trucks, bottling plants, ships, control systems, and more.

Whatever your selection, you select peace of mind.



> **A truly comprehensive range of feeder protection and circuit disconnect solutions**
Our PowerPact™ CBs boast unrivaled reliability for heavy-duty applications while our TeSys™ Vario is designed for on-load circuit breaking.

> **Compact, cost-effective motor load protection and control**
Our direct online (DOL) starters and variable speed drive starters are easy to run and install. They need no upstream branch circuit.

> **Renowned, multiple-mount miniature circuit breakers**
Our miniature circuit breakers are big on safety, versatility, and trip speeds. They bring high breaking capacity to your heat and light systems.

> **Enclosures for cool, safe equipment**
Our enclosures help protect in the roughest, toughest environments and keep your equipment cool.

1 Feeder protection and circuit disconnection

PowerPact multistandard molded case circuit breakers



> Proven performance

Industry-leading circuit breaker innovation and protection for heavy-duty commercial and industrial applications.

> Flexible

Full range of molded case circuit breakers from 15 A to 3,000 A deliver the ratings, configurations, and operations for your unique application.

> Simple

Common catalog numbers, standardized ratings, and a full range of field-installable accessories make product selection, installation, and maintenance easier than ever.

> Direct access to energy efficiency

Micrologic™ electronic trip units enable power and energy management.

PowerPact	HD	HG	HJ	JD	JG	JJ	LD	LG	LJ
Number of poles	3	3	3	3	3	3	3	3	3
Current range	15 – 150	15 – 150	15 – 150	60 – 250	60 – 250	60 – 250	250 – 600	250 – 600	250 – 600

Breaker type

Number of poles

Current range

Interrupting Ratings

UL/CSA/NOM rating (kA RMS) (50/60 Hz AC)	240 VAC	25	65	100	25	65	100	25	65	100
	480 Y/277 VAC
	480 VAC	18	35	65	18	35	65	18	35	65
	600 Y/347 VAC
	600 VAC	14	18	25	14	18	25	14	18	25
DC ratings	250 VDC	20	20	20	20	20	20
	500 VDC	20
IEC 60947-2 kA RMS (50/60 Hz AC) Icu/Ics	220/240 VAC	25/25	65/65	100/100	25/25	65/65	100/100	25/25	65/65	100/100
	380/415 VAC	18/18	35/35	65/65	18/18	35/35	65/65	18/18	35/35	65/65

Accessories

Shunt Trip	•	•	•	•	•	•	•	•	•	•
Undervoltage Trip	•	•	•	•	•	•	•	•	•	•
Auxiliary Switches	•	•	•	•	•	•	•	•	•	•
Handle Operators	•	•	•	•	•	•	•	•	•	•
Mechanical Interlocks	•	•	•	•	•	•	•	•	•	•
Handle Padlock Attachment	•	•	•	•	•	•	•	•	•	•

Trip System Type

Thermal magnetic	•	•	•	•	•	•	•	•	•	•
Electronic	•	•	•	•	•	•	•	•	•	•

Enclosure

Dimensions (three-pole unit mount)	Height mm (in.)	163 (6.4)	191 (7.5)	340 (13.38)
	Width mm (in.)	104 (4.1)	104 (4.1)	140 (5.51)
	Depth mm (in.)	111 (4.4)	127 (5.0)	168 (6.61)



TeSys Vario IEC 947-3/UL 508 load break switch

This switch is marked "Suitable as Motor Disconnect" allowing installation on the load side of the motor branch circuit, short-circuit, and ground-fault protection.

TeSys Vario rotary switch disconnectors from 10 to 115 A UL (12 to 175 A IEC) are suitable for the on-load making and breaking of resistive or mixed resistive and inductive circuits where frequent operation is required.

2 Branch circuit and control circuit protection

Multi 9 miniature circuit breakers



In addition to the PowerPact molded case circuit breakers offer, IEC 947-2/UL 489 miniature circuit breakers and UL 248 fuses should be used to protect loads like power transformers, the power supply, appliances, and heating and lighting.

Multi 9™ C60 miniature circuit breakers are the first extensive range of DIN rail-mounted miniature circuit breakers to be UL 489 listed for branch circuit protection.

Other Multi 9 devices are UL recognized as supplementary protectors suitable for applications where branch circuit protection is already provided or not required. Multi 9 C60 products also have IEC ratings. Other IEC-rated products complement the UL line up to 125 A at up to 440 VAC.

UL 489 C60 (120/240 V)			UL 489 C60 (480 Y/277 VAC)			UL 1077 C60N			UL 1077 C60H-DC	
1	2	3	1	2	3	1	2	3.4	1	2
0.5 – 35	0.5 – 35	0.5 – 35	0.5 – 20	1 – 20	0.5 – 20	0.5 – 63	0.5 – 63	0.5 – 63	0.5 – 40	0.5 – 40

Breaker type

Number of poles

Current range

Interrupting Ratings

UL/CSA rating (kA RMS) (50/60 Hz AC)	UL 489 C60 (120/240 V)			UL 489 C60 (480 Y/277 VAC)			UL 1077 C60N			UL 1077 C60H-DC	
	1	2	3	1	2	3	1	2	3.4	1	2
120 VAC	10	10	10
240 VAC	10	10	10	10	10	10	10	10	10
277 VAC	10	10	10	5
480 Y/277 VAC	10	10	...	5	5
DC ratings	48 VDC	5	5
60 VDC	10	10	5	5
65 VDC	10	5	5
125 VDC	...	10	10	...	5	5
250 VDC	5	5
500 VDC	5
IEC 60947-2 (50/60 Hz AC)	240 V	10	20	20	10	10	10	20	20	15	30
415 V	10	10	10	10	10	10	3	10	10	4	15
440 V	...	6	6	...	6	6	...	6	6	...	10

Accessories

Shunt Trip	•	•	•	•	•	•	•	•	•	•	•
Undervoltage Trip	•	•	•	•	•	•	•	•	•	•	•
Auxiliary Switches	•	•	•	•	•	•	•	•	•	•	•
Handle Operators	•	•	•	•	•	•	•	•	•	•	•
Handle Padlock Attachment	•	•	•	•	•	•	•	•	•	•	•
GF Protection (GFP)	•	•	•	•	•	•	•	•	•	•	•

Enclosures

Dimensions (three-pole unit mount)	UL 489 C60 (120/240 V)			UL 489 C60 (480 Y/277 VAC)			UL 1077 C60N			UL 1077 C60H-DC		
	Height mm (in.)	107 (4.21) (box lug)			141 (5.55)			81.02 (3.19)			81 (3.19)	
	Width mm (in.)	54 (2.13)			54 (2.13)			54 (2.13)			18 (.71)	36 (1.42)
Depth mm (in.)	76 (3.00)			76 (3.00)			76 (3.00)			65 (2.56)		



TeSys DF IEC 947-3/UL 248 fuse holders

UL 512		
DFCC	IEC UL (UL listed)	These devices are rated 600 Volts AC, maximum: <ul style="list-style-type: none"> 30 amperes 200 kA current withstand
DF10	IEC UL (UL recognized)	These devices are rated 690 Volts AC, maximum: <ul style="list-style-type: none"> 32 amperes 200 kA current withstand
DF14	IEC UL (UL recognized)	These devices are rated 690 Volts AC, maximum: <ul style="list-style-type: none"> 50 amperes 200 kA current withstand
DF22	IEC UL (UL recognized)	These devices are rated 690 Volts AC, maximum: <ul style="list-style-type: none"> 125 amperes 200 kA current withstand



3 Motor load protection and control



Direct online starter



There are several solutions for individual circuit motor loads (whether direct online or drive starters).

The most efficient are IEC 947-4-1/UL 508 Type E or Type F self-protected and manual self-protected combination motor controllers.

These combinations are built on multistandard components. They are demonstrably the most compact, the safest, and the most reliable solution for protecting and controlling motors.

They can be implemented on DOL starters and variable speed drive starters and do not require any upstream branch circuit protection device.



Find all information about tested, validated architectures in our "TeSys Motor Starter Solutions for the North American Market" brochure. (Data Bulletin 8536DB0901)

TeSys GV2P, in combination with line spacer GV2GH7 for standalone starter, or with GV1G09 and GV2G. Busbars for multiple starters — File UL E164871. Type E and F ratings are only valid on 480 Y/277 V and lower systems.

Maximum Horsepower Ratings						Associated cable Type 75 °C-Cu	Type of manual self-protected starter	Thermal setting (A)	Type of contactor required	SCCR (kA) 480 Y/277 V
1Ø		3Ø								
120 V	240 V	200 V	240 V	480 V	600 V					
...	AWG10	GV2P01	0.1 – 0.16	LC1D09 or D12	100
...	AWG10	GV2P02	0.16 – 0.25	LC1D09 or D12	100
...	AWG10	GV2P03	0.25 – 0.4	LC1D09 or D12	100
...	AWG10	GV2P04	0.4 – 0.63	LC1D09 or D12	100
...	0.5	AWG10	GV2P05	0.63 – 1	LC1D09 or D12	100
...	1/10	0.75	0.75	AWG10	GV2P06	1 – 1.6	LC1D09 or D12	100
...	1/6	0.5	0.5	1	1.5	AWG10	GV2P07	1.6 – 2.5	LC1D09 or D12	100
1/8	1/3	0.75	0.75	2	3	AWG10	GV2P08	2.5 – 4	LC1D09 or D12	100
0.25	0.5	1	1.5	3	5	AWG10	GV2P10	4 – 6.3	LC1D09 or D12	100
0.5	1.5	2	3	5	7.5	AWG10	GV2P14	6 – 10	LC1D09 or D12	100
0.75	2	3	3	10	10	AWG8	GV2P16	9 – 14	LC1D12 or D18	42
1	3	5	5	10	15	AWG8	GV2P20	13 – 18	LC1D12 or D18	42
1.5	3	5	7.5	15	20	AWG6	GV2P21	17 – 23	LC1D25 or D32	42
2	...	7.5	7.5	15	20	AWG6	GV2P22	20 – 25	LC1D25 or D32	42

TeSys GV3P, in combination with line spacer GV3G66 and GVAM11 (magnetic trip unit) for standalone starter – File UL E164871.

Maximum Horsepower Ratings						Associated cable Type 75 °C-Cu	Type of manual self-protected starter	Thermal setting (A)	Type of contactor required	SCCR (kA) 480 Y/277 V	SCCR (kA) 600 Y/347 V
1Ø		3Ø									
120 V	240 V	200 V	240 V	480 V	600 V						
0.5	1.5	3	3	7.5	10	AWG8	GV3P13	9 – 13	LC1D18	65	25
0.75	2	5	5	10	15	AWG8	GV3P18	12 – 18	LC1D18	65	25
1.5	3	5	7.5	15	20	AWG6	GV3P25	17 – 25	LC1D25	65	25
2	5	7.5	10	20	25	AWG6	GV3P32	23 – 32	LC1D32	65	25
3	...	10	...	25	30	AWG3	GV3P40	30 – 40	LC1D40A/50A/65A	65	25
...	7.5	10	15	30	40	AWG3	GV3P50	37 – 50	LC1D50A/65A	65	25
5	10	15	20	40	50	AWG3	GV3P65	48 – 65	LC1D65A/80	65	25

TeSys U, in combination with line space LU9SP0 for standalone starter, or with GV1G09 and GV2G. Busbars for multiple starter – File UL E164871.

Maximum Horsepower Ratings						Associated cable Type 75 °C-Cu	Type of self-protected combination starter	Thermal setting (A)	SCCR (kA) 480 Y/277 V	SCCR (kA) 480 V with LUALB1 limiter	SCCR (kA) 600 V with LUALB1 limiter
1Ø		3Ø									
120 V	240 V	200 V	240 V	480 V	600 V						
1.5	2	3	3	7.5	10	AWG8	LUB12	Up to 12	65	130	65
2	5	10	10	20	25	AWG6	LUB32	Up to 32	65	130	65

When limiter block LUALB1 is used, SCCR apply for standalone starter or with GV1G09 and GV2G busbar for multistarter.



3 Motor load protection and control

Variable speed driver starter

A proven, compact, and cost-effective, multistandard variable speed drive starter solution that complies with UL 508C and UL 508A and combines a TeSys GV IEC 947-2/UL 508 Type E manual self-protected combination motor controller with Altivar™ drives.



Drive model	Requires use of listed line reactors Min I and R rating and the required operation voltages listed below	Type E combination motor controller	
		Model	Rating at 500 V, SCCR rating
ATV32H018M2	2.5 mH, 10 A, 250 V	GV2P08 + GV2GH7	4 A, 65 kA
ATV32H037M2		GV2P10 + GV2GH7	6.3 A, 65 kA
ATV32H055M2		GV2P14 + GV2GH7	10 A, 65 kA
ATV32H075M2		GV3P13 + GV3G66 + GVAM11	12 A, 65 kA
ATV32HU11M2	0.8 mH, 27 A, 250 V	GV3P18 + GV3G66 + GVAM11	18 A, 65 kA
ATV32HU15M2		GV3P25 + GV3G66 + GVAM11	25 A, 65 kA
ATV32HU22M2		GV3P25 + GV3G66 + GVAM11	25 A, 65 kA
ATV32H037N4	12 mH, 2 A, 480 V	GV2P07 + GV2GH7	2.5 A, 65 kA
ATV32H055N4		GV2P07 + GV2GH7	2.5 A, 65 kA
ATV32H075N4		GV2P08 + GV2GH7	4 A, 65 kA
ATV32HU11N4	6.5 mH, 6 A, 480 V	GV2P08 + GV2GH7	4 A, 65 kA
ATV32HU15N4		GV2P10 + GV2GH7	6.3 A, 65 kA
ATV32HU22N4	5 mH, 12 A, 480 V	GV2P14 + GV2GH7	10 A, 65 kA
ATV32HU30N4	2 mH, 12 A, 490 V	GV2P14 + GV2GH7	10 A, 65 kA
ATV32HU40N4		GV3P13 + GV3G66 + GVAM11	13 A, 65 kA
ATV32HU55N4	2.5 mH, 18 A, 480 V	GV3P18 + GV3G66 + GVAM11	18 A, 65 kA
ATV32HU75N4	1.5 mH, 27 A, 480 V	GV3P25 + GV3G66 + GVAM11	25 A, 65 kA
ATV32HD11N4	1.2 mH, 37.5 A, 480 V	GV3P32 + GV3G66 + GVAM11	32 A, 65 kA
ATV32HD15N4	0.8 mH, 52.5 A, 480 V	GV3P40 + GV3G66 + GVAM11	40 A, 65 kA

4 Leading edge enclosures

Spacial™ steel enclosures, Thalassa™ polyester enclosures, ClimaSys™ thermal management cabinets ... For many years, Schneider Electric has sold a wide range of industrial enclosures through two major brands: Himel™ and Sarel™. Today, by integrating our brands, services, production, and our customer assistance services together under the Schneider Electric banner, we can offer OEMs unbeatable partnership opportunities.

The highest quality is our mission

Service quality: Our total quality approach covers every stage of product design, from manufacturing and ordering through delivery. We embrace our customers' needs as the focal point of all our processes, from new product development to product delivery from our logistics centers.

Customization quality: Extensive experience driving projects to a successful completion, combined with high-technology tools (3D laser machines, special laser marking, etc.), enables us to obtain high-quality results when customizing and adapting enclosures to your requirements.

Quality according to International Standards: UL, BV, DNV, GL, GOST, etc.



Keeping machinery in working order, wherever it's installed, is our key concern!

Global customer support

- Ready to serve you wherever you are:
- > Local after-sales service available worldwide
 - > Reduced worldwide after-sales costs
 - > Improved risk management across export activities
 - > Time saving

Co-engineering and customization

No matter the integration or developmental constraints you face when optimizing equipment to suit your machine production, we can provide professional services personalized to your needs and budget. Our customized equipment and integrated solutions allow you to upgrade your production or logistics.





A Schneider Electric TVD solution

Multistandard offer for OEMs, like all Schneider Electric solutions, includes tested, validated, and documented architectures, products, and services.

> Tested

Configurations have been tested and results approved by certified third-party labs.

> Validated

Solutions live up to Schneider Electric global solutions values of safe, reliable, efficient, productive, and green as proven by testing on platforms that reproduce various customer environments over the entire solution life cycle. The life cycle management of each component is guaranteed.

> Documented

In addition to Schneider Electric customer support, customers receive a complete set of user guides, training, and toolboxes to help ensure they achieve all of the benefits they expect from the solution.

Your challenges ...

- > reduce time-to-market
- > improve performance
- > develop your business

... while reducing your costs.



Our solution

Schneider Electric multistandard offer allows you to deploy one machine design worldwide. It helps you improve your logistic process while meeting standards and customs regulations.

It means having the solutions for your machine design and manufacturing near you and spare parts, services, and support near your customers, worldwide.

Make the most of your energySM

Schneider Electric USA

1415 S. Roselle Road
Palatine, IL 60067
Tel: 847-397-2600
Fax: 847-925-7500
www.schneider-electric.com

EDCED9984892EN

