



Seamless system integration for EV charging management

EcoStruxure™ EV Charging Expert integrated
into EcoStruxure™ Microgrid Advisor



se.com

Schneider
Electric

Advantages of integrating EcoStruxure™ EV Charging Expert into EcoStruxure™ Microgrid Advisor

A single interface designed to optimize the entire site's energy ecosystem at once: solar production, storage, building loads, demand response, and EV charging infrastructure.



Optimize operations

Automatically, dynamically, and remotely manage and optimize your site's energy resources



Maximise renewables

Reduce your carbon footprint by maximizing the usage of onsite renewables and battery energy storage



Optimize energy costs

Reduce energy costs, carbon footprint and maximize renewable energy usage



Static or dynamic allocation of the building energy to the EV chargers



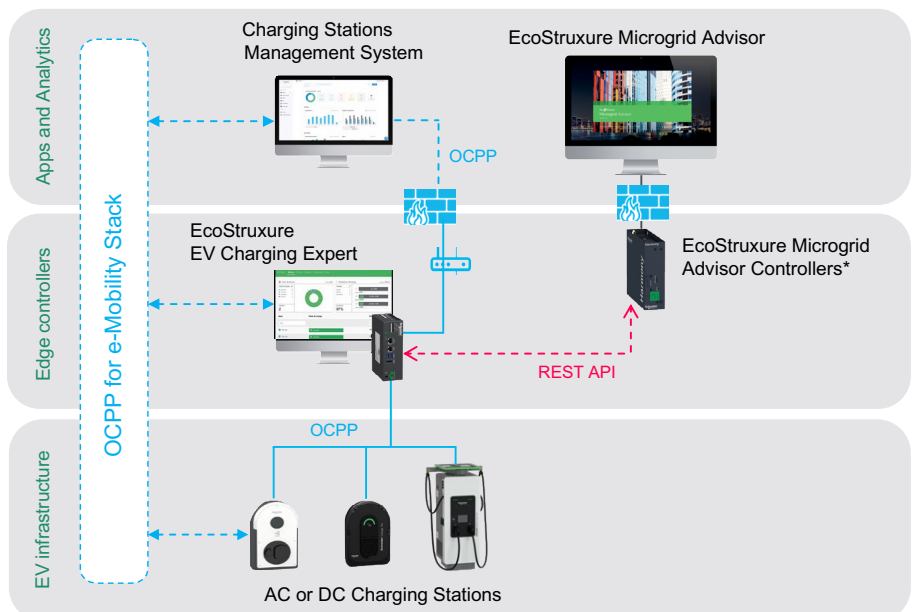
The system can pause a user's charging session based on the amount of energy already consumed, the duration of the session, or the user's priority status



Integration of on-site solar generation

Getting the most out of EcoStruxure

EcoStruxure from Schneider Electric is an open, interoperable, and IoT-enabled platform designed to deliver enhanced reliability, efficiency, sustainability, and connectivity across energy, automation, and building systems. It integrates **connected products, edge control, apps, analytics, and services** to provide real-time insights and optimized performance for industries, buildings, data centers, and infrastructure. Both EcoStruxure Building Operation and EcoStruxure EV Charging Expert are based on this Schneider Electric state of the art architecture.

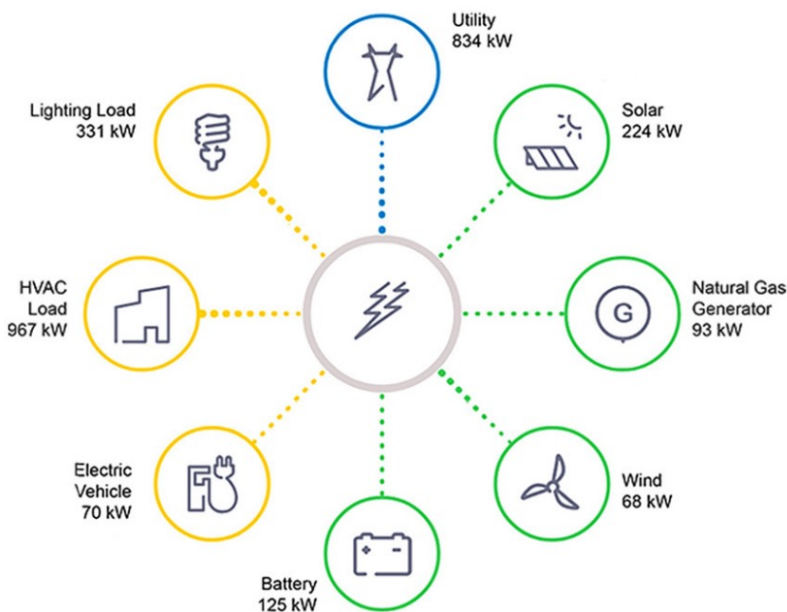


* References to be defined with your Schneider Electric local front office.



EcoStruxure Microgrid Advisor uses AI-driven forecasting and model predictive control to maximize renewables, cut costs, and simplify operations, all with simple and cybersecured web-based access for real-time monitoring and history.

By integrating **EcoStruxure EV Charging Expert** into EcoStruxure Microgrid Advisor, you can now take into account the load of your EV chargers within the rest, optimizing all your energy consumption, at once from a single interface.



Benefit of:

- A cloud-based software platform enables you to monitor your power consumption, production, and energy usage by date.
- Data export (Excel) feature enabling deeper analysis
- Custom configurations and web services can be developed based upon your specific requirements.

What is EcoStruxure Microgrid Advisor?

Microgrids are vital for resilient, sustainable energy, but optimizing them is key to cost and performance. EcoStruxure Microgrid Advisor uses AI-driven forecasting and model predictive control to maximize renewables, cut costs, and simplify operations, all with simple and secure web-based access for real-time and historical monitoring.

EcoStructure Microgrid Advisor features:



Automatically optimize operations:

Enhance microgrid cost performance with predictive control that optimize storage and EV charging



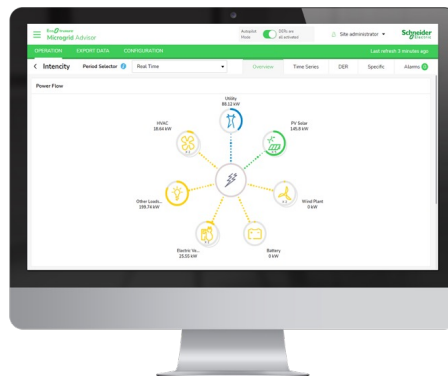
Monitor and forecast:

Monitor DER telemetry and microgrid loads with time series charts. Preview load consumption PV production and control orders for the next 24 hours



Alarms and notifications:

Customize and receive email alerts for events on your microgrid system with real-time monitoring of loads and DERs



Seamlessly integrate with utility tariff plans



Reduce energy costs, carbon footprint and maximize renewable energy usage



Secure data process:

Export data easily for in-depth analysis and stay ahead of cyber threats with layered security

How it works?

EcoStruxure Microgrid Advisor connects directly to your microgrid's DERs, meters, and control systems. Powered by AI, it continuously forecasts load, generation, tariffs, and EV charging needs, then computes the optimal operating plan. EcoStruxure Microgrid Advisor sends these recommendations – or direct set-points – back to the controller to intelligently schedule storage, generation, and EV charging throughout the day. This automated loop runs 24/7 to maximize savings and performance with minimal operator effort.

What is EcoStruxure EV Charging Expert?

EcoStruxure EV Charging Expert is a system that monitors, controls, and optimizes EV charging capacity based on power availability, peak demand, and tariffs. It helps building owners avoid extra costs, optimize their EV infrastructure efficiency, and enhance service continuity by adapting to each building's energy contract and power constraints.

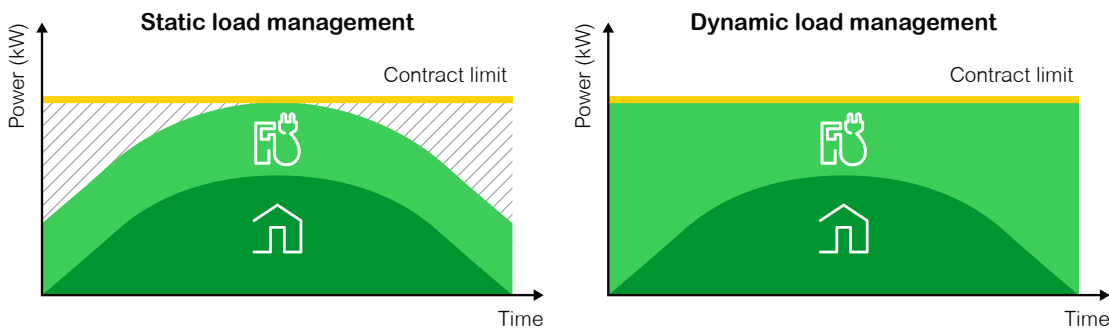
EcoStruxure EV Charging Expert can manage:

- Support for up to 250 Schneider Charge Pro, EVlink Pro AC, EVlink Pro DC, DC Schneider StarCharge Fast, and legacy Schneider Electric's chargers on a single controller
- Dynamic or static loads
- 20 zones and 4 zone levels
- PV production
- Identification
- User prioritization

[Learn more](#)



EcoStruxure EV Charging Expert limits the impact of EV charging infrastructure implementation on the electrical installation by using static or dynamic energy management principles.



It manages the available energy with load reduction, load shedding, and integration of PV production.

To manage charging sessions simultaneously, energy distribution can be based on:

Amount of energy already consumed

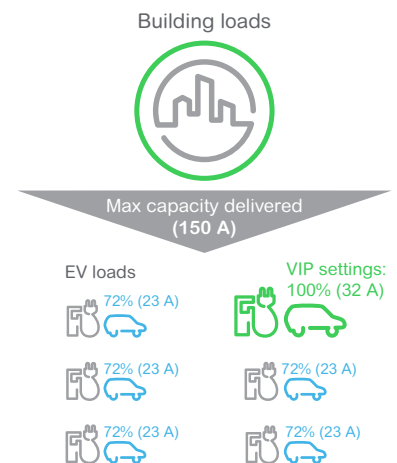
The system pauses charging for vehicles that have obtained the highest amount of kWh, favoring recently arrived vehicles.

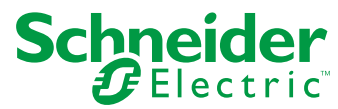
Connection time

The system pauses charging for vehicles that have been charged the longest, favoring the most recent arrivals. In both cases, the system rechecks and updates the situation every 15 minutes.

PV production

EcoStruxure EV Charging Expert can integrate PV production into the overall energy mix or use PV exclusively to charge EVs.





se.com

Schneider Electric France
Direction Marketing Communication France
35, rue Joseph Monier - CS 30323
F92506 Rueil-Malmaison Cedex