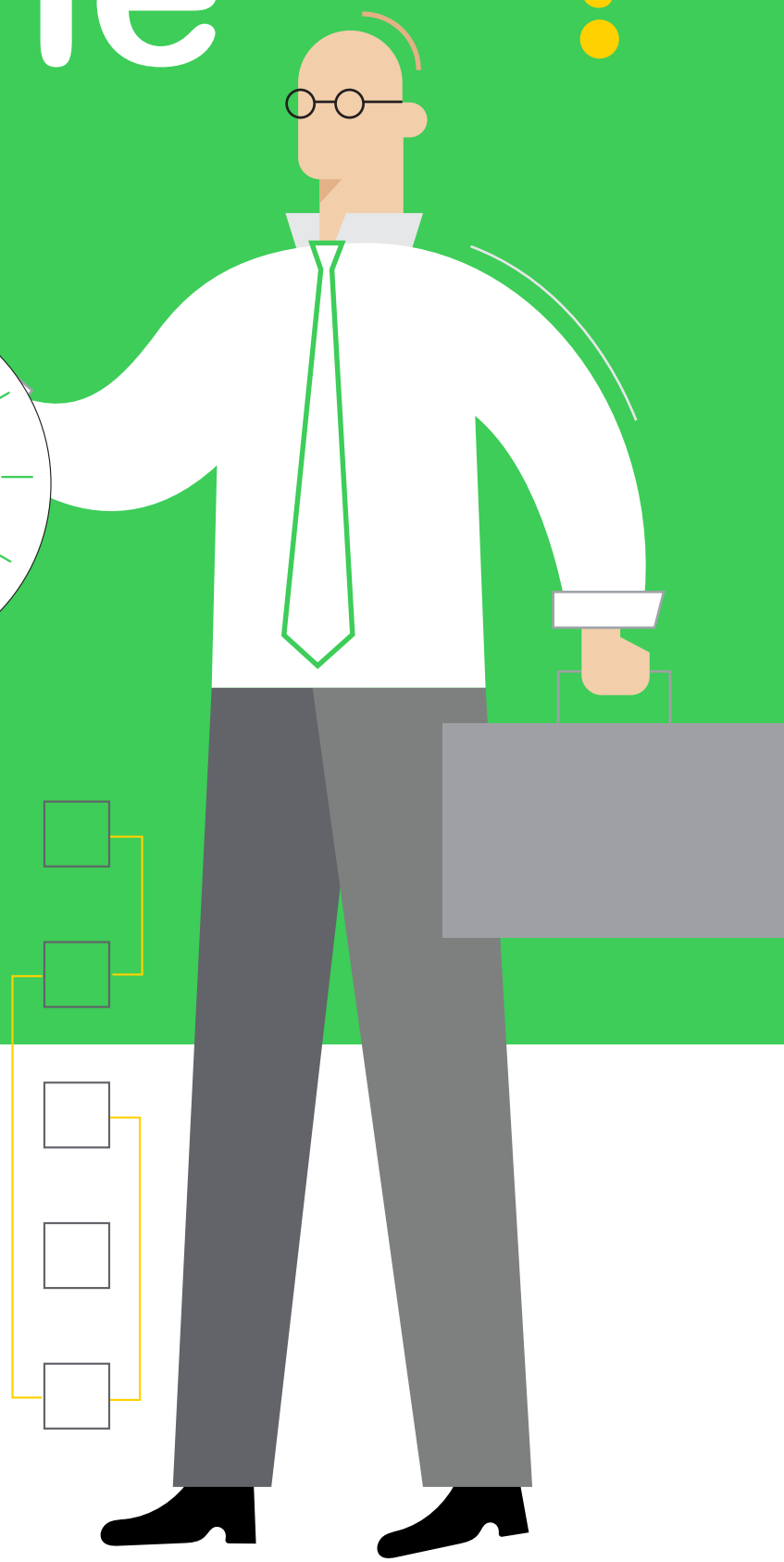
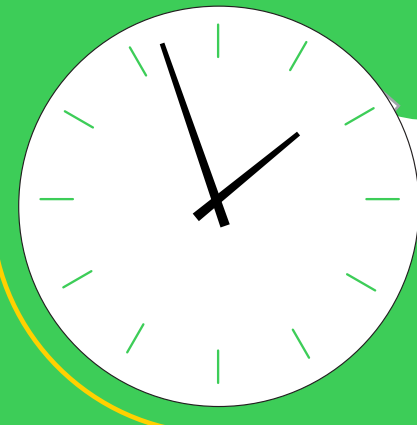


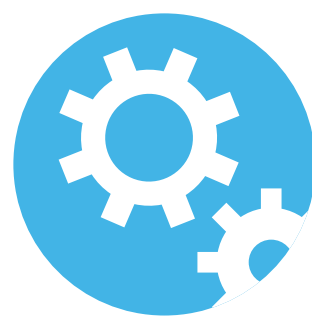
Is now the right time to migrate your Distributed Control System?



Migrating your DCS can be a simple process with significant financial and operational implications. What are some of the factors you should consider?



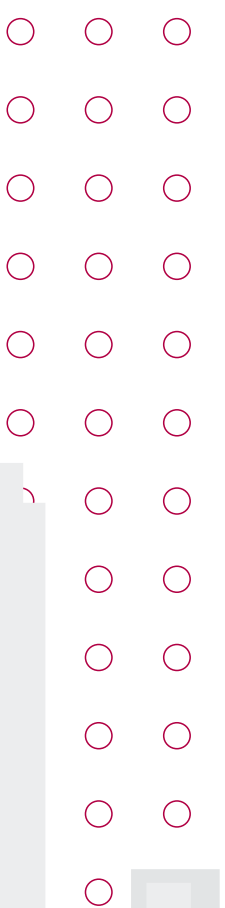
**15-20
years** is the
average lifespan
of aging DCS
equipment.



\$65B worth of
process automation
systems are nearing
the end of their
useful life.



Unplanned downtime can
cost an organization up to
\$100,000 per hour.



A DCS upgrade brings your system up-to-date on reliability, availability, and security standards.

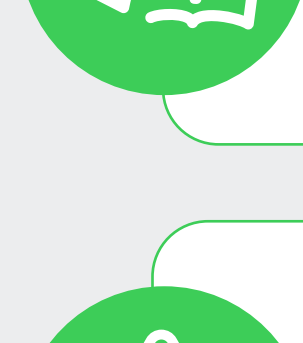
Older control systems can have a serious impact on your bottom line. **Are you experiencing this in your plant:**



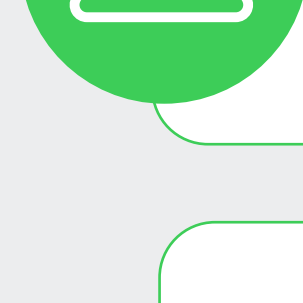
Increased unplanned downtime



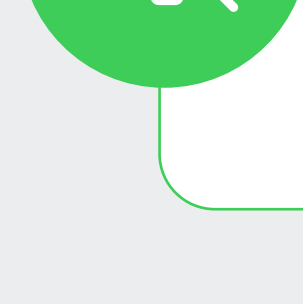
Higher maintenance costs



Fewer sources for parts, expertise, and vendor support



Decreased on-site knowledge due to retiring staff



Lost business opportunities due to limited compatibility and connectivity with other systems



Investing in a DCS upgrade provides measurable improvements



15%

reduction in time and engineering costs



30%

reduction in maintenance costs



30%

increase in operational reliability

Today's DCS migration solutions address your unique challenges

Common misperceptions

"It will take too much time to train my maintenance staff on the new system."

Real solutions

Provide training and support to get maintenance staff up to speed quickly.

"It's too costly."

Conduct a cost/benefit analysis to find the most cost-efficient solution.

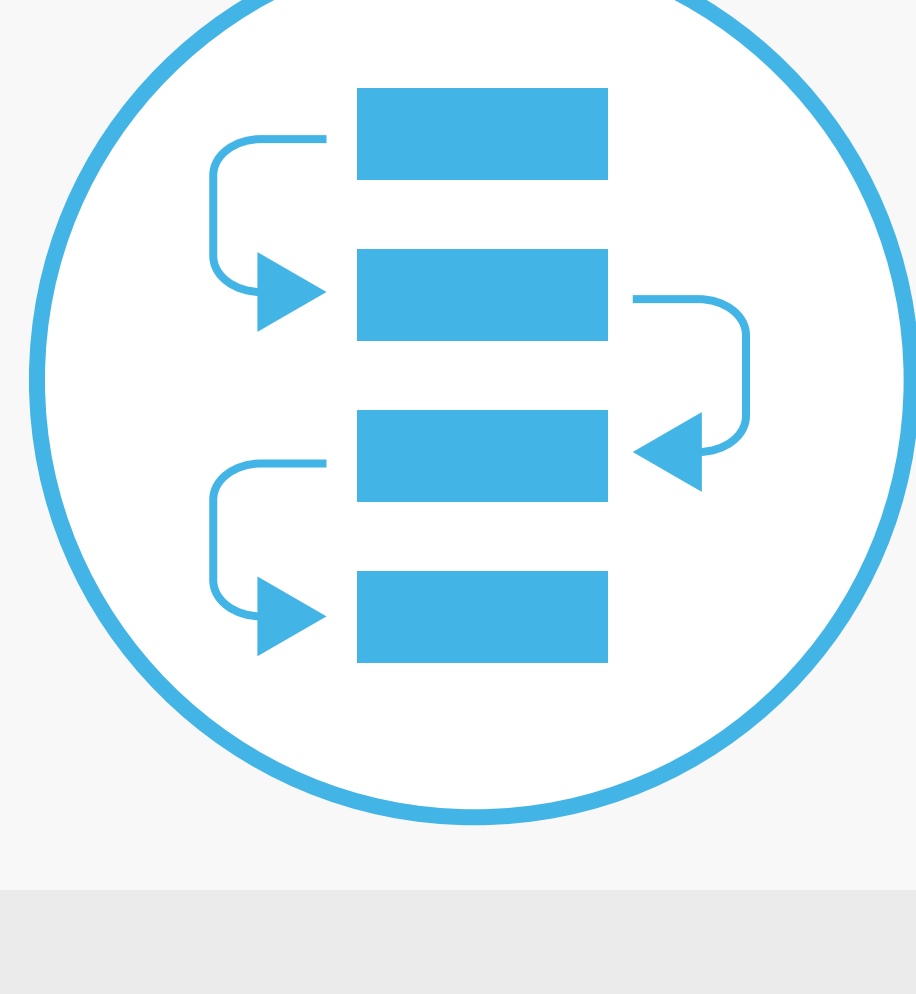
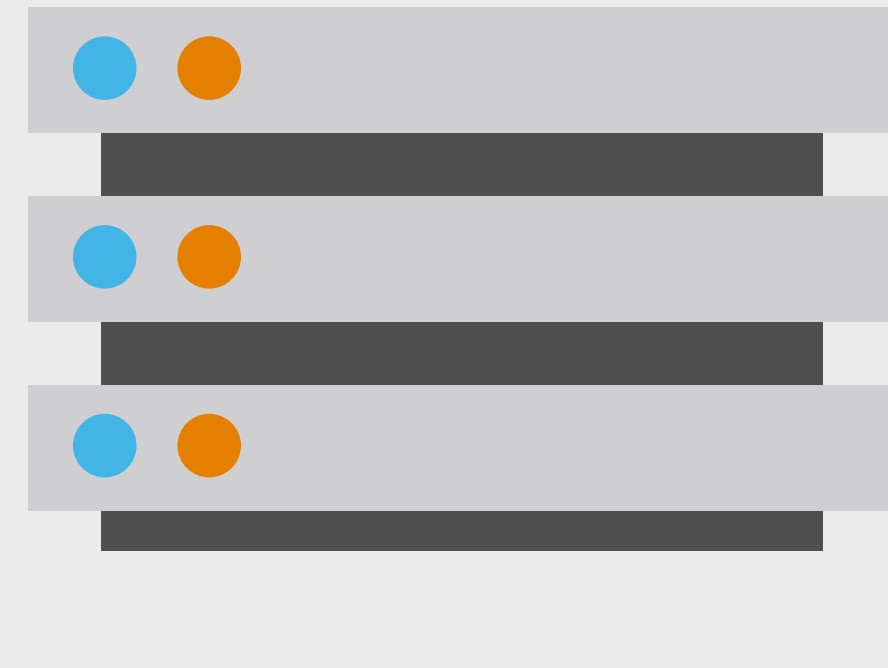
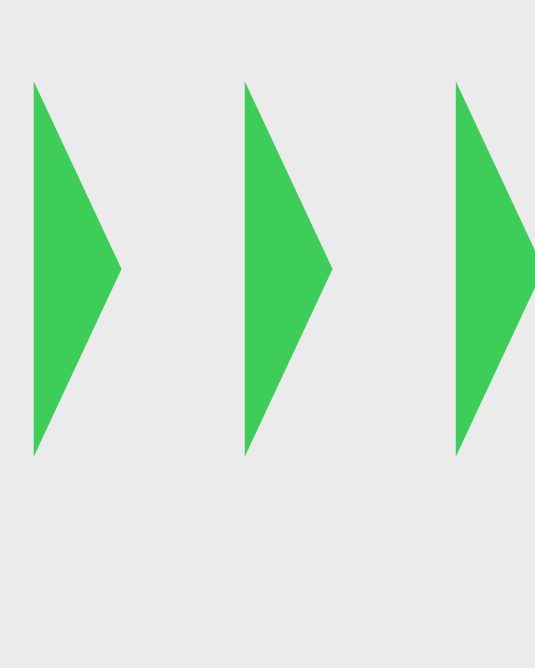
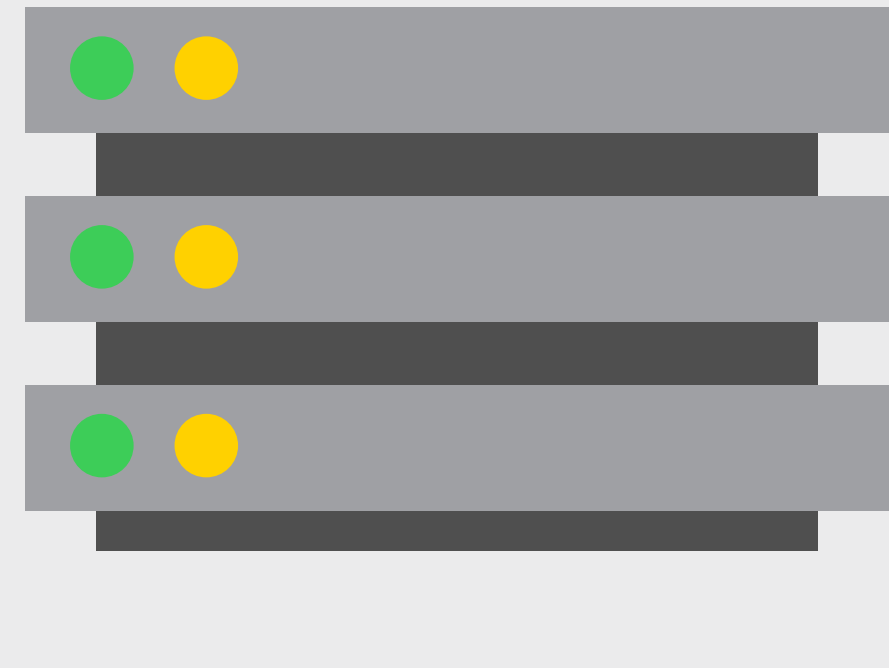
"The new system won't work with our existing equipment."

Implement enterprise-wide control systems that work with your existing and future plant, business, and auxiliary systems.

"If it ain't broke, don't fix it."

Analyze risk to proactively identify potential system failures and adopt technological advances.

Key steps to optimize DCS migration



Plan – Involve the right experts to collect relevant data that is critical for effective migration.

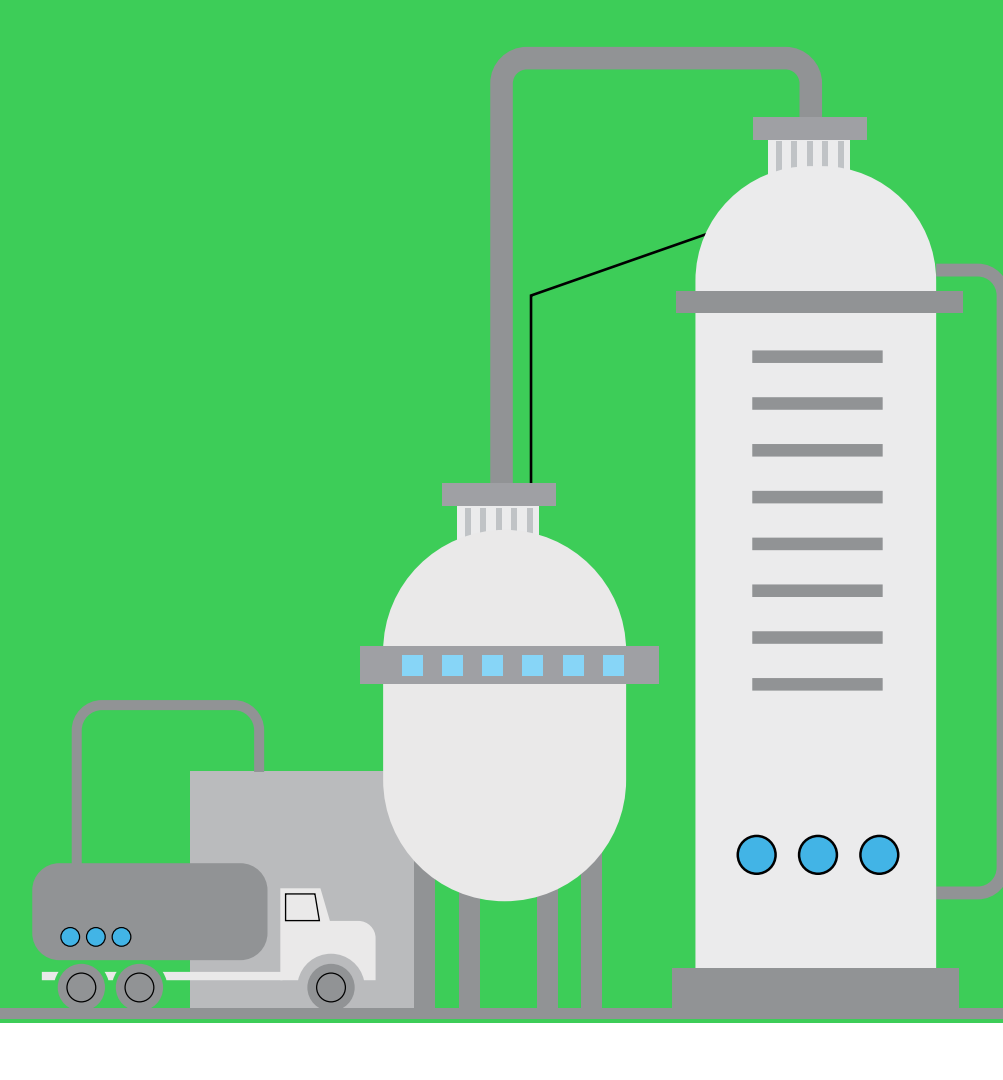
Prepare – Get documentation, processes, and people ready for migration through formal trainings for maintenance and operators. Drive successful factory acceptance and pre-commissioning tests.



Document – Update system drawings and process graphics.

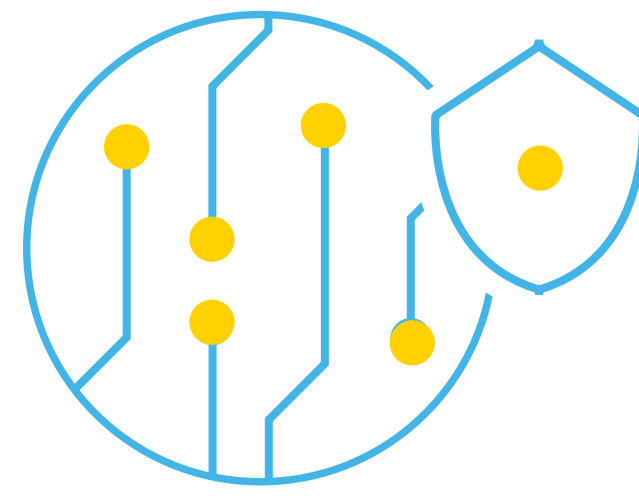
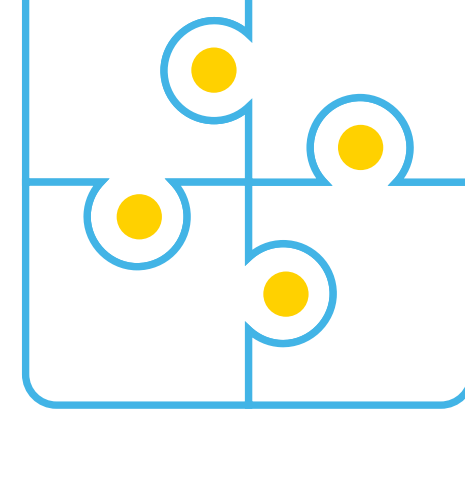
The right solution is critical to a successful DCS migration

What EcoStruxure™ Foxboro™ DCS migration means for your operations



Minimize risk and downtime:

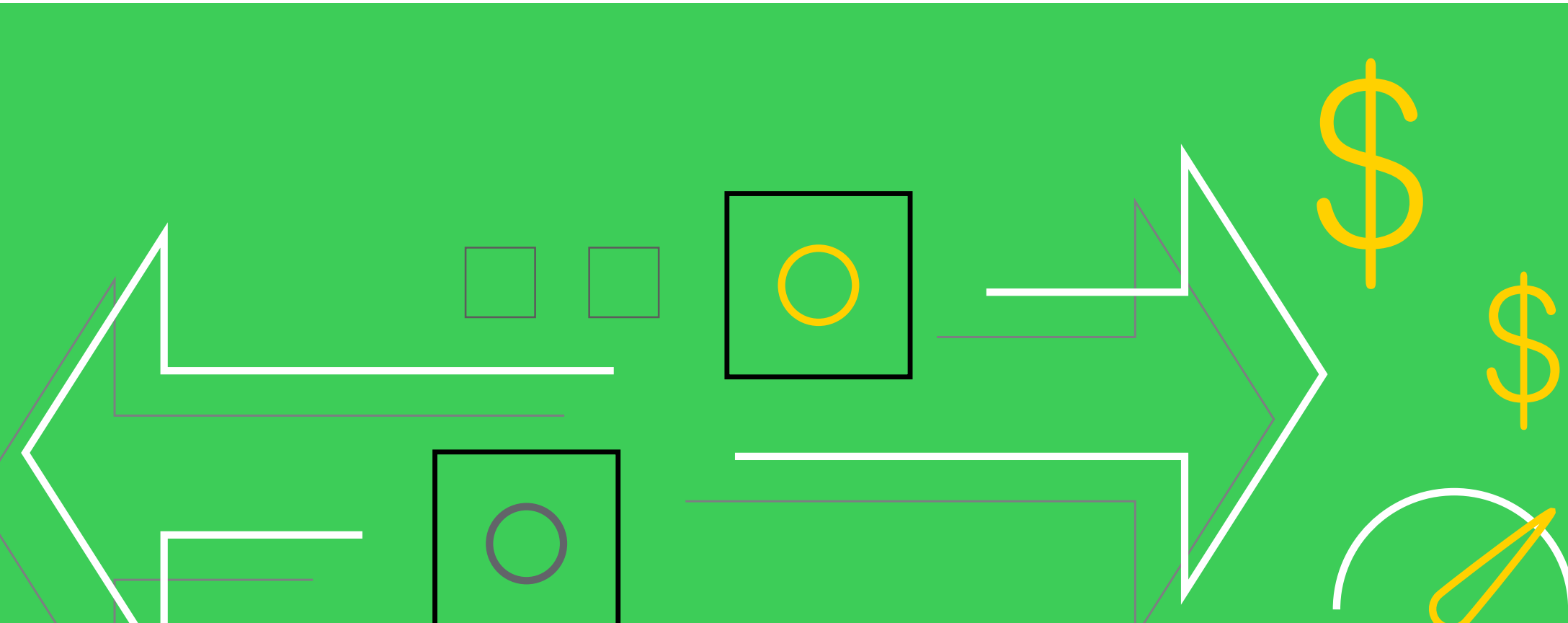
a simple plug-in I/O solution with no construction or rewiring required



Future-proof your technology: preserve your investments

Increase process safety, cybersecurity, and operational integrity: delivers up to

100% ROI in less than one year



DCS migration has never been faster, easier, and more profitable. Find out how a DCS upgrade can benefit your business.

[Discover more](#)

Life Is On

Schneider Electric