



A digital circuit breaker built for the future

EvoPacT™ medium voltage
digital vacuum circuit breaker

se.com/us/evopact



Life Is On

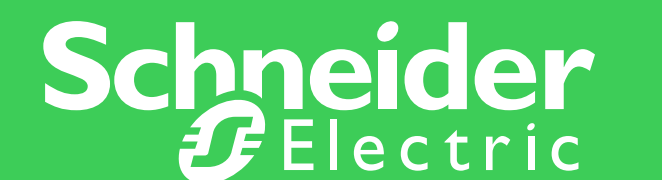
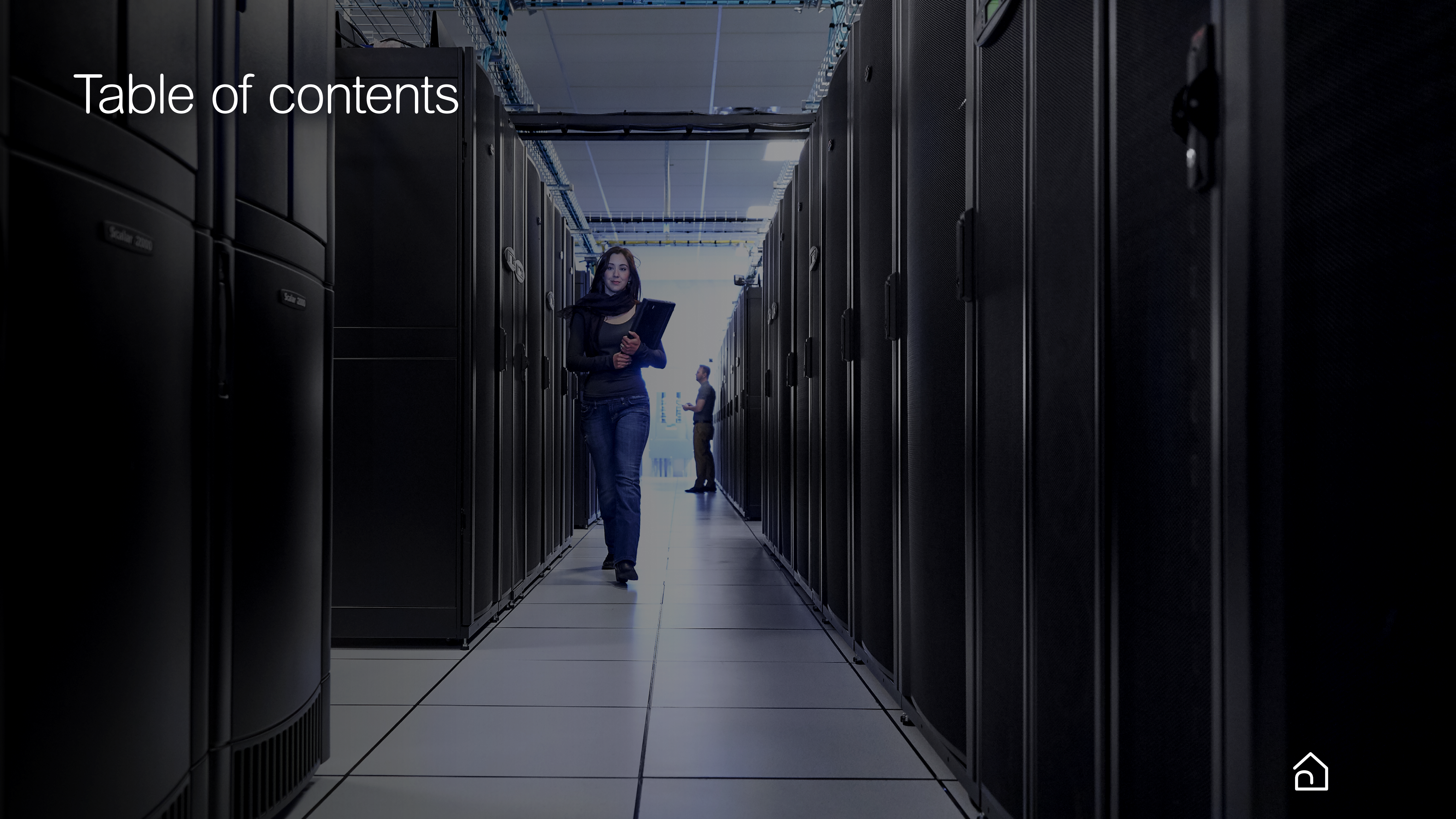


Table of contents



Introducing EvoPacT digital vacuum circuit breakers

⚠ DANGER / PELIGRO / DANGER

HIGH VOLTAGE - KEEP OUT
HAZARD OF ELECTRICAL SHOCK, EXPLOSION OR ARC FLASH

ALTO VOLTAJE, MANTENGASE ALEJADO
PELIGRO DE DESCARGA ELECTRICA, FLASH, EXPLOSION O ARCO

HAUTE TENSION, DANGER D'ENTRÉE EN CONTACT
RISQUE D'ELECTROCUTION, D'EXPLOSION OU ECLAIR D'ARC ELECTRIQUE

• Apply appropriate personal protective equipment (PPE) and follow safe electrical work practices. See NFPA 70E, CSA 2462, or equivalent local standards.

• Use a minimum of protection personal equipment (PPE) appropriate to the hazard level. Consult the local electrical code, such as NFPA 70E, CSA 2462, or equivalent local standards.

• Do not touch or remove circuit breaker or electrical ground and test device unless their main contacts are open.

• Verify the position indicator is in the open position on the front of the circuit breaker or electric ground and test.

• Failure to follow these instructions will result in death, serious injury or equipment damage.

• Utilice un mínimo de protección personal de seguridad para trabajos eléctricos. Consulte la norma 70E de NFPA, 2462 de CSA, o las normas equivalentes locales.

• No toque ni retire el interruptor ni la conexión de tierra a menos que los contactos principales estén abiertos.

• Verifique que el indicador de posición esté en la posición abierta en la parte delantera del interruptor o la conexión a tierra y el dispositivo de prueba.

• El cumplimiento de estas instrucciones puede causar la muerte, lesiones graves o daño al equipo.

• Evitez tout contact avec les parties nues de l'équipement. Consultez les normes de sécurité appropriées, telles que NFPA 70E, CSA 2462, ou les normes locales équivalentes.

• N'ouvrez pas le couvercle de protection individuelle (PPE) approprié en fonction du niveau de danger. Consultez le code électrique local, tel que NFPA 70E, CSA 2462, ou les normes locales équivalentes.

• Ne touchez pas le disjoncteur ou le dispositif de mesure de la terre à moins que les contacts principaux ne soient ouverts.

• Vérifiez que l'indicateur de position est positionné ouvert à l'avant du disjoncteur ou du dispositif de mesure de la terre et de l'équipement de test.

• Si ces directives ne sont pas respectées, cela entraînera la mort, des blessures graves ou des dommages matériels.

O
Push OFF

I
Push ON

Introducing EvoPacT

More resilient and sustainable power availability

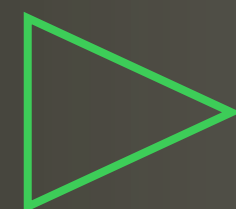
Scalable and ready for everything



A revolutionary circuit breaker for MV distribution

EvoPacT medium voltage (MV) circuit breakers bring infrastructure, large industrial or commercial buildings, electro-intensive processes, or cloud and service providers into the future with IoT-enabled features that meet the needs of our All Digital, All Electric world. By bringing us closer to our facilities' operations than ever before, EvoPacT improves how we interact with our electrical systems, ushering in the digital revolution.

Learn more about the digital transformation



Connectivity — the future of your facility

EvoPacT's digital technology unlocks state-of-the-art capabilities that give you insight into your facility's electrical distribution. With sensors, apps, services, and a Digital Logbook, EvoPacT enables:

- **Reduced risk** with remote monitoring and control, so you can operate outside of the arc flash zone
- **Improved efficiency** and **uptime** using sensors and monitoring that detect issues, like hot spots on major power connections, before they occur
- **Increased productivity**, enabled by automated and guided operation
- **Better visibility** over your electrical distribution system by measuring, collecting, aggregating, and communicating data
- **Lower cost of operation** with EcoStruxure™ digital services by optimizing condition and maintenance data from all connected products
- **More resilient power availability, reliability, and durability**, with best-in-class components and 24/7 monitoring



Make sense of your data with digital tools

EvoPacT improves visibility into your facility's health and efficiency using advanced monitoring, data collection, and software.

- 1 Switchgear HMI**
Remotely access information about your circuit breakers and be aware of abnormal activity as soon as it happens with dashboards and alerts, all in one place.
- 2 Asset health monitoring**
Mitigate downtime and help protect against arc flash with condition-based monitoring that alerts you to breaker health, thermal abnormalities, and environmental changes.
- 3 Digital control**
Control operations remotely or locally without entering the arc flash zone using HMI mirroring to your connected device.
- 4 QR code access**
Access the Digital Logbook, manuals, and support through EcoStruxure Facility Expert's digital environment using your circuit breaker's unique QR code.

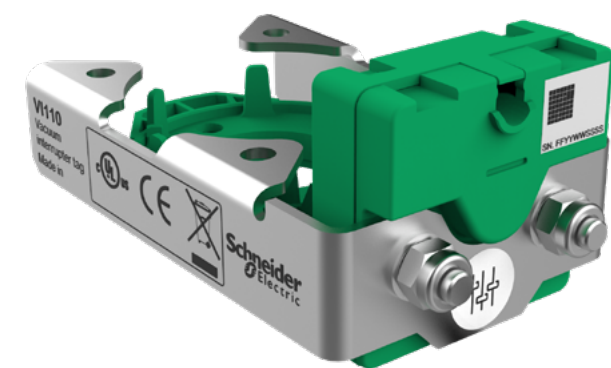


- 5 EcoStruxure Facility Expert app**
Simplify maintenance, optimize operation, and monitor energy consumption remotely to improve efficiency. For better organization, access documentation across any device using the included Digital Logbook.



Operate smarter with innovative technology

EvoPacT digital circuit breakers work with your connected solutions, whether they're made by Schneider Electric or not. By collecting and analyzing performance data, you can optimize operations throughout your facility.



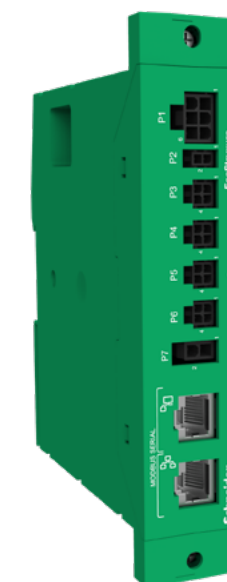
EvoPacT Sensors

A set of sensors giving you better insight into the overall health of your EvoPacT circuit breaker by monitoring its opening/closing mechanism, vacuum interrupter, coil health, and spring charging motor.



PowerLogic Tag Series

A range of sensors that monitor EvoPacT and its enclosure, alerting you to thermal and environmental abnormalities through your connected device.



EcoStruxure Operation Server

A server that collects information from dedicated circuit breaker sensors to give you an accurate assessment of your equipment's overall health and better visibility into its condition.



EcoStruxure Panel Server

A high-performance, modular gateway that connects EvoPacT to edge control or cloud applications 24/7, creating a cybersecure, IoT-enabled environment.



The Digital Logbook — every document, at your fingertips

EvoPacT digital circuit breakers give you access to a Digital Logbook with EcoStruxure Facility Expert, where you can find all the documents you'll need during manufacturing, installation, operation, and maintenance — from anywhere.

Using the Digital Logbook, records, product information, and project files can be shared easily with your professional partners for easier organization and collaboration within a paperless environment on one cyber-compliant platform.

Throughout your circuit breaker's lifecycle, your Digital Logbook gives you instant access to product- or project-specific:

- User manuals
- Design drawings
- Single-line diagrams
- Factory and site acceptance tests
- Spare parts lists
- Maintenance records and schedules



For more information about how Facility Expert and the Digital Logbook could improve your operations, [watch this video](#).

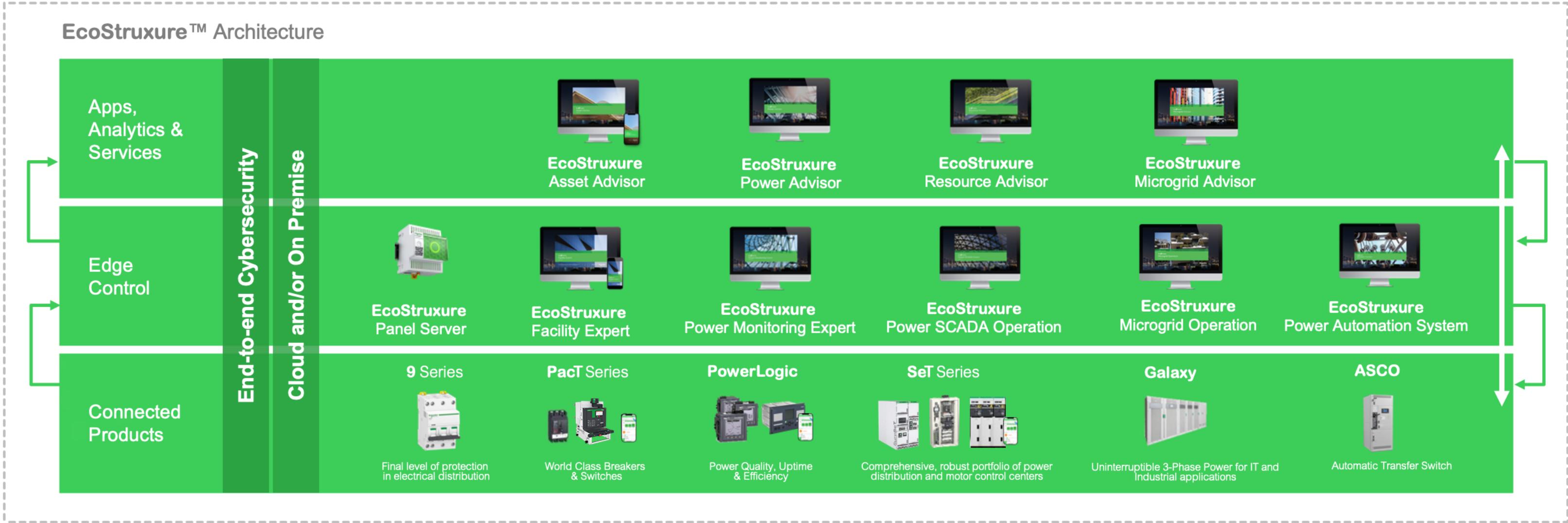


EvoPacT and EcoStruxure

IoT-enabled EvoPacT circuit breakers are part of the Connected Products level of EcoStruxure — Schneider Electric’s open, interoperable IoT-enabled system architecture and platform. By connecting to our Edge Control and Apps, Analytics, and Services layers, EvoPacT becomes part of an architecture enabling digital tools that enhance safety, reliability, efficiency, sustainability, and connectivity for our customers.

By leveraging advancements in IoT, mobility, sensing, cloud, analytics, and cybersecurity, EcoStruxure delivers Innovation at Every Level. This unified approach provides more value than a traditional network of isolated devices and is covered by end-to-end cybersecurity.

EcoStruxure™ Power



More resilient and sustainable power availability

Introducing EvoPacT

More resilient and sustainable power availability

Scalable and ready for everything



Reduce risks

With innovative features, EvoPacT digital circuit breakers help mitigate risks for facilities and the people who work in them.

Digital tools enable new working practices

EvoPacT performs automated or time-delayed operations to reduce hazards in two ways:

- To aid in arc flash prevention, you'll receive 24/7 alerts to your connected device informing you of fire risks or health monitoring concerns in addition to assistance in aligning the circuit breaker's power connections.
- To keep you at a greater distance while operating live equipment, you can assess EvoPacT using a connected device or local HMI through its digital monitoring and control platform.

Designed to put your mind at ease

Working alongside digital technology, EvoPacT's design helps to identify risks and guide operations, automating processes to allow operators to maintain a greater working distance outside of the arc flash zone when needed.

The circuit breaker also features a robust interlocking system that can be equipped with keylocks, padlocks, and a blocking magnet to prevent it from closing when auxiliary power is lost.



Steadfast power availability

EvoPacT digital circuit breakers are made with more than 45 years of medium-voltage design experience and are manufactured using in-house, best-in-class components, giving you improved uptime and product longevity.

EvoPacT is:

- Proven to last three times longer than the industry standard for MV circuit breakers, making it unmatched in durability
- Built to withstand up to 30,000 mechanical operations and up to 100 short-circuit clearances under real-life circumstances
- Tested against all major international standards, including ANSI/IEEE, GB/T and IEC

EvoPacT's longevity is further enhanced by the latest innovative sensors that continuously monitor health and self-detect abnormal conditions, sending you real-time alerts. These digital features not only reduce unplanned downtime, but the overall maintenance cycle as well.



Unmatched efficiency

By modernizing maintenance, EvoPacT circuit breakers let you keep doing what you do more efficiently.

State-of-the-art, IoT-enabled sensors continuously monitor EvoPacT's health in real time and alert you to abnormalities as soon as they happen. By gaining insight into changes that may affect the circuit breaker's health and adopting a condition-based maintenance strategy, you can help prevent unplanned shutdowns and save maintenance time and costs.

EvoPacT's comprehensive monitoring and control platform is accessible through a local or remote display or connected device. Whether you're remote, local, on premise, or operating in the cloud, you can make decisions as soon as you get an alert.



Green Premium

More than 75% of Schneider Electric product sales, including EvoPacT, are Green Premium™ certified, a label achieved by providing industry-leading sustainable value.

All Green Premium offers:

- Provide superior transparency in material content, regulatory information, and environmental impact
- Improve resource efficiency throughout the asset's lifecycle, including energy and natural resources, as well as the minimization of CO₂ emissions
- Retrofit to legacy equipment easily, allowing for the adoption of digital, IoT-driven practices and maintenance
- Go beyond RoHS and REACH compliance, with step-by-step substitution of harmful materials and substances



Built-in sustainability

Sustainable facilities help ensure a greener future for our planet and ourselves. EvoPacT digital circuit breakers are Green Premium certified, part of our commitment to deliver sustainable performance for our customers.

EvoPacT circuit breakers are:

- Designed to be modular and easily upgraded, whether you are upgrading with additional monitoring sensors or scheduled maintenance to replace control components. Your circuit breaker can quickly and smoothly evolve with your business needs
- Tested for long-lasting performance and durability, up to 30,000 operations, so you replace your circuit breaker less often, lowering environmental impact, reducing overall maintenance, and improving costs
- Built using vacuum technology to retain familiar operation and avoid environmental pollutants



IC: 21245-097742
FCCID: 2AHP8-097742

Scalable and ready for everything



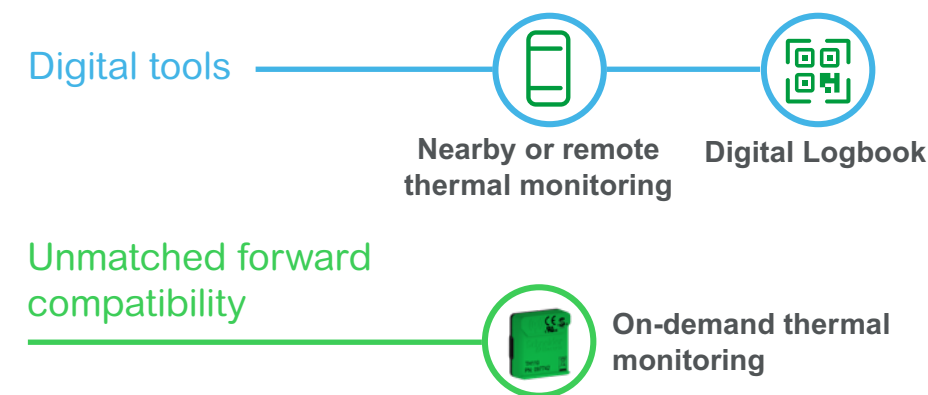
Scalable and customizable for the perfect fit

Designed to be modular, flexible, and easily upgraded, EvoPacT circuit breakers come in a scalable range of connectivity tiers, to fit your growing needs. Whether you start with the standard EvoPacT, EvoPacT Active, or EvoPacT Active Plus, sensors, monitoring, and control features are easily scaled. Upgrading is a smooth process, available when your facility is ready.



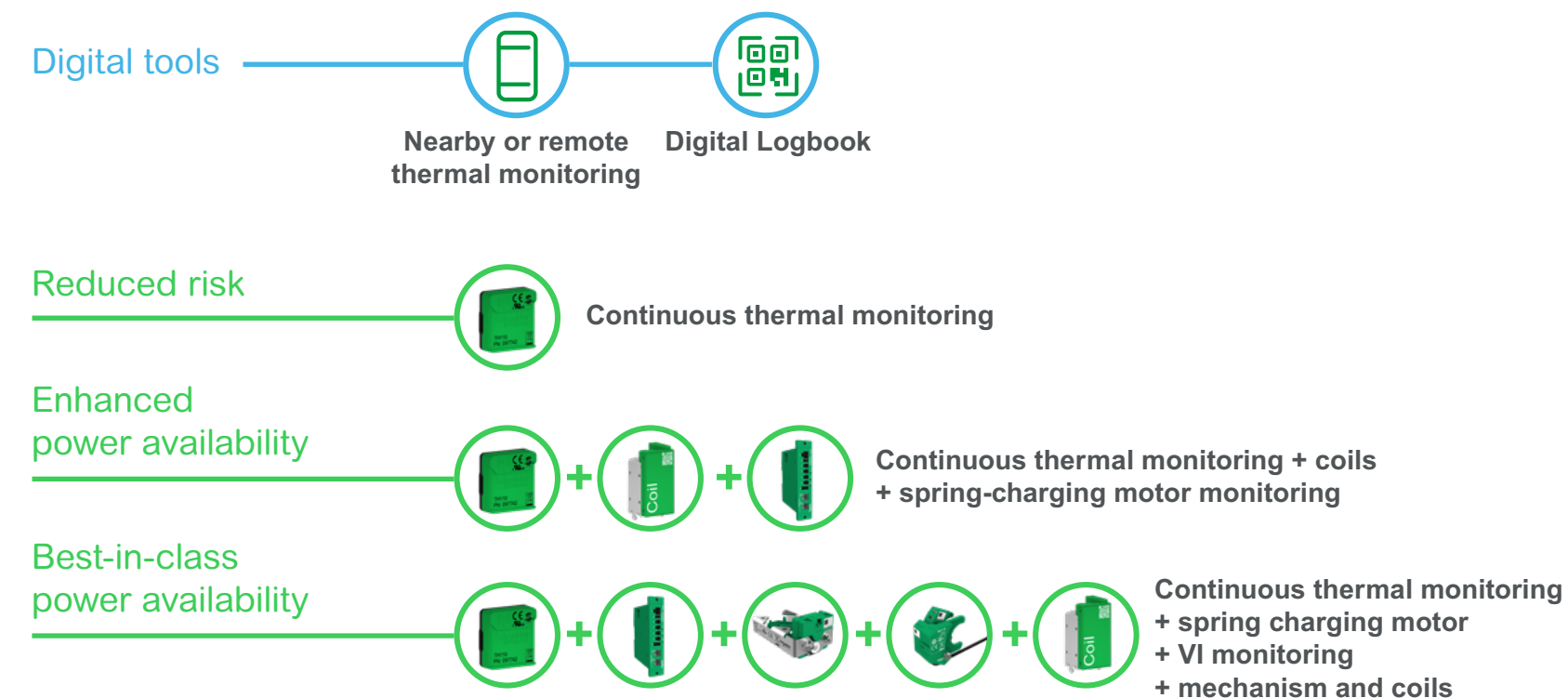
EvoPacT

With **future-ready** connectivity upgrade capabilities, our standard circuit breaker provides thermal monitoring using a smart device as well as fast access to documentation through the Digital Logbook, accessed via QR code.



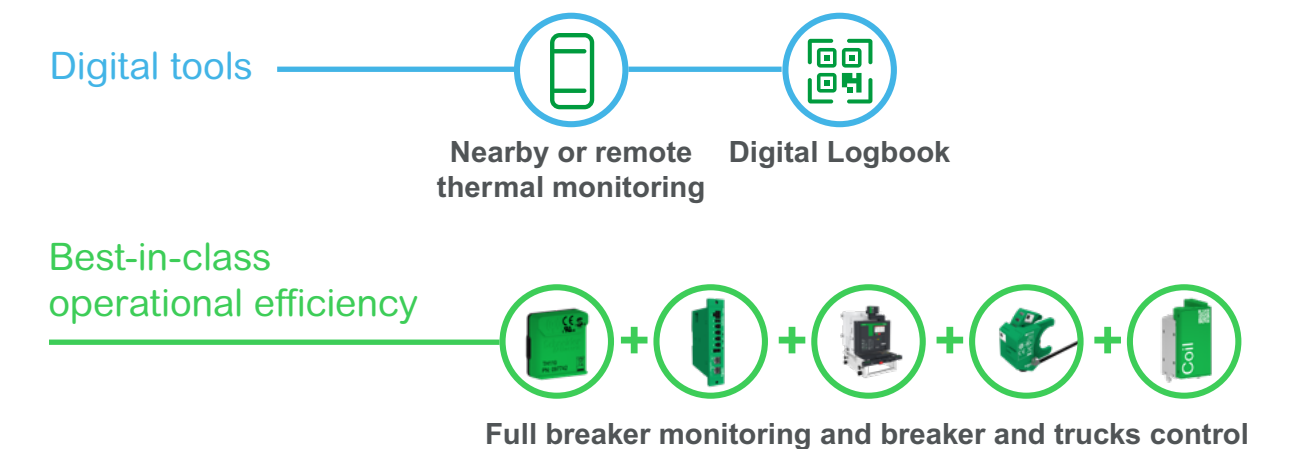
EvoPacT Active

React faster to help prevent unplanned downtime with a 24/7 connected circuit breaker. **Essential condition monitoring** provides scalable features and smart alerts.



EvoPacT Active Plus

Comprehensive monitoring and control enables a fully connected breaker with health diagnosis and alerts from anywhere, as well as operation and racking through your local HMI or connected device.



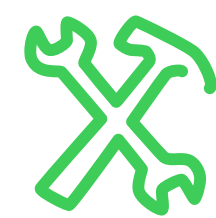
Explore EcoStruxure Service Plans

EvoPacT can be outfitted with a variety of services that help you adopt condition-based maintenance to further mitigate risks for your facility.

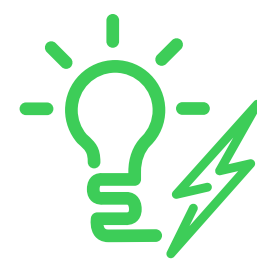
From essential support to the most advanced expertise, EcoStruxure Service Plans are tailored service contracts unique to you. They combine EcoStruxure's digital expertise with 24/7 remote and on-site support, all tailored to your needs, designed to provide condition-based and predictive analytics that allow you to perform dynamic maintenance.

Discover how a customized service plan could help improve your operations. [Find out more](#)

An EcoStruxure Service Plan allows you to:



Reduce maintenance activities and downtime by up to 40%* by performing dynamic maintenance



Mitigate electrical failure risk by up to 75%* by combining environment and thermal monitoring



Extend your asset lifecycle by 25%*, reducing your CO₂ footprint and complying with the latest standards and regulations



Reduce CapEx up to 30%* by identifying hidden spare capacity or freeing up more capacity with power quality mitigation



Access the best-in-class experts and support, remotely and on-site 24/7



Predict major failures and schedule maintenance when needed with condition-based remote monitoring and analytics



Deliver more efficient operations with reduced risks while making business more resilient and sustainable

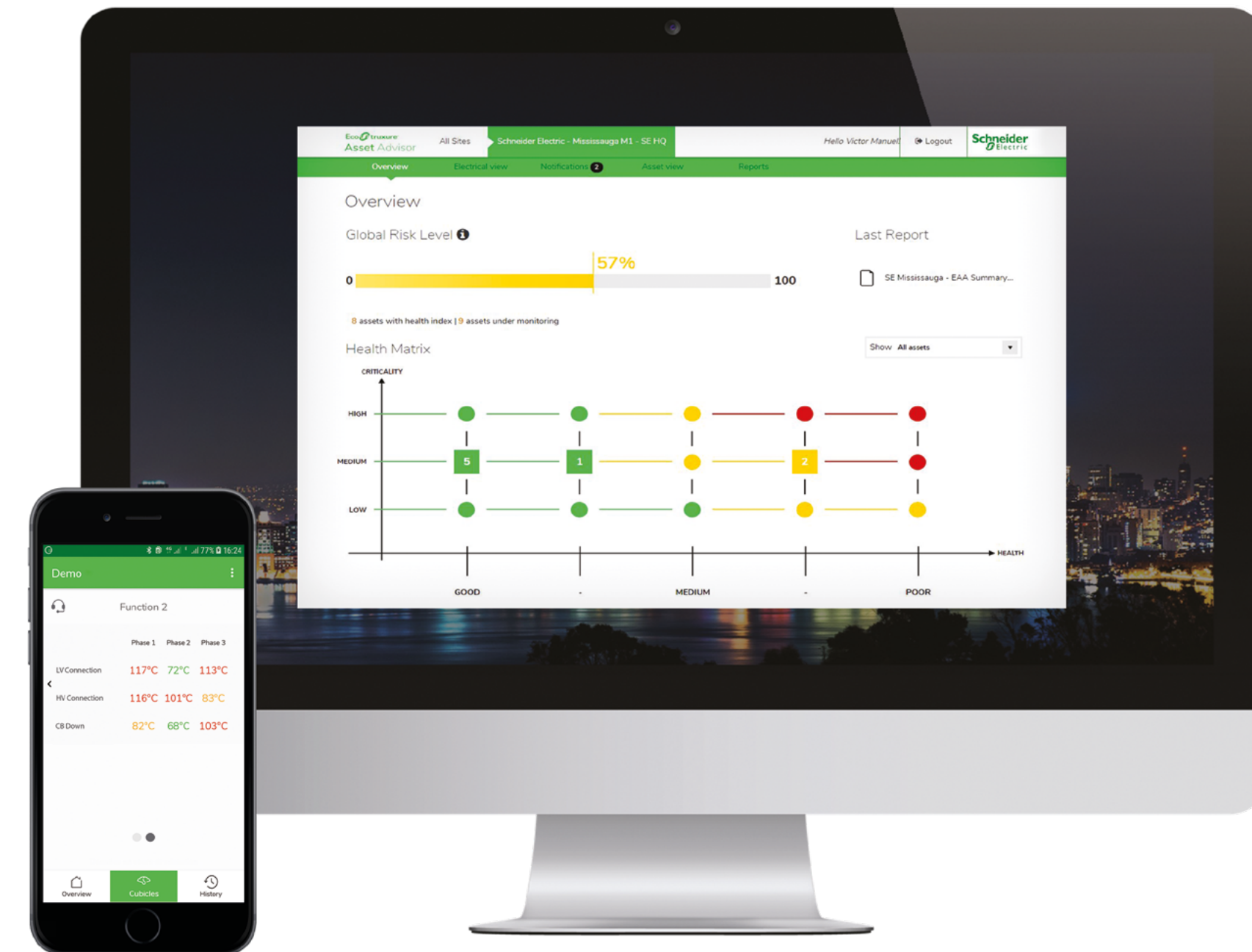
*These percentages are non-contractual and are based on Schneider Electric's experience and expertise for the main root cause of electrical failure risk observed and for which Schneider Electric has developed solutions.



Enhance your service plan with Asset Advisor

When you couple EvoPacT with EcoStruxure Service Plans and their digital capabilities, you can also get access to EcoStruxure Asset Advisor. This allows you to evaluate live data from your critical connected assets and apply advanced analytics to identify potential threats. With this data, EcoStruxure Asset Advisor gives you the power to choose whether to take action yourself or leverage Schneider Electric's Connected Services Hub when making critical decisions.

Explore how EcoStruxure Asset Advisor can improve your visibility. [Discover more.](#)



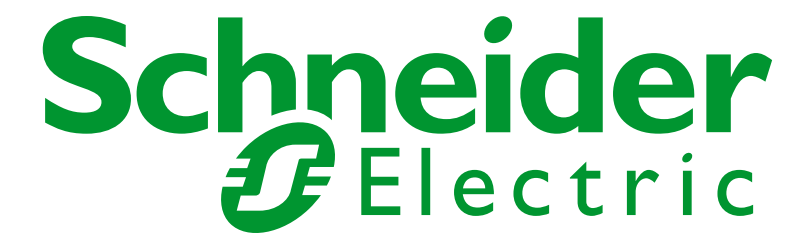
ANSI technical specifications

General characteristics for EvoPacT withdrawable MV circuit breakers

Designation			
Rated voltage	Ur	kV	15
Rated frequency	fr	Hz	50/60
Rated power frequency withstand voltage	Ud	kV	38
Rated short-circuit breaking current	Isc	kA	40
Rated duration of short circuit	tK	s	2
Rated normal current	Ir	A	1200
			2000
Rated operation sequences			O-0.3s-CO-15s-CO
			O-0.3s-CO-3min-CO
			O-3min-CO-3min-CO
Mechanical endurance	Nb operations		30,000



Life Is On



To learn more information about
Schneider Electric **EvoPacT** digital vacuum circuit breakers visit

se.com/us/evopact



Schneider Electric

800 Federal Street
Andover, MA 01810, USA
888-778-2733

© 2022 Schneider Electric. All Rights Reserved. Life Is On Schneider Electric, EvoPacT, Green Premium, and EcoStruxure are trademarks and the property of Schneider Electric SE, its subsidiaries and affiliated companies. All other trademarks are the property of their respective owners.

The information provided in this document contains general descriptions and/or technical characteristics of the performance of the described products or services. For detailed specification, performance and instruction of use, refer to corresponding Catalogs and User Guides if available. To the extent permitted by applicable law, no responsibility or liability is assumed by Schneider Electric and its subsidiaries for any errors or omissions in the informational content of this document or consequences arising out of or resulting from the reliance upon the information contained herein. Schneider Electric reserves the right to make changes or updates with respect to or in the content of this document or the format thereof, at any time without notice.

998-21443821

