

Works with

WiFer™



Sedna Design/Elements

A unique new way
to stand out with style



se.com

Life Is On

Schneider
Electric



Give shape to your customers' desires

Your customers are seeking products that look elegant, make their lives easier, and add comfort and convenience, of course. But what they really want are products with personality, style, and class. Your customers love the look and feel of noble materials, but not their price tag.

Sedna Design/Elements was designed with your customers in mind. Available in a broad palette of finishes, Sedna offers irresistible style. It is the perfect source of inspiration and a must for today's on-trend interiors.

Now you can give your customers everything they need to bring their ideal interior decor to life.



Luxury details in an accessible product range

Sedna Design/Elements is a premium range, with products that come in a variety of contemporary colors and textures that bring the look and feel of wood, stone, metal, and glass into your customers' homes. Your customers will love everything about these beautiful, hyper-realistic finishes, including their affordable pricing.

With Sedna, your customers can bring their ideas to life down to the finishing touches and express their personal style with a range of switches that suits their tastes and budget.

Style

Bold and sophisticated

Sedna is a new generation of electrical switches inspired by fashion and interior design. With modern lines that reflect today's trends and a refined aesthetic, Sedna is more than an afterthought. It is the final touch that adds polish to your customers' interiors.

With two versions to choose from – Design and Elements – you can mix and match insert and cover frame finishes to respond to all of your customers' home decorating styles and preferences, from industrial to vintage, nature, and glam.



Sedna Design



Sedna Elements



Smart home solutions

Greater comfort at home

With Wiser, the new Sedna range is also a simple smart home solution that responds to your customers' needs and lifestyles.

A room's lighting and roller shutters can be controlled via the Wiser smartphone app and "Moments" can be created in just a tap to create the perfect ambiance for different times of day and activities.

Simple to configure and easy to use, Sedna and Wiser are the winning duo for greater comfort and convenience in your customers' homes.



Works with

Wiser™

Functions

Something to meet every need

Switches and outlets, roller shutter switches, plus thermostats and USB chargers... Sedna offers all of the modern functions you need to exceed your customers' expectations and bring greater comfort and convenience to people of all ages.



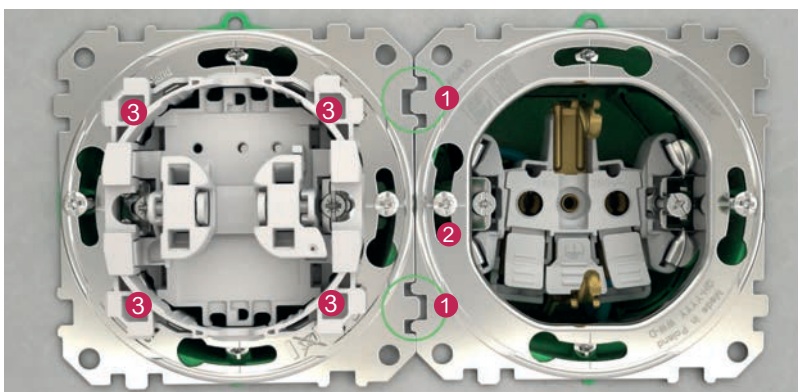
Installation

Save time and deliver an impeccable finish

Sedna goes even further in terms of ergonomics, ease of installation and use, reliability, and quality finishes. And the new Sedna platform was designed with your needs in mind, with features like:

- Universal cover frames for 1 to 5 functions can be installed horizontally or vertically.
- All cover frames for Sedna Design and Sedna Elements are also IP20 and IP44 rated, for four times fewer product numbers.
- Cover frames are mounted using an 8-point clip-in system to ensure that they are perfectly flush with the wall.
- Interlocking mounting frames align perfectly.

These features, combined with quality manufacturing and materials, will very rapidly make Sedna your range of choice for all of your electrical installation projects.



Some new features

- 1 - Interlocking mounting frame, to align multiple devices easily.
- 2 - Screw slots, to compensate wall boxes that have been misaligned.
- 3 - Eight mounting points, for a simple and reliable frame fixing.

Sedna Design/Elements

Because your customers are looking for something new

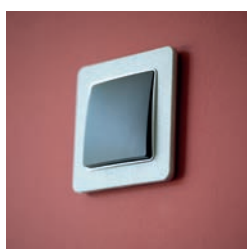
Whether it is fashion or home decor, your customers like to mix things up. Today's homes juxtapose contemporary and vintage pieces and are not afraid to blend luxury items with big-box-store purchases.

And, because your customers are always on the lookout for something new for their home interior, they need switches that reflect the latest trends.

A world of possibilities

When we sat down to design Sedna, one of our goals was to give your customers limitless possibilities by allowing them to combine insert and cover frame finishes in any way that inspires them.

To give you an idea of all that is possible, you can combine a Sedna Elements Wood cover frame with a Wood rocker insert, of course. But why not try it with a Sedna Design Anthracite insert...or any other Sedna insert that complements your customer's room.



Say goodbye to dust

The cover frame edges are rounded, curving around toward the wall. The shape was designed specifically to prevent from dust catching. And the glossy materials were chosen for their good looks, of course, but also for low dust deposition.



Mix it up...even with multi-gang frames

All 1-5 gang cover frames are available in all finishes and can be mixed and matched with all insert finishes.





Sedna Design

Standout style

The Sedna Design range's modern, sophisticated lines and four finishes were designed to complement today's modern interiors and create refined and inviting ambiances. Sedna's gentle contours are a pleasure to touch and the perfect finish is silky smooth.



White



Beige



Aluminium



Anthracite



IP44 protection degree

IP44 protection is provided with any Sedna Design frame when IP44 insert is installed. IP44 inserts are equipped with gaskets to protect the inserts from splash water.

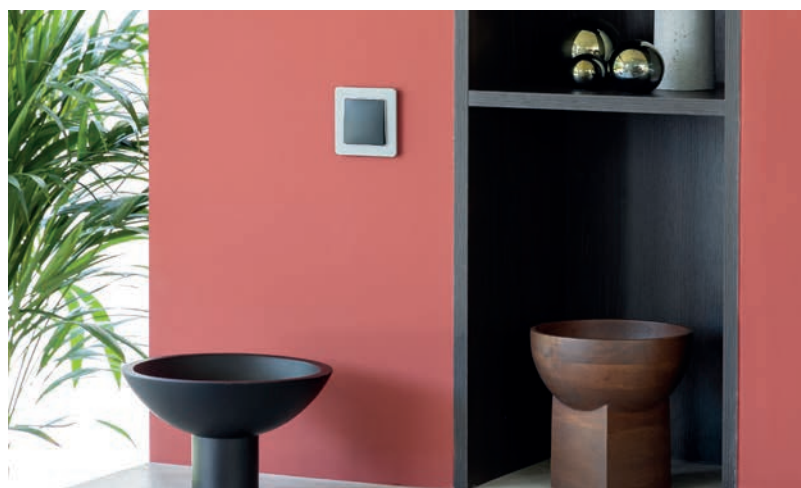
Sedna Elements

Make an impression

A subtle blend of flat and curved shapes in a very structured design gives Sedna Elements an innovative appeal.

The rounded profile creates the illusion that the switch is not flush with the wall but rather floating in front of it, bringing both lightness and elegance.

Sedna Elements finishes look and feel like glass, wood, metal or stone.





Sedna Elements

Wood Impression

If your customers are looking for a warm, authentic interior, there's nothing like the look and feel of wood.

Wood resonates with the human desire to live in alignment with nature and reconnect with our origins. And the color and grain of wood brings a richness that has become a must in today's interiors.



Birch



Birch / Anthracite



Wenge



Wenge / Aluminium



Sedna Elements

Stone Impression

Raw, unfinished materials are ever present in many of today's hottest interior design trends. Slate and its more contemporary cousin, concrete, are solid and grounding. Used in unexpected ways, these materials reveal a different kind of beauty, a lightness even.



Concrete matt / Anthracite



Slate matt / Aluminium



Sedna Elements

Glass Impression

Glass can reflect light or let it through, or both, creating some interesting visual effects. The beautiful glossy finish—in White or Black—will add that “wow” factor to any interior design scheme. The deep, refined Smoke matt finish is undeniably elegant.



White glossy



Smoke matt / Aluminium



Black glossy / Anthracite



Sedna Elements

Metal Impression

Metal is simply on-trend. And metal is uniquely able to bring both energy and class to an interior design scheme. Your customers will love the very glam Brushed Gold finish. And, for something more discreet, you simply can't go wrong with Brushed Aluminium.



Brushed Gold / White



Brushed Aluminium

Sedna range overview

Sedna Design



White



Beige



Aluminium



Anthracite

Sedna Elements

Wood Impression



Wenge



Birch



Metal Impression



Brushed Aluminium



Brushed Gold



Stone Impression



Concrete matt



Slate matt



Glass Impression



White glossy



Smoke matt



Black glossy





Meet your customers'
expectations for comfort
and convenience

Wiser and Sedna: A smart home right from your smartphone

Your customers are looking for simple, attractive solutions that make their lives easier and more enjoyable every day. With new Wiser connected functions, Sedna brings a whole new level of comfort and convenience. Once your customers experience Wiser, they won't know how they ever did without it.

Wiser: Putting the smart in smart home

Wiser is a range of connected switches and sensors that let your customers:

- Manage lighting and roller shutters, either individually or in groups for a single room or the entire home.
- Make the home safer by detecting water leaks, abnormally high temperatures, and windows left open in unoccupied rooms.

All Wiser products are connected via the Wiser IP Gateway and can be controlled anytime from anywhere with a simple smartphone app.

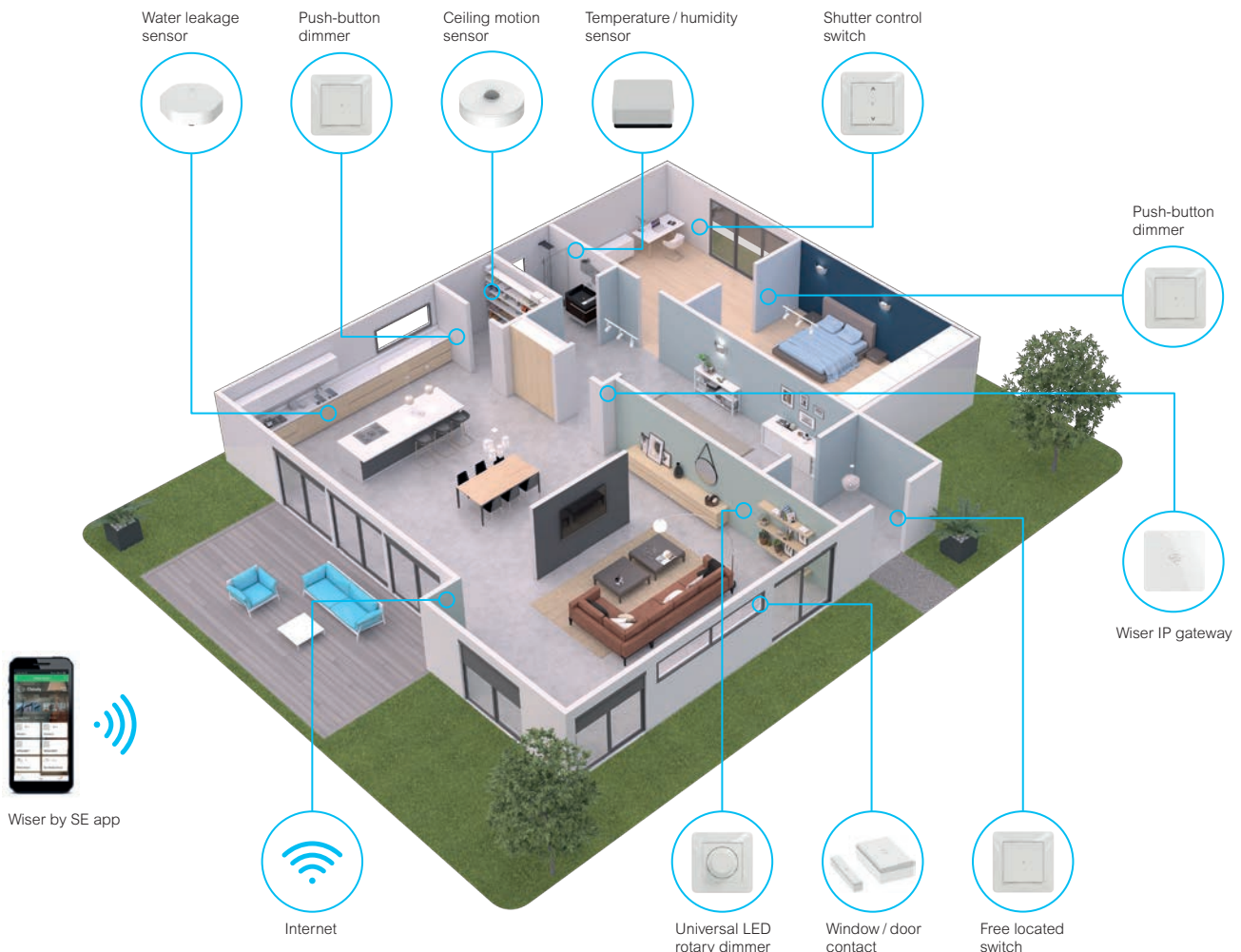
Wiser: A flexible and expandable solution for every home

One of the advantages of Wiser is that you can get your customers started with a few products in a single room and gradually add more products and rooms to the system.

Sensors to detect e.g. water leakage, temperature, humidity or motion can also be added to the Sedna smart home for more comfort and peace of mind.

Works with

Wiser™



Create special Moments for your customers

Wiser is a connected solution that lets you bring your customers a truly personalized and totally versatile experience. With Wiser, you can quickly and easily create ambiances to suit your customers' preferences. And your customers can then activate the ambiance they want in just a click. At any time!

A Moment for every activity

With Moments, your customers will no longer need to go around a room and adjust all of their lights and shutters individually to create the atmosphere they want for a dinner party, movie night, reading, or simply napping on the sofa. Moments combine lighting and shutter controls, making it easier than ever to create the ideal atmosphere for any activity.

Simple, effective connected switches

The wireless free-located switch is easy to install anywhere. It communicates via the Wiser IP Gateway to perform functions like turning off all of the home's light switches at once, for example. The smart plug and Wiser app can be used to switch on a reading lamp when the sun goes down...without ever getting up from the sofa! The smart plug also measures the energy consumption of whatever is plugged in to it and displays energy metering data in the app.



Free located switch



Wiser shutter control switch



Wiser push-button dimmer



Wiser push-button with motion sensor

Fast, easy programming

A few clicks is all it takes to create Moments or program individual or combined functions right from the Wiser app. Once a Moment has been created, your customers can activate it with just a tap on their phone to get the perfect ambiance for movie night or a dinner party instantly.

Control the home - from anywhere at any time

Wiser brings homeowners comprehensive smart home functionalities that can be easily controlled via the Wiser app – from anywhere and at any time.



Easy set-up

Together, Wiser connected switches and the Wiser app form a solution that is easy to install and set up. Try it once and you will never go back!

Simple app set-up

The Wiser app has a simple, intuitive interface that makes it easy to program your customers' solutions. You don't need any training or special tools. The app will take you step by step through a very simple process. Plus, it works on any smartphone or tablet.

Straightforward configuration and adjustment

Once the switches have been installed, simply configure and adjust...there is no need to remove the insert. All adjustments can be made at any time right from the app.



For smartphones and tablets: the Wiser app is available for both Android and iOS devices.



The smart home with Wiser

Wiser is a comprehensive range of connected functions, with one app to control them all. Wiser is an ideal partner for private homes, providing a unique experience of smart control over many facets of residential life.

House and garden

To have your lights illuminated when you come home, simply enter your estimated arrival time. They can also be set to illuminate randomly each day while you're away, giving the illusion that someone is at home. Sedna time control push-button switches also allow you to turn garden lights on and off automatically. Simply schedule via the app, and with the astroclock function, times automatically track with seasonal changes.

The Wiser window or door contact warns you with a push notification on your app, if you have forgotten to close the door or window.

Control all lights

Why not add a free-located switch on the wall next to the front door and program an "all lights off" scene to switch all of the home's lights off at once whenever you go out. The free-located switch is incredibly easy to install. It requires no wiring and programming is super simple.

Living room

"Movie" Moment – the shutters go down; the lights go dim. Just the way you like for a perfect movie night. Roll it.

"Reading" Moment – the indirect lights dim, the spot at the couch switches on, and the shutters open. Feet up.

Kitchen

"Cooking" Moment – the main lights and spots are switched to bright giving plenty of light to create the perfect meal. Bon appétit.

"Dinner party" Moment – tonight's the night; the lights dim, selected spots switch on, and the garden lights complete the scene. Let's party.

The Wiser leakage sensor detects water from any leaking household machine and sends a push notification to your app.

Bedroom

Automatic shutter control

Wiser shutter control push-buttons allow you to open and close individual shutters or groups of shutters by setting your customer's preferences for open and shut times using the Wiser app.

Free-located switch

A free-located switch next to the bed lets you turn off lights or close roller shutters without getting up!

Corridor

Automatic light control during the day

Sedna includes a motion sensor. During the day when movement is detected the light switches on, and off after a set period of time.

Bathroom

The Wiser humidity sensor

detects if the humidity level is too high and sends a notification to your client's smartphone so that he can open the window and protect his bathroom from mold.





1 Wiser IP gateway



2 Wiser universal LED rotary dimmer



3 Wiser push-button dimmer



4 Wiser shutter control switch



5 Wiser push-button dimmer with motion sensor



6 Wiser relay switch with timer function



7 Wiser free located switch



8 Wiser water leakage sensor



9 Wiser temperature / humidity sensor



10 Wiser ceiling motion sensor



11 Wiser window / door contact



12 Wiser smart plug



Wiser Micro module dimmer



Wiser Micro module switch



Wiser Micro module shutter switch

Wiser Mirco modules

Key functions are also available as micro modules to be placed into a wall or ceiling box.





Sedna - Full options

Home sweet home

Sedna's design is modern, of course. But so are its many features. You'll have everything you need to bring your customers exactly what they want—sophisticated lighting, limitless connectivity, and energy savings—now and in the future.

Lighting control

Whether you choose a simple pushbutton or a rotary dimmer, both are designed for all types of lighting, even LED. A motion sensor helps reduce electrical consumption to a bare minimum and makes getting around at night.



1 Pole Switch



1 Pole 3-Circuit
Switch 10AX



Cord Push-Button



Rotary LED Dimmer,
RC/RL 5-200W



Motion Sensor 160°
with Switch, 10A



Night light

Shutter control

Shutter control switches let your customers easily open and close their roller shutters to protect their home from the sun and intruders.



Roller Blind Switch
10AX

Socket-outlets

All socket outlets have shutters to protect your customer's family from inserting toys or tools inside, where metal parts under tension are built in. Also available in an IP44 protected version with lid.



Side earth



Side earth and
2 USB A



IP44, side earth and
cover lid

Double socket-outlets

To limit the number of holes in walls or the use of multiple socket-outlets; also for renovation projects.

Available in white, silver, anthracite, cream, satin birch wood, and wenge wood.



Without frame, side
earth, shut screw



Pin Earth with shutters
multi gang screw

Specialized outlet



Equal Potential
with screw

Multimedia

The Sedna range includes all residential and commercial connections: RJ45 jacks for network cables; HDMI jacks for HDTV and AV equipment; and USB jacks for direct charging of phones and other devices.



Double Loudspeakers
Outlet



Center plate adaptor
for keystones (RJ45,
HDMI, VGA)



Wifi repeater

USB charger

USB charger with smartphone holder is the easy, practical way to get phones off the floor where they can be damaged.



Charger A+A 2,1A



Charger A+C 2,4A



Charger A+C 2,4A with
smartphone holder

Temperature control

The Sedna thermostat maintains a constant, comfortable temperature throughout the home and helps reduce energy consumption by switching the heating on only when needed.



Room thermostat
16A 2-pole



Floor thermostat
16A 2-pole
(incl. floor probe)

Commercial

The key card switch for hotel room can be used in two ways:

- As a room key
- As an energy-saving switch that turns off all room lighting if the room is unoccupied.



Electronic key card
switch 8A w. time delay



Key Card Switch 10AX



It's so easy to install
that you will gain
unbelievable time

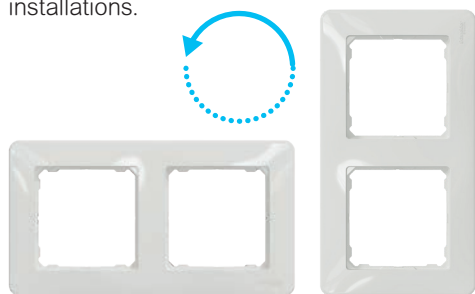
Sedna Design/Elements inserts: designed to meet your needs

At Schneider Electric, we listen to what you have to say, so we understand what you need to be more efficient at work. The new and updated Sedna range is easy to connect, align, fasten, mount, and test! Installation has never been this fast, easy, and convenient.

New features

One universal cover frame for horizontal or vertical installation

With its symmetrical design, the same frame can be used for both horizontal and vertical installations.



Wall compensation

The cover frame will sit flush against the wall, even if the wall box does not.



Interlocking mounting frame

Two notches on each side of the frame make it easy to align multiple devices.



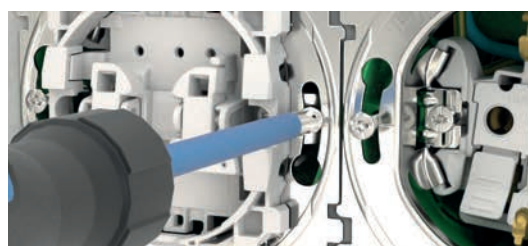
And no more dust

The cover frames shape is designed specifically to prevent from catching dust.



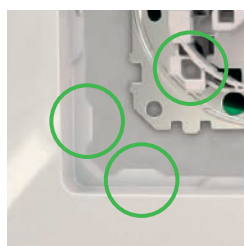
Screw slots

The screw slots allow rotation of the insert in either direction, to compensate for wall boxes that have been misaligned.



8 mounting points

The insertion and fixing of the frame are very easy and reliable thanks to the strong and robust 8 point fixation.



New features

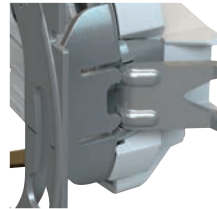
More space for wiring

With a compact design and low profile (24 mm), Sedna switches are easy to wire and mount in the wall box.



Perfect alignment

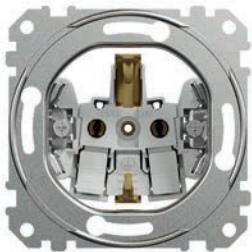
A new mechanism design ensures that claws extend out straight and smooth, for perfect alignment with the wall boxes during assembly.



Socket-outlet

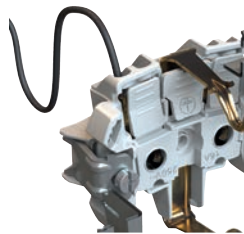
Screwless terminal

Flush-mount inserts are simple, fast, and safe to install. Sedna screwless socket-outlet terminals make wiring easy, quick, and reliable.



Easy-to-use release buttons

The release buttons are easy to access and large so that they are easier to depress. An improved mechanism ensures an even smoother release.



Claws



Protective claws

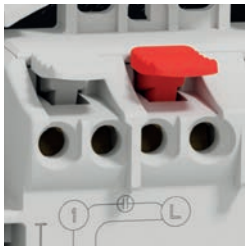
Claws are fully retracted inside the housing so that they cannot catch during installation, for fewer injuries.



Claw-return function

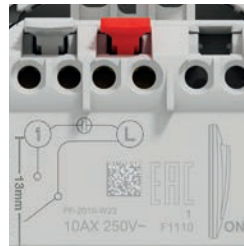
The claw-return function makes mounting and realignment easier.

Switch and pushbutton inserts



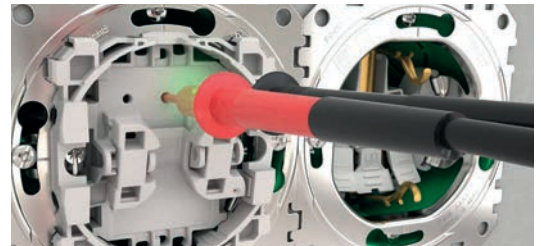
Conical cable entries

Conical cable entries make it easier to feed the connection wires into the terminal blocks.



Wiring diagram

The wiring diagram is printed on the rear of the switch and pushbutton base. Here, the switch type and connection options are clearly visible. Switch inserts have "ON" marking helping to install it faster.



Convenient front-side testing

Checkpoints allow convenient testing of all functions and measuring from the front, with no need to disassemble the switch.



Lighting modules

You can now add one of three different LED lighting modules to the new Sedna pushbutton and switch inserts without having to remove the inserts. This is compatible with both new installations and renovation projects.

- LED module indication light, red
- LED module orientation light, blue
- LED light module for hotel key card switch, blue

Flush mounted boxes

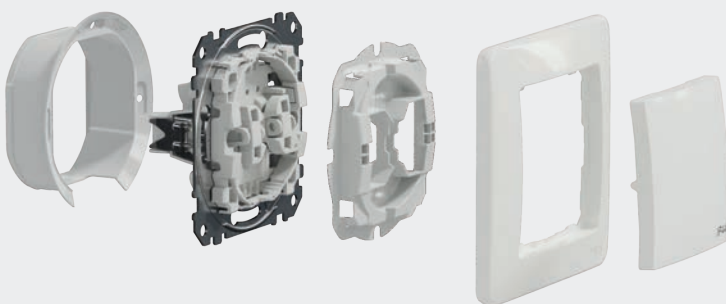
Green Multifix Modulo flush mounted box, brick wall, single 65x45mm and 65x60 mm

Flush mounted box IP30 for brick walls. Comes in 2 depths: 45mm and 60mm to suit all installations. The boxes are interconnectable with each other to obtain a multitigang installation.



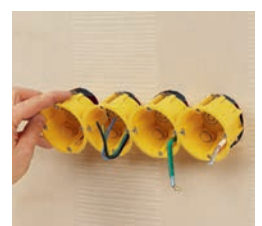
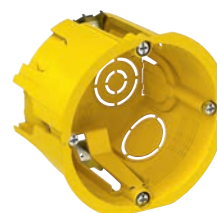
IP44 protection

IP44 protection is provided with any Sedna Design and Sedna Elements frame when IP44 insert is installed. IP44 inserts are equipped with gaskets to protect the inserts from splash water.



Yellow Multifix Plus 2 flush mounted box, hollow wall, single 65x45mm

Flush mounted box IP20 for hollow walls to be used with the jointing piece accessory (IMT35180) to obtain a multitigang installation.



Sedna Design/Elements mechanisms

Mechanism, without frame							
	White	Beige	Aluminium	Anthracite	Birch	Wenge	Brushed alu.
Switches - 250 V~							
One pole switch, w/o screw, 10AX (101)	SDD111101	SDD112101	SDD113101	SDD114101	SDD180101	SDD181101	SDD170101
Two pole switch, w/o screw, 10AX (102)	SDD111102	SDD112102	SDD113102	SDD114102	SDD180102	SDD181102	SDD170102
Two pole switch, w/o screw, 16AX	SDD111162	SDD112162	SDD113162	SDD114162	SDD180162	SDD181162	SDD170162
Two circuit switch, w/o screw, 10AX (105)	SDD111105	SDD112105	SDD113105	SDD114105	SDD180105	SDD181105	SDD170105
Two way switch, w/o screw, 10AX (106)	SDD111106	SDD112106	SDD113106	SDD114106	SDD180106	SDD181106	SDD170106
Two way switch, w/o screw, 16AX	SDD111166	SDD112166	SDD113166	SDD114166	SDD180166	SDD181166	SDD170166
Intermediate switch, w/o screw, 10AX (107)	SDD111107	SDD112107	SDD113107	SDD114107	SDD180107	SDD181107	SDD170107
Double two way switch, w/o screw, 10AX (106+6)	SDD111108	SDD112108	SDD113108	SDD114108	SDD180108	SDD181108	SDD170108
3-circuit switch, 10AX	SDD111103	SDD112103	SDD113103	SDD114103			
Switches with lights - 250 V~ (blue locator, red indicator)							
One pole switch, blue locator light, 10AX	SDD111101L	SDD112101L	SDD113101L	SDD114101L	SDD180101L	SDD181101L	SDD170101L
One pole switch, red indicator light, 10AX	SDD111101N	SDD112101N	SDD113101N	SDD114101N	SDD180101N	SDD181101N	SDD170101N
Two pole switch, red indicator light, 10AX	SDD111102N	SDD112102N	SDD113102N	SDD114102N	SDD180102N	SDD181102N	SDD170102N
Two pole switch, red indicator light, 16AX	SDD111162N	SDD112162N	SDD113162N	SDD114162N	SDD180162N	SDD181162N	SDD170162N
Two circuit switch, blue locator light, 10AX	SDD111105L	SDD112105L	SDD113105L	SDD114105L	SDD180105L	SDD181105L	SDD170105L
Two way switch, blue locator light, 10AX	SDD111106L	SDD112106L	SDD113106L	SDD114106L	SDD180106L	SDD181106L	SDD170106L
Two way switch, blue locator light, 16AX	SDD111166L	SDD112166L	SDD113166L	SDD114166L	SDD180166L	SDD181166L	SDD170166L
Two way switch, red indicator light, 10AX	SDD111106N	SDD112106N	SDD113106N	SDD114106N	SDD180106N	SDD181106N	SDD170106N
Intermediate switch, blue locator light, 10AX	SDD111107L	SDD112107L	SDD113107L	SDD114107L	SDD180107L	SDD181107L	SDD170107L
Pushbuttons - 10AX, 250 V~							
One pole pushbutton, w/o screw (101N)	SDD111111	SDD112111	SDD113111	SDD114111	SDD180111	SDD181111	SDD170111
One pole pushbutton bell symbol, w/o screw	SDD111131	SDD112131	SDD113131	SDD114131	SDD180131	SDD181131	SDD170131
One pole pushbutton light symbol, w/o screw	SDD111132	SDD112132	SDD113132	SDD114132	SDD180132	SDD181132	SDD170132
Two way pushbutton	SDD111116	SDD112116	SDD113116	SDD114116	SDD180116	SDD181116	SDD170116
Pushbutton with cord	SDD111122	SDD112122	SDD113122	SDD114122	-	-	-
Double pushbutton, w/o screw, 10A	SDD111118	SDD112118	SDD113118	SDD114118	SDD180118	SDD181118	SDD170118
Pushbuttons with lights - 10AX, 250 V~							
One pole pushbutton, blue locator light, w/o screw	SDD111111L	SDD112111L	SDD113111L	SDD114111L	SDD180111L	SDD181111L	SDD170111L
One pole pushbutton, blue locator light, bell symbol, w/o screw	SDD111131L	SDD112131L	SDD113131L	SDD114131L	SDD180131L	SDD181131L	SDD170131L
One pole pushbutton, blue locator light, light symbol, w/o screw	SDD111132L	SDD112132L	SDD113132L	SDD114132L	SDD180132L	SDD181132L	SDD170132L
One pole pushbutton, blue locator light, label holder, w/o screw	SDD111133L	SDD112133L	SDD113133L	SDD114133L	SDD180133L	SDD181133L	SDD170133L
Two way pushbutton, blue locator light, w/o screw	SDD111116L	SDD112116L	SDD113116L	SDD114116L	SDD180116L	SDD181116L	SDD170116L
Pushbuttons with lights - 12 V~							
One pole pushbutton, blue locator light, bell symbol, w/o screw, 10A	SDD111141L	SDD112141L	SDD113141L	SDD114141L	SDD180141L	SDD181141L	SDD170141L
One pole pushbutton, blue locator light, label holder, w/o screw, 10A	SDD111143L	SDD112143L	SDD113143L	SDD114143L	-	-	-
Rollerblind controllers - 10A, 250 V~							
Rollerblind switch, w/o screw	SDD111104	SDD112104	SDD113104	SDD114104	SDD180104	SDD181104	SDD170104
Rollerblind pushbutton, w/o screw	SDD111114	SDD112114	SDD113114	SDD114114	SDD180114	SDD181114	SDD170114
Rotary dimmers - 250 V~							
Dimmer, RL, 60-325VA	SDD111501	SDD112501	SDD113501	SDD114501	SDD180501	SDD181501	-
LED dimmer, universal, 5-200W, two way control	SDD111502	SDD112502	SDD113502	SDD114502	SDD180502	SDD181502	-

NEW

Mechanism, without frame	White	Beige	Aluminium	Anthracite	Birch	Wenge	Brushed alu.
Movement detectors - 250 V~							
Movement detector, 160°, 10A	SDD111504	SDD112504	SDD113504	SDD114504	SDD180504	SDD181504	-
Thermostats - 250 V~							
Thermostat, 10A	SDD111506	SDD112506	SDD113506	SDD114506	SDD180506	SDD181506	-
Floor thermostat, 10A	SDD111507	SDD112507	SDD113507	SDD114507	SDD180507	SDD181507	-
Socket outlets - 16A, 250 V~							
2P+F socket outlet with child protection, screw	SDD111021	SDD112021	SDD113021	SDD114021	SDD180021	SDD181021	SDD170021
2P+F socket outlet with child protection, w/o screw	SDD111022	SDD112022	SDD113022	SDD114022	SDD180022	SDD181022	SDD170022
2P+F socket outlet with child protection, with lid, screw	SDD111023	SDD112023	SDD113023	SDD114023	SDD180023	SDD181023	SDD170023
2P+F socket outlet with child protection, with lid, w/o screw	SDD111024	SDD112024	SDD113024	SDD114024	SDD180024	SDD181024	SDD170024
2P+F socket outlet with child protection, screw, red	SDD115021						
2P+F socket outlet, screw	SDD111025	SDD112025	SDD113025	SDD114025	SDD180025	SDD181025	SDD170025
2P+F socket outlet, w/o screw	SDD111026	SDD112026	SDD113026	SDD114026	SDD180026	SDD181026	SDD170026
2x2P+F socket outlet with child protection, screw	SDD311221	SDD312221	SDD313221	SDD314221	SDD380221	SDD381221	-
2P+F socket outlet (side earth), with child protection, double USB charger A+A, w/o screw, 16A/2.4A	SDD111052	SDD112052	SDD113052	SDD114052	SDD180052	SDD181052	SDD170052 NEW
Data outlets and adaptors							
1xRJ45 Cat5e UTP outlet	SDD111451	SDD112451	SDD113451	SDD114451	SDD180451	SDD181451	-
2xRJ45 Cat5e UTP outlet	SDD111452	SDD112452	SDD113452	SDD114452	SDD180452	SDD181452	-
1xRJ45 Cat5e STP outlet	SDD111451S	SDD112451S	SDD113451S	SDD114451S	SDD180451S	SDD181451S	-
2xRJ45 Cat5e STP outlet	SDD111452S	SDD112452S	SDD113452S	SDD114452S	SDD180452S	SDD181452S	-
1xRJ45 Cat6 UTP outlet	SDD111461	SDD112461	SDD113461	SDD114461	SDD180461	SDD181461	-
2xRJ45 Cat6 UTP outlet	SDD111462	SDD112462	SDD113462	SDD114462	SDD180462	SDD181462	-
1xRJ45 Cat6 STP outlet	SDD111461S	SDD112461S	SDD113461S	SDD114461S	SDD180461S	SDD181461S	-
2xRJ45 Cat6 STP outlet	SDD111462S	SDD112462S	SDD113462S	SDD114462S	SDD180462S	SDD181462S	-
1xRJ45 Cat6A UTP outlet	SDD111466	SDD112466	SDD113466	SDD114466	SDD180466	SDD181466	- NEW
2xRJ45 Cat6A UTP outlet	SDD111467	SDD112467	SDD113467	SDD114467	SDD180467	SDD181467	- NEW
1xRJ45 Cat6A STP outlet	SDD111466S	SDD112466S	SDD113466S	SDD114466S	SDD180466S	SDD181466S	- NEW
2xRJ45 Cat6A STP outlet	SDD111467S	SDD112467S	SDD113467S	SDD114467S	SDD180467S	SDD181467S	- NEW
1xRJ45 adaptor, KRONE inserts	SDD111441C	SDD112441C	SDD113441C	SDD114441C	SDD180441C	SDD181441C	-
1xRJ45 adaptor, RDM inserts	SDD111442C	SDD112442C	SDD113442C	SDD114442C	SDD180442C	SDD181442C	-
1xRJ45 adaptor, SYSTIMAX inserts	SDD111443C	SDD112443C	SDD113443C	SDD114443C	SDD180443C	SDD181443C	-
2xRJ45 adaptor, AMP, MOLEX, KELINE inserts	SDD111444C	SDD112444C	SDD113444C	SDD114444C	SDD180444C	SDD181444C	-
Keystone adaptor	SDD111421	SDD112421	SDD113421	SDD114421	SDD180421	SDD181421	- NEW
Phone socket outlets							
1xRJ11 outlet	SDD111491	SDD112491	SDD113491	SDD114491	SDD180491	SDD181491	-
2xRJ11 outlet	SDD111492	SDD112492	SDD113492	SDD114492	SDD180492	SDD181492	-
Combined outlets							
TV/RJ45 Cat6 UTP combined outlet	SDD111469T	SDD112469T	SDD113469T	SDD114469T	SDD180469T	SDD181469T	- NEW
RJ11/RJ45 Cat5e UTP combined outlet	SDD111458	SDD112458	SDD113458	SDD114458	SDD180458	SDD181458	-
RJ11/RJ45 Cat6 UTP combined outlet	SDD111468	SDD112468	SDD113468	SDD114468	SDD180468	SDD181468	-

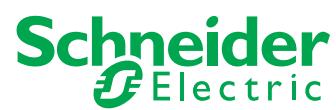
Mechanism, without frame	White	Beige	Aluminium	Anthracite	Birch	Wenge	Brushed alu.	
Antenna-socket outlets								
TV outlet, ending, 1 dB	SDD111471	SDD112471	SDD113471	SDD114471	SDD180471	SDD181471	-	
TV outlet, intermediate, 4 dB	SDD111474	SDD112474	SDD113474	SDD114474	SDD180474	SDD181474	-	
TV outlet, intermediate, 8 dB	SDD111478	SDD112478	SDD113478	SDD114478	SDD180478	SDD181478	-	
TV/R outlet, ending, 1 dB	SDD111471R	SDD112471R	SDD113471R	SDD114471R	SDD180471R	SDD181471R	-	
TV/R outlet, intermediate, 4 dB	SDD111474R	SDD112474R	SDD113474R	SDD114474R	SDD180474R	SDD181474R	-	
TV/R outlet, intermediate, 8 dB	SDD111478R	SDD112478R	SDD113478R	SDD114478R	SDD180478R	SDD181478R	-	
TV/SAT outlet, ending, 1 dB	SDD111471S	SDD112471S	SDD113471S	SDD114471S	SDD180471S	SDD181471S	-	
TV/SAT outlet, intermediate, 4 dB	SDD111474S	SDD112474S	SDD113474S	SDD114474S	SDD180474S	SDD181474S	-	
TV/SAT outlet, intermediate, 8 dB	SDD111478S	SDD112478S	SDD113478S	SDD114478S	SDD180478S	SDD181478S	-	
TV/R/SAT outlet, ending, 1 dB	SDD111481	SDD112481	SDD113481	SDD114481	SDD180481	SDD181481	-	
TV/R/SAT outlet, intermediate, 4 dB	SDD111484	SDD112484	SDD113484	SDD114484	SDD180484	SDD181484	-	
TV/R/SAT outlet, intermediate, 8 dB	SDD111488	SDD112488	SDD113488	SDD114488	SDD180488	SDD181488	-	
TV/SAT/SAT outlet, ending, 1 dB	SDD111481S	SDD112481S	SDD113481S	SDD114481S	SDD180481S	SDD181481S	-	
Other functions								
Double loudspeaker outlets, w/o screw	SDD111411	SDD112411	SDD113411	SDD114411	SDD180411	SDD181411	-	
Cable outlets	SDD111903	SDD112903	SDD113903	SDD114903	SDD180903	SDD181903	-	
Blind cover	SDD111904	SDD112904	SDD113904	SDD114904	SDD180904	SDD181904	-	
Time switch, 10A	SDD111508	SDD112508	SDD113508	SDD114508	SDD180508	SDD181508	-	NEW
Card switch, 10AX	SDD111121	SDD112121	SDD113121	SDD114121	SDD180121	SDD181121	-	
Card switch with delay, 8A	SDD111121E	SDD112121E	SDD113121E	SDD114121E	SDD180121E	SDD181121E	-	NEW
Double USB charger, A+A, 2.1A	SDD111401	SDD112401	SDD113401	SDD114401	SDD180401	SDD181401	-	
Double USB charger, A+C, 2.4A	SDD111402	SDD112402	SDD113402	SDD114402	SDD180402	SDD181402	-	NEW
45x45 adaptor (for Unica or Altira)	SDD111905	SDD112905	SDD113905	SDD114905	-	-	-	NEW
EPH outlets	SDD111061	-	-	-	-	-	-	NEW
Night light, 250V~ - 3W	SDD111906							
Rockers								
Rocker for TV-R outlets	SDD111433C	SDD112433C	SDD113433C	SDD114433C	SDD180433C	SDD181433C	-	NEW
Rocker for TV-R-SAT outlets	SDD111435C	SDD112435C	SDD113435C	SDD114435C	SDD180435C	SDD181435C	-	NEW
Rocker for TV-SAT outlets	SDD111434C	SDD112434C	SDD113434C	SDD114434C	SDD180434C	SDD181434C	-	NEW
Rocker for dimmers	SDD111503	SDD112503	SDD113503	SDD114503	SDD180503	SDD181503	-	NEW
Wiser functions								
Wiser switch	SDD111388	SDD112388	SDD113388	SDD114388	SDD180388	SDD181388	-	NEW
Wiser LED dimmer, 7-200W	SDD111382	SDD112382	SDD113382	SDD114382	SDD180382	SDD181382	-	NEW
Wiser movement detector, 160°, 10A	SDD111384	SDD112384	SDD113384	SDD114384	SDD180384	SDD181384	-	NEW
Wiser blind controller, 500W	SDD111385	SDD112385	SDD113385	SDD114385	SDD180385	SDD181385	-	NEW
IP44 functions								
One pole switch, w/o screw, 10AX	SDD211101	SDD212101	SDD213101	SDD214101	-	-	-	
Two pole switch, w/o screw, 10AX	SDD211102	SDD212102	SDD213102	SDD214102	-	-	-	
Two circuit switch, w/o screw, 10AX	SDD211105	SDD212105	SDD213105	SDD214105	-	-	-	
Two way switch, w/o screw, 10AX	SDD211106	SDD212106	SDD213106	SDD214106	-	-	-	
Intermediate switch, w/o screw, 10AX	SDD211107	SDD212107	SDD213107	SDD214107	-	-	-	
One pole pushbutton bell symbol, w/o screw, 10A	SDD211131	SDD212131	SDD213131	SDD214131	-	-	-	
One pole pushbutton light symbol, w/o screw, 10A	SDD211132	SDD212132	SDD213132	SDD214132	-	-	-	
2P+F socket outlet with child protection, with lid, screw, 16A	SDD211023	SDD212023	SDD213023	SDD214023	-	-	-	
2P+F socket outlet with child protection, with lid, w/o screw, 16A	SDD211024	SDD212024	SDD213024	SDD214024	-	-	-	

Sedna Design / Elements cover frames

IP20 and IP44 universal frames	1 gang	2 gangs	3 gangs	4 gangs	5 gangs
White	SDD311801	SDD311802	SDD311803	SDD311804	SDD311805
Beige	SDD312801	SDD312802	SDD312803	SDD312804	SDD312805
Aluminium	SDD313801	SDD313802	SDD313803	SDD313804	SDD313805
Anthracite	SDD314801	SDD314802	SDD314803	SDD314804	SDD314805
Birch	SDD380801	SDD380802	SDD380803	SDD380804	SDD380805
Wenge	SDD381801	SDD381802	SDD381803	SDD381804	SDD381805
Brushed aluminium	SDD370801	SDD370802	SDD370803	SDD370804	SDD370805
Brushed gold	SDD371801	SDD371802	SDD371803	SDD371804	SDD371805
White glass	SDD360801	SDD360802	SDD360803	SDD360804	SDD360805
Black glass	SDD361801	SDD361802	SDD361803	SDD361804	SDD361805
Smoked glass	SDD362801	SDD362802	SDD362803	SDD362804	SDD362805
Concrete	SDD390801	SDD390802	SDD390803	SDD390804	SDD390805
Slate	SDD391801	SDD391802	SDD391803	SDD391804	SDD391805
Frames with mobile holder					
White	SDD311809	-	-	-	-
Beige	SDD312809	-	-	-	-
Aluminium	SDD313809	-	-	-	-
Anthracite	SDD314809	-	-	-	-
Universal wall mounting boxes					
White	SDD111901	SDD111901+ SDD111902	SDD111901+ 2x SDD111902	SDD111901+ 3x SDD111902	SDD111901+ 4x SDD111902
Beige	SDD112901	SDD112901+ SDD112902	SDD112901+ 2x SDD112902	SDD112901+ 3x SDD112902	SDD112901+ 4x SDD112902
Aluminium	SDD113901	SDD113901+ SDD113902	SDD113901+ 2x SDD113902	SDD113901+ 3x SDD113902	SDD113901+ 4x SDD113902
Anthracite	SDD114901	SDD114901+ SDD114902	SDD114901+ 2x SDD114902	SDD114901+ 3x SDD114902	SDD114901+ 4x SDD114902



Life Is On



se.com/sedna

Schneider Electric
35, rue Joseph Monier
F-92505 Rueil-Malmaison Cedex
Tel. + 33 (0) 1 41 29 70 00
Fax + 33 (0) 1 41 29 71 00

© 2020 Schneider Electric. All rights reserved. Life Is On Schneider Electric and Harmony are trademarks and the property of Schneider Electric SE, its subsidiaries and affiliated companies. All other trademarks are the property of their respective owners. 03/2020 - xxxxxxxx