



# DIGITAL

How digital transformation creates new value  
in food and beverage manufacturing

EcoStruxure™ for Food & Beverage

[se.com/food-and-beverage](https://se.com/food-and-beverage)

Life Is On

**Schneider**  
Electric

# Table of contents

How is technology serving up new opportunities in food and beverage?

01

Unprecedented visibility and actionable data

Meeting the challenges, sharing the spoils

02

Interoperable solutions for improved efficiency

Convergence of people, processes, and systems

03

Unlocking full potential with complete connectivity

Tackling risk. Taking the devil out of the details.

04

Data insights for mitigating accountability

Automation and robotics revolutionize the factory floor

05

Latest technologies for boosting performance

Equipment insights drive higher return on capital investment

06

Fundamentals of asset performance strategy

Create new business value with Schneider Electric

07

The benefits of digital transformation

# New challenges bring new opportunities

Changing customer behaviors, new regulations, growing scarcity of resources... To address these challenges, food and beverage producers need to focus on increasing business efficiency and reducing costs. **Digital transformation** is the way to achieve these objectives.

At Schneider Electric, we help to realize the potential of bringing your systems and processes together. EcoStruxure, our IoT-enabled, open, and interoperable system architecture and platform, helps increase plant and supply chain connectivity, driving better efficiencies through improved operational performance.

By using technology to drive convergence of IT and operations, you connect the business and improve your capabilities exponentially. Digitize existing plant and integrate modern automation and robotic systems – where it makes sense.



New challenges  
in food and  
beverage



Unlock new  
opportunities  
with digital  
transformation



Meeting the  
challenges, sharing  
the spoils



Convergence of  
people, processes,  
and systems



Tackling risk.  
Taking the devil  
out of the details.



Revolutionizing  
the factory floor



Increasing  
return on capital  
investment



Creating new  
business value



# New challenges bring new opportunities

**EcoStruxure for Food & Beverage** enables digital transformation at every step of your value chain for improved sustainability, efficiency, traceability. From farm to fork.

## Sustainability and efficiency

Optimize your plant footprints with improved process, utilities, and supply chain efficiency, thanks to full visibility into asset data.

## Food safety and consumer information

Protect consumer and shareholder value. Digital transformation allows you to track every step of the supply chain, from raw materials to the customer. And, every step of the manufacturing process, from sourcing to labeling.

## Workforce dynamic

Attract younger, tech-savvy, digital-native workforce through innovation, and retain talent by breaking information silos, while enabling the right business decisions.

## Delivering the brand promise

Meet customers' rising demands for quality and sustainability. Ever-changing dietary trends and environmental regulations set higher requirements for manufacturing processes and demand greater flexibility.

## Operational excellence

Pinpoint inefficiencies and set new benchmarks in the face of the increasing complexity of manufacturing processes.

## Total cost of ownership

Reduce CapEx while prolonging the life span of existing assets and reduce overall costs with streamlined operations and reduced energy waste.

New challenges  
in food and  
beverage



Unlock new  
opportunities  
with digital  
transformation



Meeting the  
challenges, sharing  
the spoils



Convergence of  
people, processes,  
and systems



Tackling risk.  
Taking the devil  
out of the details.



Revolutionizing  
the factory floor



Increasing  
return on capital  
investment



Creating new  
business value



# How is technology serving up new opportunities in food and beverage?

New challenges in food and beverage



Unlock new opportunities with digital transformation



Meeting the challenges, sharing the spoils



Convergence of people, processes, and systems



Tackling risk. Taking the devil out of the details.



Revolutionizing the factory floor



Increasing return on capital investment



Creating new business value



# How is technology serving up new opportunities in food and beverage?

Working in food and beverage manufacturing, you are continually having to juggle priorities. From the consumer perspective, you need to deliver a diversity of products and smaller batch numbers, with a constant eye on quality and traceability of ingredients.

At the same time, you are managing productivity levels of existing machinery, and evaluating how innovations in automation and new processes such as robotics could move your business forward.

However you are currently operating, it's likely that by connecting systems and processes, you could make a step-change in efficiency levels. Incorporating new technology provides unprecedented visibility into production, and the actionable data you need to be more agile in response to market demands – at a much lower cost.

Our EcoStruxure platform connects the three layers of innovation in IoT-enabled solutions – connected products; edge control; and apps, analytics & services – to help drive full IoT integration and provide you with the real-time data you need to make better business decisions.



[Read our smart machines white paper](#)

To remain competitive and profitable, plants and machines will have to be smarter – better connected, more efficient, more flexible, and safer.

New challenges in food and beverage



Unlock new opportunities with digital transformation



Meeting the challenges, sharing the spoils



Convergence of people, processes, and systems



Tackling risk. Taking the devil out of the details.



Revolutionizing the factory floor



Increasing return on capital investment



Creating new business value

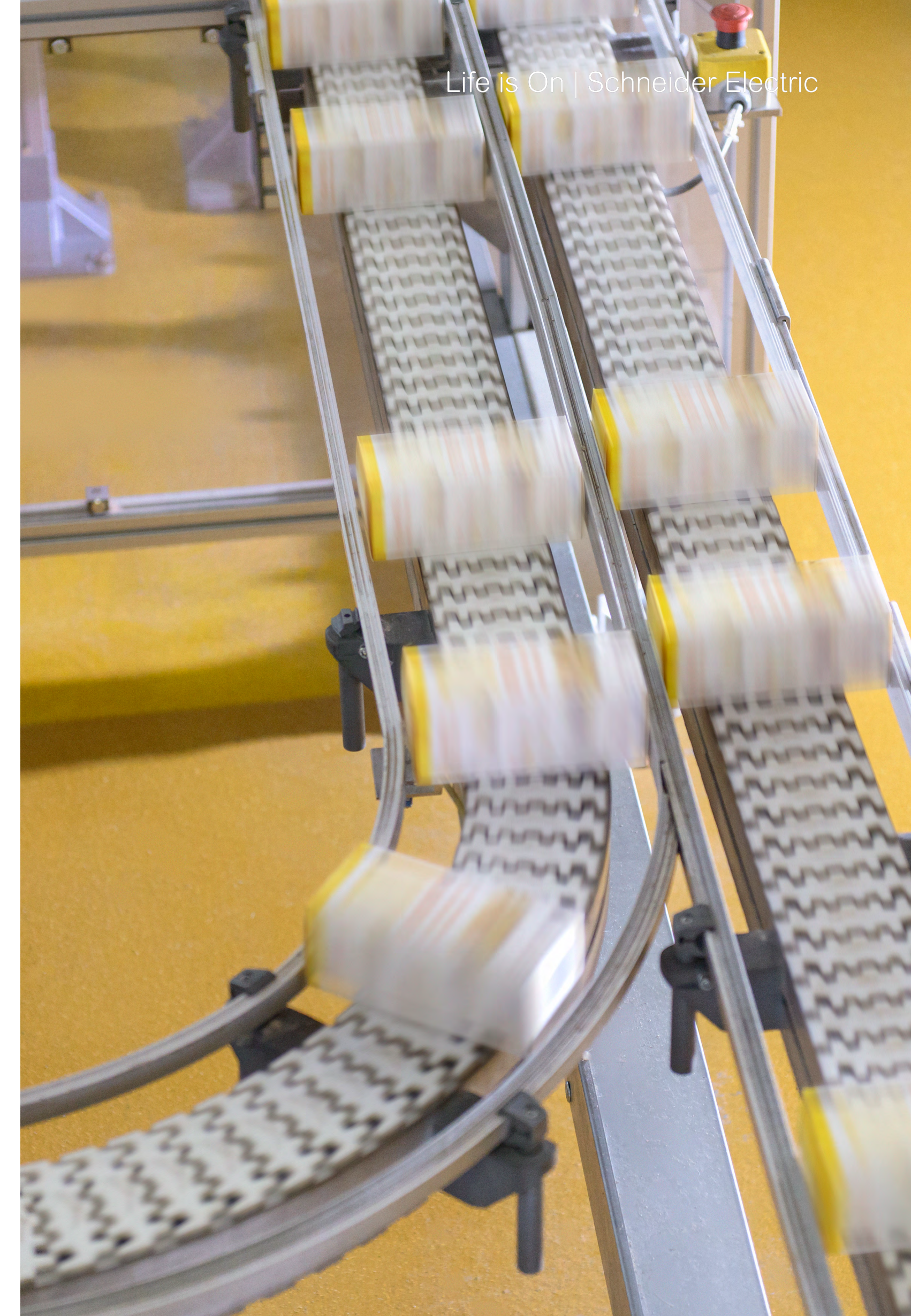


# Tasting note #1

New opportunities for picking and packing in food and beverage:  
Meet the new generation of integrated robot and machine control. (1/2)

Over the past 10 years, there have been significant increases in the speed and flexibility demands of packaging lines that are challenging the use of traditional PLCs.

With packaging, the most fertile ground for added profit in food and beverage, there are increasing demands for faster lines that require multiple robots and sequenced motion axes. These need to fit into existing factories that have limited space, and be fully IIoT-enabled. Consequently, PLC-based control is being replaced by a new generation of ultrahigh-performance motion and **robotic controllers with PLC sequence capability**. These can handle more complex applications, at higher production speeds, in a smaller space. Plus there is also fast payback and a better return-on-investment.



New challenges  
in food and  
beverage



Unlock new  
opportunities  
with digital  
transformation



Meeting the  
challenges, sharing  
the spoils



Convergence of  
people, processes,  
and systems



Tackling risk.  
Taking the devil  
out of the details.



Revolutionizing  
the factory floor



Increasing  
return on capital  
investment



Creating new  
business value



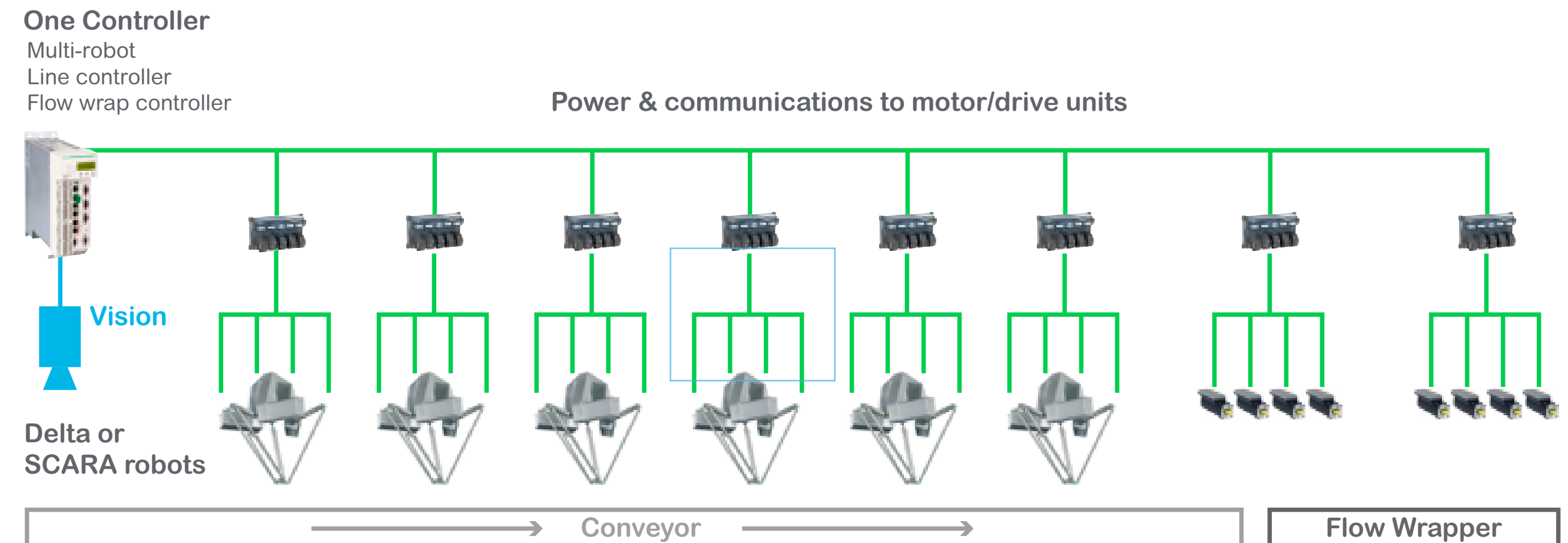
# Tasting note #1

New opportunities for picking and packing in food and beverage:  
Meet the new generation of integrated robot and machine control. (2/2)

Schneider Electric's compact PacDrive3 is leading the way in this technology, and can be used to control a series of Schneider Electric picking robots and a wrapping machine, all from one controller.

What's more, by using motors with integrated drive electronics, panel space is kept to an absolute minimum.

## New generation of high performance robot, motion, sequence controllers



[Discover PacDrive3, a complete automation solution for motion-centric machines](#)

New challenges in food and beverage



Unlock new opportunities with digital transformation



Meeting the challenges, sharing the spoils



Convergence of people, processes, and systems



Tackling risk. Taking the devil out of the details.



Revolutionizing the factory floor



Increasing return on capital investment



Creating new business value



# Meeting the challenges, sharing the spoils

New challenges  
in food and  
beverage



Unlock new  
opportunities  
with digital  
transformation



Meeting the  
challenges, sharing  
the spoils



Convergence of  
people, processes,  
and systems



Tackling risk.  
Taking the devil  
out of the details.



Revolutionizing  
the factory floor



Increasing  
return on capital  
investment



Creating new  
business value



# Meeting the challenges, sharing the spoils

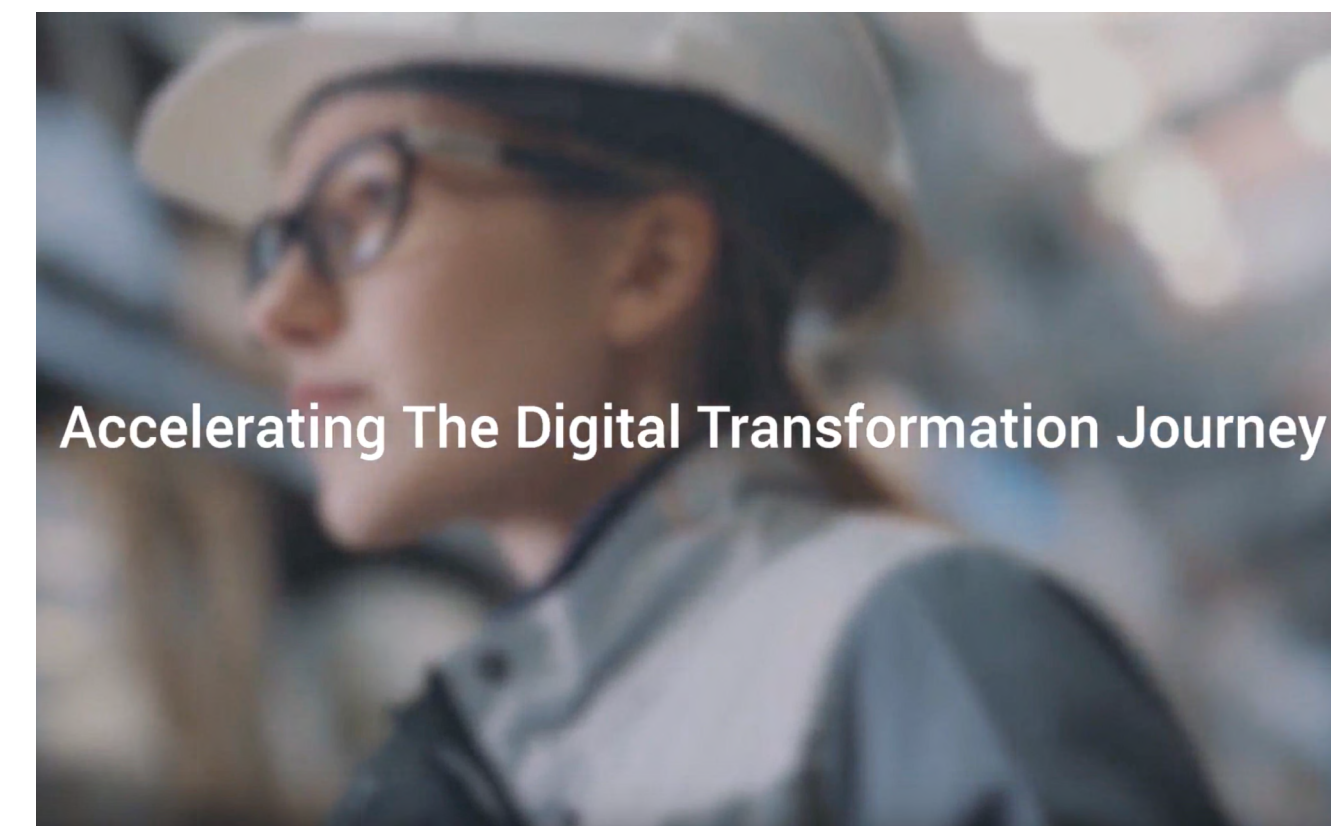
Within the business, different stakeholders will have different challenges. With digital transformation comes the opportunity for IT and plant professionals to work together and get mutual benefits.

On the factory floor, the key considerations will include uptime, safety, and product quality. IT will be just as concerned with data collection, cybersecurity and systems integration where legacy systems are involved.

The Industrial Internet of Things (IIoT) is helping to overcome the key business issues all plant staff face, with new technologies supporting substantial improvements in production efficiency, process reliability, and safety.

New, interoperable solutions integrate faster and easier than outdated alternatives. In addition, advances in intelligent maintenance and monitoring enable companies to future-proof their investments, by prolonging equipment life and deferring future CapEx. But it can only happen when IT and OT collaborate.

The most successful manufacturing enterprises in the future will be those that have seamlessly integrated IT and OT where OT is actually driving the IT agenda.



Accelerating The Digital Transformation Journey

[Watch the video](#)

By connecting sales order and forecasting systems direct to production scheduling and batch control, a major F&B producer streamlined production and improved efficiency.

New challenges  
in food and  
beverage



Unlock new  
opportunities  
with digital  
transformation



Meeting the  
challenges, sharing  
the spoils



Convergence of  
people, processes,  
and systems



Tackling risk.  
Taking the devil  
out of the details.



Revolutionizing  
the factory floor



Increasing  
return on capital  
investment



Creating new  
business value



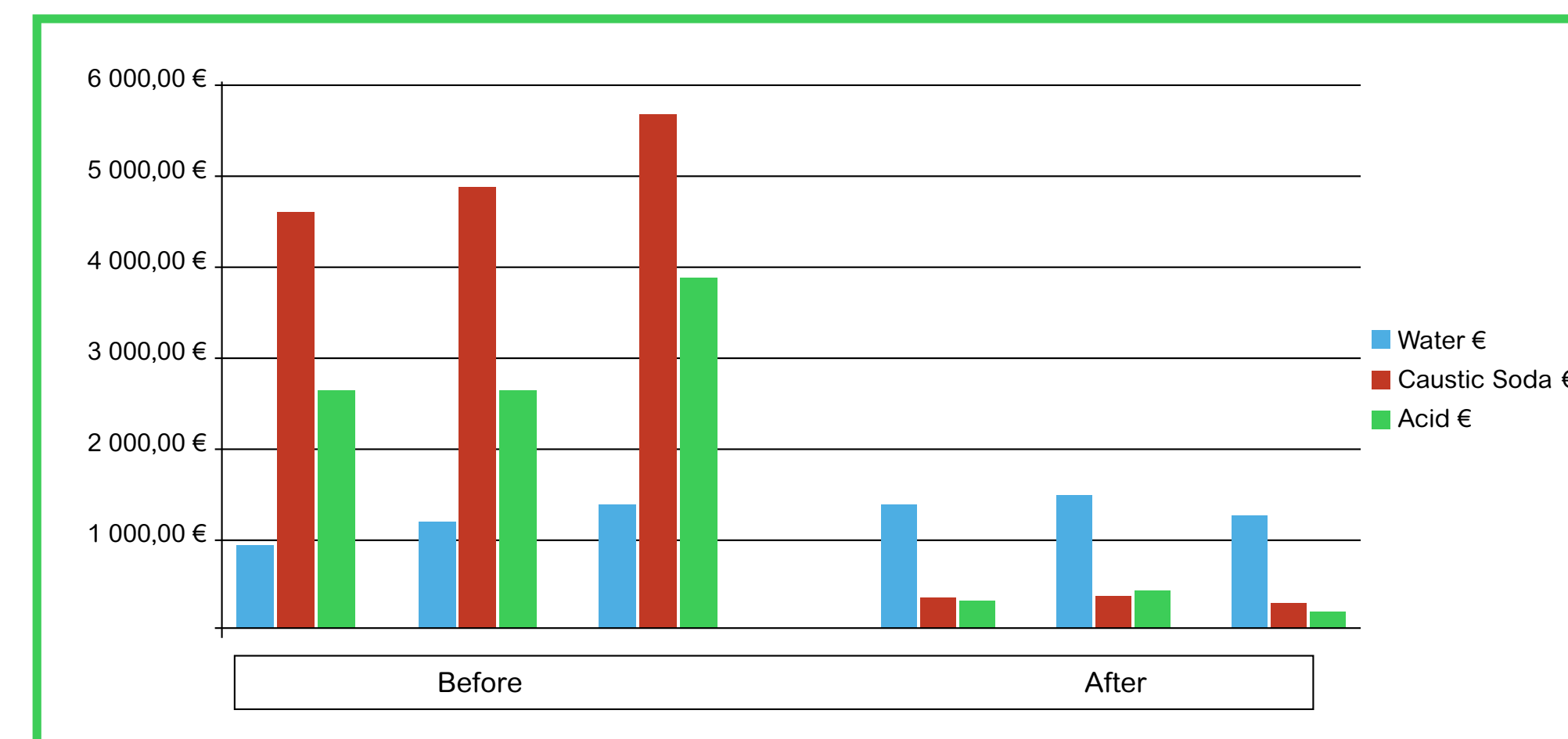
# Tasting note #2

Optimize and reduce costs.

Clean-in-Place (CIP) is essential, but in lean manufacturing terms, it's waste. CIP technology innovation now enables plant operators to calculate the optimal mix of water, chemicals, temperature, and flow. This reduces the time spent cleaning, and the energy, water, and chemicals used.

At the same time, it saves costs, reduces environmental impact, and increases productivity. All the steps in the process can be easily traced and automatically documented, simplifying auditing requirements. Here, digital transformation has a direct, tangible impact on output and plant running costs.

## Monthly costs before and after CIP optimization



[Discover EcoStruxure™ Clean-in-Place Advisor](#)

New challenges in food and beverage



Unlock new opportunities with digital transformation



Meeting the challenges, sharing the spoils



Convergence of people, processes, and systems



Tackling risk. Taking the devil out of the details.



Revolutionizing the factory floor



Increasing return on capital investment



Creating new business value



# Convergence of people, processes, and systems

New challenges in food and beverage



Unlock new opportunities with digital transformation



Meeting the challenges, sharing the spoils



Convergence of people, processes, and systems



Tackling risk. Taking the devil out of the details.



Revolutionizing the factory floor



Increasing return on capital investment



Creating new business value



# Convergence of people, processes, and systems

Convergence works at a number of levels; people-orientated and process-orientated. But when the right people and the right systems are in alignment, the whole business benefits.

The convergence of networks and systems depends on communication protocols that are compatible with one another. Without this, data stays isolated and sharing with key stakeholders to support strategic decision-making in real time is impossible.

However, when IT and OT networks and systems are integrated, and smart sensors installed, downtime and energy consumption are reduced, manufacturing flexibility improved, and operator safety and preventative maintenance increased.

Our EcoStruxure platform and the Industrial Internet of Things connect inventory to smart sensors across the supply chain, making it easier than ever to bring goods to market faster, with lower production costs. Additionally, digitally, driven plants, with their seamless record-keeping and real-time monitoring, ease regulatory compliance and mitigate environmental impacts.



[Read the Berto Coffee Roaster case study](#)

Berto builds a fully digitized and automated coffee roaster that improves production output, quality, and consistency, adding value for the competitive export market.

New challenges in food and beverage



Unlock new opportunities with digital transformation



Meeting the challenges sharing the spoils



Convergence of people, processes and systems



Tackling risk. Taking the devil out of the details



Revolutionizing the factory floor



Increasing return on capital investment



Creating new business value



# Tasting note #3

Robust system and software integration.

Integration is occurring at a number of levels as technology enables devices to do more than what they were originally designed for.

[Variable Speed Drives](#) now feature embedded intelligence to monitor the external condition and predict equipment failures long before they cause disruption. They can also help operators and maintenance by generating QR codes dynamically to pinpoint support documentation. In the same way, PLCs directly connect to the cloud and have web protocols and cybersecurity built in.

Beyond hardware integration, EcoStruxure delivers the higher-level system and software integration that is the next step in merging factory floor operations with the enterprise and wider supply chain.



[Discover EcoStruxure™ Hybrid DCS](#)

New challenges in food and beverage



Unlock new opportunities with digital transformation



Meeting the challenges sharing the spoils



Convergence of people, processes and systems



Tackling risk. Taking the devil out of the details



Revolutionizing the factory floor



Increasing return on capital investment



Creating new business value



# Tackling risk. Taking the devil out of the details.

New challenges  
in food and  
beverage



Unlock new  
opportunities  
with digital  
transformation



Meeting the  
challenges, sharing  
the spoils



Convergence of  
people, processes,  
and systems



Tackling risk.  
Taking the devil  
out of the details.



Revolutionizing  
the factory floor



Increasing  
return on capital  
investment



Creating new  
business value



# Tackling risk. Taking the devil out of the details.

Protecting the business from risk is central to survival in food and beverage. Today, that means identifying and recording every relevant piece of information about a product, an ingredient, or a process.

## Track and trace

Track and trace technology enables you to document evidence of food safety compliance and record the right information. In this way, you can communicate more transparently with regulatory authorities and reduce exposure in the event of product withdrawals or recall procedures.

## Compliance

With requirements frequently changing, you need systems that support stringent regulation and standards compliance, such as tamper-proof documentation, critical parameters recording, critical control points management, devices calibration, equipment design and maintenance.

## Mislabelling

How can you best ensure that applied labels correspond to the actual contents of each product, and uniquely identify each product? With the right digital solution, you are able to reliably track and trace every product, using less energy and fewer resources, from end to end, across the entire value chain.



[Read the Yashili Dairy case study](#)

“From a process control perspective an infant formula plant is fairly complex. Manufacturing six sophisticated products in the same facility – each with a different recipe – demands great accuracy”.

Kerry Morrison, Services Manager at Yashili plant

New challenges in food and beverage



Unlock new opportunities with digital transformation



Meeting the challenges sharing the spoils



Convergence of people, processes and systems



Tackling risk. Taking the devil out of the details



Revolutionizing the factory floor



Increasing return on capital investment



Creating new business value



# Tasting note #4

Moving from paper to digital in order to streamline workflow. (1/2)

Digital batch recording offers significant advantages over paper procedures. Full-featured digital recorder products enable operators to record individual batches with a start-and-stop button on the screen or by external input via a bar code scanner. Working in this way saves time for quality control personnel and gives them all the data they need for simple reporting and standards compliance.



The main advantage of digital batch recording and signing is that it saves time for quality personnel and gives them all the data they need for easy reporting and compliance to standards.



Seven ways that digital data recording benefits food and beverage manufacturers

[Download our white paper](#)

New challenges in food and beverage



Unlock new opportunities with digital transformation



Meeting the challenges sharing the spoils



Convergence of people, processes and systems



Tackling risk. Taking the devil out of the details



Revolutionizing the factory floor



Increasing return on capital investment



Creating new business value



# Tasting note #4

Moving from paper to digital in order to streamline workflow. (2/2)

Asset tests, such as calibration of devices used for critical control point measurement, can be simplified through the use of a cloud-based digital service platform. Centralizing equipment test and compliance management in a paperless solution increases the efficiency of data collection, approvals, and workflow, allowing you to focus your time and effort on other tasks.

Online access to compliance documentation enables you to be ready for audits, giving you peace of mind that the required test evidence or device calibration certificates are quickly available to hand. Information is accessible via a QR code located on the equipment and the documents can be easily shared directly from the cloud to your PCs and smart devices.



EcoStruxure Manufacturing Compliance Advisor helps reduce costs, increase productivity, and improve audit readiness

[Watch the video](#)

New challenges in food and beverage



Unlock new opportunities with digital transformation



Meeting the challenges sharing the spoils



Convergence of people, processes and systems



Tackling risk. Taking the devil out of the details



Revolutionizing the factory floor



Increasing return on capital investment



Creating new business value



# Automation and robotics revolutionize the factory floor

New challenges in food and beverage



Unlock new opportunities with digital transformation



Meeting the challenges, sharing the spoils



Convergence of people, processes, and systems



Tackling risk. Taking the devil out of the details.



Revolutionizing the factory floor



Increasing return on capital investment



Creating new business value





# Automation and robotics revolutionize the factory floor

Exploring the advantages of new trends in automation works at two levels – the technological level and the functional level. At the technological level, there's the impact of advancements on the technology and topology of the automation platform. The functional level concerns the incremental functionality that can be delivered on the automation platform to improve operational and business value. IIoT provides significant transformation at both levels, with the net impact being a significant increase in the value industrial companies derive from automation.

In picking and packaging, for example, traditional PLC-based control architecture is being replaced by a new generation of ultra-high-performance motion and robotic controllers, that also have PLC sequence capability. Smaller, more flexible, and easier to integrate, these controllers offer increased performance and a faster payback over traditional solutions.

Ultimately, not only do these controllers outstrip the PLC for this control, but they also offer full IIoT connectivity and provide invaluable digital tools for remote tracking, monitoring, optimization and remote services including the latest augmented reality support tools.

New challenges in food and beverage



Unlock new opportunities with digital transformation



Meeting the challenges sharing the spoils



Convergence of people, processes and systems



Tackling risk. Taking the devil out of the details



Revolutionizing the factory floor



Increasing return on capital investment



Creating new business value



# Tasting note #5

Augmented reality at the plant floor level.

Augmented reality is making a significant difference at the plant floor level. With maintenance personnel spending up to 50% of their time searching for information, AR ensures that they have the right information when and where they need it. This could be in the form of a heads-up display of real-time production data and KPIs, maintenance data and, in case of a problem, visual guidance on where the fault is and how to rectify it.

The result? Reduced downtime and improved overall equipment effectiveness (OEE) for the machine. The same technology can guide operators through set-up and safety checks.



Bühler explores the potential of augmented reality thanks to Schneider Electric solutions

[Watch the video](#)

[Discover EcoStruxure Augmented Operator Advisor](#)

New challenges in food and beverage



Unlock new opportunities with digital transformation



Meeting the challenges sharing the spoils



Convergence of people, processes and systems



Tackling risk. Taking the devil out of the details



Revolutionizing the factory floor



Increasing return on capital investment



Creating new business value



# Equipment insights drive higher return on capital investment

New challenges in food and beverage



Unlock new opportunities with digital transformation



Meeting the challenges, sharing the spoils



Convergence of people, processes, and systems



Tackling risk. Taking the devil out of the details.



Revolutionizing the factory floor



Increasing return on capital investment



Creating new business value



# Equipment insights drive higher return on capital investment

Collecting and analyzing data generated by connected devices provides visibility of your plant's processes. With the right equipment management strategy and solutions, this data can be turned into actionable insights resulting in less downtime, optimized operating costs, mitigation of human errors, improved sustainability, and a higher return on capital investment (ROCI).

## Maximizing equipment uptime

As food and beverage manufacturing requires strict control of the costs to increase profitability, each unexpected stop of a production line has an impact on the throughput. Equipment management strategy improves asset reliability by utilizing reliability-centric and prescriptive approaches to efficiently use maintenance resources and maximize uptime.

## Improving operational efficiency

Enhanced equipment performance visibility gives plant staff improved operational insights to safely produce higher output levels, at optimized energy consumption levels. As an example, operational efficiency is improved down to the asset level, when enhanced digitization can analyze machine cycles down to the millisecond to identify any unwanted downtime and eliminate it. South African sugar producer RCL Foods has experienced these operational improvements when they implemented the EcoStruxure solution and **increased their plant's throughput by 20%**.



[Watch the RCL Foods case study](#)

Schneider Electric's investment in AVEVA gives you access to global, leading engineering and industrial software. See how we helped RCL Foods modernize an outdated DCS.

Aveva is a FTSE 100 company, 60% owned by Schneider Electric.

New challenges in food and beverage



Unlock new opportunities with digital transformation



Meeting the challenges sharing the spoils



Convergence of people, processes and systems



Tackling risk. Taking the devil out of the details



Revolutionizing the factory floor



Increasing return on capital investment



Creating new business value



# Equipment insights drive higher return on capital investment

## Empowering workforce

In addition to presenting maintenance teams with the right information at the right time, digital maintenance enforces data and format consistency. This significantly minimizes human error by helping to locate the equipment to be serviced and guiding operators step-by-step through the entire maintenance procedure.

## Optimizing energy usage

Thanks to digitization, Energy usage at the machine level is monitored and displayed so it can be better managed and optimized. With clear visibility of the devices' status and operating insights, the plant staff can keep them running at peak performance. Need proof? China's leading dairy producer, [Yili Group](#), was able to **cut energy costs by 5% while increasing operational efficiency by 19%** thanks to a complete energy management solution from Schneider Electric.



[Watch the Yili Group case study](#)

China's leading dairy producer becomes a model of energy savings and efficiency by digitizing their production with EcoStruxure Plant.

New challenges in food and beverage



Unlock new opportunities with digital transformation



Meeting the challenges sharing the spoils



Convergence of people, processes and systems



Tackling risk. Taking the devil out of the details



Revolutionizing the factory floor



Increasing return on capital investment



Creating new business value



# Tasting note #6

Plant equipment management strategy: doing more with less.

Both planned and unplanned downtime impacts productivity and final product cost. For instance, cleaning processes are strictly required for food safety regulations, even more with a higher changeover to deal with a bigger number of product variety. In these cleaning processes, efficient usage of energy, water, waste, and chemicals directly impacts the manufacturing performance. So, collecting data in real time to optimize the process becomes critical.

Data can work for you, but as the quantity and quality of plant equipment data continues to increase, and so does its value and contribution to the total cost of ownership, a robust plant equipment management strategy is becoming a must to improve performance.



We eat our own food: see EcoStruxure in action at Schneider Electric's own Chalon-sur-Saone factory

[Watch the video](#)

New challenges in food and beverage



Unlock new opportunities with digital transformation



Meeting the challenges sharing the spoils



Convergence of people, processes and systems



Tackling risk. Taking the devil out of the details



Revolutionizing the factory floor



Increasing return on capital investment



Creating new business value



# Tasting note #7

Data-driven performance for improved efficiency.

[EcoStruxure Asset Advisor](#), our suite of cybersecure, cloud-based digital, services, evaluates live information from your critical connected assets and applies advanced analytics to identify potential threats. So you can take action before they turn critical. The insights into your equipment performance let you mitigate safety risks and avoid unplanned downtime, operational losses, and expensive maintenance interventions.

With [EcoStruxure Equipment Efficiency Advisor](#), identifying production bottlenecks in real time, allows you to act instantly to remove them. This facilitates increased production and uptime, minimized waste, and lower production costs.



Get actionable and data-driven recommendations for your electrical and critical equipment to help ensure peak performance and personnel safety.

[Learn more](#)

New challenges in food and beverage



Unlock new opportunities with digital transformation



Meeting the challenges sharing the spoils



Convergence of people, processes and systems



Tackling risk. Taking the devil out of the details



Revolutionizing the factory floor



Increasing return on capital investment



Creating new business value

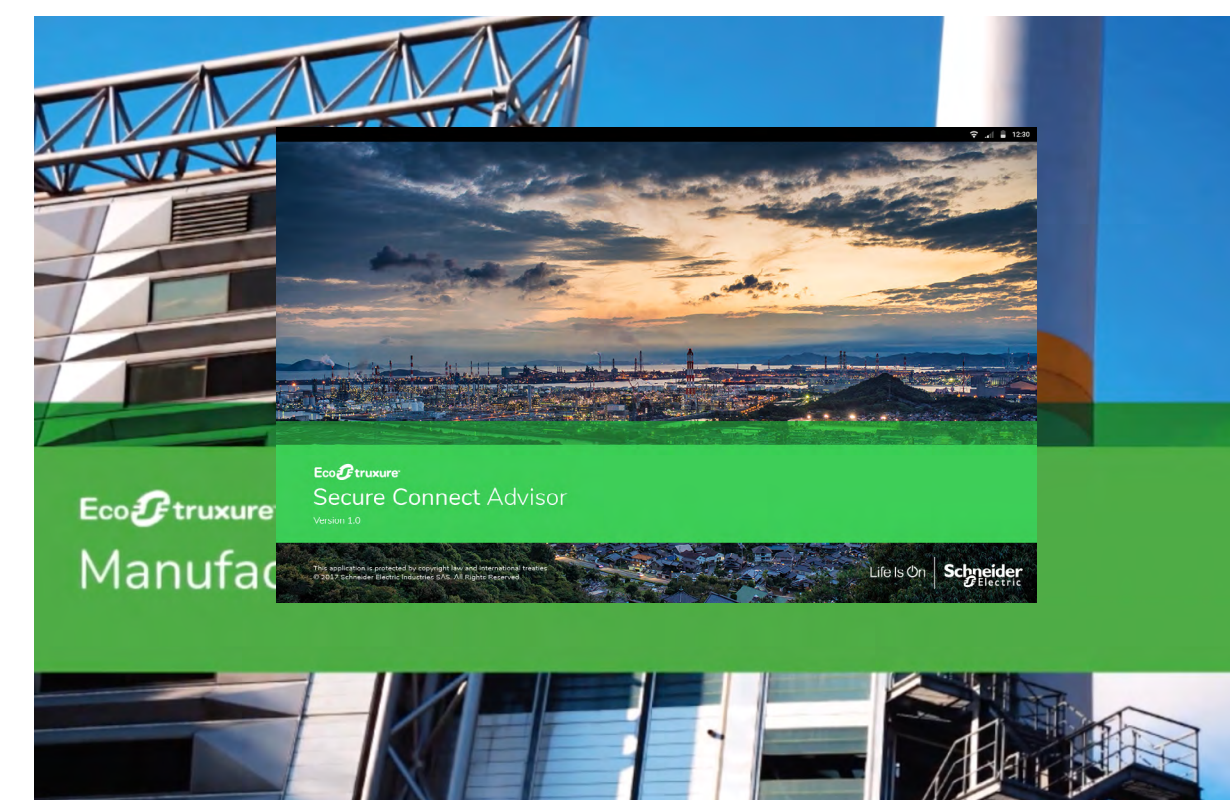


# Tasting note #8

Simple and smart asset monitoring connection for diagnostics and maintenance.

Upkeep is one of the biggest cost factors in every manufacturing plant. Sending out specialized personnel, often to remote areas, to fix, program, or even oversee equipment costs time and money. What if you could do it without moving from your desk? [EcoStruxure Secure Connect Advisor](#) allows to remotely access, program, and monitor HMIs, PLCs, or other connected devices from their computers or smart devices.

The tool also enables remote troubleshooting and changing manufacturing parameters, just as you would be on the factory floor. The connection is cybersecure (end-to-end) for both OEMs and end users. In some cases, this has shortened troubleshooting time from over seven days to as little as four hours.



Your secure remote access solution

[Learn more](#)

New challenges in food and beverage



Unlock new opportunities with digital transformation



Meeting the challenges sharing the spoils



Convergence of people, processes and systems



Tackling risk. Taking the devil out of the details



Revolutionizing the factory floor



Increasing return on capital investment



Creating new business value



# Create new business value with Schneider Electric

New challenges  
in food and  
beverage



Unlock new  
opportunities  
with digital  
transformation



Meeting the  
challenges, sharing  
the spoils



Convergence of  
people, processes,  
and systems



Tackling risk.  
Taking the devil  
out of the details.



Revolutionizing  
the factory floor



Increasing  
return on capital  
investment



Creating new  
business value



# Create new business value with Schneider Electric

The IIoT isn't about ripping out current automation systems and replacing them with new ones. The opportunities exist where current systems are linked with enterprise planning, scheduling, and product life-cycle systems.

By connecting the whole supply chain from customers to suppliers, by becoming more flexible and demand-driven, you can create new business models and revenue streams, increasing adaptability and driving efficiency. IIoT-enabled machines are allowing the machine builders to offer product capability as a service as opposed to selling the machine.

EcoStruxure for Food & Beverage provides the connectivity you need. It helps you maximize energy efficiency and sustainability through smarter systems and real-time, data-driven decisions. At the same time, it optimizes asset availability and performance through predictive analytics and proactive maintenance. The result? **Smart, productive, and profitable operations experiencing less waste and less downtime.**

In an extremely fast-moving environment, Schneider Electric has the expertise and the technologies to help food and beverage producers achieve convergence and derive the exponential benefits of digital transformation.



Discover EcoStruxure for Food & Beverage

[Find out more](#)

New challenges in food and beverage



Unlock new opportunities with digital transformation



Meeting the challenges sharing the spoils



Convergence of people, processes and systems



Tackling risk. Taking the devil out of the details



Revolutionizing the factory floor



Increasing return on capital investment



Creating new business value



Life Is On



What digital transformation brings to the table  
for the Food & Beverage industry

[se.com/food-and-beverage](https://se.com/food-and-beverage)

**Schneider Electric**

35 rue Joseph Monier

92500 Rueil-Malmaison, France

Tel : +33 (0)1 41 29 70 00

© 2020 Schneider Electric. All Rights Reserved. Life Is On | Schneider Electric and EcoStruxure are trademarks and the property of Schneider Electric SE, its subsidiaries and affiliated companies.  
998-20780036

